



Genisys Touch (561301)

Quick Start Guide



1. Network connection

2. VCI connection

3. Vehicle selected

4. Controller selected

5. Settings

6. Help

7. Power

Press to turn tool on or enter/exit standby mode.

Press and hold to force shutdown (not recommended).

8. Function

Press to access volume and brightness control.

9. Ethernet port

10. External monitor port

11. USB ports

12. SD card slot

13. Audio port

14. AC power port

Safety Precautions

SAVE THESE INSTRUCTIONS. This guide contains important safety and operating instructions.

Read and understand all instructions before operating the tool.



When an engine is operating, keep the service area WELL VENTILATED or attach a building exhaust removal system to the engine exhaust system. Engines produce carbon monoxide, an odorless, poisonous gas that causes slower reaction time and can lead to serious personal injury or loss of life.



- **When working with hydraulic or fuel lines, be careful that liquids under pressure do not escape and create a dangerous condition. Use adequate ventilation and make sure there are no sparks or possibility of sparks present that may ignite any vapor.**
- **Wear an American National Standards Institute (ANSI) approved eye shield when testing or repairing vehicles.**
- **Objects propelled by whirling engine components or pressurized liquids escaping may cause personal injury.**
- **Set the parking brake and block the wheels before testing or repairing a vehicle. It is especially important to block the wheels on front-wheel drive vehicles because the parking brake does not hold the drive wheels.**
- **Use only specifically designed replacement parts (brake hoses and lines) for ABS-equipped vehicles.**
- **Do not drive the vehicle and operate the software at the same time. Any distractions may cause an accident. Have one person operate the software as another person drives the vehicle.**
- **Maintain adequate clearance around moving components or belts during testing. Moving components and belts can catch loose clothing, body parts, or test equipment and cause serious damage or personal injury.**
- **Automotive batteries contain sulfuric acid and produce explosive gases that can result in serious injury. To prevent ignition of gases, keep lit cigarettes, sparks, flames, and other ignition sources away from the battery at all times.**
- **Refer to the service manual for the vehicle being serviced. Adhere to all diagnostic procedures and precautions. Failure to do so could result in personal injury or otherwise unneeded repairs.**
- **After bleeding the brake system, check the brake pedal for excessive travel or a "spongy" feel. Bleed again if either condition is present.**
- **This equipment has been tested and found to comply with the limits for a Class B digital device, pursuant to Part 15 of the FCC Rules. These limits are designed to provide reasonable protection against harmful interference in a residential installation. This equipment generates and radiates radio frequency energy and, if not installed and used in accordance with the instructions, may cause harmful interference to radio communications.**

- **When installing transmitting devices (Citizen Band radio, telephone, etc.) on ABS-equipped vehicles, do not locate the antenna near the ABS control unit or any other control unit.**
- **To reduce risk of injury, charge only US Service Solutions, LLC-supplied rechargeable batteries for the Genisys Touch product with the supplied charger. Other types of batteries may burst, causing injury to persons and damage.**
- **Use of an attachment not recommended or sold by the battery charger manufacturer may result in fire, electric shock, or personal injury.**
- **Do not operate the tool with a damaged cord or connector. Replace damaged cords and connectors immediately.**
- **Do not operate the charger if it has received a sharp blow, been dropped, or otherwise damaged in any way. Take the charger to a qualified service person.**
- **Do not disassemble the charger. Take the charger to a qualified service person if service or repair is necessary. Incorrect reassembly may result in electric shock or fire. Unplug charger before attempting any maintenance or cleaning. Turning off controls will not reduce this risk.**
- **To prevent possible hearing damage, avoid using the tool at high volume levels for long periods.**



- **Do not expose tool or charger to rain, moisture, or snow.**
- **Verify that cords are located so as not to be stepped on, tripped over, or otherwise become a safety hazard or subjected to damage or stress.**

IMPORTANT:

- Operate the device only at temperatures of 0–40°C (32–104°F).
- To avoid damage or generation of false data, make sure the vehicle battery is fully charged and the connection to the vehicle Diagnostic Link Connection is clean and secure.
- Do not place the tool on or near the ignition system of a vehicle. Strong electromagnetic interference can damage the tool.
- Never disconnect or reconnect any electrical connector while the ignition is on. Powertrain Control Module damage may result.

Radiation Exposure Statement:

This product complies with the FCC portable RF exposure limit set forth for an uncontrolled environment and is safe for intended operation as described in this manual. Further RF exposure reduction can be achieved by keeping the product as far as possible from the user's body or by setting the device to lower output power if such function is available.

1. Install the battery in the handset and tighten the two (2) screws.



2. Connect the handset to AC power and fully charge the battery.

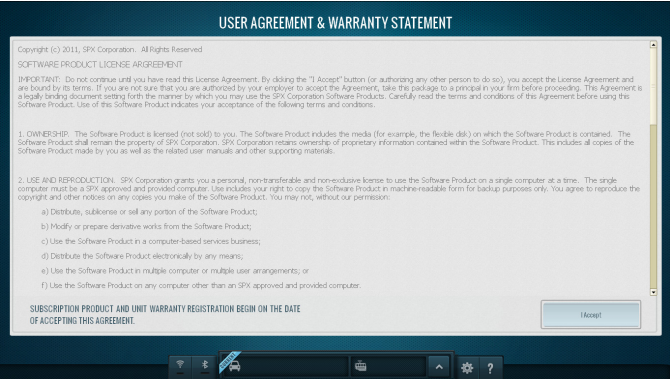


Note: The tool can be used while charging.

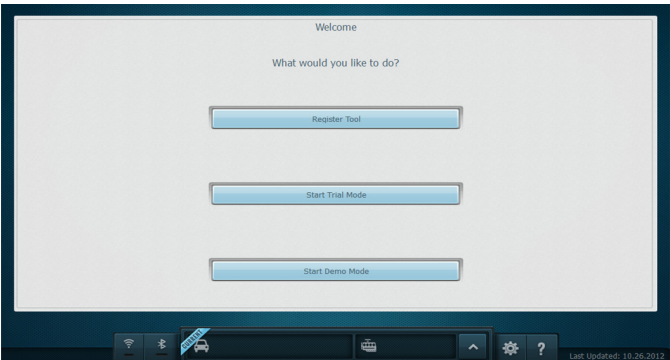
3. Press the power button to turn on the handset.



4. Read and accept the user agreement and warranty.



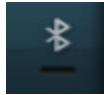
5. Register the tool, begin the trial period, or run the tool in demo mode.



6. Connect the VCI to the vehicle.



7. Connect the handset to the VCI.



To connect by Bluetooth, touch the Bluetooth icon and select the VCI.

Note: Bluetooth connectivity may be improved by placing the VCI on the dashboard.



To connect by USB, use the cord provided.

8. Connect to the internet.



To connect wirelessly, touch the wireless icon and select the network.

Note: The tool can be connected by Ethernet where wireless is not available.

Europe – EU Declaration of Conformity

This device complies with the essential requirements of the R&TTE Directive 1999/5/EC. The following test methods have been applied in order to prove presumption of conformity with the essential requirements of the R&TTE Directive 1999/5/EC:

EN 300 328 V1.7.1: 2006

Electromagnetic compatibility and Radio spectrum Matters (ERM); Wideband Transmission systems; Data transmission equipment operating in the 2,4 GHz ISM band and using spread spectrum modulation techniques.

EN 62311: 2008

Assessment of electronic and electrical equipment related to human exposure restrictions for electromagnetic fields (0 Hz – 300 GHz)

EN 60950-1: 2006+A11 :2009+ A1:2010+ A12:2011

Safety of Information Technology Equipment

EN 301 489-1 V1.9.2 (2011-09)

Electromagnetic compatibility and Radio Spectrum Matters (ERM); ElectroMagnetic Compatibility (EMC) standard for radio equipment and services; Part 1: Common technical requirements

EN 301 489-17 V2.1.1 (2009-05)

Electromagnetic compatibility and Radio spectrum Matters (ERM); ElectroMagnetic Compatibility (EMC) standard for radio equipment; Part 17: Specific conditions for Broadband Data Transmission Systems

CE 0081 !

Hereby, US Service Solutions, LLC, declares that this scan tool is in compliance with the essential requirements and other relevant provisions of Directive 1999/5/EC.

Por medio de la presente US Service Solutions, LLC declara que el instrumento de escaneo cumple con los requisitos esenciales y cualesquiera otras disposiciones aplicables o exigibles de la Directiva 1999/5/CE.

Par la présente US Service Solutions, LLC déclare que l'appareil outil d'analyse des est conforme aux exigences essentielles et aux autres dispositions pertinentes de la directive 1999/5/CE.

OTC Technical Services: (800) 533-6127

Please record and retain this important information:

Part No: _____

Serial No: _____

Purchase Date: _____