



ASUS Transformer Book

E-Manual



COPYRIGHT INFORMATION

No part of this manual, including the products and software described in it, may be reproduced, transmitted, transcribed, stored in a retrieval system, or translated into any language in any form or by any means, except documentation kept by the purchaser for backup purposes, without the express written permission of ASUSTeK COMPUTER INC. ("ASUS").

ASUS PROVIDES THIS MANUAL "AS IS" WITHOUT WARRANTY OF ANY KIND, EITHER EXPRESS OR IMPLIED, INCLUDING BUT NOT LIMITED TO THE IMPLIED WARRANTIES OR CONDITIONS OF MERCHANTABILITY OR FITNESS FOR A PARTICULAR PURPOSE. IN NO EVENT SHALL ASUS, ITS DIRECTORS, OFFICERS, EMPLOYEES OR AGENTS BE LIABLE FOR ANY INDIRECT, SPECIAL, INCIDENTAL, OR CONSEQUENTIAL DAMAGES (INCLUDING DAMAGES FOR LOSS OF PROFITS, LOSS OF BUSINESS, LOSS OF USE OR DATA, INTERRUPTION OF BUSINESS AND THE LIKE), EVEN IF ASUS HAS BEEN ADVISED OF THE POSSIBILITY OF SUCH DAMAGES ARISING FROM ANY DEFECT OR ERROR IN THIS MANUAL OR PRODUCT.

Products and corporate names appearing in this manual may or may not be registered trademarks or copyrights of their respective companies, and are used only for identification or explanation and to the owners' benefit, without intent to infringe.

SPECIFICATIONS AND INFORMATION CONTAINED IN THIS MANUAL ARE FURNISHED FOR INFORMATIONAL USE ONLY, AND ARE SUBJECT TO CHANGE AT ANY TIME WITHOUT NOTICE, AND SHOULD NOT BE CONSTRUED AS A COMMITMENT BY ASUS. ASUS ASSUMES NO RESPONSIBILITY OR LIABILITY FOR ANY ERRORS OR INACCURACIES THAT MAY APPEAR IN THIS MANUAL, INCLUDING THE PRODUCTS AND SOFTWARE DESCRIBED IN IT.

Copyright © 2012 ASUSTeK COMPUTER INC. All Rights Reserved.

LIMITATION OF LIABILITY

Circumstances may arise where because of a default on ASUS' part or other liability, you are entitled to recover damages from ASUS. In each such instance, regardless of the basis on which you are entitled to claim damages from ASUS, ASUS is liable for no more than damages for bodily injury (including death) and damage to real property and tangible personal property; or any other actual and direct damages resulted from omission or failure of performing legal duties under this Warranty Statement, up to the listed contract price of each product.

ASUS will only be responsible for or indemnify you for loss, damages or claims based in contract, tort or infringement under this Warranty Statement.

This limit also applies to ASUS' suppliers and its reseller. It is the maximum for which ASUS, its suppliers, and your reseller are collectively responsible.

UNDER NO CIRCUMSTANCES IS ASUS LIABLE FOR ANY OF THE FOLLOWING: (1) THIRD-PARTY CLAIMS AGAINST YOU FOR DAMAGES; (2) LOSS OF, OR DAMAGE TO, YOUR RECORDS OR DATA; OR (3) SPECIAL, INCIDENTAL, OR INDIRECT DAMAGES OR FOR ANY ECONOMIC CONSEQUENTIAL DAMAGES (INCLUDING LOST PROFITS OR SAVINGS), EVEN IF ASUS, ITS SUPPLIERS OR YOUR RESELLER IS INFORMED OF THEIR POSSIBILITY.

SERVICE AND SUPPORT

Visit our multi-language web site at <http://support.asus.com>

Table of Contents

About this manual	6
Conventions used in this manual	7
Icons	7
Typography.....	7
Safety precautions	8
Using your ASUS Transformer Book.....	8
Caring for your ASUS Transformer Book.....	9
Proper disposal.....	10

Chapter 1: Hardware Setup

Getting to know your ASUS Transformer Book	12
Display panel features	15
Right Side	17
Left Side	18

Chapter 2: Using your ASUS Transformer Book

Getting started.....	22
Charge your ASUS Transformer Book.....	22
Lift to open the display panel.	23
Press the power button.....	23
Undocking or docking the display panel.....	24
Gestures for the touch screen and touchpad	25
Using the touch screen.....	25
Using the touchpad	27
Using the keyboard	33
Function keys	33
Function keys for ASUS Apps	34
Windows® 8 keys.....	34

Chapter 3: Working with Windows® 8

Starting for the first time	36
Windows® 8 lock screen.....	36
Windows® UI.....	37
Start screen	37
Windows® App.....	37
Hotspots.....	38

Working with Windows® apps.....	40
Launching apps.....	40
Customizing apps.....	40
Closing apps.....	42
Accessing the Apps screen.....	43
Charm bar.....	45
Snap feature	47
Other keyboard shortcuts.....	49
Connecting to wireless networks.....	51
Wi-Fi	51
Bluetooth	53
Airplane mode.....	55
Connecting to wired networks.....	56
Configuring a dynamic IP/PPPoE network connection	56
Configuring a static IP network connection	60
Turning your ASUS Transformer Book off.....	61
Putting your ASUS Transformer Book on Sleep mode	61

Chapter 4: ASUS apps

Featured ASUS Apps	64
LifeFrame	64
Power4Gear Hybrid.....	66
Instant On.....	67

Chapter 5: Power-on Self Test (POST)

The Power-on Self Test (POST)	70
Using POST to access BIOS and Troubleshoot	70
BIOS	70
Accessing BIOS	70
BIOS Settings.....	71
Troubleshoot.....	79
Refresh your PC	79
Reset your PC	80
Advanced options	81

Appendices

DVD-ROM Drive Information (on selected models).....	84
Blu-ray ROM Drive Information (on selected models)	86
Internal Modem Compliancy	87
Overview.....	87
Network Compatibility Declaration	87
Network Compatibility Declaration	88
Non-Voice Equipment	88
Federal Communications Commission Statement.....	90
RF Exposure Information (SAR).....	92
FCC Radio Frequency (RF) Exposure Caution Statement	93
Declaration of Conformity (R&TTE directive 1999/5/EC).....	93
CE Marking.....	94
IC Radiation Exposure Statement for Canada	94
Déclaration d'Industrie Canada relative à l'exposition aux ondes radio	95
Wireless Operation Channel for Different Domains.....	96
France Restricted Wireless Frequency Bands	96
UL Safety Notices.....	98
Power Safety Requirement.....	99
TV Tuner Notices	99
REACH	99
Nordic Lithium Cautions (for lithium-ion batteries).....	99
Optical Drive Safety Information	101
CTR 21 Approval (for ASUS Transformer Book with built-in Modem)	102
ENERGY STAR complied product	103
European Union Eco-label.....	104
Prevention of Hearing Loss	104
Global Environmental Regulation Compliance and Declaration	105
ASUS Recycling/Takeback Services.....	105
Coating Notice.....	105
Regional notice for Singapore	105

About this manual

This manual provides information about the hardware and software features of your ASUS Transformer Book, organized through the following chapters:

Chapter 1: Hardware Setup

This chapter details the hardware components of your ASUS Transformer Book.

Chapter 2: Using your ASUS Transformer Book

This chapter shows you how to use the different parts of your ASUS Transformer Book.

Chapter 3: Working with Windows® 8

This chapter provides an overview of using Windows® 8 in your ASUS Transformer Book.

Chapter 4: ASUS Apps

This chapter features the ASUS apps included with your ASUS Transformer Book.

Chapter 5: Power-on Self-test (POST)

This chapter shows you how to use POST to change the settings of your ASUS Transformer Book.

Appendices

This section includes notices and safety statements for your ASUS Transformer Book.

Conventions used in this manual

To highlight key information in this manual, some text are presented as follows:

IMPORTANT! This message contains vital information that must be followed to complete a task.

NOTE: This message contains additional information and tips that can help complete tasks.

WARNING! This message contains important information that must be followed to keep you safe while performing tasks and prevent damage to your ASUS Transformer Book's data and components.

Icons

The icons below indicate the devices you can use for completing a series of tasks or procedures on your ASUS Transformer Book.



= Use the touch screen display panel.



= Use the touchpad.



= Use the keyboard.

Typography

Bold = This indicates a menu or an item that must be selected.

Italic = This indicates sections that you can refer to in this manual.

Safety precautions

Using your ASUS Transformer Book



This ASUS Transformer Book should only be used in environments with ambient temperatures between 5°C (41°F) and 35°C (95°F).



Refer to the rating label on the bottom of your ASUS Transformer Book and ensure that your power adapter complies with this rating.



Do not leave your ASUS Transformer Book on your lap or near any part of your body to prevent discomfort or injury from heat exposure.



Do not use damaged power cords, accessories, and other peripherals with your ASUS Transformer Book.



While powered on, ensure that you do not carry or cover your ASUS Transformer Book with any materials that can reduce air circulation.



Do not place your ASUS Transformer Book on uneven or unstable work surfaces.



You can send your ASUS Transformer Book through x-ray machines (used on items placed on conveyor belts), but do not expose them to magnetic detectors and wands.



Contact your airline provider to learn about related inflight services that can be used and restrictions that must be followed when using your ASUS Transformer Book in-flight.

Caring for your ASUS Transformer Book



Disconnect the AC power and remove the battery pack (if applicable) before cleaning your ASUS Transformer Book. Use a clean cellulose sponge or chamois cloth dampened with a solution of nonabrasive detergent and a few drops of warm water. Remove any extra moisture from your ASUS Transformer Book using a dry cloth.



Do not use strong solvents such as thinners, benzene, or other chemicals on or near your ASUS Transformer Book.



Do not place objects on top of your ASUS Transformer Book.



Do not expose your ASUS Transformer Book to strong magnetic or electrical fields.



Do not use or expose your ASUS Transformer Book near liquids, rain, or moisture.



Do not expose your ASUS Transformer Book to dusty environments.



Do not use your ASUS Transformer Book near gas leaks.

Proper disposal



Do not throw your ASUS Transformer Book in municipal waste. This product has been designed to enable proper reuse of parts and recycling. The symbol of the crossed out wheeled bin indicates that the product (electrical, electronic equipment and mercury-containing button cell battery) should not be placed in municipal waste. Check local regulations for disposal of electronic products.



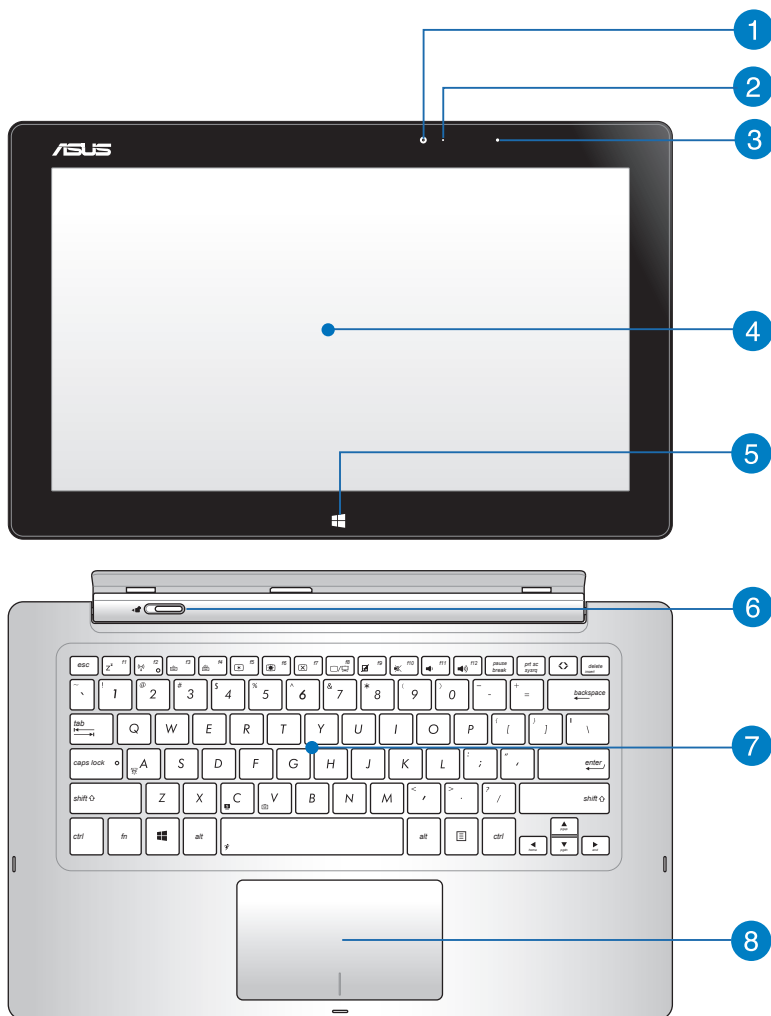
Do not throw the battery in municipal waste. The symbol of the crossed out wheeled bin indicates that the battery should not be placed in municipal waste.

Chapter 1:

Hardware Setup

Getting to know your ASUS Transformer Book

NOTE: The keyboard's layout may vary per region or country. The Notebook view may also vary in appearance depending on the ASUS Transformer Book model.



1 Camera

The built-in camera allows you to take pictures or record videos using your ASUS Transformer Book.

2 Camera indicator

The camera indicator lights up when the built-in camera is in use.

3 Ambient light sensor

This ambient light sensor detects the amount of ambient light in your environment. It allows the system to automatically adjust the brightness of the display depending on the ambient light condition.

4 Display panel

This display panel provides excellent viewing features for photos, videos, and other multimedia files on your ASUS Transformer Book.

NOTE: The ASUS Transformer Book is also equipped with a touch-enabled panel, allowing you to operate it using touch screen gestures. For more details, refer to the *Gestures for the touch screen and touchpad* section in this manual.

5 Windows® 8 touch button

Touch this button to go back to the Start screen. If you are already in the Start screen, touch this button to go back to the last app you opened.

6 Dock latch

Move the latch to the left and hold it to detach the display panel from the dock.

7 Keyboard

The keyboard provides full-sized QWERTY keys with a comfortable travel depth for typing. It also enables you to use the function keys, allows quick access to Windows®, and controls other multimedia functions.

NOTE:

- The keyboard layout differs by model or territory.
 - Some selected models come with a backlit keyboard.
-

8 Touchpad

The touchpad allows the use of multi-gestures to navigate onscreen, providing an intuitive user experience. It also simulates the functions of a regular mouse.

NOTE: For more details, refer to the *Gestures for the touchpad* section in this manual.

Display panel features

The ASUS Transformer Book comes with a detachable touch screen display panel that works like a Tablet PC to suit your mobile needs. The display panel is also equipped with its own features for work and play.

NOTE: For more details on detaching or reattaching the display panel, refer to the *Undocking or docking the display panel* section in this manual.

Top view



1 Power button

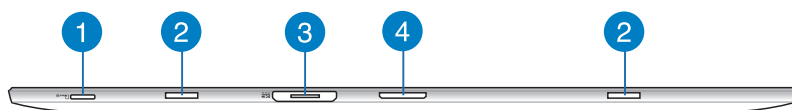
Press the power button to turn your ASUS Transformer Book on or off. You can also use the power button to put your ASUS Transformer Book to sleep or hibernate mode and wake it up from sleep or hibernate mode.

In the event that your ASUS Transformer Book becomes unresponsive, press and hold the power button for about four (4) seconds until your ASUS Transformer Book shuts down.

2 Microphone

The built-in microphone can be used for video conferencing, voice narrations, or simple audio recording.

Bottom view



1 MicroSD card slot

The display panel comes with an additional built-in memory card reader slot that supports microSD and microSDHC card formats.

2 Hinge holes

Align and insert the latch hooks into these holes to securely attach the display panel to the dock.

3 Magnetic power connector

When the display panel is detached from the dock, connect the bundled power adapter into this connector to charge the battery pack and supply power to the display panel.

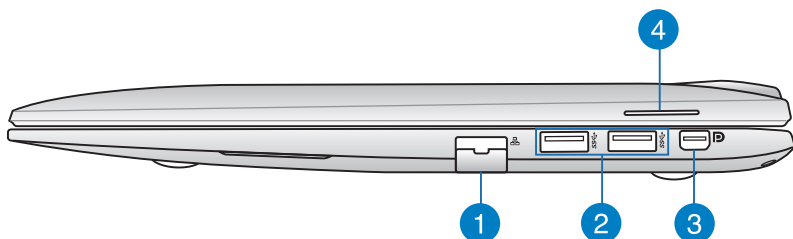
WARNING! The adapter may become warm to hot while in use. Ensure not to cover the adapter and keep it away from your body while it is connected to a power source.

IMPORTANT! Use only the bundled power adapter to charge the battery pack and supply power to your ASUS Transformer Book.

4 Dock connector

The dock connector connects the display panel to the dock. When connected, you can enjoy a standard QWERTY keyboard and a host of featured ports including two USB 3.0 ports, an SD/SDHC memory card reader, an RJ-45 LAN port, and a mini DisplayPort for a digital audio/video interface.

Right Side



1 LAN port

Insert the network cable into this port to connect to a local area network (LAN).

2 USB 3.0 ports

These Universal Serial Bus 3.0 (USB 3.0) ports provide a transfer rate of up to 5 Gbit/s and are backward compatible to USB 2.0.

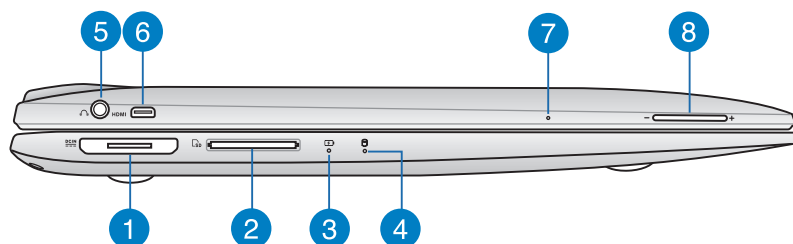
3 Mini DisplayPort

Use this port to connect your ASUS Transformer Book to a DisplayPort, VGA, DVI, or HDMI external display.

4 Audio speaker

The built-in audio speaker allows you to hear audio straight from the ASUS Transformer Book. The audio features of this ASUS Transformer Book are software-controlled.

Left Side



1 Magnetic power connector

This power connector allows you to magnetically attach the power connector of your AC adapter to your ASUS Transformer Book. Connect the bundled power adapter into this connector to charge the battery pack and supply power to your ASUS Transformer Book.

WARNING! The adapter may become warm to hot while in use. Ensure not to cover the adapter and keep it away from your body while it is connected to a power source.

IMPORTANT! Use only the bundled power adapter to charge the battery pack and supply power to your ASUS Transformer Book.

2 Memory card reader

This ASUS Transformer Book has a single built-in memory card reader slot that supports SD and SDHC card formats.

3 Two-color battery charge indicator

The two-color LED provides a visual indication of the battery's charge status. Refer to the following table for details:

Color	Status
Solid Green	The ASUS Transformer Book is plugged to a power source and the battery power is between 95% and 100%.
Solid Orange	The ASUS Transformer Book is running on battery mode and the battery power is less than 95%.
Blinking Orange	The ASUS Transformer Book is running on battery mode and the battery power is less than 10%.
Lights off	The ASUS Transformer Book is running on battery mode and the battery power is between 10% to 100%.

4 Drive activity indicator

This indicator lights up when your ASUS Transformer Book is accessing the internal storage drives.

5 Headphone output/microphone input combo jack port

This port allows you to connect your ASUS Transformer Book to amplified speakers or headphones. You can also use this port to connect your ASUS Transformer Book to an external microphone.

6 Micro HDMI port

This port is for a micro High-Definition Multimedia Interface (HDMI) connector and is HDCP compliant for HD DVD, Blu-ray and other protected content playback.

7 Manual reset hole

If the system becomes unresponsive, insert a straightened paper clip into the hole to force-restart your ASUS Transformer Book.

WARNING! Forcing the system to restart may result to data loss. We strongly recommend that you back up your data regularly.

8 Volume button

Press this button to increase or decrease the volume.

Chapter 2:

Using your ASUS Transformer Book

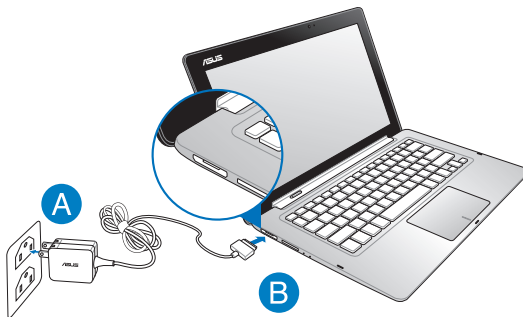
Getting started

Charge your ASUS Transformer Book.

- A. Plug the AC power adapter into a 100V~240V power source.
- B. Connect the DC power connector into your ASUS Transformer Book's power (DC) input.



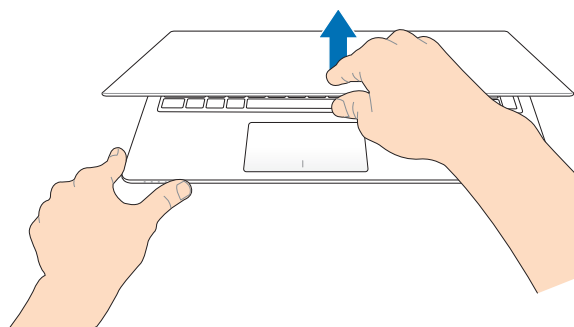
Charge the ASUS Transformer Book for **3 hours** before using it in battery mode for the first time.



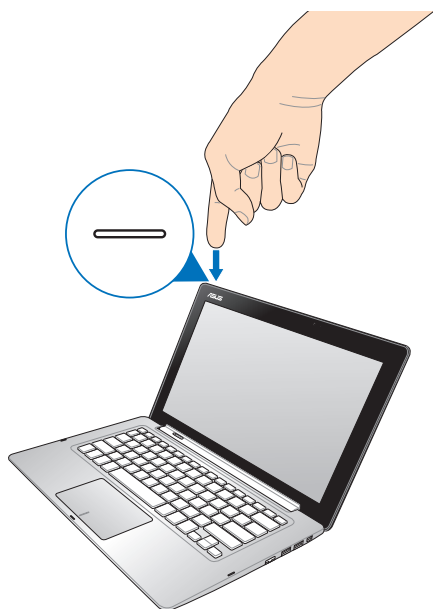
IMPORTANT!

- Ensure that your ASUS Transformer Book is connected to the power adapter before turning it on for the first time.
- Ensure that your AC power adapter is plugged-in to a grounded power outlet when using with your ASUS Transformer Book.
- When using your ASUS Transformer Book on power adapter mode, the socket outlet must be near to the unit and easily accessible.
- Locate the input/output rating label on your ASUS Transformer Book and ensure that it matches the input/output rating information on your power adapter. Some ASUS Transformer Book models may have multiple rating output currents based on the available SKU. Refer below for the ASUS Transformer Book power adapter information:
 - Input voltage: 100-240Vac
 - Input frequency: 50-60Hz
 - Rating output current: 3.42A (65W)
 - Rating output voltage: 19V

Lift to open the display panel.

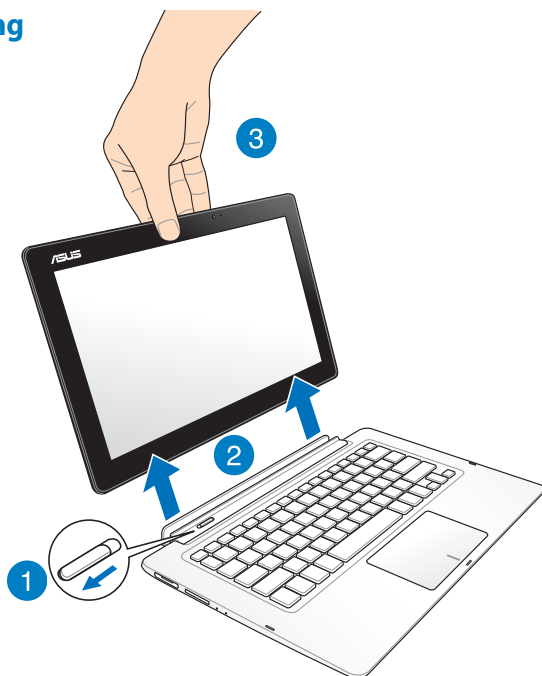


Press the power button.

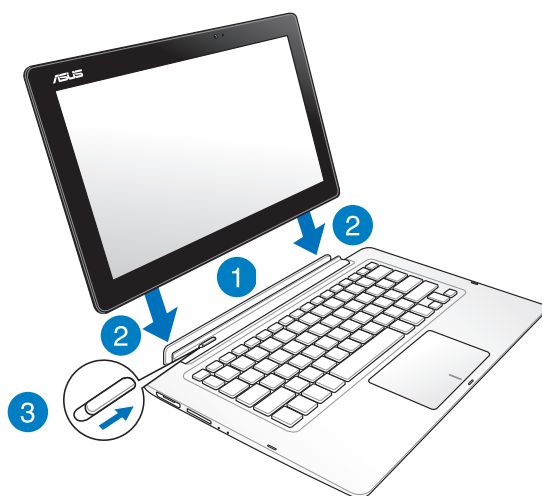


Undocking or docking the display panel.

Undocking



Docking



Gestures for the touch screen and touchpad

Gestures allow you to launch programs and access the settings of your ASUS Transformer Book. Refer to the following illustrations when using hand gestures on your touch screen and touchpad.

Using the touch screen

Left edge swipe



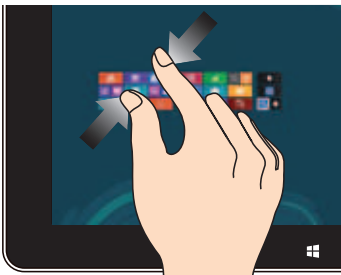
Swipe from the left edge of the screen to shuffle your running apps.

Right edge swipe



Swipe from the right edge of the screen to launch the **Charm bar**.

Zoom out



Bring together your two fingers on the touch panel.

Zoom in



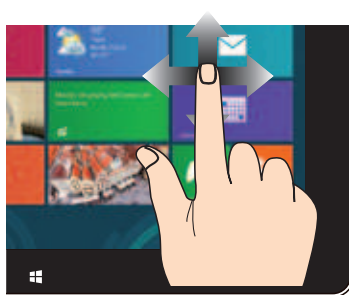
Spread apart your two fingers on the touch panel.

Top edge swipe



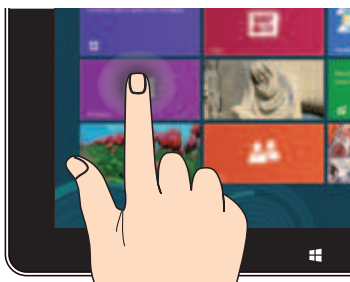
- In the Start screen, swipe from the top edge of the screen to view the **All Apps** bar.
- In a running app, swipe from the top edge of the screen to view its menu.

Finger slide



Slide your finger to scroll up and down and slide your finger to pan the screen left or right.

Tap and hold



- To move an app, tap and hold the app tile and drag it to a new location.
- To close an app, tap and hold the top side of the running app and drag it down to the bottom of the screen to close it.

Tap/Double tap



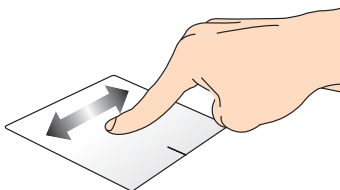
- Tap an app to launch it.
- On Desktop mode, double-tap an application to launch it.

Using the touchpad

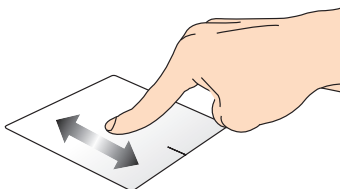
Moving the pointer

You can tap or click anywhere on the touchpad to activate its pointer, then slide your finger on the touchpad to move the pointer onscreen.

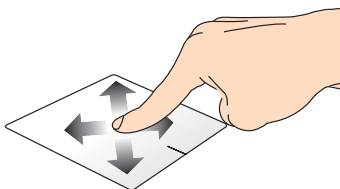
Slide horizontally



Slide vertically

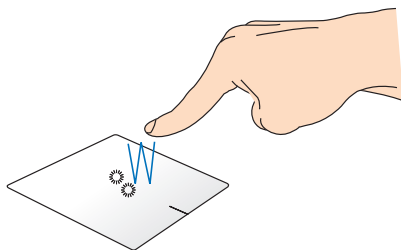


Slide diagonally



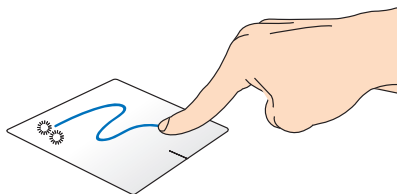
One-finger gestures

Tap/Double tap



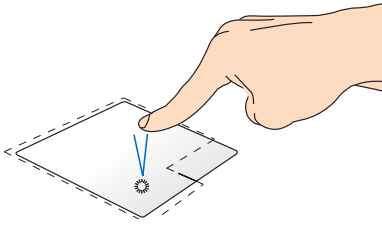
- In the Start screen, tap an app to launch it.
- In Desktop mode, double-tap an application to launch it.

Drag and drop



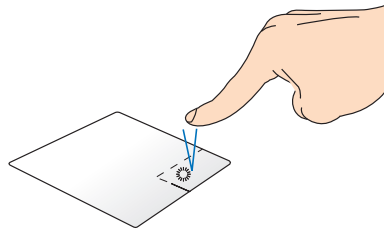
Double-tap an item, then slide the same finger without lifting it off the touchpad. To drop the item to its new location, lift your finger from the touchpad.

Left-click



- In the Start screen, click an app to launch it.
- In Desktop mode, double-click an application to launch it.

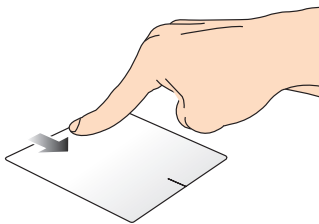
Right-click



- In the Start screen, click an app to select it and launch the settings bar. You can also press this button to launch the **All Apps** bar.
- In Desktop mode, use this button to open the right-click menu.

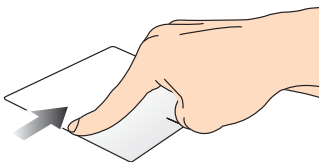
NOTE: The areas inside the dotted line represent the locations of the left mouse button and the right mouse button on the touchpad.

Top edge swipe



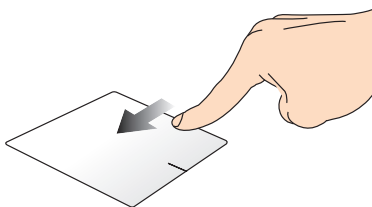
- In the Start screen, swipe from the top edge to launch the **All Apps** bar.
- In a running app, swipe from the top edge to view its menu.

Left edge swipe



Swipe from the left edge to shuffle your running apps.

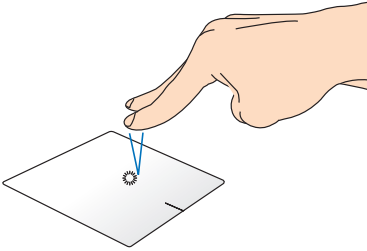
Right edge swipe



Swipe the right edge to launch the **Charm bar**.

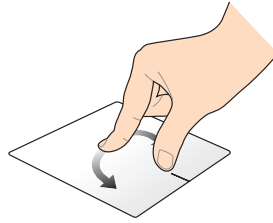
Two-finger gestures

Tap



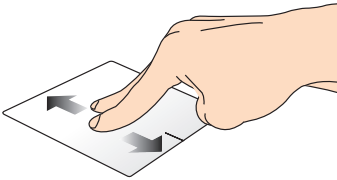
Tap two fingers on the touchpad to simulate the right-click function.

Rotate



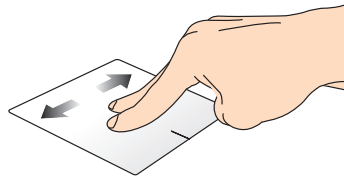
To rotate an image, place two fingers on the touchpad then turn one finger clockwise or counterclockwise while the other stays still.

Two-finger scroll (up/down)



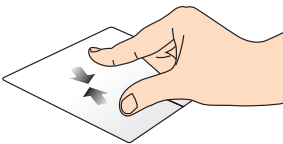
Slide two fingers to scroll up or down.

Two-finger scroll (left/right)



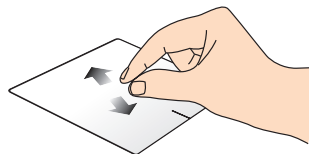
Slide two fingers to scroll left or right.

Zoom out



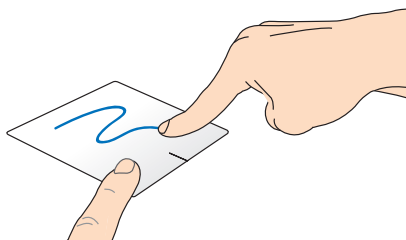
Bring together your two fingers on the touchpad.

Zoom in



Spread apart your two fingers on the touchpad.

Drag and drop



Select an item then press and hold the left button. Using your other finger, slide down the touchpad to drag and drop the item to a new location.

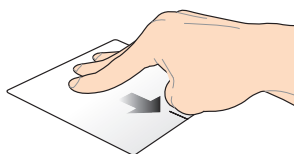
Three-finger gestures

Swipe up



Swipe three fingers upward to show all running applications.

Swipe down

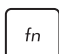


Swipe three fingers downward to show the Desktop mode.

Using the keyboard



Function keys



The function keys on your ASUS Transformer Book's keyboard can trigger the following commands:

 +  Puts the ASUS Transformer Book into **Sleep mode**

 +  Turns **Airplane mode** on or off

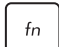

NOTE: When enabled, the **Airplane mode** disables all wireless connectivity.

 +  **(on selected models)** Decreases keyboard brightness for ASUS Transformer Book models with a backlit keyboard

 +  **(on selected models)** Increases keyboard brightness for ASUS Transformer Book models with a backlit keyboard



 +  Decreases display brightness

 +  Increases display brightness

 +  Turns the display panel off

 +  Activates the second screen

NOTE: Ensure that the second display is connected to your ASUS Transformer Book.

 +  Enables or disables the touchpad



Turns the speaker on or off



Turns the speaker volume down



Turns the speaker volume up



(on selected models) Toggles the ambient light sensor on or off

Function keys for ASUS Apps

Your ASUS Transformer Book also comes with a special set of function keys that can be used to launch ASUS apps.



Toggles the **ASUS Splendid Video Enhancement Technology** app to switch between these display color enhancement modes: Gamma Correction, Vivid Mode, Theater Mode, Soft Mode, My Profile, and Normal.



Launches the **ASUS LifeFrame** app



Launches the **ASUS Power4Gear Hybrid** app

Windows® 8 keys

There are two special Windows® keys on your ASUS Transformer Book's keyboard used as below:



Press this key to go back to the Start screen. If you are already in the Start screen, press this key to go back to the last app you opened.



Press this key to simulate the right-click functions.

Chapter 3:

Working with Windows® 8

Starting for the first time

When you start your computer for the first time, a series of screens appear to guide you in configuring the basic settings of your Windows® 8 operating system.

To start your ASUS Transformer Book for the first time:

1. Press the power button on your ASUS Transformer Book. Wait for a few minutes until the setup screen appears.
2. From the setup screen, pick a language to use on your ASUS Transformer Book.
3. Carefully read the License Terms. Tick **I accept the terms for using Windows** then click **Accept**.
4. Follow the onscreen instructions to configure the following basic items:
 - Keep your PC secure
 - Personalize
 - Wireless
 - Settings
 - Sign in to your PC
5. After configuring the basic items, the Windows®8 tutorial appears. Watch this to learn more about Windows®8 functionalities.

Windows® 8 lock screen

The Windows®8 lock screen may appear when your ASUS Transformer Book enters the Windows®8 operating system. To proceed, tap on the lock screen or press any key on your ASUS Transformer Book's keyboard.

Hotspots


Onscreen hotspots allow you to launch programs and access the settings of your ASUS Transformer Book. The functions in these hotspots can be activated using the touchpad.

Hotspots on a running app



Hotspots on the Start screen



Hotspot	Action
upper left corner	<p>Hover your mouse pointer on the upper left corner then tap on the recent app's thumbnail to revert back to that running app.</p> <hr/> <p>If you launched more than one app, slide down to show all running apps.</p>
lower left corner	<p>From a running app screen:</p> <p>Hover your mouse pointer on the lower left corner then tap on the Start screen's thumbnail to go back to the Start screen.</p> <hr/> <p>NOTE: You can also press the Windows key  on your keyboard to go back to the Start screen.</p> <hr/> <p>From the Start screen:</p> <p>Hover your mouse pointer on the lower left corner then tap on the running app's thumbnail to go back to that app.</p>
top side	<p>Hover your mouse pointer on the top side until it changes to a hand icon. Drag then drop the app to a new location.</p> <hr/> <p>NOTE: This hotspot function only works on a running app or when you want to use the Snap feature. For more details, refer to the Snap feature under <i>Working with Windows® apps</i>.</p> <hr/>
upper or lower right corner	<p>Hover your mouse pointer on the upper or lower right corner to launch the Charm bar.</p>

Working with Windows® apps

Use your ASUS Transformer Book's touch screen display panel, touchpad, or keyboard to launch, customize, and close apps.

Launching apps

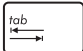
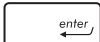


Tap an app to launch it.



Position your mouse pointer over the app then left-click or tap once to launch it.



Press  twice then use the arrow keys to browse through the apps. Press  to launch an app.

Customizing apps

You can move, resize, or unpin apps from the Start screen using the following steps:

Moving apps



Tap and hold the app tile then drag it to a new location.




Double-tap on the app then drag and drop the app to a new location.

Resizing apps



1. Swipe down the app tile to select and launch the settings bar.

2. Tap  to reduce or  to enlarge the app tile.



Right-click on the app to activate its settings bar then tap



or



.

Unpinning apps



1. Swipe down the app tile to select and launch the settings bar.

2. Tap  to unpin an app.



Right-click on the app to activate the settings bar then tap



.

Closing apps



Tap and hold the top side of the running app then drag it down to the bottom of the screen to close it.



1. Move your mouse pointer on the top side of the launched app then wait for the pointer to change to a hand icon.
2. Drag then drop the app to the bottom of the screen to close it.



From the running app's screen, press alt + f4.

Accessing the Apps screen

Aside from the apps already pinned on your Start screen, you can also open other applications through the Apps screen.




Horizontal scroll bar

Launching the Apps screen

Launch the Apps screen using your ASUS Transformer Book's touch screen display panel, touchpad, or keyboard.



1. Swipe from the top or bottom edge of the screen to launch the **All Apps** bar.

2. Tap  to show all installed apps in your Notebook PC.



3. Swipe from the top edge to launch the **All Apps** bar.

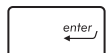


4. From the Start screen, press  +  to select the **All**

Apps icon




then press




Pinning more apps on the Start screen

You can pin more apps on the Start screen using your touch screen display panel or touchpad.



1. In the Apps screen, swipe down the app to select and launch the settings bar.
2. Tap  to pin the selected app on the Start screen.



1. Position the mouse pointer over the app you want to pin on the Start screen.
2. Right-click on the app to activate its settings.
3. Tap on the  icon.

Charm bar

The Charm bar is a toolbar that can be triggered on the right side of your screen. It consists of several tools that allow you to share applications and provide quick access for customizing the settings of your ASUS Transformer Book.



Charm Bar

Launching the Charm bar

NOTE: When called out, the Charm bar initially appears as a set of white icons. The image above shows how the Charm bar looks like once activated.

Use your ASUS Transformer Book's touch screen display panel, touchpad, or keyboard to launch the Charm bar.



Swipe from the right edge of the screen to launch the **Charm bar**.



Move your mouse pointer on the upper or lower right corner of the screen.



Press  + .

Inside the Charm bar



Search

This tool allows you to look for files, applications, or programs in your ASUS Transformer Book.



Share

This tool allows you to share applications via social networking sites or email.



Start

This tool reverts the display back to the Start screen. From the Start screen, you can also use this to return to a recently opened app.



Devices

This tool allows you to access and share files with the devices attached to your ASUS Transformer Book such as an external display or printer.



Settings

This tool allows you to access the PC settings of your ASUS Transformer Book.

Snap feature

The Snap feature displays two apps side-by-side, allowing you to work or switch between apps.

IMPORTANT! Ensure that your ASUS Transformer Book's screen resolution is set to 1366 x 768 pixels or higher before using the Snap feature.



Snap bar

Using Snap

Use your ASUS Transformer Book's touch screen display panel, touchpad, or keyboard to activate and use Snap.







1. Launch the app you wish to snap.
2. Tap and hold the app's topmost part then drag it to the left or right side of the screen until the snap bar appears.
3. Launch another app.



1. Launch the app you wish to snap.
2. Hover the mouse point on the top side of your screen.
3. Once the pointer changes to a hand icon, drag then drop the app to the left or right side of the display panel.
4. Launch another app.



1. Launch the app you wish to snap.
2. Press  + .
3. Launch another app.
4. To switch between apps, press  + .

Other keyboard shortcuts

Using the keyboard, you can also use the following shortcuts to help you launch applications and navigate Windows® 8.



Switches between the Start screen and the last running app



Launches the desktop



Launches the **Computer** window on Desktop mode



Opens the **File** search pane



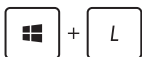
Opens the **Share** pane



Opens the **Settings** pane



Opens the **Devices** pane



Activates the Lock screen



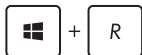
Minimizes the **Internet Explorer** window



Opens the **Second screen** pane



Opens the **Apps** search pane



Opens the **Run** window



Opens **Ease of Access Center**



Opens the **Settings** search pane



Opens a menu box of Windows® tools



Launches the magnifier icon and zooms in your screen



Zooms out your screen



Opens the **Narrator Settings**



Enables the **print screen** function