

Test Laboratory: Compliance Certification Services Inc.

D2450V2 SN-728 Body

DUT: Dipole 2450 MHz; Type: D2450V2; Serial: D2450V2 - SN:728

Communication System: CW; Frequency: 2450 MHz; Duty Cycle: 1:1

Medium parameters used: $f = 2450$ MHz; $\sigma = 1.99$ mho/m; $\epsilon_r = 50.5$; $\rho = 1000$ kg/m³

Phantom section: Flat Section

Air Temperature: 24.2 deg C; Liquid Temperature: 23.2 deg C

Area Scan Find Secondary Maximum Within 2dB and with a peak SAR value greater than 0.0012W/kg

DASY4 Configuration:

- Probe: EX3DV4 - SN3554; ConvF(6.18, 6.18, 6.18);
- Sensor-Surface: 3mm (Mechanical Surface Detection)
- Electronics: DAE4 Sn558; Calibrated: 2011/7/26
- Phantom: Flat Phantom ELI4.0; Type: QDOVA001BA; Serial: SN: 1052
- Measurement SW: DASY4, V4.7 Build 80; Postprocessing SW: SEMCAD, V1.8 Build 186

Pin=250mW,d=10mm/Area Scan (7x9x1): Measurement grid: dx=15mm, dy=15mm

Maximum value of SAR (measured) = 17.5 mW/g

Pin=250mW,d=10mm/Zoom Scan (7x7x7)/Cube 0: Measurement grid: dx=5mm, dy=5mm, dz=5mm

Reference Value = 88.9 V/m; Power Drift = -0.036 dB

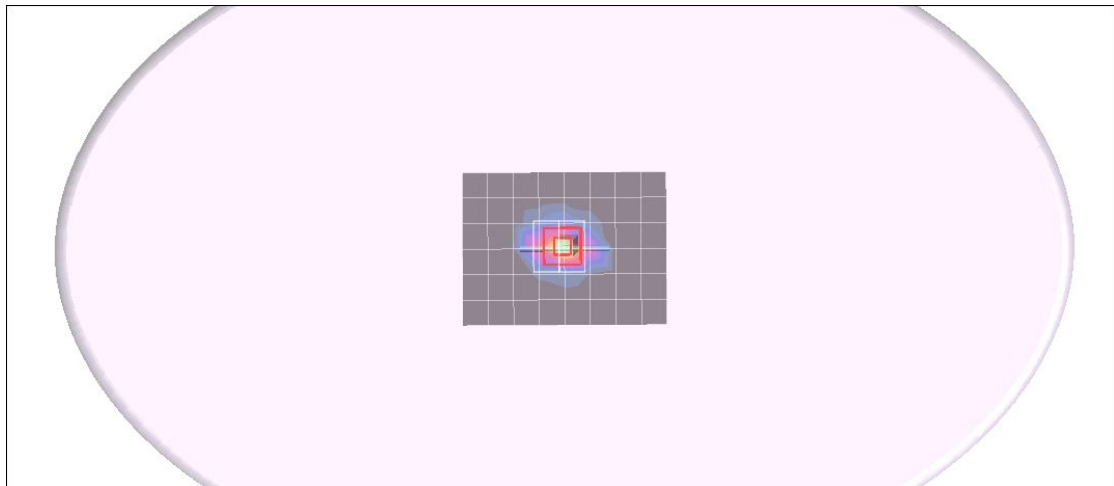
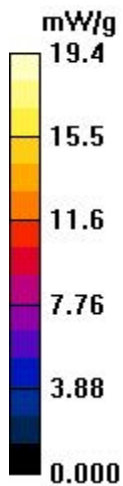
Peak SAR (extrapolated) = 28.5 W/kg

SAR(1 g) = 13.2 mW/g; SAR(10 g) = 6.06 mW/g

Maximum value of SAR (measured) = 17.9 mW/g

Pin=250mW,d=10mm/Z Scan (1x1x11): Measurement grid: dx=20mm, dy=20mm, dz=10mm

Maximum value of SAR (measured) = 19.4 mW/g



SAR(x,y,z,f0)

SAR; Z Scan: Value Along Z, X=0, Y=0

