



**FCC OET BULLETIN 65 SUPPLEMENT C
IC RSS-102 ISSUE 4**

SAR EVALUATION REPORT

**For
802.11bgn 2x2 and Bluetooth Combo Module**

MODEL: AR5B197

**FCC ID: PPD-AR5B197
IC: 4104A-AR5B197**

REPORT NUMBER: 10U13189-2A2

ISSUE DATE: September 27, 2010

Prepared for

**ATHEROS COMMUNICATIONS, INC.
5480 GREAT AMERICA PARKWAY
SANTA CLARA, CA 95054, U.S.A.**

Prepared by

**COMPLIANCE CERTIFICATION SERVICES
47173 BENICIA STREET
FREMONT, CA 94538, U.S.A.
TEL: (510) 771-1000
FAX: (510) 661-0888**



NVLAP LAB CODE 200065-0

Revision History

| <u>Rev.</u> | <u>Issue Date</u> | <u>Revisions</u> | <u>Revised By</u> |
|-------------|--------------------|--|-------------------|
| -- | June 2, 2010 | Initial Issue | -- |
| | August 23, 2010 | -Change from original application to Class II permissive SAR test report -Reduce b mode output power and measure SAR testing with respect to power level certified in original filing -Added g mode SAR testing | Devin Chang |
| A | Sept 09, 2010 | Revised based upon KDB 510165 response | Devin Chang |
| A1 | September 22, 2010 | Updated report, incl. the following Page 5: Updated KDB 616217 to "616217 D03 SAR Supp Note and Netbook Laptop V01" Page 5: Fixed typo "Electronic Probe kit" to Dielectric Probe Kit) Page 7: Updated "30 mm" to "3.0 cm", "52 mm" to "5.2 cm" and "17.9 cm" to "29.0 cm" Page 13: Updated "Cal. due date" to "Cal. date" Page 19, 20 and 21: Updated separation distance "17.9 cm" to "29 cm" Page 22, 23 and 24: Added separation distance of 15 cm from the end of antennas. | Sunny Shih |
| A2 | September 27, 2010 | Updated report based on reviewer's comments include: <ul style="list-style-type: none"> - Updated description in Section 1 and 5 - Renamed antenna configurations to "horizontal up/down" and "vertical up/down". - Added the following notes based on SAR distribution plots: <ul style="list-style-type: none"> .. 2 cm for horizontal up and down antenna configurations, and .. 9 cm for vertical up and down antenna configurations | Sunny Shih |

TABLE OF CONTENTS

| | |
|--|-----------|
| 1. ATTESTATION OF TEST RESULTS | 4 |
| 2. TEST METHODOLOGY | 5 |
| 3. FACILITIES AND ACCREDITATION | 5 |
| 4. CALIBRATION AND UNCERTAINTY | 5 |
| 4.1. <i>MEASURING INSTRUMENT CALIBRATION</i> | 5 |
| 4.2. <i>MEASUREMENT UNCERTAINTY</i> | 6 |
| 5. EQUIPMENT UNDER TEST | 7 |
| 6. SYSTEM SPECIFICATIONS | 8 |
| 7. TISSUE DIELECTRIC PARAMETERS CHECK | 9 |
| 7.1. <i>TISSUE PARAMETERS CHECK RESULTS FOR 2450 MHZ</i> | 10 |
| 8. SYSTEM VERIFICATION | 13 |
| 8.1. <i>SYSTEM CHECK RESULTS FOR D2450V2</i> | 13 |
| 9. OUTPUT POWER VERIFICATION | 18 |
| 10. SUMMARY OF SAR TEST RESULTS | 19 |
| 10.1. <i>ANTENNA POSITIONED VERTICALLY</i> | 19 |
| 10.1.1 <i>SAR Test Result with Antenna Vertical Up</i> | 20 |
| 10.2.1 <i>SAR Test Result with Antenna Vertical Down</i> | 21 |
| 10.2. <i>ANTENNA POSITIONED HORIZONTALLY</i> | 22 |
| 10.2.2 <i>SAR Test Result with Antenna Horizontal Up</i> | 23 |
| 10.2.3 <i>SAR Test Result with Antenna Horizontal Down</i> | 24 |
| 11. Enhanced Energy Coupling | 25 |
| 12. SAR Test Procedures | 26 |
| 12.1. <i>DASY4 SAR MEASUREMENT PROCEDURE</i> | 26 |
| 13. SAR TEST PLOTS | 27 |
| 14. ATTACHMENTS | 35 |

1. ATTESTATION OF TEST RESULTS

| | |
|--------------------|--|
| COMPANY NAME: | ATHEROS COMMUNICATIONS, INC. 5480 GREAT AMERICA PARKWAY SANTA CLARA, CA 95054 |
| EUT DESCRIPTION: | 802.11bgn 2x2 and Bluetooth Combo Module |
| MODEL NUMBER: | AR5B197 |
| DEVICE CATEGORY: | Portable |
| EXPOSURE CATEGORY: | General Population/Uncontrolled Exposure |
| DATE TESTED: | May 24 - 25, 2010 |

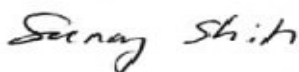
| FCC / IC Rule Parts | Freq. Range [MHz] | The Highest 1g SAR mW/g | Limit (mW/g) |
|---------------------|-----------------------------|---|--------------|
| 15.247 / RSS-102 | 2412 - 2462 (b/g/n mode) | 802.11g: 0.463 (Note: 0.4 is used per KDB inquiry 510165 for purpose of applying KDB 626217 Supplement procedures) - (Antenna Horizontal Up) with the most conservative antenna-to-user distance of 3 cm. - Antenna-to-antenna separation distance to prevent hot spot overlapping: 3 cm | 1.6 |

| Applicable Standards | Test Results |
|--|--------------|
| FCC OET Bulletin 65 Supplement C 01-01 IC RSS 102 Issue 4 | Pass |

Compliance Certification Services, Inc. (CCS) tested the above equipment in accordance with the requirements set forth in the above standards. All indications of Pass/Fail in this report are opinions expressed by CCS based on interpretations and/or observations of test results. Measurement Uncertainties were not taken into account and are published for informational purposes only. The test results show that the equipment tested is capable of demonstrating compliance with the requirements as documented in this report.

Note: The results documented in this report apply only to the tested sample, under the conditions and modes of operation as described herein. This document may not be altered or revised in any way unless done so by CCS and all revisions are duly noted in the revisions section. Any alteration of this document not carried out by CCS will constitute fraud and shall nullify the document. This report must not be used by the client to claim product certification, approval, or endorsement by NVLAP, NIST, any agency of the Federal Government, or any agency of any government (NIST Handbook 150, Annex A). This report is written to support regulatory compliance of the applicable standards stated above.

Approved & Released For CCS By:



SUNNY SHIH
 ENGINEERING SUPERVISOR
 COMPLIANCE CERTIFICATION SERVICES

Tested By:



DEVIN CHANG
 EMC ENGINEER
 COMPLIANCE CERTIFICATION SERVICES

2. TEST METHODOLOGY

FCC OET Bulletin 65 Supplement C 01-01 and the following specific FCC test procedures:

- KDB 248227 SAR measurement procedures for 802.11a/b/g transmitters
- KDB 616217 D03 SAR Supplemental consideration for Notebook/Netbook/Laptop and Tablet

3. FACILITIES AND ACCREDITATION

The test sites and measurement facilities used to collect data are located at 47173 Benicia Street, Fremont, California, USA.

CCS is accredited by NVLAP, Laboratory Code 200065-0. The full scope of accreditation can be viewed at <http://www.ccsemc.com>.

4. CALIBRATION AND UNCERTAINTY

4.1. MEASURING INSTRUMENT CALIBRATION

The measuring equipment utilized to perform the tests documented in this report has been calibrated in accordance with the manufacturer's recommendations, and is traceable to recognized national standards.

| Name of Equipment | Manufacturer | Type/Model | Serial No. | Cal. Due date | | |
|------------------------------|---------------|-------------|------------|-----------------------------|----|------|
| | | | | MM | DD | Year |
| Robot - Six Axes | Stäubli | RX90BL | N/A | | | N/A |
| Robot Remote Control | Stäubli | CS7MB | 3403-91535 | | | N/A |
| DASY4 Measurement Server | SPEAG | SEUMS001BA | 1041 | | | N/A |
| Probe Alignment Unit | SPEAG | LB (V2) | 261 | | | N/A |
| SAM Phantom (SAM1) | SPEAG | QD000P40CA | 1185 | | | N/A |
| SAM Phantom (SAM2) | SPEAG | QD000P40CA | 1050 | | | N/A |
| Oval Flat Phantom (ELI 4.0) | SPEAG | QD OVA001 B | 1003 | | | N/A |
| Dielectric Probe Kit | HP | 85070C | N/A | | | N/A |
| S-Parameter Network Analyzer | Agilent | 8753ES-6 | MY40001647 | 11 | 22 | 2010 |
| Signal Generator | Agilent | 8753ES-6 | MY40001647 | 11 | 22 | 2010 |
| E-Field Probe | SPEAG | EX3DV3 | 3531 | 2 | 23 | 2011 |
| Data Acquisition Electronics | SPEAG | DAE3 V1 | 500 | 9 | 15 | 2010 |
| System Validation Dipole | SPEAG | D2450V2* | 706 | 4 | 18 | 2013 |
| ESG Vector Signal Generator | Agilent | E4438C | US44271090 | 9 | 17 | 2010 |
| Amplifier | Mini-Circuits | ZVE-8G | 90606 | | | N/A |
| Amplifier | Mini-Circuits | ZHL-42W | D072701-5 | | | N/A |
| Simulating Liquid | SPAEG | M2450 | N/A | Within 24 hrs of first test | | |

***Note:** Per KDB 450824 D02 requirements for dipole calibration, CCS has adopted three years calibration intervals. On annual basis, each measurement dipole has been evaluated and is in compliance with the following criteria:

1. There is no physical damage on the dipole
2. System validation with specific dipole is within 10% of calibrated value.
3. Return-loss is within 20% of calibrated measurement (Attachment 3)
4. Impedance is within 5Ω of calibrated measurement (Attachment 4)

4.2. MEASUREMENT UNCERTAINTY

Measurement uncertainty for 300 MHz to 3 GHz averaged over 1 gram

| Component | error, % | Probe Distribution | Divisor | Sensitivity | U (Xi), % |
|--|----------|--------------------|---------|-------------|-----------|
| Measurement System | | | | | |
| Probe Calibration (k=1) @ Body 2450 MHz | 5.50 | Normal | 1 | 1 | 5.50 |
| Axial Isotropy | 1.15 | Rectangular | 1.732 | 0.7071 | 0.47 |
| Hemispherical Isotropy | 2.30 | Rectangular | 1.732 | 0.7071 | 0.94 |
| Boundary Effect | 0.90 | Rectangular | 1.732 | 1 | 0.52 |
| Probe Linearity | 3.45 | Rectangular | 1.732 | 1 | 1.99 |
| System Detection Limits | 1.00 | Rectangular | 1.732 | 1 | 0.58 |
| Readout Electronics | 0.30 | Normal | 1 | 1 | 0.30 |
| Response Time | 0.80 | Rectangular | 1.732 | 1 | 0.46 |
| Integration Time | 2.60 | Rectangular | 1.732 | 1 | 1.50 |
| RF Ambient Conditions - Noise | 3.00 | Rectangular | 1.732 | 1 | 1.73 |
| RF Ambient Conditions - Reflections | 3.00 | Rectangular | 1.732 | 1 | 1.73 |
| Probe Positioner Mechanical Tolerance | 0.40 | Rectangular | 1.732 | 1 | 0.23 |
| Probe Positioning with respect to Phantom | 2.90 | Rectangular | 1.732 | 1 | 1.67 |
| Extrapolation, Interpolation and Integration | 1.00 | Rectangular | 1.732 | 1 | 0.58 |
| Test Sample Related | | | | | |
| Test Sample Positioning | 2.90 | Normal | 1 | 1 | 2.90 |
| Device Holder Uncertainty | 3.60 | Normal | 1 | 1 | 3.60 |
| Output Power Variation - SAR Drift | 5.00 | Rectangular | 1.732 | 1 | 2.89 |
| Phantom and Tissue Parameters | | | | | |
| Phantom Uncertainty (shape and thickness) | 4.00 | Rectangular | 1.732 | 1 | 2.31 |
| Liquid Conductivity - deviation from target | 5.00 | Rectangular | 1.732 | 0.64 | 1.85 |
| Liquid Conductivity - measurement | -3.08 | Normal | 1 | 0.64 | -1.97 |
| Liquid Permittivity - deviation from target | 5.00 | Rectangular | 1.732 | 0.6 | 1.73 |
| Liquid Permittivity - measurement | -2.44 | Normal | 1 | 0.6 | -1.46 |
| Combined Standard Uncertainty Uc(y) = | | | | | 9.75 |
| Expanded Uncertainty U, Coverage Factor = 2, > 95 % Confidence = | | | | 19.51 | % |
| Expanded Uncertainty U, Coverage Factor = 2, > 95 % Confidence = | | | | 1.55 | dB |

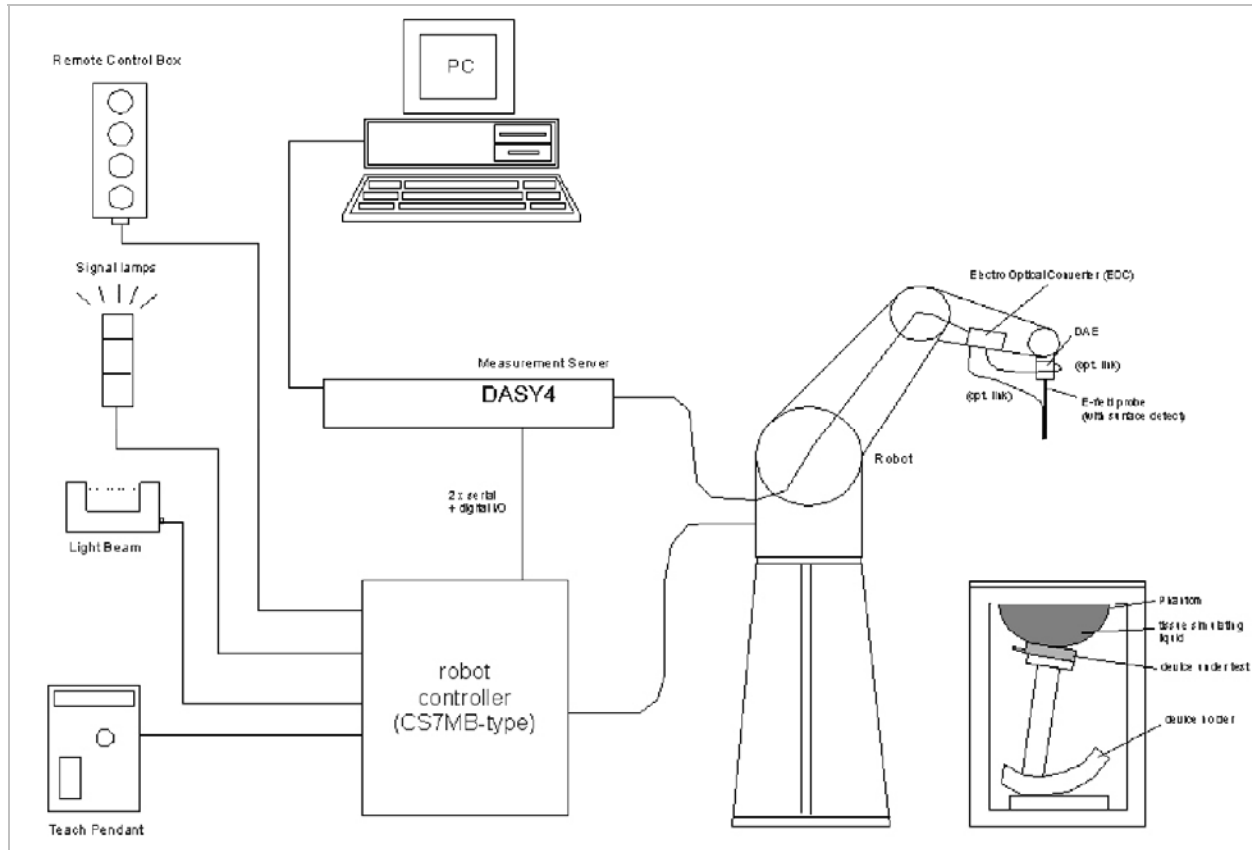
Measurement uncertainty for 300 MHz to 3 GHz averaged over 10 gram

| Component | error, % | Probe Distribution | Divisor | Sensitivity | U (Xi), % |
|--|----------|--------------------|---------|-------------|-----------|
| Measurement System | | | | | |
| Probe Calibration (k=1) @ 2450 MHz | 5.50 | Normal | 1 | 1 | 5.50 |
| Axial Isotropy | 1.15 | Rectangular | 1.732 | 0.7071 | 0.47 |
| Hemispherical Isotropy | 2.30 | Rectangular | 1.732 | 0.7071 | 0.94 |
| Boundary Effect | 0.90 | Rectangular | 1.732 | 1 | 0.52 |
| Probe Linearity | 3.45 | Rectangular | 1.732 | 1 | 1.99 |
| System Detection Limits | 1.00 | Rectangular | 1.732 | 1 | 0.58 |
| Readout Electronics | 0.30 | Normal | 1 | 1 | 0.30 |
| Response Time | 0.80 | Rectangular | 1.732 | 1 | 0.46 |
| Integration Time | 2.60 | Rectangular | 1.732 | 1 | 1.50 |
| RF Ambient Conditions - Noise | 3.00 | Rectangular | 1.732 | 1 | 1.73 |
| RF Ambient Conditions - Reflections | 3.00 | Rectangular | 1.732 | 1 | 1.73 |
| Probe Positioner Mechanical Tolerance | 0.40 | Rectangular | 1.732 | 1 | 0.23 |
| Probe Positioning with respect to Phantom | 2.90 | Rectangular | 1.732 | 1 | 1.67 |
| Extrapolation, Interpolation and Integration | 1.00 | Rectangular | 1.732 | 1 | 0.58 |
| Test Sample Related | | | | | |
| Test Sample Positioning | 2.90 | Normal | 1 | 1 | 2.90 |
| Device Holder Uncertainty | 3.60 | Normal | 1 | 1 | 3.60 |
| Output Power Variation - SAR Drift | 5.00 | Rectangular | 1.732 | 1 | 2.89 |
| Phantom and Tissue Parameters | | | | | |
| Phantom Uncertainty (shape and thickness) | 4.00 | Rectangular | 1.732 | 1 | 2.31 |
| Liquid Conductivity - deviation from target | 5.00 | Rectangular | 1.732 | 0.43 | 1.24 |
| Liquid Conductivity - measurement | -3.08 | Normal | 1 | 0.43 | -1.32 |
| Liquid Permittivity - deviation from target | 5.00 | Rectangular | 1.732 | 0.49 | 1.41 |
| Liquid Permittivity - measurement uncertainty | -2.44 | Normal | 1 | 0.49 | -1.20 |
| Combined Standard Uncertainty Uc(y), % = | | | | | 9.46 |
| Expanded Uncertainty U, Coverage Factor = 2, > 95 % Confidence = | | | | 18.91 | % |
| Expanded Uncertainty U, Coverage Factor = 2, > 95 % Confidence = | | | | 1.50 | dB |

5. EQUIPMENT UNDER TEST

| | | |
|---|--|---|
| 802.11 bgn 2x2 and Bluetooth Combo Module | | |
| Antenna tested: | <u>Manufactured</u> Wistron | <u>Part number</u> Chain 0(Main): 81.EBJ15.005 Chain 1(Aux): 81.EBJ15.005 |
| The most conservative antenna-to-user separation distances used during the test: | 3.0 cm from Main/Aux antennas-to-user (refer to setup diagram in section 10.1) | |
| Antenna-to-antenna physical separation distances used during the test with horizontal placement | 5.2 cm from Main (Chain 0)-to-Aux (Chain 1) antenna (refer to setup diagram in Section 10.2) | |
| Antenna-to-antenna physical separation distances used during the test with vertical placement | 29.0 cm from Main (Chain 0)-to-Aux (Chain 1) antenna (refer to setup diagram in Section 10.1) | |
| The most conservative physical separation distance between Main/Aux antennas to avoid SAR distribution overlap. | 3 cm for horizontal up and down antenna configurations (see page 31 - 34) 9 cm for vertical up and down antenna configurations (see page 27 - 30) | |

6. SYSTEM SPECIFICATIONS



The DASY4 system for performing compliance tests consists of the following items:

- A standard high precision 6-axis robot (Stäubli RX family) with controller, teach pendant and software. An arm extension for accommodating the data acquisition electronics (DAE).
- A dosimetric probe, i.e., an isotropic E-field probe optimized and calibrated for usage in tissue simulating liquid. The probe is equipped with an optical surface detector system.
- A data acquisition electronics (DAE) which performs the signal amplification, signal multiplexing, AD-conversion, offset measurements, mechanical surface detection, collision detection, etc. The unit is battery powered with standard or rechargeable batteries. The signal is optically transmitted to the EOC.
- The function of the measurement server is to perform the time critical tasks such as signal filtering, control of the robot operation and fast movement interrupts.
- A probe alignment unit which improves the (absolute) accuracy of the probe positioning.
- A computer operating Windows 2000 or Windows XP.
- DASY4 software.
- Remote controls with teach pendant and additional circuitry for robot safety such as warning lamps, etc.
- The SAM twin phantom enabling testing left-hand and right-hand usage.
- The device holder for handheld mobile phones.
- Tissue simulating liquid mixed according to the given recipes.
- Validation dipole kits allowing validating the proper functioning of the system.

7. TISSUE DIELECTRIC PARAMETERS CHECK

The simulating liquids should be checked at the beginning of a series of SAR measurements to determine if the dielectric parameters are within the tolerances of the specified target values. For frequencies in 300 MHz to 2 GHz, the measured conductivity and relative permittivity should be within $\pm 5\%$ of the target values. For frequencies in the range of 2–3 GHz and above the measured conductivity should be within $\pm 5\%$ of the target values. The measured relative permittivity tolerance can be relaxed to no more than $\pm 10\%$.

Reference Values of Tissue Dielectric Parameters for Body (for 300 – 3000 MHz and 5800 MHz)

The body tissue parameters that have not been specified in P1528 are derived from the tissue dielectric parameters computed from the 4-Cole-Cole equations and extrapolated according to the head parameters specified in IEEE Standard 1528.

| Target Frequency (MHz) | Body (Supplement C 01-01) | |
|------------------------|---------------------------|----------------|
| | ϵ_r | σ (S/m) |
| 300 | 58.20 | 0.92 |
| 450 | 56.70 | 0.94 |
| 835 | 55.20 | 0.97 |
| 900 | 55.00 | 1.05 |
| 915 | 55.00 | 1.06 |
| 1450 | 54.00 | 1.30 |
| 1610 | 53.80 | 1.40 |
| 1800 – 2000 | 53.30 | 1.52 |
| 2450 | 52.70 | 1.95 |
| 3000 | 52.00 | 2.73 |
| 5800 | 48.20 | 6.00 |

(ϵ_r = relative permittivity, σ = conductivity and $\rho = 1000 \text{ kg/m}^3$)

7.1. TISSUE PARAMETERS CHECK RESULTS FOR 2450 MHZ

Simulating Liquid Dielectric Parameters for Body 2450 MHz

Room Ambient Temperature = 24°C; Relative humidity = 41%

Measured by: Devin Chang

| f (MHz) | Liquid Parameters | | | Measured | Target | Delta (%) | Limit (%) |
|---------|-------------------|-------|---|----------|--------|-----------|-----------|
| 2450 | e' | 51.42 | Relative Permittivity (ϵ_r): | 51.415 | 52.7 | -2.44 | ± 5 |
| | e'' | 13.98 | Conductivity (σ): | 1.905 | 1.95 | -2.32 | ± 5 |

Liquid Check

Ambient temperature: 24 deg. C; Liquid temperature: 23 deg. C

May 24, 2010 09:26 AM

| Frequency | e' | e'' |
|--------------------|----------------|----------------|
| 2400000000. | 51.5960 | 13.7587 |
| 2405000000. | 51.5665 | 13.7449 |
| 2410000000. | 51.5435 | 13.7426 |
| 2415000000. | 51.5137 | 13.7305 |
| 2420000000. | 51.4823 | 13.7535 |
| 2425000000. | 51.4722 | 13.7743 |
| 2430000000. | 51.4513 | 13.8105 |
| 2435000000. | 51.4231 | 13.8432 |
| 2440000000. | 51.4123 | 13.8675 |
| 2445000000. | 51.4143 | 13.9150 |
| 2450000000. | 51.4154 | 13.9754 |
| 2455000000. | 51.4115 | 14.0378 |
| 2460000000. | 51.4009 | 14.0746 |
| 2465000000. | 51.4211 | 14.1242 |
| 2470000000. | 51.4102 | 14.1738 |
| 2475000000. | 51.3963 | 14.2151 |
| 2480000000. | 51.3778 | 14.2520 |
| 2485000000. | 51.3671 | 14.2605 |
| 2490000000. | 51.3414 | 14.2625 |
| 2495000000. | 51.3091 | 14.2705 |
| 2500000000. | 51.2847 | 14.2436 |

The conductivity (σ) can be given as:

$$\sigma = \omega \epsilon_0 e'' = 2 \pi f \epsilon_0 e''$$

where $f = \text{target } f * 10^6$

$$\epsilon_0 = 8.854 * 10^{-12}$$

Simulating Liquid Dielectric Parameters for Body 2450 MHz

Room Ambient Temperature = 24°C; Relative humidity = 46%

Measured by: Devin Chang

| f (MHz) | Liquid Parameters | | | Measured | Target | Delta (%) | Limit (%) |
|---------|-------------------|-------|---|----------|--------|-----------|-----------|
| 2450 | e' | 51.84 | Relative Permittivity (ϵ_r): | 51.844 | 52.7 | -1.62 | ± 5 |
| | e'' | 13.87 | Conductivity (σ): | 1.890 | 1.95 | -3.08 | ± 5 |

Liquid Check

Ambient temperature: 24 deg. C; Liquid temperature: 23 deg. C

May 25, 2010 08:37 AM

| Frequency | e' | e'' |
|--------------------|----------------|----------------|
| 2400000000. | 52.0097 | 13.6356 |
| 2405000000. | 51.9790 | 13.6594 |
| 2410000000. | 51.9592 | 13.6741 |
| 2415000000. | 51.9264 | 13.6672 |
| 2420000000. | 51.9117 | 13.6925 |
| 2425000000. | 51.8922 | 13.7134 |
| 2430000000. | 51.8663 | 13.7291 |
| 2435000000. | 51.8708 | 13.7528 |
| 2440000000. | 51.8669 | 13.7706 |
| 2445000000. | 51.8629 | 13.8105 |
| 2450000000. | 51.8437 | 13.8662 |
| 2455000000. | 51.8365 | 13.9042 |
| 2460000000. | 51.8353 | 13.9176 |
| 2465000000. | 51.8251 | 13.9538 |
| 2470000000. | 51.8029 | 13.9759 |
| 2475000000. | 51.7950 | 13.9968 |
| 2480000000. | 51.7769 | 14.0156 |
| 2485000000. | 51.7681 | 14.0290 |
| 2490000000. | 51.7525 | 14.0484 |
| 2495000000. | 51.7354 | 14.0670 |
| 2500000000. | 51.7116 | 14.0581 |

The conductivity (σ) can be given as:

$$\sigma = \omega \epsilon_0 e'' = 2 \pi f \epsilon_0 e''$$

where $f = \text{target } f * 10^6$

$$\epsilon_0 = 8.854 * 10^{-12}$$

Simulating Liquid Dielectric Parameter Check Result @ Body 2450 MHz

Room Ambient Temperature = 24°C; Relative humidity = 38%

Measured by: Devin Chang

| f (MHz) | Liquid Parameters | | | Measured | Target | Delta (%) | Limit (%) |
|---------|-------------------|-------|---|----------|--------|-----------|-----------|
| 2450 | e' | 53.03 | Relative Permittivity (ϵ_r): | 53.032 | 52.7 | 0.63 | ± 5 |
| | e'' | 14.21 | Conductivity (σ): | 1.937 | 1.95 | -0.69 | ± 5 |

Liquid Check

Ambient temperature: 24 deg. C; Liquid temperature: 23 deg. C

July 25, 2010 9:42 AM

| Frequency | e' | e'' |
|-------------------|-----------------|-----------------|
| 2400000000 | 53.12801 | 13.96142 |
| 2405000000 | 53.11591 | 14.03482 |
| 2410000000 | 53.10131 | 14.10002 |
| 2415000000 | 53.09771 | 14.14352 |
| 2420000000 | 53.08381 | 14.16972 |
| 2425000000 | 53.07921 | 14.18792 |
| 2430000000 | 53.08491 | 14.18122 |
| 2435000000 | 53.06911 | 14.18732 |
| 2440000000 | 53.06471 | 14.20182 |
| 2445000000 | 53.03571 | 14.22952 |
| 2450000000 | 53.03181 | 14.20862 |
| 2455000000 | 52.96281 | 14.18522 |
| 2460000000 | 52.92671 | 14.15712 |
| 2465000000 | 52.86291 | 14.11992 |
| 2470000000 | 52.84751 | 14.07232 |
| 2475000000 | 52.83241 | 14.04812 |
| 2480000000 | 52.84021 | 14.05522 |
| 2485000000 | 52.83341 | 14.07432 |
| 2490000000 | 52.83581 | 14.13162 |
| 2495000000 | 52.83771 | 14.20542 |
| 2500000000 | 52.83281 | 14.30832 |

The conductivity (σ) can be given as:

$$\sigma = \omega \epsilon_0 e'' = 2 \pi f \epsilon_0 e''$$

where $f = \text{target } f * 10^6$

$$\epsilon_0 = 8.854 * 10^{-12}$$

8. SYSTEM VERIFICATION

The system performance check is performed prior to any usage of the system in order to verify SAR system accuracy. The system performance check verifies that the system operates within its specifications of $\pm 10\%$.

System Performance Check Measurement Conditions

- The measurements were performed in the flat section of the SAM twin phantom filled with Body simulating liquid of the following parameters.
- The DASY4 system with an Isotropic E-Field Probe EX3DV3-SN: 3531 was used for the measurements.
- The dipole was mounted on the small tripod so that the dipole feed point was positioned below the center marking of the flat phantom section and the dipole was oriented parallel to the body axis (the long side of the phantom). The standard measuring distance was 10 mm (above 1 GHz) and 15 mm (below 1 GHz) from dipole center to the simulating liquid surface.
- The coarse grid with a grid spacing of 15 mm was aligned with the dipole.
 For 5 GHz band - The coarse grid with a grid spacing of 10 mm was aligned with the dipole.
- Special 7x7x7 (2.4 GHz) fine cube was chosen for cube integration and Special 8x8x10 (5 GHz) fine cube was chosen for cube integration
- Distance between probe sensors and phantom surface was set to 3 mm.
 For 5 GHz band - Distance between probe sensors and phantom surface was set to 2.5 mm
- The dipole input powers (forward power) were 100 mW.
- The results are normalized to 1 W input power.

Reference SAR Values for HEAD & BODY-tissue from calibration certificate of SPEAG.

| System validation dipole | Cal. certificate # | Cal. date | SAR Avg (mW/g) | | |
|--------------------------|--------------------|-----------|----------------------|------|------|
| | | | Tissue: | Head | Body |
| D2450V2 | D2450V2-706_Apr10 | 04/19/10 | SAR _{1g} : | 51.6 | 52.4 |
| | | | SAR _{10g} : | 24.4 | 24.5 |

8.1. SYSTEM CHECK RESULTS FOR D2450V2

Ambient Temperature = 24°C; Relative humidity = 38%

Measured by: Devin Chang

| System validation dipole | Date Tested | Measured (Normalized to 1 W) | | Target | Delta (%) | Tolerance (%) |
|--------------------------|-------------|------------------------------|------|--------|-----------|---------------|
| | | Tissue: | Body | | | |
| D2450V2 | 05/18/10 | SAR _{1g} : | 52.5 | 52.4 | 0.19 | ± 10 |
| | | SAR _{10g} : | 24.3 | 24.5 | -0.82 | |
| D2450V2 | 07/25/10 | SAR _{1g} : | 52.0 | 52.4 | -0.76 | ± 10 |
| | | SAR _{10g} : | 24.6 | 24.5 | 0.41 | |

SYSTEM CHECK PLOT

Date/Time: 5/24/2010 9:52:26 AM

Test Laboratory: Compliance Certification Services

System Performance Check - D2450V2

DUT: Dipole ; Type: D2450V2; Serial: 706

Communication System: System Check Signal - CW; Frequency: 2450 MHz; Duty Cycle: 1:1
Medium parameters used: $f = 2450$ MHz; $\sigma = 1.9$ mho/m; $\epsilon_r = 51.4$; $\rho = 1000$ kg/m³
Phantom section: Flat Section

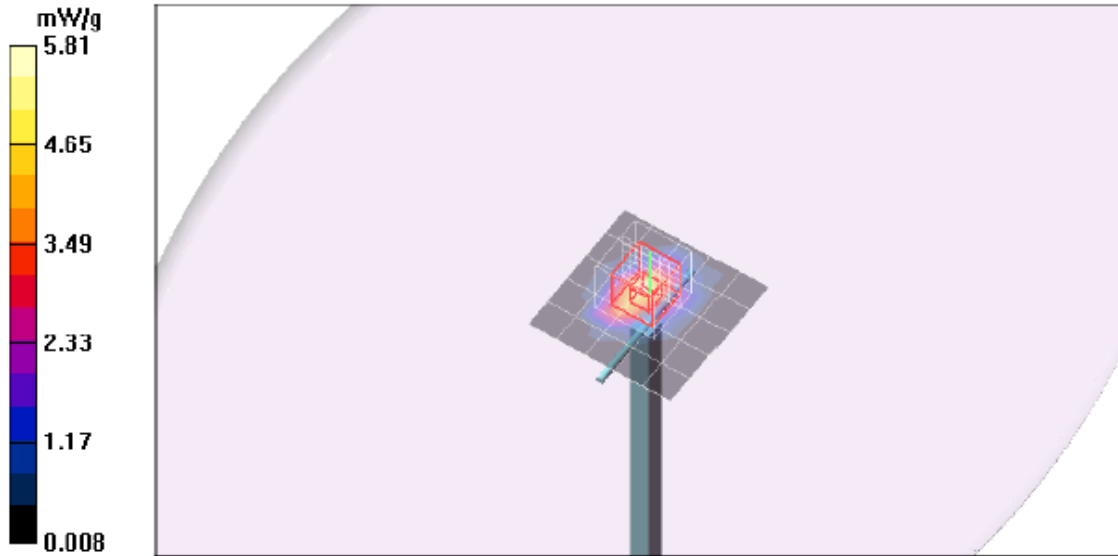
Room Ambient Temperature: 24.0 deg. C; Liquid Temperature: 23.0 deg. C

DASY4 Configuration:

- Area Scan setting - Find Secondary Maximum Within: 2.0 dB and with a peak SAR value greater than 0.0012W/kg
- Probe: EX3DV3 - SN3531; ConvF(7.58, 7.58, 7.58); Calibrated: 2/23/2010
- Sensor-Surface: 3mm (Mechanical Surface Detection)
- Electronics: DAE3 Sn500; Calibrated: 9/15/2009
- Phantom: Flat Phantom ELI4.0; Type: QDOVA001BA; Serial: SN:1003
- Measurement SW: DASY4, V4.7 Build 80; Postprocessing SW: SEMCAD, V1.8 Build 186

d=10mm, Pin=100mW/Area Scan (6x6x1): Measurement grid: dx=15mm, dy=15mm
Maximum value of SAR (measured) = 5.81 mW/g

d=10mm, Pin=100mW/Zoom Scan (7x7x7)/Cube 0: Measurement grid: dx=5mm, dy=5mm, dz=5mm
Reference Value = 58.7 V/m; Power Drift = 0.143 dB
Peak SAR (extrapolated) = 10.8 W/kg
SAR(1 g) = 5.25 mW/g; SAR(10 g) = 2.43 mW/g
Maximum value of SAR (measured) = 6.81 mW/g



SYSTEM CHECK – Z Plot

Date/Time: 5/24/2010 10:08:16 AM

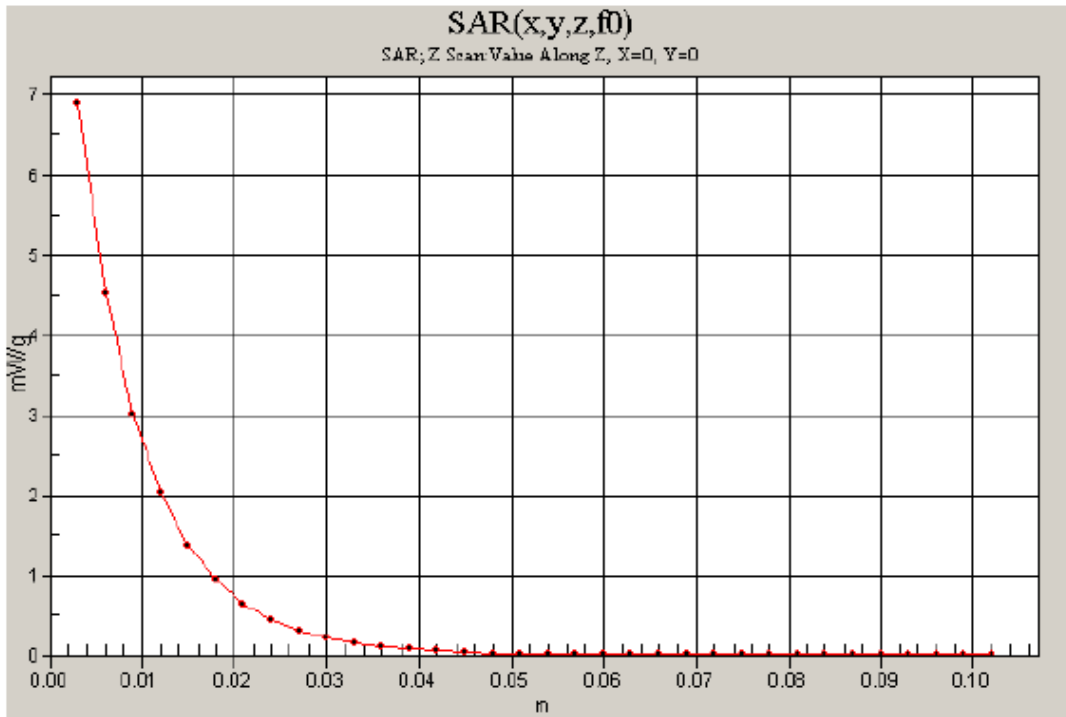
Test Laboratory: Compliance Certification Services

System Performance Check - D2450V2

DUT: Dipole ; Type: D2450V2; Serial: 706

Communication System: System Check Signal - CW; Frequency: 2450 MHz; Duty Cycle: 1:1

d=10mm, Pin=100mW/Z Scan (1x1x34): Measurement grid: dx=20mm, dy=20mm, dz=3mm
Maximum value of SAR (measured) = 6.88 mW/g



SYSTEM CHECK PLOT

Date/Time: 7/25/2010 10:45:26 AM

Test Laboratory: Compliance Certification Services

System Performance Check - D2450V2

DUT: Dipole ; Type: D2450V2; Serial: 706

Communication System: System Check Signal - CW; Frequency: 2450 MHz; Duty Cycle: 1:1
Medium parameters used: $f = 2450$ MHz; $\sigma = 1.94$ mho/m; $\epsilon_r = 53$; $\rho = 1000$ kg/m³
Phantom section: Flat Section

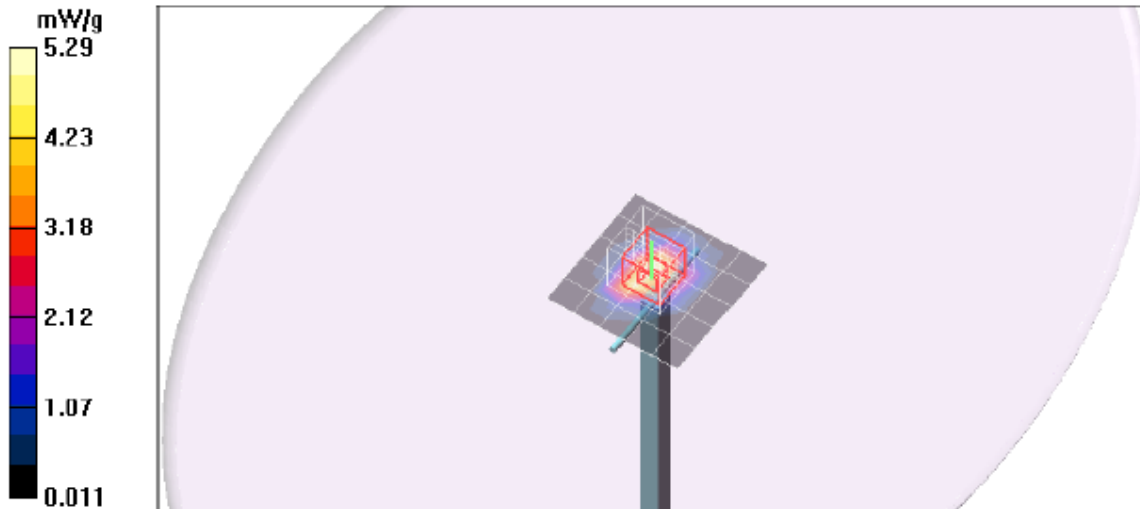
Room Ambient Temperature: 24.0 deg. C; Liquid Temperature: 23.0 deg. C

DASY4 Configuration:

- Area Scan setting - Find Secondary Maximum Within: 2.0 dB and with a peak SAR value greater than 0.0012W/kg
- Probe: EX3DV3 - SN3531; ConvF(7.58, 7.58, 7.58); Calibrated: 2/23/2010
- Sensor-Surface: 3mm (Mechanical Surface Detection)
- Electronics: DAE3 Sn500; Calibrated: 9/15/2009
- Phantom: Flat Phantom ELI4.0; Type: QDOVA001BA; Serial: SN:1003
- Measurement SW: DASY4, V4.7 Build 80; Postprocessing SW: SEMCAD, V1.8 Build 186

d=10mm, Pin=100mW/Area Scan (6x6x1): Measurement grid: dx=15mm, dy=15mm
Maximum value of SAR (measured) = 5.29 mW/g

d=10mm, Pin=100mW/Zoom Scan (7x7x7)/Cube 0: Measurement grid: dx=5mm, dy=5mm, dz=5mm
Reference Value = 59.6 V/m; Power Drift = -0.061 dB
Peak SAR (extrapolated) = 10.4 W/kg
SAR(1 g) = 5.2 mW/g; SAR(10 g) = 2.46 mW/g
Maximum value of SAR (measured) = 6.75 mW/g



SYSTEM CHECK – Z Plot

Date/Time: 7/25/2010 11:01:20 AM

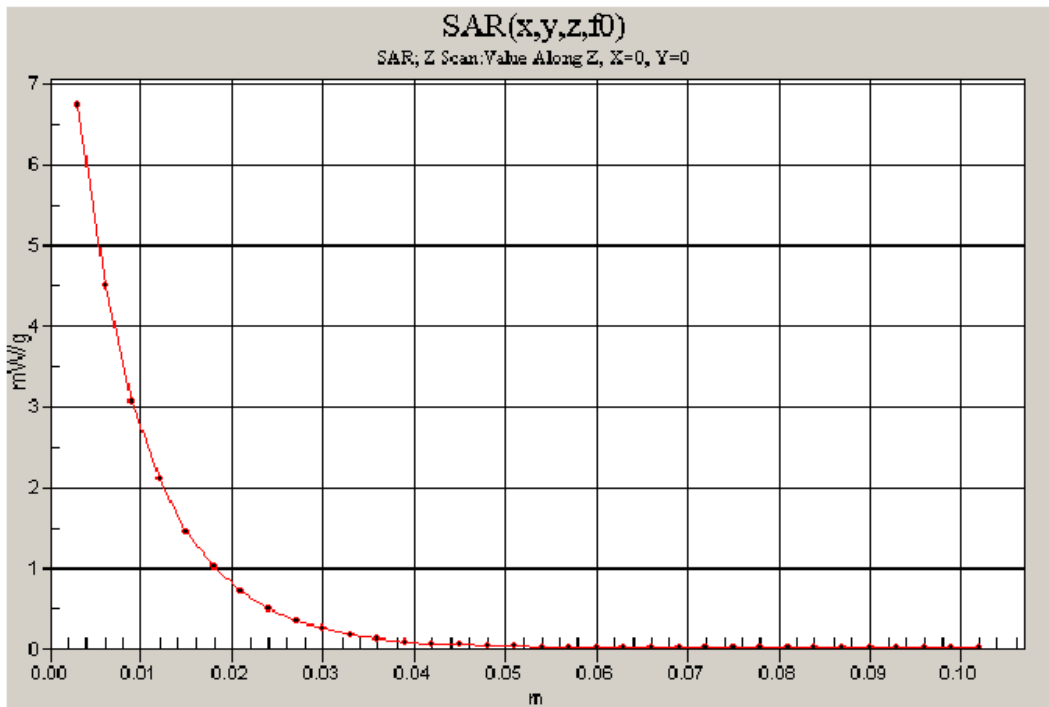
Test Laboratory: Compliance Certification Services

System Performance Check - D2450V2

DUT: Dipole ; Type: D2450V2; Serial: 706

Communication System: System Check Signal - CW; Frequency: 2450 MHz;Duty Cycle: 1:1

d=10mm, Pin=100mW/Z Scan (1x1x34): Measurement grid: dx=20mm, dy=20mm, dz=3mm
Maximum value of SAR (measured) = 6.74 mW/g



9. OUTPUT POWER VERIFICATION

Results

| Mode | Channel | Freq. (MHz) | Average Output Power (dBm) | | |
|--------------|---------|-------------|----------------------------|---------|-------------|
| | | | Chain 0 | Chain 1 | Total Power |
| 802.11b | 1 | 2412 | 14.2 | 14.5 | 17.4 |
| | 6 | 2437 | 14.2 | 14.4 | 17.3 |
| | 11 | 2462 | 15.2 | 15.1 | 18.2 |
| 802.11g | 1 | 2412 | 13.7 | 14.3 | 17.0 |
| | 6 | 2437 | 16.2 | 16.6 | 19.4 |
| | 11 | 2462 | 12.8 | 12.1 | 15.5 |
| 802.11n HT20 | 1 | 2412 | 12.5 | 12.5 | 15.5 |
| | 6 | 2437 | 16.3 | 16.7 | 19.5 |
| | 11 | 2462 | 11.4 | 10.8 | 14.1 |
| 802.11n HT40 | 3 | 2412 | 10.3 | 10.2 | 13.3 |
| | 6 | 2437 | 13.2 | 13.5 | 16.4 |
| | 9 | 2462 | 9.4 | 9.1 | 12.3 |

Note: During 802.11b, 802.11g, H20 and H40 mode of operations, both antennas are always transmitting simultaneously. This module is not capable of single antenna transmitting mode in either b/g/H20/H40. Single chain transmission is only occurred in the Bluetooth mode of operation. HT20 average output power is within 0.1 dB of 802.11g highest output power thus only 802.11g mode of operation was selected for final SAR evaluation. HT40 average output power is about 3dB lower than 802.11g power thus HT40 was not tested during final SAR evaluation.

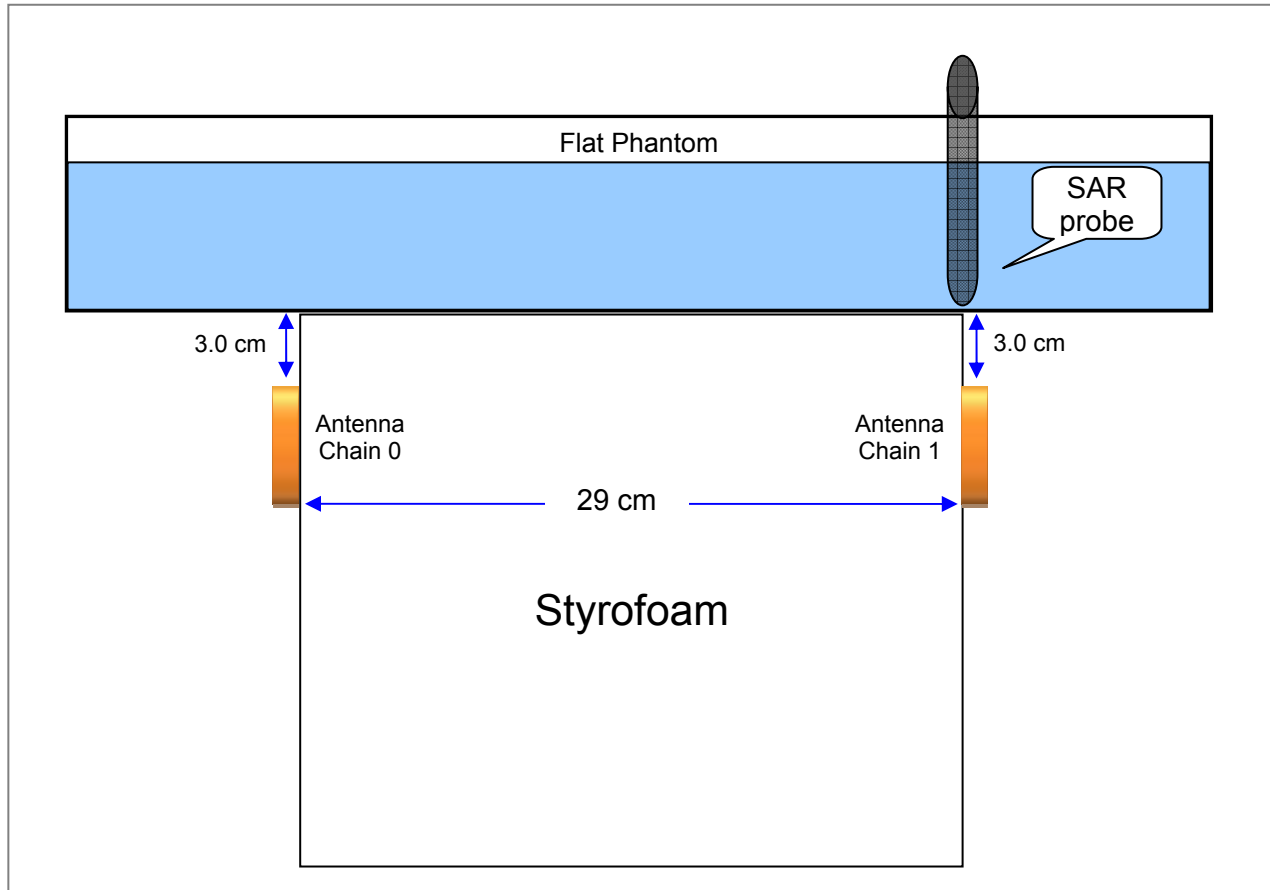
Bluetooth Output Power

Based upon test report/ RF990501E01-1 on file with FCC under FCC ID:PPD-AR5B197, the max. output power for GFSK modulation is 1.3 mW; 8DPSK modulation is 2.0 mW and $\pi/4$ DQPASK=1.7 mW. The highest output power is below low power threshold of 60/f(GHz).

10. SUMMARY OF SAR TEST RESULTS

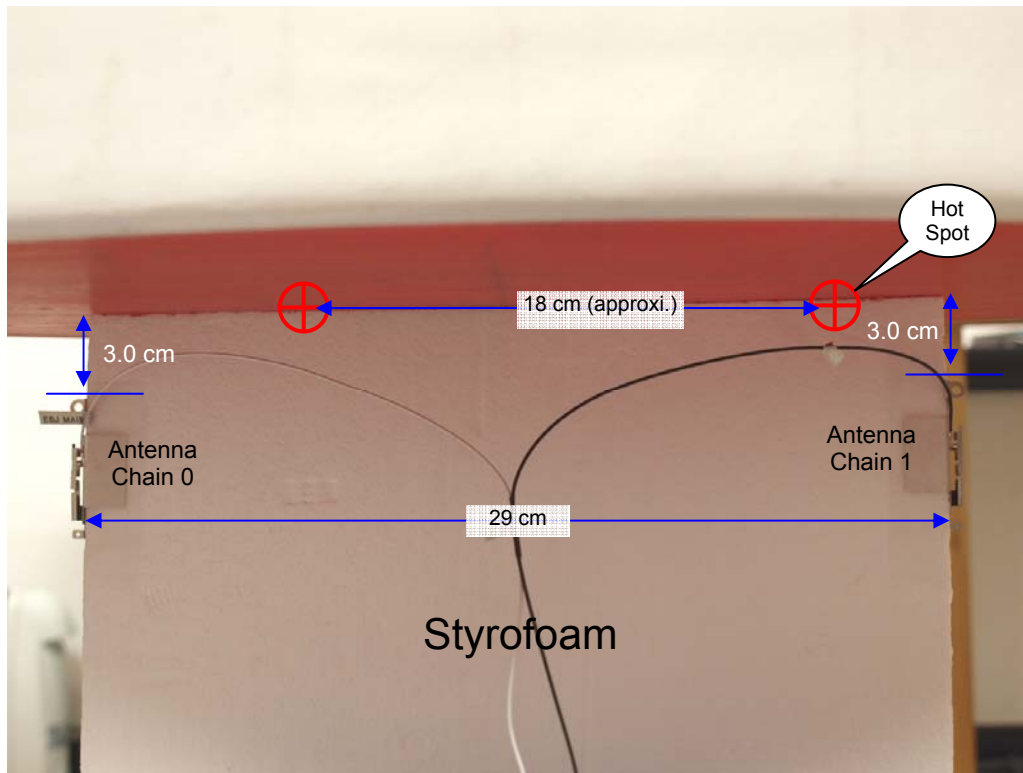
10.1. ANTENNA POSITIONED VERTICALLY

Setup diagram



10.1.1 SAR Test Result with Antenna Vertical Up

Test setup photo with Antenna Vertical Up (Bottom of antenna)



Test result

| Mode | Channel | Freq. (MHz) | Avg Output Pwr | | 1-g SAR (W/kg) | |
|--------------------|---------|-------------|----------------|---------|----------------|---------|
| | | | Chain 0 | Chain 1 | Chain 0 | Chain 1 |
| 802.11b (2 x 2) | 1 | 2412 | 14.2 | 14.5 | | |
| | 6 | 2437 | 14.2 | 14.4 | | |
| | 11 | 2462 | 15.2 | 15.1 | 0.089 | 0.067 |
| 802.11g (2 x 2) | 1 | 2412 | 13.7 | 14.3 | | |
| | 6 | 2437 | 16.2 | 16.6 | 0.160 | 0.167 |
| | 11 | 2462 | 12.8 | 12.1 | | |

Note: KDB 248227: when the measured SAR value at the highest average output power is less than 0.8 W/kg, testing of other channels are optional.

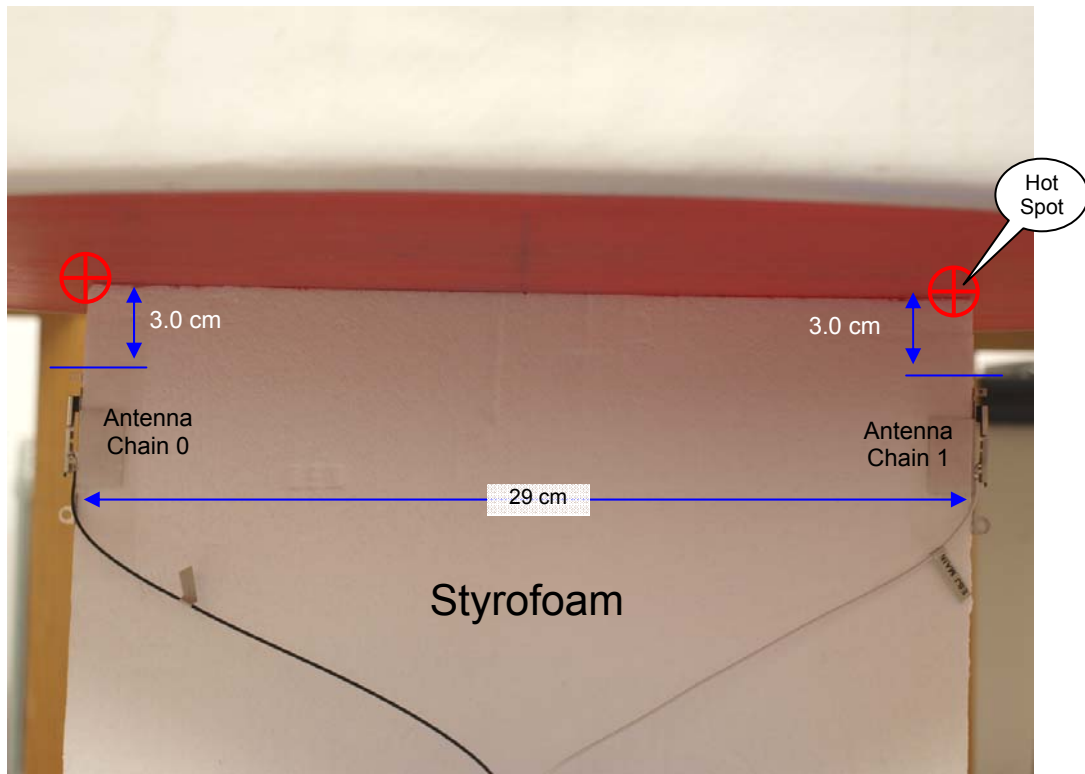
Test Reduction: Due the highest measured SAR value at the highest average output power is less than 0.8 W/kg, other channels are not tested.

Based upon SAR distribution plot in page 27 and 28 of this report, SAR hot spot will be distributed in approx. 6 grids with 1.5 cm x 1.5 cm dimension for each grid. To prevent SAR overlapping and contribute higher SAR value which main and aux are transmitting simultaneously, Main-to-Aux antenna separation shall be separated by more than 6 grids (1.5 cm x 6) = 9 cm.

SAR hot spot observation: The hot spot is not distributed near the antenna elements but at the closest point of each antenna cable.

10.2.1 SAR Test Result with Antenna Vertical Down

Test setup photo with Antenna Vertical Down (Tip of antenna)



Test result

| Mode | Channel | Freq. (MHz) | Avg Output Pwr | | 1-g SAR (W/kg) | |
|--------------------|---------|-------------|----------------|---------|----------------|---------|
| | | | Chain 0 | Chain 1 | Chain 0 | Chain 1 |
| 802.11b (2 x 2) | 1 | 2412 | 14.2 | 14.5 | | |
| | 6 | 2437 | 14.2 | 14.4 | | |
| | 11 | 2462 | 15.2 | 15.1 | 0.020 | 0.025 |
| 802.11g (2 x 2) | 1 | 2412 | 13.7 | 14.3 | | |
| | 6 | 2437 | 16.2 | 16.6 | 0.030 | 0.029 |
| | 11 | 2462 | 12.8 | 12.1 | | |

Note: KDB 248227: when the measured SAR value at the highest average output power is less than 0.8 W/kg, testing of other channels are optional.

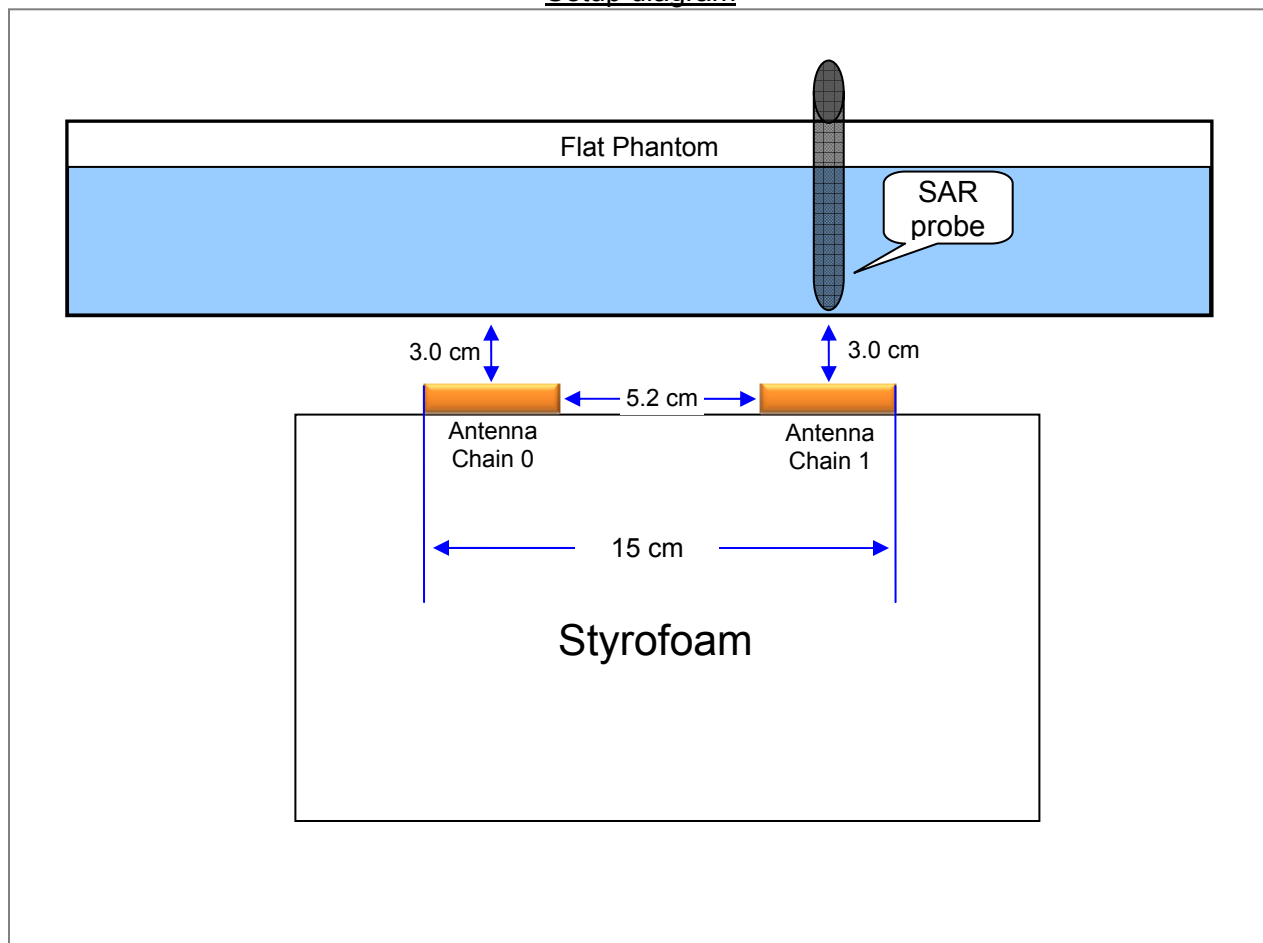
Test Reduction: Due the highest measured SAR value at the highest average output power is less than 0.8 W/kg, other channels are not tested.

Based upon SAR distribution plot in page 29 and 30 of this report, SAR hot spot will be distributed in approx. 6 grids with 1.5 cm x 1.5 cm dimension for each grid. To prevent SAR overlapping and contribute higher SAR value which main and aux are transmitting simultaneously, Main-to-Aux antenna separation shall be separated by more than 6 grids (1.5 cm x 6) = 9 cm.

Hot Spot observation: Hot spots are distributed at proximity of antenna elements.

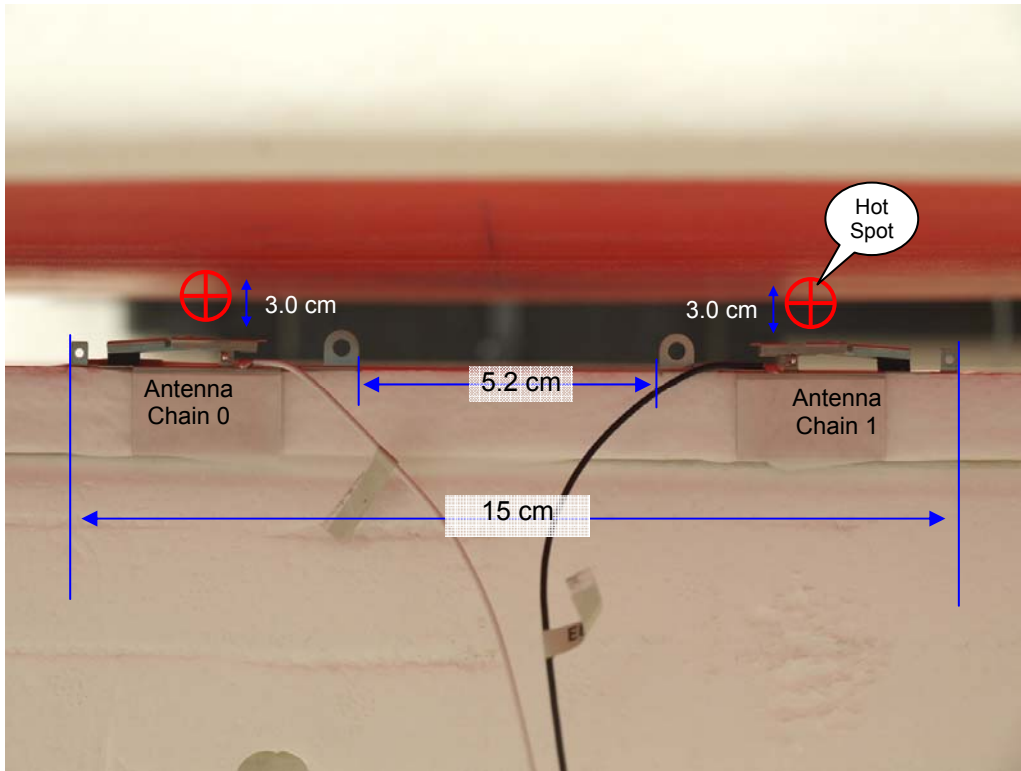
10.2. ANTENNA POSITIONED HORIZONTALLY

Setup diagram



10.2.2 SAR Test Result with Antenna Horizontal Up

Test setup photo with Antenna Horizontal Up



Test result

| Mode | Channel | Freq. (MHz) | Avg Output Pwr | | 1-g SAR (W/kg) | |
|--------------------|---------|-------------|----------------|---------|----------------|---------|
| | | | Chain 0 | Chain 1 | Chain 0 | Chain 1 |
| 802.11b (2 x 2) | 1 | 2412 | 14.2 | 14.5 | | |
| | 6 | 2437 | 14.2 | 14.4 | | |
| | 11 | 2462 | 15.2 | 15.1 | 0.280 | 0.322 |
| 802.11g (2 x 2) | 1 | 2412 | 13.7 | 14.3 | | |
| | 6 | 2437 | 16.2 | 16.6 | 0.401 | 0.463 |
| | 11 | 2462 | 12.8 | 12.1 | | |

Note: KDB 248227: when the measured SAR value at the highest average output power is less than 0.8 W/kg, testing of other channels are optional.

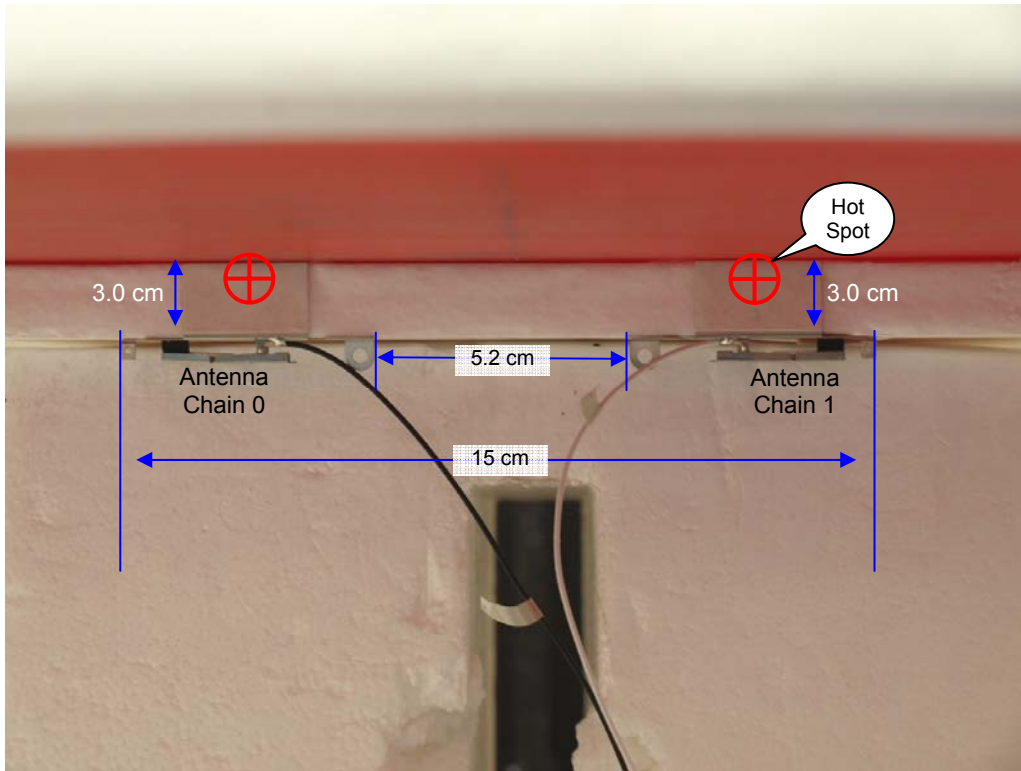
Test Reduction: Due the highest measured SAR value at the highest average output power is less than 0.8 W/kg, other channels are not tested.

Based upon SAR distribution plot in page 31 and 32 of this report, SAR hot spot will be distributed in approx. 2 grids with 1.5 cm x 1.5 cm dimension for each grid. To prevent SAR overlapping and contribute higher SAR value which main and aux are transmitting simultaneously, Main-to-Aux antenna separation shall be separated by more than 2 grids (1.5 cm x 2) = 3 cm.

SAR hot spots observation: The hot spot is near the center of antenna element.

10.2.3 SAR Test Result with Antenna Horizontal Down

Test setup photo with Antenna Horizontal Down



Test result

| Mode | Channel | Freq. (MHz) | Avg Output Pwr | | 1-g SAR (W/kg) | |
|--------------------|---------|-------------|----------------|---------|----------------|---------|
| | | | Chain 0 | Chain 1 | Chain 0 | Chain 1 |
| 802.11b (2 x 2) | 1 | 2412 | 14.2 | 14.5 | | |
| | 6 | 2437 | 14.2 | 14.4 | | |
| | 11 | 2462 | 15.2 | 15.1 | 0.271 | 0.266 |
| 802.11g (2 x 2) | 1 | 2412 | 13.7 | 14.3 | | |
| | 6 | 2437 | 16.2 | 16.6 | 0.238 | 0.379 |
| | 11 | 2462 | 12.8 | 12.1 | | |

Note: KDB 248227: when the measured SAR value at the highest average output power is less than 0.8 W/kg, testing of other channels are optional.

Test Reduction: Due the highest measured SAR value at the highest average output power is less than 0.8 W/kg, other channels are not tested.

Based upon SAR distribution plot in page 33 and 34 of this report, SAR hot spot will be distributed in approx. 2 grids with 1.5 cm x 1.5 cm dimension for each grid. To prevent SAR overlapping and contribute higher SAR value which main and aux are transmitting simultaneously, Main-to-Aux antenna separation shall be separated by more than 2 grids (1.5 cm x 2) = 3 cm.

SAR hot spots observation: The hot spot is near the center of antenna element.

11. Enhanced Energy Coupling

According to KDB 616217 in referencing to KDB 447498, the test configuration with the highest 1-g SAR must be used to determine if additional SAR evaluation is required due to enhanced energy coupling at increased separation distances.

From the test results below, additional 1-g SAR evaluation is not required.

| Worst-case test configuration | Band | Antenna-to-person distance (cm) | | Peak SAR (mW/g) | E-field (V/m) | Lower than Initial (%) |
|-------------------------------|---------|---------------------------------|-----|-----------------|---------------|------------------------|
| Antenna Horizontal 1 (Up) | 2.4 GHz | Initial | 3 | 0.463 | 17.18 | |
| | | 1 | 3.5 | 0.28 | 13.38 | 60.7% |
| | | 2 | 4 | 0.18 | 10.64 | 38.4% |

Due to the highest measured SAR value is 0.463 W/kg, thus only the most conservative configuration with highest measured SAR was tested.

Note: See section 10.2.1 worst-case test setup photo for most conservative SAR.

12. SAR Test Procedures

12.1. DASY4 SAR MEASUREMENT PROCEDURE

Step 1: Power Reference Measurement

The Power Reference Measurement and Power Drift Measurements are for monitoring the power drift of the device under test in the batch process. The Minimum distance of probe sensors to surface determines the closest measurement point to phantom surface. The minimum distance of probe sensors to surface is 2.1 mm. This distance cannot be smaller than the Distance of sensor calibration points to probe tip as defined in the probe properties (for example, 1.2 mm for an EX3DV3 probe type).

Step 2: Area Scan

The Area Scan is used as a fast scan in two dimensions to find the area of high field values, before doing a fine measurement around the hot spot. The sophisticated interpolation routines implemented in DASY4 software can find the maximum locations even in relatively coarse grids. When an Area Scan has measured all reachable points, it computes the field maximal found in the scanned area, within a range of the global maximum. The range (in dB) is specified in the standards for compliance testing. For example, a 2 dB range is required in IEEE Standard 1528, EN 50361 and IEC 62209 standards, whereby 3 dB is a requirement when compliance is assessed in accordance with the ARIB standard (Japan). If only one Zoom Scan follows the Area Scan, then only the absolute maximum will be taken as reference. For cases where multiple maximums are detected, the number of Zoom Scans has to be increased accordingly.

1. When the antennas are positioned at vertical orientation, at least 7x27x1 dimension was used to capture entire radiating elements.
2. When the antennas are positioned at horizontal orientation, at least 6x13x1 dimension was used to capture entire radiating elements.

Step 3: Zoom Scan

Zoom Scans are used to assess the peak spatial SAR values within a cubic averaging volume containing 1 g and 10 g of simulated tissue. Two independent Zoom Scan procedures with 7x7x9 mm zoom scan grid points within a cube whose base faces are centered on the maxima found in a preceding area scan job within the same procedure. Each of hot spot was labeled with cube 0. Due to two antennas are transmitting simultaneously, two cube 0s were reported to present individual hot spot. When the measurement is done, the Zoom Scan evaluates the averaged SAR for 1 g and 10 g and displays these values next to the job's label.

Step 4: Power drift measurement

The Power Drift Measurement measures the field at the same location as the most recent power reference measurement within the same procedure, and with the same settings. The Power Drift Measurement gives the field difference in dB from the reading conducted within the last Power Reference Measurement. This allows a user to monitor the power drift of the device under test within a batch process. The measurement procedure is the same as Step 1.

Step 5: Z-Scan

The Z Scan measures points along a vertical straight line. The line runs along the Z-axis of a one-dimensional grid. In order to get a reasonable extrapolation, the extrapolated distance should not be larger than the step size in Z-direction.

13. SAR TEST PLOTS

SAR Plot for Antenna Vertical Up - 802.11b Mode

Date/Time: 7/25/2010 3:07:54 PM

Test Laboratory: Compliance Certification Services

Antenna Vertical Up

DUT: Atheros; Type: NA; Serial: NA

Communication System: 802.11bg; Frequency: 2462 MHz; Duty Cycle: 1:1
Medium parameters used (interpolated): $f = 2462$ MHz; $\sigma = 1.94$ mho/m; $\epsilon_r = 52.9$; $\rho = 1000$ kg/m³
Phantom section: Flat Section

Room Ambient Temperature: 24.0 deg. C; Liquid Temperature: 23.0 deg. C

DASY4 Configuration:

- Area Scan setting - Find Secondary Maximum Within: 2.0 dB and with a peak SAR value greater than 0.0012W/kg
- Probe: EX3DV3 - SN3531; ConvF(7.58, 7.58, 7.58); Calibrated: 2/23/2010
- Sensor-Surface: 3mm (Mechanical Surface Detection)
- Electronics: DAE3 Sn500; Calibrated: 9/15/2009
- Phantom: Flat Phantom ELI4.0; Type: QDOVA001BA; Serial: SN:1003
- Measurement SW: DASY4, V4.7 Build 80; Postprocessing SW: SEMCAD, V1.8 Build 186

802.11b H-ch Mian&Aux Ant/Area Scan (9x29x1): Measurement grid: dx=15mm, dy=15mm

[Info: Interpolated medium parameters used for SAR evaluation.](#)

Maximum value of SAR (measured) = 0.095 mW/g

802.11b H-ch Mian&Aux Ant/Zoom Scan (Main) (7x7x9)/Cube 0: Measurement grid: dx=5mm, dy=5mm, dz=3mm

Reference Value = 7.05 V/m; Power Drift = -0.134 dB

Peak SAR (extrapolated) = 0.204 W/kg

SAR(1 g) = 0.089 mW/g; SAR(10 g) = 0.041 mW/g

[Info: Interpolated medium parameters used for SAR evaluation.](#)

Maximum value of SAR (measured) = 0.120 mW/g

802.11b H-ch Mian&Aux Ant/Zoom Scan (Aux) (7x7x9)/Cube 0: Measurement grid: dx=5mm, dy=5mm, dz=3mm

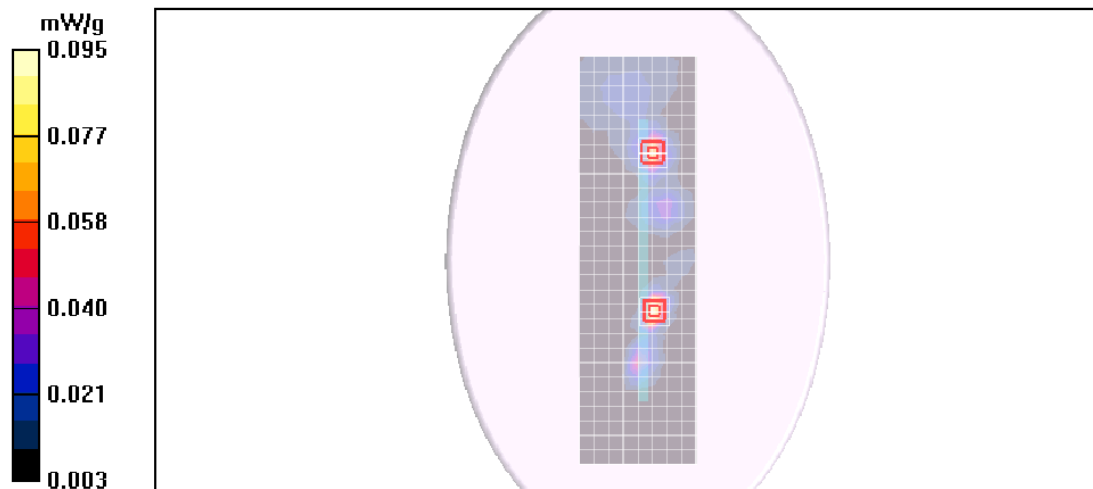
Reference Value = 7.05 V/m; Power Drift = -0.134 dB

Peak SAR (extrapolated) = 0.130 W/kg

SAR(1 g) = 0.067 mW/g; SAR(10 g) = 0.035 mW/g

[Info: Interpolated medium parameters used for SAR evaluation.](#)

Maximum value of SAR (measured) = 0.087 mW/g



SAR Plot for Antenna Vertical Up - 802.11g Mode

Date/Time: 7/25/2010 4:04:12 PM

Test Laboratory: Compliance Certification Services

Antenna Vertical Up

DUT: Atheros; Type: NA; Serial: NA

Communication System: 802.11bg; Frequency: 2462 MHz; Duty Cycle: 1:1
Medium parameters used (interpolated): $f = 2462$ MHz; $\sigma = 1.94$ mho/m; $\epsilon_r = 52.9$; $\rho = 1000$ kg/m³
Phantom section: Flat Section

Room Ambient Temperature: 24.0 deg. C; Liquid Temperature: 23.0 deg. C

DASY4 Configuration:

- Area Scan setting - Find Secondary Maximum Within: 2.0 dB and with a peak SAR value greater than 0.0012W/kg
- Probe: EX3DV3 - SN3531; ConvF(7.58, 7.58, 7.58); Calibrated: 2/23/2010
- Sensor-Surface: 3mm (Mechanical Surface Detection)
- Electronics: DAE3 Sn500; Calibrated: 9/15/2009
- Phantom: Flat Phantom ELI4.0; Type: QDOVA001BA; Serial: SN:1003
- Measurement SW: DASY4, V4.7 Build 80; Postprocessing SW: SEMCAD, V1.8 Build 186

802.11g M-ch Mian&Aux Ant/Area Scan (7x27x1): Measurement grid: dx=15mm, dy=15mm

[Info: Interpolated medium parameters used for SAR evaluation.](#)

Maximum value of SAR (measured) = 0.210 mW/g

802.11g M-ch Mian&Aux Ant/Zoom Scan (Main) (7x7x9)/Cube 0: Measurement grid: dx=5mm, dy=5mm, dz=3mm

Reference Value = 10.5 V/m; Power Drift = -0.162 dB

Peak SAR (extrapolated) = 0.367 W/kg

SAR(1 g) = 0.160 mW/g; SAR(10 g) = 0.072 mW/g

[Info: Interpolated medium parameters used for SAR evaluation.](#)

Maximum value of SAR (measured) = 0.219 mW/g

802.11g M-ch Mian&Aux Ant/Zoom Scan (Aux) (7x7x9)/Cube 0: Measurement grid: dx=5mm, dy=5mm, dz=3mm

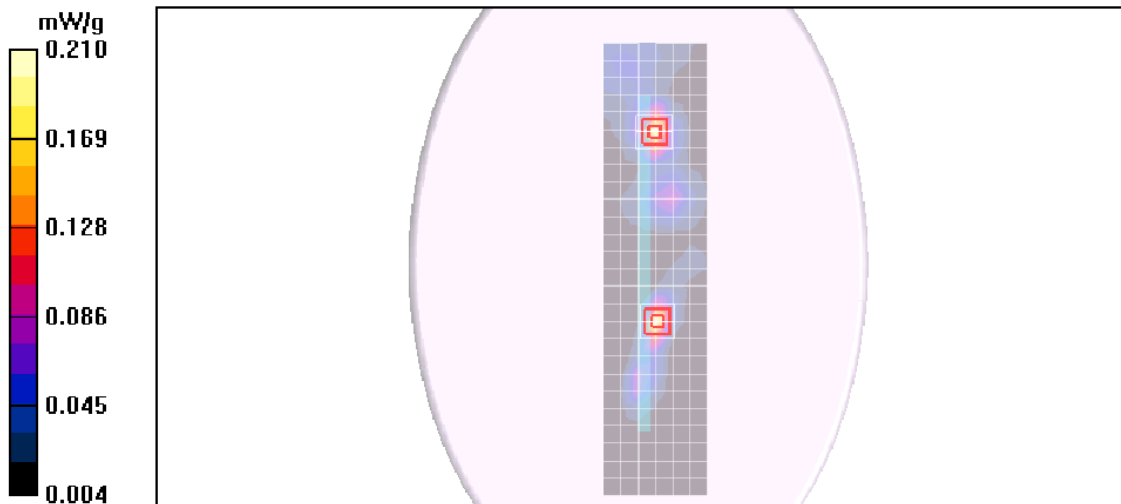
Reference Value = 10.5 V/m; Power Drift = -0.162 dB

Peak SAR (extrapolated) = 0.327 W/kg

SAR(1 g) = 0.167 mW/g; SAR(10 g) = 0.085 mW/g

[Info: Interpolated medium parameters used for SAR evaluation.](#)

Maximum value of SAR (measured) = 0.212 mW/g



SAR Plot for Antenna Vertical Down - 802.11b Mode

Date/Time: 7/25/2010 5:49:46 PM

Test Laboratory: Compliance Certification Services

Antenna Vertical Down

DUT: Atheros; Type: NA; Serial: NA

Communication System: 802.11bg; Frequency: 2462 MHz; Duty Cycle: 1:1
Medium parameters used (interpolated): $f = 2462$ MHz; $\sigma = 1.94$ mho/m; $\epsilon_r = 52.9$; $\rho = 1000$ kg/m³
Phantom section: Flat Section

Room Ambient Temperature: 24.0 deg. C; Liquid Temperature: 23.0 deg. C

DASY4 Configuration:

- Area Scan setting - Find Secondary Maximum Within: 2.0 dB and with a peak SAR value greater than 0.0012W/kg
- Probe: EX3DV3 - SN3531; ConvF(7.58, 7.58, 7.58); Calibrated: 2/23/2010
- Sensor-Surface: 3mm (Mechanical Surface Detection)
- Electronics: DAE3 Sn500; Calibrated: 9/15/2009
- Phantom: Flat Phantom ELI4.0; Type: QDOVA001BA; Serial: SN:1003
- Measurement SW: DASY4, V4.7 Build 80; Postprocessing SW: SEMCAD, V1.8 Build 186

802.11b H-ch Mian&Aux Ant/Area Scan (8x27x1): Measurement grid: dx=15mm, dy=15mm

[Info: Interpolated medium parameters used for SAR evaluation.](#)

Maximum value of SAR (measured) = 0.026 mW/g

802.11b H-ch Mian&Aux Ant/Zoom Scan (Main) (7x7x9)/Cube 0: Measurement grid: dx=5mm, dy=5mm, dz=3mm

Reference Value = 3.71 V/m; Power Drift = 0.082 dB

Peak SAR (extrapolated) = 0.036 W/kg

SAR(1 g) = 0.020 mW/g; SAR(10 g) = 0.014 mW/g

[Info: Interpolated medium parameters used for SAR evaluation.](#)

Maximum value of SAR (measured) = 0.024 mW/g

802.11b H-ch Mian&Aux Ant/Zoom Scan (Aux) (7x7x9)/Cube 0: Measurement grid: dx=5mm, dy=5mm, dz=3mm

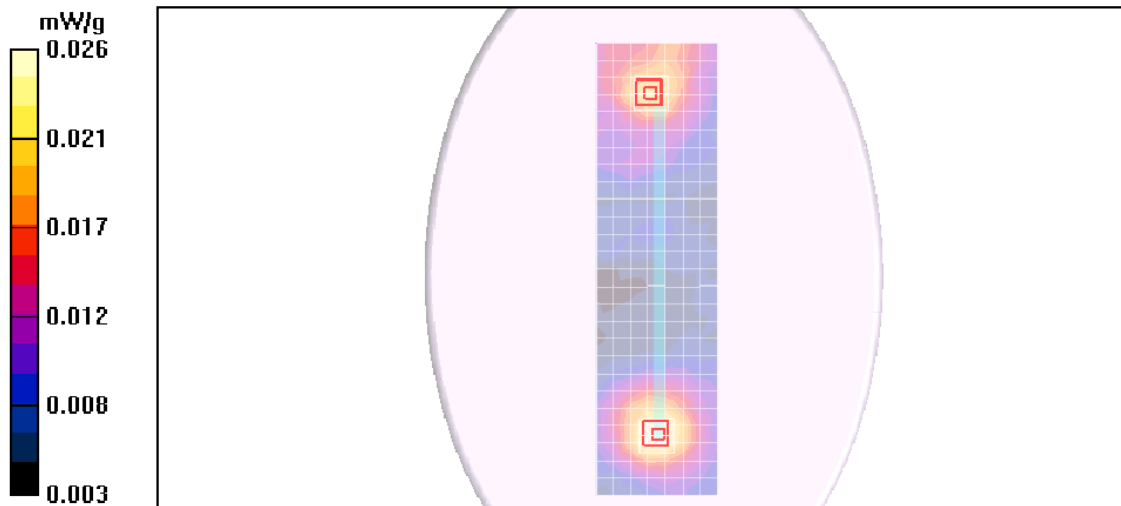
Reference Value = 3.71 V/m; Power Drift = 0.082 dB

Peak SAR (extrapolated) = 0.043 W/kg

SAR(1 g) = 0.025 mW/g; SAR(10 g) = 0.016 mW/g

[Info: Interpolated medium parameters used for SAR evaluation.](#)

Maximum value of SAR (measured) = 0.029 mW/g



SAR Plot for Antenna Vertical Down - 802.11g Mode

Date/Time: 7/25/2010 4:59:13 PM

Test Laboratory: Compliance Certification Services

Antenna Vertical Down

DUT: Atheros; Type: NA; Serial: NA

Communication System: 802.11bg; Frequency: 2437 MHz; Duty Cycle: 1:1
Medium parameters used (interpolated): $f = 2437$ MHz; $\sigma = 1.92$ mho/m; $\epsilon_r = 53.1$; $\rho = 1000$ kg/m³
Phantom section: Flat Section

Room Ambient Temperature: 24.0 deg. C; Liquid Temperature: 23.0 deg. C

DASY4 Configuration:

- Area Scan setting - Find Secondary Maximum Within: 2.0 dB and with a peak SAR value greater than 0.0012W/kg
- Probe: EX3DV3 - SN3531; ConvF(7.58, 7.58, 7.58); Calibrated: 2/23/2010
- Sensor-Surface: 3mm (Mechanical Surface Detection)
- Electronics: DAE3 Sn500; Calibrated: 9/15/2009
- Phantom: Flat Phantom ELI4.0; Type: QDOVA001BA; Serial: SN:1003
- Measurement SW: DASY4, V4.7 Build 80; Postprocessing SW: SEMCAD, V1.8 Build 186

802.11g M-ch Mian&Aux Ant/Area Scan (7x27x1): Measurement grid: dx=15mm, dy=15mm

[Info: Interpolated medium parameters used for SAR evaluation.](#)

Maximum value of SAR (measured) = 0.032 mW/g

802.11g M-ch Mian&Aux Ant/Zoom Scan (Main) (7x7x9)/Cube 0: Measurement grid: dx=5mm, dy=5mm, dz=3mm

Reference Value = 4.20 V/m; Power Drift = -0.044 dB

Peak SAR (extrapolated) = 0.051 W/kg

SAR(1 g) = 0.030 mW/g; SAR(10 g) = 0.019 mW/g

[Info: Interpolated medium parameters used for SAR evaluation.](#)

Maximum value of SAR (measured) = 0.035 mW/g

802.11g M-ch Mian&Aux Ant/Zoom Scan (Aux) (7x7x9)/Cube 0: Measurement grid: dx=5mm, dy=5mm, dz=3mm

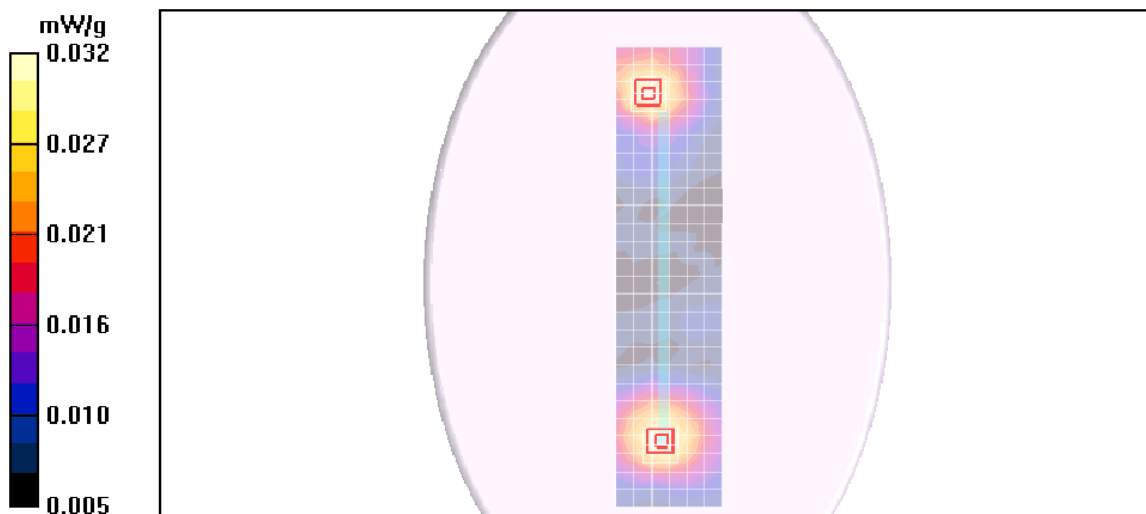
Reference Value = 4.20 V/m; Power Drift = -0.044 dB

Peak SAR (extrapolated) = 0.046 W/kg

SAR(1 g) = 0.029 mW/g; SAR(10 g) = 0.019 mW/g

[Info: Interpolated medium parameters used for SAR evaluation.](#)

Maximum value of SAR (measured) = 0.033 mW/g



SAR Plot for Antenna Horizontal Up - 802.11b Mode

Date/Time: 7/25/2010 9:32:47 PM

Test Laboratory: Compliance Certification Services

Antenna Horizontal Up

DUT: Atheros; Type: NA; Serial: NA

Communication System: 802.11bg; Frequency: 2462 MHz; Duty Cycle: 1:1
Medium parameters used (interpolated): $f = 2462$ MHz; $\sigma = 1.94$ mho/m; $\epsilon_r = 52.9$; $\rho = 1000$ kg/m³
Phantom section: Flat Section

Room Ambient Temperature: 24.0 deg. C; Liquid Temperature: 23.0 deg. C

DASY4 Configuration:

- Area Scan setting - Find Secondary Maximum Within: 2.0 dB and with a peak SAR value greater than 0.0012W/kg
- Probe: EX3DV3 - SN3531; ConvF(7.58, 7.58, 7.58); Calibrated: 2/23/2010
- Sensor-Surface: 3mm (Mechanical Surface Detection)
- Electronics: DAE3 Sn500; Calibrated: 9/15/2009
- Phantom: Flat Phantom ELI4.0; Type: QDOVA001BA; Serial: SN:1003
- Measurement SW: DASY4, V4.7 Build 80; Postprocessing SW: SEMCAD, V1.8 Build 186

802.11b H-ch Mian&Aux Ant/Area Scan (6x13x1):

Measurement grid: dx=15mm, dy=15mm
[Info: Interpolated medium parameters used for SAR evaluation.](#)

Maximum value of SAR (measured) = 0.379 mW/g

802.11b H-ch Mian&Aux Ant/Zoom Scan (Main) (7x7x9)/Cube 0:

Measurement grid: dx=5mm, dy=5mm, dz=3mm
Reference Value = 14.0 V/m; Power Drift = 0.177 dB

Peak SAR (extrapolated) = 0.526 W/kg

SAR(1 g) = 0.280 mW/g; SAR(10 g) = 0.142 mW/g

[Info: Interpolated medium parameters used for SAR evaluation.](#)

Maximum value of SAR (measured) = 0.354 mW/g

802.11b H-ch Mian&Aux Ant/Zoom Scan (Aux) (7x7x9)/Cube 0:

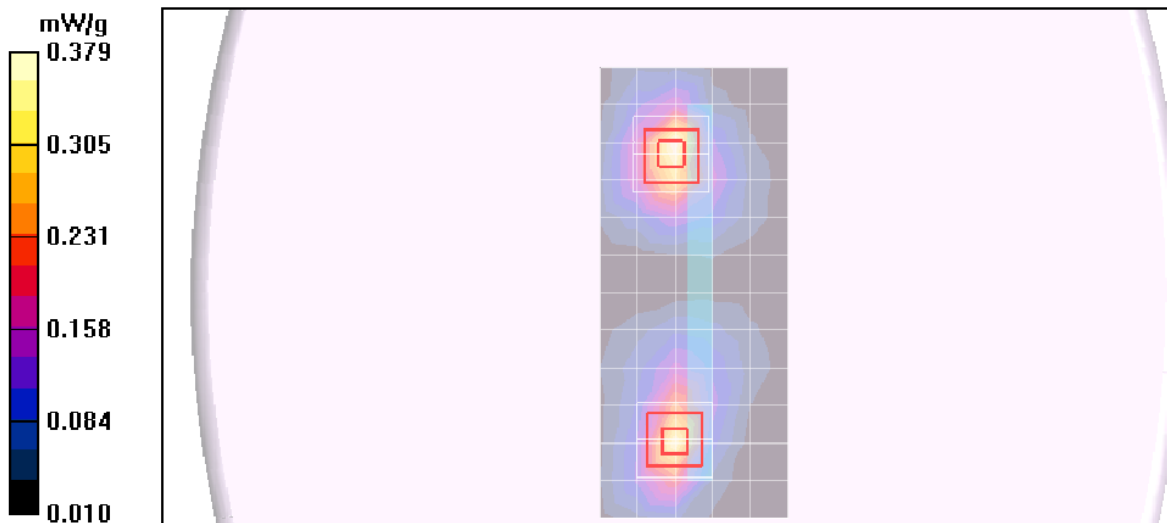
Measurement grid: dx=5mm, dy=5mm, dz=3mm
Reference Value = 14.0 V/m; Power Drift = 0.177 dB

Peak SAR (extrapolated) = 0.600 W/kg

SAR(1 g) = 0.322 mW/g; SAR(10 g) = 0.168 mW/g

[Info: Interpolated medium parameters used for SAR evaluation.](#)

Maximum value of SAR (measured) = 0.408 mW/g



SAR Plot for Antenna Horizontal Up - 802.11g mode

Date/Time: 7/25/2010 8:26:23 PM

Test Laboratory: Compliance Certification Services

Antenna Horizontal Up

DUT: Atheros; Type: NA; Serial: NA

Communication System: 802.11bg; Frequency: 2437 MHz; Duty Cycle: 1:1
Medium parameters used (interpolated): $f = 2437$ MHz; $\sigma = 1.92$ mho/m; $\epsilon_r = 53.1$; $\rho = 1000$ kg/m³
Phantom section: Flat Section

Room Ambient Temperature: 24.0 deg. C; Liquid Temperature: 23.0 deg. C

DASY4 Configuration:

- Area Scan setting - Find Secondary Maximum Within: 2.0 dB and with a peak SAR value greater than 0.0012W/kg
- Probe: EX3DV3 - SN3531; ConvF(7.58, 7.58, 7.58); Calibrated: 2/23/2010
- Sensor-Surface: 3mm (Mechanical Surface Detection)
- Electronics: DAE3 Sn500; Calibrated: 9/15/2009
- Phantom: Flat Phantom ELI4.0; Type: QDOVA001BA; Serial: SN:1003
- Measurement SW: DASY4, V4.7 Build 80; Postprocessing SW: SEMCAD, V1.8 Build 186

802.11g M-ch Mian&Aux Ant/Area Scan (6x13x1): Measurement grid: dx=15mm, dy=15mm

[Info: Interpolated medium parameters used for SAR evaluation.](#)

Maximum value of SAR (measured) = 0.567 mW/g

802.11g M-ch Mian&Aux Ant/Zoom Scan (Main) (7x7x9)/Cube 0: Measurement grid: dx=5mm, dy=5mm, dz=3mm

Reference Value = 17.2 V/m; Power Drift = 0.094 dB

Peak SAR (extrapolated) = 0.751 W/kg

SAR(1 g) = 0.401 mW/g; SAR(10 g) = 0.205 mW/g

[Info: Interpolated medium parameters used for SAR evaluation.](#)

Maximum value of SAR (measured) = 0.505 mW/g

802.11g M-ch Mian&Aux Ant/Zoom Scan (Aux) (7x7x9)/Cube 0: Measurement grid: dx=5mm, dy=5mm, dz=3mm

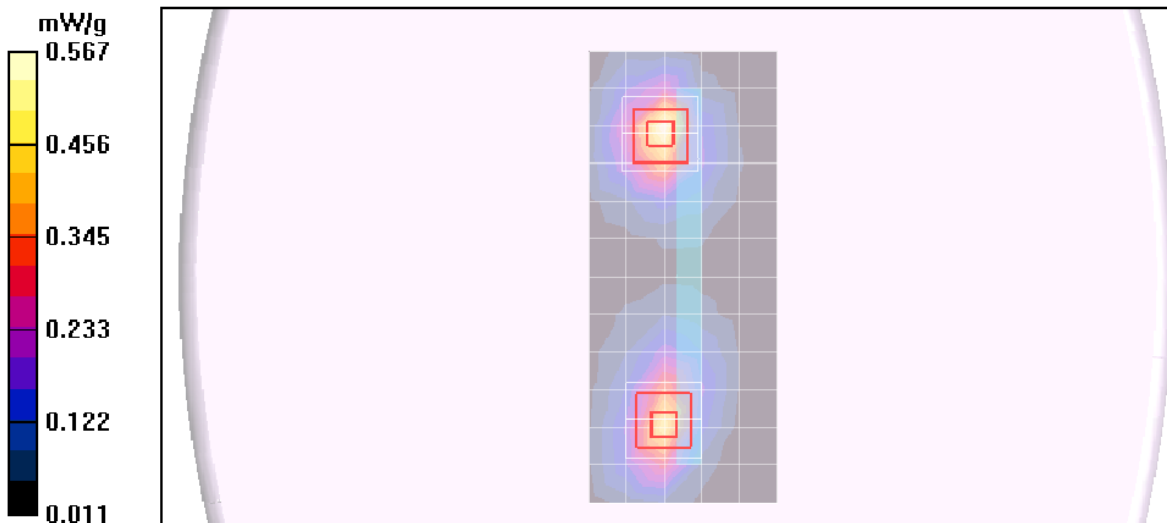
Reference Value = 17.2 V/m; Power Drift = 0.094 dB

Peak SAR (extrapolated) = 0.862 W/kg

SAR(1 g) = 0.463 mW/g; SAR(10 g) = 0.236 mW/g

[Info: Interpolated medium parameters used for SAR evaluation.](#)

Maximum value of SAR (measured) = 0.589 mW/g



SAR Plot for Antenna Horizontal Down - 802.11b Mode

Date/Time: 7/25/2010 6:53:28 PM

Test Laboratory: Compliance Certification Services

Antenna Horizontal Down

DUT: Atheros; Type: NA; Serial: NA

Communication System: 802.11bg; Frequency: 2462 MHz; Duty Cycle: 1:1
Medium parameters used (interpolated): $f = 2462$ MHz; $\sigma = 1.94$ mho/m; $\epsilon_r = 52.9$; $\rho = 1000$ kg/m³
Phantom section: Flat Section

Room Ambient Temperature: 24.0 deg. C; Liquid Temperature: 23.0 deg. C

DASY4 Configuration:

- Area Scan setting - Find Secondary Maximum Within: 2.0 dB and with a peak SAR value greater than 0.0012W/kg
- Probe: EX3DV3 - SN3531; ConvF(7.58, 7.58, 7.58); Calibrated: 2/23/2010
- Sensor-Surface: 3mm (Mechanical Surface Detection)
- Electronics: DAE3 Sn500; Calibrated: 9/15/2009
- Phantom: Flat Phantom ELI4.0; Type: QDOVA001BA; Serial: SN:1003
- Measurement SW: DASY4, V4.7 Build 80; Postprocessing SW: SEMCAD, V1.8 Build 186

802.11b H-ch Mian&Aux Ant/Area Scan (6x13x1): Measurement grid: dx=15mm, dy=15mm

[Info: Interpolated medium parameters used for SAR evaluation.](#)

Maximum value of SAR (measured) = 0.346 mW/g

802.11b H-ch Mian&Aux Ant/Zoom Scan (Main) (7x7x9)/Cube 0: Measurement grid: dx=5mm, dy=5mm, dz=3mm

Reference Value = 13.4 V/m; Power Drift = -0.079 dB

Peak SAR (extrapolated) = 0.588 W/kg

SAR(1 g) = 0.271 mW/g; SAR(10 g) = 0.136 mW/g

[Info: Interpolated medium parameters used for SAR evaluation.](#)

Maximum value of SAR (measured) = 0.350 mW/g

802.11b H-ch Mian&Aux Ant/Zoom Scan (Aux) (7x7x9)/Cube 0: Measurement grid: dx=5mm, dy=5mm, dz=3mm

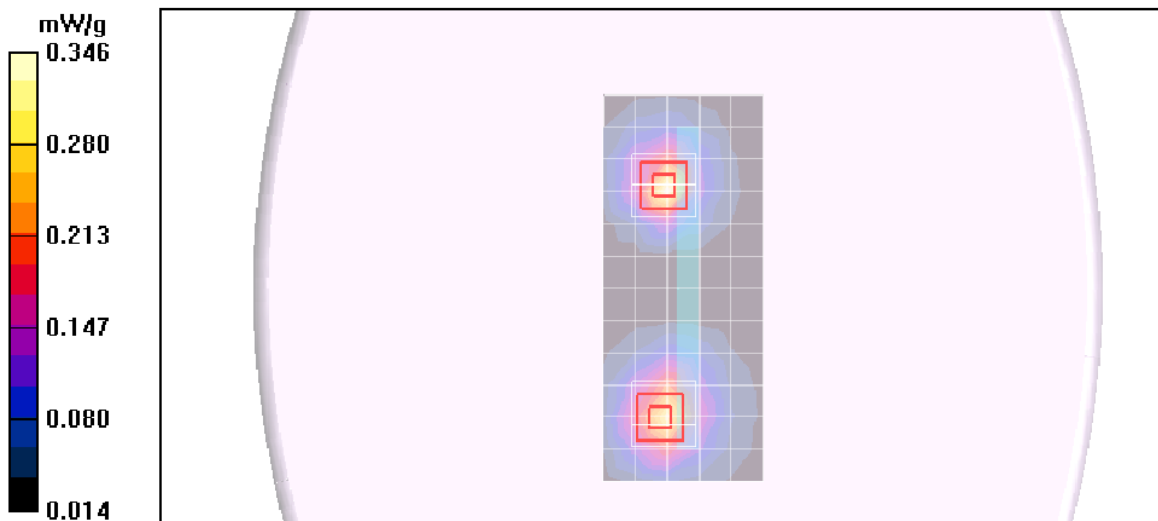
Reference Value = 13.4 V/m; Power Drift = -0.079 dB

Peak SAR (extrapolated) = 0.502 W/kg

SAR(1 g) = 0.266 mW/g; SAR(10 g) = 0.139 mW/g

[Info: Interpolated medium parameters used for SAR evaluation.](#)

Maximum value of SAR (measured) = 0.330 mW/g



SAR Plot for Antenna Horizontal Down - 802.11g Mode

Date/Time: 7/25/2010 7:35:27 PM

Test Laboratory: Compliance Certification Services

Antenna Horizontal Down

DUT: Atheros; Type: NA; Serial: NA

Communication System: 802.11bg; Frequency: 2437 MHz; Duty Cycle: 1:1
Medium parameters used (interpolated): $f = 2437$ MHz; $\sigma = 1.92$ mho/m; $\epsilon_r = 53.1$; $\rho = 1000$ kg/m³
Phantom section: Flat Section

Room Ambient Temperature: 24.0 deg. C; Liquid Temperature: 23.0 deg. C

DASY4 Configuration:

- Area Scan setting - Find Secondary Maximum Within: 2.0 dB and with a peak SAR value greater than 0.0012W/kg
- Probe: EX3DV3 - SN3531; ConvF(7.58, 7.58, 7.58); Calibrated: 2/23/2010
- Sensor-Surface: 3mm (Mechanical Surface Detection)
- Electronics: DAE3 Sn500; Calibrated: 9/15/2009
- Phantom: Flat Phantom ELI4.0; Type: QDOVA001BA; Serial: SN:1003
- Measurement SW: DASY4, V4.7 Build 80; Postprocessing SW: SEMCAD, V1.8 Build 186

802.11g M-ch Mian&Aux Ant/Area Scan (6x13x1): Measurement grid: dx=15mm, dy=15mm

[Info: Interpolated medium parameters used for SAR evaluation.](#)

Maximum value of SAR (measured) = 0.460 mW/g

802.11g M-ch Mian&Aux Ant/Zoom Scan (Main) (7x7x9)/Cube 0: Measurement grid: dx=5mm, dy=5mm, dz=3mm

Reference Value = 15.3 V/m; Power Drift = 0.004 dB

Peak SAR (extrapolated) = 0.475 W/kg

SAR(1 g) = 0.238 mW/g; SAR(10 g) = 0.127 mW/g

[Info: Interpolated medium parameters used for SAR evaluation.](#)

Maximum value of SAR (measured) = 0.294 mW/g

802.11g M-ch Mian&Aux Ant/Zoom Scan (Aux) (7x7x9)/Cube 0: Measurement grid: dx=5mm, dy=5mm, dz=3mm

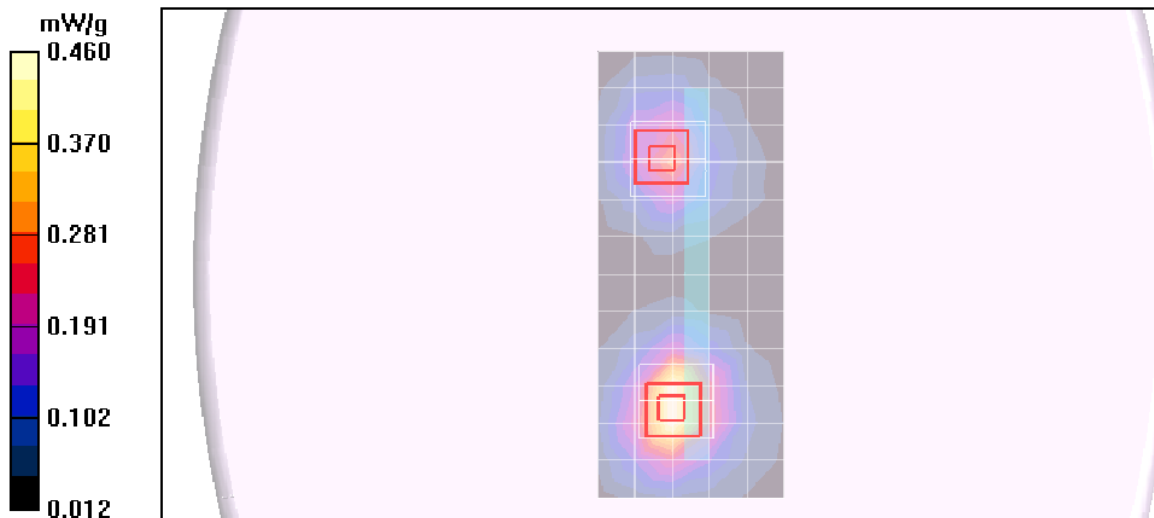
Reference Value = 15.3 V/m; Power Drift = 0.004 dB

Peak SAR (extrapolated) = 0.753 W/kg

SAR(1 g) = 0.379 mW/g; SAR(10 g) = 0.202 mW/g

[Info: Interpolated medium parameters used for SAR evaluation.](#)

Maximum value of SAR (measured) = 0.472 mW/g



14. ATTACHMENTS

| <u>No.</u> | <u>Contents</u> | <u>No. of page (s)</u> |
|------------|--|------------------------|
| 1 | Certificate of E-Field Probe - EX3DV3 SN 3531 | 11 |
| 2 | Certificate of System Validation Dipole - D2450 SN:706 | 9 |
| 3 | Dipole return loss measurement | 1 |
| 4 | Dipole Impedance measurement | 1 |

END OF REPORT