



ANSI/IEEE Std. C95.1-1992

**in accordance with the requirements of
FCC Report and Order: ET Docket 93-62, and OET Bulletin 65 Supplement C**



FCC TEST REPORT

For

802.11n-BT Combo Card

Trade Name: Atheros

Model: AR5B195

Issued to

**Qualcomm Atheros, Inc.
1700 Technology Dr San Jose California United States 95110**

Issued by

**Compliance Certification Services Inc.
No. 11, Wugong 6th Rd., Wugu Industrial Park,
Taipei Hsien 248, Taiwan.**

<http://www.ccsrf.com>

service@ccsrf.com

Issued Date: February 16 , 2012



Note: This report shall not be reproduced except in full, without the written approval of Compliance Certification Services Inc. This document may be altered or revised by Compliance Certification Services Inc. personnel only, and shall be noted in the revision section of the document.



Revision History

Rev.	Issue Date	Revisions	Effect Page	Revised By
00	February 16, 2012	Initial Issue	ALL	Peach Chang



TABLE OF CONTENTS

1.	CERTIFICATE OF COMPLIANCE (SAR EVALUATION)	4
2.	EUT DESCRIPTION	5
3.	REQUIREMENTS FOR COMPLIANCE TESTING DEFINED	6
3.1	REQUIREMENTS FOR COMPLIANCE TESTING DEFINED BY THE FCC	6
4.	DOSIMETRIC ASSESSMENT SYSTEM	6
4.1	MEASUREMENT SYSTEM DIAGRAM	7
4.2	SYSTEM COMPONENTS	8
5.	EVALUATION PROCEDURES	11
6.	MEASUREMENT UNCERTAINTY	15
7.	EXPOSURE LIMIT	17
8.	TYPICAL COMPOSITION OF INGREDIENTS FOR LIQUID TISSUE PHANTOMS ..	18
9.	MEASUREMENT RESULTS	19
9.1	TEST LIQUID CONFIRMATION.....	19
9.2	SYSTEM PERFORMANCE CHECK	21
9.3	EUT TUNE-UP PROCEDURES AND TEST MODE.....	23
9.4	SAR MEASUREMENTS RESULTS	25
10.	EQUIPMENT LIST & CALIBRATION STATUS	26
11.	FACILITIES	27
12.	REFERENCES	27
13.	ATTACHMENTS	28



1. CERTIFICATE OF COMPLIANCE (SAR EVALUATION)

Applicant: Qualcomm Atheros, Inc.
 1700 Technology Dr San Jose California United States 95110

Equipment Under Test: 802.11n-BT Combo Card

Trade Name: Atheros

Model Number: AR5B195

Date of Test: February 15, 2012

Device Category: PORTABLE DEVICES

Exposure Category: GENERAL POPULATION/UNCONTROLLED EXPOSURE

APPLICABLE STANDARDS	
STANDARD	
FCC	FCC OET 65 Supplement C
Deviation from Applicable Standard	
None	
TEST RESULT	
No non-compliance noted	
<p>The device was tested by Compliance Certification Services Inc. in accordance with the measurement methods and procedures specified in OET Bulletin 65 Supplement C (Edition 01-01). The test results in this report apply only to the tested sample of the stated device/equipment. Other similar device/equipment will not necessarily produce the same results due to production tolerance and measurement uncertainties.</p>	

Approved by:

Tested by:

Jason Lin
 Section Manager
 Compliance Certification Services Inc.

Anson Lu
 Test Engineer
 Compliance Certification Services Inc.



2. EUT DESCRIPTION

Product	802.11n-BT Combo Card
Trade Name	Atheros
Host Model Number	IdeaPad Y480xxxx;20131xxxx;2093xxxx(x can be 0-9, a-z, A-Z, “- “or blank)
Host Model(Test)	20131
Model Discrepancy	N/A
WLAN Module Trade Name	Atheros
WLAN Module Model Number	AR5B195
Frequency Range	802.11b: 2412 ~ 2462 MHz 802.11g: 2412 ~ 2462 MHz 802.11n HT20: 2412 ~ 2462 MHz 802.11n HT40: 2422 ~ 2452 MHz Bluetooth: 2402 ~2480 MHz
Max. O/P Power: (Average)	802.11b: 17.72 dBm 802.11g: 16.29 dBm 802.11n HT20: 15.45 dBm 802.11n HT40: 14.239 dBm Bluetooth(GFSK): 0.85 dBm Bluetooth(8DPSK): -0.51 dBm
Max. SAR (1g):	802.11b: 0.772 W/kg 802.11g: <i>Covered by the worst case 802.11b mode Legacy testing</i> 802.11n HT20: <i>Covered by the worst case 802.11b mode Legacy testing</i> 802.11n HT40: <i>Covered by the worst case 802.11b mode Legacy testing</i> Bluetooth: <i>SAR test is not required, please refer to page 24.</i>
Modulation Technique	802.11b: Direct Sequence Spread Spectrum (DSSS) 802.11g: Orthogonal Frequency Division Multiplexing (OFDM) GFSK for 1Mbps; $\pi/4$ -DQPSK for 2Mbps; 8DPSK for 3Mbps
Antenna Specification	Antenna type: WLAN antenna: PIFA antenna Bluetooth antenna: PIFA antenna

Remark: The sample selected for test was prototype that approximated to production product and was provided by manufacturer.



3. REQUIREMENTS FOR COMPLIANCE TESTING DEFINED

3.1 REQUIREMENTS FOR COMPLIANCE TESTING DEFINED BY THE FCC

The US Federal Communications Commission has released the report and order "Guidelines for Evaluating the Environmental Effects of RF Radiation", ET Docket No. 93-62 in August 1996 [1]. The order requires routine SAR evaluation prior to equipment authorization of portable transmitter devices, including portable telephones. For consumer products, the applicable limit is 1.6 mW/g for an uncontrolled environment and 8.0 mW/g for an occupational/controlled environment as recommended by the ANSI/IEEE standard C95.1-1992 [6]. According to the Supplement C of OET Bulletin 65 "Evaluating Compliance with FCC Guide-lines for Human Exposure to Radio frequency Electromagnetic Fields", released on Jun 29, 2001 by the FCC, the device should be evaluated at maximum output power (radiated from the antenna) under "worst-case" conditions for normal or intended use, incorporating normal antenna operating positions, device peak performance frequencies and positions for maximum RF energy coupling.

4. DOSIMETRIC ASSESSMENT SYSTEM

These measurements were performed with the automated near-field scanning system DASY4/DAST5 from Schmid & Partner Engineering AG (SPEAG). The system is based on a high precision robot (working range greater than 0.9 m) which positions the probes with a positional repeatability of better than ± 0.02 mm. Special E- and H-field probes have been developed for measurements close to material discontinuity, the sensors of which are directly loaded with a Schottky diode and connected via highly resistive lines to the data acquisition unit. The SAR measurements were conducted with the dosimetric probe EX3DV4-SN: 3554 (manufactured by SPEAG), designed in the classical triangular configuration and optimized for dosimetric evaluation. The probe has been calibrated according to the procedure with accuracy of better than $\pm 10\%$. The spherical isotropy was evaluated with the procedure and found to be better than ± 0.25 dB. The phantom used was the SAM Twin Phantom as described in FCC supplement C, IEEE P1528 and EN50361.



4.2 SYSTEM COMPONENTS

DASY4/DASY5 Measurement Server



The DASY4/DASY5 measurement server is based on a PC/104 CPU board with a 166MHz low-power Pentium, 32MB chip disk and 64MB RAM. The necessary circuits for communication with either the DAE3 electronic box as well as the 16-bit AD-converter system for optical detection and digital I/O interface are contained on the DASY4/DASY5 I/O-board, which is directly connected to the PC/104 bus of the CPU board.

The measurement server performs all real-time data evaluation for field measurements and surface detection, controls robot movements and handles safety operation.



The PC-operating system cannot interfere with these time critical processes. All connections are supervised by a watchdog, and disconnection of any of the cables to the measurement server will automatically disarm the robot and disable all program-controlled robot movements. Furthermore, the measurement server is equipped with two expansion slots which are reserved for future applications. Please note that the expansion slots do not have a standardized pinout and therefore only the expansion cards provided by SPEAG can be inserted. Expansion cards from any other supplier could seriously damage the measurement server. Calibration: No calibration required.

Data Acquisition Electronics (DAE)

The data acquisition electronics (DAE3) consists of a highly sensitive electrometer grade preamplifier with auto-zeroing, a channel and gain-switching multiplexer, a fast 16 bit AD converter and a command decoder and control logic unit. Transmission to the measurement server is accomplished through an optical downlink for data and status information as well as an optical uplink for commands and the clock. The mechanical probe mounting device includes two different sensor systems for frontal and sideways probe contacts. They are used for mechanical surface detection and probe collision detection. The input impedance of the DAE3 box is 200M Ω ; the inputs are symmetrical and floating. Common mode rejection is above 80 dB.



EX3DV4 Isotropic E-Field Probe for Dosimetric Measurements

- Construction:** Symmetrical design with triangular core
Built-in shielding against static charges
PEEK enclosure material (resistant to organic solvents, e.g., DGBE)
- Calibration:** Basic Broad Band Calibration in air: 10-3000 MHz.
Conversion Factors (CF) for HSL 900 and HSL 1800
CF-Calibration for other liquids and frequencies upon request.
- Frequency:** 10 MHz to > 6 GHz; Linearity: ± 0.2 dB (30 MHz to 3 GHz)
- Directivity:** ± 0.3 dB in HSL (rotation around probe axis)
 ± 0.5 dB in HSL (rotation normal to probe axis)
- Dynamic Range:** 10 μ W/g to > 100 mW/g; Linearity: ± 0.2 dB
(noise: typically < 1 μ W/g)





- Dimensions:** Overall length: 330 mm (Tip: 20 mm)
Tip diameter: 2.5 mm (Body: 12 mm)
Distance from probe tip to dipole centers: 1 mm
- Application:** High precision dosimetric measurements in any exposure scenario (e.g., very strong gradient fields). Only probe which enables compliance testing for frequencies up to 6 GHz with precision of better 30%.



Interior of probe

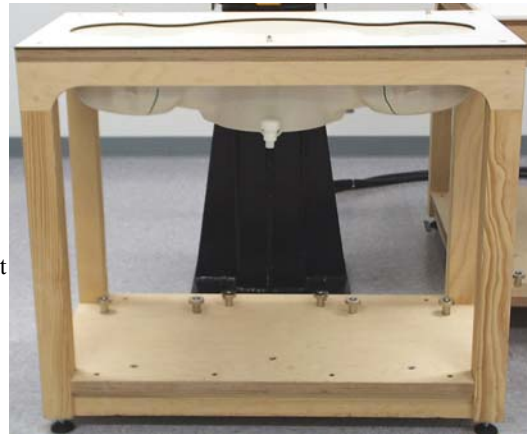
SAM Phantom (V4.0)

Construction: The shell corresponds to the specifications of the Specific Anthropomorphic Mannequin (SAM) phantom defined in IEEE 1528-200X, CENELEC 50361 and IEC 62209. It enables the dosimetric evaluation of left and right hand phone usage as well as body mounted usage at the flat phantom region. A cover prevents evaporation of the liquid. Reference markings on the phantom allow the complete setup of all predefined phantom positions and measurement grids by manually teaching three points with the robot.

Shell Thickness: 2 ± 0.2 mm

Filling Volume: Approx. 25 liters

Dimensions: Height: 810mm; Length: 1000mm; Width: 500mm



SAM Phantom (ELI4)

Description

Construction: Phantom for compliance testing of handheld and body-mounted wireless devices in the frequency range of 30 MHz to 6 GHz. ELI4 is fully compatible with the latest draft of the standard IEC 62209 Part II and all known tissue simulating liquids. ELI4 has been optimized regarding its performance and can be integrated into our standard phantom tables. A cover prevents evaporation of the liquid. Reference markings on the phantom allow installation of the complete setup, including all predefined phantom positions and measurement grids, by teaching three points. The phantom is supported by software version DASY4/DASY5.5 and higher and is compatible with all SPEAG dosimetric probes and dipoles

Shell Thickness: 2.0 ± 0.2 mm (sagging: <1%)

Filling Volume: Approx. 25 liters

Dimensions: Major ellipse axis: 600 mm
Minor axis: 400 mm 500mm





Device Holder for SAM Twin Phantom

Construction: In combination with the Twin SAM Phantom V4.0 or Twin SAM, the Mounting Device (made from POM) enables the rotation of the mounted transmitter in spherical coordinates, whereby the rotation point is the ear opening. The devices can be easily and accurately positioned according to IEC, IEEE, CENELEC, FCC or other specifications. The device holder can be locked at different phantom locations (left head, right head, and flat phantom).



System Validation Kits for SAM Phantom (V4.0)

Construction: Symmetrical dipole with 1/4 balun Enables measurement of feedpoint impedance with NWA Matched for use near flat phantoms filled with brain simulating solutions Includes distance holder and tripod adaptor.

Frequency: 450, 900, 1800, 2450, 5800 MHz

Return loss: > 20 dB at specified validation position

Power capability: > 100 W ($f < 1\text{GHz}$); > 40 W ($f > 1\text{GHz}$)

Dimensions: D450V2: dipole length: 270 mm; overall height: 330 mm
D835V2: dipole length: 161 mm; overall height: 340 mm
D900V2: dipole length: 148.5 mm; overall height: 340 mm
D1800V2: dipole length: 72.5 mm; overall height: 300 mm
D1900V2: dipole length: 67.7 mm; overall height: 300 mm
D1900V3: dipole length: 67.0 mm; overall height: 300 mm
D2450V2: dipole length: 51.5 mm; overall height: 290 mm
D5GHzV2: dipole length: 20.6 mm; overall height: 300 mm



System Validation Kits for ELI4 phantom

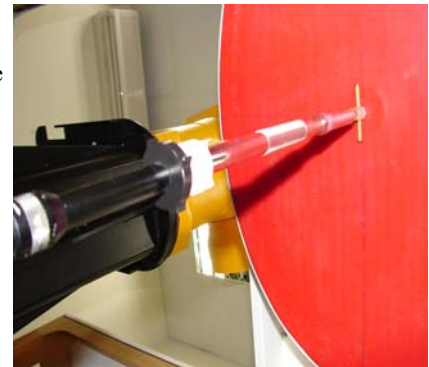
Construction: Symmetrical dipole with 1/4 balun Enables measurement of feedpoint impedance with NWA Matched for use near flat phantoms filled with brain simulating solutions Includes distance holder and tripod adaptor.

Frequency: 450, 900, 1800, 2450, 5800 MHz

Return loss: > 20 dB at specified validation position

Power capability: > 100 W ($f < 1\text{GHz}$); > 40 W ($f > 1\text{GHz}$)

Dimensions: D450V2: dipole length: 270 mm; overall height: 330 mm
D835V2: dipole length: 161 mm; overall height: 340 mm
D900V2: dipole length: 148.5 mm; overall height: 340 mm
D1800V2: dipole length: 72.5 mm; overall height: 300 mm
D1900V2: dipole length: 67.7 mm; overall height: 300 mm
D1900V3: dipole length: 67.0 mm; overall height: 300 mm
D2450V2: dipole length: 51.5 mm; overall height: 290 mm
D5GHzV2: dipole length: 20.6 mm; overall height: 300 mm





5. EVALUATION PROCEDURES

DATA EVALUATION

The DASY4/DAST5 post processing software (SEMCAD) automatically executes the following procedures to calculate the field units from the microvolt readings at the probe connector. The parameters used in the evaluation are stored in the configuration modules of the software:

Probe parameters:	- Sensitivity	$Norm_i, a_{i0}, a_{i1}, a_{i2}$
	- Conversion factor	$ConvF_i$
	- Diode compression point	dcp_i
Device parameters:	- Frequency	f
	- Crest factor	cf
	Media parameters:	- Conductivity
	- Density	ρ

These parameters must be set correctly in the software. They can be found in the component documents or be imported into the software from the configuration files issued for the DASY components. In the direct measuring mode of the multi-meter option, the parameters of the actual system setup are used. In the scan visualization and export modes, the parameters stored in the corresponding document files are used.

The first step of the evaluation is a linearization of the filtered input signal to account for the compression characteristics of the detector diode. The compensation depends on the input signal, the diode type and the DC-transmission factor from the diode to the evaluation electronics. If the exciting field is pulsed, the crest factor of the signal must be known to correctly compensate for peak power. The formula for each channel can be given as:

$$V_i = U_i + U_i^2 \cdot \frac{cf}{dcp_i}$$

with	V_i	= Compensated signal of channel i	(i = x, y, z)
	U_i	= Input signal of channel i	(i = x, y, z)
	cf	= Crest factor of exciting field	(DASY parameter)
	dcp_i	= Diode compression point	(DASY parameter)

From the compensated input signals the primary field data for each channel can be evaluated:

$$\text{E-field probes: } E_i = \sqrt{\frac{V_i}{Norm_i \cdot ConvF}}$$

$$\text{H-field probes: } H_i = \sqrt{V_i} \cdot \frac{a_{i10} + a_{i11}f + a_{i12}f^2}{f}$$

with	V_i	= Compensated signal of channel i	(i = x, y, z)
	$Norm_i$	= Sensor sensitivity of channel i	(i = x, y, z)
		$\mu\text{V}/(\text{V/m})^2$ for E0field Probes	
	$ConvF$	= Sensitivity enhancement in solution	
	a_{ij}	= Sensor sensitivity factors for H-field probes	
	f	= Carrier frequency (GHz)	
	E_i	= Electric field strength of channel i in V/m	
	H_i	= Magnetic field strength of channel i in A/m	



The RSS value of the field components gives the total field strength (Hermitian magnitude):

$$E_{tot} = \sqrt{E_x^2 + E_y^2 + E_z^2}$$

The primary field data are used to calculate the derived field units.

$$SAR = E_{tot}^2 \cdot \frac{\sigma}{\rho \cdot 1000}$$

- with SAR = local specific absorption rate in mW/g
 E_{tot} = total field strength in V/m
 σ = conductivity in [mho/m] or [Siemens/m]
 ρ = equivalent tissue density in g/cm³

Note that the density is normally set to 1 (or 1.06), to account for actual brain density rather than the density of the simulation liquid.

The power flow density is calculated assuming the excitation field as a free space field.

$$P_{pwe} = \frac{E_{tot}^2}{3770} \quad \text{or} \quad P_{pwe} = H_{tot}^2 \cdot 37.7$$

- with P_{pwe} = Equivalent power density of a plane wave in mW/cm²
 E_{tot} = total electric field strength in V/m
 H_{tot} = total magnetic field strength in A/m



SAR MEASUREMENT PROCEDURES

The procedure for assessing the peak spatial-average SAR value consists of the following steps:

- **Power Reference Measurement**

The reference and drift jobs are useful jobs for monitoring the power drift of the device under test in the batch process. Both jobs measure the field at a specified reference position, at a selectable distance from the phantom surface. The reference position can be either the selected section's grid reference point or a user point in this section. The reference job projects the selected point onto the phantom surface, orients the probe perpendicularly to the surface, and approaches the surface using the selected detection method.

- **Area Scan**

The area scan is used as a fast scan in two dimensions to find the area of high field values, before doing a finer measurement around the hot spot. The sophisticated interpolation routines implemented in DASY4/DAST5 software can find the maximum locations even in relatively coarse grids. The scan area is defined by an editable grid. This grid is anchored at the grid reference point of the selected section in the phantom. When the area scan's property sheet is brought-up, grid was at to **15 mm by 15 mm** and can be edited by a user.

- **Zoom Scan**

Zoom scans are used to assess the peak spatial SAR values within a cubic averaging volume containing 1 g and 10 g of simulated tissue. The default zoom scan measures 7x7x9 points within a cube whose base faces are centered around the maximum found in a preceding area scan job within the same procedure. If the preceding Area Scan job indicates more than one maximum, the number of Zoom Scans has to be enlarged accordingly (The default number inserted is 1).

- **Power Drift measurement**

The drift job measures the field at the same location as the most recent reference job within the same procedure, and with the same settings. The drift measurement gives the field difference in dB from the reading conducted within the last reference measurement. Several drift measurements are possible for one reference measurement. This allows a user to monitor the power drift of the device under test within a batch process. In the properties of the Drift job, the user can specify a limit for the drift and have DASY4/DAST5 software stop the measurements if this limit is exceeded.

- **Z-Scan**

The Z Scan job measures points along a vertical straight line. The line runs along the Z-axis of a one-dimensional grid. A user can anchor the grid to the current probe location. As with any other grids, the local Z-axis of the anchor location establishes the Z-axis of the grid.



SPATIAL PEAK SAR EVALUATION

The procedure for spatial peak SAR evaluation has been implemented according to the IEEE1529 standard. It can be conducted for 1 g and 10 g.

The DASY4/DAST5 system allows evaluations that combine measured data and robot positions, such as:

- maximum search
- extrapolation
- boundary correction
- peak search for averaged SAR

During a maximum search, global and local maximum searches are automatically performed in 2-D after each Area Scan measurement with at least 6 measurement points. It is based on the evaluation of the local SAR gradient calculated by the Quadratic Shepard's method. The algorithm will find the global maximum and all local maxima within -2 dB of the global maxima for all SAR distributions.

Extrapolation

Extrapolation routines are used to obtain SAR values between the lowest measurement points and the inner phantom surface. The extrapolation distance is determined by the surface detection distance and the probe sensor offset. Several measurements at different distances are necessary for the extrapolation.

Extrapolation routines require at least 10 measurement points in 3-D space. They are used in the Cube Scan to obtain SAR values between the lowest measurement points and the inner phantom surface. The routine uses the modified Quadratic Shepard's method for extrapolation. For a grid using 7x7x9 measurement points with 5mm resolution amounting to 441 measurement points, the uncertainty of the extrapolation routines is less than 1% for 1 g and 10 g cubes.

Boundary effect

For measurements in the immediate vicinity of a phantom surface, the field coupling effects between the probe and the boundary influence the probe characteristics. Boundary effect errors of different dosimetric probe types have been analyzed by measurements and using a numerical probe model. As expected, both methods showed an enhanced sensitivity in the immediate vicinity of the boundary. The effect strongly depends on the probe dimensions and disappears with increasing distance from the boundary. The sensitivity can be approximately given as:

$$S \approx S_o + S_b \exp\left(-\frac{z}{a}\right) \cos\left(\pi \frac{z}{\lambda}\right)$$

Since the decay of the boundary effect dominates for small probes ($a \ll \lambda$), the cos-term can be omitted. Factors S_b (parameter Alpha in the DASY4/DAST5 software) and a (parameter Delta in the DASY4/DAST5 software) are assessed during probe calibration and used for numerical compensation of the boundary effect. Several simulations and measurements have confirmed that the compensation is valid for different field and boundary configurations.

This simple compensation procedure can largely reduce the probe uncertainty near boundaries. It works well as long as:

- the boundary curvature is small
- the probe axis is angled less than 30° to the boundary normal
- the distance between probe and boundary is larger than 25% of the probe diameter
- the probe is symmetric (all sensors have the same offset from the probe tip)

Since all of these requirements are fulfilled in a DASY4/DAST5 system, the correction of the probe boundary effect in the vicinity of the phantom surface is performed in a fully automated manner via the measurement data extraction during postprocessing.



6. MEASUREMENT UNCERTAINTY

DASY4:

UNCERTAINTY BUDGE ACCORDING TO IEEE P1528						
Error Description	Uncertainty Value $\pm\%$	Probability distribution	Divisor	C_1 1g	Standard unc.(1g/10g) $\pm\%$	V_1 or V_{eff}
Measurement System						
Probe calibration	± 4.8	normal	1	1	± 4.8	∞
Axial isotropy of probe	± 4.6	rectangular	$\sqrt{3}$	$(1-C_p)^{1/2}$	± 1.9	∞
Sph. Isotropy of probe	± 9.7	rectangular	$\sqrt{3}$	$(C_p)^{1/2}$	± 3.9	∞
Probe linearity	± 4.5	rectangular	$\sqrt{3}$	1	± 2.7	∞
Detection Limit	± 0.9	rectangular	$\sqrt{3}$	1	± 0.6	∞
Boundary effects	± 8.5	rectangular	$\sqrt{3}$	1	± 4.8	∞
Readoutelectronics	± 1.0	normal	1	1	± 1.0	∞
Response time	± 0.9	rectangular	$\sqrt{3}$	1	± 0.5	∞
Integration time	± 1.2	rectangular	$\sqrt{3}$	1	± 0.8	∞
Mech Constrains of robot	± 0.5	rectangular	$\sqrt{3}$	1	± 0.2	∞
Probe positioning	± 2.7	rectangular	$\sqrt{3}$	1	± 1.7	∞
Extrap. And integration	± 4.0	rectangular	$\sqrt{3}$	1	± 2.3	∞
RF ambient conditiona	± 0.54	rectangular	$\sqrt{3}$	1	± 0.43	∞
Test Sample Related						
Device positioning	± 2.2	normal	1	1	± 2.23	11
Device holder uncertainty	± 5	normal	1	1	± 5.0	7
Power drift	± 5	rectangular	$\sqrt{3}$	1	± 2.9	∞
Phantom and Set up						
Phantom uncertainty	± 4	rectangular	$\sqrt{3}$	1	± 2.3	∞
Liquid conductivity	± 5	rectangular	$\sqrt{3}$	0.6	± 1.7	∞
Liquid conductivity	± 5	rectangular	$\sqrt{3}$	0.6	$\pm 3.5/1.7$	∞
Liquid permittivity	± 5	rectangular	$\sqrt{3}$	0.6	± 1.7	∞
Liquid permittivity	± 5	rectangular	$\sqrt{3}$	0.6	± 1.7	∞
Combined Standard Uncertainty						
					$\pm 12.14/11.76$	
Coverage Factor for 95%						
		$k_p=2$				
Expanded Standard Uncertainty						
					$\pm 24.29/23.51$	

Table: Worst-case uncertainty for DASY4 assessed according to IEEE P1528.

The budge is valid for the frequency range 300 MHz to 3G Hz and represents a worst-case analysis.



Dasy5:

UNCERTAINTY BUDGE ACCORDING TO IEEE P1528						
Error Description	Uncertainty Value ±%	Probability distribution	Divisor	C ₁ 1g	Standard unc.(1g/10g) ±%	V ₁ or V _{eff}
Measurement System						
Probe calibration	±5.9	normal	1	1	±5.9	∞
Axial isotropy of probe	±4.7	rectangular	√3	(1-Cp) ^{1/2}	±1.9	∞
Sph. Isotropy of probe	±9.6	rectangular	√3	(Cp) ^{1/2}	±3.9	∞
Probe linearity	±4.7	rectangular	√3	1	±2.7	∞
Detection Limit	±1.0	rectangular	√3	1	±0.6	∞
Boundary effects	±1.0	rectangular	√3	1	±0.6	∞
Readoutelectronics	±0.3	normal	1	1	±0.3	∞
Response time	±0.8	rectangular	√3	1	±0.5	∞
Integration time	±2.6	rectangular	√3	1	±1.5	∞
Probe positioning	±0.4	rectangular	√3	1	±0.2	∞
Extrap. And integration	±4.0	rectangular	√3	1	±2.3	∞
RF ambient conditiona	±3.0	rectangular	√3	1	±1.7	∞
RF ambient conditiona	±3.0	rectangular	√3	1	±1.7	∞
Test Sample Related						
Device positioning	±2.9	normal	1	1	±2.9	145
Device holder uncertainty	±3.6	normal	1	1	±3.6	5
Power drift	±5.0	rectangular	√3	1	±2.9	∞
Phantom and Set up						
Phantom uncertainty	±4.0	rectangular	√3	1	±2.3	∞
Liquid conductivity	±5.0	rectangular	√3	0.6	±1.8/1.2	∞
Liquid conductivity	±1.5	rectangular	√3	0.6	±0.6	∞
Liquid permittivity	±5.0	rectangular	√3	0.6	±1.7/1.4	∞
Liquid permittivity	±1.0	rectangular	√3	0.6	±0.4	∞
Combined Standard Uncertainty					±10.375/±10.112	
Coverage Factor for 95%		kp=2				
Expanded Standard Uncertainty					±20.75/±19.23	

Table: Worst-case uncertainty for DASY5 assessed according to IEEE P1528.

The budge is valid for the frequency range 300 MHz to 3G Hz and represents a worst-case analysis.



7. EXPOSURE LIMIT

(A). Limits for Occupational/Controlled Exposure (W/kg)

<u>Whole-Body</u>	<u>Partial-Body</u>	<u>Hands, Wrists, Feet and Ankles</u>
0.4	8.0	2.0

(B). Limits for General Population/Uncontrolled Exposure (W/kg)

<u>Whole-Body</u>	<u>Partial-Body</u>	<u>Hands, Wrists, Feet and Ankles</u>
0.08	1.6	4.0

NOTE: **Whole-Body SAR** is averaged over the entire body, **partial-body SAR** is averaged over any 1 gram of tissue defined as a tissue volume in the shape of a cube. **SAR for hands, wrists, feet and ankles** is averaged over any 10 grams of tissue defined as a tissue volume in the shape of a cube.

Population/Uncontrolled Environments:

are defined as locations where there is the exposure of individuals who have no knowledge or control of their exposure.

Occupational/Controlled Environments:

are defined as locations where there is exposure that may be incurred by people who are aware of the potential for exposure, (i.e. as a result of employment or occupation).

NOTE
GENERAL POPULATION/UNCONTROLLED EXPOSURE
PARTIAL BODY LIMIT
1.6 W/kg



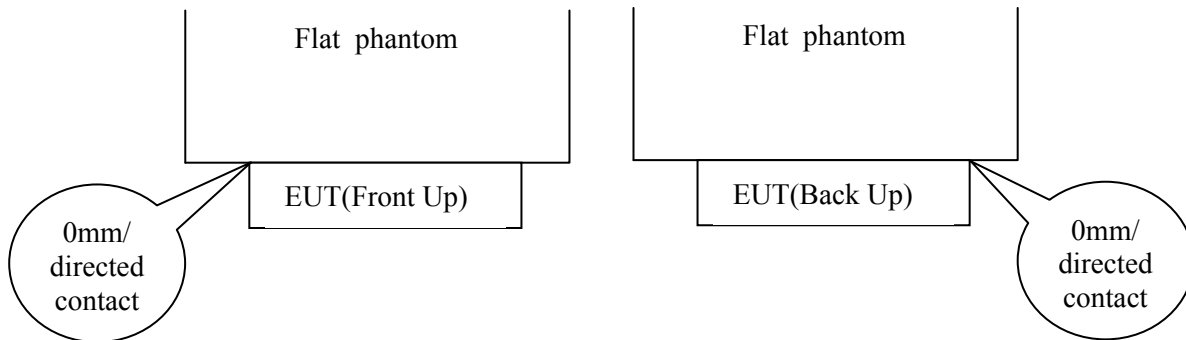
8. TYPICAL COMPOSITION OF INGREDIENTS FOR LIQUID TISSUE PHANTOMS

The following tissue formulations are provided for reference only as some of the parameters have not been thoroughly verified. The composition of ingredients may be modified accordingly to achieve the desired target tissue parameters required for routine SAR evaluation.

Ingredients (% by weight)	Frequency (MHz)									
	450		835		915		1900		2450	
Tissue Type	Head	Body	Head	Body	Head	Body	Head	Body	Head	Body
Water	38.56	51.16	41.45	52.4	41.05	56.0	54.9	40.4	62.7	73.2
Salt (NaCl)	3.95	1.49	1.45	1.4	1.35	0.76	0.18	0.5	0.5	0.04
Sugar	56.32	46.78	56.0	45.0	56.5	41.76	0.0	58.0	0.0	0.0
HEC	0.98	0.52	1.0	1.0	1.0	1.21	0.0	1.0	0.0	0.0
Bactericide	0.19	0.05	0.1	0.1	0.1	0.27	0.0	0.1	0.0	0.0
Triton X-100	0.0	0.0	0.0	0.0	0.0	0.0	0.0	0.0	36.8	0.0
DGBE	0.0	0.0	0.0	0.0	0.0	0.0	44.92	0.0	0.0	26.7
Dielectric Constant	43.42	58.0	42.54	56.1	42.0	56.8	39.9	54.0	39.8	52.5
Conductivity (S/m)	0.85	0.83	0.91	0.95	1.0	1.07	1.42	1.45	1.88	1.78

Salt: 99+% Pure Sodium Chloride Sugar: 98+% Pure Sucrose
 Water: De-ionized, 16 MΩ⁺ resistivity HEC: Hydroxyethyl Cellulose
 DGBE: 99+% Di(ethylene glycol) butyl ether, [2-(2-butoxyethoxy)ethanol]
 Triton X-100 (ultra pure): Polyethylene glycol mono [4-(1, 1, 3, 3-tetramethylbutyl)phenyl]ether

The Device is not supplied with any specific body-worn accessories, the devices is tested at a 0cm(0mm, directed contact to phantom) to demonstrate body-worn accessory SAR compliance. The setup Figure as below:





9. MEASUREMENT RESULTS

9.1 TEST LIQUID CONFIRMATION

SIMULATING LIQUIDS PARAMETER CHECK

The simulating liquids should be checked at the beginning of a series of SAR measurements to determine if the dielectric parameters are within the tolerances of the specified target values

The relative permittivity and conductivity of the tissue material should be within $\pm 5\%$ of the values given in the table below. 5% may not be easily achieved at certain frequencies. Under such circumstances, 10% tolerance may be used until more precise tissue recipes are available

IEEE SCC-34/SC-2 P1528 RECOMMENDED TISSUE DIELECTRIC PARAMETERS

The head tissue dielectric parameters recommended by the IEEE SCC-34/SC-2 in P1528 have been incorporated in the following table. These head parameters are derived from planar layer models simulating the highest expected SAR for the dielectric properties and tissue thickness variations in a human head. Other head and body tissue parameters that have not been specified in P1528 are derived from the tissue dielectric parameters computed from the 4-Cole-Cole equations and extrapolated according to the head parameters specified in P1528

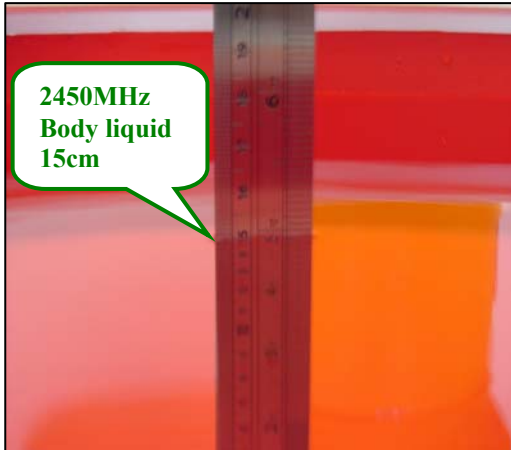
Target Frequency (MHz)	Head		Body	
	ϵ_r	σ (S/m)	ϵ_r	σ (S/m)
150	52.3	0.76	61.9	0.80
300	45.3	0.87	58.2	0.92
450	43.5	0.87	56.7	0.94
835	41.5	0.90	55.2	0.97
900	41.5	0.97	55.0	1.05
915	41.5	0.98	55.0	1.06
1450	40.5	1.20	54.0	1.30
1610	40.3	1.29	53.8	1.40
1800-2000	40.0	1.40	53.3	1.52
2450	39.2	1.80	52.7	1.95
3000	38.5	2.40	52.0	2.73
5800	35.3	5.27	48.2	6.00



SIMULATING LIQUIDS PARAMETER CHECK RESULTS

Date: February 15, 2012 **Ambient condition:** Temperature 24.2°C; Relative humidity: 53%

Body Simulating Liquid			Parameters	Target	Measured	Deviation[%]	Limited[%]
f (MHz)	Temp. [°C]	Depth (cm)					
2412.00	23.20	15.00	Permittivity:	52.80	51.59	-2.29	± 5
			Conductivity:	1.91	1.88	-1.78	± 5
2437.00	23.20	15.00	Permittivity:	52.70	51.54	-2.20	± 5
			Conductivity:	1.94	1.92	-0.93	± 5
2450.00	23.20	15.00	Permittivity:	52.70	53.69	1.88	± 5
			Conductivity:	1.95	1.97	1.08	± 5
2462.00	23.20	15.00	Permittivity:	52.70	51.58	-2.13	± 5
			Conductivity:	1.97	1.96	-0.76	± 5





9.2 SYSTEM PERFORMANCE CHECK

The system performance check is performed prior to any usage of the system in order to guarantee reproducible results. The system performance check verifies that the system operates within its specifications. The system performance check results are tabulated below. And also the corresponding SAR plot is attached as well in the SAR plots files.

SYSTEM PERFORMANCE CHECK MEASUREMENT CONDITIONS

- The measurements were performed in the flat section of the SAM twin phantom filled with Body simulating liquid of the following parameters.
- The DAST4 system with an E-field probe EX3DV4 SN:3554 was used for the measurements.
- The dipole was mounted on the small tripod so that the dipole feed point was positioned below the center marking of the flat phantom section and the dipole was oriented parallel to the body axis (the long side of the phantom). The standard measuring distance was 15 mm (below 1 GHz) and 10 mm (above 1 GHz) from dipole center to the simulating liquid surface.
- The coarse grid with a grid spacing of 10mm was aligned with the dipole.
- Special 7x7x7 fine cube was chosen for cube integration (dx= 5 mm, dy= 5 mm, dz= 5 mm).
- Distance between probe sensors and phantom surface was set to 2.5 mm.
- The dipole input power (forward power) was 250 mW±3%.
- The results are normalized to 1 W input power.

Reference SAR values

The reference SAR values were using measurement results indicated in the dipole calibration document (see table below)

Frequency (MHz)	1g SAR	10g SAR	Local SAR at Surface (Above Feed Point)	Local SAR at Surface (y = 2cm offset from feed point)
900	10.3	6.57	16.4	5.4
1800	38.2	20.3	69.5	6.8
2450(Body)	51.2	24	128.8	N/A



SYSTEM PERFORMANCE CHECK RESULTS

Dipole: D2450V2 SN: 728

Date: February 15, 2012 **Ambient condition:** Temperature 24.2°C; Relative humidity: 53%

Body Simulating Liquid			Parameters	Target	Measured	Deviation[%]	Limited[%]
f(MHz)	Temp. [°C]	Depth [cm]					
2450.00	23.20	15.00	Permittivity:	52.70	53.69	1.88	± 5
			Conductivity:	1.95	1.97	1.08	± 5
			1g SAR:	51.20	52.80	3.12	± 5

ps. 1g SAR is equal 4x13.2(250mW forward power SAR value)

**9.3 EUT TUNE-UP PROCEDURES AND TEST MODE**

- Software used to control the EUT for staying in continuous transmitting mode was programmed.
- The output power setting is according to the original filing that the lower data rate is presented as worse case as they resulted in the highest output power.
- The output power(dBm) we measured before and after SAR test in different channel
- During SAR test, test maximum output power channel first.
- If the SAR measured on the highest output channel is < 50% of the SAR limit, SAR evaluation for the other required channels is unnecessary.
- This module is a WLAN with BT combo card. Main antenna is designated for 802.11 b/g/n mode and as for aux antenna, it is the TX for 802.11n and Bluetooth. WLAN and Bluetooth cannot transmit simultaneously.

Output powers are measured as below:

802.11b / 802.11g Conducted Power (Avg)(dBm):

Mode Frequency	802.11b 1M before SAR test	802.11b 1M after SAR test	802.11g 6M before SAR test	802.11g 6M after SAR test
1(2412 MHz)	17.47	17.40	13.98	Covered by the worst case 802.11b mode Legacy testing.
6(2437 MHz)	17.72	17.66	16.29	
11(2462 MHz)	16.88	16.81	13.13	

Ps. 802.11b maximum output power 17.72dBm(59.16mW) is higher than 24.62mW(60/f), so 802.11b SAR test is required.

802.11n HT20 Conducted Power (Avg)(dBm):

Mode Frequency	802.11n HT20 6.5M before SAR test	802.11n HT20 6.5M after SAR test
1(2412 MHz)	12.13	Covered by the worst case 802.11b mode Legacy testing.
6(2437 MHz)	15.45	
11(2462 MHz)	12.41	

802.11n HT40 Conducted Power (Avg)(dBm):

Mode Frequency	802.11n HT40 13.5M before SAR test	802.11n HT40 13.5M after SAR test
3(2422 MHz)	11.43	Covered by the worst case 802.11b mode Legacy testing.
6(2437 MHz)	14.23	
9(2452 MHz)	11.87	

PS. KDB 248227 - SAR is not required for 802.11g /HT20/HT40 channels when the maximum average output power is less than 1/4 dB higher than that measured on the corresponding 802.11b channels.



Bluetooth Conducted Power (Avg)(dBm):

Mode Frequency	1M GFSK	3M 8DPSK
2402 MHz	-0.55	-1.68
2441 MHz	0.23	-1.15
2480 MHz	0.85	-0.51

Ps. Bluetooth maximum output power 0.85 dBm(1.2mW) is less than 24.580mW(60/f), so Bluetooth SAR test is not required.

And the antenna-to-antenna distance is 25.6cm which is >5cm , and Bluetooth and WLAN cannot transmit simultaneously; therefore, co-location SAR is not required per KDB616217.



9.4 SAR MEASUREMENTS RESULTS

Body position:

Test mode: 802.11b , Duty Cycle: 100%, Rate= 1M, Crest Factor: 1					Depth of liquid: 15.0 cm	
EUT Position	Antenna	Frequency		Liquid Temp_°C	SAR (1g) (W/kg)	Limit (W/kg)
		Channel	MHz			
Bottom Flat	main	6	2437	23.2	0.772	1.6

Notes: 1) Please refer to attachment for the result presentation in plot format.



10. EQUIPMENT LIST & CALIBRATION STATUS

Name of Equipment	Manufacturer	Type/Model	Serial Number	Calibration Cycle(days)	Calibration Due
S-Parameter Network Analyzer	Agilent	E8358A	US40260243	365	07/04/2012
Electronic Probe kit	Hewlett Packard	85070D	N/A	N/A	N/A
Amplifier	Mini-Circuit	ZVE-8G	665500309	N/A	N/A
Amplifier	Mini-Circuit	ZHL-1724HLN	D072602#2	N/A	N/A
DC Power generator	ABM	8301HD	N/A	N/A	N/A
Attenuator	Mini-Circuit	BW-S20W5	N/A	N/A	N/A
Directional Coupler	Agilent	778D	MY48220487	N/A	N/A
Thermometer	Amarell	4046	25060	3650	10/02/2014
Signal Generator	Agilent	83630B	3844A01022	365	08/01/2012
Spectrum Analyzer	Agilent	E4446A	US42510252	365	11/04/2012
Power Meter	Anritsu	ML2495A	1012009	365	03/27/2012
Power Sensor	Anritsu	MA2411B	0917072	365	03/08/2012
Data Acquisition Electronics (DAE)	SPEAG	DAE4	877	365	03/17/2012
Data Acquisition Electronics (DAE)	SPEAG	DAE4	558	365	07/25/2012
Dosimetric E-Field Probe	SPEAG	EX3DV4	3665	365	04/18/2012
Dosimetric E-Field Probe	SPEAG	EX3DV4	3554	365	09/28/2012
2450 MHz System Validation Dipole	SPEAG	D2450V2	728	365	11/21/2012
Probe Alignment Unit	SPEAG	LB (V2)	348	N/A	N/A
Robot	Staubli	TX60L	F08/5A6GA1/ A/01	N/A	N/A
SAM Twin Phantom V4.0	SPEAG	N/A	N/A	N/A	N/A
Devices Holder	SPEAG	N/A	N/A	N/A	N/A
Head/ Muscle 2450 MHz	CCS	H/M 2450A	N/A	N/A	N/A



11. FACILITIES

All measurement facilities used to collect the measurement data are located at

- No. 81-1, Lane 210, Bade Rd. 2, Luchu Hsiang, Taoyuan Hsien, Taiwan, R.O.C.
- No.11, Wu-Gong 6th Rd., Wugu Industrial Park, New Taipei City 248, Taiwan (R.O.C.)
- No. 199, Chunghsen Road, Hsintien City, Taipei Hsien, Taiwan, R.O.C.

12. REFERENCES

- [1] Federal Communications Commission, \Report and order: Guidelines for evaluating the environ-mental effects of radiofrequency radiation", Tech. Rep. FCC 96-326, FCC, Washington, D.C. 20554, 1996.
- [2] David L. Means Kwok Chan, Robert F. Cleveland, \Evaluating compliance with FCC guidelines for human exposure to radiofrequency electromagnetic fields", Tech. Rep., Federal Communication Commission, O_ce of Engineering & Technology, Washington, DC, 1997.
- [3] Thomas Schmid, Oliver Egger, and Niels Kuster, \Automated E-_eld scanning system for dosimetric assessments", IEEE Transactions on Microwave Theory and Techniques, vol. 44, pp. 105{113, Jan. 1996.
- [4] Niels Kuster, Ralph K.astle, and Thomas Schmid, \Dosimetric evaluation of mobile communications equipment with known precision", IEICE Transactions on Communications, vol. E80-B, no. 5, pp. 645{652, May 1997.
- [5] CENELEC, \Considerations for evaluating of human exposure to electromagnetic fields (EMFs) from mobile telecommunication equipment (MTE) in the frequency range 30MHz - 6GHz", Tech. Rep., CENELEC, European Committee for Electrotechnical Standardization, Brussels, 1997.
- [6] ANSI, ANSI/IEEE C95.1-1992: IEEE Standard for Safety Levels with Respect to Human Exposure to Radio Frequency Electromagnetic Fields, 3 kHz to 300 GHz, The Institute of Electrical and Electronics Engineers, Inc., New York, NY 10017, 1992.
- [7] Katja Pokovic, Thomas Schmid, and Niels Kuster, \Robust setup for precise calibration of E-_eld probes in tissue simulating liquids at mobile communications frequencies", in ICECOM _97, Dubrovnik, October 15{17, 1997, pp. 120{124.
- [8] Katja Pokovic, Thomas Schmid, and Niels Kuster, \E-_eld probe with improved isotropy in brain simulating liquids", in Proceedings of the ELMAR, Zadar, Croatia, 23{25 June, 1996, pp. 172{175.
- [9] Volker Hombach, Klaus Meier, Michael Burkhardt, Eberhard K. uhn, and Niels Kuster, \The dependence of EM energy absorption upon human head modeling at 900 MHz", IEEE Transactions onMicrowave Theory and Techniques, vol. 44, no. 10, pp. 1865{1873, Oct. 1996.
- [10] Klaus Meier, Ralf Kastle, Volker Hombach, Roger Tay, and Niels Kuster, \The dependence of EM energy absorption upon human head modeling at 1800 MHz", IEEE Transactions on Microwave Theory and Techniques, Oct. 1997, in press.
- [11] W. Gander, Computermathematik, Birkhaeuser, Basel, 1992.
- [12] W. H. Press, S. A. Teukolsky, W. T. Vetterling, and B. P. Flannery, Numerical Receptions in C, The Art of Scientific Computing, Second Edition, Cambridge University Press, 1992..Dosimetric Evaluation of Sample device, month 1998 9
- [13] NIS81 NAMAS, \The treatment of uncertainty in EMC measurement", Tech. Rep., NAMAS Executive, National Physical Laboratory, Teddington, Middlesex, England, 1994.
- [14] Barry N. Taylor and Christ E. Kuyatt, \Guidelines for evaluating and expressing the uncertainty of NIST measurement results", Tech. Rep., National Institute of Standards and Technology, 1994. Dosimetric Evaluation of Sample device, month 1998 10



13. ATTACHMENTS

Exhibit	Content
1	System Performance Check Plots
2	SAR Test Plots
3	Probe_EX3DV4_sn3554_20110929c
4	Dipole_D2450v2_sn728_20111122c
5	Thermometer

END OF REPORT