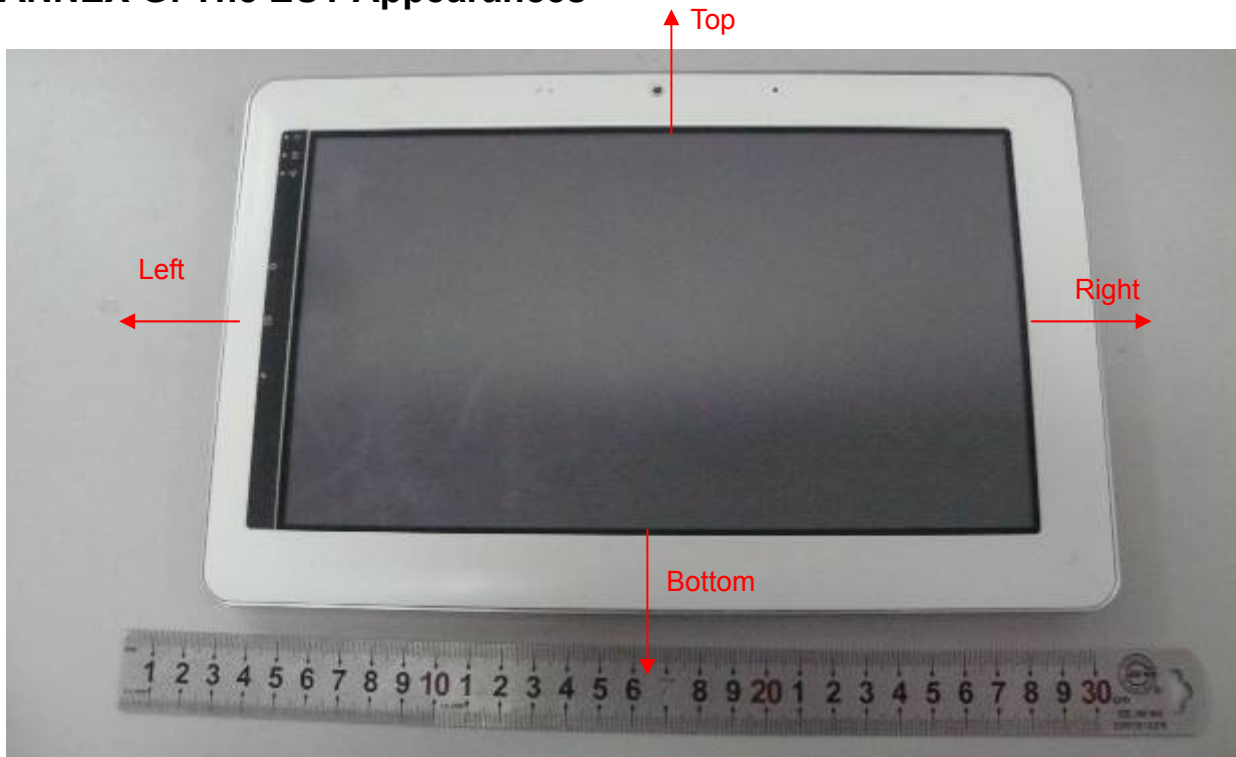
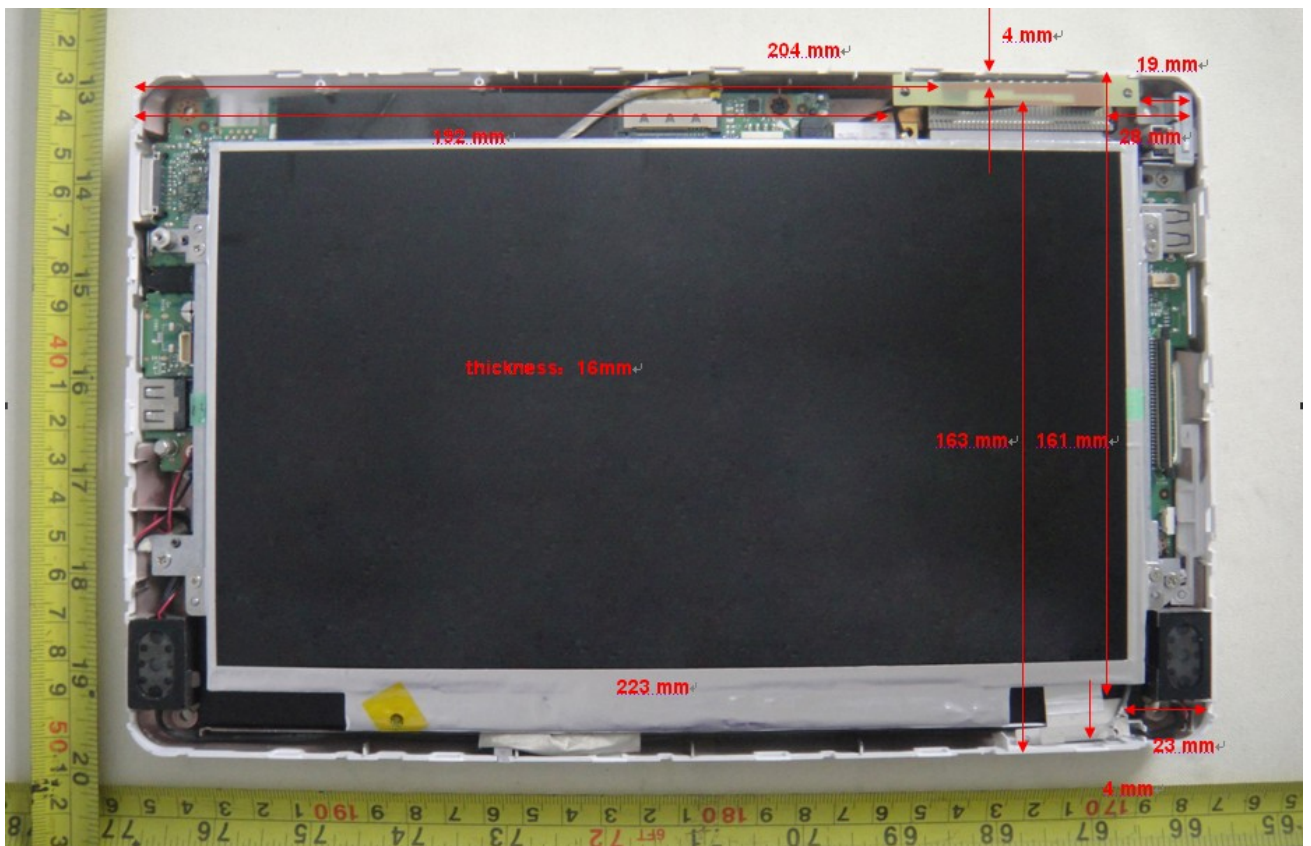


ANNEX G: The EUT Appearances



3-a: Exterior of Front side



3-b: Interior of Front side

Picture 3: Constituents of the EUT



Picture 4: Test position 1



Picture 5: Test position 2



Picture 6: Test position 3

(This is not the most conservative antenna - to - user distance at edge mode. According to KDB 447498 4) ii) (2) –SAR is required only the edge with the most conservative exposure conditions, No SAR)



Picture 7: Test position 4

TA Technology (Shanghai) Co., Ltd.
Test Report

Report No. RZA1012-2020SAR01R3

Page 67 of 67



Picture 8: Test position 5

(This is not the most conservative antenna - to - user distance at edge mode. According to KDB 447498 4) ii) (2) –SAR is required only the edge with the most conservative exposure conditions, No SAR)