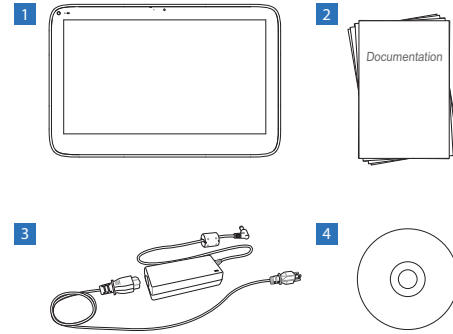


Quick Start Guide

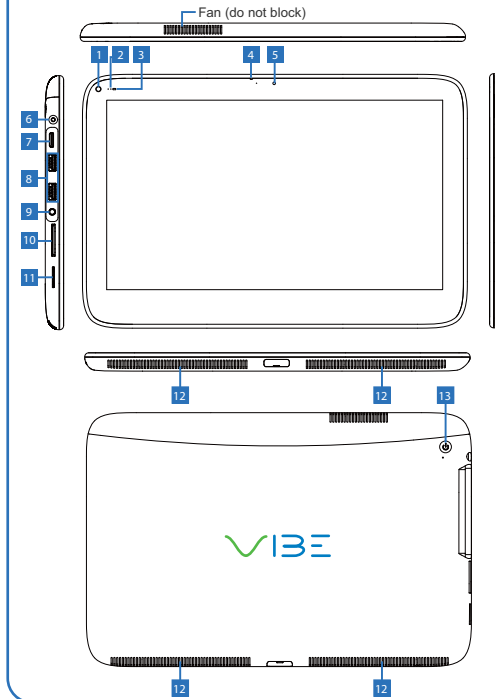


Package List



- 1 VIBE Slate PC
- 2 Quick Start Guide
- 3 Power Adapter
- 4 Support Disc

Exploring the VIBE



Exploring the VIBE

- | | |
|-----------------------------|---|
| 1 Touch hotkey ¹ | 8 USB 2.0 ports |
| 2 Status indicator | 9 Audio input and output for OMTP headset |
| 3 Light sensor ² | 10 SD card reader |
| 4 Microphone | 11 SIM card reader |
| 5 Webcam | 12 Stereo speakers |
| 6 DC input | 13 Power button |
| 7 Mini-HDMI | |

Status Indicator

LED Color	Turning On	Turning Off	Going to Sleep
Blue	Flash 3 times	Flash once	Flash 3 times

Power Button LED

LED Color	Powered On	Powered Off	Sleep Mode
Blue	On	Off	Blinking

¹The touch hotkey performs the following functions:

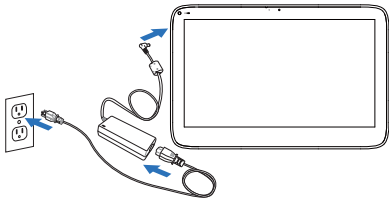
In Windows:

- Opens/Minimizes the Launcher

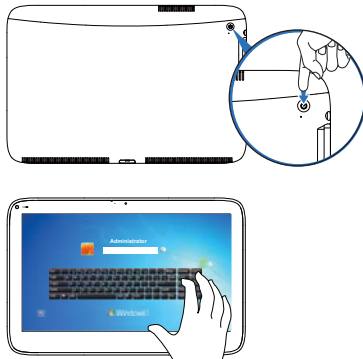
²The Light Sensor performs the following functions:

- Automatically adjusts the brightness of the screen based on ambient light.
- Allows the user to adjust the baseline light level.

Charging the VIBE



Starting up the VIBE



*Note: Windows login requires user setup and will vary by region.

Using the Touchscreen

Gesture	Windows Usage	Action	Diagram
Tapping	Click	Lightly tapping on an object in the screen performs the same function as a mouse click. A double tap is the same as a double click.	
Flicking	Default: Pan Up/Down/Left/Right	Flicking the screen in either an up, down, left, or right allows you to quickly navigate or scroll through various screens.	
Dragging	Mouse Drag	Holding your finger on an item on the screen while moving your finger around allows you to drag items to different locations on the screen. The same motion also allows you to slowly scroll through screens.	
Pinching	Zoom Out	Touching the screen with two fingers apart and pinching together allows for you to zoom out.	
Expanding	Zoom In	Touching the screen with two fingers close together and spreading them out allows for you to zoom in.	

Using the Touchscreen

Gesture	Windows Usage	Action	Diagram
Rotating	Rotation	Touching two points on an image and moving your fingers in a twisting motion allows you to rotate images.	
Press and Tap	Right-Click	Pressing the screen with one finger and then tapping with a second finger nearby brings up the right-click menu.	
Press and Hold	Right-Click	Pressing, holding, and releasing on the screen with a finger brings up the right-click menu.	

Taking Care of your VIBE

Keeping the VIBE Clean

Use a soft, lint-free cloth to clean the touchscreen. Avoid getting moisture in openings. Do not use aerosol, sprays, solvents, alcohol or abrasives to clean the device.

Using Connectors and Ports

Never force a connector into a port. Check for any obstructions on the port. Ensure that the connector matches the port and that you have positioned the connector correctly in relation to the port.

Glass Parts

The glass touchscreen could break if the device is dropped on a hard surface or suffers a substantial impact. Glass cracked due to abuse or misuse is not covered under warranty.

Handling the VIBE

Failure to follow the handling information could result in damage to the device.

Taking Care of your VIBE


Transporting the VIBE

This device contains sensitive components including a large glass touchscreen. Do not drop, knock or crush the device.

Battery

The battery is non-replaceable.

Disassembly

Attention: Do not remove any stickers on the device with the mark.  doing so will void the device's warranty.

FCC Notice

Notice (Information to user):

You are cautioned that changes or modifications not expressly approved by the party responsible for compliance could void your authority to operate the equipment.

Notice

This device complies with Part 15 of the FCC Rules. Operation is subject to the following two conditions: (1) this device may not cause harmful interference and (2) this device must accept any interference received, including interference that may cause undesired operation.

For P15B equipment

This equipment has been tested and found to comply with the limits for a Class B digital device, pursuant to part 15 of the FCC rules. These limits are designed to provide reasonable protection against harmful interference in a residential installation. This equipment generates, uses and can radiate radio frequency energy and, if not installed and used in accordance with the instructions, may cause harmful interference to radio communications. However, there is no guarantee that interference will not occur in a particular installation. If this equipment does cause harmful interference to radio or television reception, which can be determined by turning the equipment off and on, the user is encouraged to try to correct the interference by one or more of the following measures:

- Reorient or relocate the receiving antenna.
- Increase the separation between the equipment and receiver.
- Connect the equipment into an outlet on a circuit different from that to which the receiver is connected.
- Consult the dealer or an experienced radio/TV technician for help.

For portable devices

FCC RF Radiation Exposure Statement:

1. This Transmitter must not be co-located or operating in conjunction with any other antenna or transmitter.
2. This equipment complies with FCC RF radiation exposure limits set forth for an uncontrolled environment. This device was tested for typical hand held operations with the device contacted directly to the human body to the sides of the device. To maintain compliance with FCC RF exposure compliance requirements, avoid direct contact to the transmitting antenna during transmitting.