

CERTIFICATE OF COMPLIANCE **SAR EVALUATION**

Test Lab:

CELLTECH RESEARCH INC.
Testing and Engineering Lab
1955 Moss Court
Kelowna, B.C.
Canada V1Y 9L3
Phone: 250 - 860-3130
Fax: 250 - 860-3110
Toll Free: 1-877-545-6287
e-mail: celltech@globuswireless.com

Applicant Information:

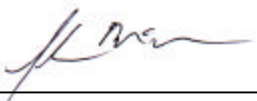
DESCARTES CORP.
6 Colonial Lake Drive, Suite K
Lawrenceville, NJ 08648
Attn: Mr. David Lesage
EVP, Sales & Marketing
Tel.: 609-530-9440
Fax: 609-530-9445

Model No.:	P2000 CDPD
Equipment Type:	Wireless CDPD Credit Card P.O.S. Terminal
Equipment Classification:	Licensed Non-Broadcast Station Transmitter (TNB)
Tx Frequency Range:	824-849 MHz
Rx Frequency Range:	869-894 MHz
Power Level Tested:	Max. Conducted Power
FCC Rule Part(s):	2.1093; ET Docket 96.326

This wireless portable device has been shown to be compliant for localized Specific Absorption Rate (SAR) for uncontrolled environment/general exposure limits specified in ANSI/IEEE Std. C95.1-1992 and had been tested in accordance with the measurement procedures specified in ANSI/IEEE Std. C95.3-1999.

I attest to the accuracy of data. All measurements were performed by me or were made under my supervision and are correct to the best of my knowledge and belief. I assume full responsibility for the completeness of these measurements and vouch for the qualifications of all persons taking them.

Celltech Research Inc. certifies that no party to this application has been denied FCC benefits pursuant to Section 5301 of the Anti-Drug Abuse Act of 1988, 21 U.S.C. 853(a).



Shawn McMillen
General Manager
Celltech Research Inc.



TABLE OF CONTENTS

1.0	INTRODUCTION.....	1
2.0	DESCRIPTION OF EUT.....	1
3.0	SAR MEASUREMENT SYSTEM	2
4.0	MEASUREMENT SUMMARY.....	3-4
5.0	SAR LIMITS.....	5
6.0	DETAILS OF SAR EVALUATION.....	5
7.0	EVALUATION PROCEDURES.....	6
8.0	SYSTEM VALIDATION.....	6
9.0	SIMULATED EQUIVALENT TISSUES.....	7
10.0	TISSUE PARAMETERS.....	7
11.0	SYSTEM SPECIFICATIONS.....	8
12.0	TEST EQUIPMENT LIST.....	9
13.0	MEASUREMENT UNCERTAINTIES.....	10
14.0	REFERENCES.....	11
	APPENDIX A - SAR MEASUREMENT DATA.....	12
	APPENDIX B - DIPOLE VALIDATION.....	13
	APPENDIX C - PROBE CALIBRATION.....	14
	APPENDIX D - SAR TEST SETUP PHOTOGRAPHS.....	15

1.0 INTRODUCTION

This measurement report shows compliance of the DESCARTES CORP. Model: P2000 CDPD Portable Handheld Credit Card P.O.S. Terminal with FCC Part 2.1093, ET Docket 96-326 Rules for mobile and portable devices. The test procedures, as described in American National Standards Institute C95.1-1992 (1), FCC OET Bulletin 65-1997 were employed. A description of the product and operating configuration, detailed summary of the test results, methodology and procedures used in the evaluation, equipment used, and the various provisions of the rules are included within this test report.

2.0 DESCRIPTION of Equipment Under Test (EUT)

EUT Type	Portable Handheld CDPD Credit Card P.O.S. Terminal	Equipment Class	Licensed Non-Broadcast Station Transmitter (TNB)
S/N No.	Pre-production	Model No.	P2000 CDPD
Tx Frequency Range (MHz)	824-849	RF Output Power Tested	Max. Conducted Power
Rx Frequency Range (MHz)	869-894	Signal Modulation(s)	FM
Power Supply	7.2V Nickel Metal Hybride Battery	Antenna Type	Stubby (Length: 30mm)



Front of EUT



Left Side



Right Side



Rear of EUT

3.0 SAR MEASUREMENT SYSTEM

Celltech Research SAR measurement facility utilizes the Dosimetric Assessment System (DASY™) manufactured by Schmid & Partner Engineering AG (SPEAG™) of Zurich, Switzerland. The DASY system is comprised of the robot controller, computer, near-field probe, probe alignment sensor, and the generic twin phantom containing brain or muscle equivalent material. The robot is a six-axis industrial robot performing precise movements to position the probe to the location (points) of maximum electromagnetic field (EMF). A cell controller system contains the power supply, robot controller, teach pendant (Joystick), and remote control, is used to drive the robot motors. The Staubli robot is connected to the cell controller to allow software manipulation of the robot. A data acquisition electronics (DAE) circuit performs the signal amplification, signal multiplexing, AD-conversion, offset measurements, mechanical surface detection, collision detection, etc. is connected to the Electro-optical coupler (EOC). The EOC performs the conversion from the optical into digital electric signal of the DAE and transfers data to the PC plug-in card. The DAE3 utilizes a highly sensitive electrometer-grade preamplifier with auto-zeroing, a channel and gain-switching multiplexer, a fast 16 bit AD-converter and a command decoder and control logic unit. Transmission to the PC-card is accomplished through an optical downlink for data and status information and an optical uplink for commands and clock lines. The mechanical probe-mounting device includes two different sensor systems for frontal and sidewise probe contacts. They are also used for mechanical surface detection and probe collision detection. The robot uses its own controller with a built in VME-bus computer.



DASY3 SAR Measurement System

4.0 MEASUREMENT SUMMARY

The measurement results were obtained with the EUT tested in the conditions described in this report. Detailed measurement data and plots showing the maximum SAR location of the EUT are reported in Appendix A.

Hand SAR Measurement Results

Freq. (MHz)	Channel	Mode Tested	RF Output Pwr. Tested	EUT Position	Phantom Section	Separation Distance (cm)	SAR (w/kg)
824.04	991	Unmod.	Max. Conducted	Antenna side	Flat	0.0	2.36
836.49	383	Unmod.	Max. Conducted	Antenna side	Flat	0.0	2.86
848.97	799	Unmod.	Max. Conducted	Antenna side	Flat	0.0	2.26
Mixture Type: Muscle Dielectric Constant: 56.1 Conductivity: 0.95			ANSI / IEEE C95.1 1992 - SAFETY LIMIT Spatial Peak Uncontrolled Exposure/General Population Hand SAR: 4.0 W/kg (averaged over 10 grams)				

Notes:

1. The SAR values found were below the maximum limit of 4.0 w/kg.
2. The highest hand SAR value found was 2.86 w/kg.



Hand SAR Setup - Antenna Side of EUT

Body SAR Measurement Results

Freq. (MHz)	Chan.	Mode Tested	RF Output Pwr. Tested	EUT Position	Phantom Section	Separation Distance (cm)	SAR (w/kg)	
							1 gram average	10 gram average
824.04	991	Unmod.	Max. Conducted	Antenna side	Flat	1.0	0.319	0.192
836.49	383	Unmod.	Max. Conducted	Antenna side	Flat	1.0	0.669	0.406
848.97	799	Unmod.	Max. Conducted	Antenna side	Flat	1.0	0.783	0.473
824.04	991	Unmod.	Max. Conducted	Antenna End	Flat	0.0	0.599	0.240
836.49	383	Unmod.	Max. Conducted	Antenna End	Flat	0.0	0.728	0.291
848.97	799	Unmod.	Max. Conducted	Antenna End	Flat	0.0	0.753	0.323
824.04	991	Unmod.	Max. Conducted	Bottom side	Flat	0.0	0.0775	0.0517
836.49	383	Unmod.	Max. Conducted	Bottom side	Flat	0.0	0.0971	0.0651
848.97	799	Unmod.	Max. Conducted	Bottom side	Flat	0.0	0.0993	0.0682
Mixture Type: Muscle Dielectric Constant: 56.1 Conductivity: 0.95			ANSI / IEEE C95.1 1992 - SAFETY LIMIT Spatial Peak Uncontrolled Exposure/General Population Body SAR: 1.6 W/kg (averaged over 1 gram) Hand SAR: 4.0 W/kg (averaged over 10 grams)					

Notes:

1. The SAR values found were below the maximum limit of 1.6w/kg (1g average) and 4.0 w/kg (10g average) for compliance with body and hand SAR requirements.
2. The highest body SAR value found was 0.783w/kg (1g average).



Antenna Side - 1.0cm spacing



Bottom Side of EUT



Antenna End of EUT

5.0 SAR SAFETY LIMITS

EXPOSURE LIMITS (General Population/Uncontrolled Exposure Environment)	SAR (W/Kg)
Spatial Average (averaged over the whole body)	0.08
Spatial Peak (averaged over any 1g of tissue)	1.60
Spatial Peak (hands/wrists/feet/ankles averaged over 10g)	4.00

Notes: 1. The FCC SAR safety limits specified in the table above apply to devices operated in the General Population / Uncontrolled Exposure environment.
2. Uncontrolled environments are defined as locations where there is exposure of individuals who have no knowledge or control of their exposure.

6.0 DETAILS OF SAR EVALUATION

The DESCARTES CORP. Model: P2000 Portable Handheld CDPD Credit Card P.O.S. Terminal was found to be compliant for localized Specific Absorption Rate (SAR) based on the following test provisions and conditions:

- 1) The EUT was tested for hand SAR with the antenna side of the device placed parallel to and touching the outer surface of the planar phantom.
- 2) The EUT was tested for body SAR with the antenna side of the device placed parallel to the outer surface of the planar phantom and with a 1.0 cm separation distance.
- 3) The EUT was tested for body SAR at the antenna end with the EUT positioned vertically, and the tip of the antenna touching the outer surface of the planar phantom.
- 4) The EUT was tested for body SAR with the bottom side of the device placed parallel to and touching the outer surface of the planar phantom.
- 5) The EUT was tested at the maximum conducted power level set by the manufacturer for the low, mid, and high channels.
- 6) The EUT was operated for an appropriate period prior to the evaluation in order to minimize drift.
- 7) The EUT was keyed to operate continuously in the transmit mode for the duration of the test.
- 8) The location of the maximum spatial SAR distribution (Hot Spot) was determined relative to the device and its antenna.
- 9) The EUT was tested with a fully charged battery.

7.0 EVALUATION PROCEDURES

The Specific Absorption Rate (SAR) evaluation was performed in the following manner:

- a. (i) The evaluation was performed in an applicable area of the phantom depending on the type of device being tested. For devices held to the ear during normal operation, both the left and right ear positions were evaluated at the center frequency of the band at maximum power. The side, which produced the greatest SAR, determined which side of the phantom would be used for the entire evaluation. FCC OET Bulletin 65 Supplement C dictated the positioning of the ear-held device relative to the phantom.
(ii) For face-held and body-worn devices, or devices which can be operated within 20cm of the body, the planar section of the phantom was used. The type of device being evaluated dictated the distance of the EUT to the outer surface of the planar phantom.
- b. The SAR was determined by a pre-defined procedure within the DASY3 software. Upon completion of a reference and optical surface check, the exposed region of the phantom was scanned near the inner surface with a grid spacing of 20mm x 20mm.
- c. A 5x5x7 matrix was performed around the greatest spatial SAR distribution found during the area scan of the applicable exposed region. SAR values were then calculated using a 3-D spline interpolation algorithm and averaged over spatial volumes of 1 and 10 grams.
- d. If the EUT had any appreciable drift over the course of the evaluation, then the EUT was re-evaluated. Any unusual anomalies over the course of the test also warranted a re-evaluation.

8.0 SYSTEM VALIDATION

Prior to the assessment, the system was verified in the planar region of the phantom. For devices operating below 1GHz, an 835MHz dipole or 900MHz was used, depending on the operating frequency of the EUT. For devices operating above 1GHz, an 1800MHz dipole was used. A forward power of 250mW was applied to the dipole and system was verified to a tolerance of $\pm 3\%$. Following the validation the fluid remained or was changed depending on the particular part of the body being evaluated. The applicable verification(s) is/are as follows (see Appendix B for validation test plot):

Dipole Validation Kit	Target SAR 1g (w/kg)	Measured SAR 1g (w/kg)
D835V2	2.06	2.05

9.0 SIMULATED TISSUES

The brain and muscle mixtures consist of a viscous gel using hydroxethylcellulose (HEC) gelling agent and saline solution. Preservation with a bactericide is added and visual inspection is made to ensure air bubbles are not trapped during the mixing process. The mixture is calibrated to obtain proper dielectric constant (permittivity) and conductivity of the tissue.

INGREDIENT	FREQUENCY - 835MHz	
	Brain (Validation) %	Muscle (%)
Water	40.1	52.4%
Sugar	58.1	45.0%
Salt	0.7	1.4%
HEC	1.0	1.0%
Bactericide	0.1	0.2%

10.0 TISSUE PARAMETERS

The dielectric parameters of the fluids were verified prior to the SAR evaluation using an 85070C Dielectric Probe Kit and an 8753E Network Analyzer. The dielectric parameters of the fluid are as follows:

Equivalent Tissue (835MHz)	Dielectric Constant ϵ_r	Conductivity σ (mho/m)	ρ (Kg/m ³)
Brain (Validation)	$44.2 \pm 5\%$	$0.80 \pm 10\%$	1000
Muscle	$56.1 \pm 5\%$	$0.95 \pm 10\%$	1000

11.0 ROBOT SYSTEM SPECIFICATIONS

Specifications

POSITIONER: Stäubli Unimation Corp. Robot Model: RX60L
Repeatability: 0.02 mm
No. of axis: 6

Data Acquisition Electronic (DAE) System

Cell Controller

Processor: Pentium III
Clock Speed: 450 MHz
Operating System: Windows NT
Data Card: DASY3 PC-Board

Data Converter

Features: Signal Amplifier, multiplexer, A/D converter, and control logic
Software: DASY3 software
Connecting Lines: Optical downlink for data and status info.
Optical uplink for commands and clock

PC Interface Card

Function: 24 bit (64 MHz) DSP for real time processing
Link to DAE3
16 bit A/D converter for surface detection system
serial link to robot
direct emergency stop output for robot

E-Field Probe

Model: ET3DV6
Serial No.: 1387
Construction: Triangular core fiber optic detection system
Frequency: 10 MHz to 6 GHz
Linearity: ± 0.2 dB (30 MHz to 3 GHz)

Phantom

Phantom: Generic Twin
Shell Material: Fiberglass
Thickness: 2.0 \pm 0.1 mm

12.0 TEST EQUIPMENT LIST

SAR MEASUREMENT SYSTEM		
<u>EQUIPMENT</u>	<u>S/N</u>	<u>CALIBRATION DATE</u>
DASY3 System -Robot -ET3DV6 E-Field Probe -DAE -835MHz Validation Dipole -900MHz Validation Dipole -1800MHz Validation Dipole -Generic Twin Phantom V3.0	599396-01 1387 383 411 054 247 N/A	N/A Sept 1999 Sept 1999 Aug 1999 Aug 1999 Aug 1999 N/A
85070C Dielectric Probe Kit	N/A	N/A
Gigatronics 8652A Power Meter -Power Sensor 80701A -Power Sensor 80701A	1835272 1833535 1833542	Oct 1999 Oct 1999 Oct 1999
E4408B Spectrum Analyzer	US39240170	Nov 1999
8594E Spectrum Analyzer	3543A02721	Mar 2000
8753E Network Analyzer	US38433013	Nov 1999
8648D Signal Generator	3847A00611	N/A
5S1G4 Amplifier Research Power Amplifier	26235	N/A

13.0 MEASUREMENT UNCERTAINTIES

Uncertainty Description	Error	Distribution	Weight	Standard Deviation	Offset
Probe Uncertainty					
Axial isotropy	± 0.2 dB	U-Shaped	0.5	± 2.4 %	
Spherical isotropy	± 0.4 dB	U-Shaped	0.5	± 4.8 %	
Isotropy from gradient	± 0.5 dB	U-Shaped	0	\pm	
Spatial resolution	± 0.5 %	Normal	1	± 0.5 %	
Linearity error	± 0.2 dB	Rectangle	1	± 2.7 %	
Calibration error	± 3.3 %	Normal	1	± 3.3 %	
SAR Evaluation Uncertainty					
Data acquisition error	± 1 %	Rectangle	1	± 0.6 %	
ELF and RF disturbances	± 0.25 %	Normal	1	± 0.25 %	
Conductivity assessment	± 10 %	Rectangle	1	± 5.8 %	
Spatial Peak SAR Evaluation Uncertainty					
Extrapolated boundary effect	± 3 %	Normal	1	± 3 %	± 5 %
Probe positioning error	± 0.1 mm	Normal	1	± 1 %	
Integrated and cube orientation	± 3 %	Normal	1	± 3 %	
Cube Shape inaccuracies	± 2 %	Rectangle	1	± 1.2 %	
Device positioning	± 6 %	Normal	1	± 6 %	
Combined Uncertainties				± 11.7 %	± 5 %

Measurement uncertainties in SAR measurements are difficult to quantify due to several variables including biological, physiological, and environmental. However, the estimated measurement uncertainties in SAR are less than 15-25 %.

According to ANSI/IEEE C95.3, the overall uncertainties are difficult to assess and will vary with the type of meter and usage situation. However, accuracy's of ± 1 to 3 dB can be expected in practice, with greater uncertainties in near-field situations and at higher frequencies (shorter wavelengths), or areas where large reflecting objects are present. Under optimum measurement conditions, SAR measurement uncertainties of at least ± 2 dB can be expected.

According to CENELEC, typical worst-case uncertainty of field measurements is ± 5 dB. For well-defined modulation characteristics the uncertainty can be reduced to ± 3 dB.

14.0 REFERENCES

- (1) ANSI, *ANSI/IEEE C95.1: IEEE Standard for Safety Levels with Respect to Human Exposure to Radio Frequency Electromagnetic Fields, 3kHz to 300 Ghz*, The Institute of Electrical and Electronics Engineers, Inc., New York, NY 10017, 1992;
- (2) Federal Communications Commission, “Evaluating Compliance with FCC Guidelines for Human Exposure to Radio frequency Electromagnetic Fields”, OET Bulletin 65, FCC, Washington, D.C. 20554, 1997;
- (3) Thomas Schmid, Oliver Egger, and Neils Kuster, “Automated E-field scanning system for dosimetric assessments”, *IEEE Transaction on Microwave Theory and Techniques*, Vol. 44, pp. 105 – 113, January, 1996.
- (4) Niels Kuster, Ralph Kastle, and Thomas Schmid, “Dosimetric evaluation of mobile communications equipment with know precision”, *IEICE Transactions of Communications*, vol. E80-B, no. 5, pp. 645 – 652, May 1997.

APPENDIX A - SAR MEASUREMENT DATA

Descartes Corp. Model: P2000 CDPD

Generic Twin Phantom; Flat Section; Position: (90°,90°)

Probe: ET3DV6 - SN1387; ConvF(6.43,6.43,6.43); Crest factor: 1.0

Muscle 835 MHz: $\sigma = 0.95$ mho/m $\epsilon_r = 56.1$ $\rho = 1.00$ g/cm³

Coarse: Dx = 20.0, Dy = 20.0, Dz = 10.0

Cube 5x5x7:

SAR (10g): 2.36 mW/g

Hand SAR At 0.0cm Separation - Antenna Side Of EUT

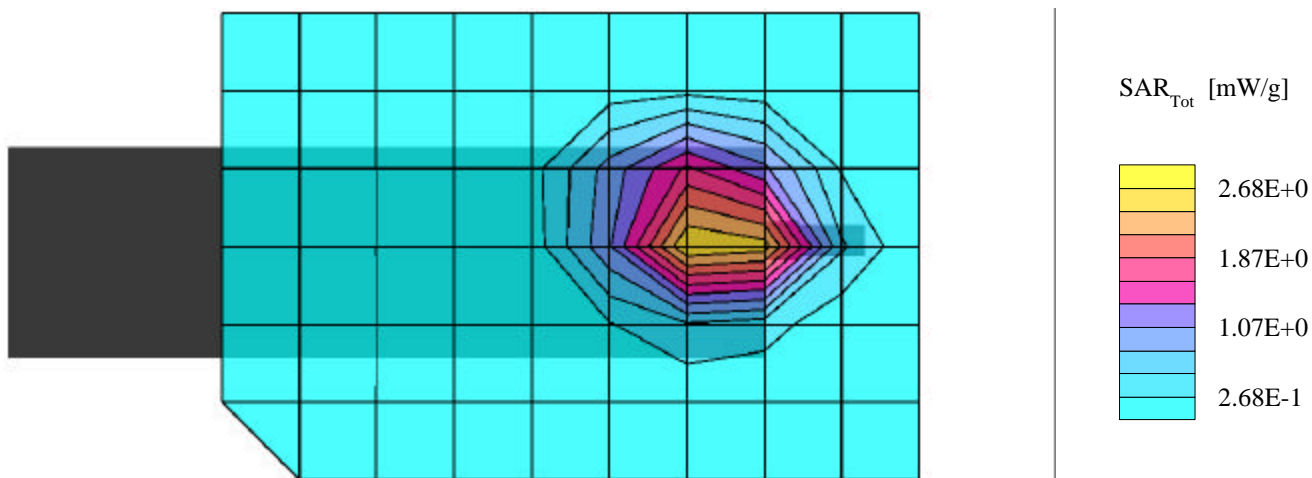
Model: P2000 CDPD

Unmodulated Carrier

Low Channel 991 [824.04 MHz]

Conducted Power: Max.

Date Tested: April 17, 2001



Descartes Corp. Model: P2000 CDPD

Generic Twin Phantom; Flat Section; Position: (90°,90°)

Probe: ET3DV6 - SN1387; ConvF(6.43,6.43,6.43); Crest factor: 1.0

Muscle 835 MHz: $\sigma = 0.95$ mho/m $\epsilon_r = 56.1$ $\rho = 1.00$ g/cm³

Coarse: Dx = 20.0, Dy = 20.0, Dz = 10.0

Cube 5x5x7:

SAR (10g): 2.86 mW/g

Hand SAR with 0.0cm Separation - Antenna Side of EUT

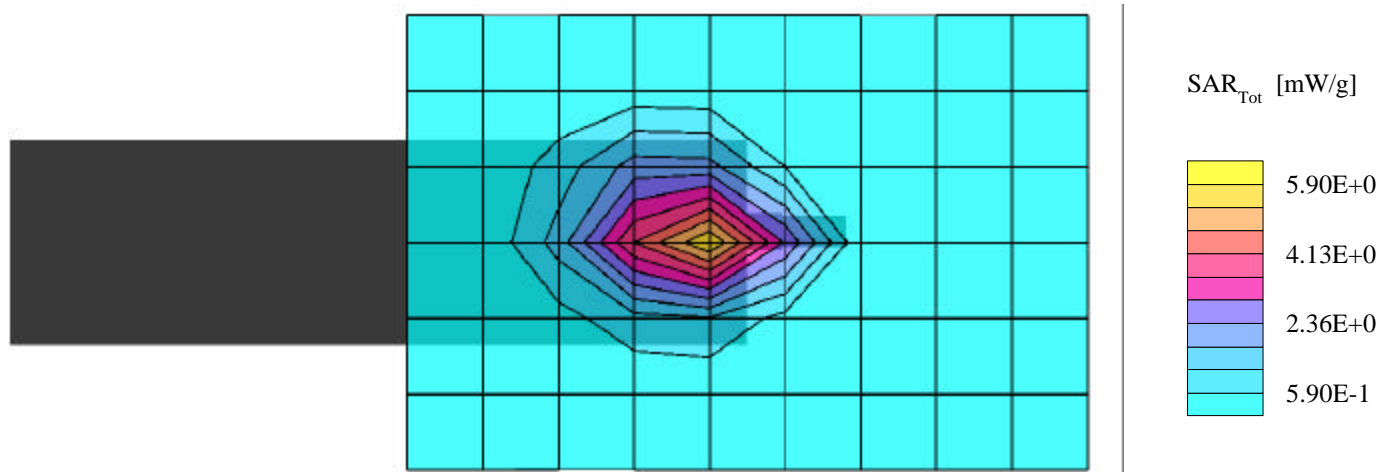
Model: P2000 CDPD

Unmodulated Carrier

Mid Channel 383 [836.49 MHz]

Conducted Power: Max.

Date Tested: April 17, 2001



Descartes Corp. Model: P2000 CDPD

Generic Twin Phantom; Flat Section; Position: (90°,90°)

Probe: ET3DV6 - SN1387; ConvF(6.43,6.43,6.43); Crest factor: 1.0

Muscle 835 MHz: $\sigma = 0.95$ mho/m $\epsilon_r = 56.1$ $\rho = 1.00$ g/cm³

Coarse: Dx = 20.0, Dy = 20.0, Dz = 10.0

Cube 5x5x7:

SAR (10g): 2.26 mW/g

Hand SAR with 0.0cm Separation - Antenna Side of EUT

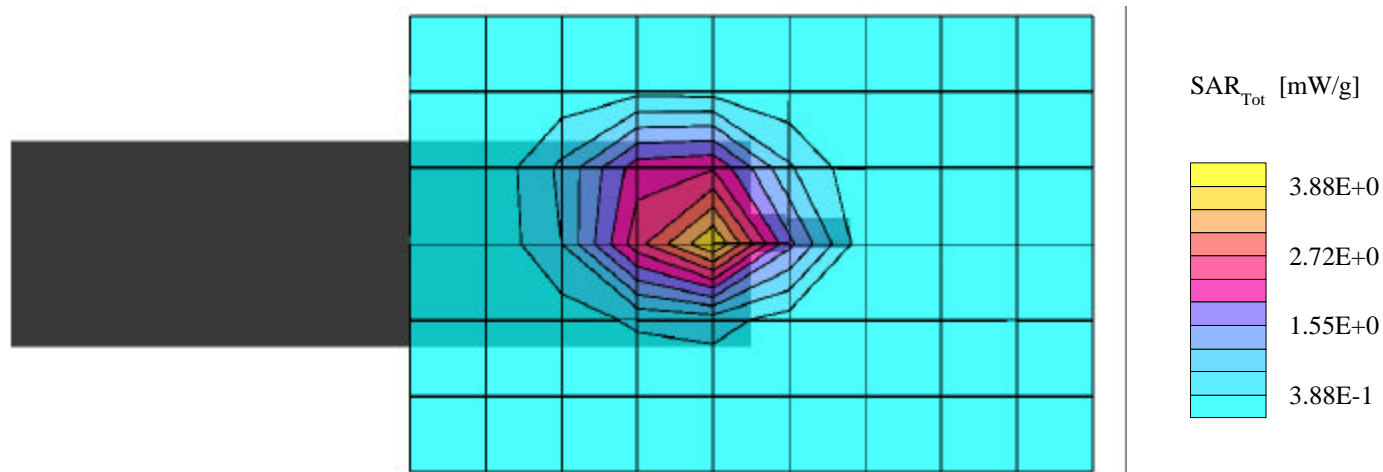
Model: P2000 CDPD

Unmodulated Carrier

High Channel 799 [848.97 MHz]

Conducted Power: Max.

Date Tested: April 17, 2001



Descartes Corp. Model: P2000 CDPD

Generic Twin Phantom; Flat Section; Position: (90°,90°)

Probe: ET3DV6 - SN1387; ConvF(6.43,6.43,6.43); Crest factor: 1.0

Muscle 835 MHz: $\sigma = 0.95$ mho/m $\epsilon_r = 56.1$ $\rho = 1.00$ g/cm³

Coarse: Dx = 20.0, Dy = 20.0, Dz = 10.0

Cube 5x5x7:

SAR (1g): 0.319 mW/g, SAR (10g): 0.192 mW/g

Body SAR with 1.0cm Separation - Antenna Side of EUT

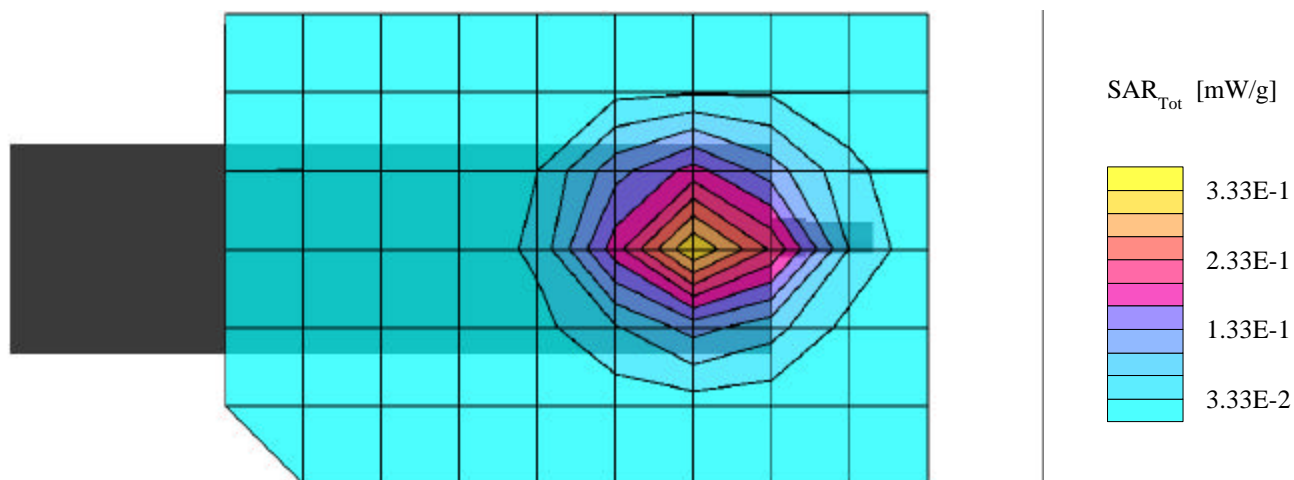
Model: P2000 CDPD

Unmodulated Carrier

Low Channel 991 [824.04 MHz]

Conducted Power: Max.

Date Tested: April 17, 2001



Descartes Corp. Model: P2000 CDPD

Generic Twin Phantom; Flat Section; Position: (90°,90°)

Probe: ET3DV6 - SN1387; ConvF(6.43,6.43,6.43); Crest factor: 1.0

Muscle 835 MHz: $\sigma = 0.95$ mho/m $\epsilon_r = 56.1$ $\rho = 1.00$ g/cm³

Coarse: Dx = 20.0, Dy = 20.0, Dz = 10.0

Cube 5x5x7:

SAR (1g): 0.669 mW/g, SAR (10g): 0.406 mW/g

Body SAR with 1.0cm Separation - Antenna Side of EUT

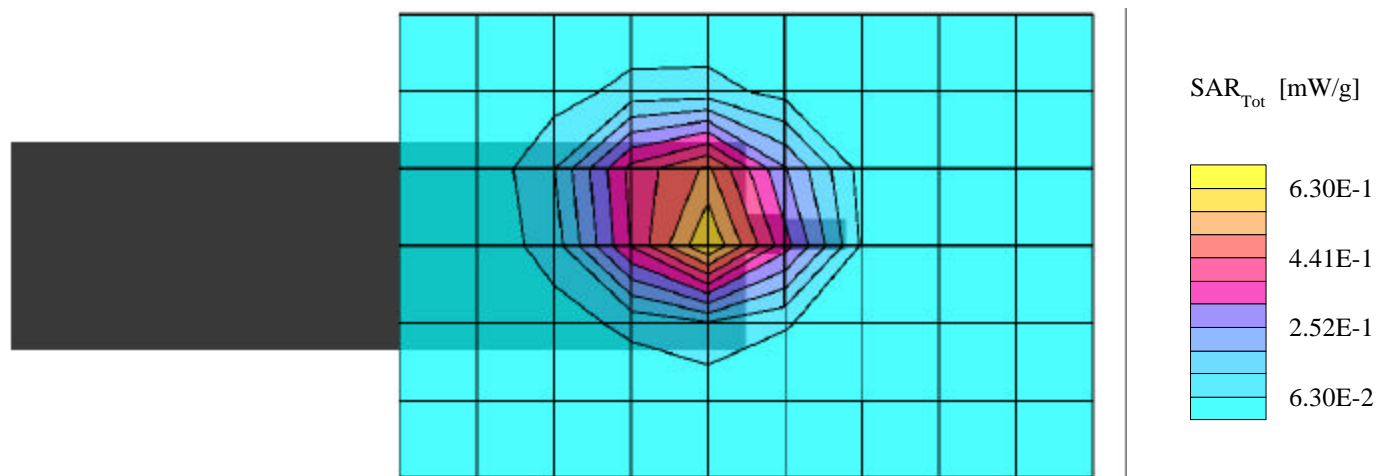
Model: P2000 CDPD

Unmodulated Carrier

Mid Channel 383 [836.49 MHz]

Conducted Power: Max.

Date Tested: April 17, 2001



Descartes Corp. Model: P2000 CDPD

Generic Twin Phantom; Flat Section; Position: (90°,90°)

Probe: ET3DV6 - SN1387; ConvF(6.43,6.43,6.43); Crest factor: 1.0

Muscle 835 MHz: $\sigma = 0.95$ mho/m $\epsilon_r = 56.1$ $\rho = 1.00$ g/cm³

Coarse: Dx = 20.0, Dy = 20.0, Dz = 10.0

Cube 5x5x7:

SAR (1g): 0.783 mW/g, SAR (10g): 0.473 mW/g

Body SAR with 1.0cm Separation - Antenna Side of EUT

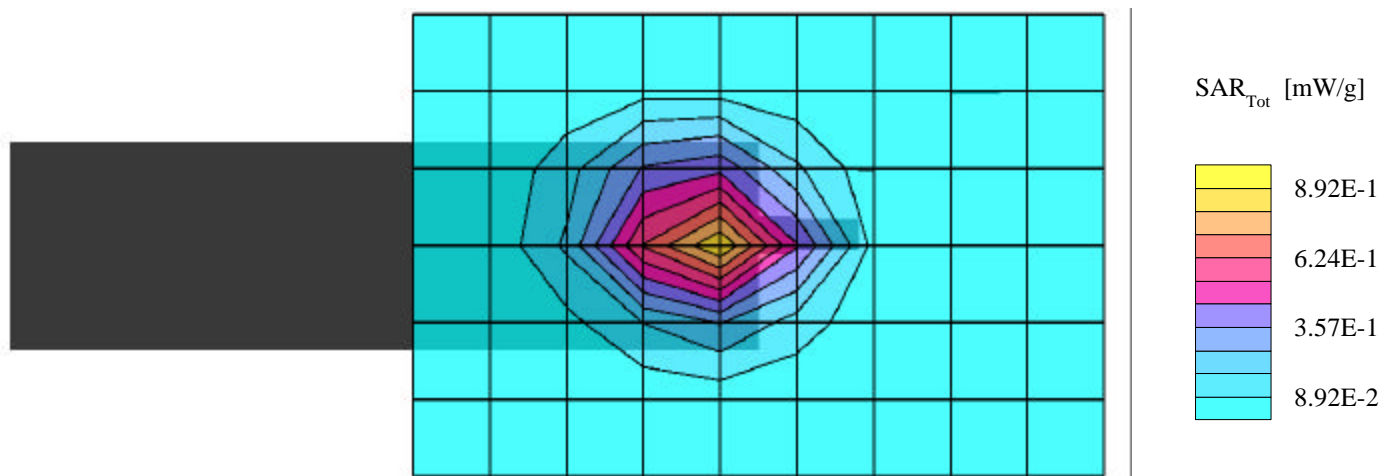
Model: P2000 CDPD

Unmodulated Carrier

High Channel 799 [848.97 MHz]

Conducted Power: Max.

Date Tested: April 17, 2001



Descartes Corp. Model: P2000 CDPD

Generic Twin Phantom; Flat Section; Position: (180°,90°)
Probe: ET3DV6 - SN1387; ConvF(6.43,6.43,6.43); Crest factor: 1.0

Muscle 835 MHz: $\sigma = 0.95$ mho/m $\epsilon_r = 56.1$ $\rho = 1.00$ g/cm³

Coarse: Dx = 20.0, Dy = 20.0, Dz = 10.0

Cube 5x5x7:

SAR (1g): 0.599 mW/g, SAR (10g): 0.240 mW/g

Body SAR with 0.0cm Separation - Antenna End of EUT

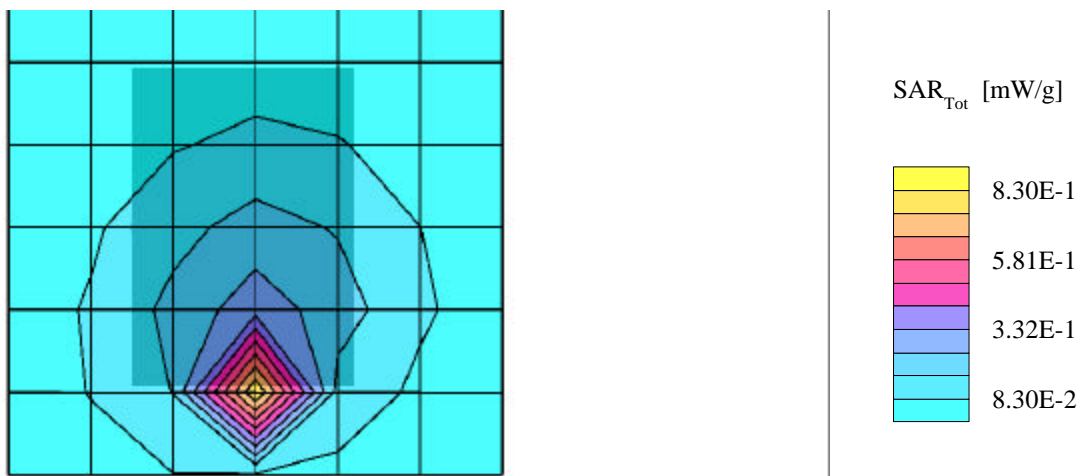
Model: P2000 CDPD

Unmodulated Carrier

Low Channel 991 [824.04 MHz]

Conducted Power: Max.

Date Tested: April 17, 2001



Descartes Corp. Model: P2000 CDPD

Generic Twin Phantom; Flat Section; Position: (180°,90°)
Probe: ET3DV6 - SN1387; ConvF(6.43,6.43,6.43); Crest factor: 1.0

Muscle 835 MHz: $\sigma = 0.95$ mho/m $\epsilon_r = 56.1$ $\rho = 1.00$ g/cm³

Coarse: Dx = 20.0, Dy = 20.0, Dz = 10.0

Cube 5x5x7:

SAR (1g): 0.728 mW/g, SAR (10g): 0.291 mW/g

Body SAR with 0.0cm Separation - Antenna End of EUT

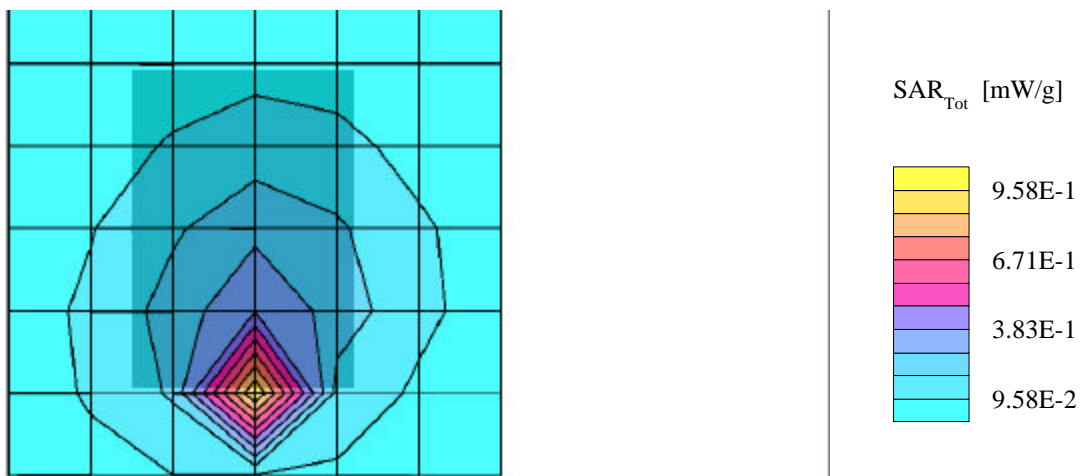
Model: P2000 CDPD

Unmodulated Carrier

Mid Channel 383 [836.49 MHz]

Conducted Power: Max.

Date Tested: April 17, 2001

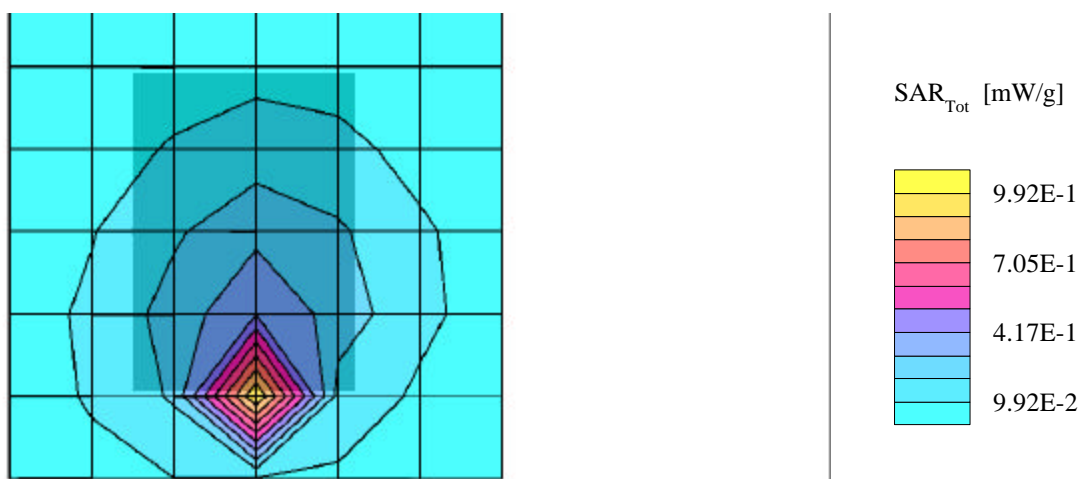


Descartes Corp. Model: P2000 CDPD

Generic Twin Phantom; Flat Section; Position: (180°,90°)
Probe: ET3DV6 - SN1387; ConvF(6.43,6.43,6.43); Crest factor: 1.0
Muscle 835 MHz: $\sigma = 0.95$ mho/m $\epsilon_r = 56.1$ $\rho = 1.00$ g/cm³
Coarse: Dx = 20.0, Dy = 20.0, Dz = 10.0
Cube 5x5x7:
SAR (1g): 0.753 mW/g, SAR (10g): 0.323 mW/g

Body SAR with 0.0cm Separation - Antenna End of EUT

Model: P2000 CDPD
Unmodulated Carrier
High Channel 799 [848.97 MHz]
Conducted Power: Max.
Date Tested: April 17, 2001



Descartes Corp. Model: P2000 CDPD

Generic Twin Phantom; Flat Section; Position: (270°,270°)

Probe: ET3DV6 - SN1387; ConvF(6.43,6.43,6.43); Crest factor: 1.0

Muscle 835 MHz: $\sigma = 0.95$ mho/m $\epsilon_r = 56.1$ $\rho = 1.00$ g/cm³

Coarse: Dx = 20.0, Dy = 20.0, Dz = 10.0

Cube 5x5x7:

SAR (1g): 0.0775 mW/g, SAR (10g): 0.0517 mW/g

Body SAR with 0.0cm Separation - Bottom Side of EUT

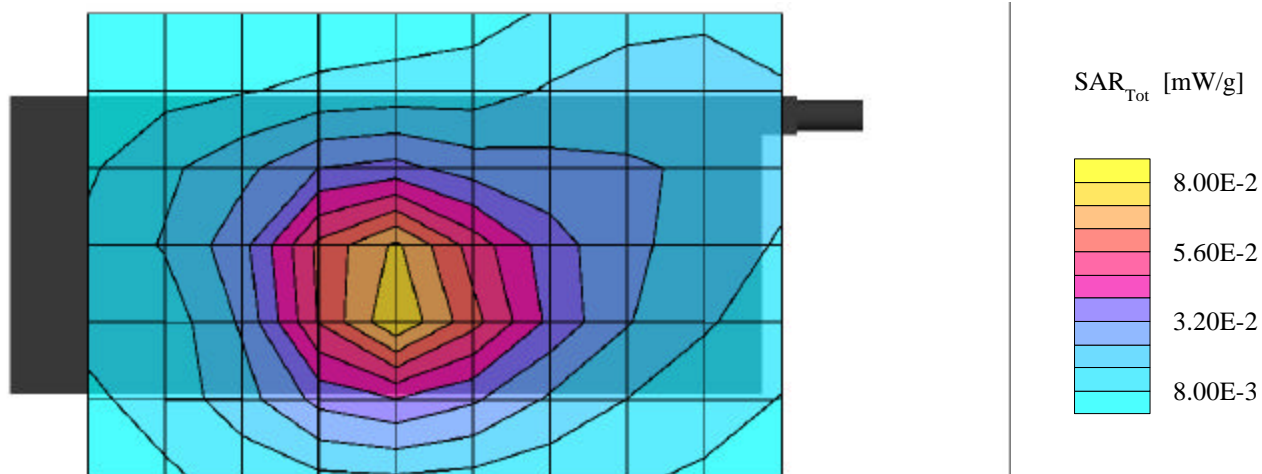
Model: P2000 CDPD

Unmodulated Carrier

Low Channel 991 [824.04 MHz]

Conducted Power: Max.

Date Tested: April 17, 2001



Descartes Corp. Model: P2000 CDPD

Generic Twin Phantom; Flat Section; Position: (270°,270°)

Probe: ET3DV6 - SN1387; ConvF(6.43,6.43,6.43); Crest factor: 1.0

Muscle 835 MHz: $\sigma = 0.95$ mho/m $\epsilon_r = 56.1$ $\rho = 1.00$ g/cm³

Coarse: Dx = 20.0, Dy = 20.0, Dz = 10.0

Cube 5x5x7:

SAR (1g): 0.0971 mW/g, SAR (10g): 0.0651 mW/g

Body SAR At 0.0cm Separation - Bottom Side of EUT

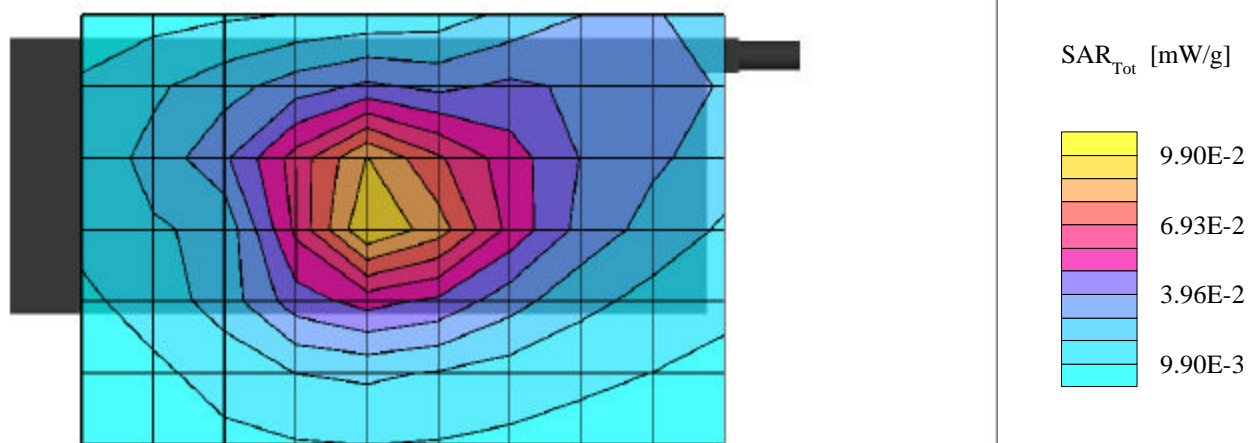
Model: P2000 CDPD

Unmodulated Carrier

Mid Channel 383 [836.49 MHz]

Conducted Power: Max.

Date Tested: April 17, 2001



Descartes Corp. Model: P2000 CDPD

Generic Twin Phantom; Flat Section; Position: (270°,270°)

Probe: ET3DV6 - SN1387; ConvF(6.43,6.43,6.43); Crest factor: 1.0

Muscle 835 MHz: $\sigma = 0.95$ mho/m $\epsilon_r = 56.1$ $\rho = 1.00$ g/cm³

Coarse: Dx = 20.0, Dy = 20.0, Dz = 10.0

Cube 5x5x7:

SAR (1g): 0.0993 mW/g, SAR (10g): 0.0682 mW/g

Body SAR with 0.0cm Separation - Bottom Side of EUT

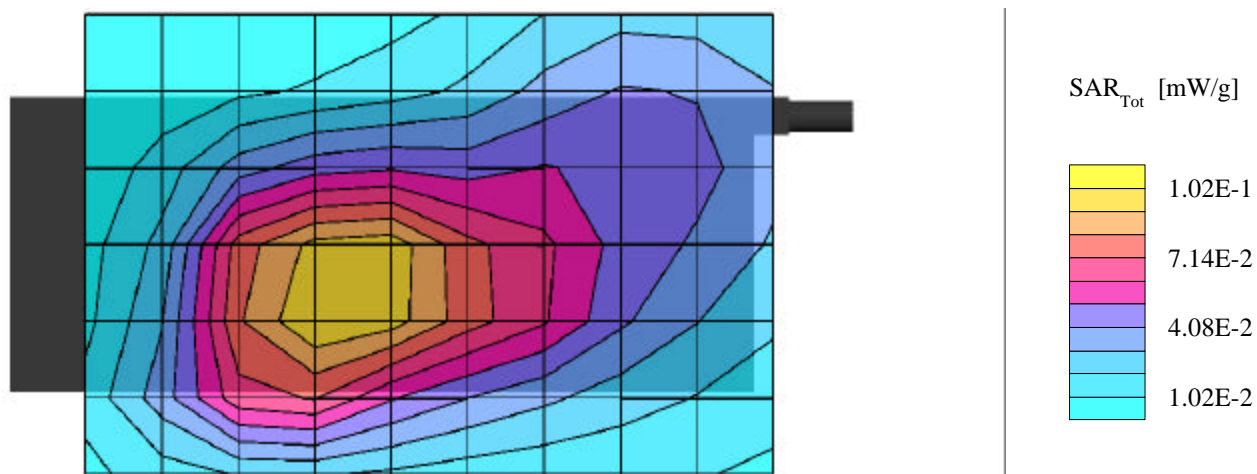
Model: P2000 CDPD

Unmodulated Carrier

High Channel 799 [848.97 MHz]

Conducted Power: Max.

Date Tested: April 17, 2001

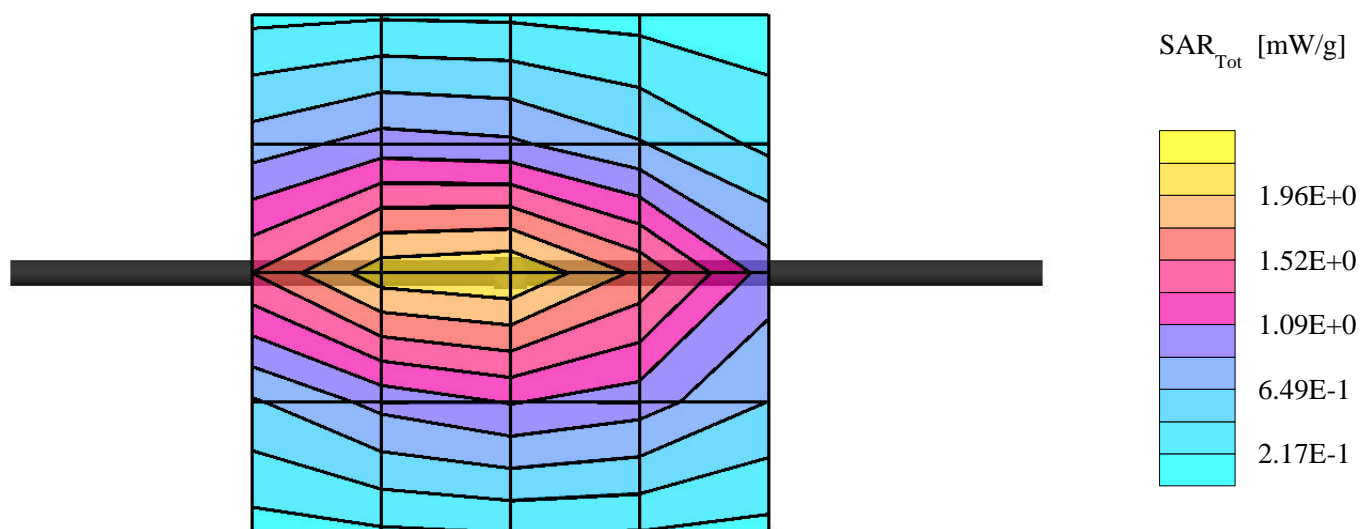


APPENDIX B - DIPOLE VALIDATION

Dipole 835 MHz

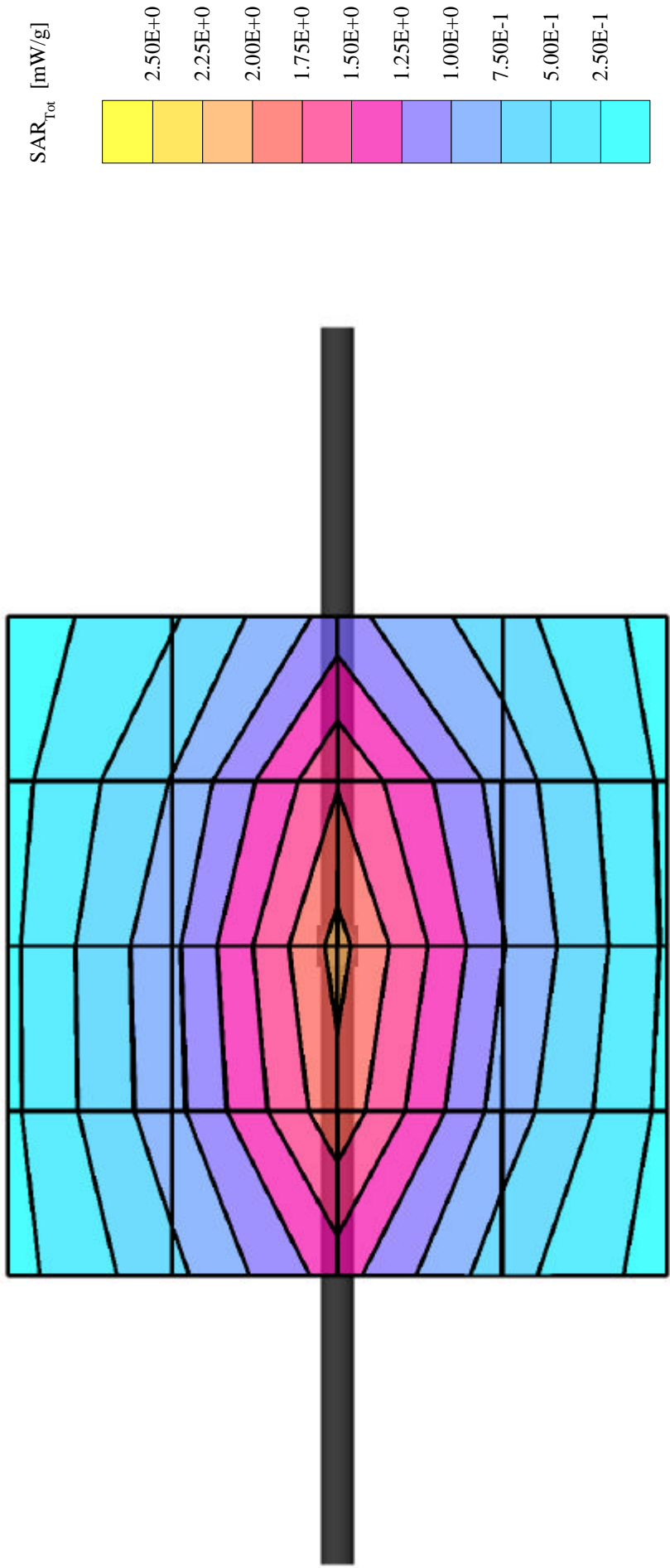
Generic Twin Phantom; Flat Section; Position: (90°,90°);
Probe: ET3DV6 - SN1387; ConvF(6.43,6.43,6.43); Crest factor: 1.0;
Brain 835 MHz: $\sigma = 0.80$ mho/m $\epsilon_r = 44.2$ $\rho = 1.00$ g/cm³
Coarse: Dx = 20.0, Dy = 20.0, Dz = 10.0
Cube 4x4x7
SAR (1g): 2.05 mW/g, SAR (10g): 1.36 mW/g

Validation Date: April 17, 2001



Validation Dipole D835V2 SN:411, d = 15mm

Frequency: 835 MHz; Antenna Input Power: 250 [mW]
Generic Twin Phantom; Flat Section; Grid Spacing: Dx = 20.0, Dy = 20.0, Dz = 10.0
Probe: ET3DV5 - SN1342/DAE3; ConvF(5.75,5.75,5.75); Brain 835 MHz: $\sigma = 0.80$ mho/m $\epsilon_r = 44.2$ $\rho = 1.00$ g/cm³
Cubes (2): Peak: 3.07 mW/g ± 0.05 dB, SAR (1g): 2.06 mW/g ± 0.05 dB, SAR (10g): 1.38 mW/g ± 0.05 dB, (Worst-case extrapolation)
Penetration depth: 13.6 (12.7, 14.8) [mm]
Powerdrift: -0.00 dB



APPENDIX C - PROBE CALIBRATION

Probe ET3DV6

SN:1387

Manufactured:	September 21, 1999
Last calibration:	September 22, 1999

Calibrated for System DASY3

DASY3 - Parameters of Probe: ET3DV6 SN:1387**Sensitivity in Free Space**

NormX	1.55 $\mu\text{V}/(\text{V}/\text{m})^2$
NormY	1.65 $\mu\text{V}/(\text{V}/\text{m})^2$
NormZ	1.64 $\mu\text{V}/(\text{V}/\text{m})^2$

Diode Compression

DCP X	98 mV
DCP Y	98 mV
DCP Z	98 mV

Sensitivity in Tissue Simulating Liquid

Brain **450 MHz** $\epsilon_r = 48 \pm 5\%$ $S = 0.50 \pm 10\% \text{ mho/m}$

ConvF X	6.76 extrapolated	Boundary effect:	
ConvF Y	6.76 extrapolated	Alpha	0.30
ConvF Z	6.76 extrapolated	Depth	2.52

Brain **900 MHz** $\epsilon_r = 42.5 \pm 5\%$ $S = 0.86 \pm 10\% \text{ mho/m}$

ConvF X	6.34 $\pm 7\%$ (k=2)	Boundary effect:	
ConvF Y	6.34 $\pm 7\%$ (k=2)	Alpha	0.47
ConvF Z	6.34 $\pm 7\%$ (k=2)	Depth	2.25

Brain **1500 MHz** $\epsilon_r = 41 \pm 5\%$ $S = 1.32 \pm 10\% \text{ mho/m}$

ConvF X	5.78 interpolated	Boundary effect:	
ConvF Y	5.78 interpolated	Alpha	0.69
ConvF Z	5.78 interpolated	Depth	1.88

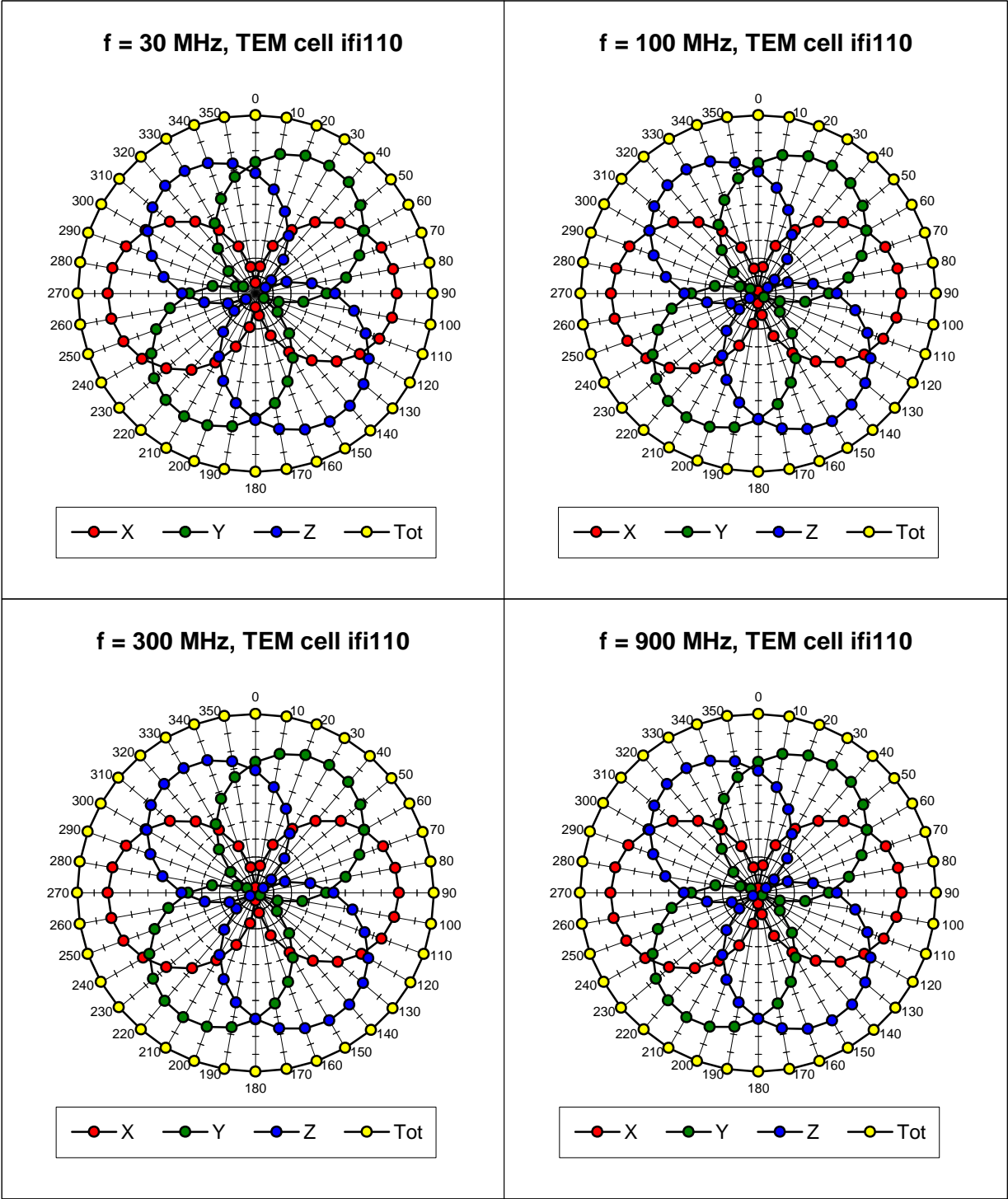
Brain **1800 MHz** $\epsilon_r = 41 \pm 5\%$ $S = 1.69 \pm 10\% \text{ mho/m}$

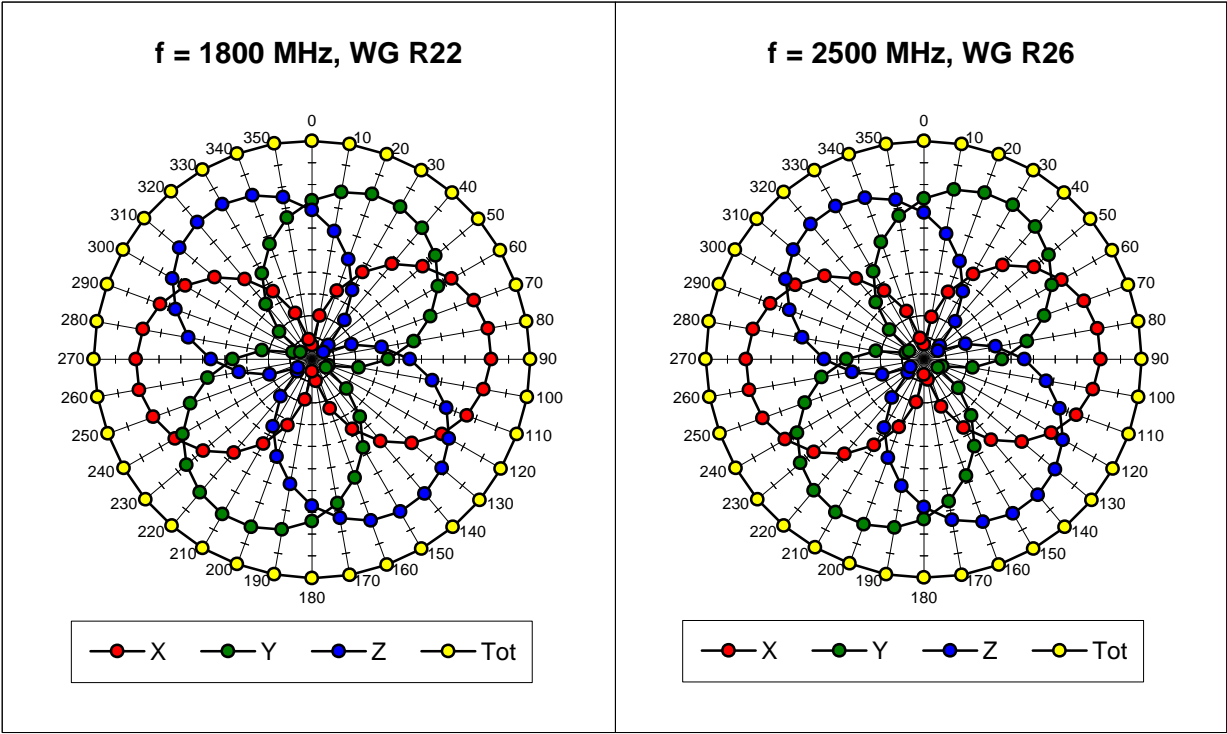
ConvF X	5.50 $\pm 7\%$ (k=2)	Boundary effect:	
ConvF Y	5.50 $\pm 7\%$ (k=2)	Alpha	0.81
ConvF Z	5.50 $\pm 7\%$ (k=2)	Depth	1.70

Sensor Offset

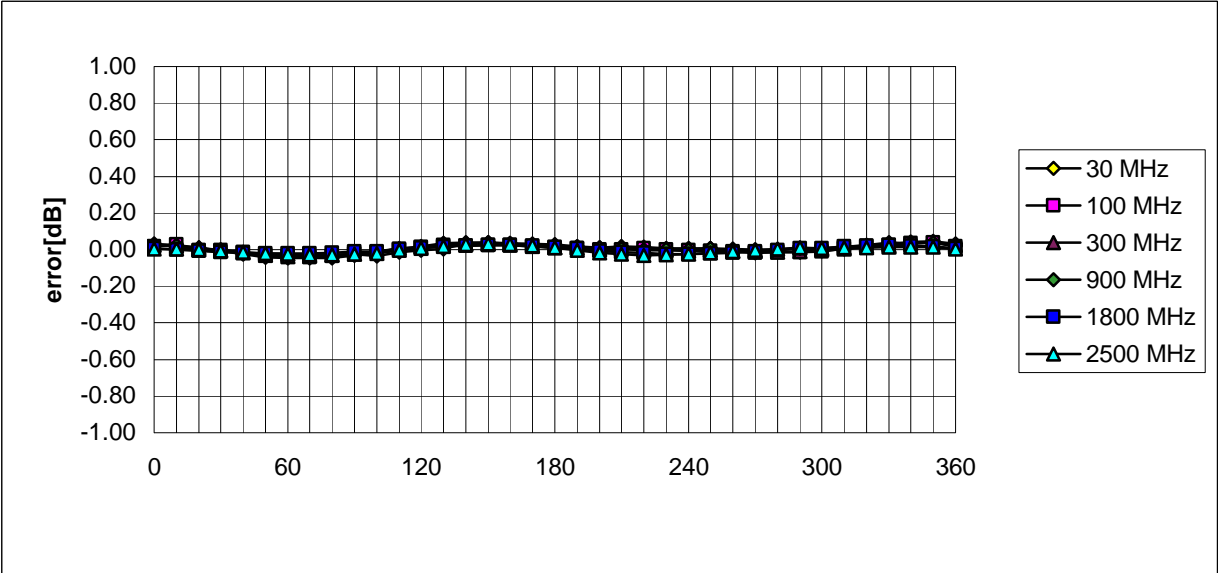
Probe Tip to Sensor Center	2.7	mm
Optical Surface Detection	1.6 \pm 0.2	mm

Receiving Pattern (f) , q = 0°

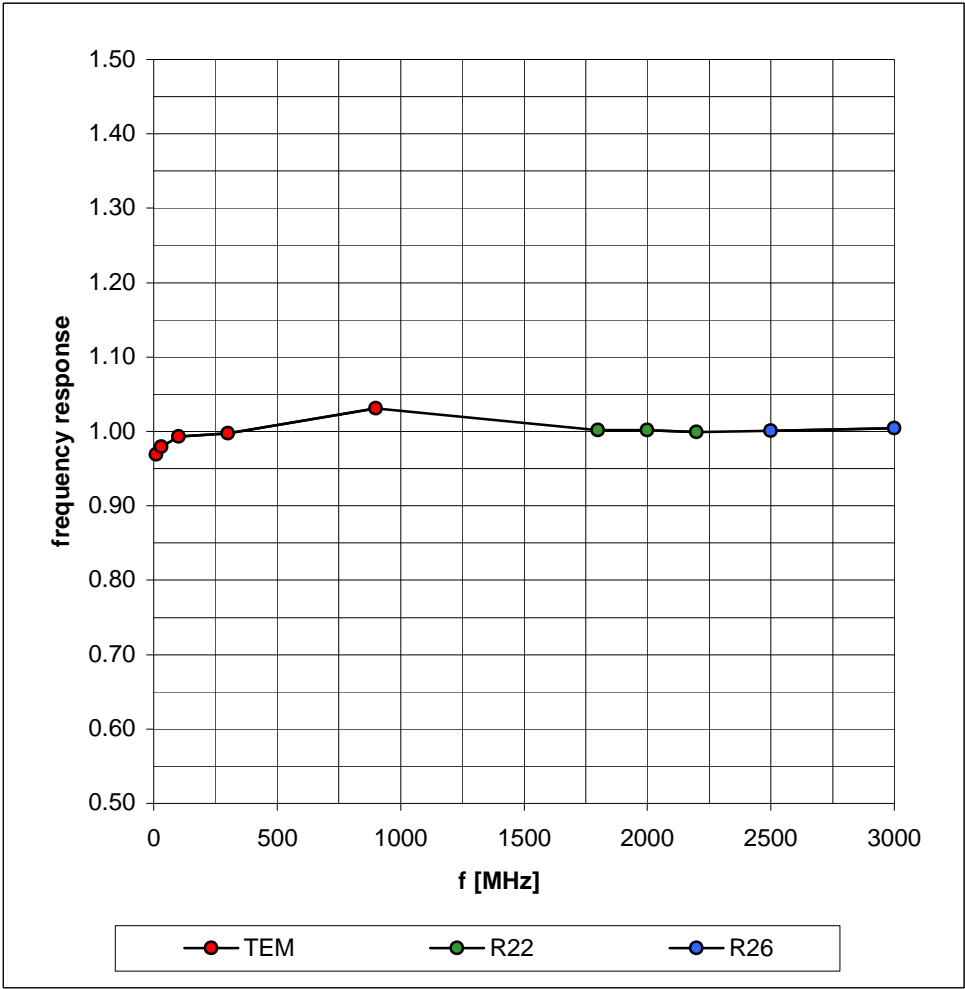




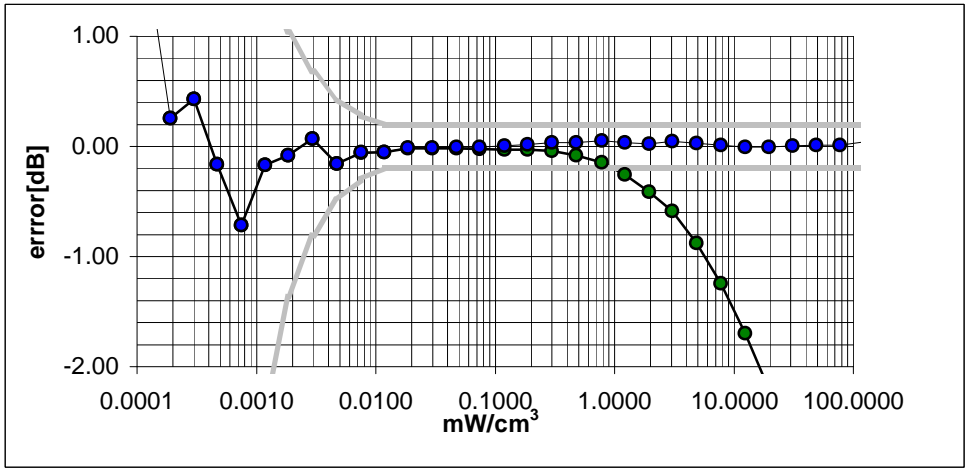
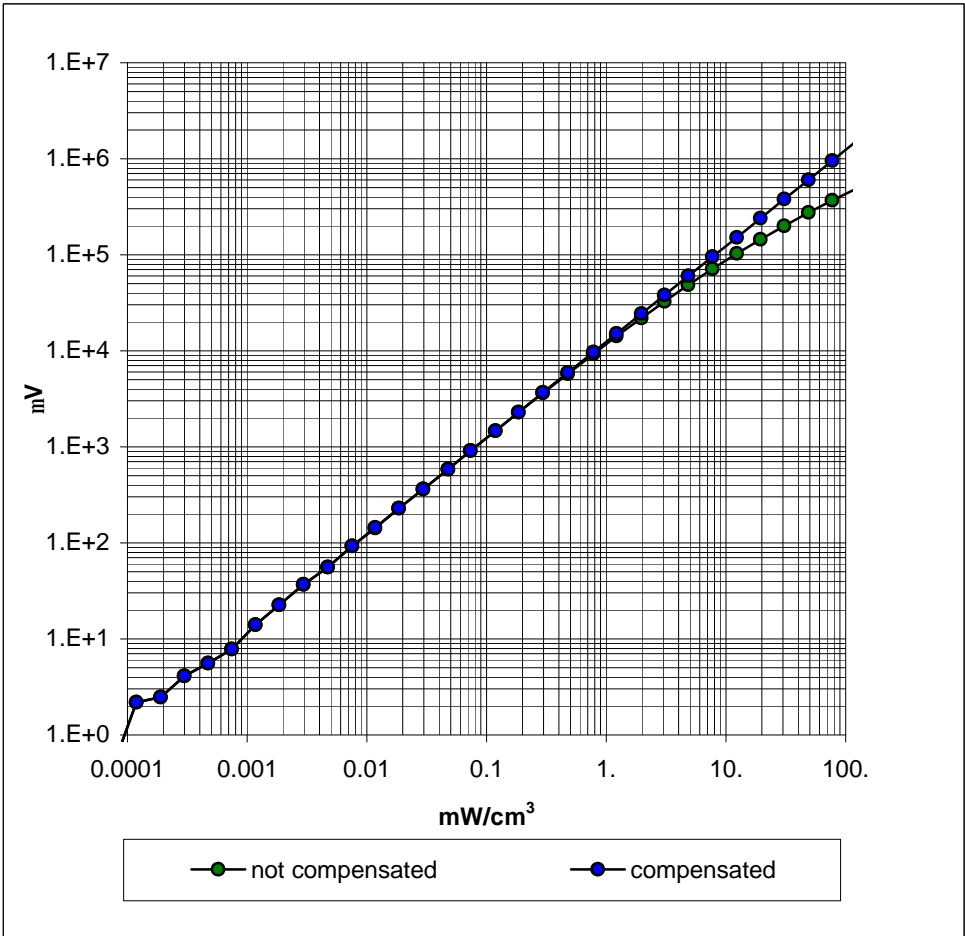
Isotropy Error (f), q = 0°



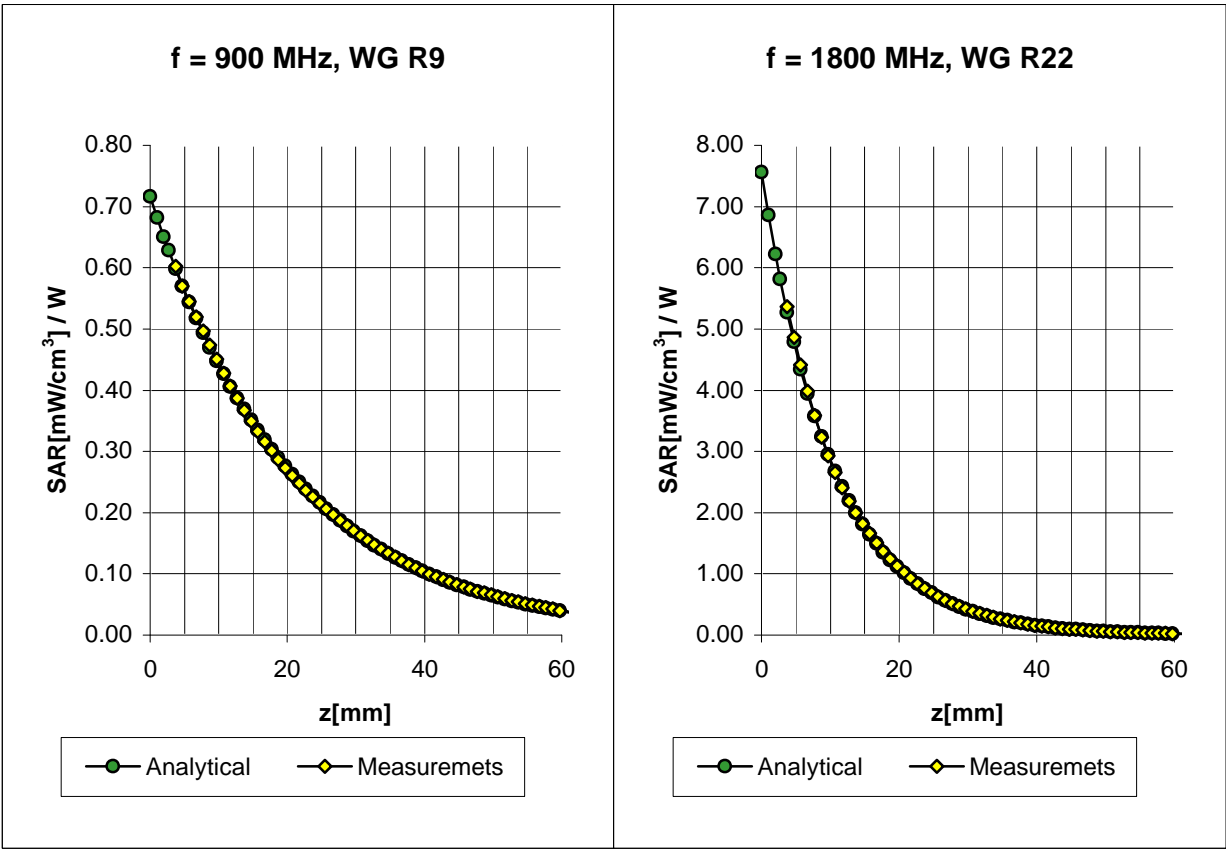
Frequency Response of E-Field
(TEM-Cell:ifi110, Waveguide R22, R26)



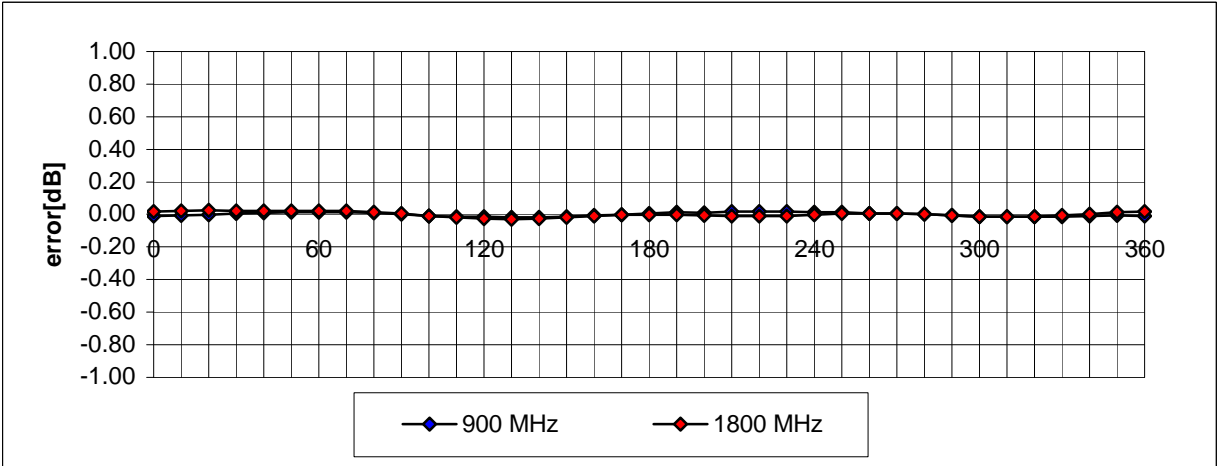
Dynamic Range f(SAR_{brain})
(TEM-Cell:ifi110)



Conversion Factor Assessment



Receiving Pattern (f) (in brain tissue, z = 5 mm)



APPENDIX D - SAR TEST SETUP PHOTOGRAPHS

BODY SAR TEST SETUP
Antenna End of EUT
(Antenna touching phantom surface)



**BODY SAR TEST SETUP
Bottom Side of EUT
(EUT touching phantom surface)**



BODY SAR TEST SETUP
Antenna Side of EUT
(1.0cm separation distance)



HAND SAR TEST SETUP
Antenna Side of EUT
(EUT touching phantom surface)

