

# ChargePro™ 620 Charging Station

---

## Installation Guide



SemaConnect Inc.  
175 Admiral Cochrane Dr, Suite 300  
Annapolis MD 21401  
[www.semaconnect.com](http://www.semaconnect.com)

Version 0.9D



**DANGER**  
Electric  
shock risk

**HAZARDOUS VOLTAGE  
CAN CAUSE SEVERE  
INJURY  
OR DEATH.**

Turn off Main power before  
installing or servicing this device.



# WARNING

**SemaConnect recommends that only a qualified electrical professional should install or service electric vehicle charging station equipment.**

This equipment requires a heavy load electrical connection. Before beginning work, make certain all electrical power has been turned off, such that the electrical supply wires are disconnected from all power sources. This may require that you contact your electric utility to disconnect power to an existing load-center. SemaConnect will not assume responsibility for property damage or personal injury resulting from wrong use or inadequate safety measures in servicing this equipment.

## IMPORTANT SAFETY INSTRUCTIONS

### SAVE THESE INSTRUCTIONS

#### *Install Equipment in Conformance with codes*

This product must be installed in accordance with the National Electrical Code (NEC) or the Canadian Electrical Code (CEC) or any applicable local code. Before installing the equipment do check with your local electrical authority. If you have any questions or need assistance, contact a qualified electrical contractor.

#### *Grounding instructions*

The ChargePro™ 620 Charging Station is grounded using a dedicated grounding conductor that grounds the charging station to the power distribution panel ground.

#### *FCC Compliance Statement*

This equipment has been tested and found to comply with the limits for a Class A digital device pursuant to Part 15 of the FCC Rules. These limits are designed to provide reasonable protection against harmful interference when the equipment is operated in a commercial environment. This equipment generates, uses, and can radiate radio frequency energy and, if not installed and used in accordance with the manufacturer's instruction manual, may cause harmful interference with radio communications.

**Important:** Any Changes or modifications to this product not authorized by SemaConnect, Inc., could affect the EMC compliance and revoke your authority to operate this product.

**Exposure to Radio Frequency Energy:** The radiated power output of the Zigbee radio and cellular modem (optional) in this device is below the FCC radio frequency exposure limits for uncontrolled equipment.

#### *Safety and compliance*

This document provides instructions to install the ChargePro™ 620 Charging Station and should not be used for any other product. Before installing the ChargePro™ 620 Charging Station, you should review this manual carefully and consult with a licensed contractor, licensed electrician and trained installation expert to ensure compliance with local building practices, climate conditions, safety standards, and state and local codes. The ChargePro™ 620 Charging Station should be installed only by a licensed contractor and a licensed electrician and in accordance with all local and national codes and standards. The ChargePro™ 620 Charging Station should be inspected by a qualified installer prior to the initial use. Under no circumstances will compliance with the information in this manual relieve the user of his/her responsibility to comply with all applicable codes or safety standards. This document describes the most commonly-used installation and mounting scenarios. If situations arise in which it is not possible to perform an installation following the procedures provided in this document, contact SemaConnect. SemaConnect is not responsible for any damages that may occur resulting from custom installations that are not described in this document.

#### *No accuracy guarantee*

Reasonable effort was made to ensure that the specifications and other information in this manual are accurate and complete at the time of its publication. However, the specifications and other information in this manual are subject to change at any time without prior notice.

#### *Warranty information and disclaimer*

Your use of, or modification to, the ChargePro™ 620 Charging Station in a manner in which the ChargePro™ 620 Charging Station is not intended to be used or modified will void the limited warranty. Other than any such limited warranty, SemaConnect products are provided "AS IS," and SemaConnect and its distributors expressly disclaim all implied warranties, including any warranty of design, merchantability, and fitness for a particular purposes and non-infringement, to the maximum extent permitted by law.

#### *Limitation of liability*

IN NO EVENT SHALL SEMACONNECT, INC. OR ITS AUTHORIZED DISTRIBUTORS BE LIABLE FOR ANY INDIRECT, INCIDENTAL, SPECIAL, PUNITIVE, OR CONSEQUENTIAL DAMAGES, INCLUDING WITHOUT LIMITATION, LOST PROFITS, LOST DATA, LOSS OF USE, COST OF COVER, OR LOSS OR DAMAGE TO THE CHARGEPRO™ 620 CHARGING STATION, ARISING OUT OF OR RELATING TO THE USE OR INABILITY TO USE THIS MANUAL, EVEN IF SEMACONNECT, INC. OR ITS AUTHORIZED DISTRIBUTORS HAVE BEEN ADVISED OF THE POSSIBILITY OF SUCH DAMAGES.

#### *Copyright and Trademarks*

Copyright ©2010 SemaConnect, Inc. All rights reserved. This material is protected by the copyright laws of the United States and other countries. It may not be modified, reproduced or distributed without the prior, express written consent of SemaConnect, Inc. ChargePro™ 620 Charging Station is a trademark of SemaConnect, Inc. All other products or services mentioned are the trademarks, service marks, registered trademarks or registered service marks of their respective owners.



# Table of Contents

<b>Chapter 1. Introduction</b>	<b>7</b>
Pre-installation preparation	7
Wiring color code	8
Specifications	9
Wiring Information	10
<b>Chapter 2. Pedestal Mount</b>	<b>11</b>
Manufacturer Supplied Materials for Installation	11
Installation Overview	11
Step 1 - Check boxes for correct content	12
Step 2 – Install Anchor Plate	14
Step 3 - Install Pedestal Unit	16
Step 4 – Attach Cable Rack	17
Step 5 – Install the Charging Station Head Unit	18
<b>Chapter 3. Wall Mount</b>	<b>21</b>
Manufacturer Supplied Materials for Installation	21
Installation Overview	21
Step 1 - Check boxes for correct content	22
Step 2 – Pre-installation preparation	25
Step 3 - Install the Wall/Pole Mount Bracket	27
Step 4 – Attach Cable Rack	28
Step 5 – Install the Charging Station Head Unit	29
<b>Chapter 4. Pole Mount</b>	<b>31</b>
Manufacturer Supplied Materials for Installation	31
Installation Overview	31
Step 1 - Check boxes for correct content	32

<b>Step 2 – Pre-installation preparation</b>	<b>35</b>
<b>Step 3 - Install the Wall/Pole Mount Bracket</b>	<b>36</b>
<b>Step 4 – Attach Cable Rack</b>	<b>37</b>
<b>Step 5 – Install the Charging Station</b>	<b>38</b>
<b><i>A. Appendix</i></b>	<b><i>41</i></b>
<b>Wall Mount Bracket Dimension</b>	<b>41</b>
<b>Pedestal mount dimensions (Front-view)</b>	<b>42</b>
<b>Bollard mount dimensions (Side-view)</b>	<b>43</b>



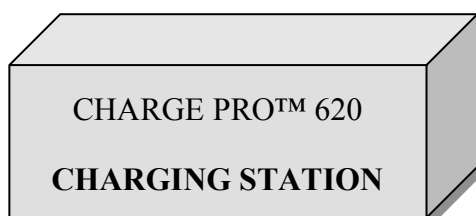
# Chapter 1. Introduction

# 1

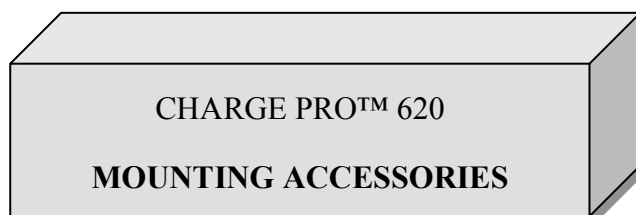
This document provides instructions for installing the ChargePro™ 620 Charging Station.

The ChargePro™ 620 Charging Station is shipped in two boxes.

- **Box-1** – ChargePro™ 620 Charging Station Head Unit, Cable Rack and Cable Rack screws



- **Box-2** –
  - If Pedestal Mount Configuration: Pedestal Unit, Anchor Plate and fasteners
  - If Wall/Pole Mount Configuration: Wall/Pole Mount Bracket, Mounting Template and fasteners



## Pre-installation preparation

This guide assumes that the appropriate wiring, conduit and circuit protection is in place at the installation site.

To assist in the process of preparing the installation site, carefully review the following:

- Wiring color code (*Page 8*)
- ChargePro™ 620 Charging Station technical specifications (*Page 9*)
- Wiring diagrams (*Page 10*)
- Wall/Pole Mounting Template (*included in shipping container*)
- Pedestal Unit Dimensions (*Page 42 - 43*)

Before installing the ChargePro™ 620 Charging Station, please review this entire document to understand the required installation steps prior to beginning the process.

### Wiring color code

The illustrations and diagrams in this document reflect the Level-2 wiring color code. For Level-1 wiring substitute the red wire with the white wire.

Strictly adhere to the wire color codes to ensure proper installation.

#### Level-1 Charging Station (120V):

Use 12 AWG wire minimum (10 AWG preferred) (ensure compliance with electrical codes).

COLOR CODE	BLACK	WHITE	GREEN
SERVICE	PHASE (L)	NEUTRAL	GROUND

#### Level-2 Charging Station (240V or 208V):

Use 10 AWG wire minimum (ensure compliance with electrical codes).

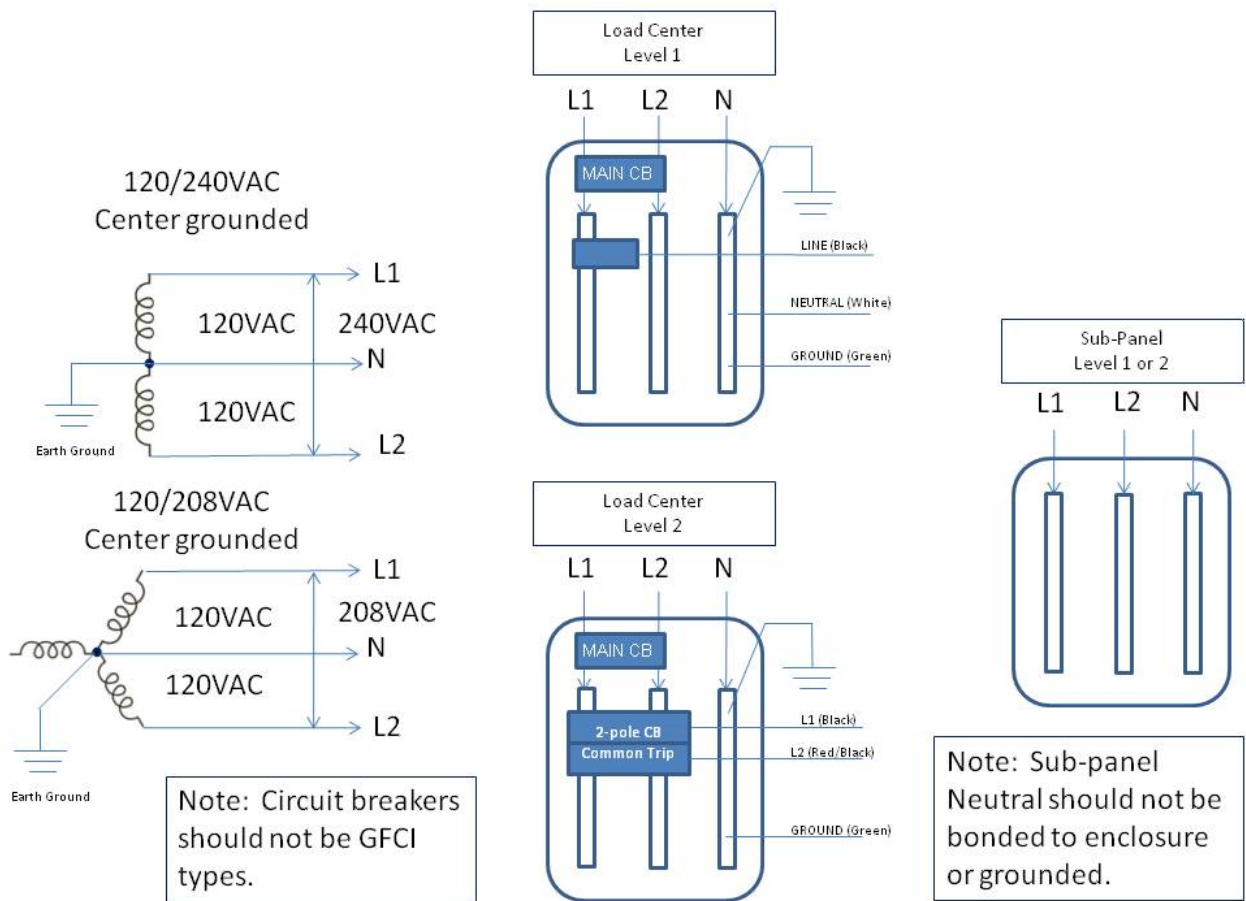
COLOR CODE	BLACK	RED	GREEN
SERVICE	PHASE A (L1)	PHASE B (L2)	GROUND



## Specifications

Power Specs	
AC Power Source	208/240V, center grounded, 60Hz supply 3-wire; Phase A, Phase B, ground (no neutral)
Power to Electric Vehicle	30A maximum, 7.2kW@240VAC
Branch Circuit Protector	2-pole, common trip, circuit breaker Breaker rating 125% of load (40A for 30A load)
Vehicle-to-Charger Connection	SAE J1772 EV Connector via 18 ft Cable (supplied)
Energy Metering Accuracy	1% at 5 min intervals, 0.5% accuracy (optional)
Time-of-Use Metering	Charger support provided
Standby Power	5W typical
Safety Specs	
Personnel Protection System	Charging Circuit Interrupting Device (CCID) Trip Threshold 5 mA, CCID5 per UL2231-2
Automatic <sup>3</sup> Unplug <sup>7</sup> Detection	Charger output voltage terminated Remote notification via SMS or email(owner configured)
Codes and Standards Compliance	Listed to UL2231-1,-2 and UL2594 NEC Article 625 compliant
Network Specs	
Local Area Network	2.4GHz 802.15.4 dynamic mesh network
Wide Area Network	Commercial CDMA or GPRS cellular network
Network Communication Protocol	TCP/IP
Network Security	HTTPS;128-bit AES Encryption
Maximum Charging Station per LAN	128
Smart Card Reader	ISO15693 compliant
Charger Status Indicating Displays	
LED Array	270 deg visibility, multi-color visual status indication
LCD Screen	2 lines, 16 characters per line, backlit
Environmental Specs	
Outdoor Rated	NEMA 3 per NEMA 250-1997, IP44 per IEC 60529
Operating Humidity	Upto 95% non-condensing
Operating Temperature	-30 deg C to +50 deg C ambient
Other Specs	
Surge Protection	6kV@3,000A per UL 2231-2,Extraprotection optional
EMI Compliance	FCC Part15 Class A
Dimensions	18in high x 6 in wide x 6 in deep

Wiring Information



# Chapter 2. Pedestal Mount

# 2

This chapter covers the installation of the ChargePro™ 620 Charging Station using a Pedestal Unit.

## Manufacturer Supplied Materials for Installation

- The following items can be found in Box- 1
  - ChargePro™ 620 Charging Station Head Unit
  - Cable Rack and Cable Rack mounting screws (4ea)
- The following items can be found in Box- 2
  - ChargePro™ 620 Charging Station Pedestal Unit
  - Charging Station Anchor Plate
  - Anchor Bolts
  - Tamper- resistant screwdriver

## Installation Overview

1. Check the boxes for correct content
2. Install the Anchor Plate
3. Install the Pedestal Unit
4. Attach the Cable Rack
5. Install the Charging Station Head Unit

The steps are further detailed in the remainder of this chapter.

### Step 1 - Check boxes for correct content

The ChargePro™ 620 Charging Station shipping boxes contain:

#### Box-1 - Charging Station

- ChargePro™ 620 Charging Station Head Unit



- Cable Rack

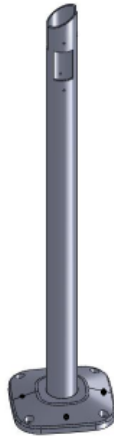


- Cable Rack mounting screws (4ea)



### Box-2 – Mounting Accessories

- ChargePro™ 620 Charging Station Pedestal Unit



- Head Unit mounting screws (4ea) with tamper-resistant screwdriver



- Pedestal Unit anchor bolts (4ea)



- Anchor Plate

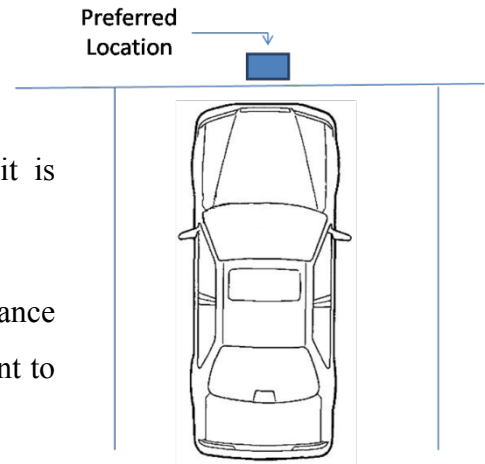


### Step 2 – Install Anchor Plate

#### Site Selection

Select the location for the charging station. To mount the charging station, first prepare a concrete pad such that it is properly aligned to the parking space.

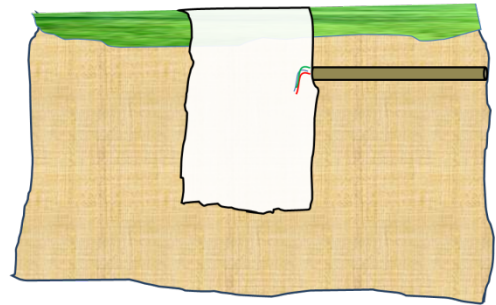
The concrete pad should be positioned such the distance between the charging station and electric vehicle is sufficient to minimize likelihood of damage (suggested min. 3 ft).



#### Site Preparation

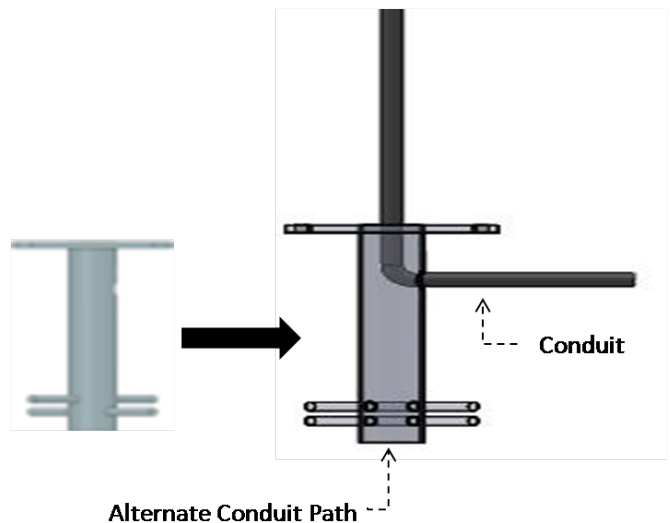
The Anchor Plate is 18 inches in height; therefore it is recommended that the concrete pad is at least 24 inches in depth (check local codes).

In preparation for the concrete pad, excavate to a depth of 24 inches, length 18 inches (recommended), width 18 inches (recommended). Trench for electrical conduit into this hole (check local codes).



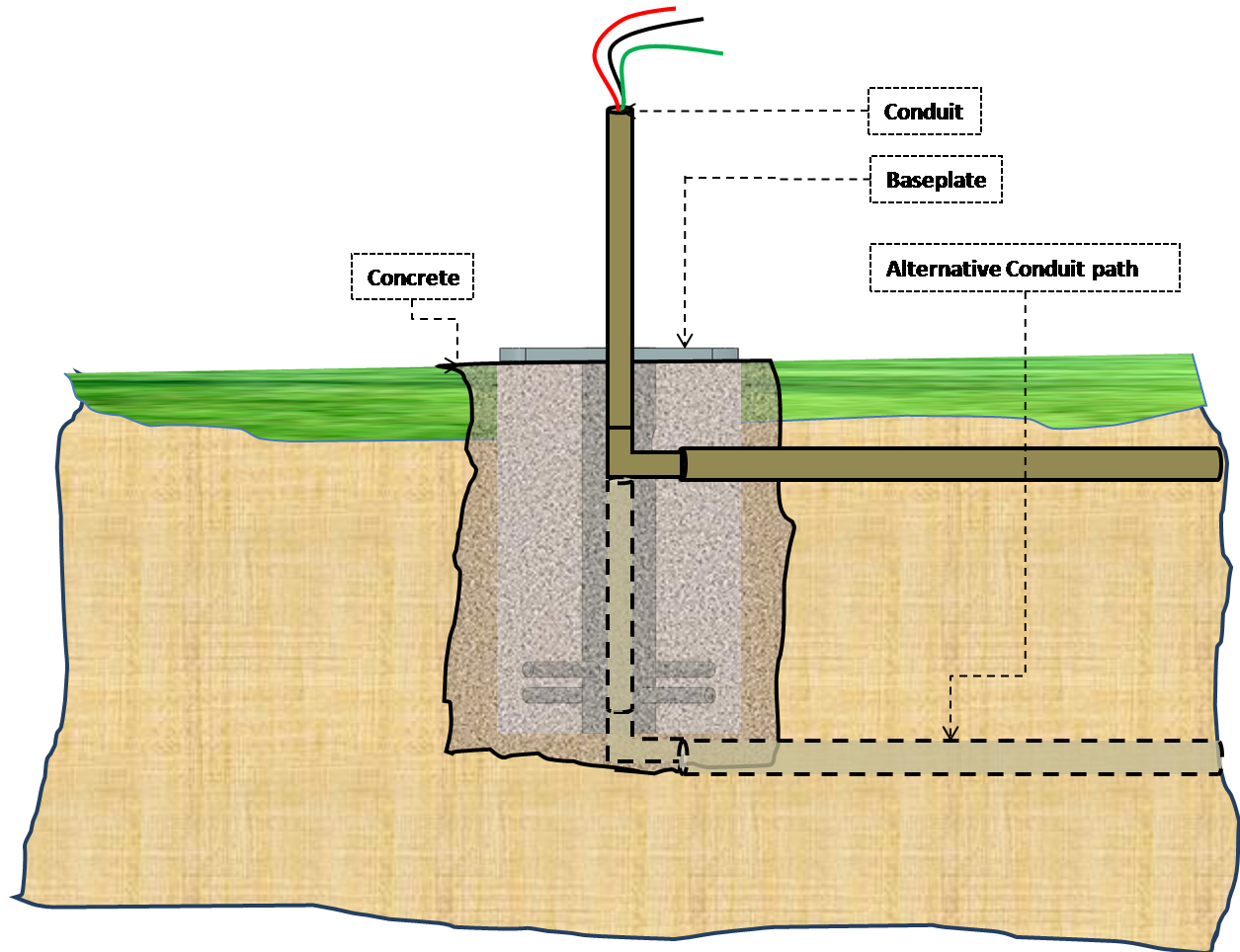
#### Prepare the Anchor Plate

To prepare the Anchor Plate for installation, run conduit through the anchor as illustrated in the diagram. The conduit should run either through the side hole in the Anchor Plate post or through the bottom of the post itself. The conduit should extend 2.5ft above the anchor plate (check local codes).



Next, pass wires through the conduit such that the free end of the wires extends at least 12 inches from the opening, giving enough slack to facilitate the connection to the device.

Also, note the alternative conduit path.



Pour concrete to fill the hole as shown above in the diagram. As the concrete fills up, with the help of a Level, ensure that the base plate is parallel to the ground.

Allow sufficient time for the concrete to harden before going to the next step.

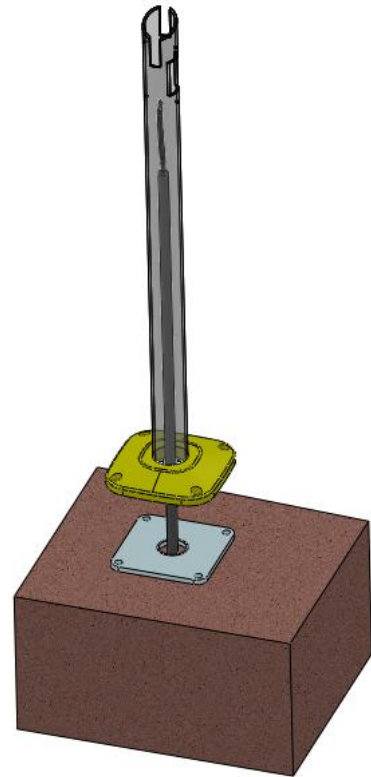
### Step 3 - Install Pedestal Unit

#### Insert the Pedestal

Now we are ready to install the Pedestal Unit. Carefully place the Pedestal Unit over the conduit and wires as illustrated in the diagram.

Place the Pedestal Unit on the Anchor Plate such that the bolt holes are aligned.

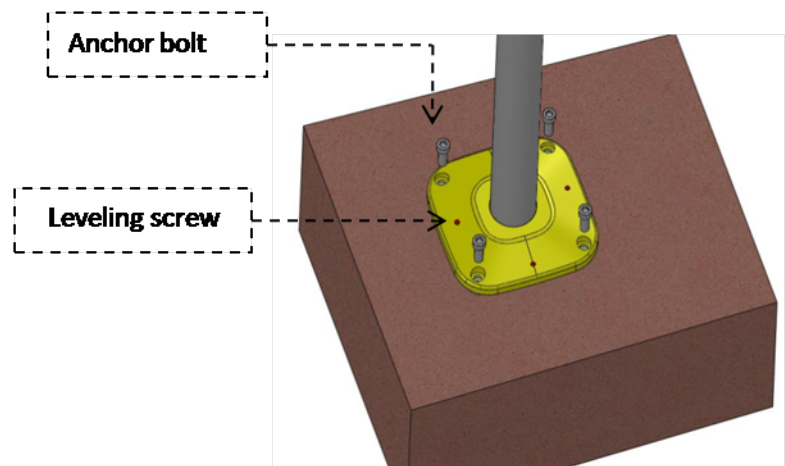
Ensure that the electric wires can be easily accessed through the access window provided in the Pedestal's top section.



#### Anchor bolts & Leveling screws

First insert anchor bolts and secure with one or two turns, but do not tighten.

Note: The leveling screws that can be found on four sides are used to adjust for plumb.



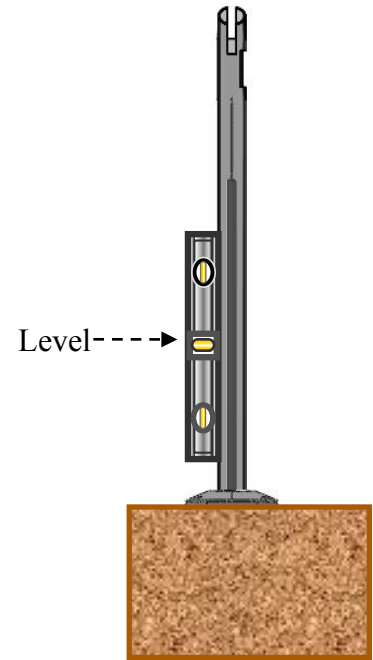


### Ensure Pedestal is Plumb

Adjust leveling screws to make pedestal plumb (check with Level at two points separated by 90 degrees).

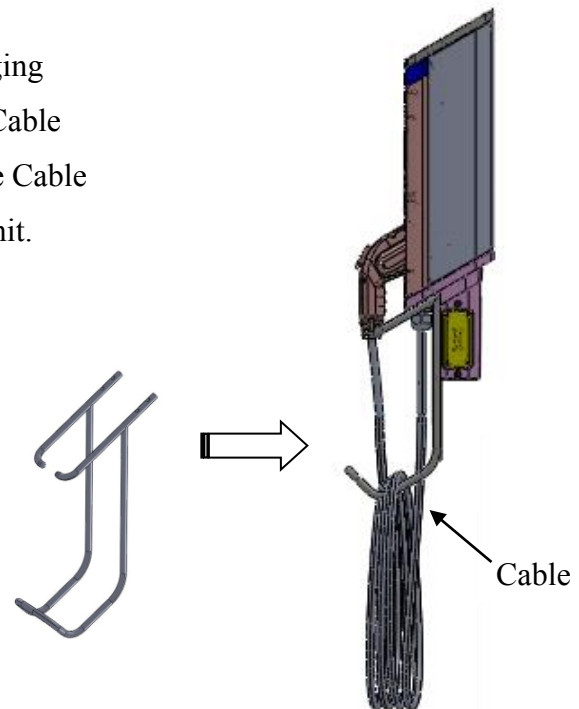
### Tighten the anchor bolts

Gradually tighten anchor bolts to secure the Pedestal Unit to the Anchor Plate. Re-check for plumb.



### Step 4 – Attach Cable Rack

Attach the Cable Rack to the underside of the Charging Station Head Unit (see diagram) using the four (4) Cable Rack screws. After tightening screws, check that the Cable Rack is secure and is firmly attached to the Head Unit.

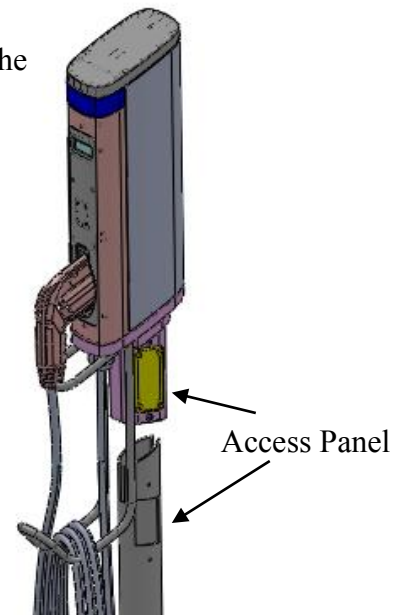


## Step 5 – Install the Charging Station Head Unit

Next install the ChargePro™ 620 Charging Station Head Unit onto the Pedestal.

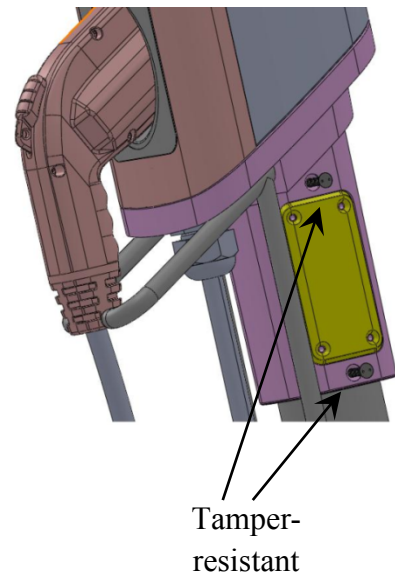
### Mount the charging station head unit

Carefully insert the charging station head unit on top of the pedestal as shown in the illustration. The access panel cut-outs on the Pedestal Unit and Head Unit should be aligned.



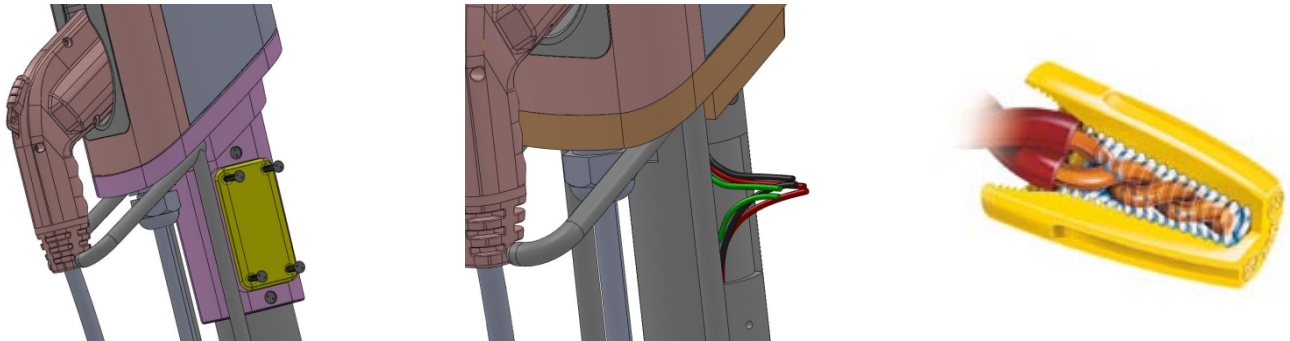
### Firmly fasten the charging station

As illustrated, attach the Charging Station Head Unit to the Pedestal Unit with the four tamper-resistant screws provided (two on each side). Ensure the charging station is plumb using a level. Check that the Head Unit is now securely fastened to the Pedestal.



### Connecting the wires

Open the Access Panel by removing the four screws. Locate and access the wires inside. Carefully pull these wires a few inches outside of the access panel, to reveal 3 wires coming from the Charging Station Head Unit (for Level-2 charging stations the color codes are Red, Black and Green) and 3 wires from the Pedestal with the same color combination. Remove the insulation on each wire and prepare to connect those using wire-nuts.



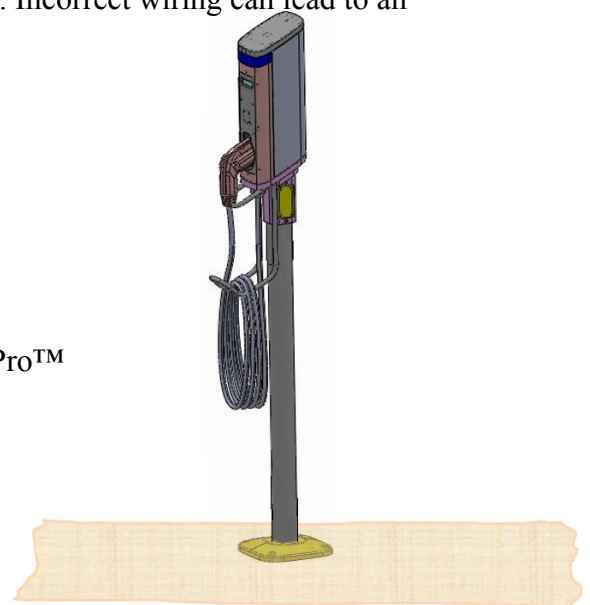
Match the wires using the colors (Black-Black, Green-Green & Red-Red) and connect them using wire nuts as illustrated above. Once connected, slowly insert the wires into the device and replace the access panel cover using the screws previously removed.

**Caution:** Refer to the wire color codes (*Page 8*) and strictly adhere to this convention while connecting the charging station and electrical supply wires. Incorrect wiring can lead to an electrical hazard.

### Power Up

#### Congratulations!

You have now finished the installation of the ChargePro™ 620 Charging Station! You can now power up the device.





---

# Chapter 3. Wall Mount

# 3

This chapter covers the installation of the ChargePro™ 620 Charging Station on a wall.

## Manufacturer Supplied Materials for Installation

- The following items can be found in Box-1
  - ChargePro™ 620 Charging Station Head Unit
  - Cable Rack and Cable Rack mounting screws
  
- The following items can be found in Box-2
  - Wall/Pole Mount Bracket Plate
  - Wall/Pole Mount Bracket Post
  - Tamper-resistant screwdriver
  - Wall Mount Template

## Installation Overview

1. Check the boxes for correct content
2. Pre-installation preparation
3. Install Wall/Pole Mount Bracket
4. Attach the Cable Rack
5. Install the Charging Station Head Unit

The steps are further detailed in the remainder of this chapter.

### Step 1 - Check boxes for correct content

The ChargePro™ 620 Charging Station boxes contain:

#### Box-1 - Charging Station Head Unit

- ChargePro™ 620 Charging Station Head Unit



- Cable Rack



- Cable Rack mounting screws (4ea)



---

## Box-2 – Mounting Accessories

- ChargePro™ 620 Charging Station Wall/Pole Mount Bracket Plate



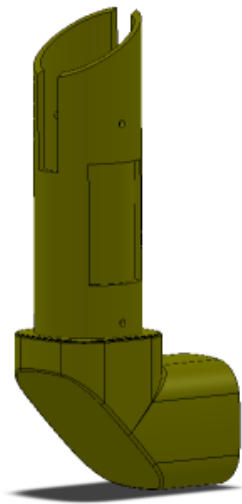
- Wall/Pole Mount Bracket anchor bolts (4ea)



- Wall/Pole Mount Bracket Post screws (3ea)



- Wall/Pole Mount Bracket Post



- Head Unit mounting screws (4ea) with tamper-resistant screwdriver



- Wall Mount Template



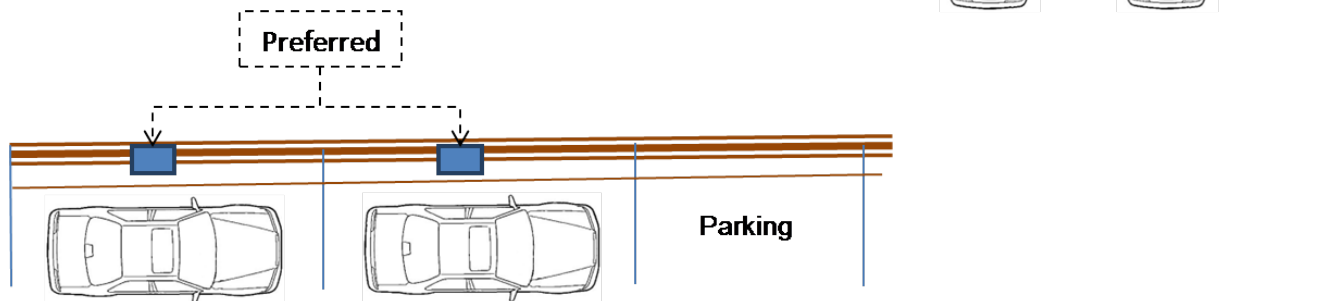


---

## Step 2 – Pre-installation preparation

### Site selection

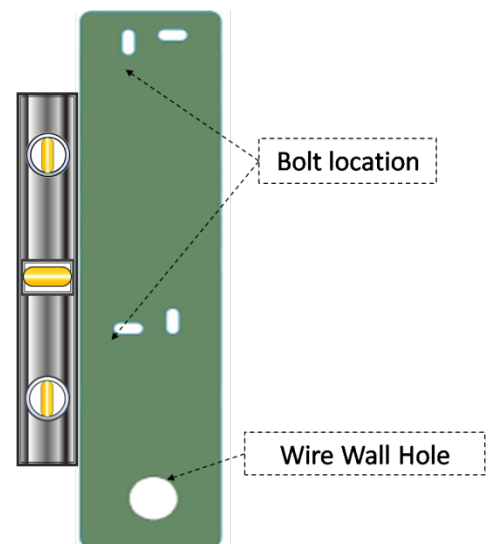
The charging station should be positioned such the distance between the charging station and electric vehicle is sufficient to minimize likelihood of damage (suggested min. 3 ft). Two alternatives are illustrated here.



### Preparing the wall

At the selected location, place the wall-mount template on the wall such that the top of the template is at a height of 49 inches (Check local codes). The equipment should be installed at least 18 inches above the floor.

With the help of a Level, ensure the template is in an upright position. Mark locations for the bolt locations. If running wire inside wall also mark Wire Wall Hole.

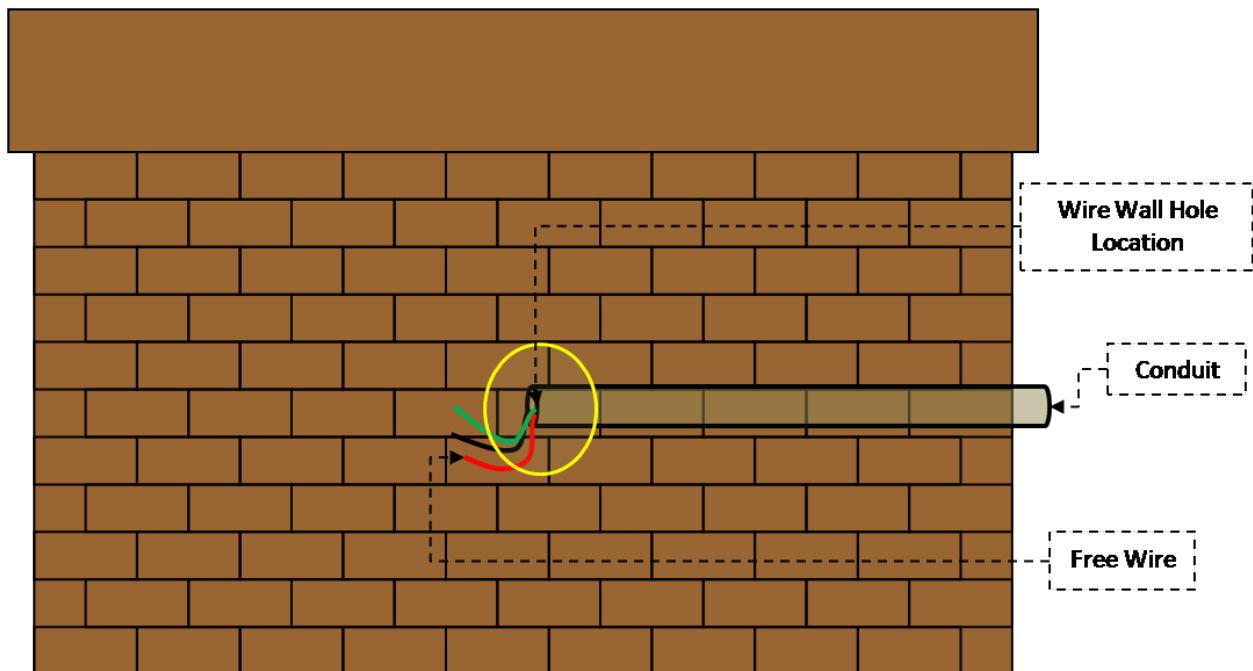


## Charging Station Installation Guide

---

If solid concrete or brick wall, drill  $\frac{1}{2}$  inch diameter holes to a depth of 4 inches for the anchor bolts provided. For walls other than concrete, solid block or brick, use fasteners appropriate for material.

Now, run conduit up to wire wall hole location previously marked on the wall. Run the wires through this conduit up to wire wall hole location with at least 18" (+wall thickness) free wire. See illustration for clarity.



NOTE: If the conduit is run on the same side of the wall as the charging station the wires are then run through the opening on the side of the Wall/Pole Mount Bracket Post.

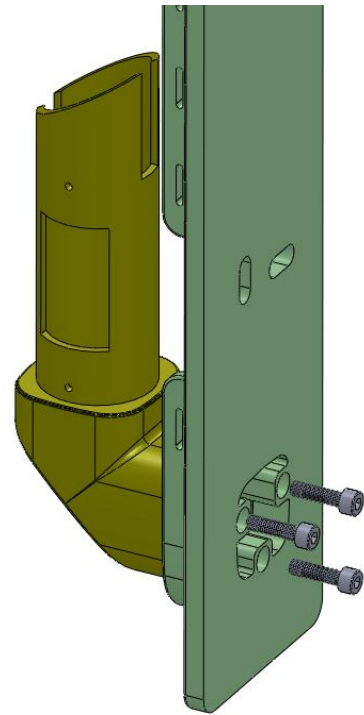
---

## Step 3 - Install the Wall/Pole Mount Bracket

### Prepare the Wall/Pole Mount Bracket

First, prepare the wall bracket to be bolted on to the wall.

Firmly attach the Wall/Pole Mount Bracket Plate to the Wall/Pole Mount Bracket Post using the Wall/Pole Mount Post screws (3ea). Make sure that the Post is securely attached to the Wall Mount Plate.

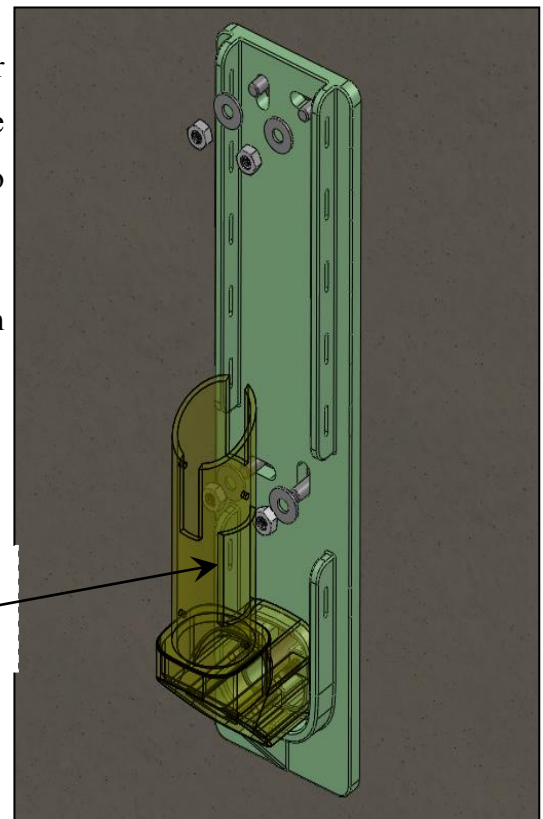


### Mount Bracket on the bolts

Now hang the Wall/Pole Mount Bracket on the anchor bolts embedded in the wall, while carefully running the wires through the Post. Ensure the wires run all the way to the access panel opening.

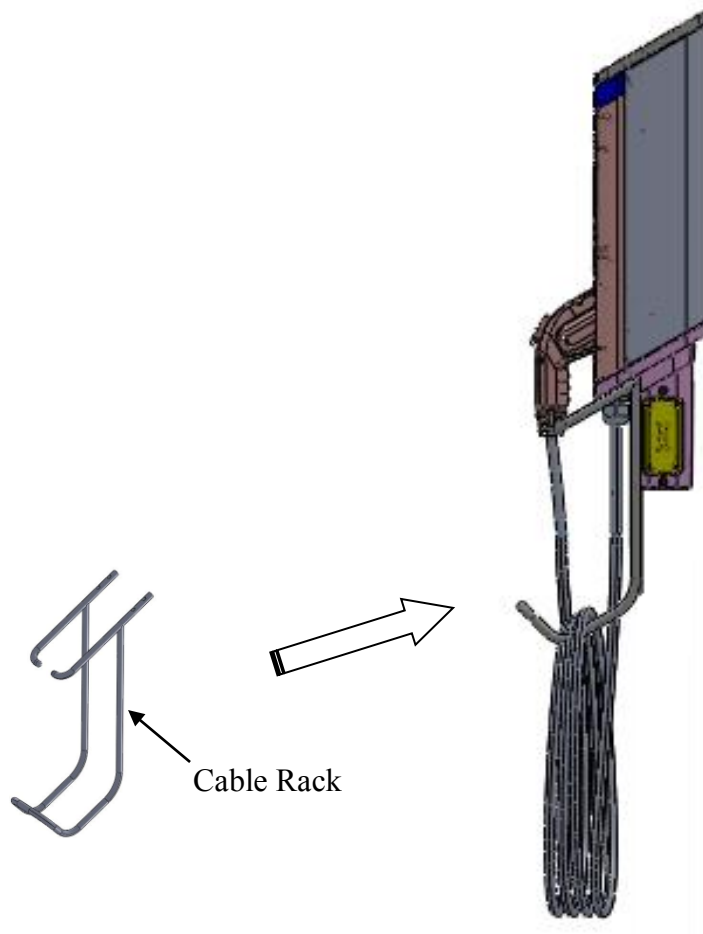
Finish attaching bracket by securing nuts on bolts with washers.

Access Panel  
& Wires



### Step 4 – Attach Cable Rack

Attach the cable rack to the underside of the charging station as illustrated, using the four (4) cable rack screws. Ensure the rack has been attached properly and can carry the weight of the cable that will be placed on the it.



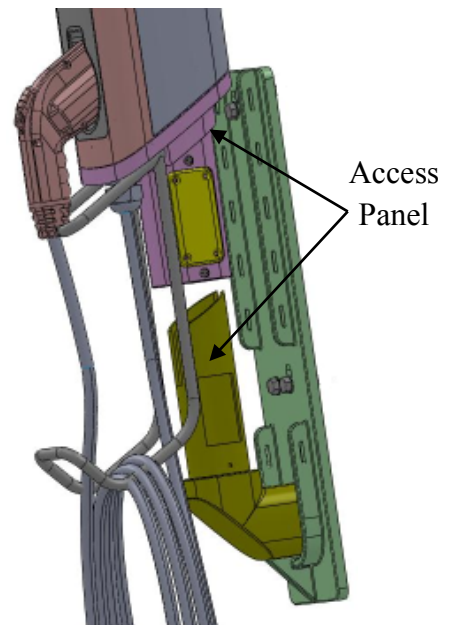
---

## Step 5 – Install the Charging Station Head Unit

Now we are ready to install the charging station.

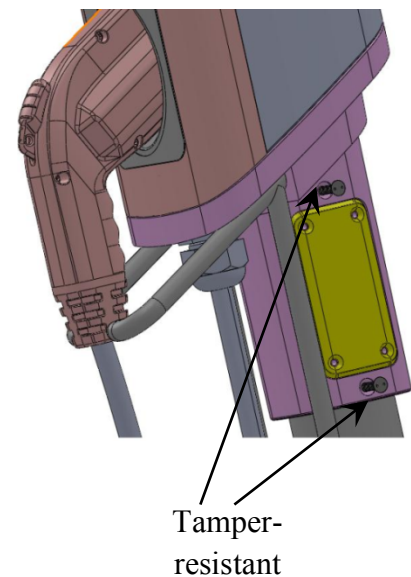
### Mount the charging station

Carefully insert the Charging Station Head Unit on top of the Wall Mount Bracket Post as shown in the diagram. The access panel on the Charging Station Head Unit should be aligned with the panel on the Wall/Pole Mount Bracket Post.



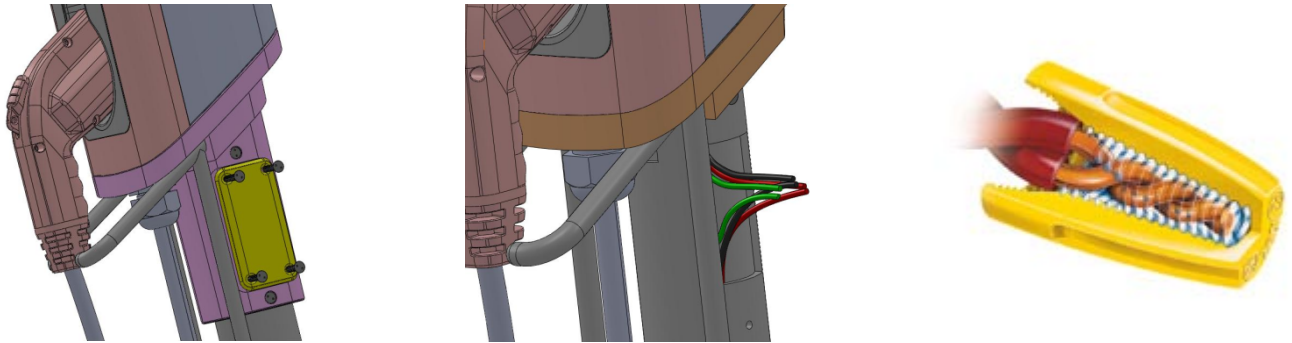
### Firmly fasten the charging station

Attach the Charging Station Head Unit to the Post using the four (4) tamper-resistant screws provided (two on each side). Ensure the charging station is plumb using a Level. Check that the Head Unit is now securely fastened to the Post.



### Connecting the wires

Open the Access Panel by removing the four (4) screws. Locate and access the wires inside. Carefully pull these wires a few inches outside of the access panel, to reveal 3 wires coming from the Charging Station Head Unit (for Level-2 charging stations the color codes are Red, Black and Green) and 3 wires from the Pedestal with the same color combination. Remove the insulation on each wire and prepare to connect those using wire-nuts.



Match the wires using the colors (Black-Black, Green-Green & Red-Red) and connect them using wire nuts as illustrated above. Once connected, slowly insert the wires into the device and replace the access panel cover using the screws previously removed.

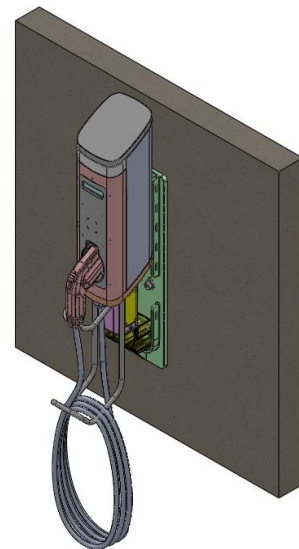
**Caution:** Refer to the wire color codes (Page 8) and strictly adhere to this convention while connecting the charging station and electrical supply wires. Incorrect wiring can lead to an electrical hazard.

### Power Up

#### Congratulations!

You have now finished the installation of the wall mounted ChargePro™ 620 Charging Station!

You can now power up the device.



---

# Chapter 4. Pole Mount

# 4

This chapter covers the installation of the ChargePro™ 620 Charging Stations on a pole mount.

## Manufacturer Supplied Materials for Installation

- The following items can be found in Box- 1
  - ChargePro™ 620 Charging Station Head Unit
  - Cable Rack and Cable Rack mounting screws (4ea)
  
- The following items can be found in Box-2
  - Wall/Pole Mount Bracket Plate
  - Wall/Pole Mount Bracket Post
  - Tamper-resistant screwdriver
  - Wall Mount Template (not needed for Pole Mount configuration)
  
- **The following Items are to be supplied by the Installer**
  - Straps to secure the Wall/Pole Mount Bracket Plate

## Installation Overview

1. Check the boxes for correct content
2. Pre-installation preparation
3. Install Wall/Pole Mount Bracket
4. Attach the Cable Rack
5. Install the Charging Station Head Unit

The steps are further detailed in the remainder of this chapter.

### Step 1 - Check boxes for correct content

The ChargePro™ 620 Charging Station boxes contain:

#### Box-1 - Charging Station

- ChargePro™ 620 Charging Station Head Unit



- Cable Rack



- Cable Rack mounting screws (4ea)





---

## Box-2 – Mounting Accessories

- ChargePro™ 620 Charging Station Wall/Pole Mount Bracket Plate



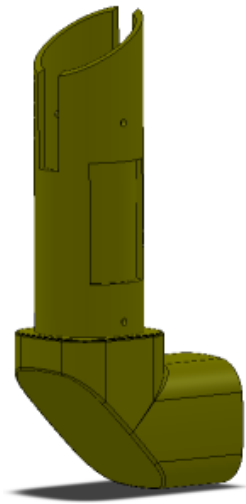
- Wall/Pole Mount Bracket anchor bolts (4ea)



- Wall/Pole Mount Bracket Post screws (3ea)



- Wall/Pole Mount Bracket Post



- Head Unit mounting screws with tamper-resistant screwdriver

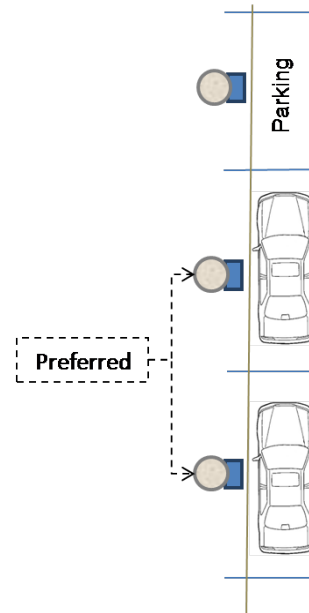


---

## Step 2 – Pre-installation preparation

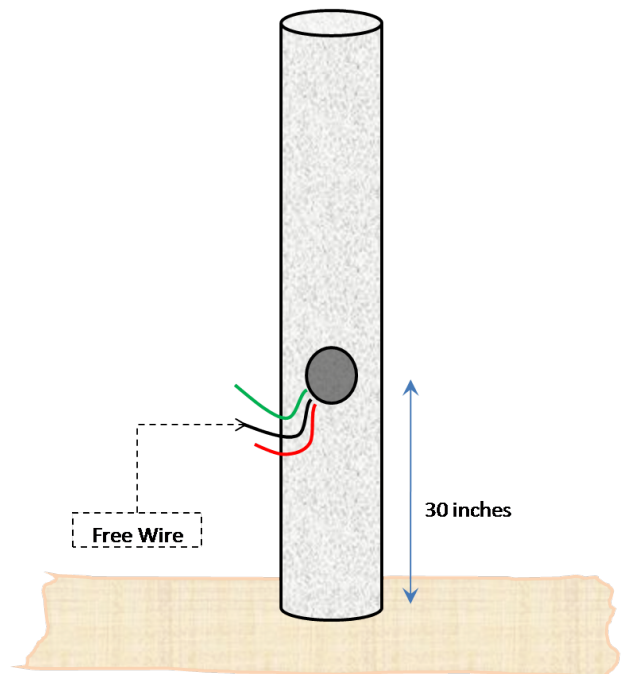
### Site selection

The charging station should be positioned such the distance between the charging station and electric vehicle is sufficient to minimize likelihood of damage (suggested min. 3 ft). Two alternatives are illustrated here.



### Prepare the pole

1. On the selected pole cut 1 inch diameter hole 30 inches from the ground level (Check local codes).
2. Run the wires from the distribution panel to the opening created on the pole as shown in illustration. Ensure that that free end of the wire extends at least 18” outside the pole.



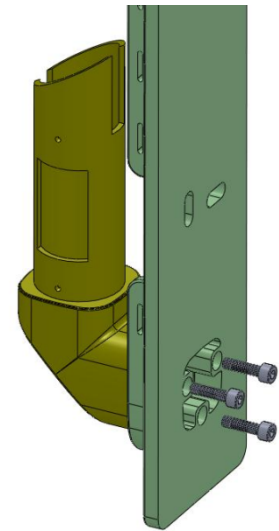
**NOTE:** Ideally, the conduit should run internally through the pole from the distribution panel to the wire-hole location. However, if external conduit is used, there is an opening on the side of the Wall/Pole Mount Bracket Post for the wires.

### Step 3 - Install the Wall/Pole Mount Bracket

#### Prepare the Wall/Pole Mount Bracket

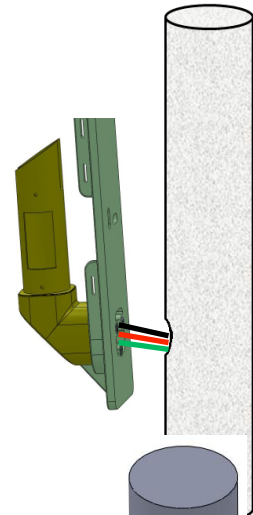
First, prepare the wall bracket to be bolted on to the pole.

Firmly attach the Wall/Pole Mount Bracket Plate to the Wall/Pole Mount Bracket Post using the Wall/Pole Mount Post screws (3ea). Make sure that the Post is securely attached to the Wall/Pole Mount Plate.



#### Pass the wires through the bracket

Run the wires through the Wall/Pole Bracket and Post.

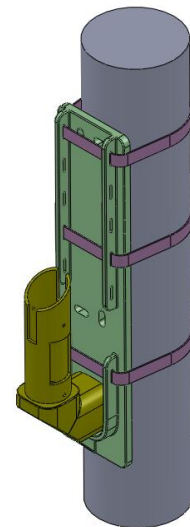


#### Strap the bracket to the pole

Now place the Wall/Pole Mount Bracket against the pole and secure it with at least 3 straps as illustrated.

Place a Level alongside the Wall/Pole Mount Bracket, to ensure the assembly is in an upright position.

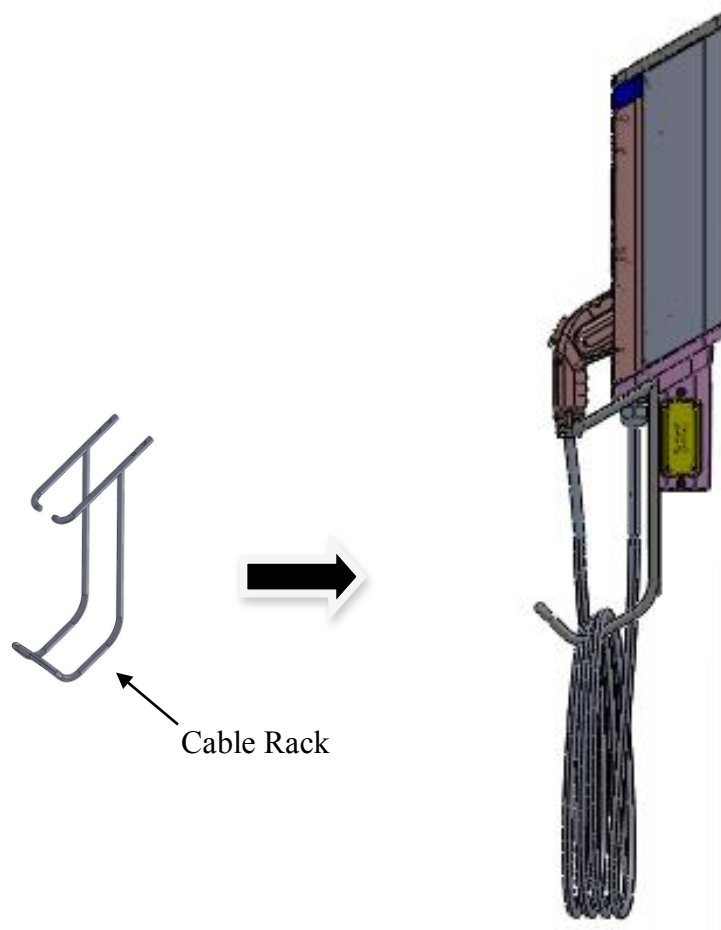
Now, fasten the straps to ensure that the bracket is secure.



---

#### Step 4 – Attach Cable Rack

Attach the Cable Rack to the underside of the charging station as illustrated, using the four (4) Cable Rack screws. Ensure the rack has been attached properly and can carry the weight of the cable that will be placed on the it.

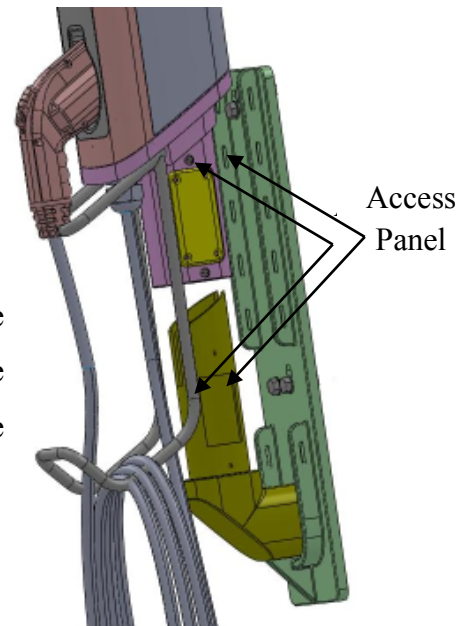


### Step 5 – Install the Charging Station

Now we are ready to install the charging station.

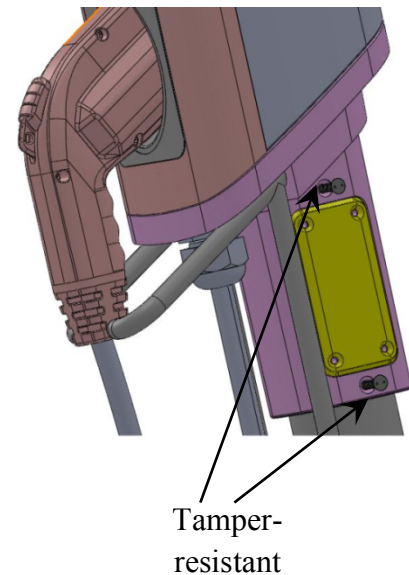
#### Mount the charging station

Carefully insert the Charging Station Head Unit on top of the Wall/Pole Mount Bracket Post as shown in the diagram. The access panel on the Charging Station Head Unit should be aligned with the panel on the Wall/Pole Mount Bracket Post.



#### Firmly fasten the charging station

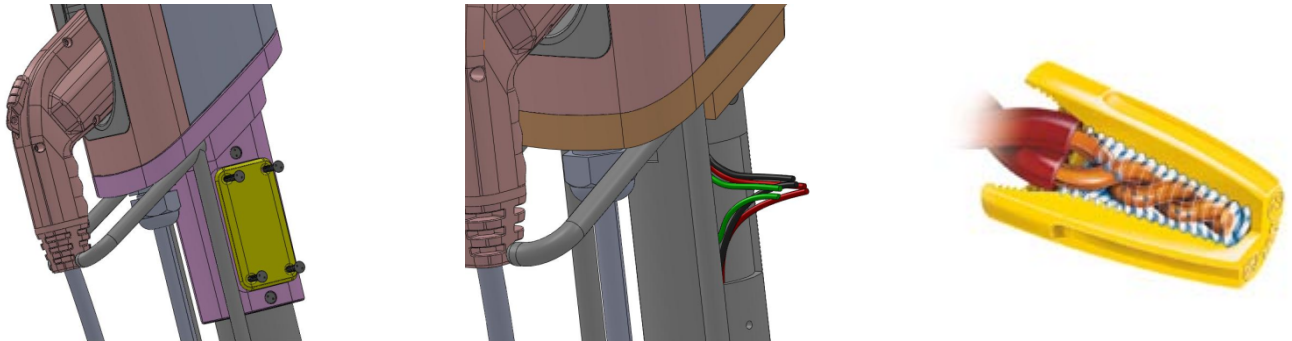
Attach the Charging Station Head Unit to the Post using the four (4) tamper-resistant screws provided (two on each side). Ensure the charging station is plumb using a Level. Check that the Head Unit is now securely fastened to the Post.



---

## Connecting the wires

Open the Access Panel by removing the four (4) screws. Locate and access the wires inside. Carefully pull these wires a few inches outside of the access panel, to reveal 3 wires coming from the Charging Station Head Unit (for Level-2 charging stations the color codes are Red, Black and Green) and 3 wires from the Pedestal with the same color combination. Remove the insulation on each wire and prepare to connect those using wire-nuts.



Match the wires using the colors (Black-Black, Green-Green & Red-Red) and connect them using wire nuts as illustrated above. Once connected, slowly insert the wires into the device and replace the access panel cover using the screws previously removed.

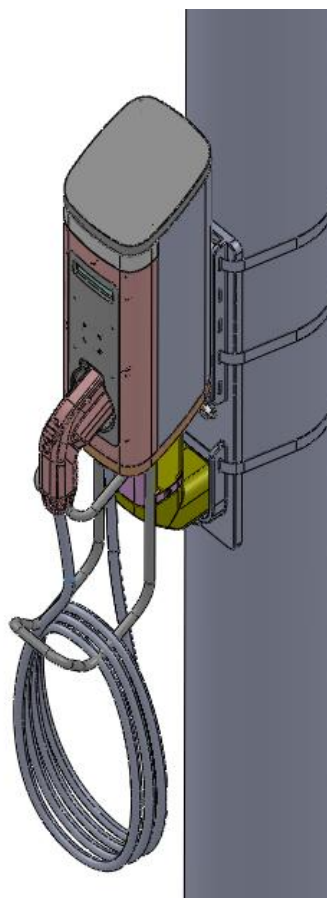
**Caution:** Refer to the wire color codes (*Page 8*) and strictly adhere to this convention while connecting the charging station and electrical supply wires. Incorrect wiring can lead to an electrical hazard.

### Power Up

#### **Congratulations!**

You have now finished the installation of the pole-mounted ChargePro™ 620 Charging Station!

You can now power up the device.

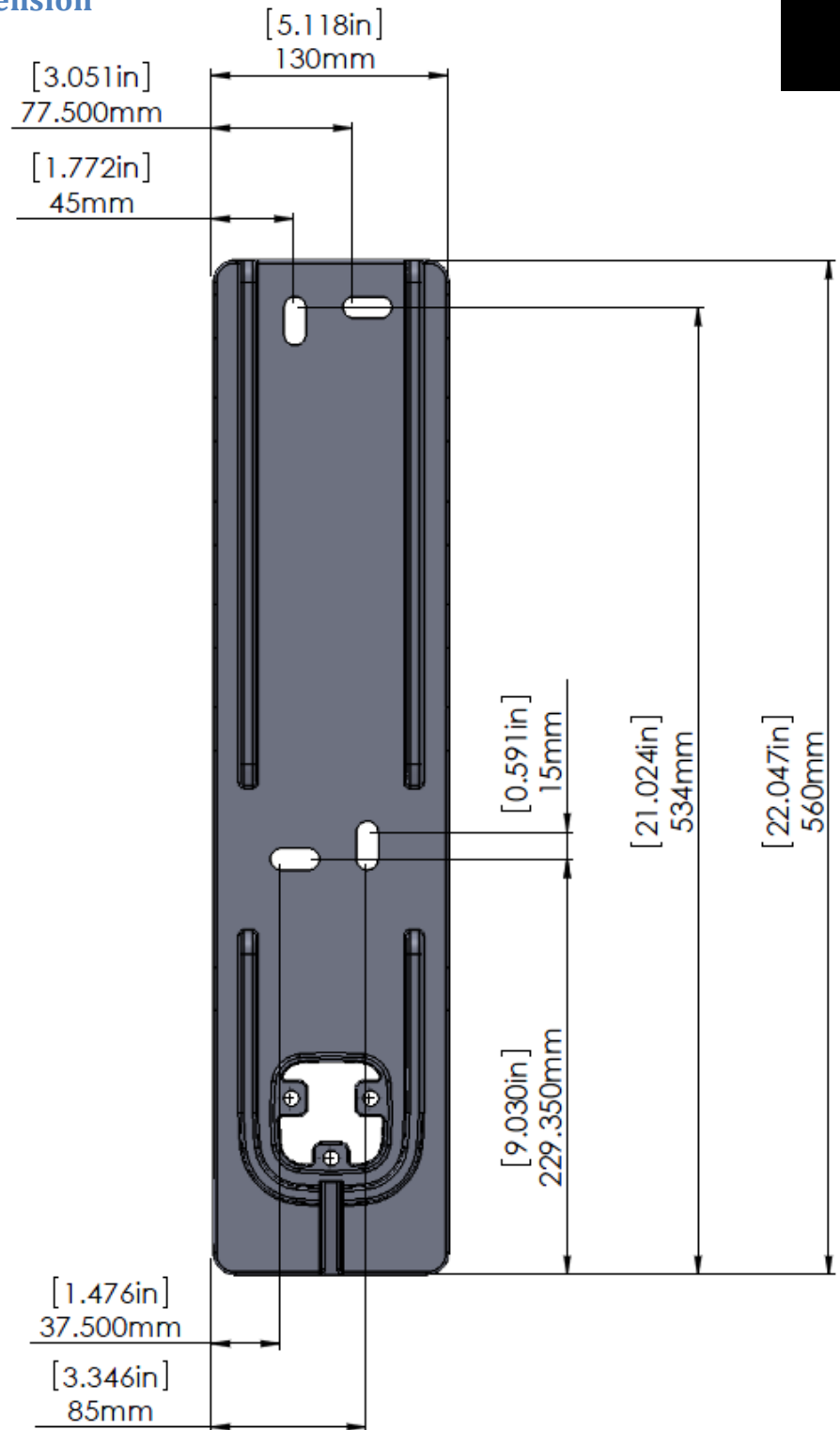




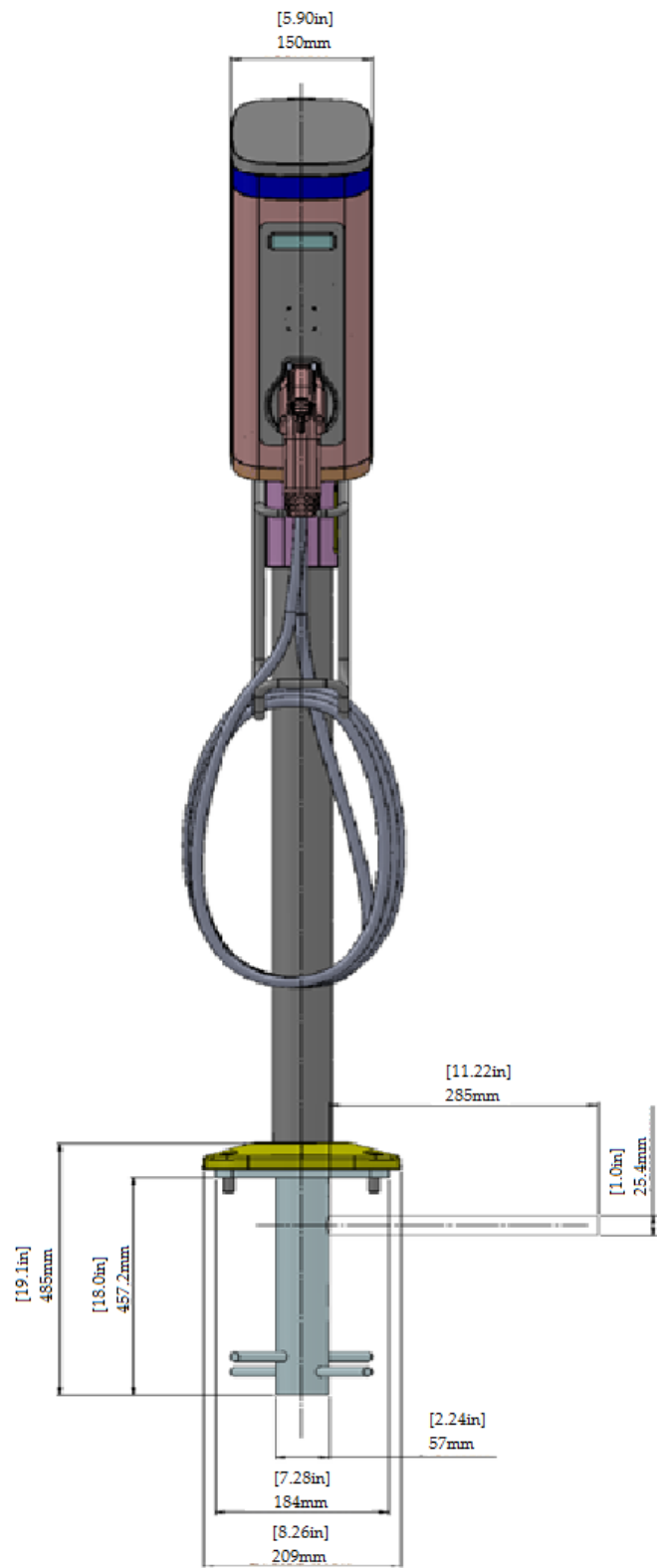
# A. Appendix

# A

## Wall Mount Bracket Dimension

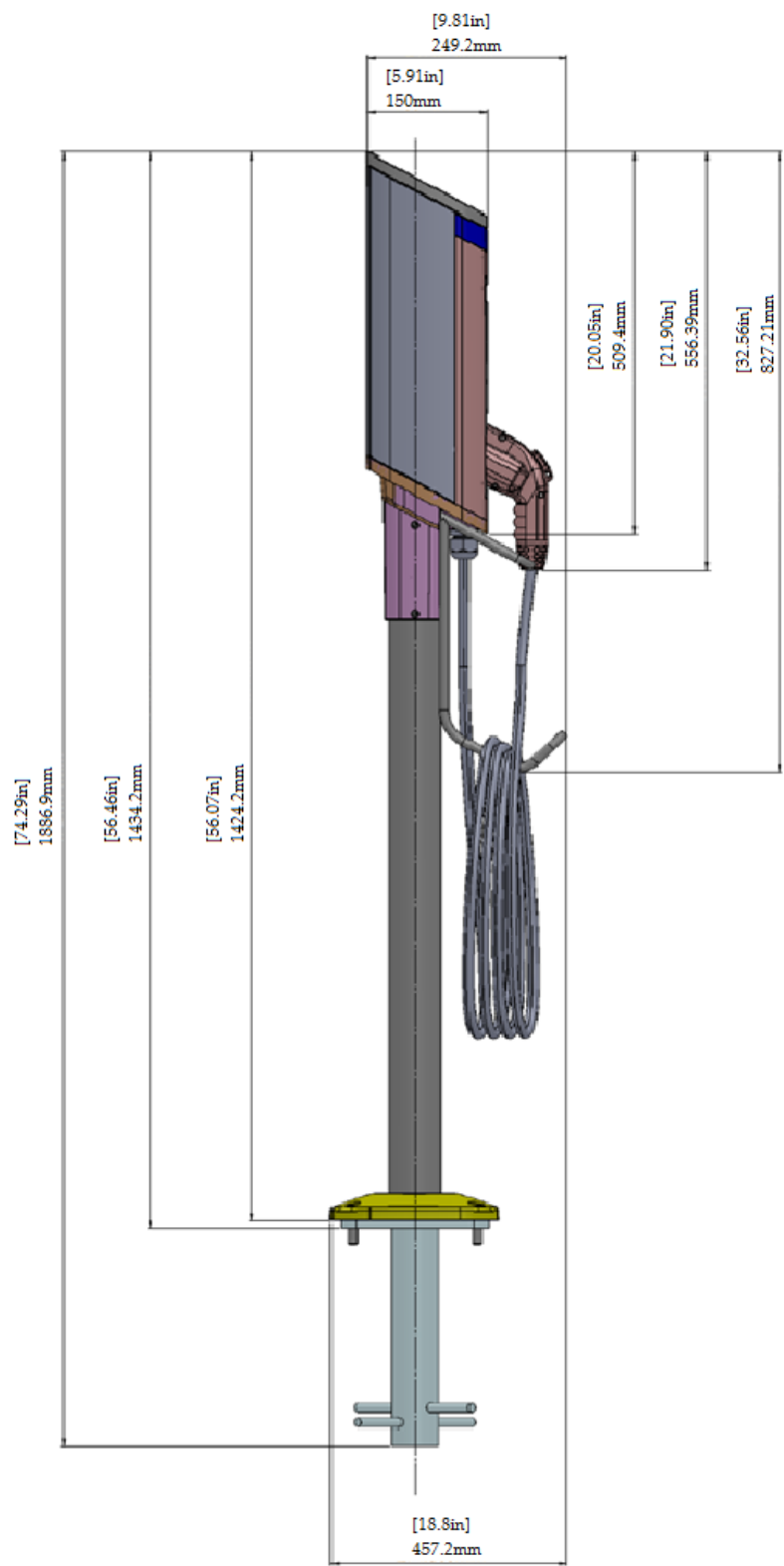


Pedestal mount dimensions (Front-view)



\*Approximated Values

Bollard mount dimensions (Side-view)



\*Approximated Values

### IMPORTANT INSTRUCTIONS FOR MAINTAINING ENVIRONMENTAL INTEGRITY

#### *Maintenance of the device*

The device does not need any regular maintenance and there are no customer serviceable parts inside. Any maintenance of the device needs to be done by a qualified manufacturer authorized service professional. When maintenance needs to be done please adhere to the following instructions.

- Turn off the power to the device.
- Open the access panel and disconnect all wires. For more explanation on access panel read chapter 2 or 3.
- Remove the screws used to mount the charger device on the Pedestal or Wall mount.
- Lift up the device and take it to an indoor facility, where you can proceed to open the bottom screws for maintenance.
- DO NOT open up the device out-doors, exposing the inner circuits to environmental hazard.

#### *Cleaning the device*

The device may be cleaned from time to time by following the instructions below:

- Use clean soft cloth along with mild detergent to wash the dirt off the device.
- Do not use high pressure water on the device to wash it. You may pour water gently from the top and use a wet/dry cloth to clean all the sides.
- Never use strong detergents or any other chemicals (Acids, petrol, thinner or any other solvent) on the device.
- Do not exert too much of pressure on the device while cleaning it.
- There is no need to open the device for cleaning up, so do not remove any of the screws.
- Do not use vacuum cleaners to clean the device.