

File : c:/idx3/SYSTEM/SARMEAS3/data/Normal/01080617_ZOOM.VLT
Start : 6-Aug-101 02:42:26 pm End : 6-Aug-101 02:52:11 pm

Radio Type : HYUNDAI
Model Number : TX-25B
Serial Number : 24
Frequency : 824.70 MHz
Peak Trans. Pwr : 0.350 W
Start Trans. Pwr : 0.350 W
Antenna Type : Helical
Antenna Posn. : Out
Phantom Type : Head
Phantom Posn. : Left Ear
Scan Type : ZOOM/SAR
Probe Name : PCTEST
Field Type : E Field
Orientation : 0 Degrees

Mixture Type = Brain
Mixture Dielectric Constant = 41.500
Mixture Conductivity = 0.900

Comment :
HYUNDAI TRI-MODE PHONE - CDMA MODE
CH 1013 25.4 dBm Conducted
HYUNDAI TRI-MODE PHONE

Robot : PCTEST

Probe Offset = 0.25 cm
Sensor Factor = 0.0108
Conversion Factor = 0.788

PCTEST Amplifier Channel Settings : 0.166 0.135 0.132

Max Location : X = 3.000, Y = -5.250, Z = 0.000 (cm) Value = 11.788

Measured Values (volts) =
1.125E-002 9.256E-003 8.025E-003 6.689E-003 5.727E-003 4.785E-003
4.048E-003 3.383E-003 2.979E-003 2.630E-003 2.413E-003 2.250E-003
2.099E-003 1.822E-003 1.564E-003 1.271E-003 9.323E-004 7.123E-004
5.363E-004 4.971E-004 5.417E-004

Calc. Voltage @ Surface (Vs) = 0.0133

Voltage @ 1.00 cm (Vt) = 0.0067

Ave. Voltage (Vs+Vt)/2 = 0.0100

Ave. SAR over 1 g (mW/g) = 0.7302

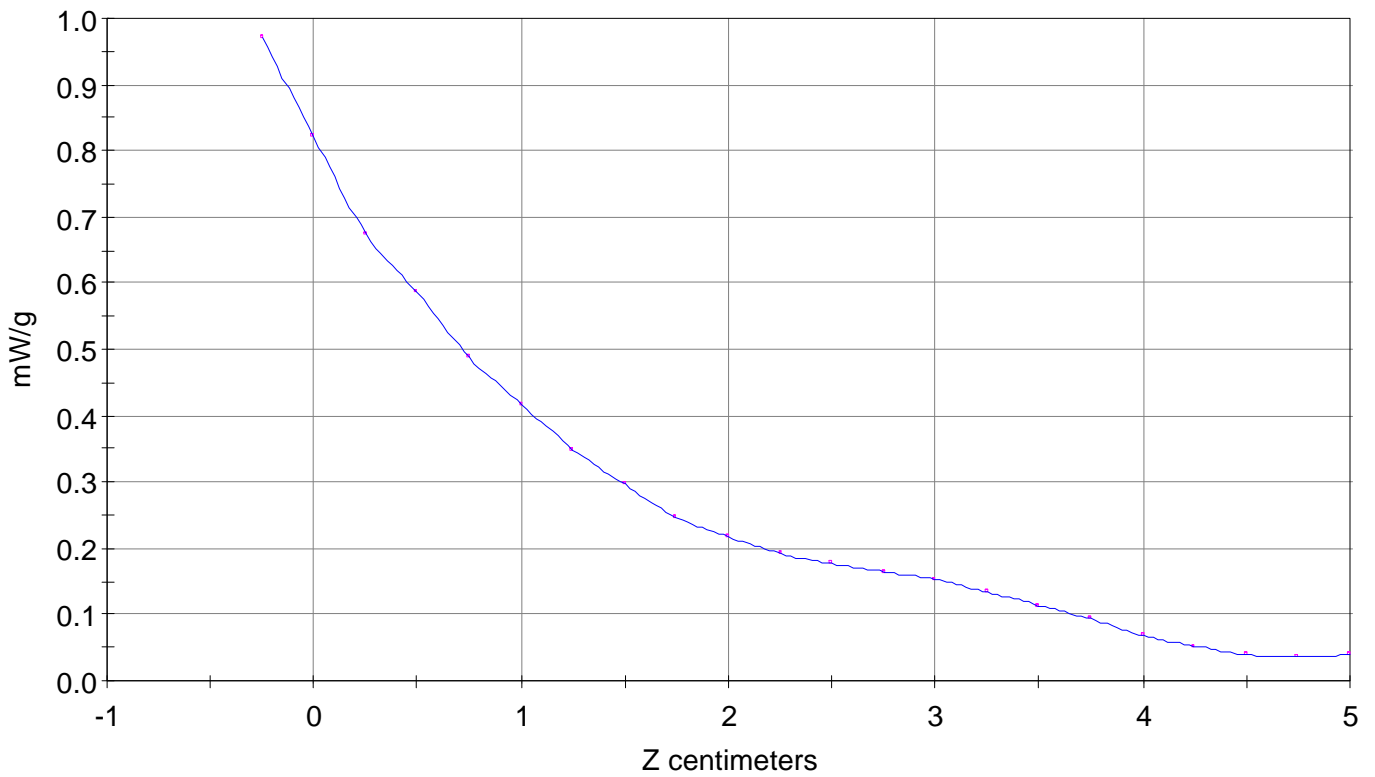
SAR Scan

File : 01080617_ZOOM

Start : 6-Aug-101 02:42:26 pm End : 6-Aug-101 02:52:11 pm

HYUNDAI/TX-25B/24;824.70MHz;W;Helical/Out;

Head/Left Ear;ZOOM/SAR;PCTEST/E Field/0 DegreesBrain/41.500/0.900

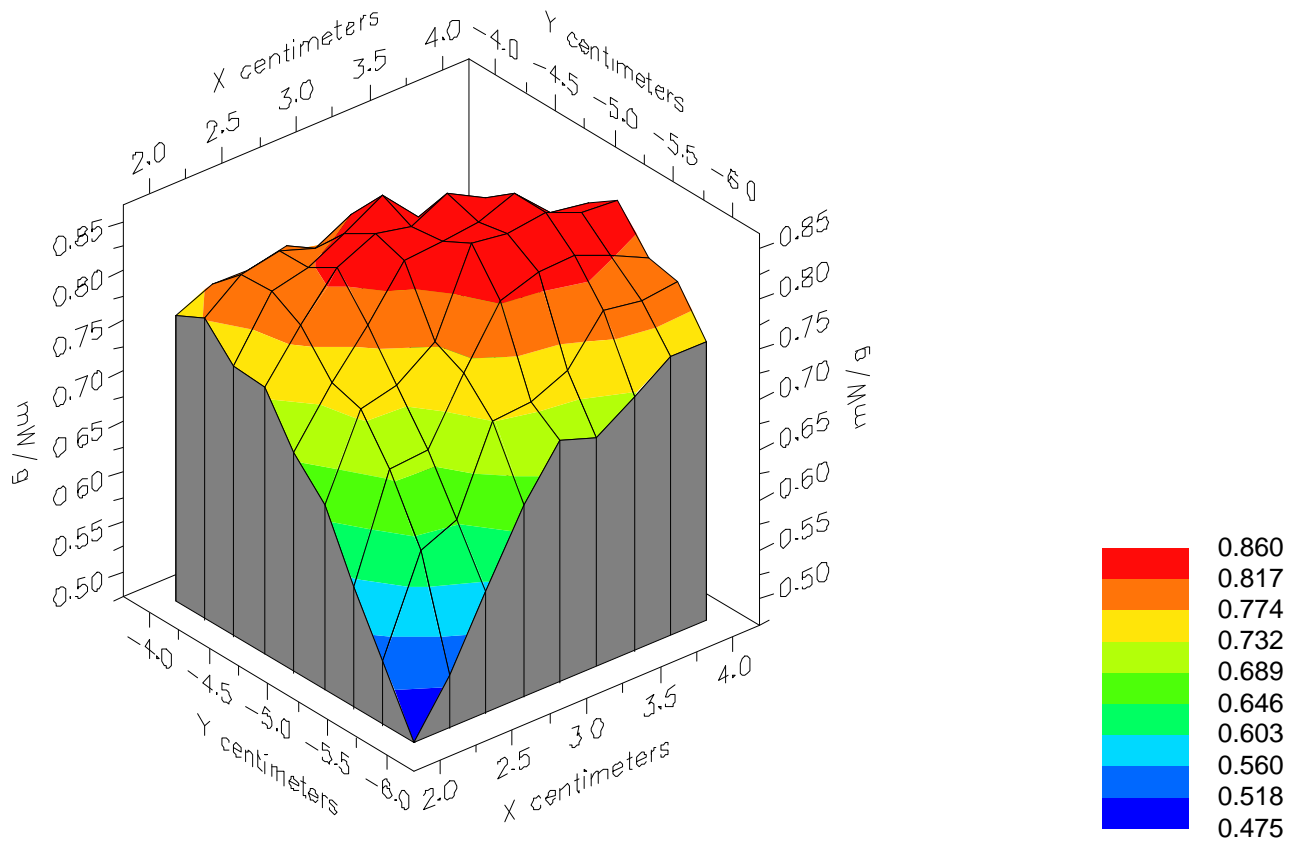


File : 01080617_ZOOM

Start : 6-Aug-101 02:42:26 pm End : 6-Aug-101 02:52:11 pm

HYUNDAI/TX-25B/24;824.70MHz;W;Helical/Out;

Head/Left Ear;ZOOM/SAR;PCTEST/E Field/0 DegreesBrain/41.500/0.900

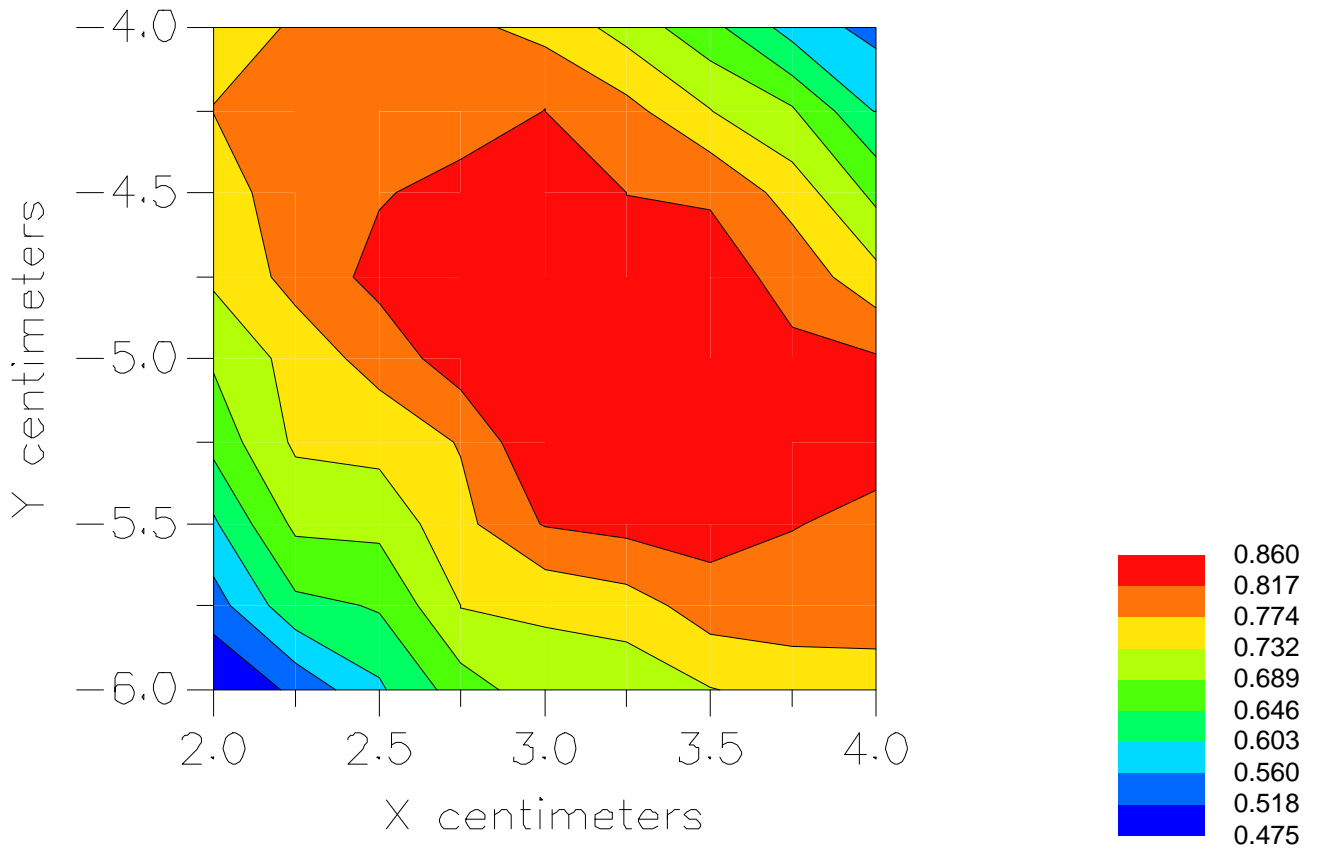


File : 01080617_ZOOM

Start : 6-Aug-101 02:42:26 pm End : 6-Aug-101 02:52:11 pm

HYUNDAI/TX-25B/24;824.70MHz;W;Helical/Out;

Head/Left Ear;ZOOM/SAR;PCTEST/E Field/0 DegreesBrain/41.500/0.900



File : c:/idx3/SYSTEM/SARMEAS3/data/Normal/01081706_ZOOM.VLT
Start : 17-Aug-101 11:32:16 am End : 17-Aug-101 11:40:59 am

Radio Type : HYUNDAI
Model Number : TX-25B
Serial Number : 24
Frequency : 836.49 MHz
Peak Trans. Pwr : 0.530 W
Start Trans. Pwr : 0.530 W
Antenna Type : Helical
Antenna Posn. : In
Phantom Type : Body
Phantom Posn. : Abdomen
Scan Type : ZOOM/SAR
Probe Name : PCTEST
Field Type : E Field
Orientation : 0 Degrees

Mixture Type = Muscle
Mixture Dielectric Constant = 56.100
Mixture Conductivity = 0.950

Comment :
HYUNDAI TRI-MODE PHONE - AMPS MODE
CH 0383 Conducted 27.2 dBm
HYUNDAI TRI-MODE PHONE - BODY SAR

Robot : PCTEST

Probe Offset = 0.25 cm
Sensor Factor = 0.0108
Conversion Factor = 0.894

PCTEST Amplifier Channel Settings : 0.166 0.135 0.132

Max Location : X = 2.000, Y = -0.250, Z = 0.000 (cm) Value = 4.183

Measured Values (volts) =
4.044E-003 3.366E-003 2.858E-003 2.469E-003 2.053E-003 1.755E-003
1.436E-003 1.177E-003 9.466E-004 8.038E-004 7.380E-004 6.963E-004
7.353E-004 7.590E-004 6.901E-004 5.592E-004 4.110E-004 3.103E-004
1.412E-004 7.979E-005 6.104E-005

Calc. Voltage @ Surface (Vs) = 0.0048

Voltage @ 1.00 cm (Vt) = 0.0025

Ave. Voltage (Vs+Vt)/2 = 0.0036

Ave. SAR over 1 g (mW/g) = 0.3012

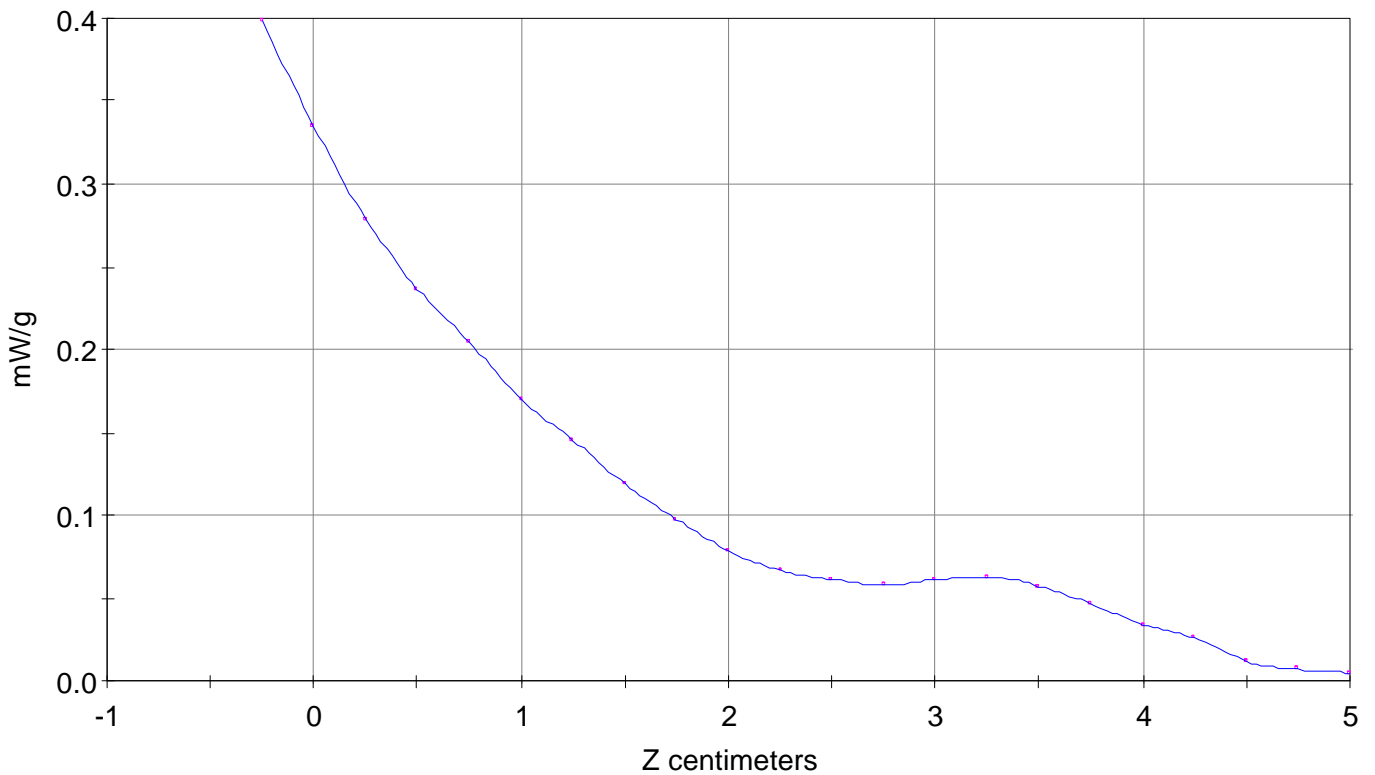
SAR Scan

File : 01081706_ZOOM

Start : 17-Aug-101 11:32:16 am End : 17-Aug-101 11:40:59 am

HYUNDAI/TX-25B/24;836.49MHz;W;Helical/In;

Body/Abdomen;ZOOM/SAR;PCTEST/E Field/0 DegreesMuscle/56.100/0.950

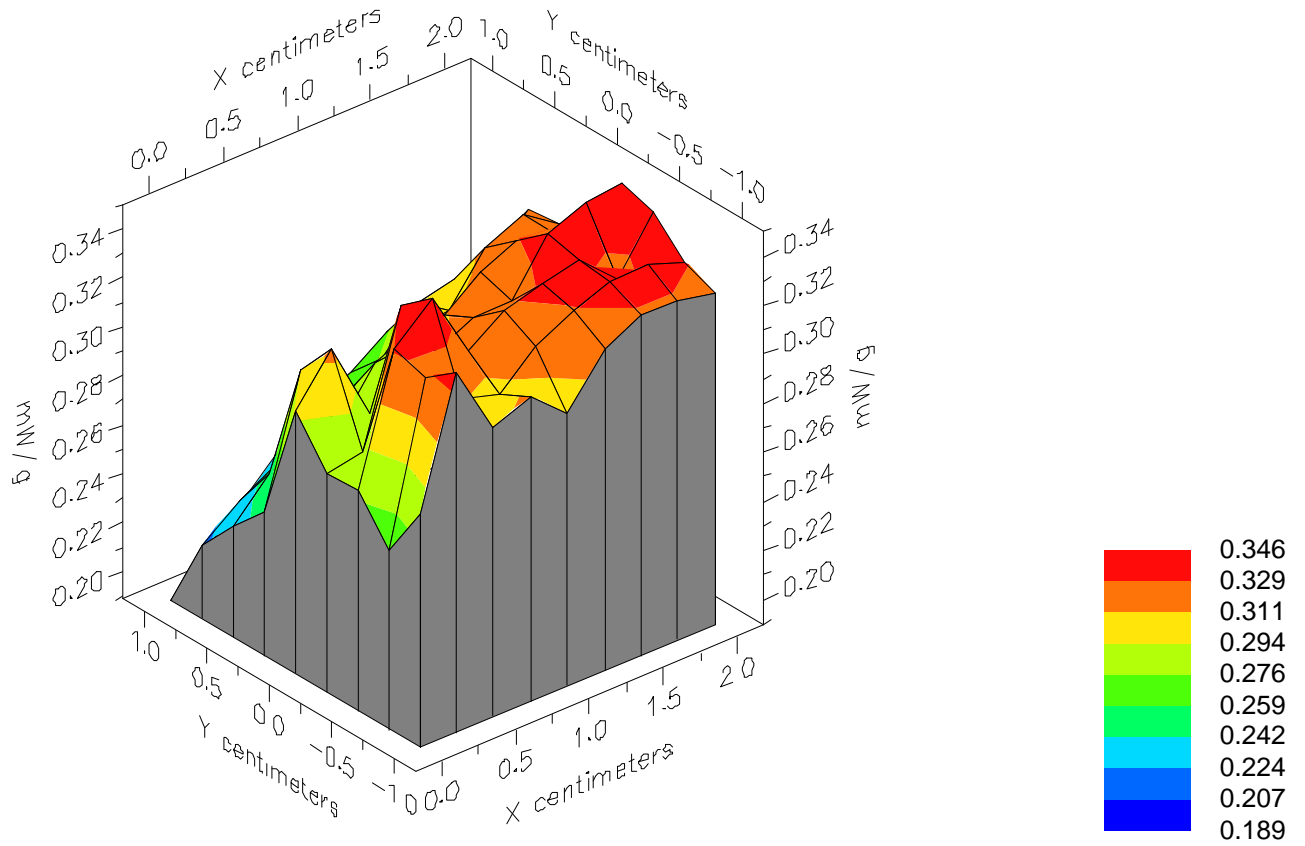


File : 01081706_ZOOM

Start : 17-Aug-101 11:32:16 am End : 17-Aug-101 11:40:59 am

HYUNDAI/TX-25B/24;836.49MHz;W;Helical/In;

Body/Abdomen;ZOOM/SAR;PCTEST/E Field/0 DegreesMuscle/56.100/0.950



File : 01081706_ZOOM

Start : 17-Aug-101 11:32:16 am End : 17-Aug-101 11:40:59 am

HYUNDAI/TX-25B/24;836.49MHz;W;Helical/In;

Body/Abdomen;ZOOM/SAR;PCTEST/E Field/0 DegreesMuscle/56.100/0.950

