

File : c:/idx3/SYSTEM/SARMEAS3/data/Normal/01100927_ZOOM.VLT
Start : 9-Oct-101 05:20:18 pm End : 9-Oct-101 05:21:12 pm

Radio Type : HYUNDAI
Model Number : TX-25B
Serial Number : 24
Frequency : 1851.25 MHz
Peak Trans. Pwr : 0.300 W
Start Trans. Pwr : 0.300 W
Antenna Type : Helical
Antenna Posn. : In
Phantom Type : Head
Phantom Posn. : Right Ear
Scan Type : SAR
Probe Name : PCTEST
Field Type : E Field
Orientation : 0 Degrees

Mixture Type = Brain
Mixture Dielectric Constant = 40.400
Mixture Conductivity = 1.620

Comment :
HYUNDAI TRI-MODE PHONE - PCS MODE
CH 0025 Conducted 24.8 dBm
HYUNDAI TRI-MODE PHONE

Robot : PCTEST

Probe Offset = 0.20 cm
Sensor Factor = 0.0108
Conversion Factor = 0.550

PCTEST Amplifier Channel Settings : 0.309 0.361 0.421

Max Location : X = -0.500, Y = -0.500, Z = 0.000 (cm) Value = 22.398

Measured Values (volts) =
1.271E-002 8.732E-003 6.377E-003 4.889E-003 3.870E-003 3.314E-003
2.773E-003 2.387E-003 2.110E-003 2.055E-003 1.975E-003 2.093E-003
1.989E-003 2.193E-003 2.235E-003 2.243E-003 2.450E-003 2.509E-003
2.502E-003 2.696E-003 2.820E-003

Calc. Voltage @ Surface (Vs) = 0.0168

Voltage @ 1.00 cm (Vt) = 0.0047

Ave. Voltage (Vs+Vt)/2 = 0.0107

Ave. SAR over 1 g (mW/g) = 0.5461

File : c:/idx3/SYSTEM/SARMEAS3/data/Normal/01100915_ZOOM.VLT
Start : 9-Oct-101 04:54:29 pm End : 9-Oct-101 05:04:33 pm

Radio Type : HYUNDAI
Model Number : TX-25B
Serial Number : 24
Frequency : 1851.25 MHz
Peak Trans. Pwr : 0.300 W
Start Trans. Pwr : 0.300 W
Antenna Type : Helical
Antenna Posn. : Out
Phantom Type : Head
Phantom Posn. : Right Ear
Scan Type : ZOOM/SAR
Probe Name : PCTEST
Field Type : E Field
Orientation : 0 Degrees

Mixture Type = Brain
Mixture Dielectric Constant = 40.400
Mixture Conductivity = 1.620

Comment :
HYUNDAI TRI-MODE PHONE - PCS MODE
CH 0025 Conducted 24.8 dBm
HYUNDAI TRI-MODE PHONE

Robot : PCTEST

Probe Offset = 0.20 cm
Sensor Factor = 0.0108
Conversion Factor = 0.550

PCTEST Amplifier Channel Settings : 0.309 0.361 0.421

Max Location : X = -0.500, Y = -0.500, Z = 0.000 (cm) Value = 22.398

Measured Values (volts) =
2.243E-002 1.520E-002 1.164E-002 9.056E-003 7.044E-003 5.683E-003
4.598E-003 3.793E-003 3.324E-003 2.919E-003 2.571E-003 2.430E-003
2.361E-003 2.256E-003 2.558E-003 2.466E-003 2.599E-003 2.537E-003
2.571E-003 2.913E-003 2.701E-003

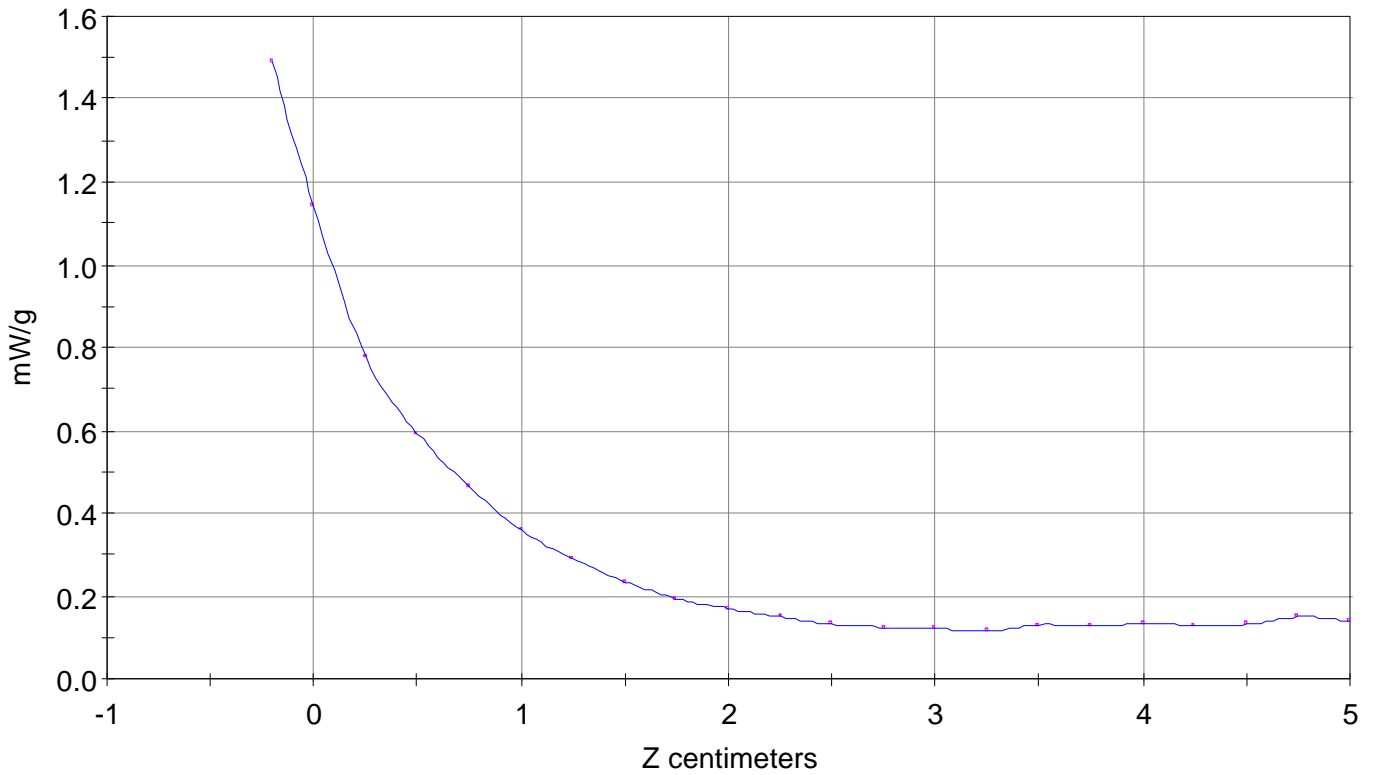
Calc. Voltage @ Surface (Vs) = 0.0292

Voltage @ 1.00 cm (Vt) = 0.0087

Ave. Voltage (Vs+Vt)/2 = 0.0189

Ave. SAR over 1 g (mW/g) = 0.9639

SAR Scan
File : 01100915_ZOOM
Start : 9-Oct-101 04:54:29 pm End : 9-Oct-101 05:04:33 pm
HYUNDAI/TX-25B/24;1851.25MHz;W;Helical/Out;
Head/Right Ear;ZOOM/SAR;PCTEST/E Field/0 DegreesBrain/40.400/1.620

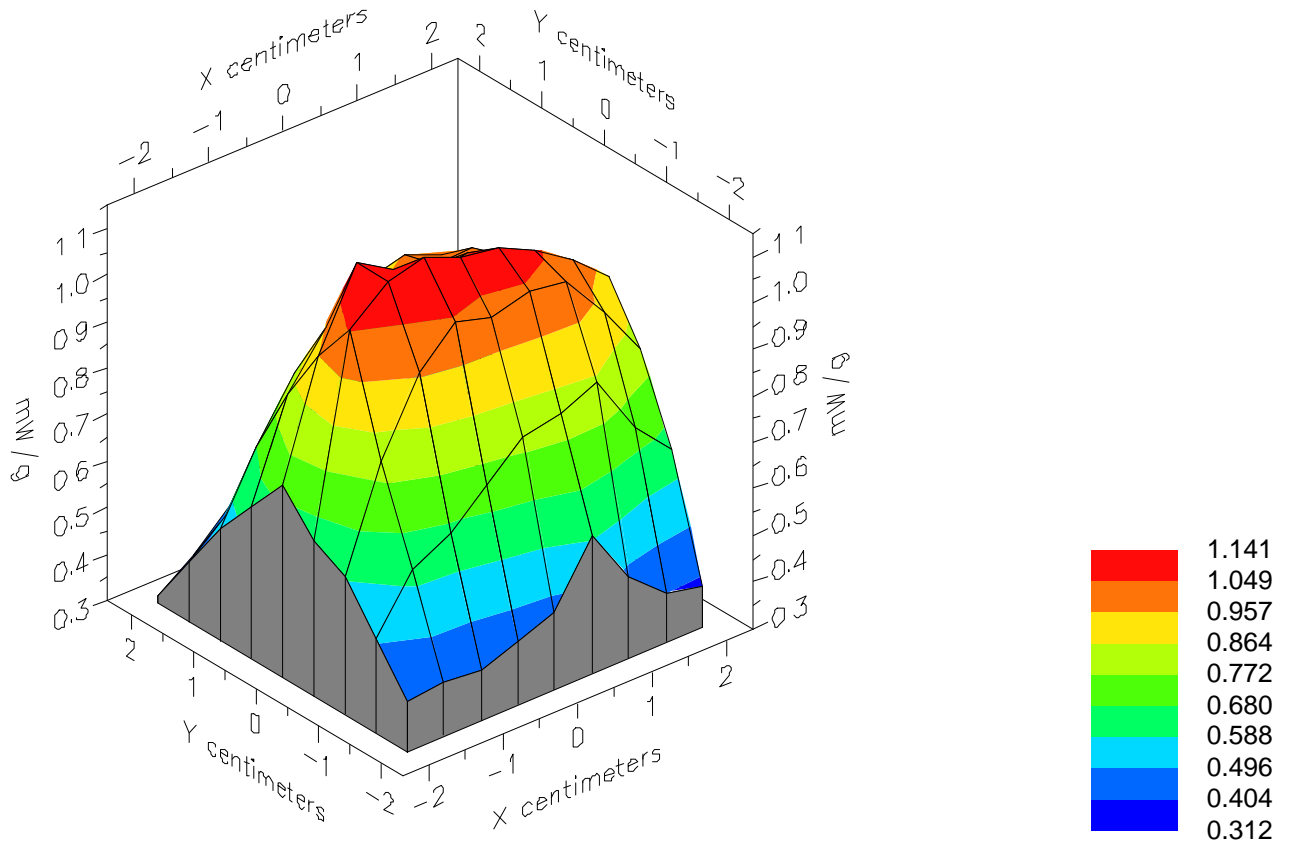


File : 01100915_ZOOM

Start : 9-Oct-101 04:54:29 pm End : 9-Oct-101 05:04:33 pm

HYUNDAI/TX-25B/24;1851.25MHz;W;Helical/Out;

Head/Right Ear;ZOOM/SAR;PCTEST/E Field/0 DegreesBrain/40.400/1.620

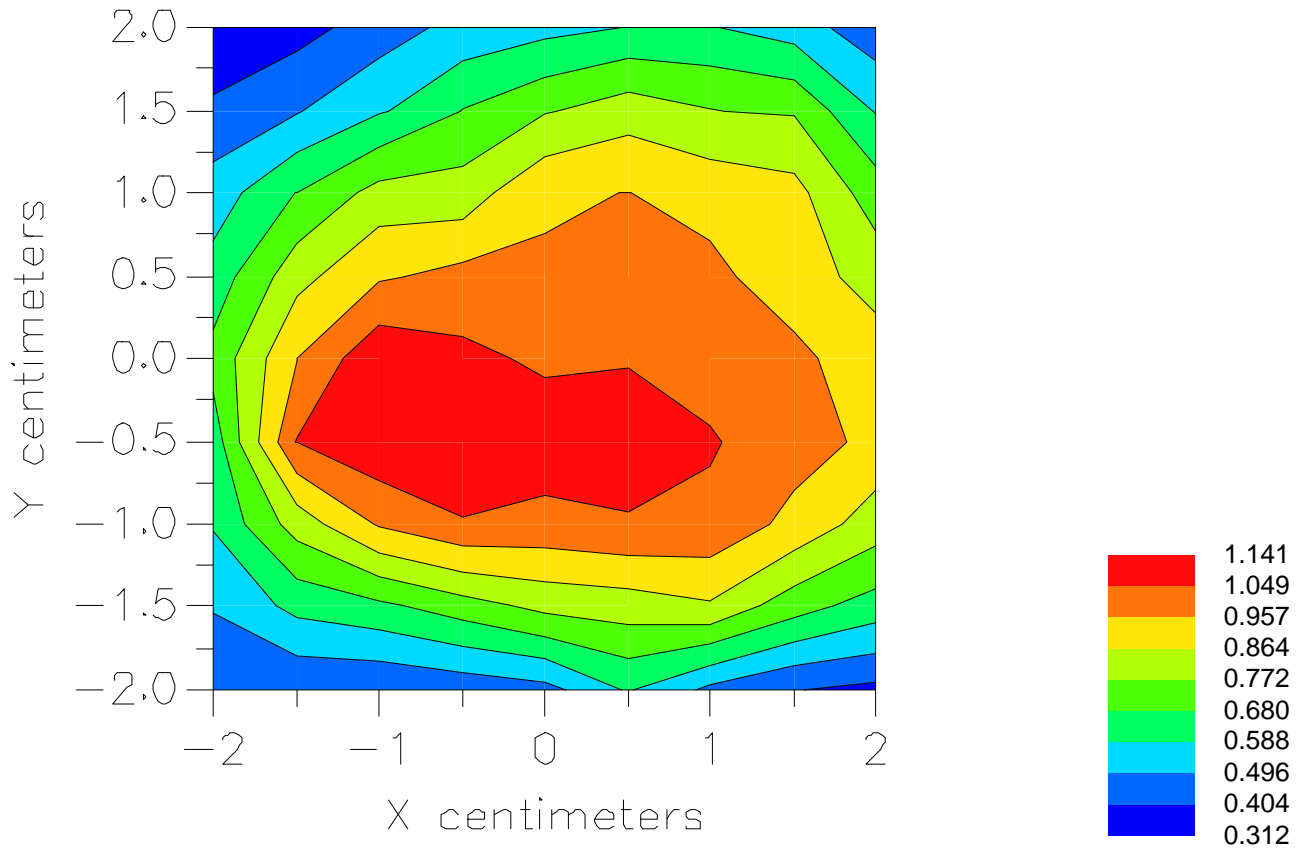


File : 01100915_ZOOM

Start : 9-Oct-101 04:54:29 pm End : 9-Oct-101 05:04:33 pm

HYUNDAI/TX-25B/24;1851.25MHz;W;Helical/Out;

Head/Right Ear;ZOOM/SAR;PCTEST/E Field/0 DegreesBrain/40.400/1.620



File : c:/idx3/SYSTEM/SARMEAS3/data/Normal/01100931_ZOOM.VLT
Start : 9-Oct-101 05:26:16 pm End : 9-Oct-101 05:27:10 pm

Radio Type : HYUNDAI
Model Number : TX-25B
Serial Number : 24
Frequency : 1880.00 MHz
Peak Trans. Pwr : 0.300 W
Start Trans. Pwr : 0.300 W
Antenna Type : Helical
Antenna Posn. : In
Phantom Type : Head
Phantom Posn. : Right Ear
Scan Type : SAR
Probe Name : PCTEST
Field Type : E Field
Orientation : 0 Degrees

Mixture Type = Brain
Mixture Dielectric Constant = 40.400
Mixture Conductivity = 1.620

Comment :
HYUNDAI TRI-MODE PHONE - PCS MODE
CH 0600 Conducted 24.8 dBm
HYUNDAI TRI-MODE PHONE

Robot : PCTEST

Probe Offset = 0.20 cm
Sensor Factor = 0.0108
Conversion Factor = 0.550

PCTEST Amplifier Channel Settings : 0.309 0.361 0.421

Max Location : X = -0.500, Y = -0.500, Z = 0.000 (cm) Value = 22.398

Measured Values (volts) =
1.326E-002 1.016E-002 7.127E-003 4.504E-003 4.369E-003 3.338E-003
1.533E-003 2.533E-003 2.269E-003 2.013E-003 1.932E-003 2.226E-003
2.210E-003 2.278E-003 2.392E-003 2.339E-003 2.529E-003 2.478E-003
2.588E-003 2.550E-003 2.736E-003

Calc. Voltage @ Surface (Vs) = 0.0170

Voltage @ 1.00 cm (Vt) = 0.0045

Ave. Voltage (Vs+Vt)/2 = 0.0107

Ave. SAR over 1 g (mW/g) = 0.5473

File : c:/idx3/SYSTEM/SARMEAS3/data/Normal/01100919_ZOOM.VLT
Start : 9-Oct-101 05:08:27 pm End : 9-Oct-101 05:09:21 pm

Radio Type : HYUNDAI
Model Number : TX-25B
Serial Number : 24
Frequency : 1880.00 MHz
Peak Trans. Pwr : 0.300 W
Start Trans. Pwr : 0.300 W
Antenna Type : Helical
Antenna Posn. : Out
Phantom Type : Head
Phantom Posn. : Right Ear
Scan Type : SAR
Probe Name : PCTEST
Field Type : E Field
Orientation : 0 Degrees

Mixture Type = Brain
Mixture Dielectric Constant = 40.400
Mixture Conductivity = 1.620

Comment :
HYUNDAI TRI-MODE PHONE - PCS MODE
CH 0600 Conducted 24.8 dBm
HYUNDAI TRI-MODE PHONE

Robot : PCTEST

Probe Offset = 0.20 cm
Sensor Factor = 0.0108
Conversion Factor = 0.550

PCTEST Amplifier Channel Settings : 0.309 0.361 0.421

Max Location : X = -0.500, Y = -0.500, Z = 0.000 (cm) Value = 22.398

Measured Values (volts) =
2.109E-002 1.434E-002 1.062E-002 7.813E-003 6.168E-003 4.790E-003
4.011E-003 3.241E-003 2.857E-003 2.633E-003 2.221E-003 2.202E-003
2.272E-003 2.352E-003 2.420E-003 2.352E-003 2.480E-003 2.524E-003
2.698E-003 2.751E-003 2.879E-003

Calc. Voltage @ Surface (Vs) = 0.0278

Voltage @ 1.00 cm (Vt) = 0.0075

Ave. Voltage (Vs+Vt)/2 = 0.0176

Ave. SAR over 1 g (mW/g) = 0.8974

File : c:/idx3/SYSTEM/SARMEAS3/data/Normal/01100924_ZOOM.VLT
Start : 9-Oct-101 05:16:21 pm End : 9-Oct-101 05:17:15 pm

Radio Type : HYUNDAI
Model Number : TX-25B
Serial Number : 24
Frequency : 1908.75 MHz
Peak Trans. Pwr : 0.300 W
Start Trans. Pwr : 0.300 W
Antenna Type : Helical
Antenna Posn. : In
Phantom Type : Head
Phantom Posn. : Right Ear
Scan Type : SAR
Probe Name : PCTEST
Field Type : E Field
Orientation : 0 Degrees

Mixture Type = Brain
Mixture Dielectric Constant = 40.400
Mixture Conductivity = 1.620

Comment :
HYUNDAI TRI-MODE PHONE - PCS MODE
CH 1175 Conducted 24.8 dBm
HYUNDAI TRI-MODE PHONE

Robot : PCTEST

Probe Offset = 0.20 cm
Sensor Factor = 0.0108
Conversion Factor = 0.550

PCTEST Amplifier Channel Settings : 0.309 0.361 0.421

Max Location : X = -0.500, Y = -0.500, Z = 0.000 (cm) Value = 22.398

Measured Values (volts) =
1.441E-002 9.816E-003 7.032E-003 5.425E-003 4.309E-003 3.348E-003
2.926E-003 2.466E-003 2.168E-003 2.110E-003 1.991E-003 2.083E-003
2.261E-003 2.239E-003 2.304E-003 2.341E-003 2.371E-003 2.549E-003
2.501E-003 2.548E-003 2.724E-003

Calc. Voltage @ Surface (Vs) = 0.0192

Voltage @ 1.00 cm (Vt) = 0.0052

Ave. Voltage (Vs+Vt)/2 = 0.0122

Ave. SAR over 1 g (mW/g) = 0.6213

File : c:/idx3/SYSTEM/SARMEAS3/data/Normal/01100916_ZOOM.VLT
Start : 9-Oct-101 05:06:02 pm End : 9-Oct-101 05:06:55 pm

Radio Type : HYUNDAI
Model Number : TX-25B
Serial Number : 24
Frequency : 1908.75 MHz
Peak Trans. Pwr : 0.300 W
Start Trans. Pwr : 0.300 W
Antenna Type : Helical
Antenna Posn. : Out
Phantom Type : Head
Phantom Posn. : Right Ear
Scan Type : SAR
Probe Name : PCTEST
Field Type : E Field
Orientation : 0 Degrees

Mixture Type = Brain
Mixture Dielectric Constant = 40.400
Mixture Conductivity = 1.620

Comment :
HYUNDAI TRI-MODE PHONE
CH 1175 Conducted 24.8 dBm
HYUNDAI TRI-MODE PHONE

Robot : PCTEST

Probe Offset = 0.20 cm
Sensor Factor = 0.0108
Conversion Factor = 0.550

PCTEST Amplifier Channel Settings : 0.309 0.361 0.421

Max Location : X = -0.500, Y = -0.500, Z = 0.000 (cm) Value = 22.398

Measured Values (volts) =
1.864E-002 1.284E-002 9.410E-003 7.246E-003 5.640E-003 4.561E-003
3.658E-003 3.123E-003 2.716E-003 2.453E-003 2.212E-003 2.364E-003
2.289E-003 2.247E-003 2.440E-003 2.425E-003 2.483E-003 2.420E-003
2.664E-003 2.774E-003 2.726E-003

Calc. Voltage @ Surface (Vs) = 0.0245

Voltage @ 1.00 cm (Vt) = 0.0069

Ave. Voltage (Vs+Vt)/2 = 0.0157

Ave. SAR over 1 g (mW/g) = 0.8004

File : c:/idx3/SYSTEM/SARMEAS3/data/Normal/01102205_ZOOM.VLT
Start : 22-Oct-101 11:31:19 am End : 22-Oct-101 11:40:51 am

Radio Type : HYUNDAI
Model Number : TX-25B
Serial Number : 24
Frequency : 1851.25 MHz
Peak Trans. Pwr : 0.300 W
Start Trans. Pwr : 0.300 W
Antenna Type : Helical
Antenna Posn. : Out
Phantom Type : Head
Phantom Posn. : Left Ear
Scan Type : ZOOM/SAR
Probe Name : PCTEST
Field Type : E Field
Orientation : 0 Degrees

Mixture Type = Brain
Mixture Dielectric Constant = 40.400
Mixture Conductivity = 1.620

Comment :
HYUNDAI TRI-MODE PHONE - PCS MODE
CH 0025 Conducted 24.8 dBm
HYUNDAI TRI-MODE PHONE - TILT

Robot : PCTEST

Probe Offset = 0.20 cm
Sensor Factor = 0.0108
Conversion Factor = 0.550

PCTEST Amplifier Channel Settings : 0.309 0.361 0.421

Max Location : X = -1.000, Y = -2.500, Z = 0.000 (cm) Value = 22.685

Measured Values (volts) =
2.154E-002 1.595E-002 1.161E-002 8.332E-003 6.349E-003 4.616E-003
3.835E-003 2.762E-003 2.157E-003 2.070E-003 1.544E-003 1.268E-003
8.393E-004 1.236E-003 9.524E-004 1.001E-003 4.782E-004 9.787E-004
7.828E-004 1.093E-003 9.979E-004

Calc. Voltage @ Surface (Vs) = 0.0276

Voltage @ 1.00 cm (Vt) = 0.0079

Ave. Voltage (Vs+Vt)/2 = 0.0178

Ave. SAR over 1 g (mW/g) = 0.9043

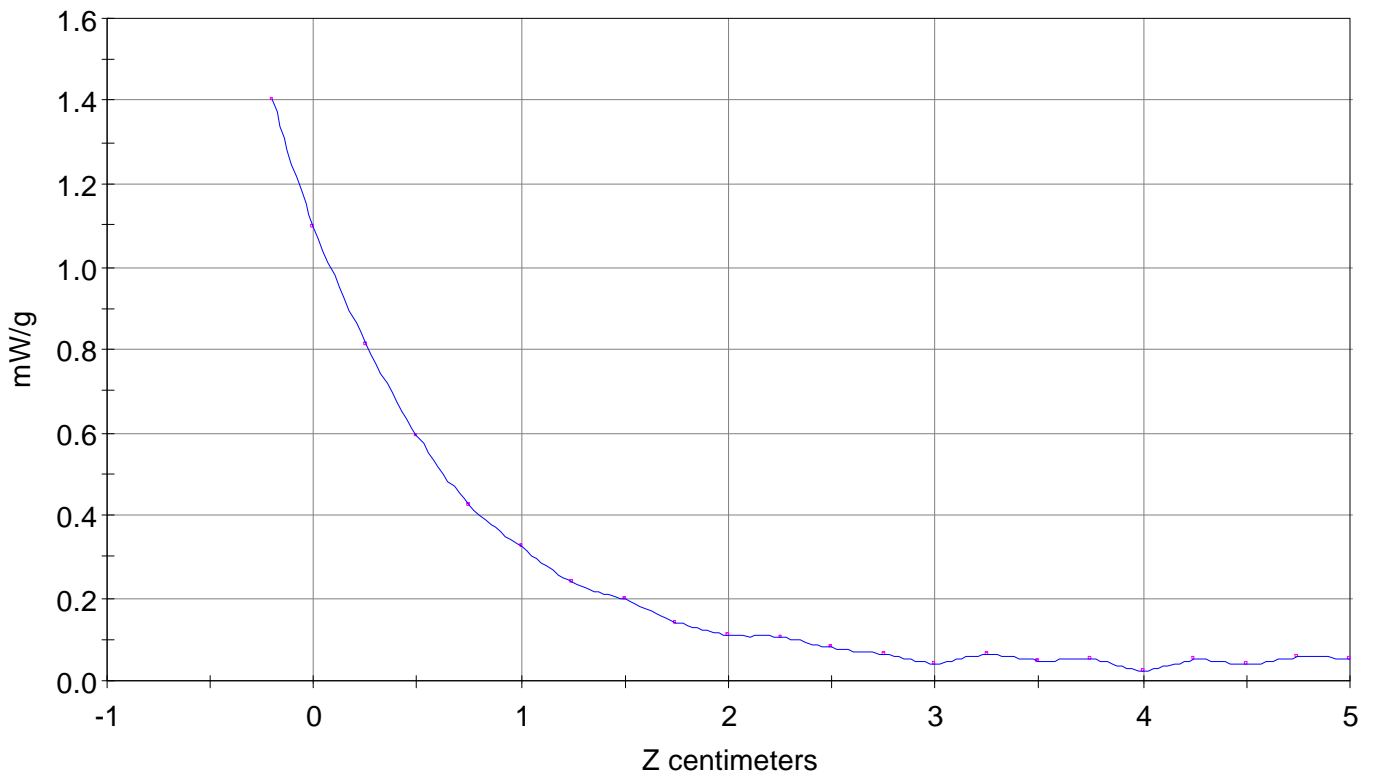
SAR Scan

File : 01102205_ZOOM

Start : 22-Oct-101 11:31:19 am End : 22-Oct-101 11:40:51 am

HYUNDAI/TX-25B/24;1851.25MHz;W;Helical/Out;

Head/Left Ear;ZOOM/SAR;PCTEST/E Field/0 DegreesBrain/40.400/1.620

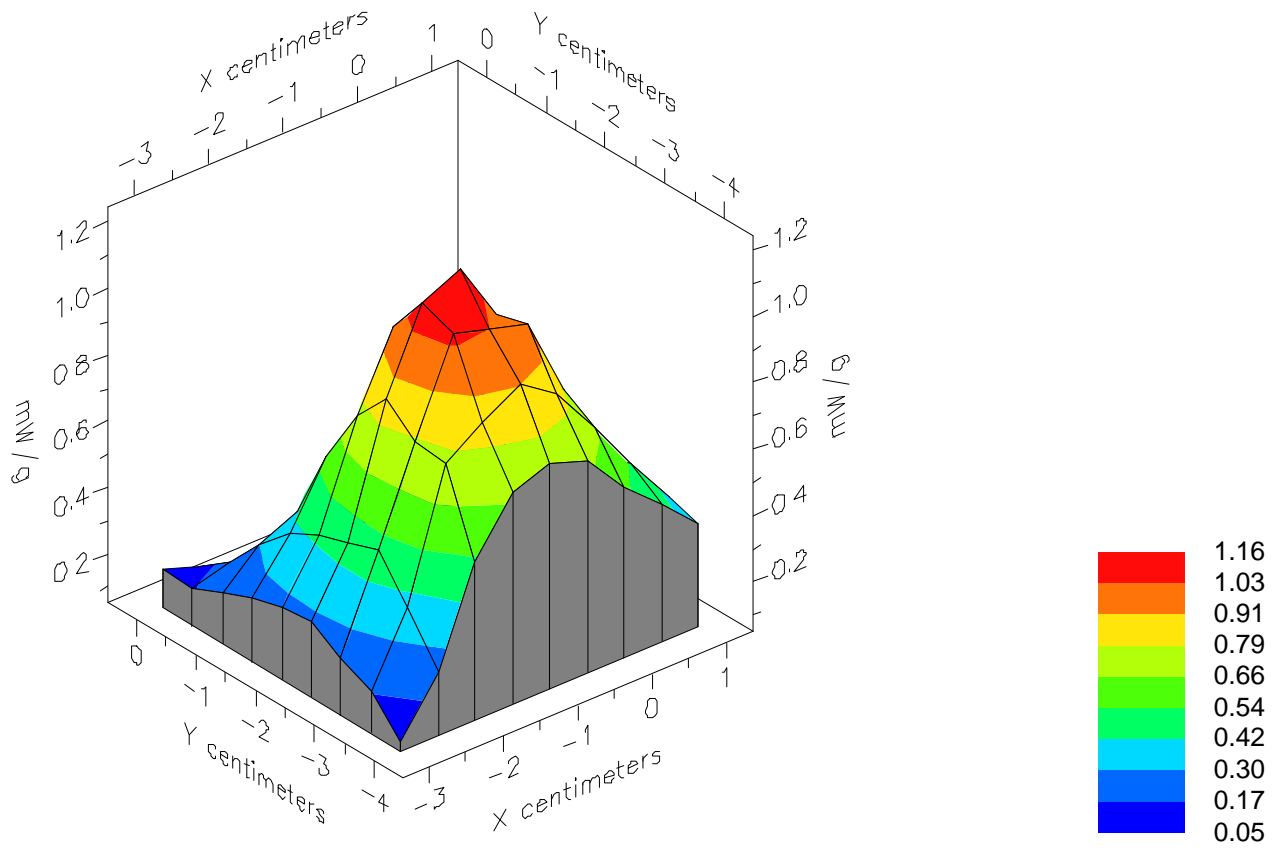


File : 01102205_ZOOM

Start : 22-Oct-101 11:31:19 am End : 22-Oct-101 11:40:51 am

HYUNDAI/TX-25B/24;1851.25MHz;W;Helical/Out;

Head/Left Ear;ZOOM/SAR;PCTEST/E Field/0 DegreesBrain/40.400/1.620

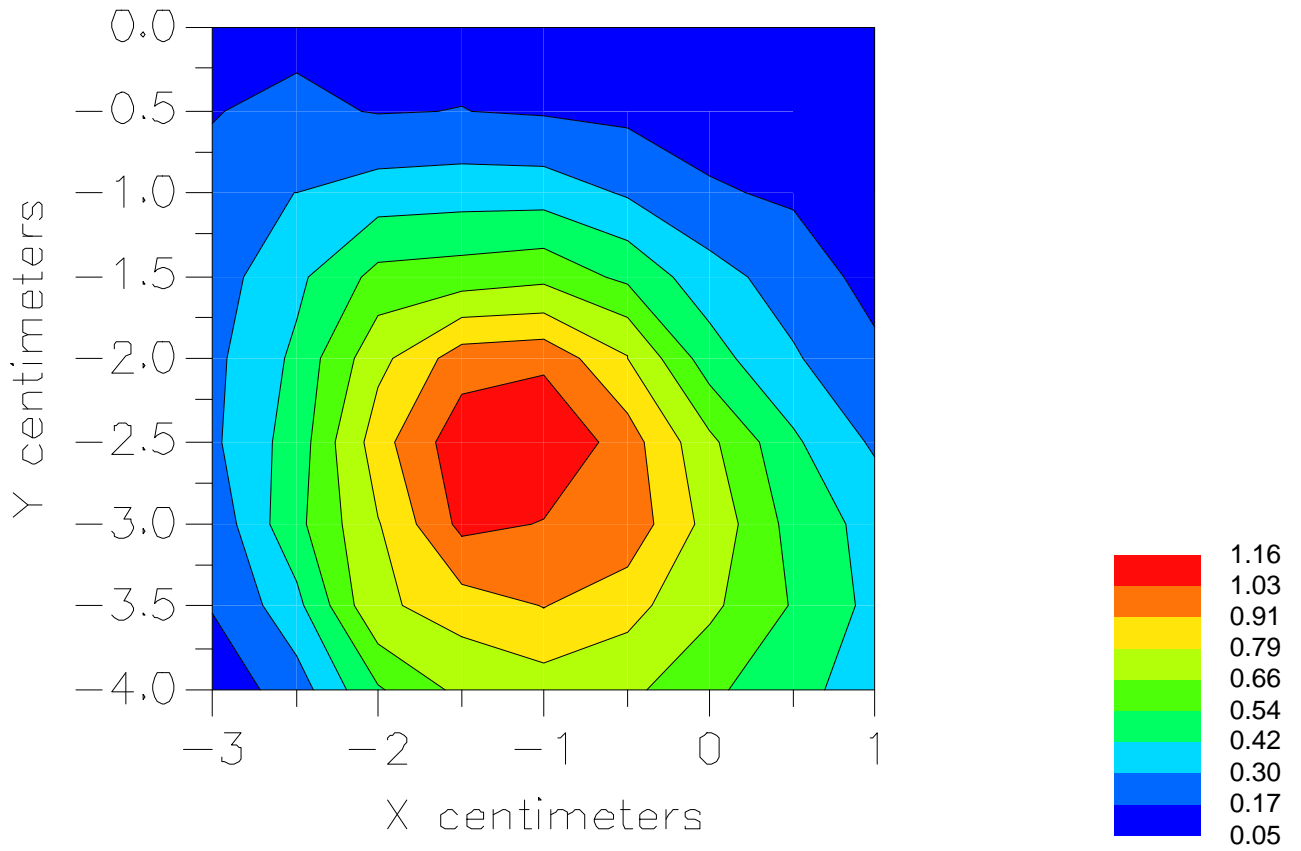


File : 01102205_ZOOM

Start : 22-Oct-101 11:31:19 am End : 22-Oct-101 11:40:51 am

HYUNDAI/TX-25B/24;1851.25MHz;W;Helical/Out;

Head/Left Ear;ZOOM/SAR;PCTEST/E Field/0 DegreesBrain/40.400/1.620



File : c:/idx3/SYSTEM/SARMEAS3/data/Normal/01102208_ZOOM.VLT
Start : 22-Oct-101 12:27:44 pm End : 22-Oct-101 12:37:19 pm

Radio Type : HYUNDAI
Model Number : TX-25B
Serial Number : 24
Frequency : 824.04 MHz
Peak Trans. Pwr : 0.530 W
Start Trans. Pwr : 0.530 W
Antenna Type : Helical
Antenna Posn. : Out
Phantom Type : Head
Phantom Posn. : Left Ear
Scan Type : ZOOM/SAR
Probe Name : PCTEST
Field Type : E Field
Orientation : 0 Degrees

Mixture Type = Brain
Mixture Dielectric Constant = 41.500
Mixture Conductivity = 0.900

Comment :
HYUNDAI TRI-MODE PHONE - AMPS MODE
CH 0991 Conducted 27.2 dBm
HYUNDAI TRI-MODE PHONE - TILT

Robot : PCTEST

Probe Offset = 0.20 cm
Sensor Factor = 0.0108
Conversion Factor = 0.325

PCTEST Amplifier Channel Settings : 0.239 0.278 0.294

Max Location : X = -1.500, Y = -3.000, Z = 0.000 (cm) Value = 28.629

Measured Values (volts) =
2.591E-002 2.016E-002 1.650E-002 1.442E-002 1.234E-002 1.094E-002
9.402E-003 8.294E-003 7.097E-003 5.919E-003 5.122E-003 3.999E-003
3.448E-003 2.957E-003 2.778E-003 2.371E-003 2.185E-003 2.646E-003
2.490E-003 2.529E-003 2.269E-003

Calc. Voltage @ Surface (Vs) = 0.0310

Voltage @ 1.00 cm (Vt) = 0.0140

Ave. Voltage (Vs+Vt)/2 = 0.0225

Ave. SAR over 1 g (mW/g) = 0.6777

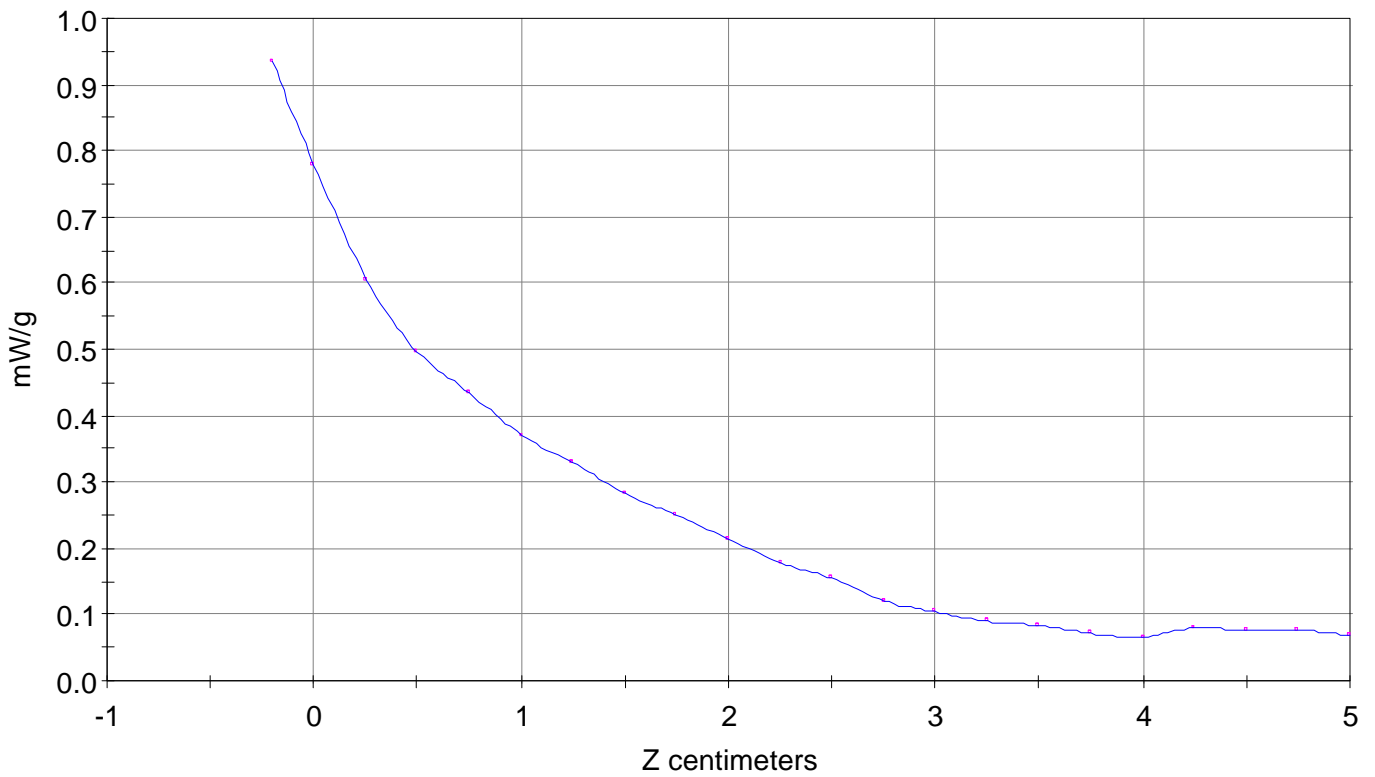
SAR Scan

File : 01102208_ZOOM

Start : 22-Oct-101 12:27:44 pm End : 22-Oct-101 12:37:19 pm

HYUNDAI/TX-25B/24;824.04MHz;W;Helical/Out;

Head/Left Ear;ZOOM/SAR;PCTEST/E Field/0 DegreesBrain/41.500/0.900

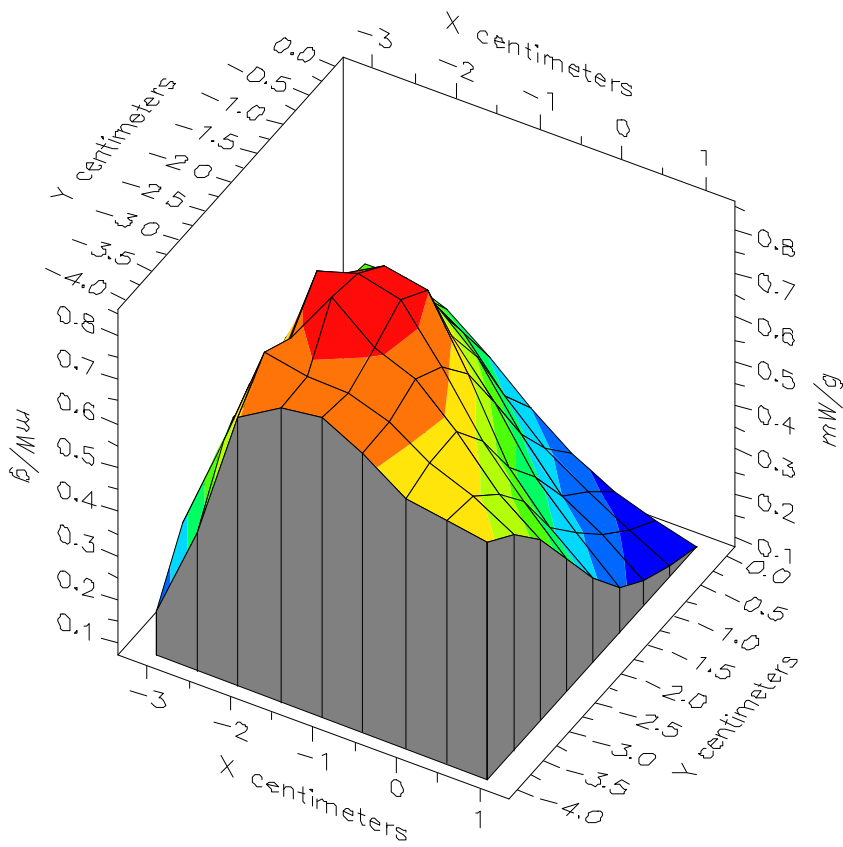


File : 01102208_ZOOM

Start : 22-Oct-101 12:27:44 pm End : 22-Oct-101 12:37:19 pm

HYUNDAI/TX-25B/24;824.04MHz;W;Helical/Out;

Head/Left Ear;ZOOM/SAR;PCTEST/E Field/0 DegreesBrain/41.500/0.900



File : 01102208_ZOOM

Start : 22-Oct-101 12:27:44 pm End : 22-Oct-101 12:37:19 pm

HYUNDAI/TX-25B/24;824.04MHz;W;Helical/Out;

Head/Left Ear;ZOOM/SAR;PCTEST/E Field/0 DegreesBrain/41.500/0.900

