

APPENDIX C (DIPOLE VALIDATION)

Test Laboratory: HCT CO., LTD.
 Ambient Temperature: 21.4 °C
 Test Date: Aug.12, 2008

DUT: HAC-Dipole 835 MHz; Type: D835V3; Serial:1024

Communication System: CW; Frequency: 835 MHz; Duty Cycle: 1:1
 Medium parameters used: $\sigma = 0$ mho/m, $\epsilon_r = 1$; $\rho = 1000$ kg/m³
 Phantom section: E Dipole Section ; Measurement SW: DASY4, V4.7 Build 71; Postprocessing SW: SEMCAD, V1.8 Build 176

DASY4 Configuration:

- Probe: ER3DV6 - SN2343; ConvF(1, 1, 1); Calibrated: 2008-05-19
- Sensor-Surface: (Fix Surface)
- Electronics: DAE3 Sn466; Calibrated: 2008-07-17
- Phantom: HAC Test Arch; Type: SD HAC P01 BA

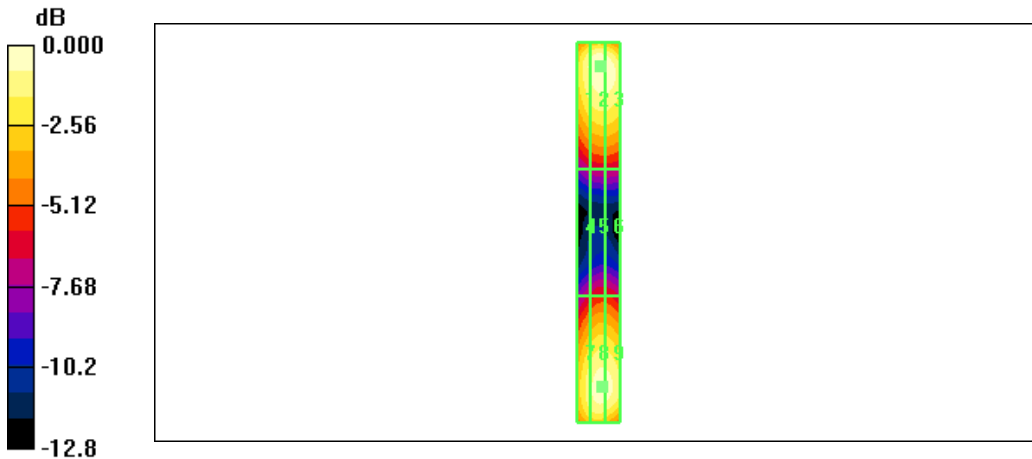
E Scan 10mm above CD 835 MHz/Hearing Aid Compatibility Test (41x361x1): Measurement grid: dx=5mm, dy=5mm
 Maximum value of peak Total field = 164.1 V/m
 Probe Modulation Factor = 1.00
 Device Reference Point: 0.000, 0.000, 354.7 mm
 Reference Value = 127.6 V/m; Power Drift = -0.008 dB
Hearing Aid Near-Field Category: M4 (AWF 0 dB)

Peak E-field in V/m

Grid 1	Grid 2	Grid 3
154.8 M4	164.1 M4	162.3 M4
Grid 4	Grid 5	Grid 6
78.4 M4	84.7 M4	84.2 M4
Grid 7	Grid 8	Grid 9
147.6 M4	157.6 M4	156.3 M4

Cursor:

Total = 164.1 V/m
 E Category: M4
 Location: -1, -78.5, 365.8 mm



0 dB = 164.1V/m

Test Laboratory: HCT CO., LTD.
 Ambient Temperature: 21.4 °C
 Test Date: Aug.12, 2008

DUT: HAC Dipole 1880 MHz; Type: CD1880V3; Serial:1019

Communication System: CW; Frequency: 1880 MHz; Duty Cycle: 1:1
 Medium parameters used: $\sigma = 0$ mho/m, $\epsilon_r = 1$; $\rho = 1000$ kg/m³
 Phantom section: E Device Section ; Measurement SW: DASY4, V4.7 Build 71; Postprocessing SW: SEMCAD, V1.8 Build 176

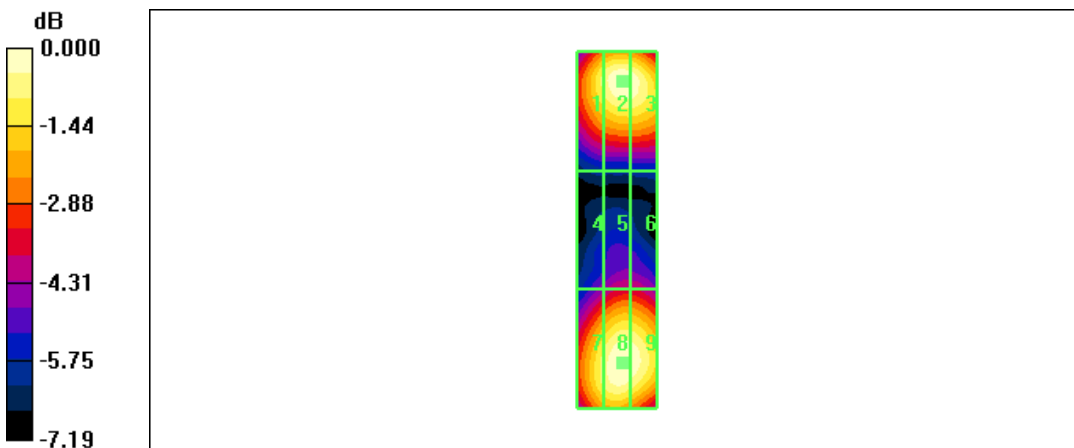
DASY4 Configuration:
 - Probe: ER3DV6 - SN2343; ConvF(1, 1, 1); Calibrated: 2008-05-19
 - Sensor-Surface: (Fix Surface)
 - Electronics: DAE3 Sn466; Calibrated: 2008-07-17
 - Phantom: HAC Test Arch; Type: SD HAC P01 BA

E Scan 10mm above CD 1880 MHz/Hearing Aid Compatibility Test (41x181x1): Measurement grid: dx=5mm, dy=5mm
 Maximum value of peak Total field = 141.2 V/m
 Probe Modulation Factor = 1.00
 Device Reference Point: 0.000, 0.000, 353.7 mm
 Reference Value = 78.2 V/m; Power Drift = -0.014 dB
Hearing Aid Near-Field Category: M2 (AWF 0 dB)

Peak E-field in V/m

Grid 1	Grid 2	Grid 3
129.3 M2	140.9 M2	139.1 M2
Grid 4	Grid 5	Grid 6
84.8 M3	92.6 M3	92.4 M3
Grid 7	Grid 8	Grid 9
130.1 M2	141.2 M2	139.4 M2

Cursor:
 Total = 141.2 V/m
 E Category: M2
 Location: -1.5, 33.5, 364.8 mm



0 dB = 141.2V/m

Test Laboratory: HCT CO., LTD.
 Ambient Temperature: 21.4 °C
 Test Date: Aug.12, 2008

DUT: HAC-Dipole 835 MHz; Type: D835V3; Serial:1024

Communication System: CW; Frequency: 835 MHz; Duty Cycle: 1:1
 Medium parameters used: $\sigma = 0$ mho/m, $\epsilon_r = 1$; $\rho = 1$ kg/m³
 Phantom section: H Dipole Section ; Measurement SW: DASY4, V4.7 Build 71; Postprocessing SW: SEMCAD, V1.8 Build 176

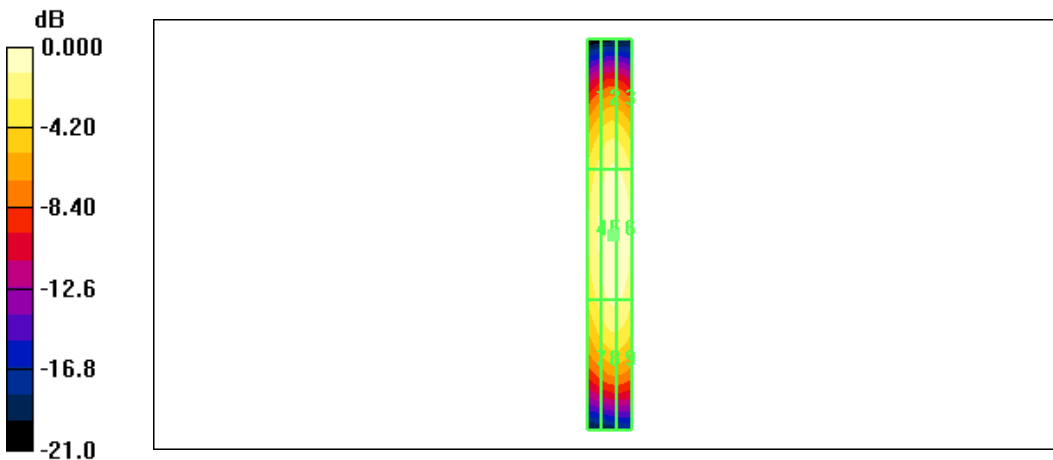
DASY4 Configuration:
 - Probe: H3DV6 - SN6101; ; Calibrated: 2008-05-19
 - Sensor-Surface: (Fix Surface)
 - Electronics: DAE3 Sn466; Calibrated: 2008-07-17
 - Phantom: HAC Test Arch; Type: SD HAC P01 BA

H Scan 10mm above CD 835 MHz/Hearing Aid Compatibility Test (41x361x1): Measurement grid: dx=5mm, dy=5mm
 Maximum value of peak Total field = 0.453 A/m
 Probe Modulation Factor = 1.00
 Device Reference Point: 0.000, 0.000, 354.7 mm
 Reference Value = 0.557 A/m; Power Drift = -0.020 dB
Hearing Aid Near-Field Category: M4 (AWF 0 dB)

Peak H-field in A/m

Grid 1	Grid 2	Grid 3
0.360 M4	0.397 M4	0.393 M4
Grid 4	Grid 5	Grid 6
0.408 M4	0.453 M4	0.449 M4
Grid 7	Grid 8	Grid 9
0.358 M4	0.398 M4	0.395 M4

Cursor:
 Total = 0.453 A/m
 H Category: M4
 Location: -2, 0.5, 366.6 mm



0 dB = 0.453A/m

Test Laboratory: HCT CO., LTD.
 Ambient Temperature: 21.4 °C
 Test Date: Aug.12, 2008

DUT: HAC Dipole 1880 MHz; Type: CD1880V3; Serial:1019

Communication System: CW; Frequency: 1880 MHz; Duty Cycle: 1:1
 Medium parameters used: $\sigma = 0$ mho/m, $\epsilon_r = 1$; $\rho = 1$ kg/m³
 Phantom section: H Dipole Section ; Measurement SW: DASY4, V4.7 Build 71; Postprocessing SW: SEMCAD, V1.8 Build 176

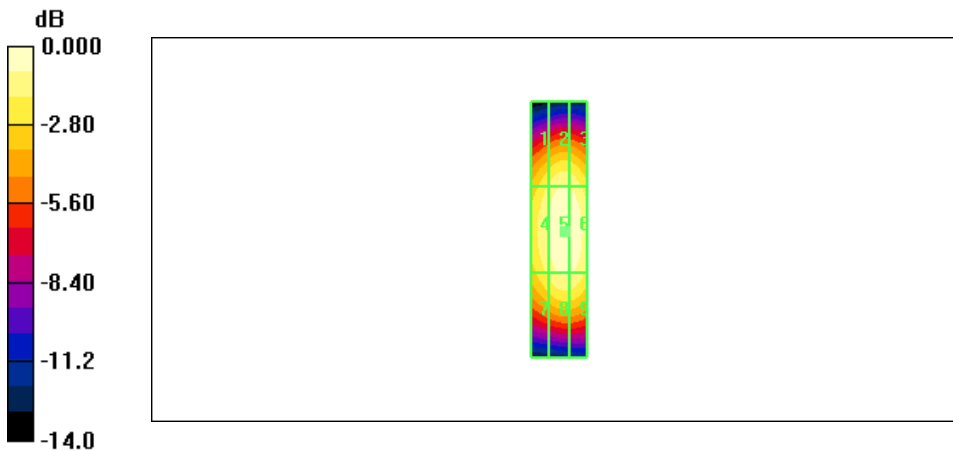
DASY4 Configuration:
 - Probe: H3DV6 - SN6101; ; Calibrated: 2008-05-19
 - Sensor-Surface: (Fix Surface)
 - Electronics: DAE3 Sn466; Calibrated: 2008-07-17
 - Phantom: HAC Test Arch; Type: SD HAC P01 BA

H Scan 10mm above CD 1880 MHz/Hearing Aid Compatibility Test (41x181x1): Measurement grid: dx=5mm, dy=5mm
 Maximum value of peak Total field = 0.471 A/m
 Probe Modulation Factor = 1.00
 Device Reference Point: 0.000, 0.000, 354.7 mm
 Reference Value = 0.572 A/m; Power Drift = 0.013 dB
Hearing Aid Near-Field Category: M2 (AWF 0 dB)

Peak H-field in A/m

Grid 1	Grid 2	Grid 3
0.388 M2	0.425 M2	0.421 M2
Grid 4	Grid 5	Grid 6
0.430 M2	0.471 M2	0.467 M2
Grid 7	Grid 8	Grid 9
0.393 M2	0.431 M2	0.428 M2

Cursor:
 Total = 0.471 A/m
 H Category: M2
 Location: -2, 0.5, 366.6 mm



0 dB = 0.471A/m