

P. SAR Test Setup Photographs

■ **Test Setup Photo**



■ **Test Setup Photo**



[Distance of 2.5 cm from the EUT]

■ **Test Setup Photo**



■ **Test Setup Photo**



[Distance of 2.5 cm from the EUT]

■ **Test Setup Photo**

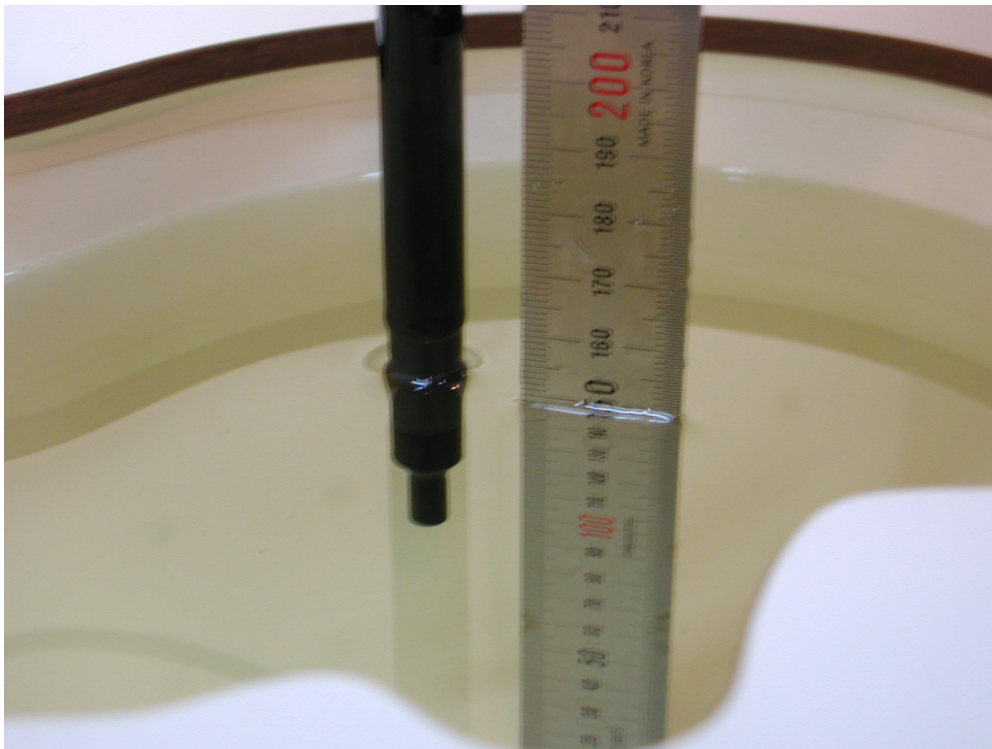


■ **Test Setup Photo**



[Distance of 0.8 cm from the EUT]

[835MHz/ 1 900MHz Head Tissue Liquid Depth: 15cm]



[835MHz/ 1 900MHz Body Tissue Liquid Depth : 15cm]

