

## P. SAR Test Setup Photographs

■ **Test Setup Photo**



■ **Test Setup Photo**



[Distance of 2.0 cm from the EUT]

■ **Test Setup Photo**



■ **Test Setup Photo**



[Distance of 2.0 cm from the EUT]



■ **Test Setup Photo**

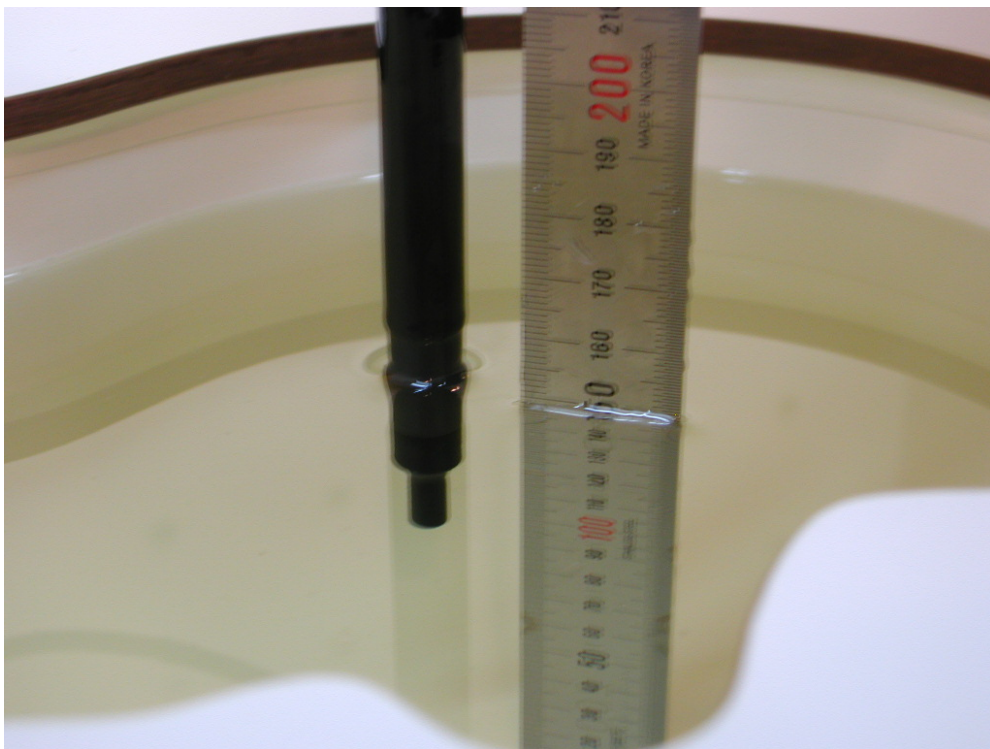
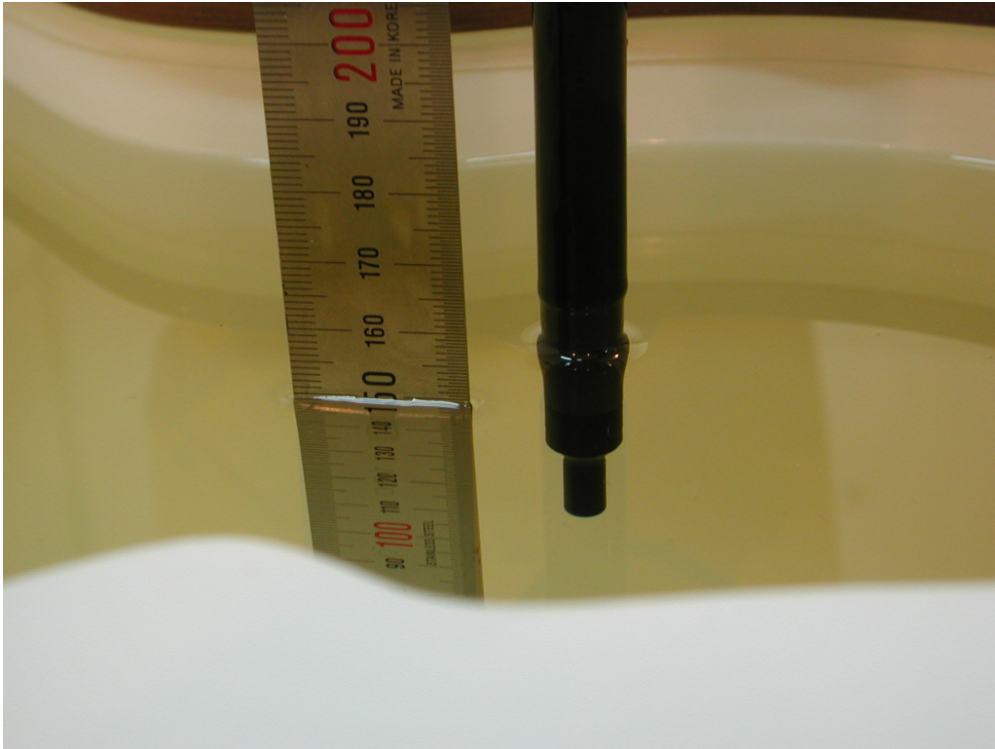


■ **Test Setup Photo**



[Distance of 2.0 cm from the EUT]

[835MHz/ 1900MHz Head Tissue Liquid Depth: 15cm]





[835MHz/ 1900MHz Body Tissue Liquid Depth : 15cm]

