

Alltel QuickLink Mobile

UM150 Wireless Internet Card User Manual



CONTENTS

1. BEFORE USING YOUR UM150	1
1.1 About this User's Manual.....	1
1.2 Product Overview	1
1.3 Product Package Contents.....	1
1.4 Introduction to Your UM150 Wireless Internet Card.....	1
1.5 Product Features.....	2
1.6 Product Handling.....	3
1.7 Configuration	3
2. INSTALLATION AND SETUP FOR THE QUICKLINK MOBILE	4
2.1 The QuickLink Mobile Setup Program.....	4
2.2 The QuickLink Mobile Setup Wizard	7
3. USING QUICKLINK MOBILE	9
3.1 Features.....	9
3.2 Getting Started	10
3.3 Connecting	11
3.4 Using Dial Up Connections	13
4. QUICKLINK MOBILE PREFERENCES	14
4.1 General Preferences	14
4.2 WWAN Specific Settings	16
4.3 Additional Features.....	19
5. INSTALLING UM150	24
5.1 Precautions.....	24
5.2 Recommended System Requirements.....	24
5.3 Installing Software	25
5.3.1 Warnings	25
5.3.2 Notes.....	25
5.3.3 Unplugging or Ejecting the Device	26
5.3.4 Using the Device	28
5.3.5 Using the Wireless Internet Card Extension Cable	29
6. REGULATORY AND SAFETY INFORMATION	30
6.1 Regulatory Notices.....	30
6.2 Operating Conditions	30
6.3 Warnings and Cautions	30
6.4 Safety Precautions	31

1. BEFORE USING UM150

1.1 About this User's Manual

You will find all the information you need to install and use the UM150 in this user's manual. Before using the UM150, you must properly install the UM150 by following the installation instructions.

Instructions

- Before inserting the UM150 Wireless Internet Card into your computer, install the UM150 software. The installation software is included in the product package. Insert the CD into your CD-ROM drive. Installation may take a few minutes.
- It is highly recommended that you read the safety precautions in this manual before using the UM150.

1.2 Product Overview

Thank you for purchasing the Alltel UM150 Wireless Internet Card. The UM150 is a 3G wireless device that enables high-speed wireless communication from your PC. The UM150 is simple to install and use.

1.3 Product Package Contents

Following items are included in the product package. If any of the items listed below are missing, please contact the retail location where you purchased the product.

- UM150 Wireless Internet Card
- Installation CD that containing software and user's manual
- Wireless Internet Card extension cable
- Quick Start Guide

1.4 Introduction to Alltel UM150 Wireless Internet Card

The Alltel UM150 is designed for your PC's USB port, which is available in most PC models. The UM150 can be used to access the Internet, your company's intranet, or you can use it to send and receive email. It is extremely useful when you are away from the office, on the road, or where ever a wireline Internet access is not readily available.



1.5 Product Features

- Power management: The UM150 utilizes power management and system overhead reduction functions provided by the USB interface for maximum power savings.
- Antenna design: Efficient, innovative design optimizes data transfer rate and sensitivity to network signals.
- Extension Y Cable connector: Simply insert the USB connector into the USB port of your computer to deliver a DC power supply, increased RF performance, and to solve clearance issues.
- External Memory: Provides MicroSD™ card slot for an External Memory Card for storing sounds, pictures, and videos (* MicroSD card is optional)
- Wireless Internet Card that supports USB interface.
- Supports North American PCS (1900 MHz) and Cellular (800 MHz) bands.
- Utilizes QUALCOMM MSM6800 chip set.
- Supports 3G network technologies.
- Average Data Rate: 600 Kbps to 1.4 Mbps download; 500 Kbps to 800 Kbps upload.
- Supports Windows XP and Vista systems with installed host software and driver.
- Compatible with Mac OS X 10.3.9 and higher.
- Provides Alltel Wireless Internet service.

1.6 Product Handling

- 1) Do not put any adhesive label on the USB connector. It may leave a sticky residue that can cause problems inside the PC USB port.
- 2) The UM150 USB device should easily slide into the USB port. Do not force the UM150 into the USB port as it may cause damage to the modem and/or the port.
- 3) Keep the UM150 in a dry and clean place.
(Storage temperature: -22°F to 149°F [- 30°C to 65°C]). Keep your device away from liquids, dust and excessive heat.

1.7 Configuration

To use the UM150, you should install the software included in the installation CD and configure the UM150 USB device. See the next section for more information on software installation and USB device configuration.

2. INSTALLATION AND SETUP FOR THE QUICKLINK MOBILE

This section will guide you through the installation and setup process for the QuickLink Mobile. Before getting started, you should become familiar with the documentation that came with your mobile phone or Wireless Internet Card.

CD's

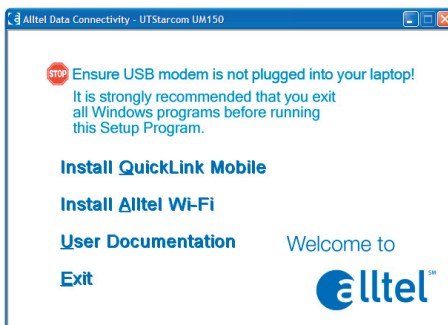
1. If you purchased the UM150 Wireless Internet Card, there is only one CD that contains the QuickLink Mobile and Wireless Internet Card drivers.

Getting Started

To install the QuickLink Mobile:

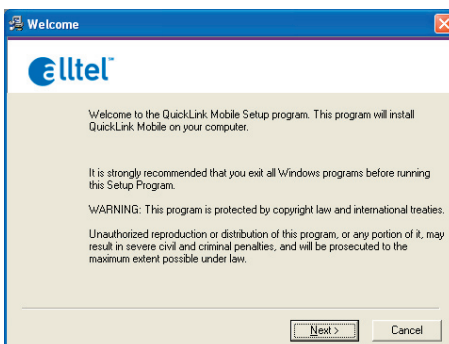
1. Turn on your computer then close all applications.
2. Insert the CD-ROM into your CD drive.
3. If set up does not automatically start, click the Start button on the taskbar then choose Run. Type D:\Start (where D is the letter of your CD-ROM drive) then click OK.
4. Follow the steps in the next section.

* QuickLink Mobile software must be installed before you insert the Wireless Internet Card into the computer for the first time. Only after the software has been installed can Windows successfully install and configure the Wireless Internet Card.

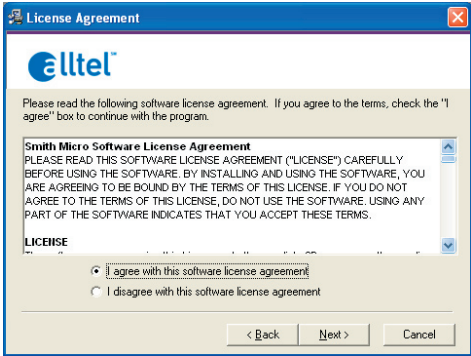


2.1 The QuickLink Mobile Setup Program

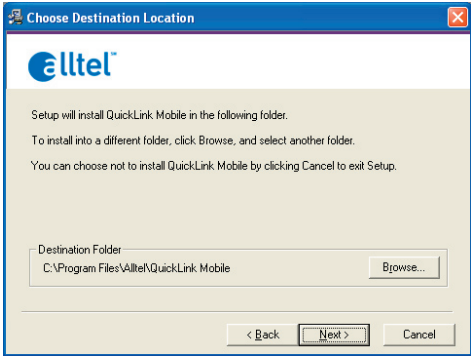
STEP 1: Click the QuickLink Mobile setup program. The “Welcome” screen appears. Click the Next button to continue with the installation process.



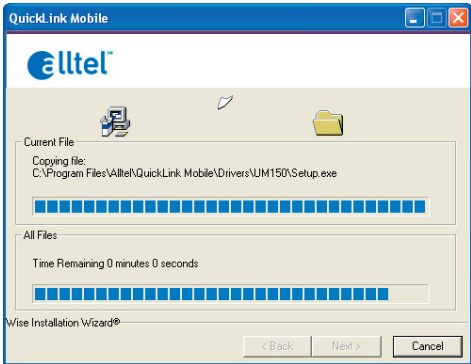
STEP 2: After the Welcome screen you will see the QuickLink Mobile License Agreement. In order to install and use this product you must agree with the terms of this agreement. Select “I agree with this software license agreement”, then click the Next button to continue. If you do not agree with this agreement, click the Cancel button to exit.



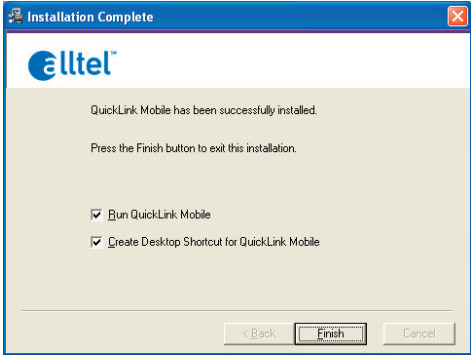
STEP 3: You are now ready to select the location on your computer where the QuickLink Mobile should be installed. It is recommended that you do not modify the default destination folder. Click the Next button to continue.



STEP 4: During this step the components of the QuickLink Mobile product are being installed onto your computer. Installation will occur to the destination folder specified in Step 3 above.



STEP 5: Installation is now complete. Click the Finish button to leave the QuickLink Mobile setup program and begin using your new software.



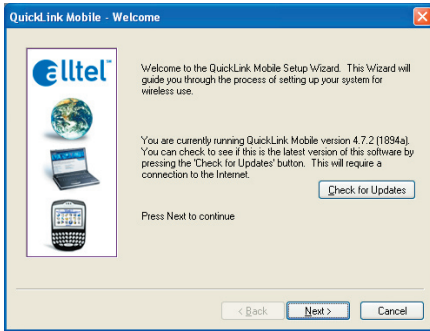
* The setup program will automatically create a QuickLink Mobile shortcut on your desktop.

2.2 The QuickLink Mobile Setup Wizard

After you have successfully completed the installation process of QuickLink Mobile, you are ready to start the QuickLink Mobile program and begin your initial setup. The steps in the Setup Wizard are critical to the proper operation of QuickLink Mobile.

STEP 1: To start the QuickLink Mobile program click the Start button, select the Programs menu and choose the QuickLink Mobile menu item.

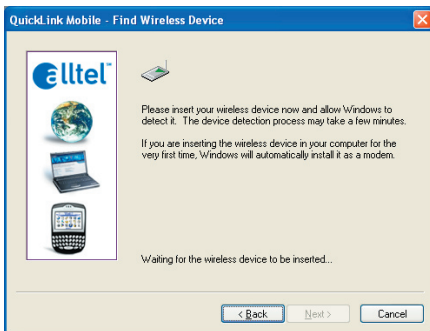
STEP 2: On first-run of QuickLink Mobile the Setup Wizard will automatically run. The “Welcome” screen appears.

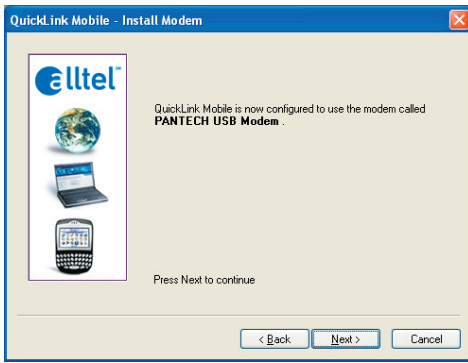


If you have an Internet connection, it is recommended that you check to see if you are running the latest version of QuickLink Mobile. Click the Check for Updates button to perform this check.

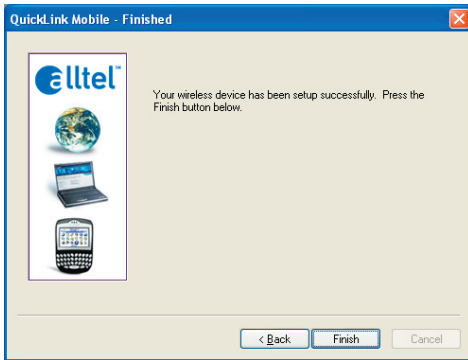
Click Next to continue.

STEP 3: Insert your UM150, then wait for Windows to detect and install drivers for the device.





STEP 4: The detection and configuration process for your wireless device is now complete. In this step you can elect to run the QuickLink Mobile automatically every time you start your computer. To do so, check the “Run QuickLink Mobile at Startup” checkbox. Click Finish when complete.



Please familiarize yourself with the information in the “Using QuickLink Mobile” and “Connecting to the Internet” sections of this guide.

3. USING QUICKLINK MOBILE

Today's online world offers more services everyday and Alltel Wireless gives you the tools you need to take advantage of the best in connectivity solutions. With QuickLink Mobile, enjoy the freedom and convenience of wireless Internet connectivity from your computer!

3.1 Features

WWAN (Wireless Wide Area Network, 1xEV-DO/1xRTT/CDMA)

Specific Features:

- Configures your PC to use your wireless device as a modem.
- Creates an Alltel Wireless Internet connection if using an Alltel Wireless Internet capable device.
- Copy utility to create wireless copies of your dial-up connections, if supported by your device.
- Signal strength and battery level display for most wireless phones.
- Test function for WWAN device.

* A WWAN capable device is required to use the WWAN features. Individual WWAN features are also device dependent as described in the WWAN section above.

Other Features:

- Can also be used to launch all of your dial-up networking connections, if desired.
- Can launch your browser, e-mail client, VPN or a program of your choice upon connection.
- Logs connections used, duration and bytes sent and received.
- See the section "Additional Features" for more information about the features of QuickLink Mobile.

3.2 Getting Started

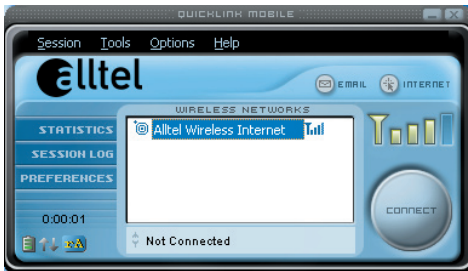
Double click on the QuickLink Mobile icon on your desktop or click on the Windows Start menu and select QuickLink Mobile from the list of Programs.



About the Wireless Networks View

The QuickLink Mobile will open the Wireless Networks window by default. This view is where you manage your wireless connections. The Wireless Networks window displays all currently available network connections.

At a glance you can see the signal strength and battery level. Select “Refresh Networks” from the “Tools” menu to update the information in this panel. Your current connection state and the elapsed time of the connection are displayed along the bottom of the status bar.



If your expected connection does not appear or if you connected your wireless phone and cable, or inserted your Wireless Internet Card after starting QuickLink Mobile, select “Refresh Networks” from the “Tools” menu. This will cause QuickLink Mobile to look for your wireless device(s) and verify network availability.

* If you change phones or Wireless Internet Cards, you will need to run the Setup Wizard again. To do this make sure that your phone and cable are connected, then select “Run Wizard” from the “Tools” menu.

3.3 Connecting

Once your device is properly configured, connecting to the Internet is as simple as selecting the network connection type shown in the list and clicking the connect button.

1. Select Alltel Wireless Internet.
2. Click the “Connect” button when it becomes enabled.

Once connected, the “Connect” button will change to “Disconnect”. Simply click this to end your current connection. To connect to any other network shown, select it, and then select “Connect”.

The Status Bar

Information regarding your current network connection can be seen in the status bar along the bottom of the QuickLink Mobile interface. For more information on this status bar, see the section “The Status Bar” in the “Additional Features” section.

- * If you are using a WWAN (1xEV-DO/1xRTT/CDMA) device that supports the Alltel Wireless Dial-Up-Data service and you made wireless copies of your dial-up accounts, they will also appear. See the section “Creating Wireless Copies of your Dial-Up Connections”. Optionally you can have all dial-up connections appear in QuickLink Mobile and use it to launch any dial-up networking connection.
- * The first time you connect with the Alltel Wireless Internet connection, a connectivity warning message will appear. You have the option to suppress these warning messages when they are displayed.

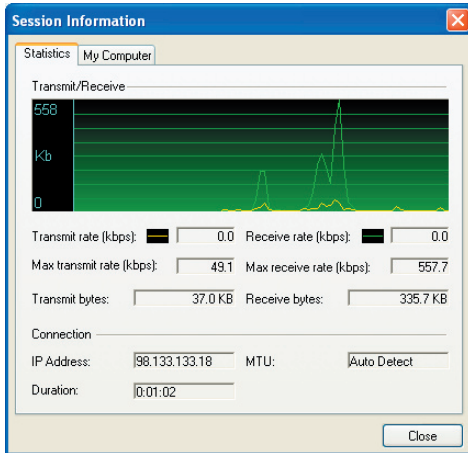
QuickLink Mobile will display status information at the bottom during the connection process as well as while connected. When not connected, the status text will display “Not connected” for the currently selected network. The timer will display “00:00:00”. Once connected, the status text will display “Connected” and the elapsed timer will begin to run.

The pop up status can be turned off, if desired, by selecting “Options”, “Preferences”, “Options” tab, un-checking “Show popup status windows by tray”. Right clicking on the tray icon provides various options and double clicking on it will always show the application. Placing your cursor on it will display the current connection status.

Based on your preferences, your browser or e-mail or VPN program can be launched automatically, or you can launch whatever software you want to use. To determine if all connections appear in the drop down list or only your wireless ones.

* Always use QuickLink Mobile when connecting via the Alltel Wireless Internet connection.

At any time during your connection you can check your current connection speed and throughput stats in the Statistics tab of the Session Information window. To see this window, select “Statistics” from the “Session” menu.



The Session Information window will also contain a My Computer tab if applicable. The My Computer tab contains detailed information about your computer. This information is helpful when troubleshooting a problem.

Additional information when using the “Alltel Wireless Internet” connection: By default QuickLink Mobile enables the internet accelerator software for the Alltel Wireless Internet connections.

If you are using the Alltel Wireless Internet connection and the call fails when you try to connect, with QuickLink Mobile returning to its idle state, you should try to connect again. If you feel you may have incorrectly entered your wireless device number during initial setup, select “Tools”, “Run Wizard”.

Dormancy:

Alltel Wireless Internet data sessions become dormant if you are not sending or receiving any data. As soon as you resume sending or receiving data, the data session will return to an active state.

Depending on your device and your Alltel Wireless Internet plan, your data session may disconnect during a dormant state.

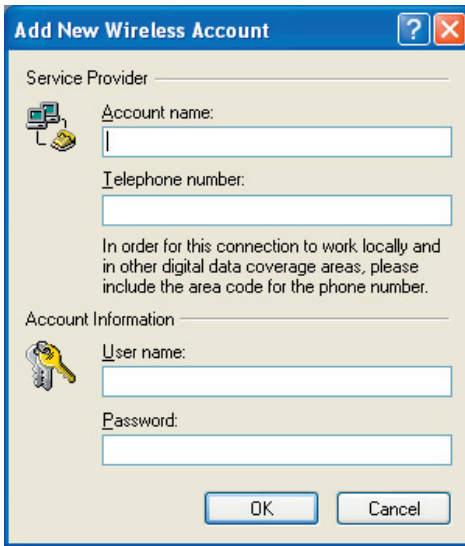
3.4 Using Dial Up Connections

This section is only applicable if you are using a WWAN Device that supports Dial-Up connections (a wireless phone and cable or a Wireless Internet Card).

You can make wireless copies of existing dial up accounts on your system. This will wirelessly enable them and allow you to connect to them wirelessly.

To launch the copy utility, select “Options”, “Dial-up Accounts” then “Copy”.

Click on the connection or connections you want to copy and click on the “OK” button.



The new connection will have a suffix of “(Wireless)” and will be set to use your wireless phone as the modem. If the utility is unable to automatically recognize your existing area code and number, the existing number will be displayed, and you will be prompted to enter the area code and number. The utility configures the new wireless connections to always dial 11 digits, so that they will work locally and also in other digital data coverage areas.

If it is determined that the connection might benefit by further optimization, an additional connection with a “(Wireless Optimized)” suffix, will also be created. This connection may connect faster. If you have trouble with the “(Wireless Optimized)” connection, you can delete it from your dial-up networking folder and use the “(Wireless)” connection.

To delete connections:

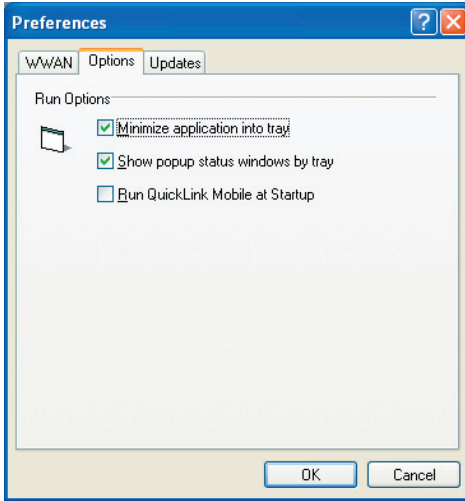
Windows XP users can access Dial-Up Networking from QuickLink Mobile by selecting “Options”, “Control Panels”, “Network and Dial-up Connections”, right click on the desired connection and select “Delete”.

4. QUICKLINK MOBILE PREFERENCES

4.1 General Preferences

Options Tab

Click on “Options”, then “Preferences”.

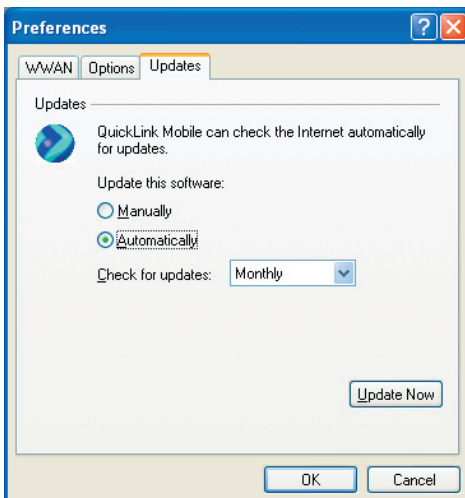


Minimize application into tray: When you minimize the application it will now show in the Windows task bar. To restore the application click on the QuickLink Mobile tray icon, and select Show Application.

Show popup status windows by tray: Displays small popup sliding windows in the lower right corner of the screen when connections are made, and when network connections are lost.

Run QuickLink Mobile at Startup: Automatically launches QuickLink Mobile whenever you start your computer.

Updates Tab



This feature allows QuickLink Mobile to automatically check for software updates. If an update is available, you will be notified of its size and approximate download times if using Alltel Wireless Internet.

You will be given the choice to download or cancel. If you select download, a display appears that shows the progress as the update is downloading with the option to cancel if desired. You do not need to download the updates wirelessly; you can use any connection to the Internet.

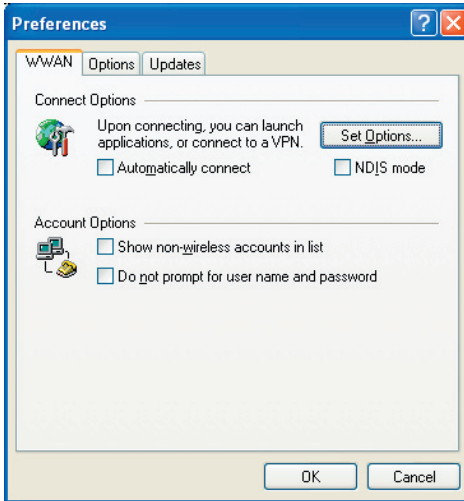
Note: If you download the updates wirelessly, normal usage charges apply.

You can allow the software to automatically check for updates, daily, weekly (default), or monthly. It only checks when the application is running and when it detects that you are connected and able to access to the Internet. If desired, you can select “Manually” and the software will only check for updates when you select “Update Now” (pictured above), or you when you select, from QuickLink Mobile’s main screen, “Help”, “Check for Updates”.

4.2 WWAN Specific Settings

WWAN Preferences

Click on “Options”, then “Preferences”.



WWAN Options

Set Options . . . : This is used to set various WWAN connection settings. See below.

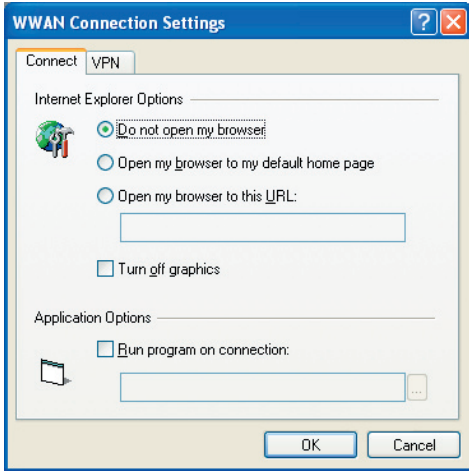
Automatically Connect: If desired, you can select to have QuickLink Mobile automatically connect to Alltel Wireless Internet at application startup.

Show non-wireless accounts in list: If you select this option all of your dial up accounts will appear in QuickLink Mobile’s list of accounts, allowing you to use QuickLink Mobile to launch them instead of Dial-Up Networking. With this option unchecked, the only connections that are displayed in QuickLink Mobile’s list of accounts, are the Alltel Wireless Internet, (depending on your wireless phone/device capabilities) and any Wireless connections you have created, manually or with the Copy Accounts Wizard.

Do not prompt for user name and password: If you are only using the Alltel Wireless Internet connection, this setting has no effect. If you created Wireless connections to dial into other networks or have existing connections you are going to launch using QuickLink Mobile, checking this option will skip the screen that normally asks for your user name and password. For this to work you will have had to connect previously, successfully saving your user name and password.

Connect Tab

When you select the “Set Options” button from the screen above, the following options will appear (“Options”, “Preferences”, “WWAN tab”, “Set Options . . .”) :




Do not open my browser: With this option selected, when you connect to a WWAN network, QuickLink Mobile will not automatically launch your default web browser.

Open my browser to my default home page: With this option selected, when you connect to a WWAN network (Alltel Wireless Internet), QuickLink Mobile will automatically launch your default web browser and load your home page.

Open my browser to this URL: With this option selected, when you connect to a WWAN network (Alltel Wireless Internet), QuickLink Mobile will automatically launch your default web browser but do it in such a way that the URL you specify will load instead of your home page.

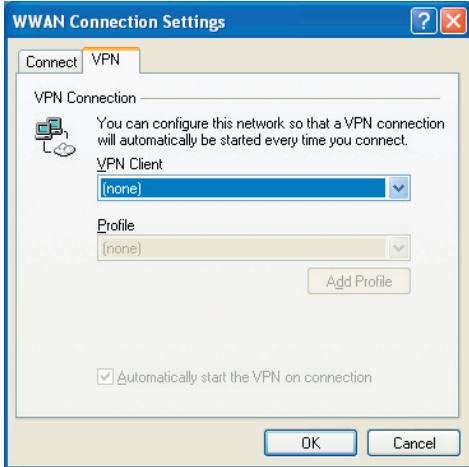
Turn off graphics: If you select this it will turn off graphics in Internet Explorer.

With these options off, web pages will load faster but you will have to right click and select “show picture” for any pictures you want to see. With the added performance of the internet accelerator software when using the Alltel Wireless Internet connection, most users prefer to see graphics and have audio support, so the default setting for both options is unchecked.

Run program on connection: This allows automatically running a program when you use QuickLink Mobile to connect to a WWAN network. Select the browse button,  , to browse to the desired application you want to run when you connect to a WWAN network using QuickLink Mobile. The application will run for all WWAN connections made from QuickLink Mobile.


VPN Tab

The following options exist on the VPN tab (“Options”, “Preferences”, “WWAN” tab, “Set Options. . .”, “VPN” tab) :



VPN Client: QuickLink Mobile automatically detects if certain VPN clients like Microsoft®, Cisco®, CheckPoint®, etc are installed on the computer and allows you to select the one you wish to use. Check with your network administrator to setup your VPN connection.

If the VPN client you wish to use does not appear in the list, you can select Other VPN Application.

Other VPN Application: This allows running a VPN program when QuickLink Mobile connects to a network. Enter the full path to an executable, or select the browse button,  , to find the path to the desired application.

4.3 Additional Features

In addition to the basic features mentioned in previous sections, QuickLink Mobile has the additional features listed below.

The Status Bar

The details of your current connection can be seen in the status bar at the bottom of the QuickLink Mobile interface. This status bar is always visible when the interface is fully expanded.



Connection Status

The text on the status bar reflects your current state. During an active connection, this text will change to “Connected”. If you are not connected, it will display “Not Connected”.

WWAN Wireless Internet Card Status Area

The text can change to the following:



- **Device not inserted:** Your WWAN Wireless Internet Card is removed from the computer.
- **Device not activated:** Your Wireless Internet Card needs to be activated. Select Activation from the Tools menu.

Coverage

For Wireless Internet Cards, an icon will display if you are in Alltel Wireless Internet coverage. Hover the mouse to see the tool tip showing the name of the current network.

NDIS

The following icons also appear on the status bar to indicate your device’s NDIS status:

	NDIS is enabled and connected
	NDIS is enabled but disconnected
(No NDIS image)	NDIS is disabled.

Throughput

The amount of data that you have sent and received since the current network connection was initiated can be seen by holding the mouse over the green up and down arrows on the left side of the status bar.

Battery Level

The current battery level of your mobile phone can be seen on the left side of the status bar.

Elapsed Time

The amount of time that has elapsed since the current network connection was initiated is tracked on the lower left side of the status bar.

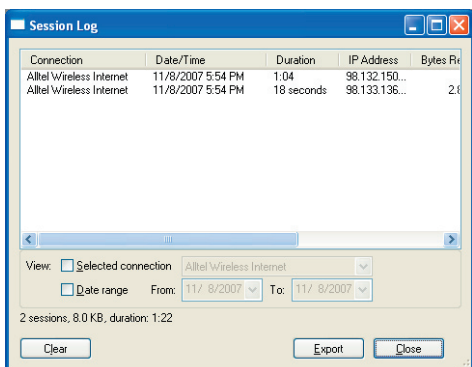
The Session Menu



Connect / Disconnect: You can connect or disconnect the wireless networks.

Log: This provides a concise session log of your network activity. Click on a column heading to sort the log. This window also displays the total number of sessions as well as the total time connected.

The information displayed in the Usage log can be customized using the controls that appear just below the list.



To view only the connection history of a specific network type, check the "Selected connection" checkbox and select the desired type from the drop-down list. To view only the connections made during a specific interval, check the "Date range" checkbox and specify the date in the "From:" and "To:" fields.

To export this log as a CSV file, click the Export button that is immediately above the log. To clear the log, press the Clear button. Note that clearing the log cannot be undone.

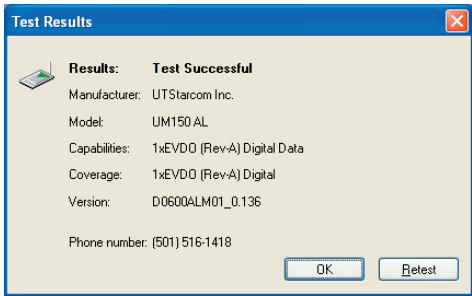
Statistics: If you selected to detect and install Alltel during installation, there will be a Wireless statistics tab with additional information and tools that are helpful in the event any troubleshooting of the connection is required. You can view key statistics including bandwidth and your IP address information, release your IP address, renew your IP address. If you selected to detect and install a WWAN device during installation, there will be a Statistics tab that will show data speeds during a session when using the WWAN device. There is also a “My Computer” tab; this tab has key information about your computer that may be helpful in troubleshooting any problems that may occur. It also has the option of e-mailing Alltel Wireless Technical Support.

Close: Exit the application.

The Tools Menu

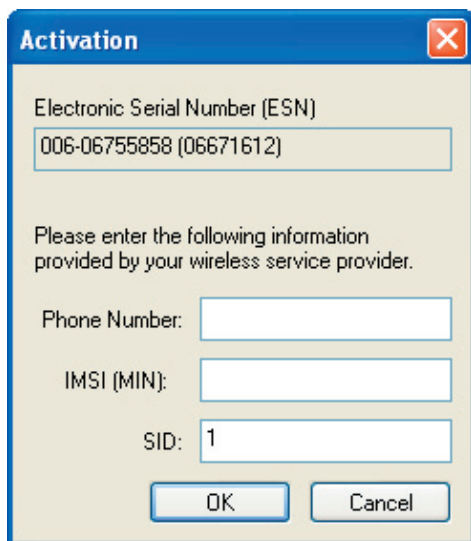
Refresh Networks: This causes QuickLink Mobile to verify connected devices and to scan for available Networks. Use this feature if you connected your equipment after launching QuickLink Mobile. Pressing the F6 function key can also access this option.

Test WWAN Device: Retrieve and display detailed information about your WWAN device (Wireless phone and cable or 1xEV-DO/1xRTT/CDMA Wireless Internet Card) such as manufacturer, model, version, etc. Also, view the current battery (not with Wireless Internet Cards) and signal strengths. This information can be valuable when troubleshooting a problem.



Run Wizard: Runs the Setup Wizard again. Useful if you need to reconfigure QuickLink Mobile to use a new mobile handset or Wireless Internet Card.

Activation: Programs the phone number, MIN, and SID to the Wireless Internet Card.



Activation

Electronic Serial Number (ESN)
006-06755858 (06671612)

Please enter the following information provided by your wireless service provider.

Phone Number:

IMSI (MIN):

SID:

OK Cancel

Alltel Wireless Internet Setup: Please contact the service provider for details.

The Options Menu

Control Panels: From this menu you have access to your systems “Modem”, “Network and Dial-Up Connections”, and “Internet” control panels. You can also see all control panels by selecting “All”.

Dial-Up Accounts: Add, edit, or copy wireless dial-up accounts.

- **Add Wireless:** This is used to create a wireless dial-up connection from scratch.
- **Add Other:** This is used to create a regular dial-up connection from scratch.
- **Edit:** This is used to edit properties of any dial-up connection.
- **Copy:** See section on Using Dial-Up Connections.

Power ON / Power OFF: This is used to power on/off the Wireless Internet Card.

Preferences: This is used to select preferences for settings related with connection. Please see WWAN Specific Settings for details.

Always on Top: When checked, the QuickLink Mobile window displays in front of all other open application windows, even if another window is placed over QuickLink Mobile Software window.

The “Internet” button

Launches the default web browser on your computer.

The “Email” button

Launches the default email application on your computer.

The Help Menu

Displays a variety of help options available to you. Click this button to find assistance with a problem, to explore the full range of Alltel Wireless and services, or to contact Alltel Wireless.

Contents: Launches this help file. You can also access this help file from your installation CD.

Check for Updates: Can be used with any connection to the Internet to check for software updates for QuickLink Mobile. Note: If downloading an update wirelessly, normal usage charges apply.

Alltel Home Page: Takes you to the Alltel Wireless home page that contains information about wireless devices, useful tips and hardware manuals.

Customer Service: This option will attempt to launch your mail client with the default address to e-mail Alltel Wireless Support.

About QuickLink Mobile: Displays the software version.

5. INSTALLING UM150

5.1 Precautions

- 1) Do not insert the UM150 before installing the software on your computer. When you complete the software installation, the system will prompt you to insert the UM150 into the USB port.
- 2) Once the Wireless Internet Card has been inserted into the computer, do not remove it from your computer without first completing the unplugging/ejection process. (See page 27 for more information on this process.)

5.2 Recommended System Requirements

To successfully install and use the UM150 Wireless Internet Card in your computer, the following system specifications are required.

Item	Required Specification
Operating system	Windows® Vista / Windows® XP / Mac OS X 10.3.9.
Port	USB port
Processor	150MHz or faster
Disk drive	CD-ROM
Memory	32 MB
Disk space	14 MB
Dial-up networking	DUN bound to TCP/IP

* The UM150 is useful for Pocket PCs that include a USB port. Also, SMS or voice service is not supported.

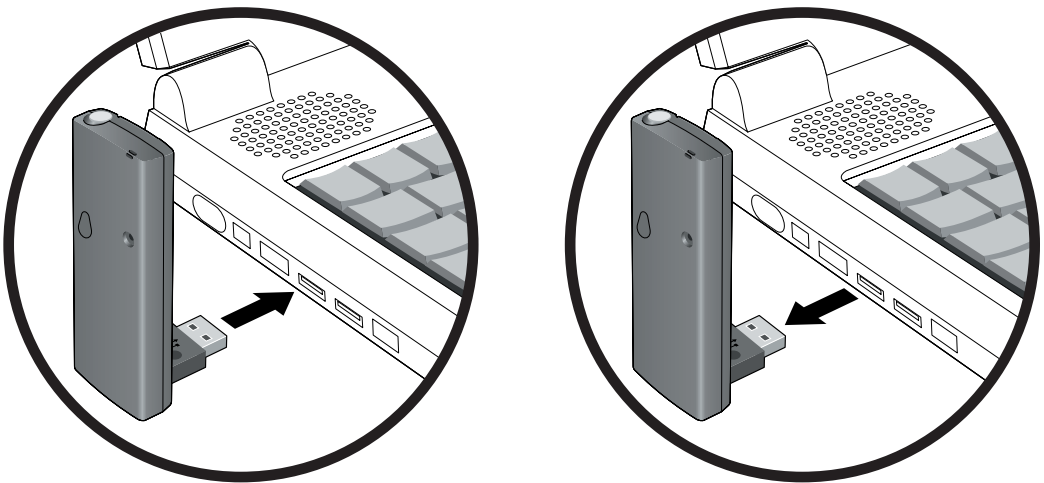
5.3 Installing Software

5.3.1 Warnings

- Make sure to complete the unplugging/ejection process before removing the UM150. If you remove the Wireless Internet Card improperly, the product may be damaged.
- Before inserting the UM150 into your computer's Wireless Internet Card port, remove the Installation CD from the CD-ROM drive.

5.3.2 Notes

- If you have inserted the Wireless Internet Card properly, Windows will inform you of the new hardware. Wait until Windows completes "Found New Hardware" task. In Windows XP, several tool tips similar to the "Found New Hardware" function will appear and disappear in the system tray automatically. Once hardware detection is complete, you will be prompted to start activation.
- You should hear a short beep sound each time you insert or remove the UM150, which is quite normal. It is an audible notification that your computer recognizes the new hardware.

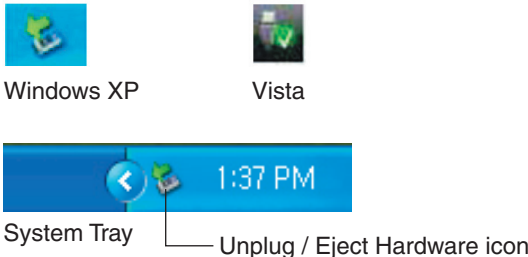


5.3.3 Unplugging or Ejecting the Device

Make sure to complete the unplug/eject process on your computer before removing the UM150 from your PC. If you remove the USB device improperly, the product may be damaged.

- WINDOWS

When disconnecting a USB mass storage device from the computer, close all windows and quit all running applications that are stored on the device and double click the Unplug/Eject Hardware icon in the System tray.





When you press the Unplug/Eject icon in the system tray, the pop-up window will appear.

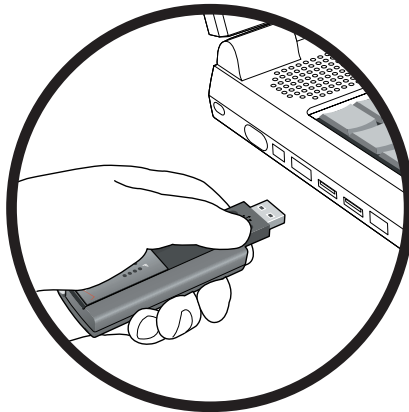


Click the [Stop] button. Now, you can remove the UM150 from your computer.

- **MACINTOSH**

When disconnecting a USB mass storage device from the computer, close all windows and quit all running applications that are stored on the device and drag the device's icon () onto trash () to dismount it from the Desktop prior to unplugging the device from the USB port or Hub.

* When removing the UM150, always grip the top and bottom of the modem and push/pull carefully.

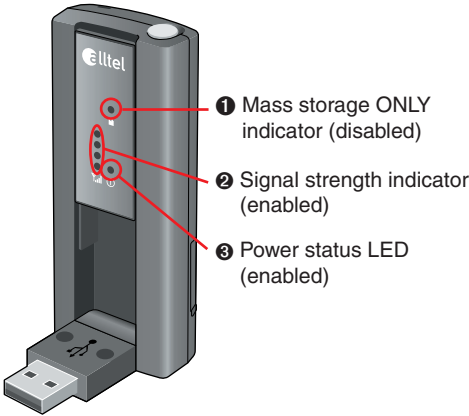


5.3.4 Using the Device

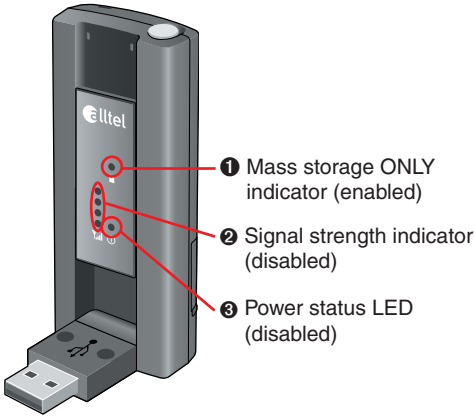
The usage mode is set by sliding the window up or down before connecting to your PC.

- To use the UM150 as both a modem and mass storage device, slide the window up and insert the UM150 into a PC USB port. To use it as a mass storage device only, slide the window down and insert the UM150 into a PC USB port.

Window slide up condition



Window slide down condition



Function	Operation	LED Status	
Modem and Mass storage	Slide the window up ➔ Insert to PC USB port	1 OFF 2 ON (Blue light level shows signal strength) 3 ON (Blue light blinks)	
	Slide the window up ➔ Insert to PC USB port ➔ Slide the window down	1 ON (Blue light blinks) 2 OFF 3 OFF	
Mass storage only	Slide the window down ➔ Insert to PC USB port	1 ON (Blue light stays on) 2 OFF 3 OFF	
	Slide the window down ➔ Insert to PC USB port ➔ Slide the window up	1 OFF 2 OFF 3 ON (Blue light stays on)	

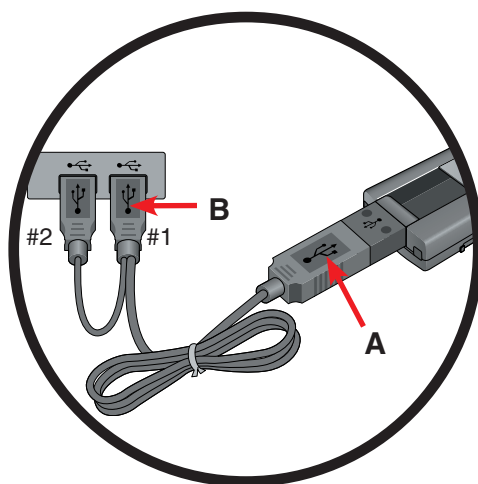
* To use the UM150 only as a mass storage on a computer that does not have Quick Link Mobile installed, slide the window down and insert it into a PC USB port.

5.3.5 Using the Wireless Internet Card Extension Cable

- The UM150 Modem package includes an extension USB Y-shaped cable. Although the cable is not required for use with your UM150 Modem, it offers increased performance for your UM150 Modem under certain operating conditions. Simply insert the USB connector into the USB port of your computing device to deliver a DC power supply, increased RF performance, and to solve clearance issues.

Using the Wireless Internet Card Extension Cable:

- 1) Plug the single end of the Y-shaped cable into the UM150 Modem. **[A]**
 - 2) Depending on the condition you are trying to solve (DC power supply, increased RF performance, or clearance issues), plug either one of the two connected ends of the Wireless Internet Card extension cable into the Type A USB port(s) on your computer. **[B]**
- * The Wireless Internet Card extension cable connector labeled #1, is the primary data power cable used to either extend the UM150 modem away from your computer allowing you to locate the modem in a more optimum signal location or solve any computer USB port clearance issues. The Wireless Internet Card extension cable connector labeled #2, is a DC power supply cable and must be used with connector #1 to provide the modem up to 1Amp of current for use in weaker signal areas.
- 3) The device is connected to and powered by the computer as soon as the USB cable is plugged properly into the appropriate Type A USB port(s).
 - 4) Launch Quick Link Mobile and click Connect.



6. REGULATORY AND SAFETY INFORMATION

6.1 Regulatory Notices

UM150 complies with Parts 15, 22, and 24 of the FCC rules. It has been tested with the typical personal computer with a USB port. This USB device must not be co-located or operated in conjunction with any other antenna or transmitter. If you use this USB device in any other configuration, the FCC RF Exposure compliance limit can be exceeded.

6.2 Operating Conditions

- 1) This device does not cause harmful interference, and this device must accept any interference received, including interference that may cause undesirable operations.
- 2) The manufacturer stipulates that the antenna should be more than 1.5 cm (0.60") from by-standers and 1.0cm (0.39") from the user.



6.3 Warnings and Cautions

- 1) Modifying or changing this USB device without express authorization can nullify compliance with RF exposure guidelines.
- 2) This USB device has been tested and found to comply with the limits pursuant to Part 15, 22, and 24 of the FCC Rules. These limits are designed to provide reasonable protection against harmful interference when appropriately installed. This USB device generates, uses, and can radiate radio frequency and, if not installed and used according to the instructions provided, it may cause harmful interference to radio communication. However, there is no guarantee that interference will not occur in any particular installation.

- 3) If this USB device does cause harmful interference with radio or television signals (determine this by turning the USB device off and on), attempt to correct the interference by trying one or more of the following:
 - Reorient or relocate the antenna.
 - Increase the distance between the USB device and receiver.
 - Connect the USB device into an outlet on a circuit different from that to which the receiver is connected.
 - Consult the dealer or an experienced radio/TV technician for help.
- 4) This USB device does not exceed the Class B limits for radio noise emissions from digital apparatus as set out in the interference causing equipment standard entitled “Digital Apparatus”, ICES-003 of the Department of Communications.
- 5) If you have purchased this product under a United States Government contract, it shall be subject to restrictions as set forth in subparagraph (C)(1)(ii) of Defense Federal Acquisitions Regulations (DFARs) Section 252.227-7013 for Department of Defense contracts, and as set forth in Federal Acquisitions Regulations (FARs) Section 52.227-19 for civilian agency contracts or any successor regulations. If further government regulations apply, it is your responsibility to ensure compliance with such regulations.

6.4 Safety Precautions

- 1) Data transmission and reception cannot be guaranteed because of the nature of wireless communications. Data can be delayed, corrupted or lost during transmission. Even though it is quite rare that significant data delay or loss occurs if the USB device is used in a normal manner, this USB device should not be used in cases that data transmission or reception failure could result in damage of any kind to the user or another party, including but not limited to personal injury, death or loss of personal property. UTStarcom bears no responsibility for damages or losses of any kind resulting from delays or errors in data transmission using the USB device, or for failure of the USB device to transmit or receive such data.
- 2) Do not use this USB device in areas where blasting is in progress, where explosive atmospheres may be present, near medical equipment, life support equipment, or any equipment which may be susceptible to any form of radio interference. Turn off this USB device in these areas, since it can transmit signals that could interfere with this equipment.

- 3) Do not use this USB device in any aircraft whether the aircraft is on the ground or in flight. Make sure to turn off this USB device in aircraft.
If used in an aircraft, it can transmit signals that could interfere with various aircraft systems.
- 4) Do not use this USB device while driving a car, since it can distract driver's driving. In some area, using the communication device while driving a car is illegal.

- * **WARNING:** This product contains a chemical known to the State of California to cause cancer.
- * **WARNING:** This product contains a chemical known to the State of California to cause birth defects or other reproductive harm.

SPECIFIC ABSORPTION RATES (SAR)

Maximum: SAR 0.93 W/kg CDMA835 Body
SAR 0.651 W/kg PCS1900 Body

THIS MODEL PHONE MEETS THE GOVERNMENT'S REQUIREMENTS FOR EXPOSURE TO RADIO WAVES.

Your wireless phone is a radio transmitter and receiver. It is designed and manufactured not to exceed the emission limits for exposure to radiofrequency (RF) energy set by the Federal Communications Commission of the U.S. Government. These limits are part of comprehensive guidelines and establish permitted levels of RF energy for the general population. The guidelines are based on standards that were developed by independent scientific organizations through periodic and thorough evaluation of scientific studies. The standards include a substantial safety margin designed to assure the safety of all persons, regardless of age and health. The exposure standard for wireless mobile phones employs a unit of measurement known as the Specific Absorption Rate, or SAR. The SAR limit set by the FCC is 1.6 W/kg. *

Tests for SAR are conducted with the phone transmitting at its highest certified power level in all tested frequency bands. Although the SAR is determined at the highest certified power level, the actual SAR level of the phone while operating can be well below the maximum value. This is because the phone is designed to operate at multiple power levels so as to use only the power required to reach the network. In general, the closer you are to a wireless base station antenna, the lower the power output. Before a phone model is available for sale to the public, it must be tested and certified to the FCC that it does not exceed the limit established by the government adopted requirement for safe exposure. The tests are performed in positions and locations (e.g., at the ear and worn on the body) as required by the FCC for each model. The highest SAR value for this model phone when tested for use at the when worn on the body, as described in this user guide, is 0.93 W/Kg. (Body-worn measurements differ among phone models, depending upon available accessories and FCC requirements). While there may be differences between the SAR levels of various phones and at various positions, they all meet the government requirement for safe exposure. The FCC has granted an Equipment Authorization for this model phone with all reported SAR levels evaluated as in compliance with the FCC RF exposure guidelines. SAR information on this model phone is on file with the FCC and can be found under the Display Grant section of <http://www.fcc.gov/oet/fccid> after searching on **FCC ID: PP4PX-600**.

Additional information on Specific Absorption Rates (SAR) can be found on the Cellular Telecommunications Industry Association (CTIA) web-site at <http://www.wow-com.com>.

* In the United States and Canada, the SAR limit for mobile phones used by the public is 1.6 watts/kg (W/kg) averaged over one gram of tissue. The standard incorporates a substantial margin of safety to give additional protection for the public and to account for any variations in measurements.

SAFETY INFORMATION FOR RF EXPOSURE

Body worn operation

This device was tested in multiple notebook computer configurations with USB port configurations for typical near-body operations with the back of the USB Modem kept 20mm from the body. To maintain compliance with FCC RF exposure requirements it can be used in notebook computers with substantially similar physical dimensions, construction, and electrical and RF characteristics, and that maintain a minimum 20mm separation distance between the user's body and the back of the USB Modem, including the antenna. The antenna(s) used for this USB Modem must not be co-located or must not operate in conjunction with any other antenna or transmitter within a host device.

Safety Information

SAFETY INFORMATION FOR FIXED WIRELESS TERMINALS POTENTIALLY EXPLOSIVE ATMOSPHERES

Turn your phone OFF when in any area with a potentially explosive atmosphere and obey all signs and instructions. Sparks in such areas could cause an explosion or fire resulting in bodily injury or even death.

INTERFERENCE TO MEDICAL DIVICES

Certain electronic equipment may be shielded against RF signal from you wireless phone. (pacemakers, Hearing Aids, and so on) Turn your phone OFF in health care facilities when any regulations posted in these areas instruct you to do so. RF signals may affect improperly installed or inadequately shielded electronic system in motor vehicles.

EXPOSURE TO RF ENERGY

Use only the supplied or an approved replacement antenna. Do not touch the antenna unnecessarily when the phone is in use. Do not move the antenna close to, or touching any exposed part of the body when making a call.

FCC Compliance Information

This device complies with Part 15 of FCC Rules.

Operation is subject to the following two conditions:

- (1) This device may not cause harmful interference, and
- (2) This device must accept any interference received.

Including interference that may cause undesired operation.

U.S.A.
U.S.FEDERAL COMMUNICATIONS COMMISSION
RADIO FREQUENCY INTERFERENCE STATEMENT

INFORMATION TO THE USER

NOTE : This equipment has been tested and found to comply with the limits for a Class B digital device pursuant to Part 15 of the FCC Rules. These limits are designed to provide reasonable protection against harmful Interference in a residential installation This equipment generates, uses, and can radiate radio frequency energy and, if Not installed and used in accordance with the instructions, may cause harmful Interference to radio communications. However, there is no guarantee that interference will not occur in a particular Installation. If this equipment does cause harmful interference to radio or television reception, which can be determined by turning the equipment off and on, the user is encouraged to try to correct the interference by one or more of the following measures:

- *- Reorient or relocate the receiving antenna.
Increase the separation between the equipment and receiver.
- *- Connect the equipment into an outlet of a circuit different from that to which the receiver is connected.
- *- Consult the dealer or an experienced radio/TV technician for assistance.
Changes or modification not expressly approved by the party responsible for Compliance could void the user's authority to operate the equipment. Connecting of peripherals requires the use of grounded shielded signal cables.