

File : c:/idx3/SYSTEM/SARMEAS3/data/Normal/01100925_ZOOM.VLT
Start : 9-Oct-101 05:17:35 pm End : 9-Oct-101 05:18:29 pm

Radio Type : HYUNDAI
Model Number : PX-25B
Serial Number : 72
Frequency : 1851.25 MHz
Peak Trans. Pwr : 0.300 W
Start Trans. Pwr : 0.300 W
Antenna Type : Helical
Antenna Posn. : In
Phantom Type : Head
Phantom Posn. : Right Ear
Scan Type : SAR
Probe Name : PCTEST
Field Type : E Field
Orientation : 0 Degrees

Mixture Type = Brain
Mixture Dielectric Constant = 40.400
Mixture Conductivity = 1.620

Comment :
HYUNDAI PCS-MODE PHONE
CH 0025 Conducted 24.8 dBm
HYUNDAI PCS-MODE PHONE

Robot : PCTEST

Probe Offset = 0.20 cm
Sensor Factor = 0.0108
Conversion Factor = 0.550

PCTEST Amplifier Channel Settings : 0.309 0.361 0.421

Max Location : X = -0.500, Y = -0.500, Z = 0.000 (cm) Value = 22.398

Measured Values (volts) =
1.436E-002 9.753E-003 7.185E-003 5.553E-003 4.341E-003 3.438E-003
3.116E-003 2.591E-003 2.331E-003 2.217E-003 2.129E-003 2.101E-003
1.934E-003 2.350E-003 2.510E-003 2.457E-003 2.455E-003 2.447E-003
2.573E-003 2.676E-003 2.902E-003

Calc. Voltage @ Surface (Vs) = 0.0190

Voltage @ 1.00 cm (Vt) = 0.0053

Ave. Voltage (Vs+Vt)/2 = 0.0121

Ave. SAR over 1 g (mW/g) = 0.6181

File : c:/idx3/SYSTEM/SARMEAS3/data/Normal/01100920_ZOOM.VLT
Start : 9-Oct-101 05:10:21 pm End : 9-Oct-101 05:11:14 pm

Radio Type : HYUNDAI
Model Number : PX-25B
Serial Number : 72
Frequency : 1851.25 MHz
Peak Trans. Pwr : 0.300 W
Start Trans. Pwr : 0.300 W
Antenna Type : Helical
Antenna Posn. : Out
Phantom Type : Head
Phantom Posn. : Right Ear
Scan Type : SAR
Probe Name : PCTEST
Field Type : E Field
Orientation : 0 Degrees

Mixture Type = Brain
Mixture Dielectric Constant = 40.400
Mixture Conductivity = 1.620

Comment :
HYUNDAI PCS-MODE PHONE
CH 0025 Conducted 24.8 dBm
HYUNDAI PCS-MODE PHONE

Robot : PCTEST

Probe Offset = 0.20 cm
Sensor Factor = 0.0108
Conversion Factor = 0.550

PCTEST Amplifier Channel Settings : 0.309 0.361 0.421

Max Location : X = -0.500, Y = -0.500, Z = 0.000 (cm) Value = 22.398

Measured Values (volts) =
2.496E-002 1.705E-002 1.249E-002 9.563E-003 7.367E-003 5.780E-003
4.531E-003 3.851E-003 3.067E-003 2.781E-003 2.331E-003 2.319E-003
2.153E-003 2.272E-003 2.355E-003 2.438E-003 2.310E-003 2.397E-003
2.649E-003 2.645E-003 2.792E-003

Calc. Voltage @ Surface (Vs) = 0.0329

Voltage @ 1.00 cm (Vt) = 0.0091

Ave. Voltage (Vs+Vt)/2 = 0.0210

Ave. SAR over 1 g (mW/g) = 1.0712

File : c:/idx3/SYSTEM/SARMEAS3/data/Normal/01100922_ZOOM.VLT
Start : 9-Oct-101 05:13:45 pm End : 9-Oct-101 05:14:39 pm

Radio Type : HYUNDAI
Model Number : PX-25B
Serial Number : 72
Frequency : 1880.00 MHz
Peak Trans. Pwr : 0.300 W
Start Trans. Pwr : 0.300 W
Antenna Type : Helical
Antenna Posn. : In
Phantom Type : Head
Phantom Posn. : Right Ear
Scan Type : SAR
Probe Name : PCTEST
Field Type : E Field
Orientation : 0 Degrees

Mixture Type = Brain
Mixture Dielectric Constant = 40.400
Mixture Conductivity = 1.620

Comment :
HYUNDAI PCS-MODE PHONE
CH 0600 Conducted 24.8 dBm
HYUNDAI PCS-MODE PHONE

Robot : PCTEST

Probe Offset = 0.20 cm
Sensor Factor = 0.0108
Conversion Factor = 0.550

PCTEST Amplifier Channel Settings : 0.309 0.361 0.421

Max Location : X = -0.500, Y = -0.500, Z = 0.000 (cm) Value = 22.398

Measured Values (volts) =
1.860E-002 1.243E-002 9.051E-003 6.883E-003 5.523E-003 4.254E-003
3.612E-003 2.896E-003 2.539E-003 2.333E-003 2.030E-003 2.078E-003
2.004E-003 2.149E-003 2.228E-003 2.274E-003 2.355E-003 2.361E-003
2.529E-003 2.527E-003 2.728E-003

Calc. Voltage @ Surface (Vs) = 0.0248

Voltage @ 1.00 cm (Vt) = 0.0066

Ave. Voltage (Vs+Vt)/2 = 0.0157

Ave. SAR over 1 g (mW/g) = 0.8007

File : c:/idx3/SYSTEM/SARMEAS3/data/Normal/01100929_ZOOM.VLT
Start : 9-Oct-101 05:23:01 pm End : 9-Oct-101 05:23:54 pm

Radio Type : HYUNDAI
Model Number : PX-25B
Serial Number : 72
Frequency : 1880.00 MHz
Peak Trans. Pwr : 0.300 W
Start Trans. Pwr : 0.300 W
Antenna Type : Helical
Antenna Posn. : Out
Phantom Type : Head
Phantom Posn. : Right Ear
Scan Type : SAR
Probe Name : PCTEST
Field Type : E Field
Orientation : 0 Degrees

Mixture Type = Brain
Mixture Dielectric Constant = 40.400
Mixture Conductivity = 1.620

Comment :
HYUNDAI PCS-MODE PHONE
CH 0600 Conducted 24.8 dBm
HYUNDAI PCS-MODE PHONE

Robot : PCTEST

Probe Offset = 0.20 cm
Sensor Factor = 0.0108
Conversion Factor = 0.550

PCTEST Amplifier Channel Settings : 0.309 0.361 0.421

Max Location : X = -0.500, Y = -0.500, Z = 0.000 (cm) Value = 22.398

Measured Values (volts) =
2.134E-002 1.472E-002 1.062E-002 8.005E-003 6.095E-003 4.708E-003
4.014E-003 3.292E-003 2.841E-003 2.617E-003 2.267E-003 2.203E-003
2.107E-003 2.110E-003 2.283E-003 2.224E-003 2.368E-003 2.462E-003
2.558E-003 2.712E-003 2.840E-003

Calc. Voltage @ Surface (Vs) = 0.0282

Voltage @ 1.00 cm (Vt) = 0.0076

Ave. Voltage (Vs+Vt)/2 = 0.0179

Ave. SAR over 1 g (mW/g) = 0.9129

File : c:/idx3/SYSTEM/SARMEAS3/data/Normal/01100930_ZOOM.VLT
Start : 9-Oct-101 05:24:31 pm End : 9-Oct-101 05:25:49 pm

Radio Type : HYUNDAI
Model Number : PX-25B
Serial Number : 72
Frequency : 1908.75 MHz
Peak Trans. Pwr : 0.300 W
Start Trans. Pwr : 0.300 W
Antenna Type : Helical
Antenna Posn. : In
Phantom Type : Head
Phantom Posn. : Right Ear
Scan Type : SAR
Probe Name : PCTEST
Field Type : E Field
Orientation : 0 Degrees

Mixture Type = Brain
Mixture Dielectric Constant = 40.400
Mixture Conductivity = 1.620

Comment :
HYUNDAI PCS-MODE PHONE
CH 1175 Conducted 24.8 dBm
HYUNDAI PCS-MODE PHONE

Robot : PCTEST

Probe Offset = 0.20 cm
Sensor Factor = 0.0108
Conversion Factor = 0.550

PCTEST Amplifier Channel Settings : 0.309 0.361 0.421

Max Location : X = -0.500, Y = -0.500, Z = 0.000 (cm) Value = 22.398

Measured Values (volts) =
1.852E-002 1.116E-002 7.853E-003 1.616E-003 4.519E-003 3.658E-003
3.008E-003 2.802E-003 2.447E-003 2.194E-003 2.401E-003 2.150E-003
2.244E-003 2.362E-003 2.516E-003 2.402E-003 2.420E-003 2.548E-003
2.633E-003 2.970E-003 2.904E-003

Calc. Voltage @ Surface (Vs) = 0.0262

Voltage @ 1.00 cm (Vt) = 0.0022

Ave. Voltage (Vs+Vt)/2 = 0.0142

Ave. SAR over 1 g (mW/g) = 0.7223

File : c:/idx3/SYSTEM/SARMEAS3/data/Normal/01100913_ZOOM.VLT
Start : 9-Oct-101 04:35:32 pm End : 9-Oct-101 04:53:20 pm

Radio Type : HYUNDAI
Model Number : PX-25B
Serial Number : 72
Frequency : 1908.75 MHz
Peak Trans. Pwr : 0.300 W
Start Trans. Pwr : 0.300 W
Antenna Type : Helical
Antenna Posn. : Out
Phantom Type : Head
Phantom Posn. : Right Ear
Scan Type : ZOOM/SAR
Probe Name : PCTEST
Field Type : E Field
Orientation : 0 Degrees

Mixture Type = Brain
Mixture Dielectric Constant = 40.400
Mixture Conductivity = 1.620

Comment :
HYUNDAI PCS-MODE PHONE
CH 1175 Conducted 24.8 dBm
HYUNDAI PCS-MODE PHONE

Robot : PCTEST

Probe Offset = 0.20 cm
Sensor Factor = 0.0108
Conversion Factor = 0.550

PCTEST Amplifier Channel Settings : 0.309 0.361 0.421

Max Location : X = -0.500, Y = -0.500, Z = 0.000 (cm) Value = 24.912

Measured Values (volts) =
2.486E-002 1.790E-002 1.414E-002 1.158E-002 9.620E-003 8.168E-003
7.099E-003 6.477E-003 5.945E-003 5.363E-003 5.241E-003 5.049E-003
4.800E-003 4.842E-003 4.897E-003 4.775E-003 4.857E-003 4.847E-003
4.990E-003 5.203E-003 5.264E-003

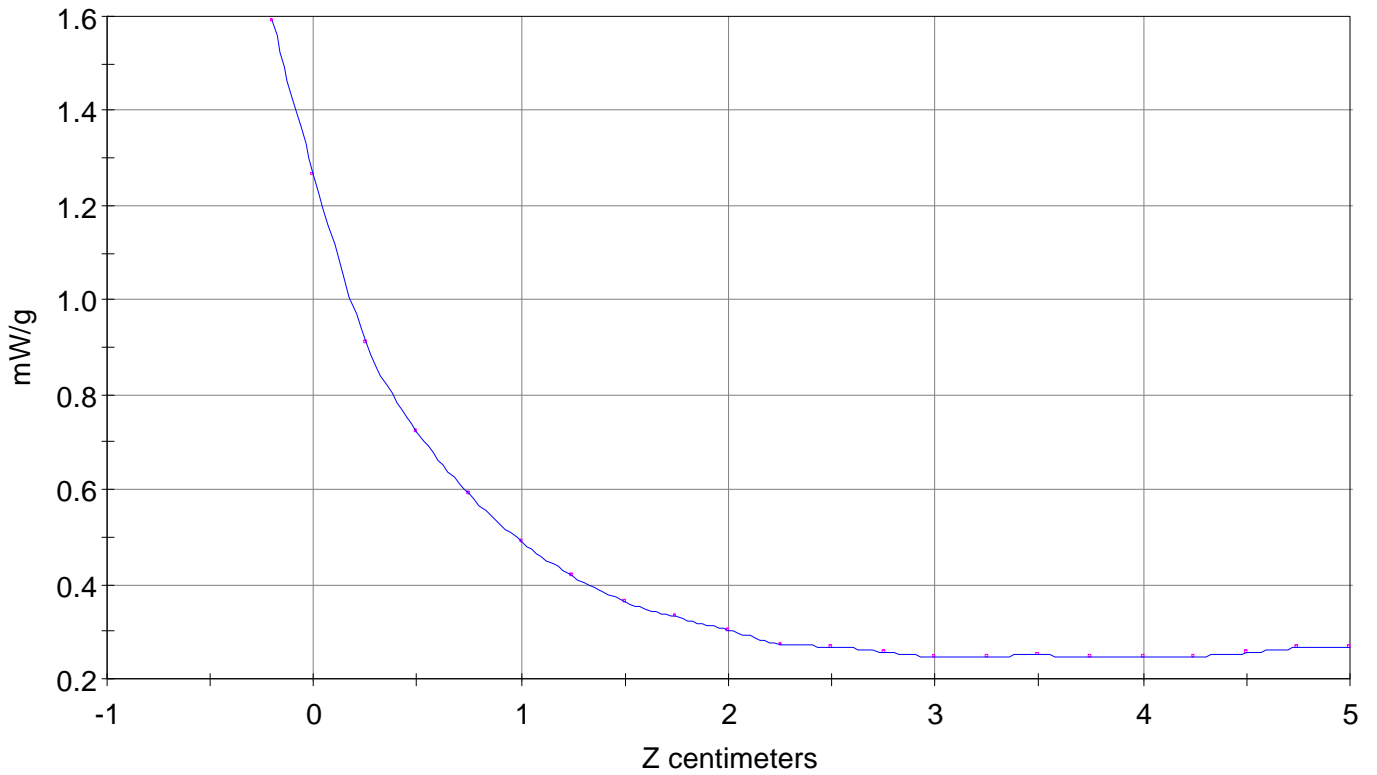
Calc. Voltage @ Surface (Vs) = 0.0312

Voltage @ 1.00 cm (Vt) = 0.0112

Ave. Voltage (Vs+Vt)/2 = 0.0212

Ave. SAR over 1 g (mW/g) = 1.0789

SAR Scan
File : 01100913_ZOOM
Start : 9-Oct-101 04:35:32 pm End : 9-Oct-101 04:53:20 pm
HYUNDAI/PX-25B/72;1908.75MHz;W;Helical/Out;
Head/Right Ear;ZOOM/SAR;PCTEST/E Field/0 DegreesBrain/40.400/1.620

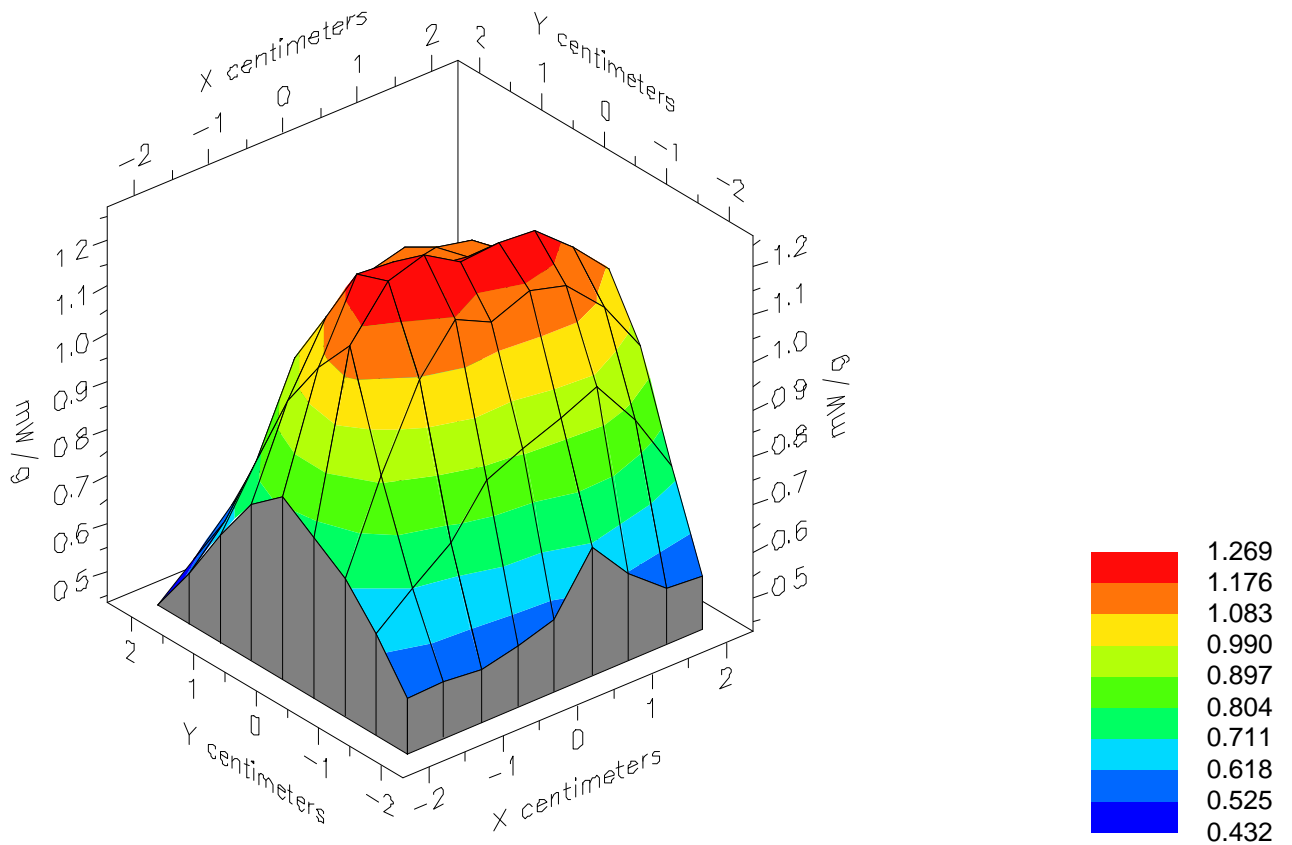


File : 01100913_ZOOM

Start : 9-Oct-101 04:35:32 pm End : 9-Oct-101 04:53:20 pm

HYUNDAI/PX-25B/72;1908.75MHz;W;Helical/Out;

Head/Right Ear;ZOOM/SAR;PCTEST/E Field/0 DegreesBrain/40.400/1.620

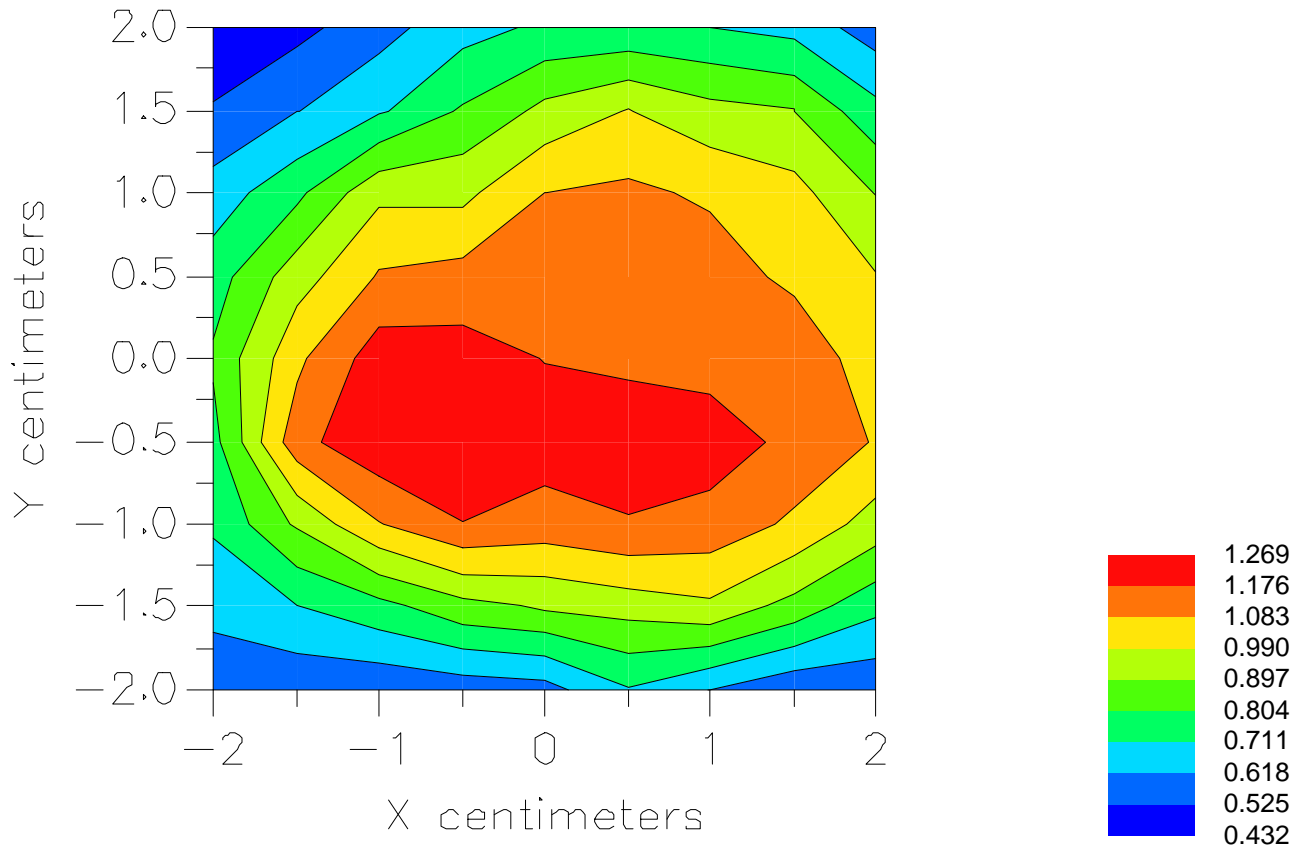


File : 01100913_ZOOM

Start : 9-Oct-101 04:35:32 pm End : 9-Oct-101 04:53:20 pm

HYUNDAI/PX-25B/72;1908.75MHz;W;Helical/Out;

Head/Right Ear;ZOOM/SAR;PCTEST/E Field/0 DegreesBrain/40.400/1.620



File : c:/idx3/SYSTEM/SARMEAS3/data/Normal/01102301_ZOOM.VLT
Start : 23-Oct-101 10:30:24 am End : 23-Oct-101 10:39:54 am

Radio Type : HYUNDAI
Model Number : PX-25B
Serial Number : 72
Frequency : 1908.75 MHz
Peak Trans. Pwr : 0.300 W
Start Trans. Pwr : 0.300 W
Antenna Type : Helical
Antenna Posn. : Out
Phantom Type : Head
Phantom Posn. : Left Ear
Scan Type : ZOOM/SAR
Probe Name : PCTEST
Field Type : E Field
Orientation : 0 Degrees

Mixture Type = Brain
Mixture Dielectric Constant = 40.400
Mixture Conductivity = 1.620

Comment :
HYUNDAI PCS-MODE PHONE
CH 1175 Conducted 24.8 dBm
HYUNDAI PCS-MODE PHONE - TILT

Robot : PCTEST

Probe Offset = 0.20 cm
Sensor Factor = 0.0108
Conversion Factor = 0.550

PCTEST Amplifier Channel Settings : 0.309 0.361 0.421

Max Location : X = -1.000, Y = -2.500, Z = 0.000 (cm) Value = 25.970

Measured Values (volts) =
2.510E-002 1.845E-002 1.367E-002 9.440E-003 7.269E-003 5.075E-003
3.955E-003 3.145E-003 2.469E-003 2.219E-003 1.900E-003 1.459E-003
1.413E-003 1.352E-003 1.212E-003 1.204E-003 1.339E-003 1.164E-003
1.617E-003 1.106E-003 1.708E-003

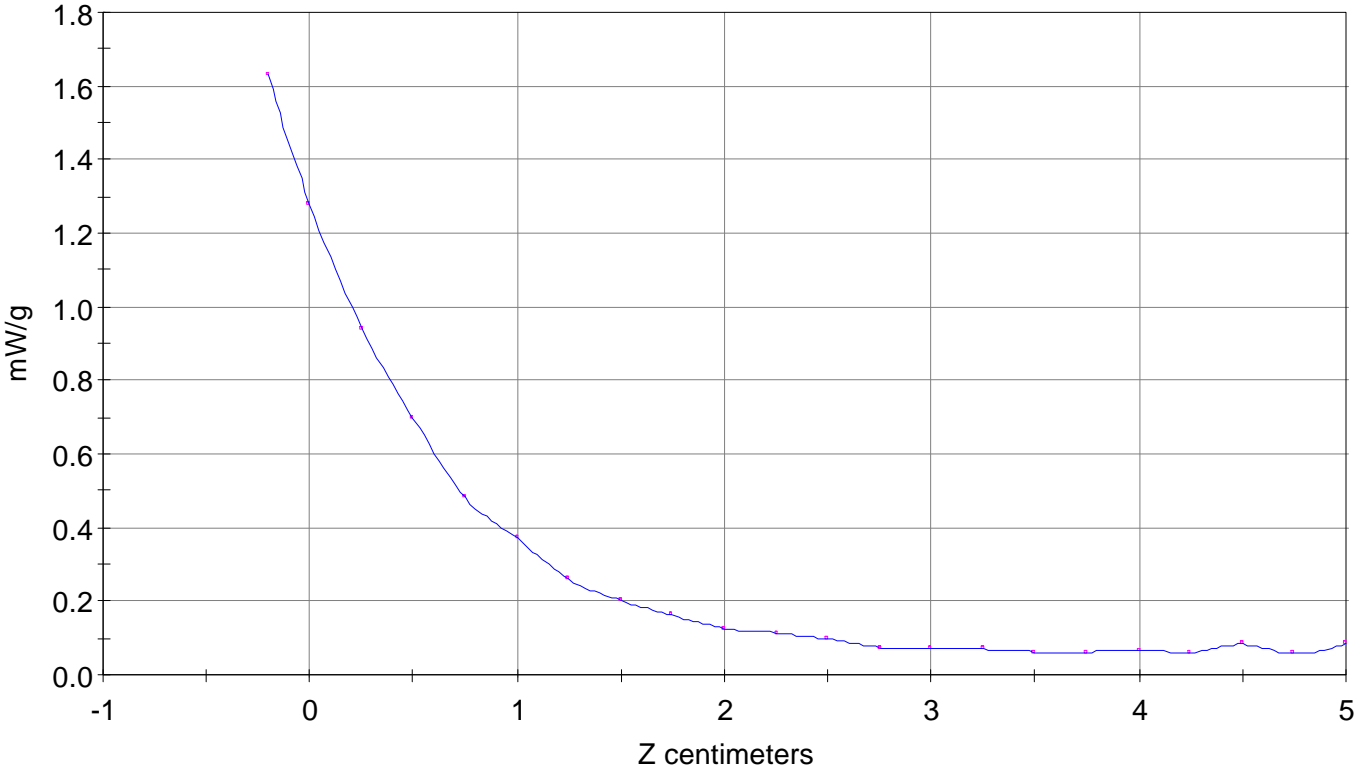
Calc. Voltage @ Surface (Vs) = 0.0320

Voltage @ 1.00 cm (Vt) = 0.0090

Ave. Voltage (Vs+Vt)/2 = 0.0205

Ave. SAR over 1 g (mW/g) = 1.0444

SAR Scan
File : 01102301_ZOOM
Start : 23-Oct-101 10:30:24 am End : 23-Oct-101 10:39:54 am
HYUNDAI/PX-25B/72;1908.75MHz;W;Helical/Out;
Head/Left Ear;ZOOM/SAR;PCTEST/E Field/0 DegreesBrain/40.400/1.620

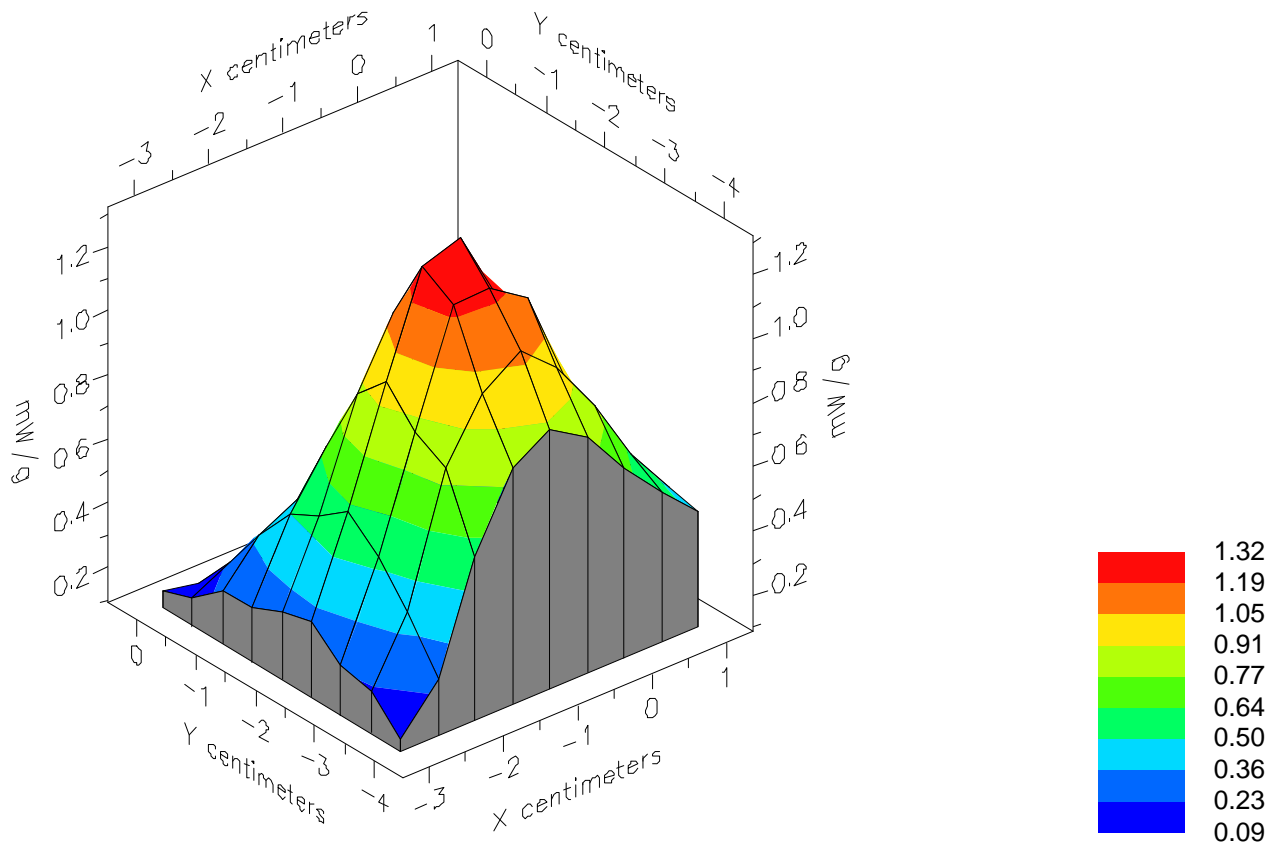


File : 01102301_ZOOM

Start : 23-Oct-101 10:30:24 am End : 23-Oct-101 10:39:54 am

HYUNDAI/PX-25B/72;1908.75MHz;W;Helical/Out;

Head/Left Ear;ZOOM/SAR;PCTEST/E Field/0 DegreesBrain/40.400/1.620



File : 01102301_ZOOM

Start : 23-Oct-101 10:30:24 am End : 23-Oct-101 10:39:54 am

HYUNDAI/PX-25B/72;1908.75MHz;W;Helical/Out;

Head/Left Ear;ZOOM/SAR;PCTEST/E Field/0 DegreesBrain/40.400/1.620

