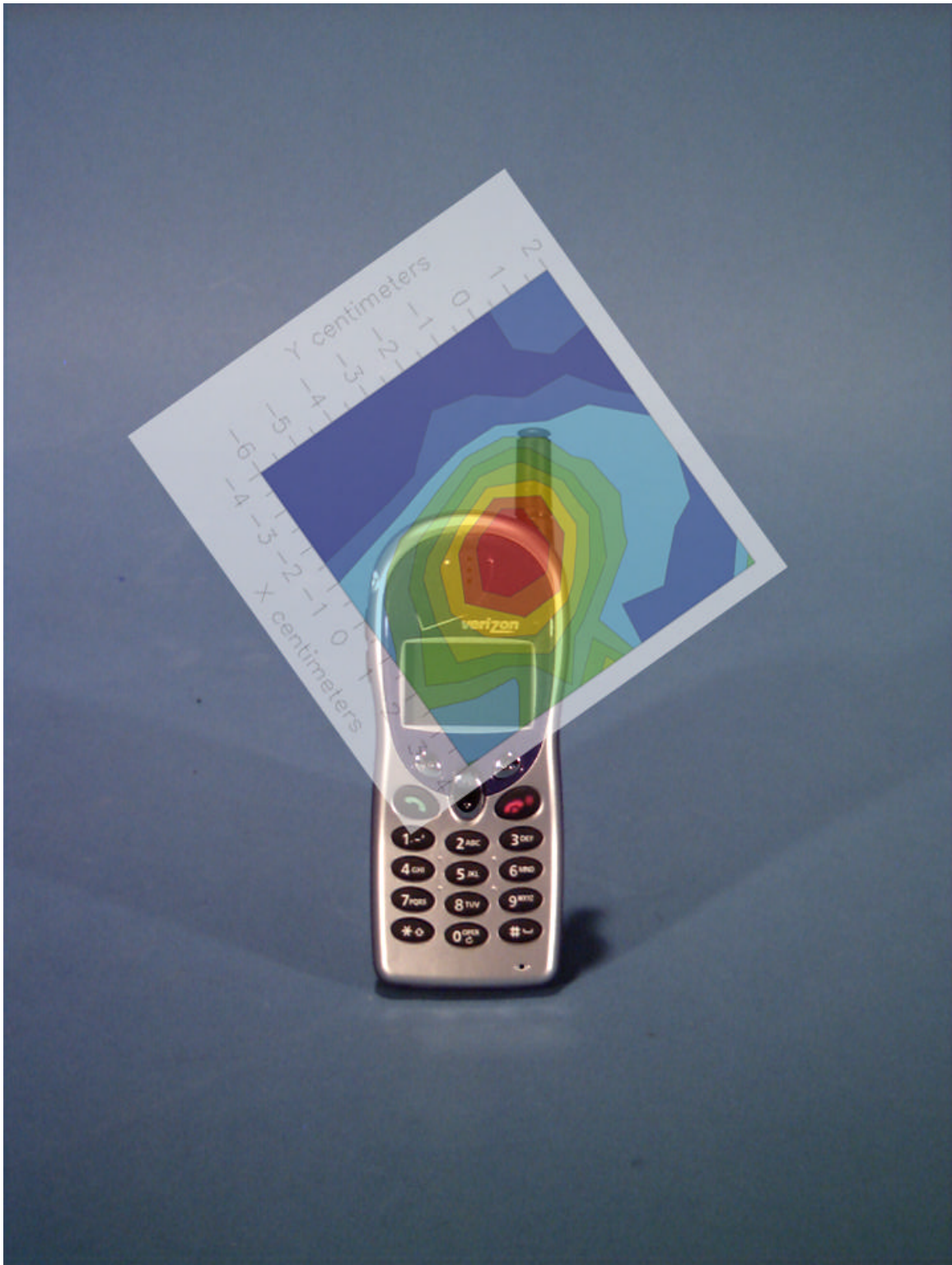


Peak SAR Location

Head SAR



File : c:/idx3/SYSTEM/SARMEAS3/data/Normal/01072309_ZOOM.VLT
Start : 23-Jul-101 12:36:23 pm End : 23-Jul-101 12:45:41 pm

Radio Type : HYUNDAI
Model Number : PX-21B
Serial Number : 20
Frequency : 1851.25 MHz
Peak Trans. Pwr : 0.280 W
Start Trans. Pwr : 0.280 W
Antenna Type : Helical
Antenna Posn. : In
Phantom Type : Head
Phantom Posn. : Left Ear
Scan Type : ZOOM/SAR
Probe Name : PCTEST
Field Type : E Field
Orientation : 0 Degrees

Mixture Type = Brain
Mixture Dielectric Constant = 40.400
Mixture Conductivity = 1.620

Comment :
HYUNDAI PCS MODE PHONE
CH 0025 24.5 dBm Conducted
HYUNDAI PCS MODE PHONE

Robot : PCTEST

Probe Offset = 0.25 cm
Sensor Factor = 0.0108
Conversion Factor = 1.201

PCTEST Amplifier Channel Settings : 0.245 0.231 0.224

Max Location : X = 0.250, Y = -2.250, Z = 0.000 (cm) Value = 15.104

Measured Values (volts) =
1.472E-002 1.077E-002 8.061E-003 5.724E-003 4.231E-003 2.983E-003
2.235E-003 1.714E-003 1.253E-003 1.013E-003 7.194E-004 5.101E-004
3.521E-004 2.513E-004 2.473E-004 2.593E-004 1.907E-004 1.317E-004
4.775E-005 6.336E-005 4.601E-005

Calc. Voltage @ Surface (Vs) = 0.0199

Voltage @ 1.00 cm (Vt) = 0.0057

Ave. Voltage (Vs+Vt)/2 = 0.0128

Ave. SAR over 1 g (mW/g) = 1.4247

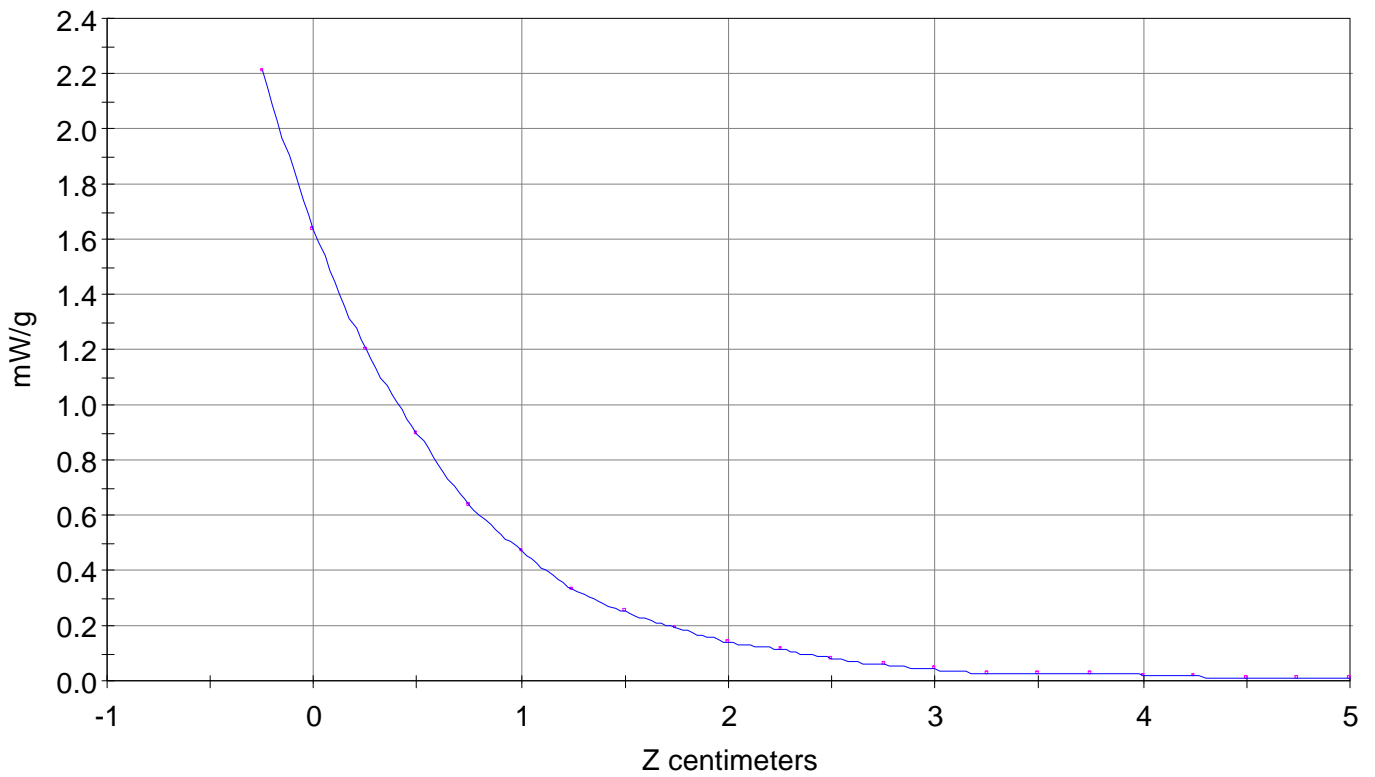
SAR Scan

File : 01072309_ZOOM

Start : 23-Jul-101 12:36:23 pm End : 23-Jul-101 12:45:41 pm

HYUNDAI/PX-21B/20;1851.25MHz;W;Helical/In;

Head/Left Ear;ZOOM/SAR;PCTEST/E Field/0 DegreesBrain/40.400/1.620

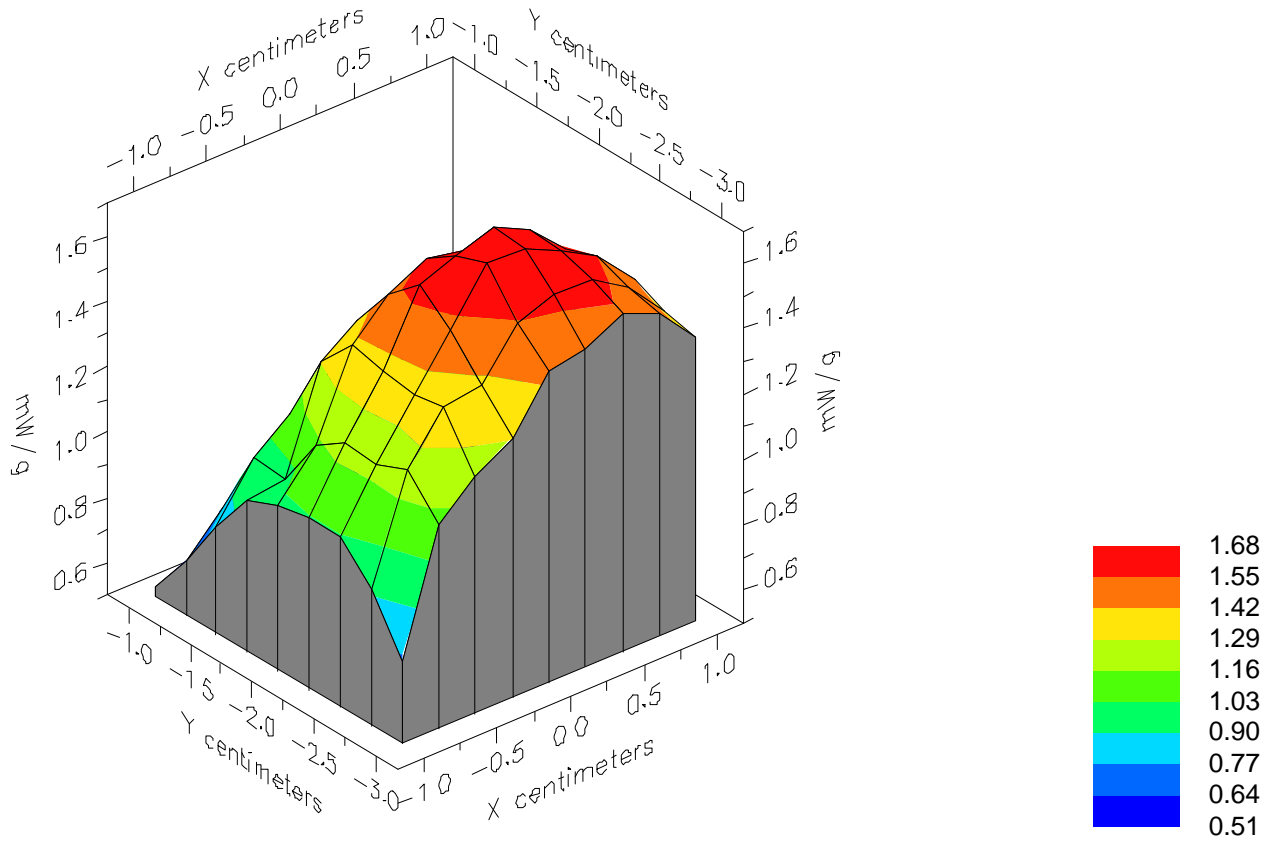


File : 01072309_ZOOM

Start : 23-Jul-101 12:36:23 pm End : 23-Jul-101 12:45:41 pm

HYUNDAI/PX-21B/20;1851.25MHz;W;Helical/In;

Head/Left Ear;ZOOM/SAR;PCTEST/E Field/0 DegreesBrain/40.400/1.620

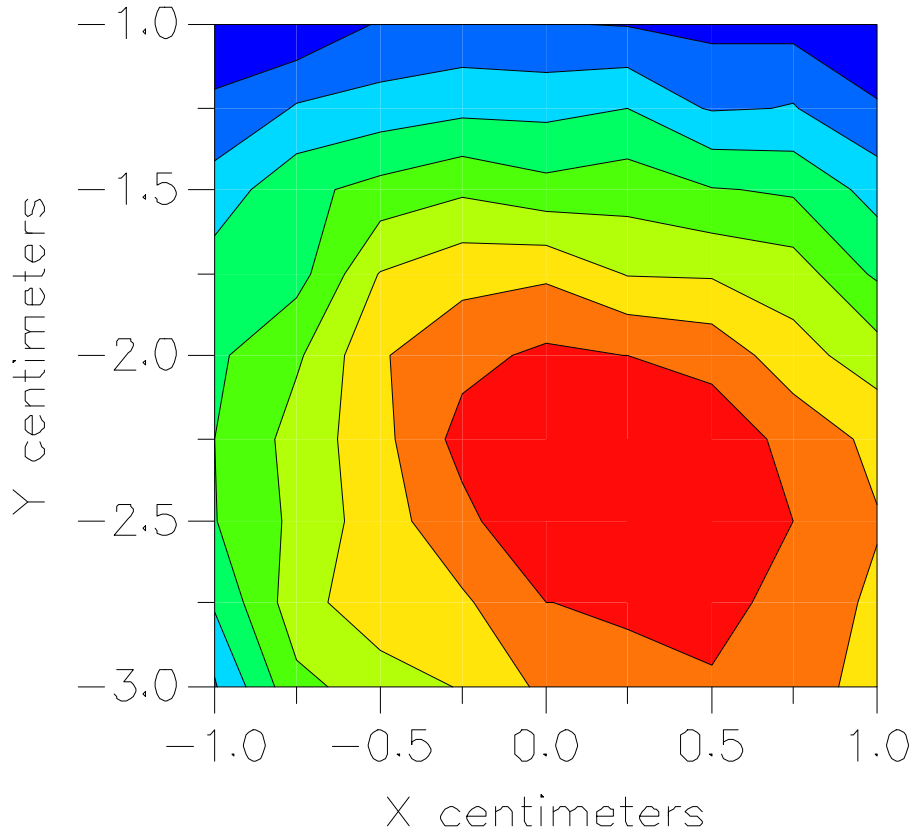


File : 01072309_ZOOM

Start : 23-Jul-101 12:36:23 pm End : 23-Jul-101 12:45:41 pm

HYUNDAI/PX-21B/20;1851.25MHz;W;Helical/In;

Head/Left Ear;ZOOM/SAR;PCTEST/E Field/0 DegreesBrain/40.400/1.620



File : c:/idx3/SYSTEM/SARMEAS3/data/Normal/01072308_ZOOM.VLT
Start : 23-Jul-101 12:25:08 pm End : 23-Jul-101 12:34:27 pm

Radio Type : HYUNDAI
Model Number : PX-21B
Serial Number : 20
Frequency : 1851.25 MHz
Peak Trans. Pwr : 0.280 W
Start Trans. Pwr : 0.280 W
Antenna Type : Helical
Antenna Posn. : Out
Phantom Type : Head
Phantom Posn. : Left Ear
Scan Type : ZOOM/SAR
Probe Name : PCTEST
Field Type : E Field
Orientation : 0 Degrees

Mixture Type = Brain
Mixture Dielectric Constant = 40.400
Mixture Conductivity = 1.620

Comment :
HYUNDAI PCS MODE PHONE
CH 0025 24.5 dBm Conducted
HYUNDAI PCS MODE PHONE

Robot : PCTEST

Probe Offset = 0.25 cm
Sensor Factor = 0.0108
Conversion Factor = 1.201

PCTEST Amplifier Channel Settings : 0.245 0.231 0.224

Max Location : X = 0.250, Y = -2.250, Z = 0.000 (cm) Value = 14.091

Measured Values (volts) =
1.365E-002 9.544E-003 6.936E-003 4.820E-003 3.545E-003 2.591E-003
2.040E-003 1.532E-003 1.160E-003 8.622E-004 5.705E-004 4.707E-004
3.670E-004 2.931E-004 2.679E-004 2.419E-004 2.051E-004 1.283E-004
6.835E-005 8.055E-005 1.073E-004

Calc. Voltage @ Surface (Vs) = 0.0192

Voltage @ 1.00 cm (Vt) = 0.0048

Ave. Voltage (Vs+Vt)/2 = 0.0120

Ave. SAR over 1 g (mW/g) = 1.3330

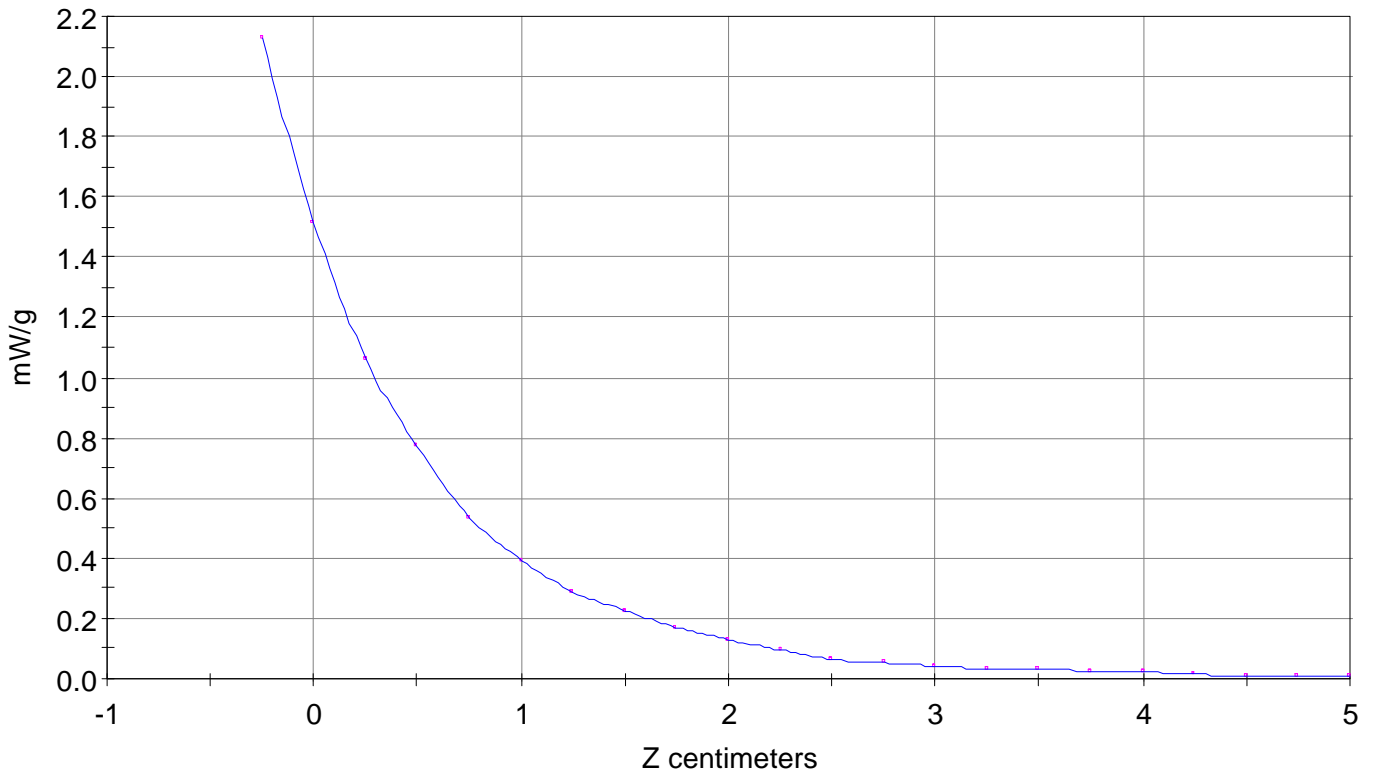
SAR Scan

File : 01072308_ZOOM

Start : 23-Jul-101 12:25:08 pm End : 23-Jul-101 12:34:27 pm

HYUNDAI/PX-21B/20;1851.25MHz;W;Helical/Out;

Head/Left Ear;ZOOM/SAR;PCTEST/E Field/0 DegreesBrain/40.400/1.620

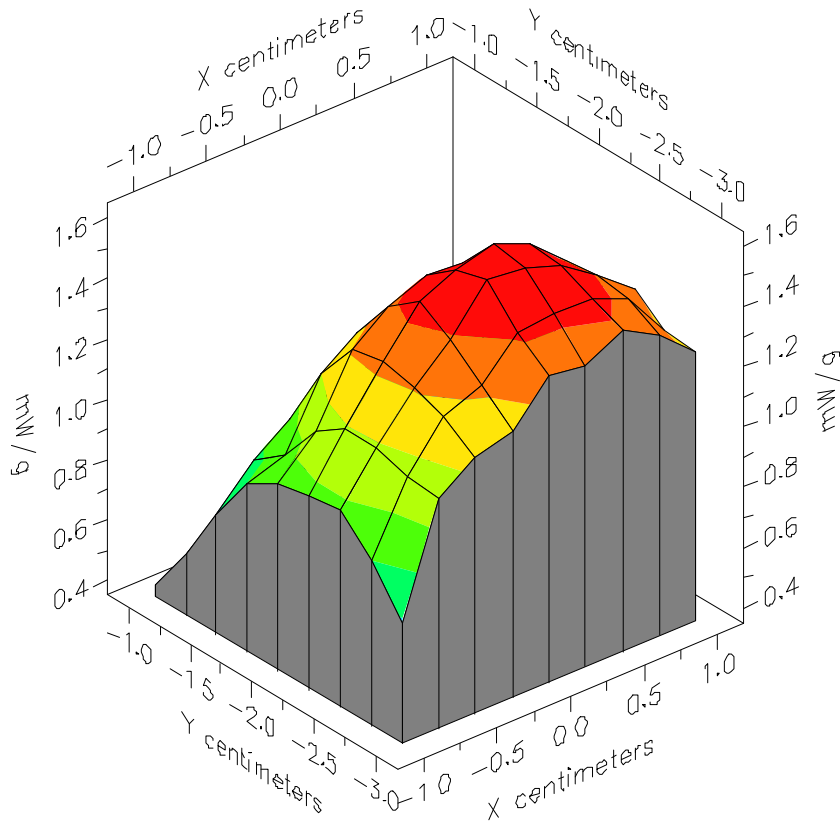


File : 01072308_ZOOM

Start : 23-Jul-101 12:25:08 pm End : 23-Jul-101 12:34:27 pm

HYUNDAI/PX-21B/20;1851.25MHz;W;Helical/Out;

Head/Left Ear;ZOOM/SAR;PCTEST/E Field/0 DegreesBrain/40.400/1.620

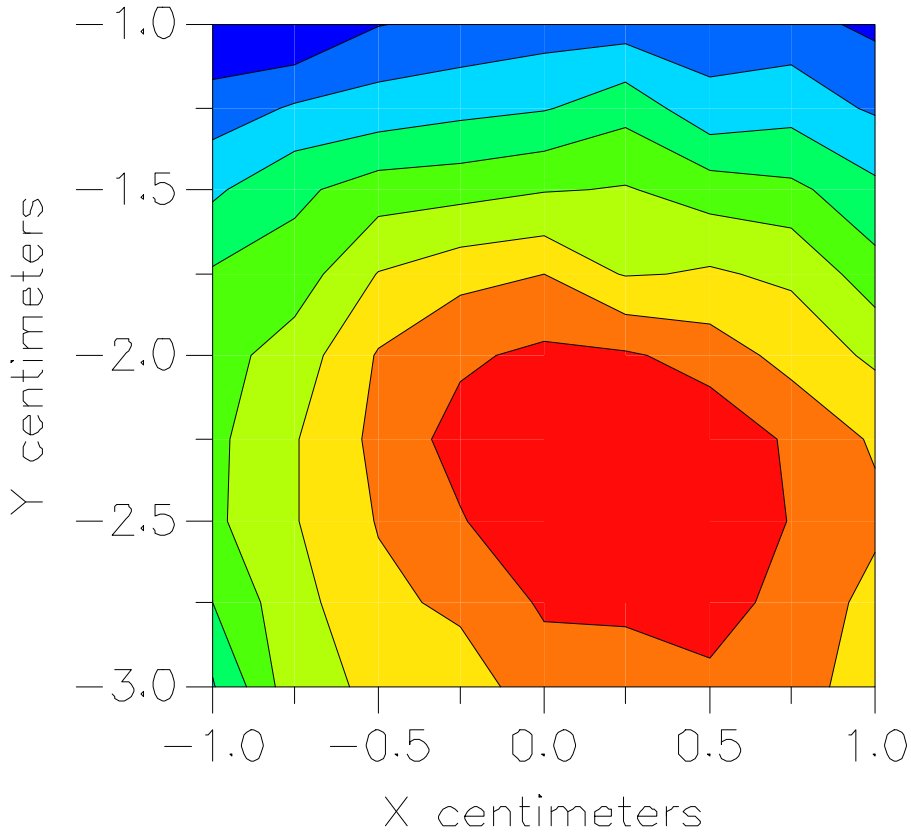


File : 01072308_ZOOM

Start : 23-Jul-101 12:25:08 pm End : 23-Jul-101 12:34:27 pm

HYUNDAI/PX-21B/20;1851.25MHz;W;Helical/Out;

Head/Left Ear;ZOOM/SAR;PCTEST/E Field/0 DegreesBrain/40.400/1.620



File : c:/idx3/SYSTEM/SARMEAS3/data/Normal/01072307_ZOOM.VLT
Start : 23-Jul-101 12:12:50 pm End : 23-Jul-101 12:22:08 pm

Radio Type : HYUNDAI
Model Number : PX-21B
Serial Number : 20
Frequency : 1880.00 MHz
Peak Trans. Pwr : 0.280 W
Start Trans. Pwr : 0.280 W
Antenna Type : Helical
Antenna Posn. : In
Phantom Type : Head
Phantom Posn. : Left Ear
Scan Type : ZOOM/SAR
Probe Name : PCTEST
Field Type : E Field
Orientation : 0 Degrees

Mixture Type = Brain
Mixture Dielectric Constant = 40.400
Mixture Conductivity = 1.620

Comment :
HYUNDAI PCS MODE PHONE
CH 0600 24.5 dBm Conducted
HYUNDAI PCS MODE PHONE

Robot : PCTEST

Probe Offset = 0.25 cm
Sensor Factor = 0.0108
Conversion Factor = 1.201

PCTEST Amplifier Channel Settings : 0.245 0.231 0.224

Max Location : X = 0.250, Y = -2.750, Z = 0.000 (cm) Value = 11.253

Measured Values (volts) =
1.032E-002 7.938E-003 5.564E-003 4.350E-003 3.084E-003 2.330E-003
1.681E-003 1.325E-003 9.676E-004 7.406E-004 5.456E-004 3.892E-004
2.529E-004 2.083E-004 1.885E-004 1.595E-004 1.563E-004 1.027E-004
4.604E-005 8.547E-005 6.021E-005

Calc. Voltage @ Surface (Vs) = 0.0141

Voltage @ 1.00 cm (Vt) = 0.0044

Ave. Voltage (Vs+Vt)/2 = 0.0092

Ave. SAR over 1 g (mW/g) = 1.0244

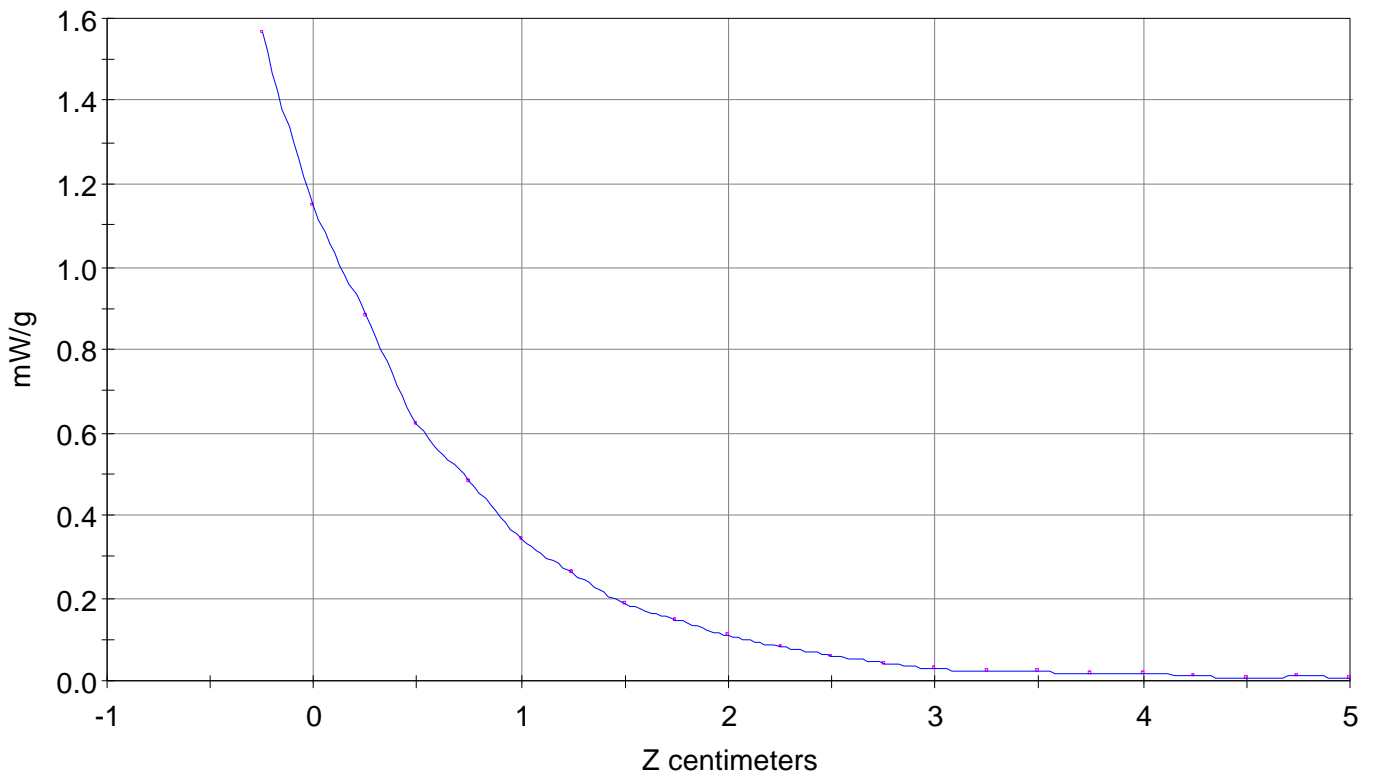
SAR Scan

File : 01072307_ZOOM

Start : 23-Jul-101 12:12:50 pm End : 23-Jul-101 12:22:08 pm

HYUNDAI/PX-21B/20;1880.00MHz;W;Helical/In;

Head/Left Ear;ZOOM/SAR;PCTEST/E Field/0 DegreesBrain/40.400/1.620

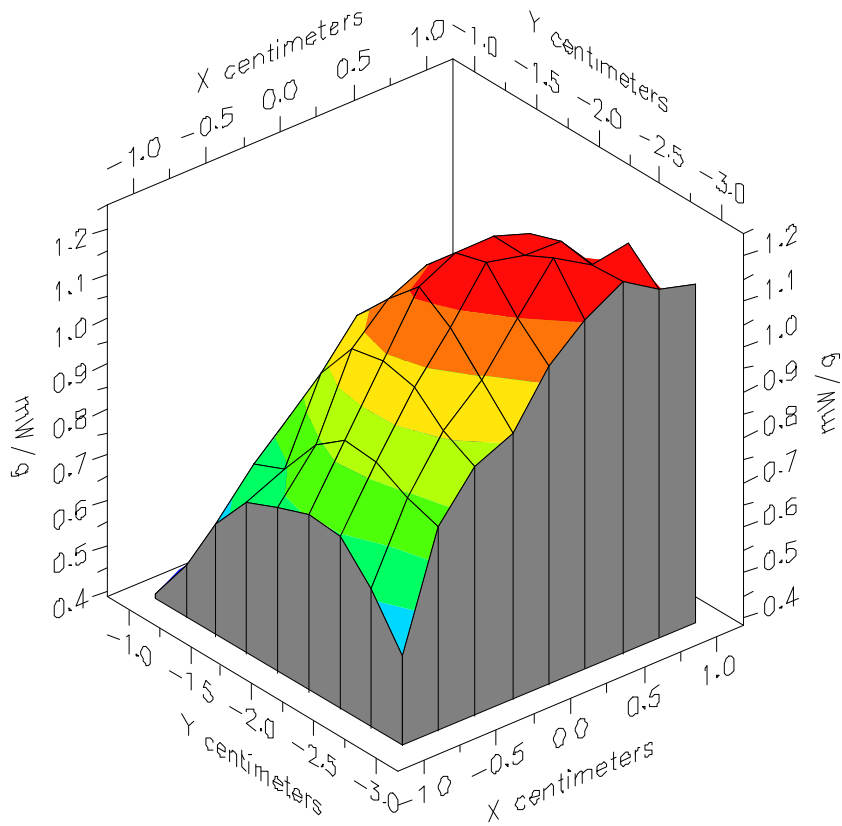


File : 01072307_ZOOM

Start : 23-Jul-101 12:12:50 pm End : 23-Jul-101 12:22:08 pm

HYUNDAI/PX-21B/20;1880.00MHz;W;Helical/In;

Head/Left Ear;ZOOM/SAR;PCTEST/E Field/0 DegreesBrain/40.400/1.620

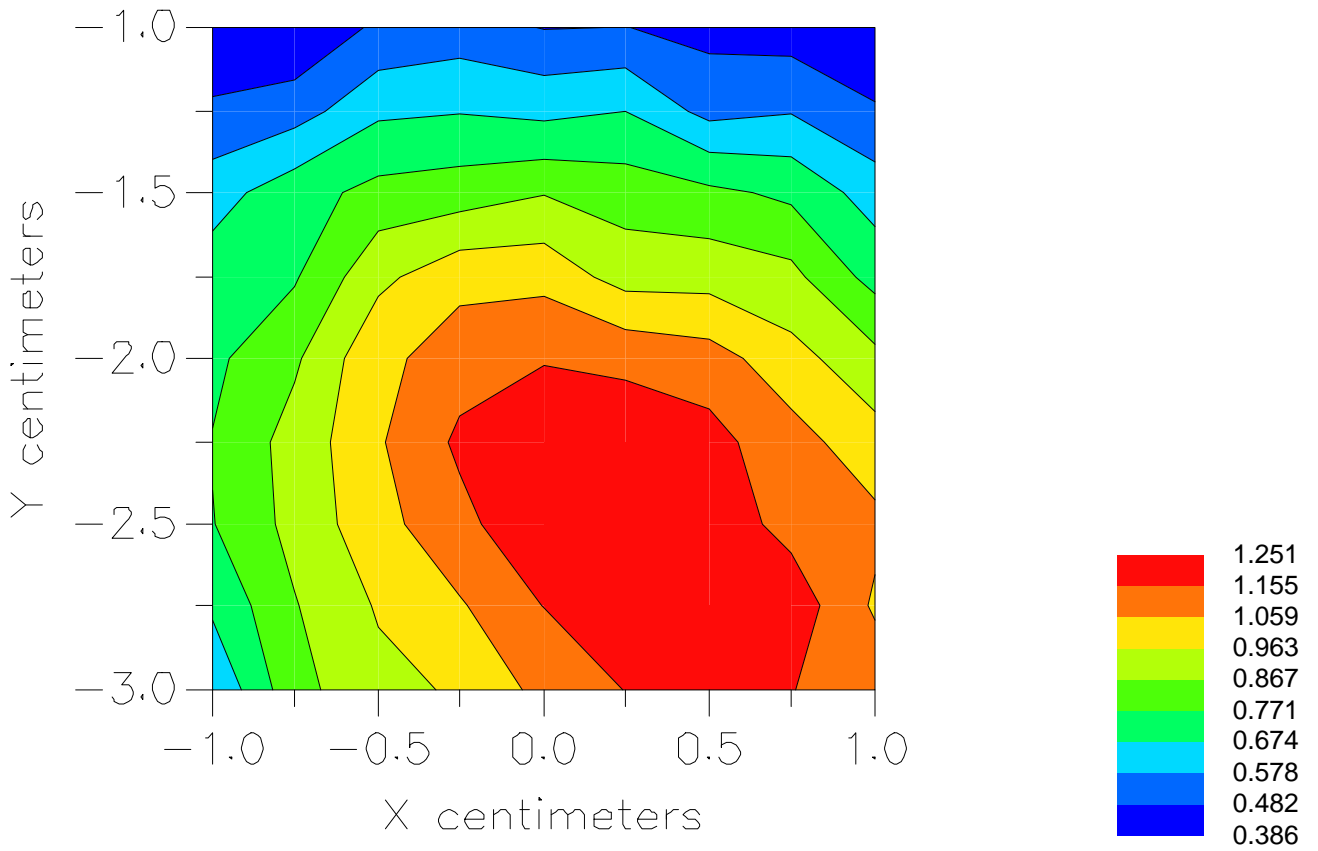


File : 01072307_ZOOM

Start : 23-Jul-101 12:12:50 pm End : 23-Jul-101 12:22:08 pm

HYUNDAI/PX-21B/20;1880.00MHz;W;Helical/In;

Head/Left Ear;ZOOM/SAR;PCTEST/E Field/0 DegreesBrain/40.400/1.620



File : c:/idx3/SYSTEM/SARMEAS3/data/Normal/01072306_ZOOM.VLT
Start : 23-Jul-101 12:01:49 pm End : 23-Jul-101 12:11:08 pm

Radio Type : HYUNDAI
Model Number : PX-21B
Serial Number : 20
Frequency : 1880.00 MHz
Peak Trans. Pwr : 0.280 W
Start Trans. Pwr : 0.280 W
Antenna Type : Helical
Antenna Posn. : Out
Phantom Type : Head
Phantom Posn. : Left Ear
Scan Type : ZOOM/SAR
Probe Name : PCTEST
Field Type : E Field
Orientation : 0 Degrees

Mixture Type = Brain
Mixture Dielectric Constant = 40.400
Mixture Conductivity = 1.620

Comment :
HYUNDAI PCS MODE PHONE
CH 0600 24.5 dBm Conducted
HYUNDAI PCS MODE PHONE

Robot : PCTEST

Probe Offset = 0.25 cm
Sensor Factor = 0.0108
Conversion Factor = 1.201

PCTEST Amplifier Channel Settings : 0.245 0.231 0.224

Max Location : X = 0.250, Y = -2.500, Z = 0.000 (cm) Value = 10.544

Measured Values (volts) =
1.037E-002 7.753E-003 5.350E-003 4.009E-003 2.825E-003 2.097E-003
1.526E-003 1.195E-003 9.127E-004 6.632E-004 4.923E-004 3.621E-004
2.536E-004 2.302E-004 2.050E-004 1.756E-004 1.289E-004 6.218E-005
4.187E-005 7.430E-005 1.099E-004

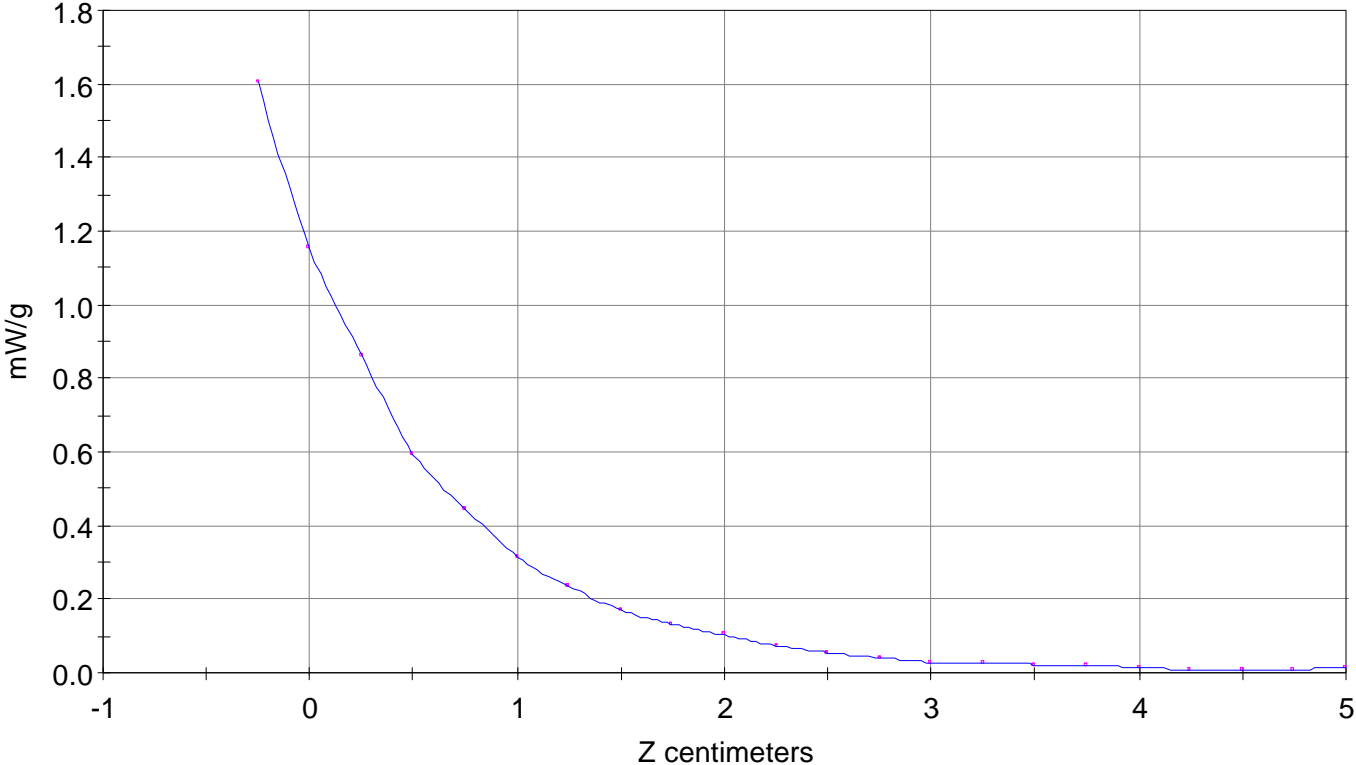
Calc. Voltage @ Surface (Vs) = 0.0144

Voltage @ 1.00 cm (Vt) = 0.0040

Ave. Voltage (Vs+Vt)/2 = 0.0092

Ave. SAR over 1 g (mW/g) = 1.0263

SAR Scan
File : 01072306_ZOOM
Start : 23-Jul-101 12:01:49 pm End : 23-Jul-101 12:11:08 pm
HYUNDAI/PX-21B/20;1880.00MHz;W;Helical/Out;
Head/Left Ear;ZOOM/SAR;PCTEST/E Field/0 DegreesBrain/40.400/1.620

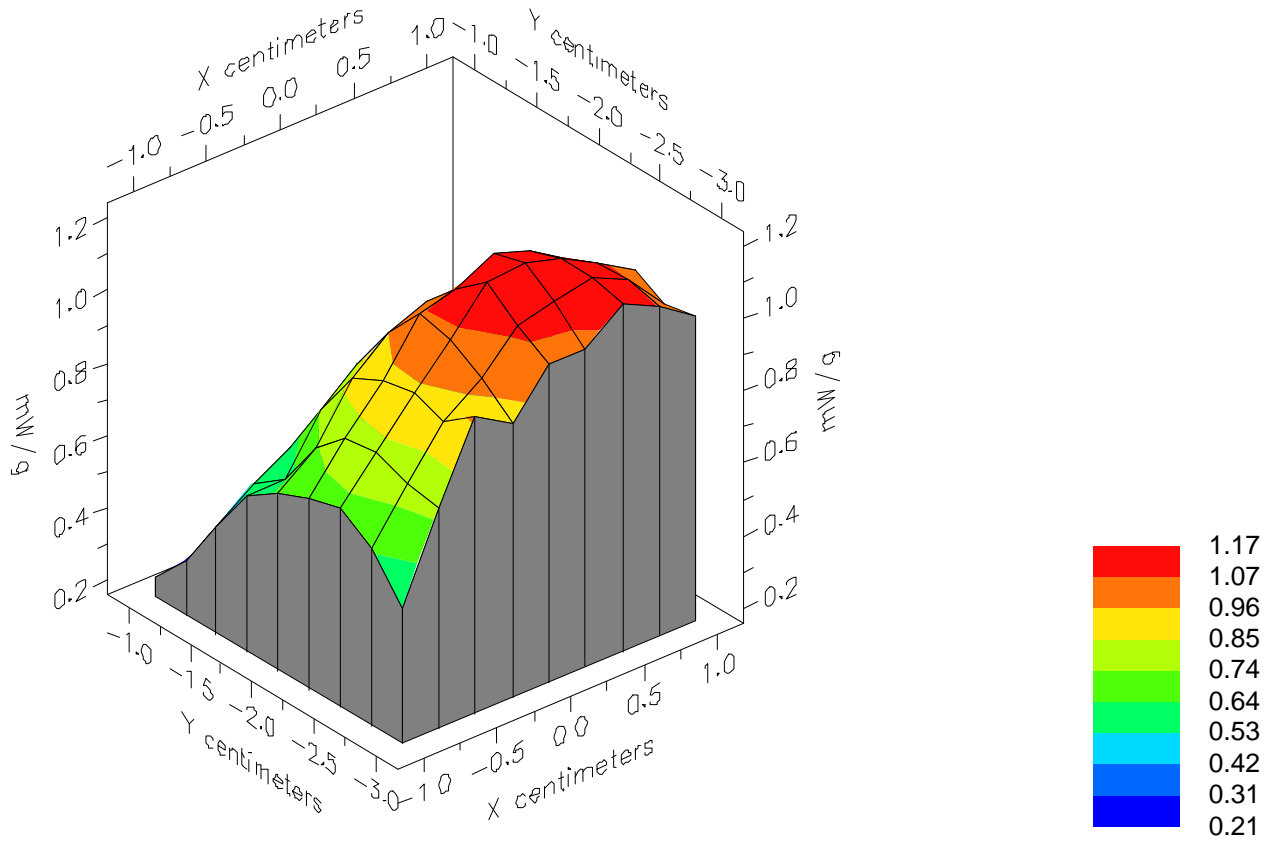


File : 01072306_ZOOM

Start : 23-Jul-101 12:01:49 pm End : 23-Jul-101 12:11:08 pm

HYUNDAI/PX-21B/20;1880.00MHz;W;Helical/Out;

Head/Left Ear;ZOOM/SAR;PCTEST/E Field/0 DegreesBrain/40.400/1.620

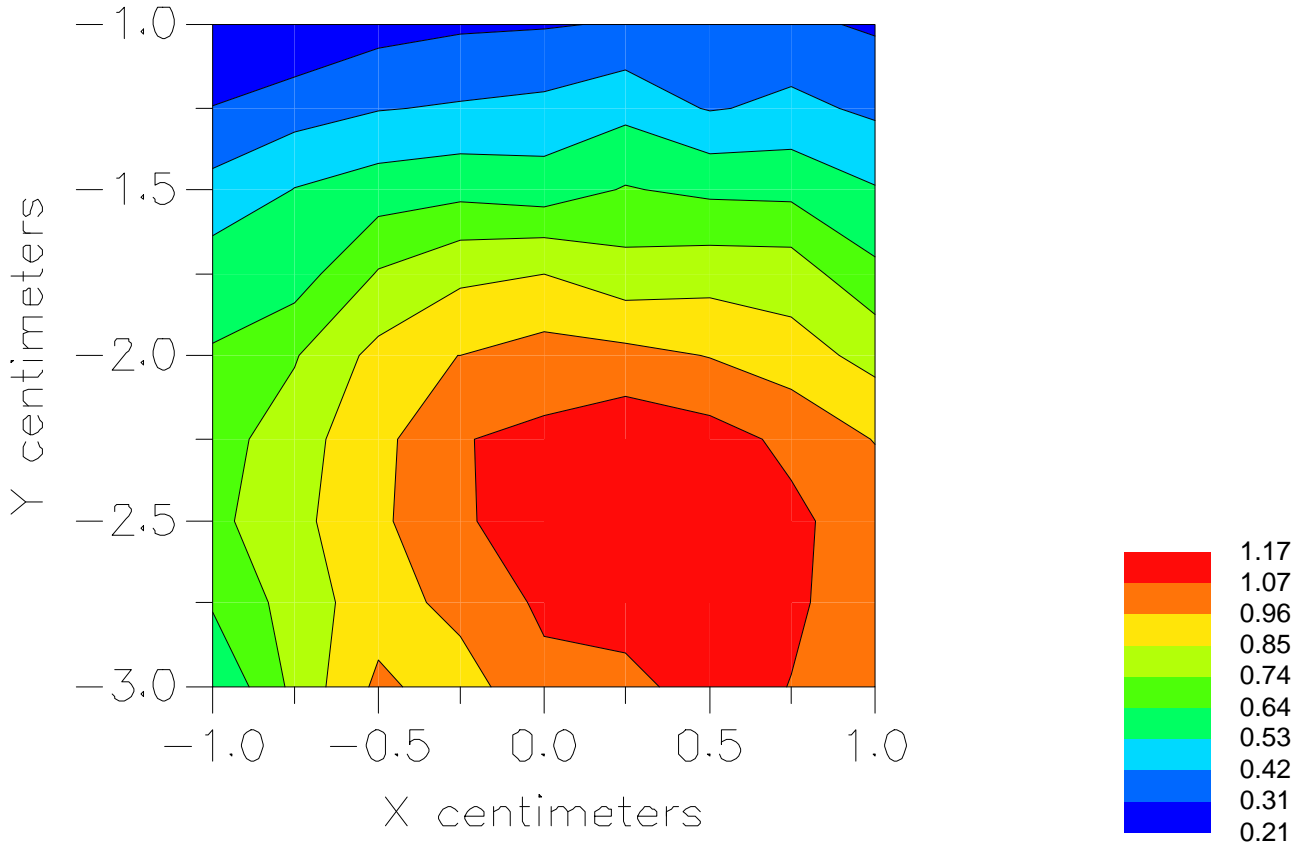


File : 01072306_ZOOM

Start : 23-Jul-101 12:01:49 pm End : 23-Jul-101 12:11:08 pm

HYUNDAI/PX-21B/20;1880.00MHz;W;Helical/Out;

Head/Left Ear;ZOOM/SAR;PCTEST/E Field/0 DegreesBrain/40.400/1.620



File : c:/idx3/SYSTEM/SARMEAS3/data/Normal/01072305_ZOOM.VLT
Start : 23-Jul-101 11:48:44 am End : 23-Jul-101 11:58:01 am

Radio Type : HYUNDAI
Model Number : PX-21B
Serial Number : 20
Frequency : 1908.75 MHz
Peak Trans. Pwr : 0.280 W
Start Trans. Pwr : 0.280 W
Antenna Type : Helical
Antenna Posn. : In
Phantom Type : Head
Phantom Posn. : Left Ear
Scan Type : ZOOM/SAR
Probe Name : PCTEST
Field Type : E Field
Orientation : 0 Degrees

Mixture Type = Brain
Mixture Dielectric Constant = 40.400
Mixture Conductivity = 1.620

Comment :
HYUNDAI PCS MODE PHONE
CH 1175 24.5 dBm Conducted
HYUNDAI PCS MODE PHONE

Robot : PCTEST

Probe Offset = 0.25 cm
Sensor Factor = 0.0108
Conversion Factor = 1.201

PCTEST Amplifier Channel Settings : 0.245 0.231 0.224

Max Location : X = -0.250, Y = -2.500, Z = 0.000 (cm) Value = 11.596

Measured Values (volts) =
8.899E-003 6.674E-003 5.165E-003 3.791E-003 2.851E-003 2.150E-003
1.629E-003 1.200E-003 8.962E-004 6.972E-004 5.229E-004 3.762E-004
2.901E-004 2.236E-004 1.521E-004 1.663E-004 1.191E-004 1.492E-004
1.067E-004 7.566E-005 1.021E-004

Calc. Voltage @ Surface (Vs) = 0.0117

Voltage @ 1.00 cm (Vt) = 0.0038

Ave. Voltage (Vs+Vt)/2 = 0.0077

Ave. SAR over 1 g (mW/g) = 0.8604

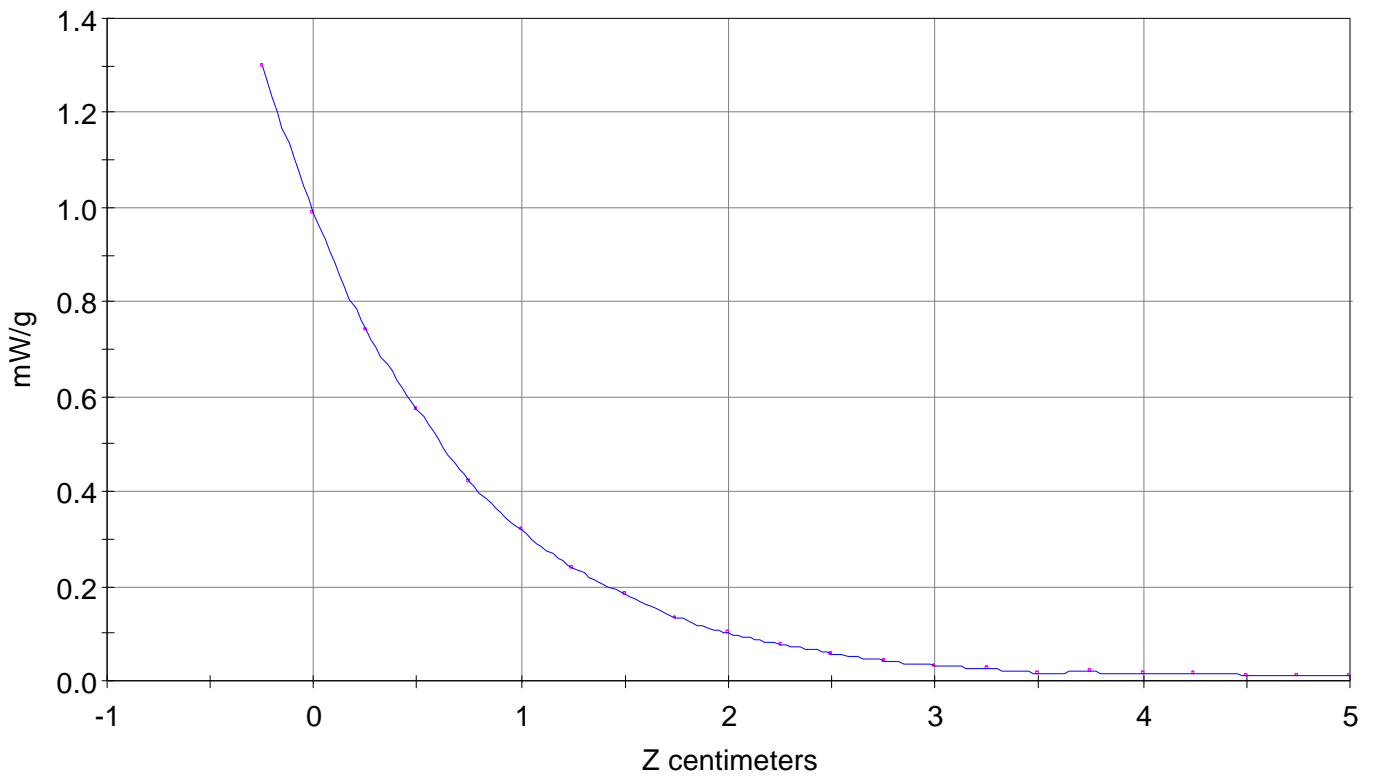
SAR Scan

File : 01072305_ZOOM

Start : 23-Jul-101 11:48:44 am End : 23-Jul-101 11:58:01 am

HYUNDAI/PX-21B/20;1908.75MHz;W;Helical/In;

Head/Left Ear;ZOOM/SAR;PCTEST/E Field/0 DegreesBrain/40.400/1.620

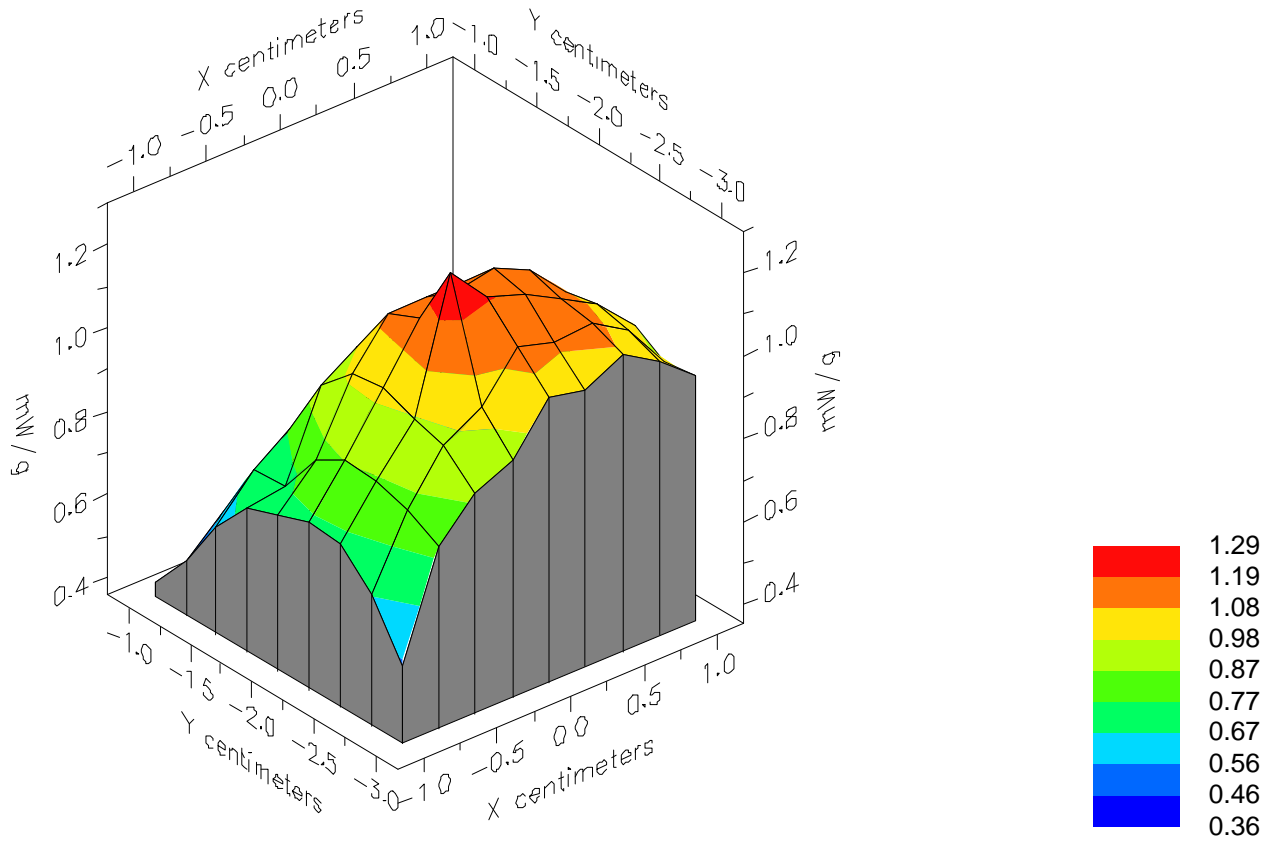


File : 01072305_ZOOM

Start : 23-Jul-101 11:48:44 am End : 23-Jul-101 11:58:01 am

HYUNDAI/PX-21B/20;1908.75MHz;W;Helical/In;

Head/Left Ear;ZOOM/SAR;PCTEST/E Field/0 DegreesBrain/40.400/1.620

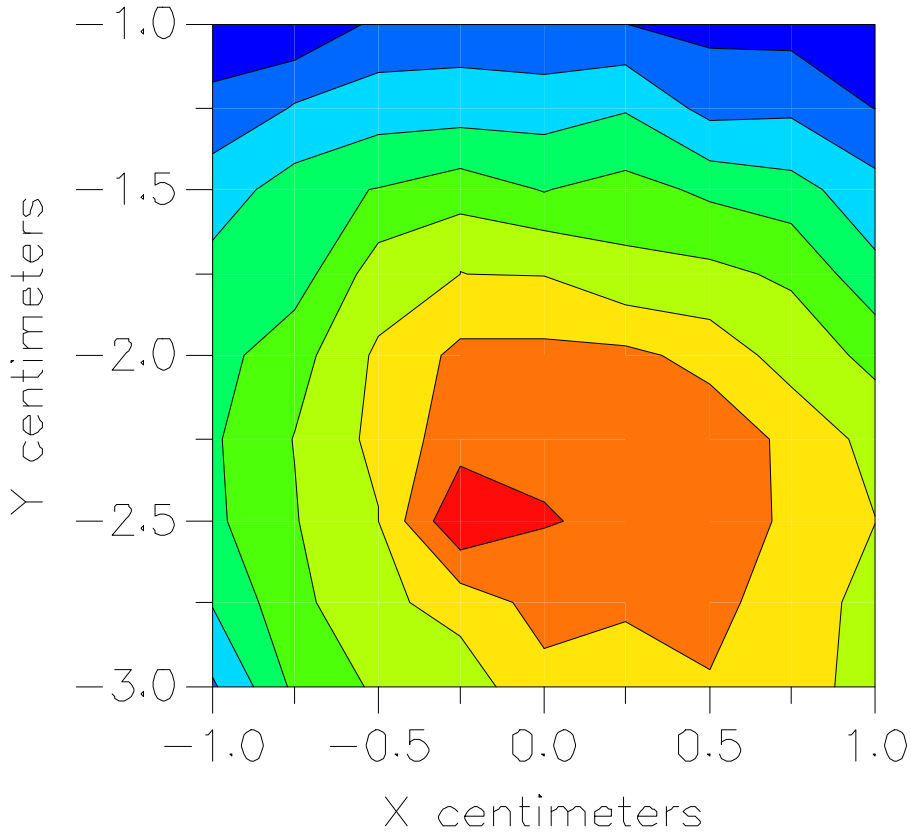


File : 01072305_ZOOM

Start : 23-Jul-101 11:48:44 am End : 23-Jul-101 11:58:01 am

HYUNDAI/PX-21B/20;1908.75MHz;W;Helical/In;

Head/Left Ear;ZOOM/SAR;PCTEST/E Field/0 DegreesBrain/40.400/1.620



File : c:/idx3/SYSTEM/SARMEAS3/data/Normal/01072304_ZOOM.VLT
Start : 23-Jul-101 11:37:19 am End : 23-Jul-101 11:46:36 am

Radio Type : HYUNDAI
Model Number : PX-21B
Serial Number : 20
Frequency : 1908.75 MHz
Peak Trans. Pwr : 0.280 W
Start Trans. Pwr : 0.280 W
Antenna Type : Helical
Antenna Posn. : Out
Phantom Type : Head
Phantom Posn. : Left Ear
Scan Type : ZOOM/SAR
Probe Name : PCTEST
Field Type : E Field
Orientation : 0 Degrees

Mixture Type = Brain
Mixture Dielectric Constant = 40.400
Mixture Conductivity = 1.620

Comment :
HYUNDAI PCS MODE PHONE
CH 1175 24.5 dBm Conducted
HYUNDAI PCS MODE PHONE

Robot : PCTEST

Probe Offset = 0.25 cm
Sensor Factor = 0.0108
Conversion Factor = 1.201

PCTEST Amplifier Channel Settings : 0.245 0.231 0.224

Max Location : X = 0.000, Y = -2.500, Z = 0.000 (cm) Value = 9.518

Measured Values (volts) =
8.793E-003 6.078E-003 4.383E-003 3.294E-003 2.398E-003 1.816E-003
1.283E-003 1.020E-003 7.605E-004 5.387E-004 3.710E-004 3.057E-004
2.311E-004 1.781E-004 1.751E-004 1.421E-004 1.064E-004 7.211E-005
3.691E-005 3.638E-005 5.472E-005

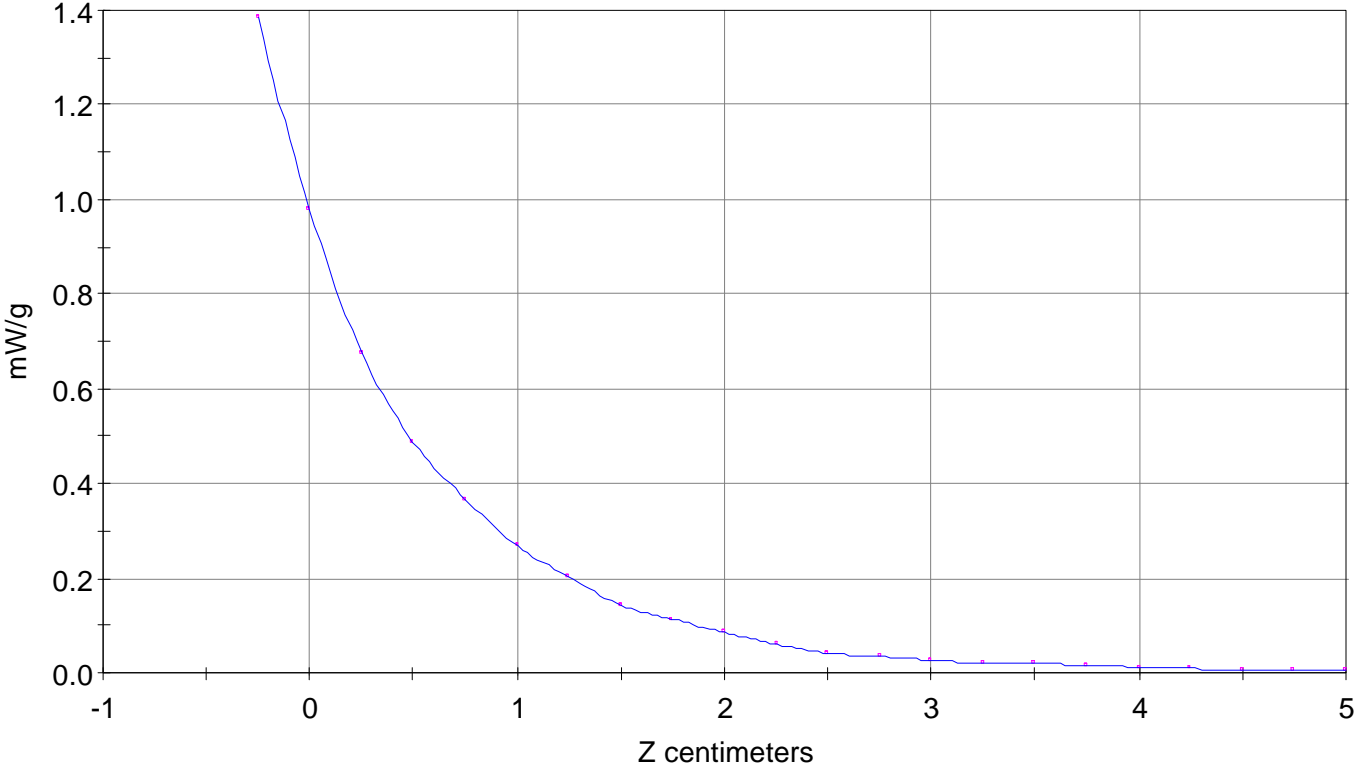
Calc. Voltage @ Surface (Vs) = 0.0125

Voltage @ 1.00 cm (Vt) = 0.0033

Ave. Voltage (Vs+Vt)/2 = 0.0079

Ave. SAR over 1 g (mW/g) = 0.8758

SAR Scan
File : 01072304_ZOOM
Start : 23-Jul-101 11:37:19 am End : 23-Jul-101 11:46:36 am
HYUNDAI/PX-21B/20;1908.75MHz;W;Helical/Out;
Head/Left Ear;ZOOM/SAR;PCTEST/E Field/0 DegreesBrain/40.400/1.620

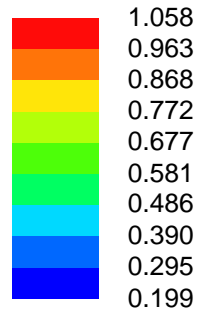
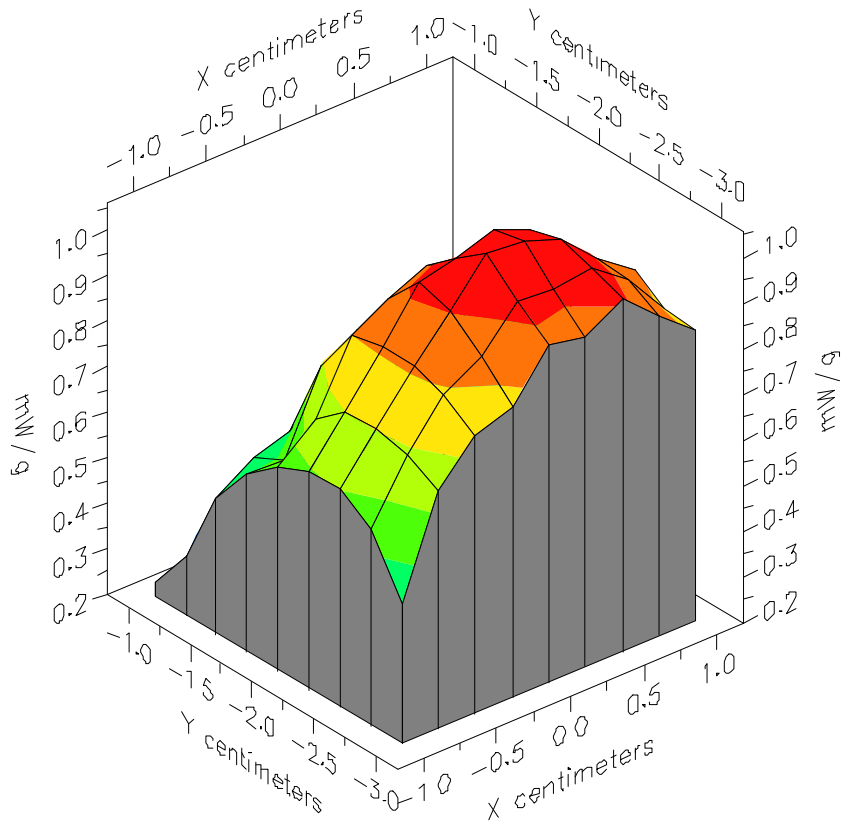


File : 01072304_ZOOM

Start : 23-Jul-101 11:37:19 am End : 23-Jul-101 11:46:36 am

HYUNDAI/PX-21B/20;1908.75MHz;W;Helical/Out;

Head/Left Ear;ZOOM/SAR;PCTEST/E Field/0 DegreesBrain/40.400/1.620

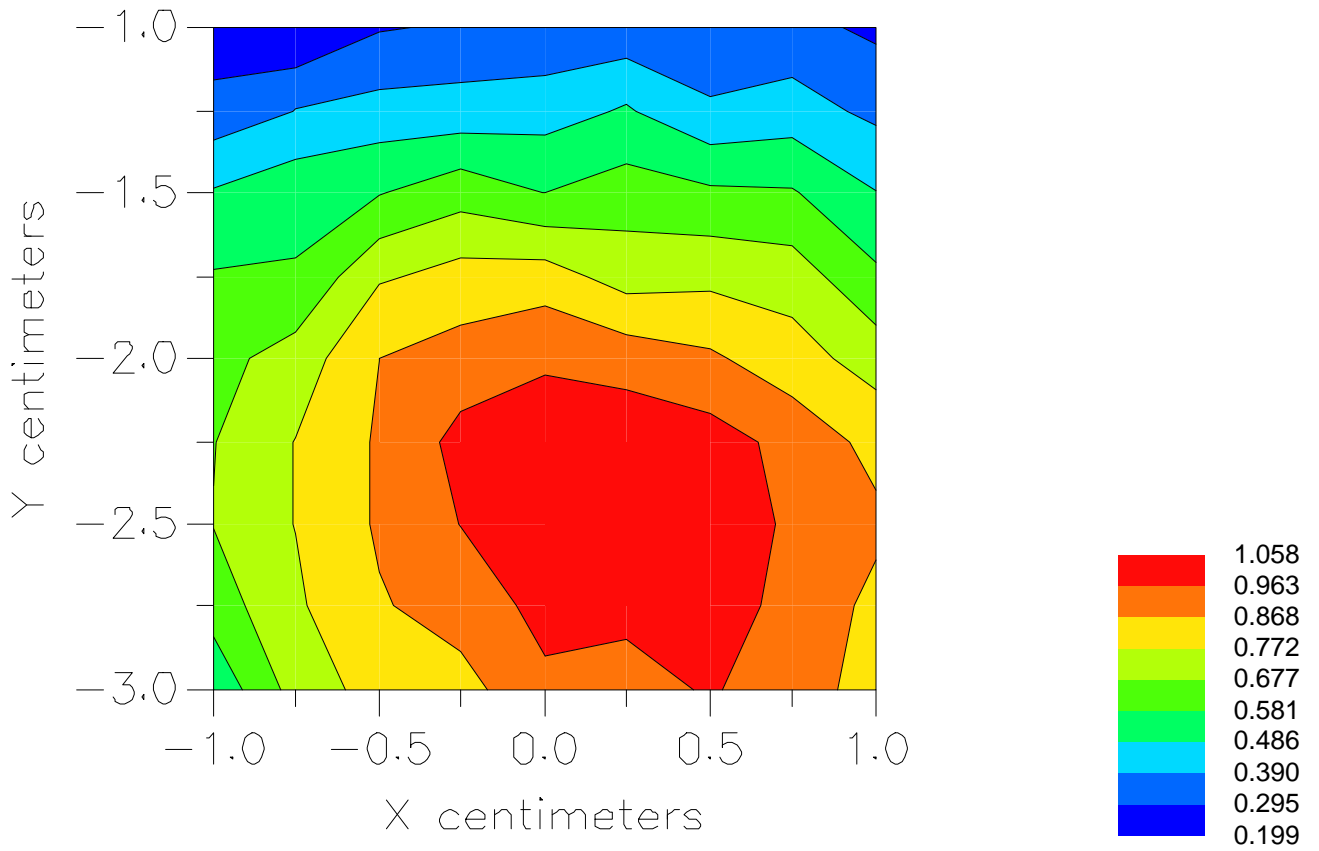


File : 01072304_ZOOM

Start : 23-Jul-101 11:37:19 am End : 23-Jul-101 11:46:36 am

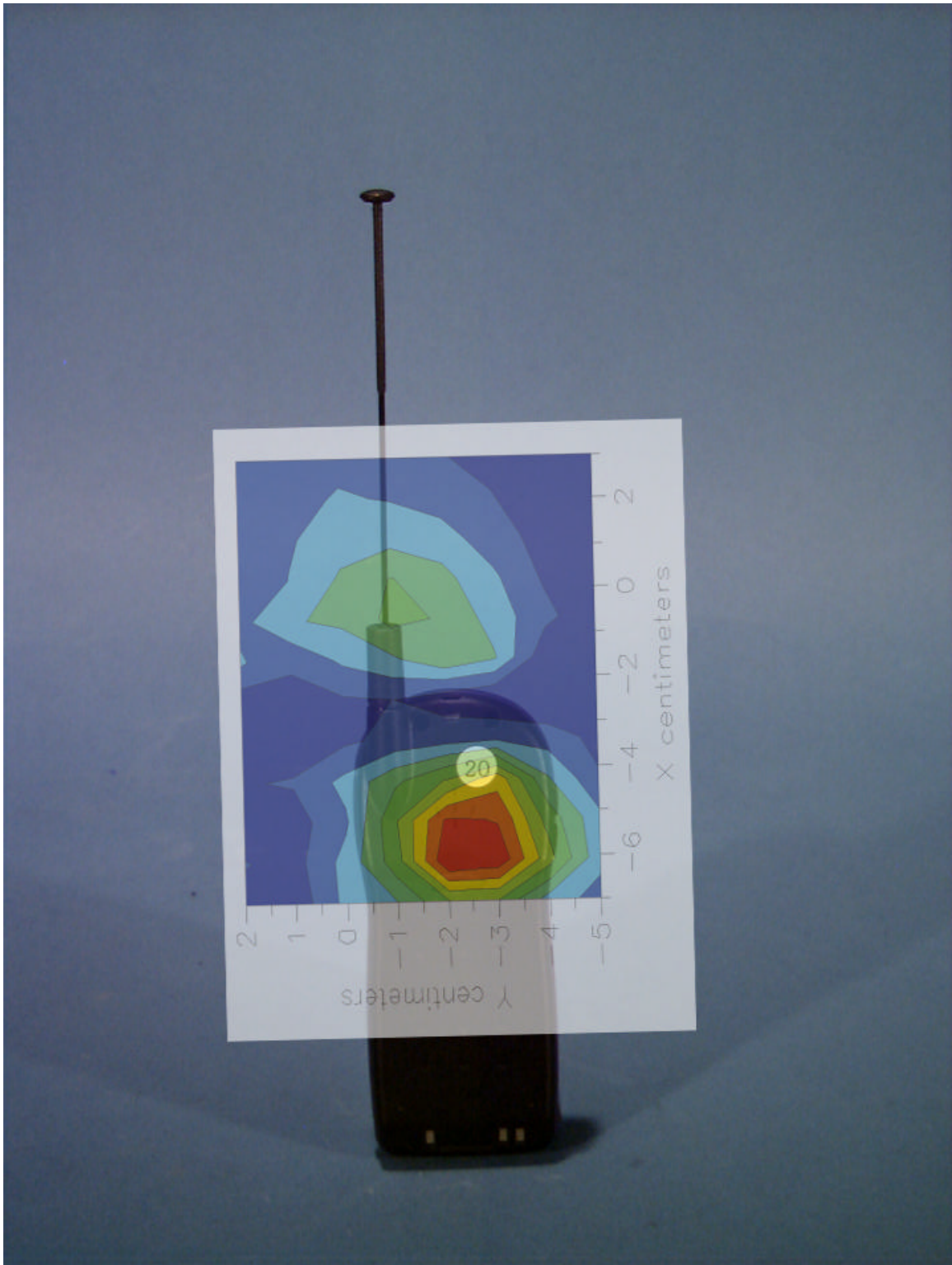
HYUNDAI/PX-21B/20;1908.75MHz;W;Helical/Out;

Head/Left Ear;ZOOM/SAR;PCTEST/E Field/0 DegreesBrain/40.400/1.620



Peak SAR Location

Body SAR



File : c:/idx3/SYSTEM/SARMEAS3/data/Normal/01072431_ZOOM.VLT
Start : 24-Jul-101 05:10:49 pm End : 24-Jul-101 05:23:44 pm

Radio Type : HYUNDAI
Model Number : PX-21B
Serial Number : 20
Frequency : 1851.25 MHz
Peak Trans. Pwr : 0.280 W
Start Trans. Pwr : 0.280 W
Antenna Type : Helical
Antenna Posn. : In
Phantom Type : Body
Phantom Posn. : Abdomen
Scan Type : ZOOM/SAR
Probe Name : PCTEST
Field Type : E Field
Orientation : 0 Degrees

Mixture Type = Muscle
Mixture Dielectric Constant = 54.200
Mixture Conductivity = 1.450

Comment :
HYUNDAI PCS-MODE PHONE
CH 0025 24.5 dBm Conducted
HYUNDAI PCS-MODE PHONE - BODY SAR

Robot : PCTEST

Probe Offset = 0.25 cm
Sensor Factor = 0.0108
Conversion Factor = 1.378

PCTEST Amplifier Channel Settings : 0.245 0.231 0.224

Max Location : X = -1.000, Y = -1.750, Z = 0.000 (cm) Value = 3.6713

Measured Values (volts) =
2.611E-003 2.303E-003 1.906E-003 1.674E-003 1.601E-003 1.413E-003
1.274E-003 1.144E-003 1.110E-003 1.031E-003 9.544E-004 9.157E-004
8.412E-004 7.731E-004 7.458E-004 6.818E-004 7.129E-004 6.806E-004
6.763E-004 6.914E-004 6.481E-004

Calc. Voltage @ Surface (Vs) = 0.0031

Voltage @ 1.00 cm (Vt) = 0.0017

Ave. Voltage (Vs+Vt)/2 = 0.0024

Ave. SAR over 1 g (mW/g) = 0.3018

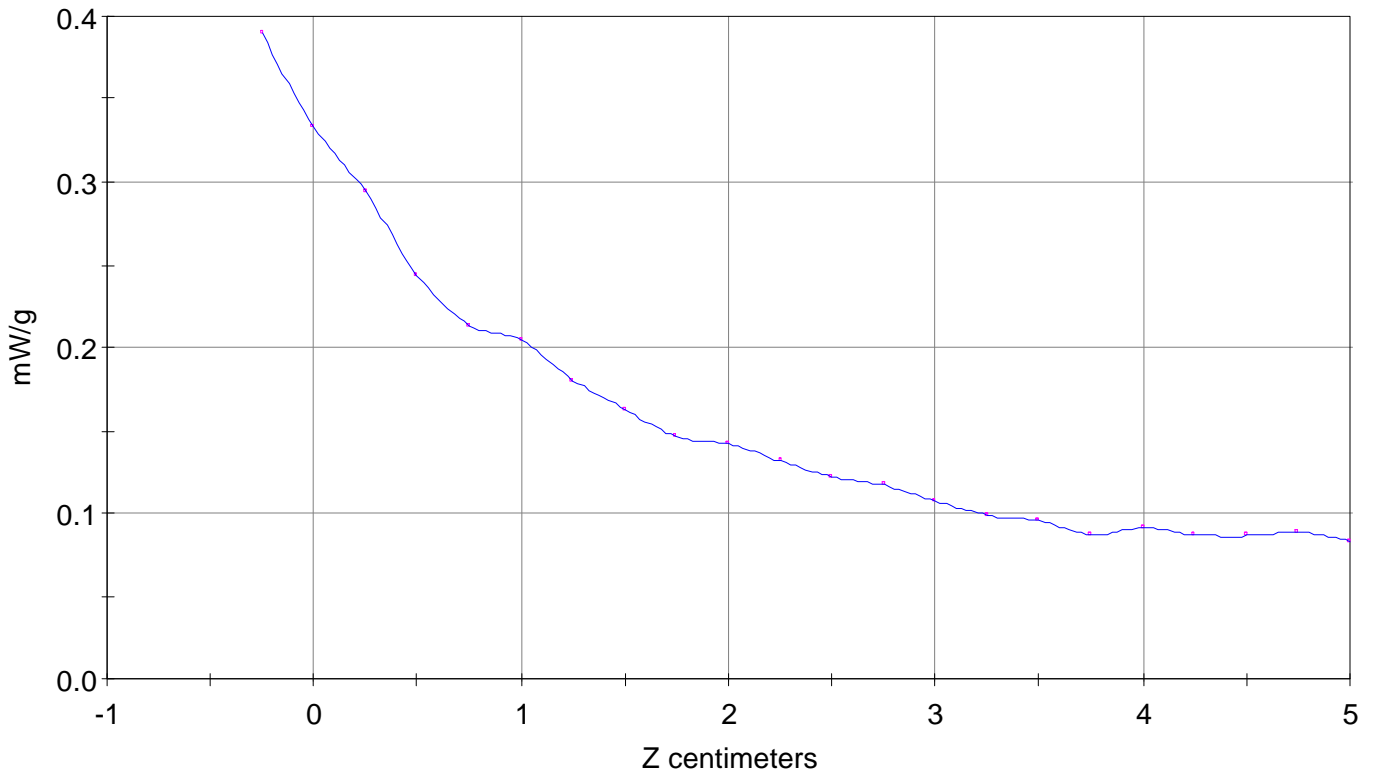
SAR Scan

File : 01072431_ZOOM

Start : 24-Jul-101 05:10:49 pm End : 24-Jul-101 05:23:44 pm

HYUNDAI/PX-21B/20;1851.25MHz;W;Helical/In;

Body/Abdomen;ZOOM/SAR;PCTEST/E Field/0 DegreesMuscle/54.200/1.450

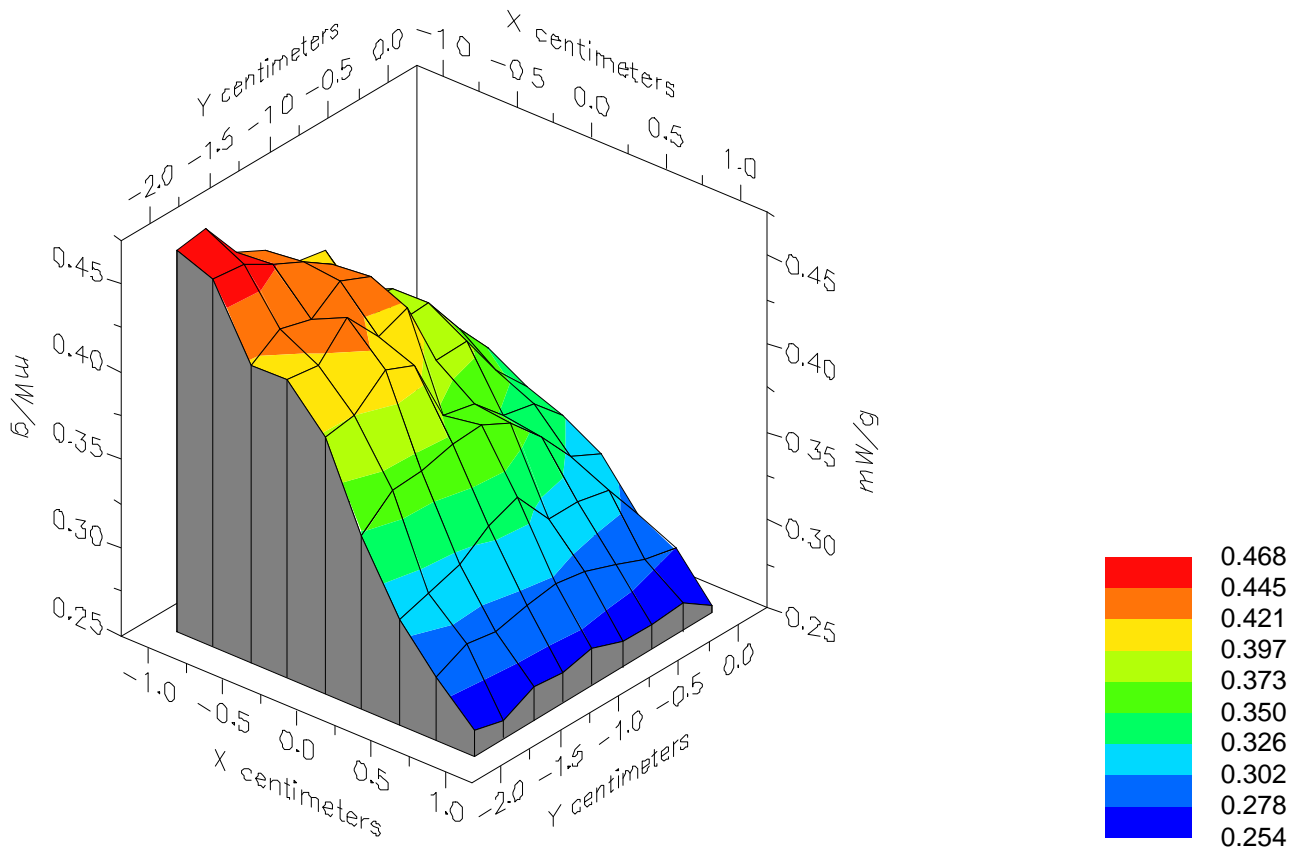


File : 01072431_ZOOM

Start : 24-Jul-101 05:10:49 pm End : 24-Jul-101 05:23:44 pm

HYUNDAI/PX-21B/20;1851.25MHz;W;Helical/In;

Body/Abdomen;ZOOM/SAR;PCTEST/E Field/0 DegreesMuscle/54.200/1.450

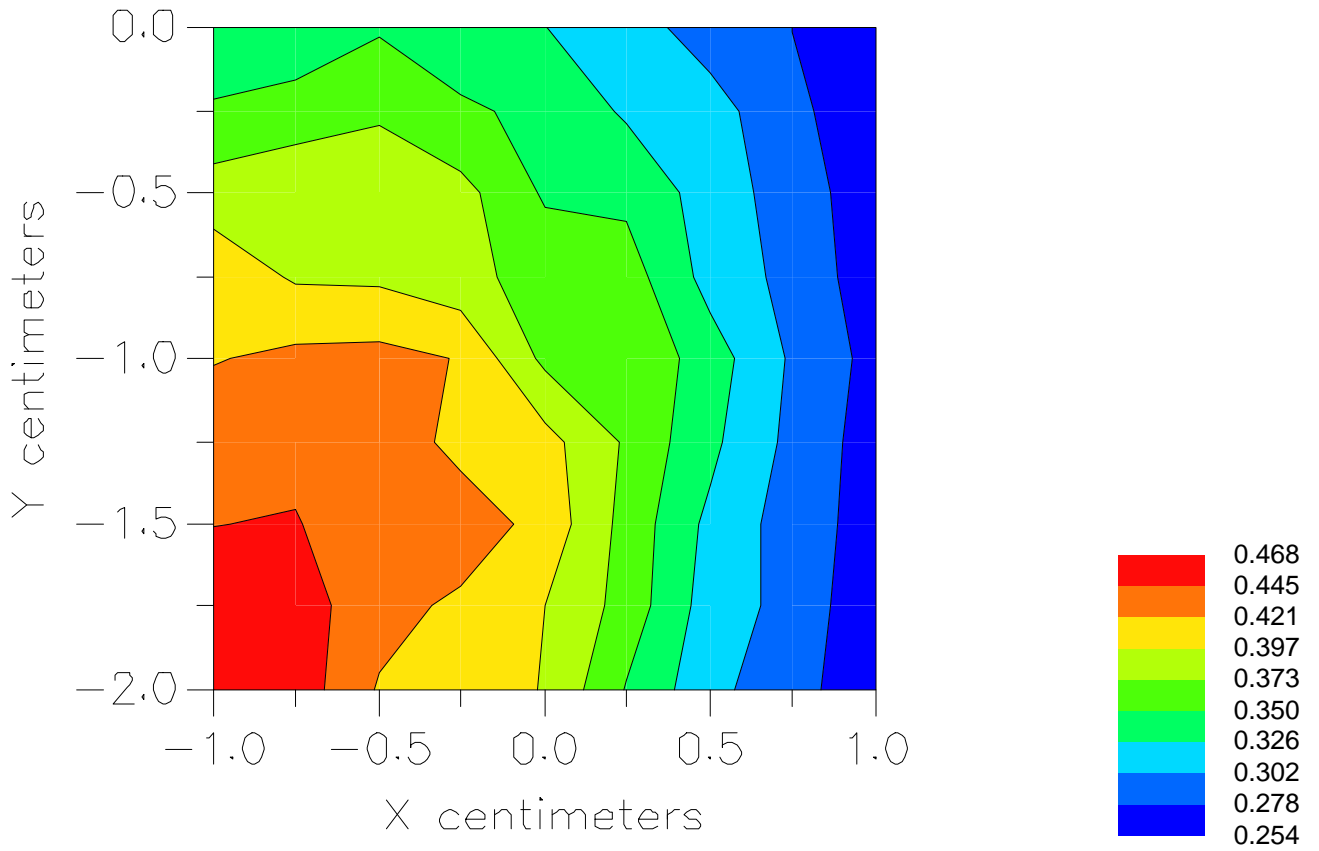


File : 01072431_ZOOM

Start : 24-Jul-101 05:10:49 pm End : 24-Jul-101 05:23:44 pm

HYUNDAI/PX-21B/20;1851.25MHz;W;Helical/In;

Body/Abdomen;ZOOM/SAR;PCTEST/E Field/0 DegreesMuscle/54.200/1.450



File : c:/idx3/SYSTEM/SARMEAS3/data/Normal/01072428_ZOOM.VLT
Start : 24-Jul-101 04:26:21 pm End : 24-Jul-101 04:34:06 pm

Radio Type : HYUNDAI
Model Number : PX-21B
Serial Number : 20
Frequency : 1851.25 MHz
Peak Trans. Pwr : 0.280 W
Start Trans. Pwr : 0.280 W
Antenna Type : Helical
Antenna Posn. : Out
Phantom Type : Body
Phantom Posn. : Abdomen
Scan Type : ZOOM/SAR
Probe Name : PCTEST
Field Type : E Field
Orientation : 0 Degrees

Mixture Type = Muscle
Mixture Dielectric Constant = 54.200
Mixture Conductivity = 1.450

Comment :
HYUNDAI PCS-MODE PHONE
CH 0025 24.5 dBm Conducted
HYUNDAI PCS-MODE PHONE - BODY SAR

Robot : PCTEST

Probe Offset = 0.25 cm
Sensor Factor = 0.0108
Conversion Factor = 1.378

PCTEST Amplifier Channel Settings : 0.245 0.231 0.224

Max Location : X = -6.000, Y = -2.500, Z = 0.000 (cm) Value = 5.885

Measured Values (volts) =
5.540E-003 4.435E-003 3.485E-003 2.887E-003 2.584E-003 2.250E-003
1.748E-003 1.500E-003 1.420E-003 1.292E-003 1.093E-003 9.406E-004
8.945E-004 9.109E-004 8.485E-004 6.948E-004 6.781E-004 7.808E-004
8.650E-004 8.453E-004 8.081E-004

Calc. Voltage @ Surface (Vs) = 0.0070

Voltage @ 1.00 cm (Vt) = 0.0029

Ave. Voltage (Vs+Vt)/2 = 0.0049

Ave. SAR over 1 g (mW/g) = 0.6298

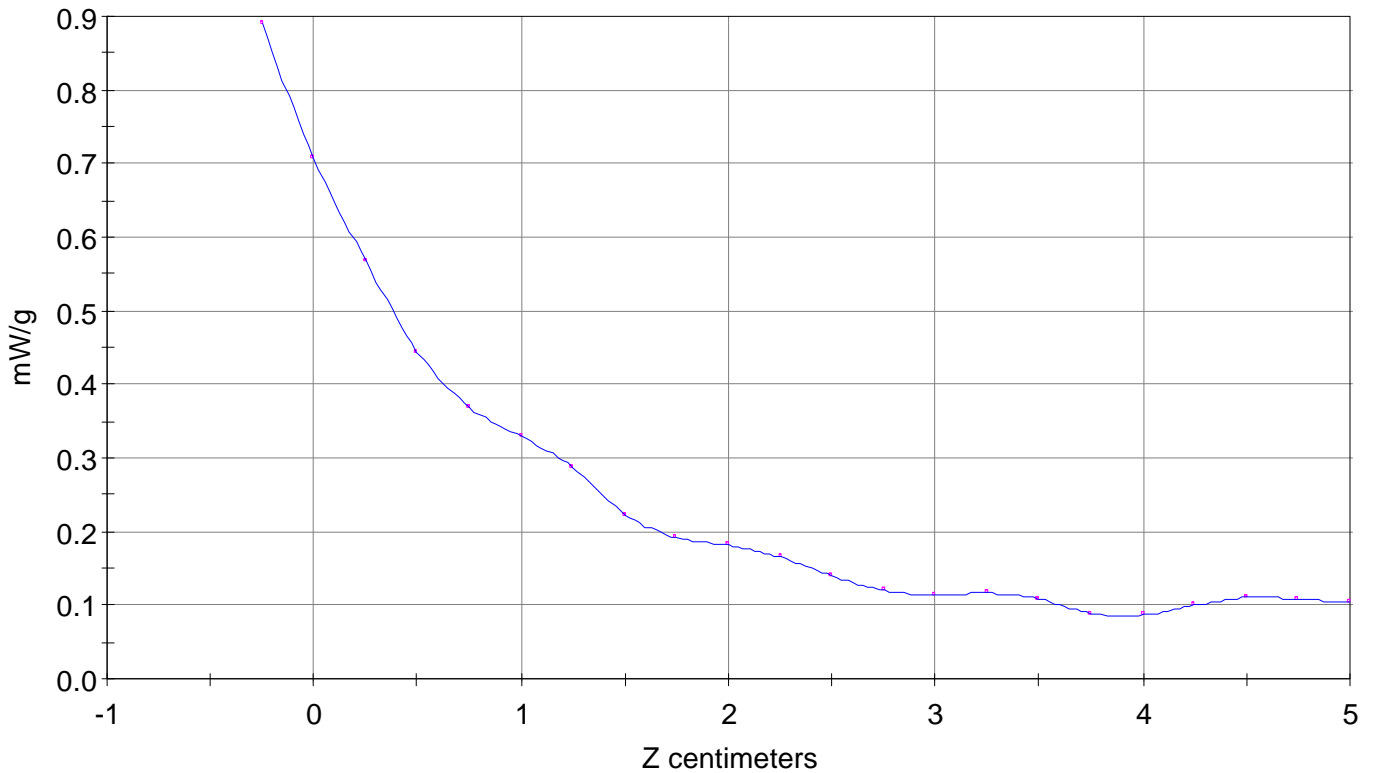
SAR Scan

File : 01072428_ZOOM

Start : 24-Jul-101 04:26:21 pm End : 24-Jul-101 04:34:06 pm

HYUNDAI/PX-21B/20;1851.25MHz;W;Helical/Out;

Body/Abdomen;ZOOM/SAR;PCTEST/E Field/0 DegreesMuscle/54.200/1.450

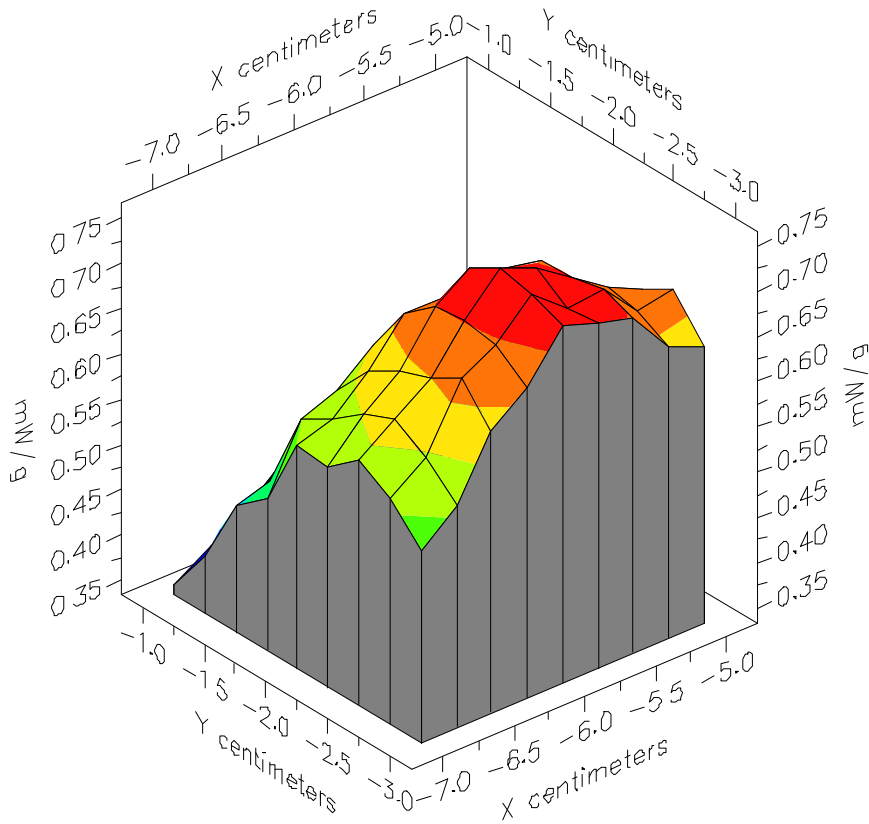


File : 01072428_ZOOM

Start : 24-Jul-101 04:26:21 pm End : 24-Jul-101 04:34:06 pm

HYUNDAI/PX-21B/20;1851.25MHz;W;Helical/Out;

Body/Abdomen;ZOOM/SAR;PCTEST/E Field/0 DegreesMuscle/54.200/1.450

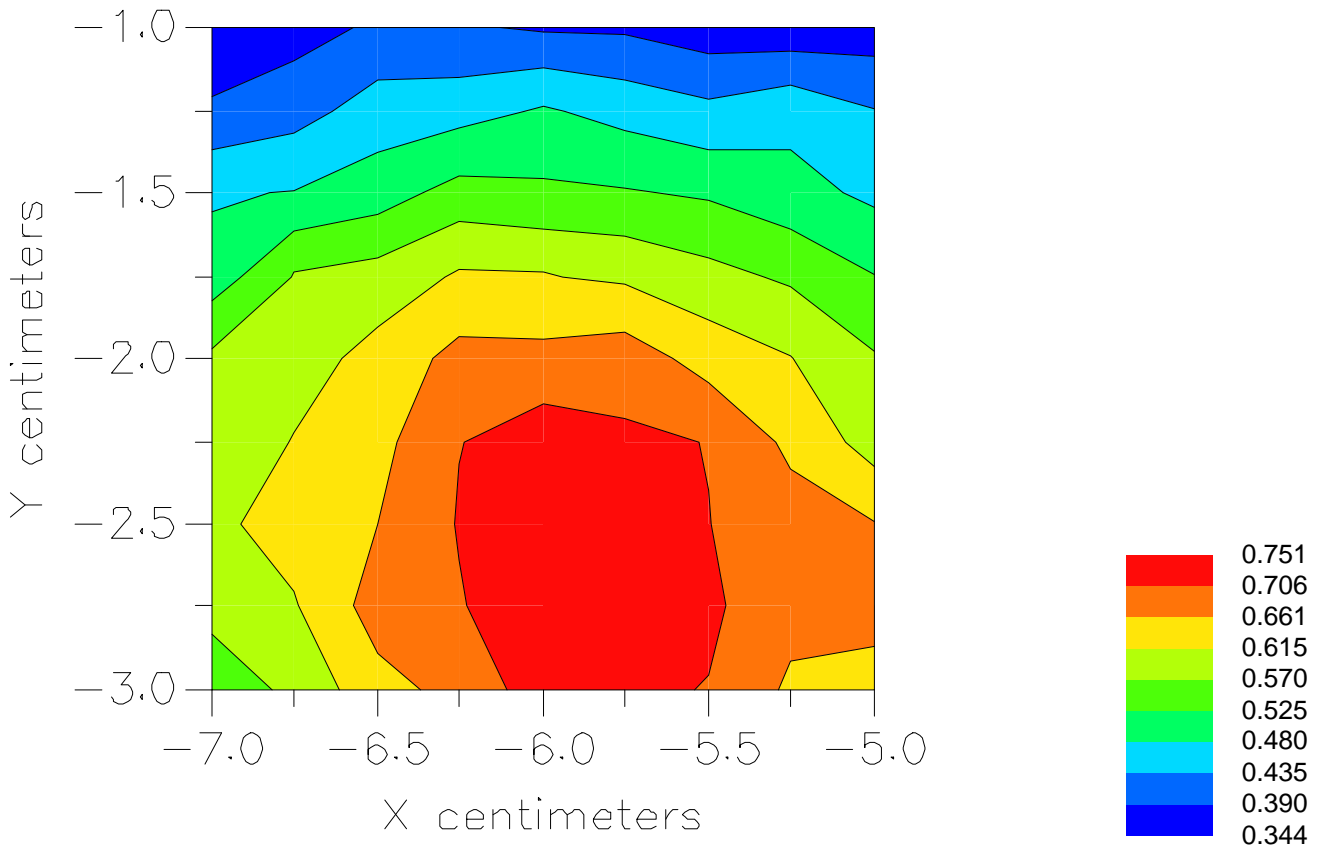


File : 01072428_ZOOM

Start : 24-Jul-101 04:26:21 pm End : 24-Jul-101 04:34:06 pm

HYUNDAI/PX-21B/20;1851.25MHz;W;Helical/Out;

Body/Abdomen;ZOOM/SAR;PCTEST/E Field/0 DegreesMuscle/54.200/1.450



File : c:/idx3/SYSTEM/SARMEAS3/data/Normal/01072432_ZOOM.VLT
Start : 24-Jul-101 05:27:11 pm End : 24-Jul-101 05:35:26 pm

Radio Type : HYUNDAI
Model Number : PX-21B
Serial Number : 20
Frequency : 1880.00 MHz
Peak Trans. Pwr : 0.280 W
Start Trans. Pwr : 0.280 W
Antenna Type : Helical
Antenna Posn. : In
Phantom Type : Body
Phantom Posn. : Abdomen
Scan Type : ZOOM/SAR
Probe Name : PCTEST
Field Type : E Field
Orientation : 0 Degrees

Mixture Type = Muscle
Mixture Dielectric Constant = 54.200
Mixture Conductivity = 1.450

Comment :
HYUNDAI PCS-MODE PHONE
CH 0600 24.5 dBm Conducted
HYUNDAI PCS-MODE PHONE - BODY SAR

Robot : PCTEST

Probe Offset = 0.25 cm
Sensor Factor = 0.0108
Conversion Factor = 1.378

PCTEST Amplifier Channel Settings : 0.245 0.231 0.224

Max Location : X = -1.000, Y = -2.000, Z = 0.000 (cm) Value = 3.243

Measured Values (volts) =
2.897E-003 2.332E-003 1.831E-003 1.607E-003 1.417E-003 1.231E-003
1.117E-003 1.004E-003 9.213E-004 8.322E-004 7.658E-004 7.289E-004
7.308E-004 6.500E-004 6.334E-004 6.979E-004 6.561E-004 6.167E-004
5.966E-004 5.913E-004 6.667E-004

Calc. Voltage @ Surface (Vs) = 0.0036

Voltage @ 1.00 cm (Vt) = 0.0016

Ave. Voltage (Vs+Vt)/2 = 0.0026

Ave. SAR over 1 g (mW/g) = 0.3350

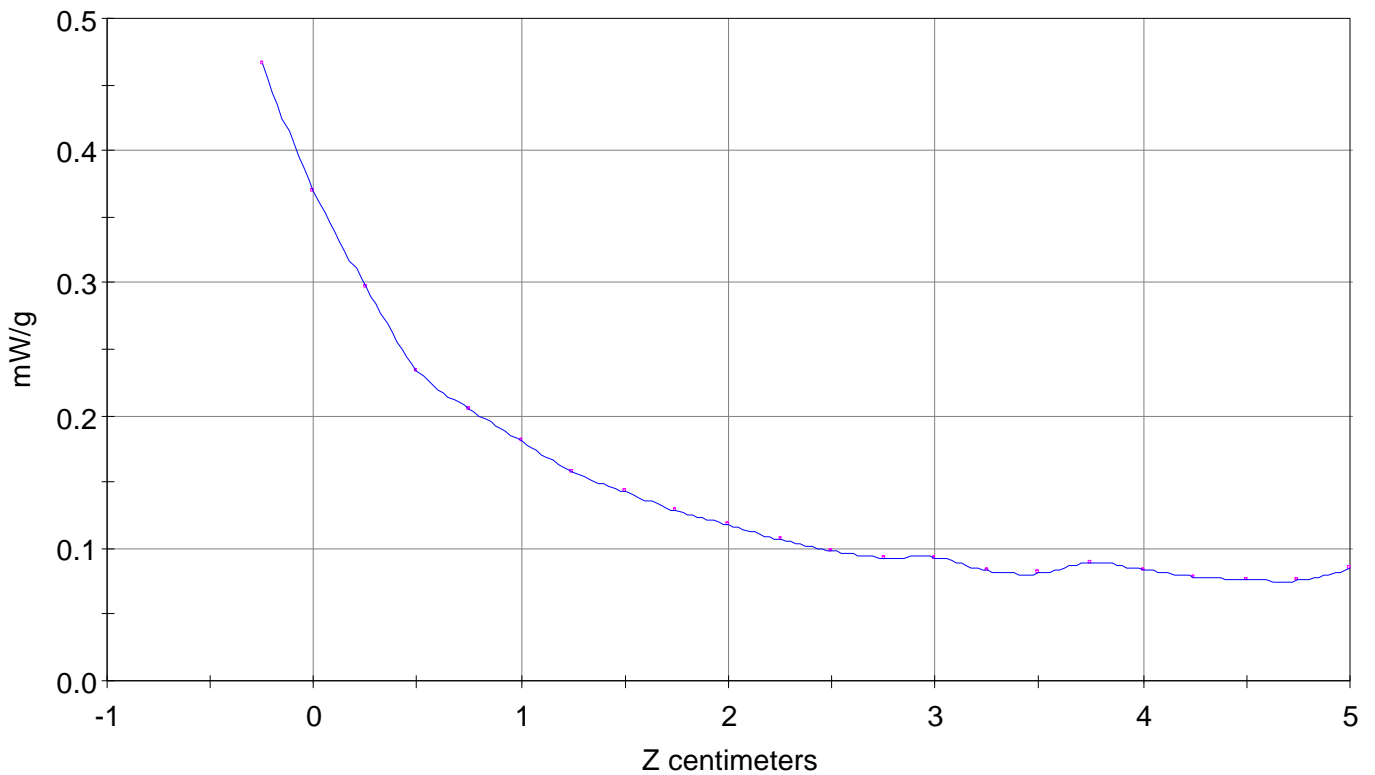
SAR Scan

File : 01072432_ZOOM

Start : 24-Jul-101 05:27:11 pm End : 24-Jul-101 05:35:26 pm

HYUNDAI/PX-21B/20;1880.00MHz;W;Helical/In;

Body/Abdomen;ZOOM/SAR;PCTEST/E Field/0 DegreesMuscle/54.200/1.450

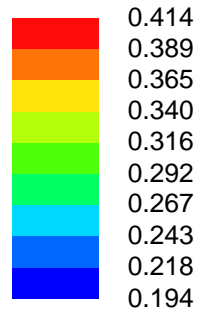
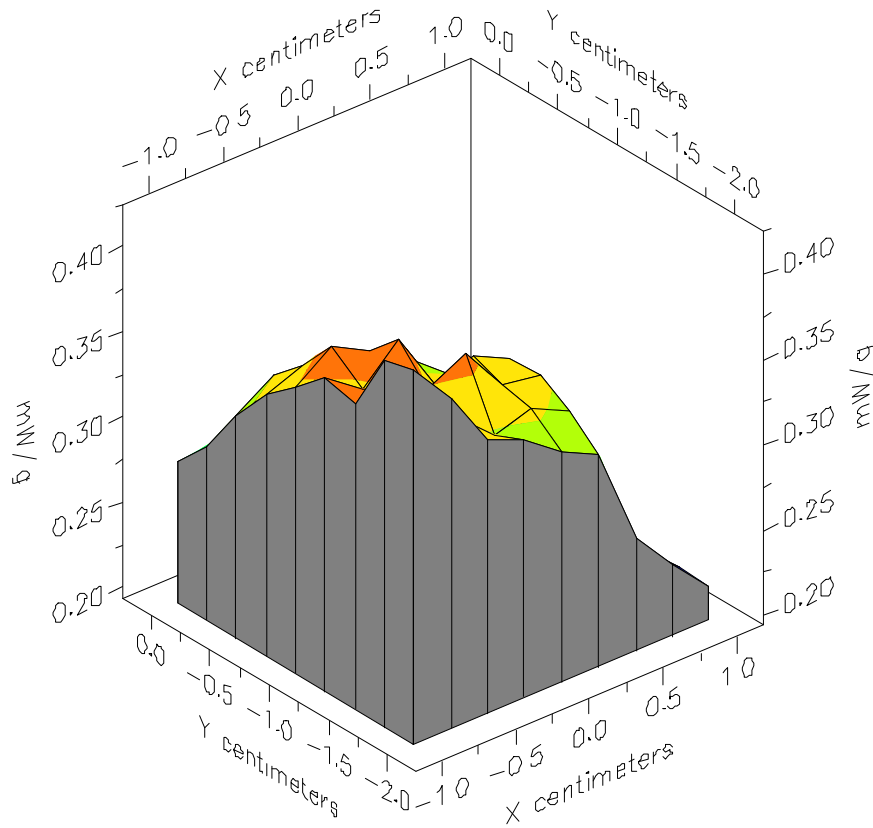


File : 01072432_ZOOM

Start : 24-Jul-101 05:27:11 pm End : 24-Jul-101 05:35:26 pm

HYUNDAI/PX-21B/20;1880.00MHz;W;Helical/In;

Body/Abdomen;ZOOM/SAR;PCTEST/E Field/0 DegreesMuscle/54.200/1.450

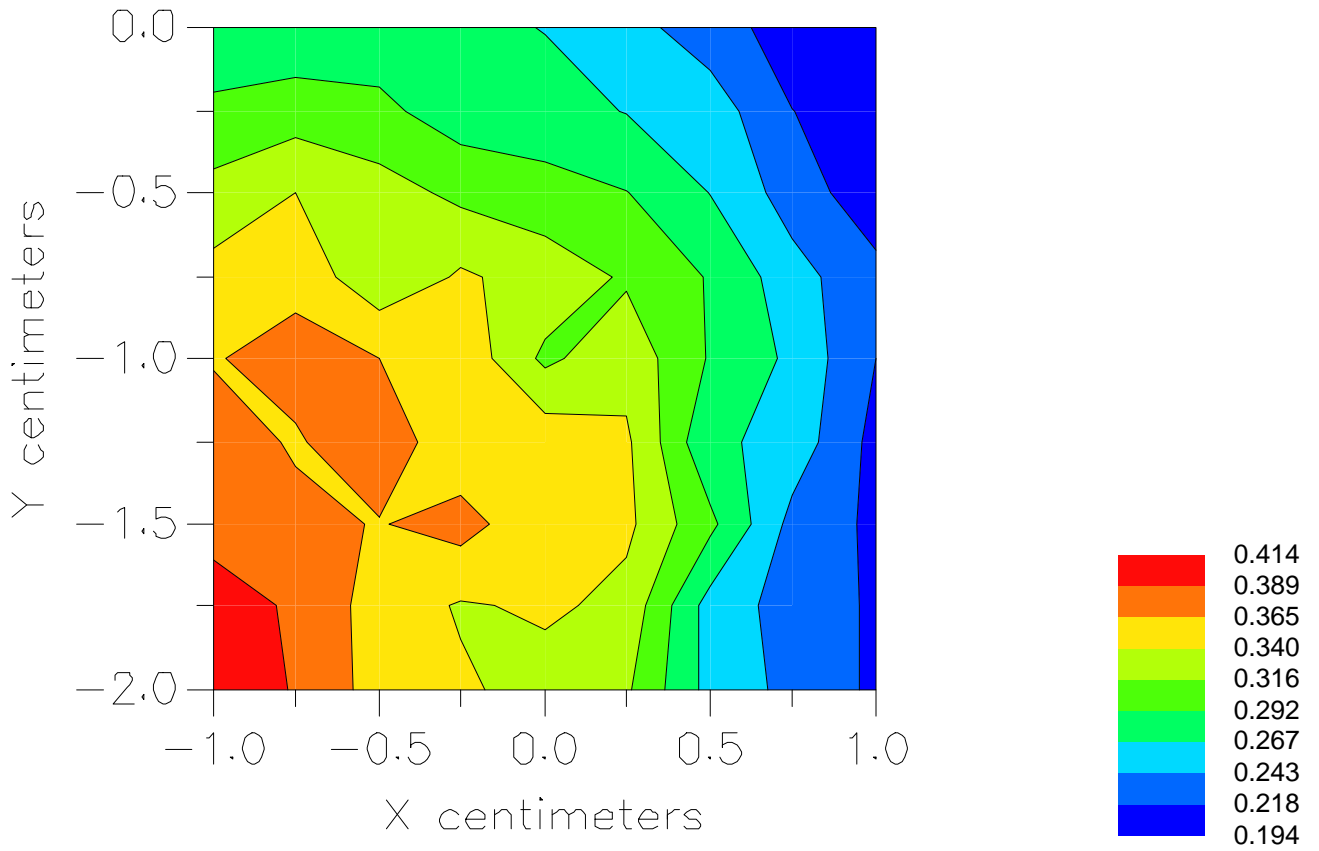


File : 01072432_ZOOM

Start : 24-Jul-101 05:27:11 pm End : 24-Jul-101 05:35:26 pm

HYUNDAI/PX-21B/20;1880.00MHz;W;Helical/In;

Body/Abdomen;ZOOM/SAR;PCTEST/E Field/0 DegreesMuscle/54.200/1.450



File : c:/idx3/SYSTEM/SARMEAS3/data/Normal/01072429_ZOOM.VLT
Start : 24-Jul-101 04:37:40 pm End : 24-Jul-101 04:45:23 pm

Radio Type : HYUNDAI
Model Number : PX-21B
Serial Number : 20
Frequency : 1880.00 MHz
Peak Trans. Pwr : 0.280 W
Start Trans. Pwr : 0.280 W
Antenna Type : Helical
Antenna Posn. : Out
Phantom Type : Body
Phantom Posn. : Abdomen
Scan Type : ZOOM/SAR
Probe Name : PCTEST
Field Type : E Field
Orientation : 0 Degrees

Mixture Type = Muscle
Mixture Dielectric Constant = 54.200
Mixture Conductivity = 1.450

Comment :
HYUNDAI PCS-MODE PHONE
CH 0600 24.5 dBm Conducted
HYUNDAI PCS-MODE PHONE - BODY SAR

Robot : PCTEST

Probe Offset = 0.25 cm
Sensor Factor = 0.0108
Conversion Factor = 1.378

PCTEST Amplifier Channel Settings : 0.245 0.231 0.224

Max Location : X = -6.000, Y = -2.500, Z = 0.000 (cm) Value = 3.649

Measured Values (volts) =
3.479E-003 2.987E-003 2.288E-003 1.925E-003 1.687E-003 1.545E-003
1.254E-003 1.090E-003 1.021E-003 9.476E-004 8.726E-004 7.893E-004
7.344E-004 7.386E-004 7.001E-004 6.304E-004 6.364E-004 6.598E-004
7.387E-004 7.369E-004 6.959E-004

Calc. Voltage @ Surface (Vs) = 0.0043

Voltage @ 1.00 cm (Vt) = 0.0019

Ave. Voltage (Vs+Vt)/2 = 0.0031

Ave. SAR over 1 g (mW/g) = 0.3969

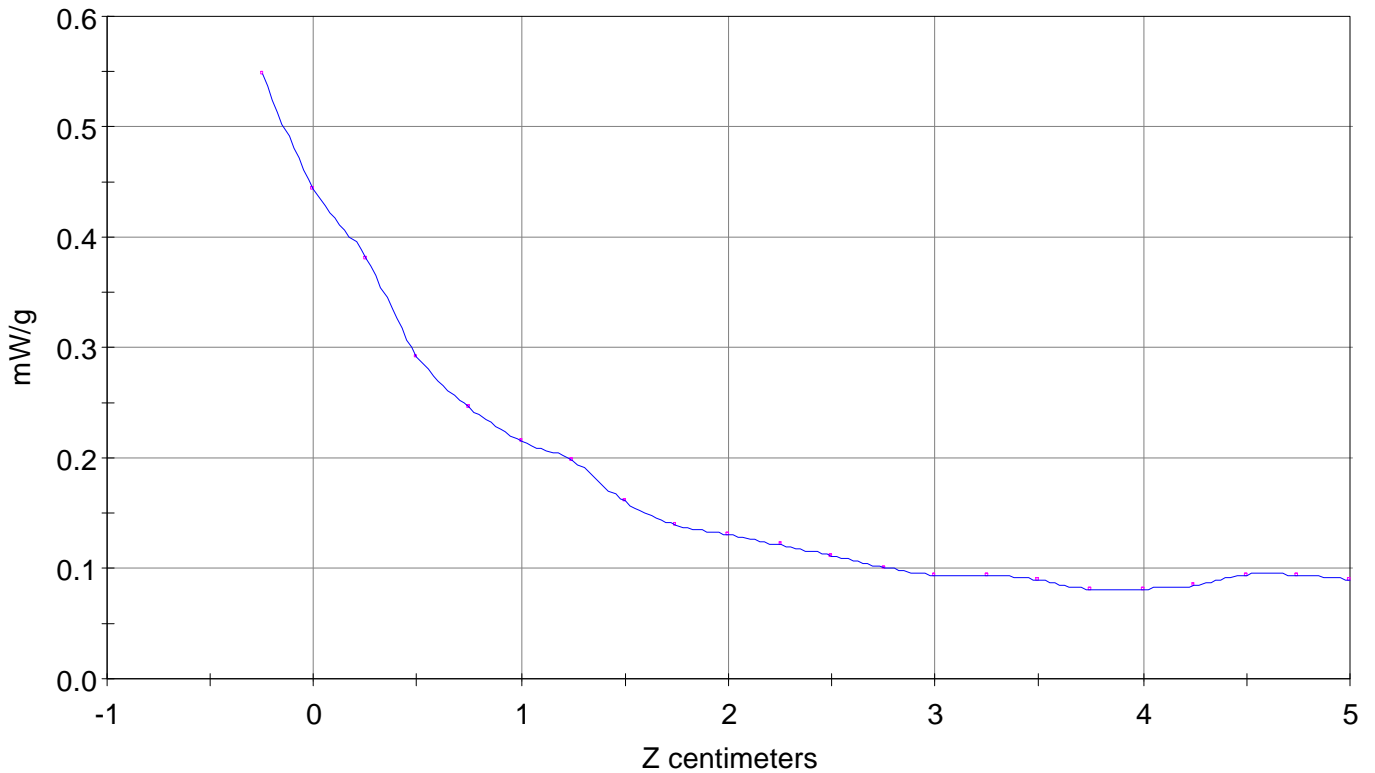
SAR Scan

File : 01072429_ZOOM

Start : 24-Jul-101 04:37:40 pm End : 24-Jul-101 04:45:23 pm

HYUNDAI/PX-21B/20;1880.00MHz;W;Helical/Out;

Body/Abdomen;ZOOM/SAR;PCTEST/E Field/0 DegreesMuscle/54.200/1.450

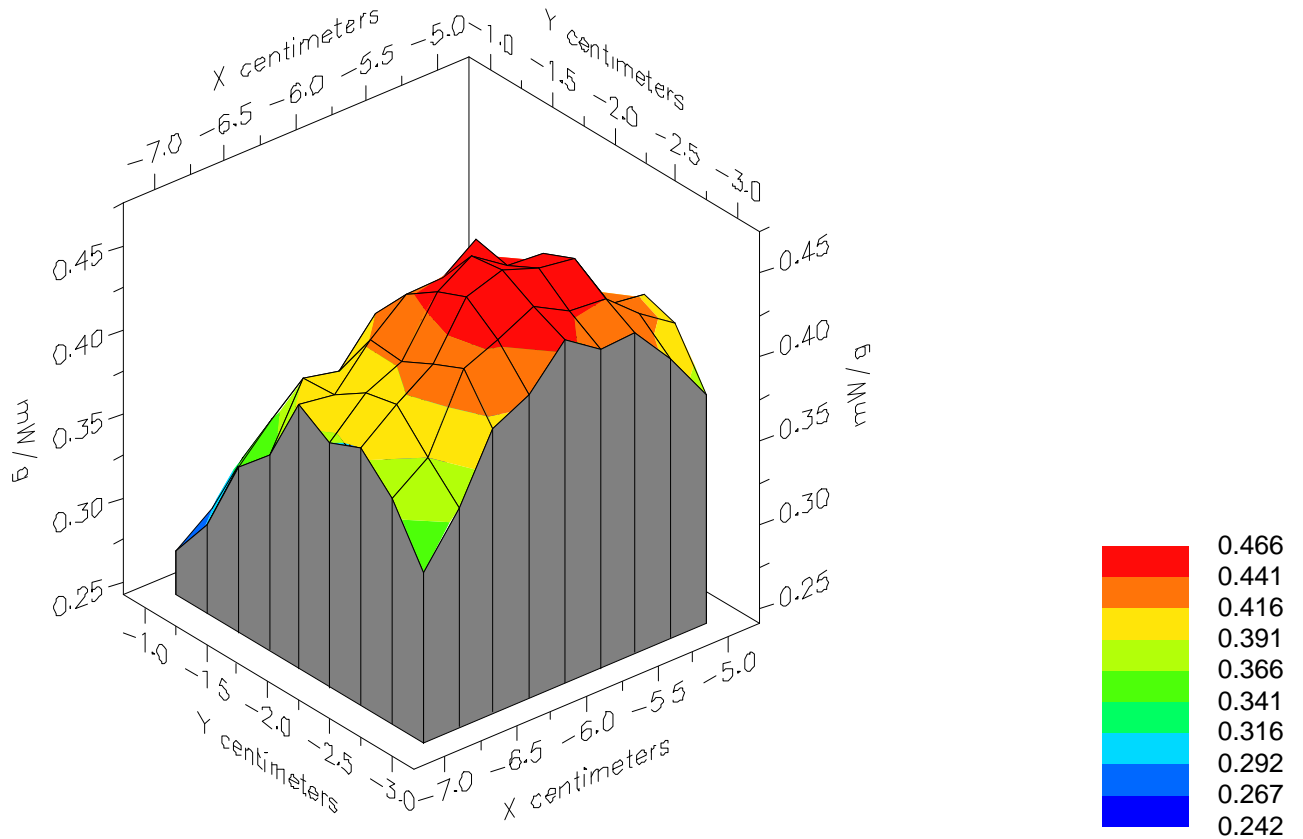


File : 01072429_ZOOM

Start : 24-Jul-101 04:37:40 pm End : 24-Jul-101 04:45:23 pm

HYUNDAI/PX-21B/20;1880.00MHz;W;Helical/Out;

Body/Abdomen;ZOOM/SAR;PCTEST/E Field/0 DegreesMuscle/54.200/1.450

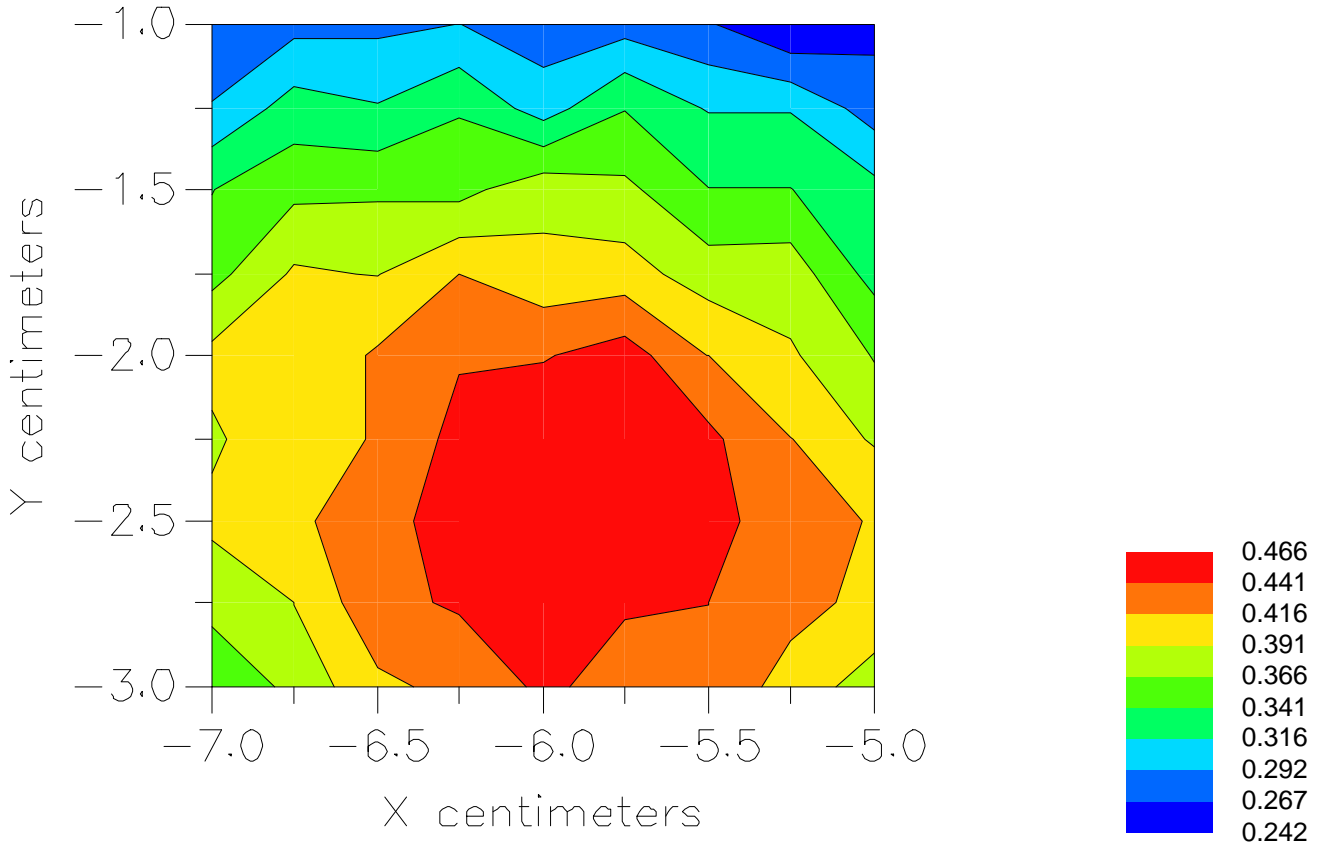


File : 01072429_ZOOM

Start : 24-Jul-101 04:37:40 pm End : 24-Jul-101 04:45:23 pm

HYUNDAI/PX-21B/20;1880.00MHz;W;Helical/Out;

Body/Abdomen;ZOOM/SAR;PCTEST/E Field/0 DegreesMuscle/54.200/1.450



File : c:/idx3/SYSTEM/SARMEAS3/data/Normal/01072417_ZOOM.VLT
Start : 24-Jul-101 02:32:51 pm End : 24-Jul-101 02:41:07 pm

Radio Type : HYUNDAI
Model Number : PX-21B
Serial Number : 20
Frequency : 1908.75 MHz
Peak Trans. Pwr : 0.280 W
Start Trans. Pwr : 0.280 W
Antenna Type : Helical
Antenna Posn. : In
Phantom Type : Body
Phantom Posn. : Abdomen
Scan Type : ZOOM/SAR
Probe Name : PCTEST
Field Type : E Field
Orientation : 0 Degrees

Mixture Type = Muscle
Mixture Dielectric Constant = 54.200
Mixture Conductivity = 1.450

Comment :
HYUNDAI PCS-MODE PHONE
CH 1175 24.5 dBm Conducted
HYUNDAI PCS-MODE PHONE - BODY SAR

Robot : PCTEST

Probe Offset = 0.25 cm
Sensor Factor = 0.0108
Conversion Factor = 1.378

PCTEST Amplifier Channel Settings : 0.245 0.231 0.224

Max Location : X = 0.250, Y = -2.000, Z = 0.000 (cm) Value = 1.943

Measured Values (volts) =
1.647E-003 1.267E-003 1.008E-003 8.261E-004 9.942E-004 6.016E-004
4.878E-004 3.932E-004 3.219E-004 3.020E-004 2.704E-004 2.295E-004
2.322E-004 1.735E-004 1.400E-004 1.310E-004 2.900E-004 1.313E-004
1.370E-004 1.120E-004 1.140E-004

Calc. Voltage @ Surface (Vs) = 0.0021

Voltage @ 1.00 cm (Vt) = 0.0008

Ave. Voltage (Vs+Vt)/2 = 0.0015

Ave. SAR over 1 g (mW/g) = 0.1871

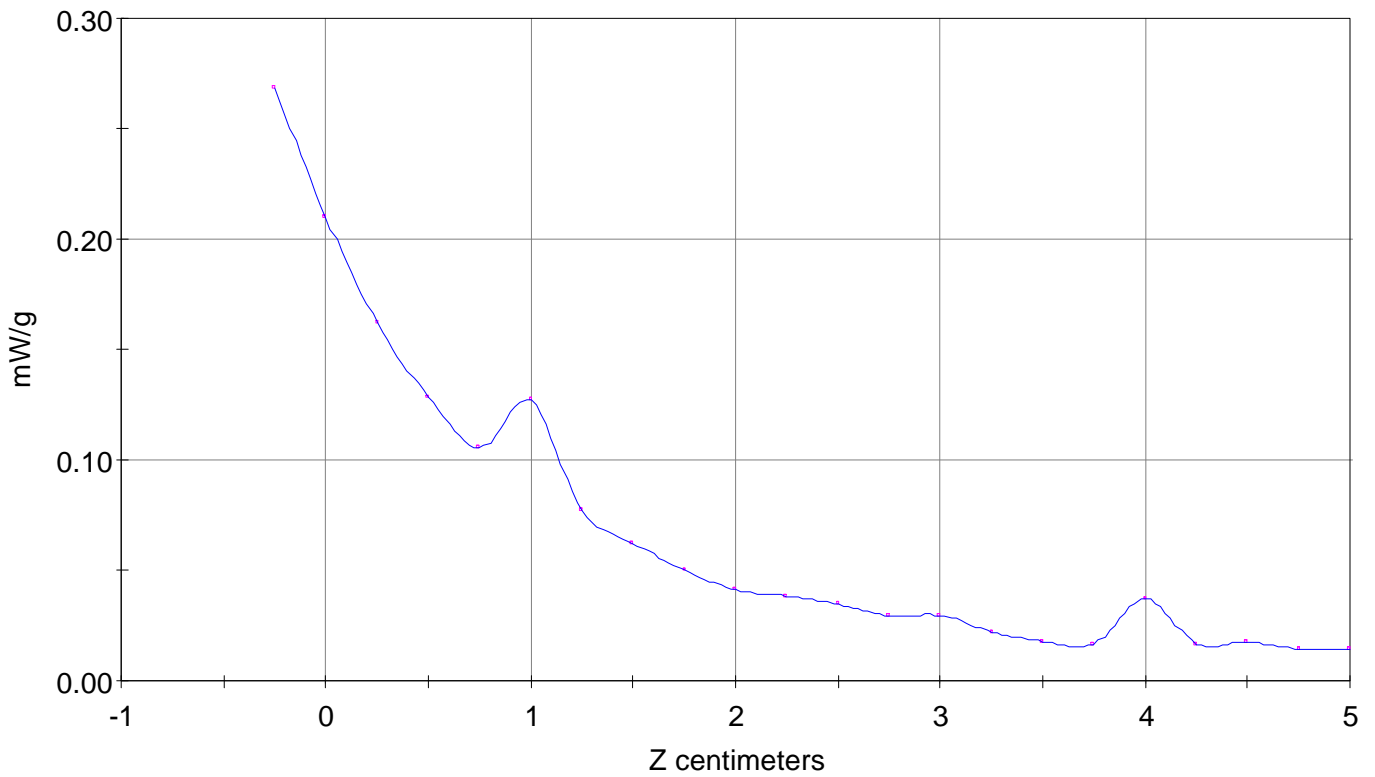
SAR Scan

File : 01072417_ZOOM

Start : 24-Jul-101 02:32:51 pm End : 24-Jul-101 02:41:07 pm

HYUNDAI/PX-21B/20;1908.75MHz;W;Helical/In;

Body/Abdomen;ZOOM/SAR;PCTEST/E Field/0 DegreesMuscle/54.200/1.450

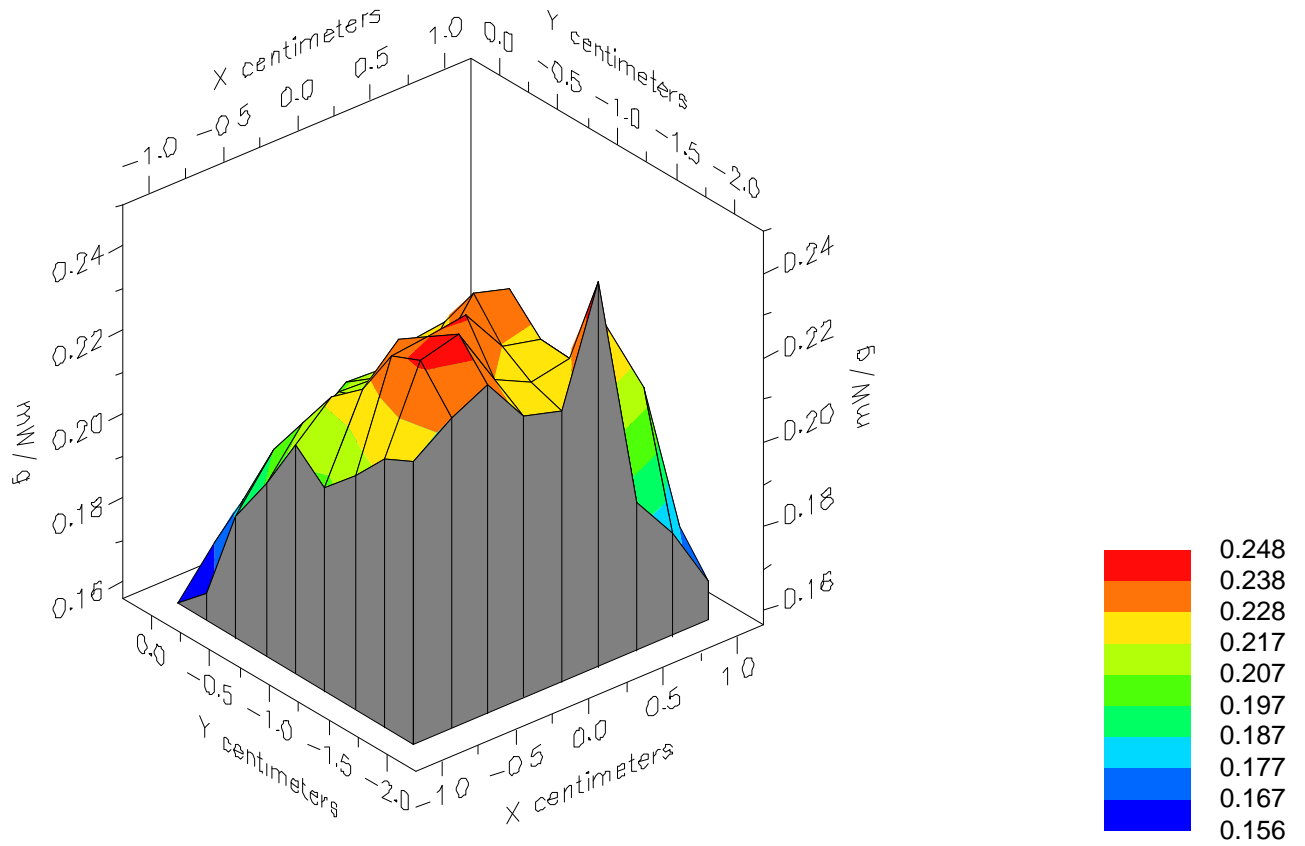


File : 01072417_ZOOM

Start : 24-Jul-101 02:32:51 pm End : 24-Jul-101 02:41:07 pm

HYUNDAI/PX-21B/20;1908.75MHz;W;Helical/In;

Body/Abdomen;ZOOM/SAR;PCTEST/E Field/0 DegreesMuscle/54.200/1.450

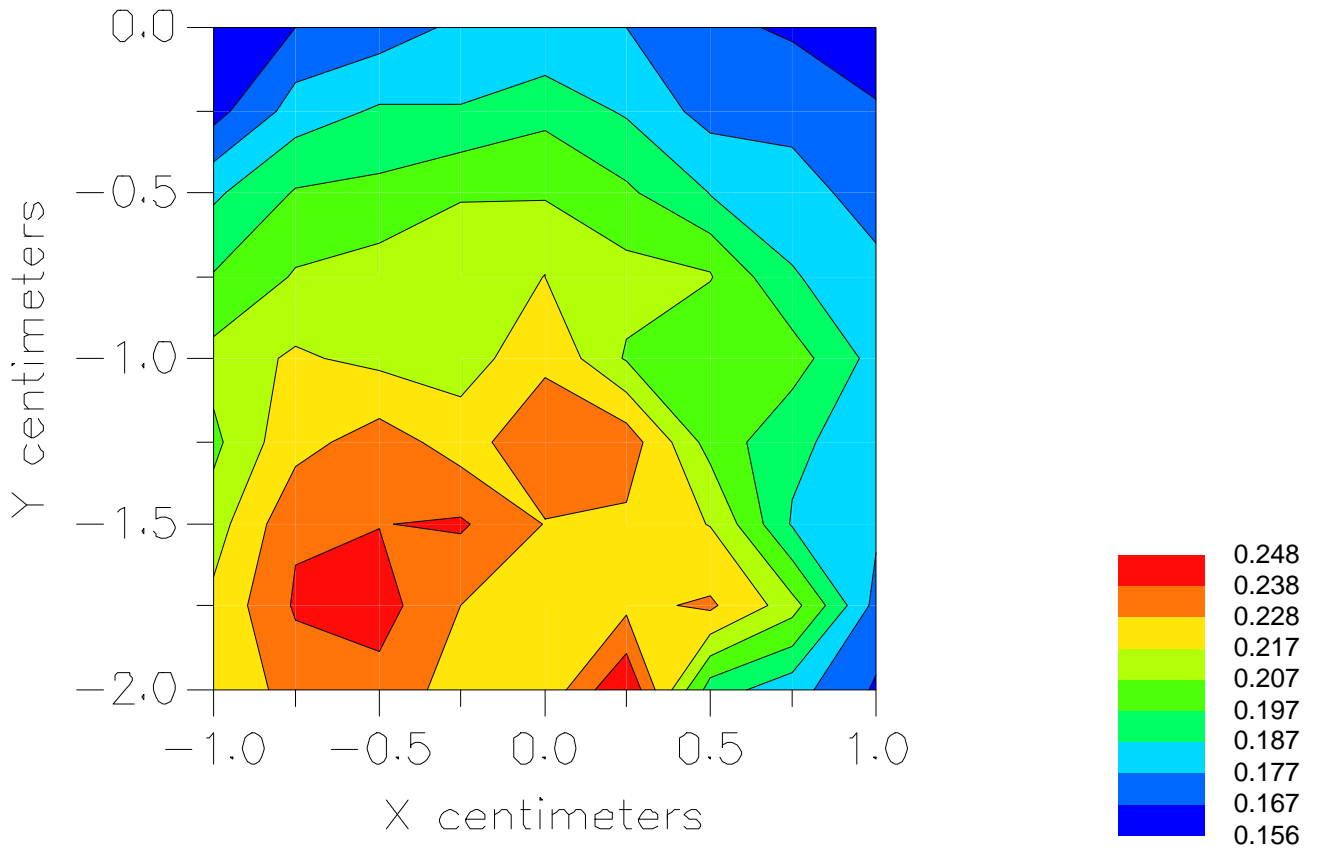


File : 01072417_ZOOM

Start : 24-Jul-101 02:32:51 pm End : 24-Jul-101 02:41:07 pm

HYUNDAI/PX-21B/20;1908.75MHz;W;Helical/In;

Body/Abdomen;ZOOM/SAR;PCTEST/E Field/0 DegreesMuscle/54.200/1.450



File : c:/idx3/SYSTEM/SARMEAS3/data/Normal/01072430_ZOOM.VLT
Start : 24-Jul-101 04:51:12 pm End : 24-Jul-101 04:58:58 pm

Radio Type : HYUNDAI
Model Number : PX-21B
Serial Number : 20
Frequency : 1908.75 MHz
Peak Trans. Pwr : 0.280 W
Start Trans. Pwr : 0.280 W
Antenna Type : Helical
Antenna Posn. : Out
Phantom Type : Body
Phantom Posn. : Abdomen
Scan Type : ZOOM/SAR
Probe Name : PCTEST
Field Type : E Field
Orientation : 0 Degrees

Mixture Type = Muscle
Mixture Dielectric Constant = 54.200
Mixture Conductivity = 1.450

Comment :
HYUNDAI PCS-MODE PHONE
CH 1175 24.5 dBm Conducted
HYUNDAI PCS-MODE PHONE - BODY SAR

Robot : PCTEST

Probe Offset = 0.25 cm
Sensor Factor = 0.0108
Conversion Factor = 1.378

PCTEST Amplifier Channel Settings : 0.245 0.231 0.224

Max Location : X = -6.000, Y = -3.000, Z = 0.000 (cm) Value = 3.217

Measured Values (volts) =
2.957E-003 2.261E-003 1.829E-003 1.604E-003 1.403E-003 1.249E-003
1.086E-003 9.847E-004 9.296E-004 8.377E-004 7.832E-004 7.582E-004
7.503E-004 6.911E-004 6.373E-004 5.628E-004 6.424E-004 6.321E-004
6.888E-004 6.418E-004 6.171E-004

Calc. Voltage @ Surface (Vs) = 0.0038

Voltage @ 1.00 cm (Vt) = 0.0016

Ave. Voltage (Vs+Vt)/2 = 0.0027

Ave. SAR over 1 g (mW/g) = 0.3422

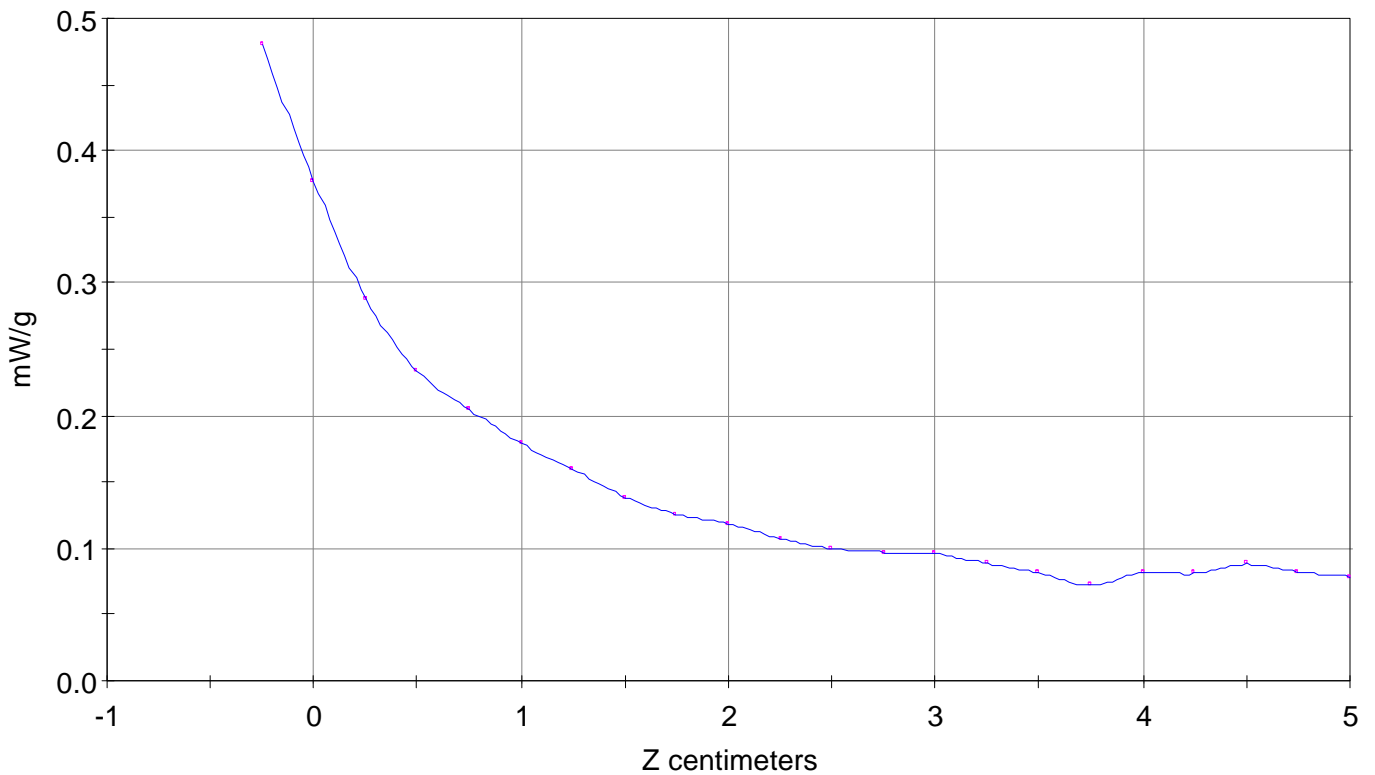
SAR Scan

File : 01072430_ZOOM

Start : 24-Jul-101 04:51:12 pm End : 24-Jul-101 04:58:58 pm

HYUNDAI/PX-21B/20;1908.75MHz;W;Helical/Out;

Body/Abdomen;ZOOM/SAR;PCTEST/E Field/0 DegreesMuscle/54.200/1.450

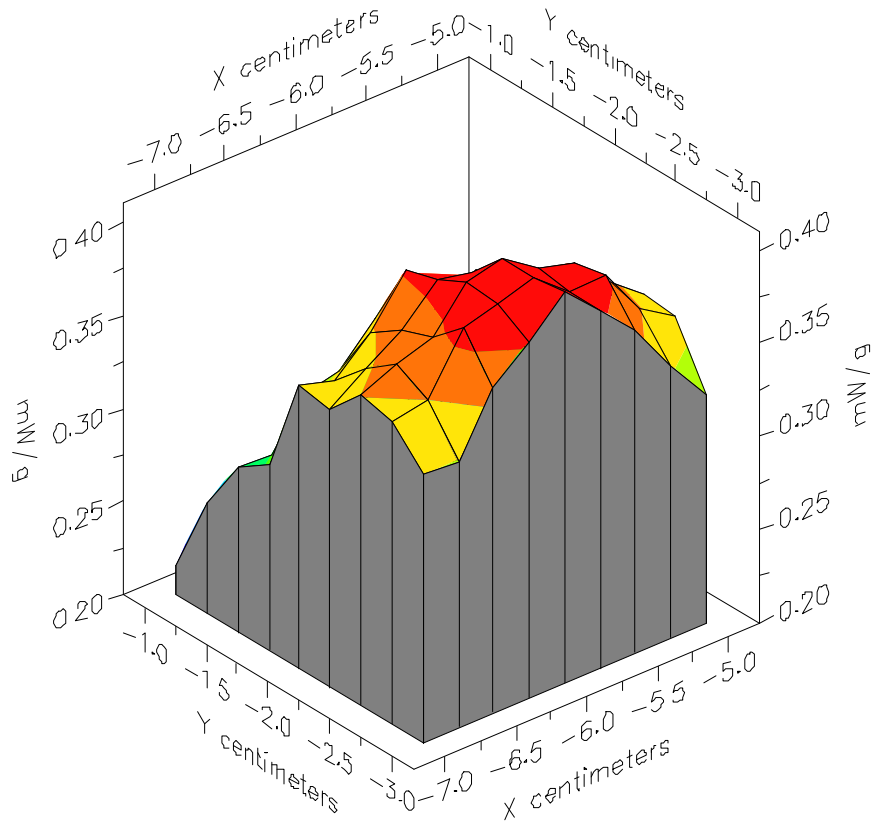


File : 01072430_ZOOM

Start : 24-Jul-101 04:51:12 pm End : 24-Jul-101 04:58:58 pm

HYUNDAI/PX-21B/20;1908.75MHz;W;Helical/Out;

Body/Abdomen;ZOOM/SAR;PCTEST/E Field/0 DegreesMuscle/54.200/1.450



File : 01072430_ZOOM

Start : 24-Jul-101 04:51:12 pm End : 24-Jul-101 04:58:58 pm

HYUNDAI/PX-21B/20;1908.75MHz;W;Helical/Out;

Body/Abdomen;ZOOM/SAR;PCTEST/E Field/0 DegreesMuscle/54.200/1.450

