

ATTACHMENT Q – DIPOLE VALIDATION

Validation Data (835MHz Head)

Test Laboratory: HCT

835 Dipole Validation test: Input power(1W)
Liquid Temperature : 22.2°C
Date Tested : June 22, 2006

DUT: Dipole 835 MHz; Type: D835V2; Serial: D835V2 - SN:441
Program Name: Validation 835 MHz

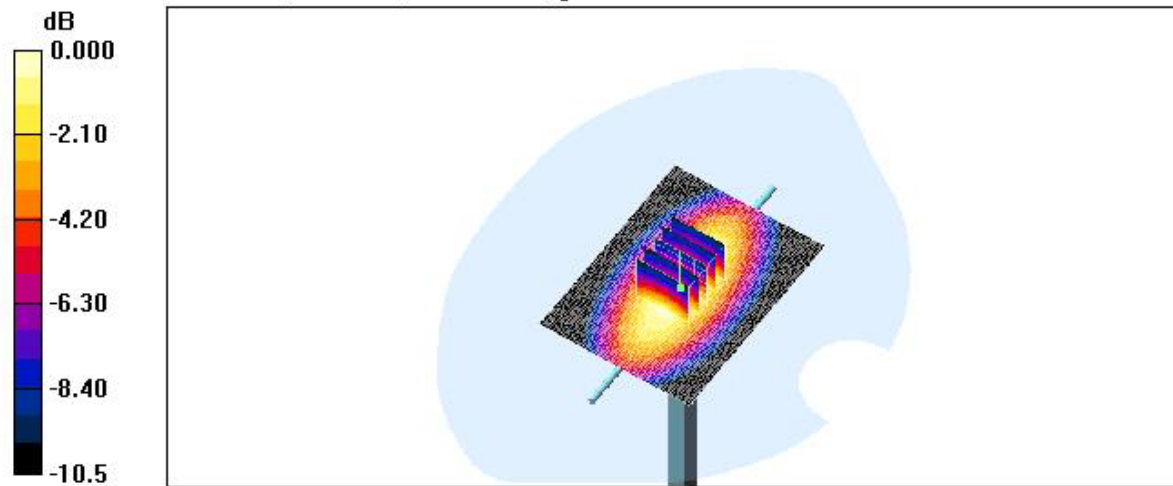
Communication System: CW; Frequency: 835 MHz; Duty Cycle: 1:1
Medium parameters used: $f = 835 \text{ MHz}$; $\sigma = 0.875 \text{ mho/m}$; $\epsilon_r = 40.8$; $\rho = 1000 \text{ kg/m}^3$
Phantom section: Flat Section ; Measurement SW: DASY4, V4.6 Build 23

DASY4 Configuration:

- Probe: ET3DV6 - SN1609; ConvF(6.85, 6.85, 6.85); Calibrated: 2006-03-23
- Sensor-Surface: 4mm (Mechanical Surface Detection)
- Electronics: DAE4 Sn447; Calibrated: 2005-11-30
- Phantom: SAM 835/900 MHz; Type: SAM

Validatoin 835 MHz/Area Scan (61x81x1): Measurement grid: $dx=15\text{mm}$, $dy=15\text{mm}$
Maximum value of SAR (interpolated) = 10.3 mW/g

Validatoin 835 MHz/Zoom Scan (5x5x7)/Cube 0: Measurement grid: $dx=8\text{mm}$, $dy=8\text{mm}$, $dz=5\text{mm}$
Reference Value = 112.1 V/m; Power Drift = -0.010 dB
Peak SAR (extrapolated) = 14.0 W/kg
SAR(1 g) = 9.53 mW/g; SAR(10 g) = 6.25 mW/g
Maximum value of SAR (measured) = 10.3 mW/g



0 dB = 10.3mW/g

Dielectric Parameter (835MHz Head)

Title : PC-7300L

SubTitle : CDMA835(Head)

June 22, 2006 07:50 AM

Frequency	e'	e''
800.000000 MHz	41.2139	18.8968
805.000000 MHz	41.1031	18.8801
810.000000 MHz	41.0411	18.8402
815.000000 MHz	41.0253	18.8097
820.000000 MHz	40.9474	18.8228
825.000000 MHz	40.9674	18.8411
830.000000 MHz	40.8429	18.8301
835.000000 MHz	40.8060	18.8270
840.000000 MHz	40.8138	18.8325
845.000000 MHz	40.7675	18.7905
850.000000 MHz	40.7517	18.7818
855.000000 MHz	40.6454	18.7779
860.000000 MHz	40.6284	18.7596
865.000000 MHz	40.6172	18.7600
870.000000 MHz	40.5303	18.7414
875.000000 MHz	40.4924	18.7495
880.000000 MHz	40.4109	18.7251
885.000000 MHz	40.3424	18.7073
890.000000 MHz	40.3070	18.7151
895.000000 MHz	40.1900	18.6774
900.000000 MHz	40.1223	18.6359

Dielectric Parameter (835MHz Body)

Title : PC-7300L

SubTitle : CDMA835(Body)

June 22, 2006 01:10 PM

Frequency	e'	e''
800.000000 MHz	55.2656	20.7383
805.000000 MHz	55.2143	20.7296
810.000000 MHz	55.0347	20.6436
815.000000 MHz	55.0466	20.6465
820.000000 MHz	54.9913	20.6626
825.000000 MHz	54.9545	20.6495
830.000000 MHz	54.8785	20.6621
835.000000 MHz	54.7831	20.6930
840.000000 MHz	54.8099	20.7223
845.000000 MHz	54.7423	20.7317
850.000000 MHz	54.7655	20.7177
855.000000 MHz	54.7298	20.7476
860.000000 MHz	54.7908	20.7725
865.000000 MHz	54.7314	20.7353
870.000000 MHz	54.7082	20.7058
875.000000 MHz	54.6903	20.6745
880.000000 MHz	54.6675	20.6559
885.000000 MHz	54.6176	20.6744
890.000000 MHz	54.5455	20.6067
895.000000 MHz	54.5117	20.4878
900.000000 MHz	54.4350	20.4184