

# System Validation - D900V2 SN: 108

(Input power: 250 mW)

SAM; Flat

Probe: ET3DV6 - SN1578; ConvF(7.00,7.00,7.00); Crest factor: 1.0

Head 900 MHz:  $\sigma = 0.94$  mho/m  $\epsilon_r = 41.6$   $\rho = 1.00$  g/cm<sup>3</sup>

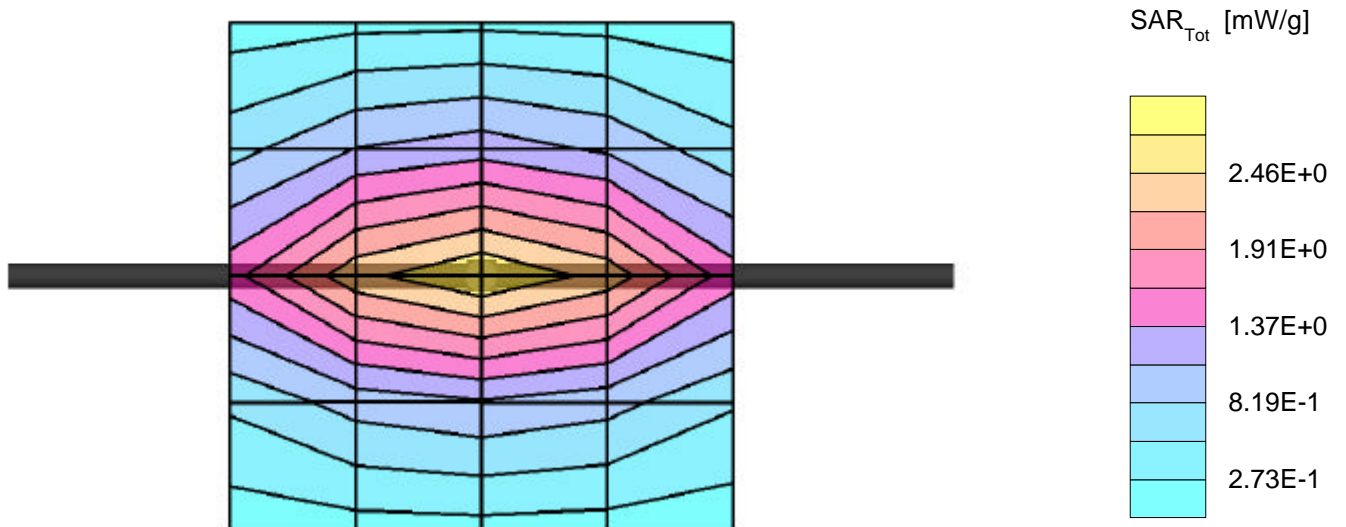
Cube 5x5x7: Peak: 4.24 mW/g, SAR (1g): 2.70 mW/g, SAR (10g): 1.72 mW/g, (Worst-case extrapolation)

Penetration depth: 12.0 (11.0, 13.2) [mm]

Powerdrift: -0.02 dB

Ambient Temperature (degree C): 23

Liquid Temperature (degree C): 20



# System Validation - D900V2 SN: 108

(Input power: 250 mW)

SAM;

Probe: ET3DV6 - SN1578; ConvF(7.00,7.00,7.00); Crest factor: 1.0

Head 900 MHz:  $\sigma = 0.94$  mho/m  $\epsilon_r = 41.6$   $\rho = 1.00$  g/cm<sup>3</sup>

: , , ()

Penetration depth: 12.0 (11.0, 13.3) [mm]

Ambient Temperature (degree C): 23

Liquid Temperature (degree C): 20

