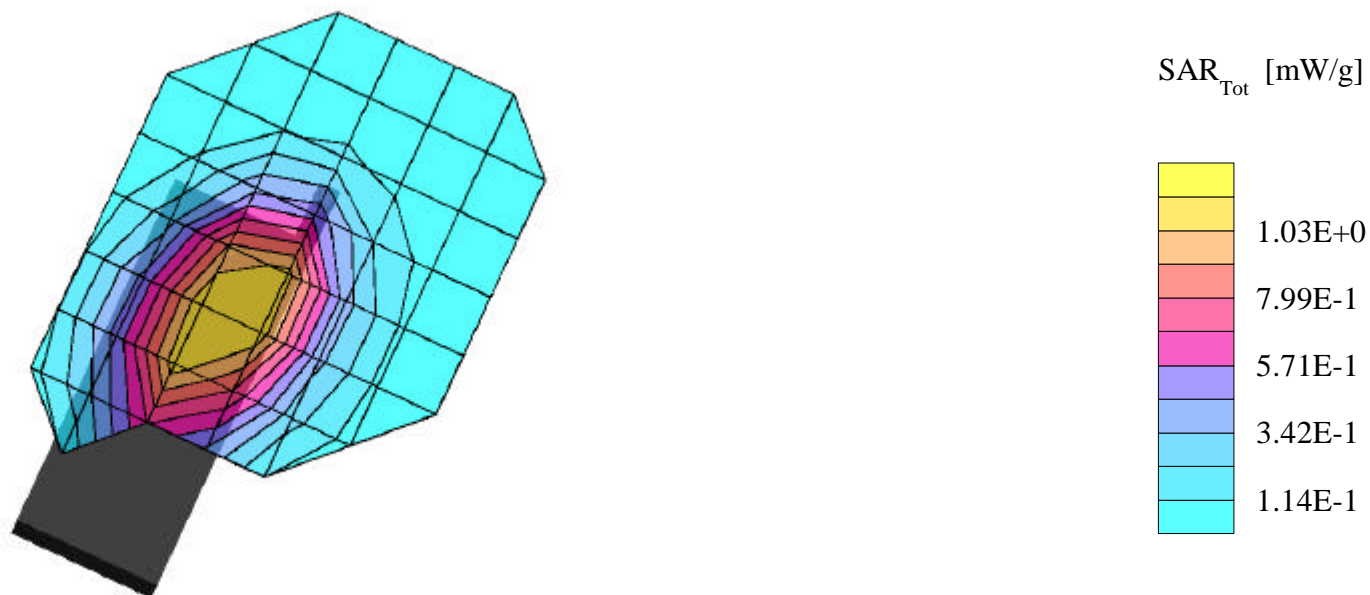


# HYUNDAI FCC ID:PP4DX-20B -- FM Head SAR

Generic Twin Phantom; Left Hand Section; Probe: ET3DV6 - SN1560 -- Probe Cal Date 20/02/01  
Med. Parameters 835 MHz Brain:  $\sigma = 0.90$  mho/m  $\epsilon_r = 41.5$   $\rho = 1.00$  g/cm<sup>3</sup>; Antenna Position -- Out; Crest Factor 1.0  
**SAR (1g): 1.23 mW/g, SAR (10g): 0.907 mW/g**

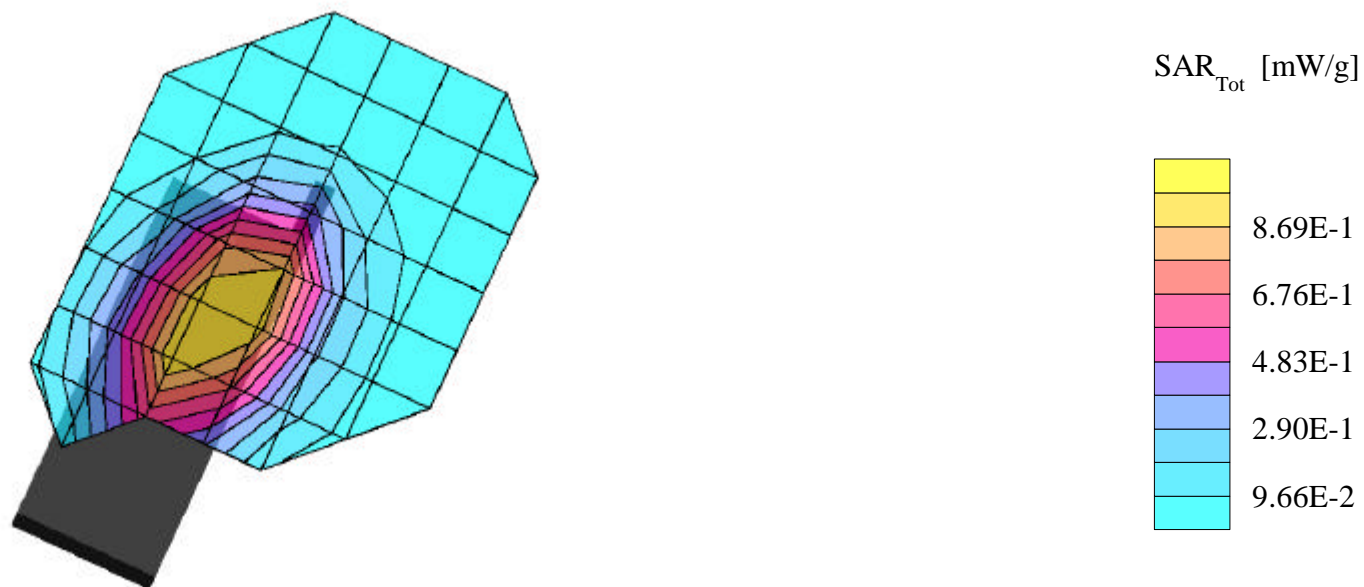
HYUNDAI DualMode Model:DX-20B  
FM Mode, Ch.0991 [824.04MHz]  
Conducted Power = 27.0dBm  
Test Date -- 06/11/2001



# HYUNDAI FCC ID:PP4DX-20B -- FM Head SAR

Generic Twin Phantom; Left Hand Section; Probe: ET3DV6 - SN1560 -- Probe Cal Date 20/02/01  
Med. Parameters 835 MHz Brain:  $\sigma = 0.90$  mho/m  $\epsilon_r = 41.5$   $\rho = 1.00$  g/cm<sup>3</sup>; Antenna Position -- Out; Crest Factor 1.0  
**SAR (1g): 1.08 mW/g, SAR (10g): 0.767 mW/g**

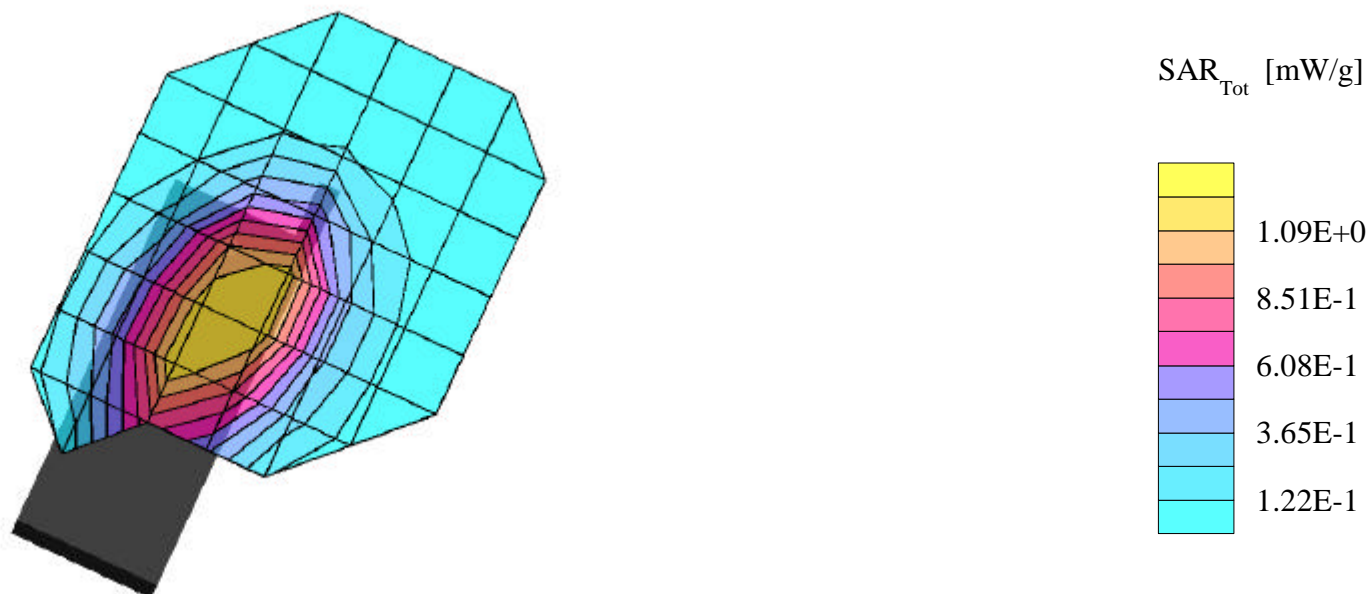
HYUNDAI DualMode Model:DX-20B  
FM Mode, Ch.0383 [836.49MHz]  
Conducted Power = 27.0dBm  
Test Date -- 06/11/2001



# HYUNDAI FCC ID:PP4DX-20B -- FM Head SAR

Generic Twin Phantom; Left Hand Section; Probe: ET3DV6 - SN1560 -- Probe Cal Date 20/02/01  
Med. Parameters 835 MHz Brain:  $\sigma = 0.90$  mho/m  $\epsilon_r = 41.5$   $\rho = 1.00$  g/cm<sup>3</sup>; Antenna Position -- Out; Crest Factor 1.0  
**SAR (1g): 1.31 mW/g, SAR (10g): 0.940 mW/g**

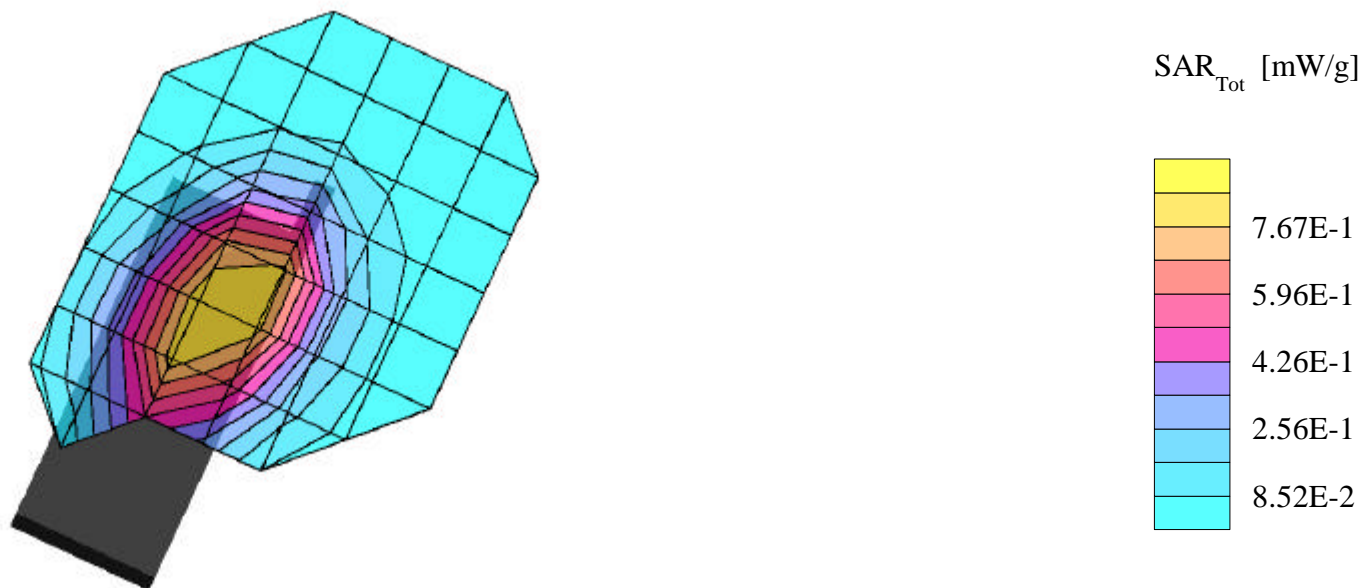
HYUNDAI DualMode Model:DX-20B  
FM Mode, Ch.0799 [848.97MHz]  
Conducted Power = 27.0dBm  
Test Date -- 06/11/2001



# HYUNDAI FCC ID:PP4DX-20B -- Cellular CDMA Head SAR

Generic Twin Phantom; Left Hand Section; Probe: ET3DV6 - SN1560 -- Probe Cal Date 20/02/01  
Med. Parameters 835 MHz Brain:  $\sigma = 0.90$  mho/m  $\epsilon_r = 41.5$   $\rho = 1.00$  g/cm<sup>3</sup>; Antenna Position -- Out; Crest Factor 1.0  
**SAR (1g): 0.957 mW/g, SAR (10g): 0.700 mW/g**

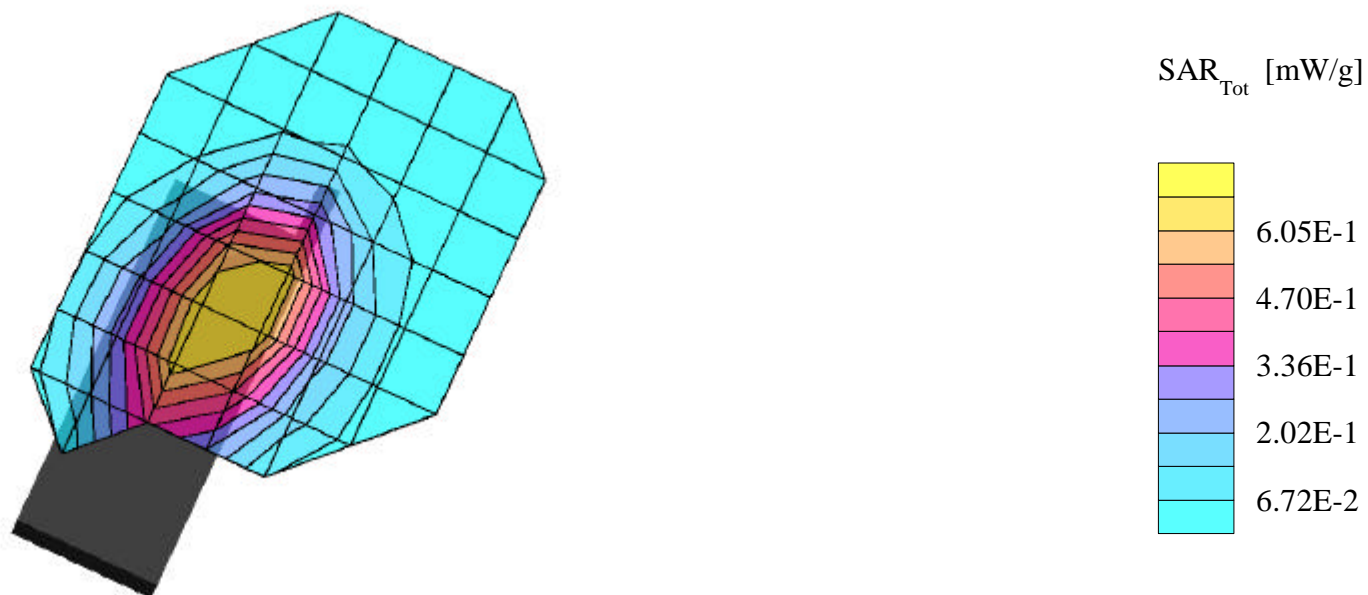
HYUNDAI DualMode Model:DX-20B  
Cellular CDMA Mode, Ch.1013 [824.70MHz]  
Conducted Power = 25.5dBm  
Test Date -- 06/11/2001



# HYUNDAI FCC ID:PP4DX-20B -- Cellular CDMA Head SAR

Generic Twin Phantom; Left Hand Section; Probe: ET3DV6 - SN1560 -- Probe Cal Date 20/02/01  
Med. Parameters 835 MHz Brain:  $\sigma = 0.90$  mho/m  $\epsilon_r = 41.5$   $\rho = 1.00$  g/cm<sup>3</sup>; Antenna Position -- Out; Crest Factor 1.0  
**SAR (1g): 0.757 mW/g, SAR (10g): 0.550 mW/g**

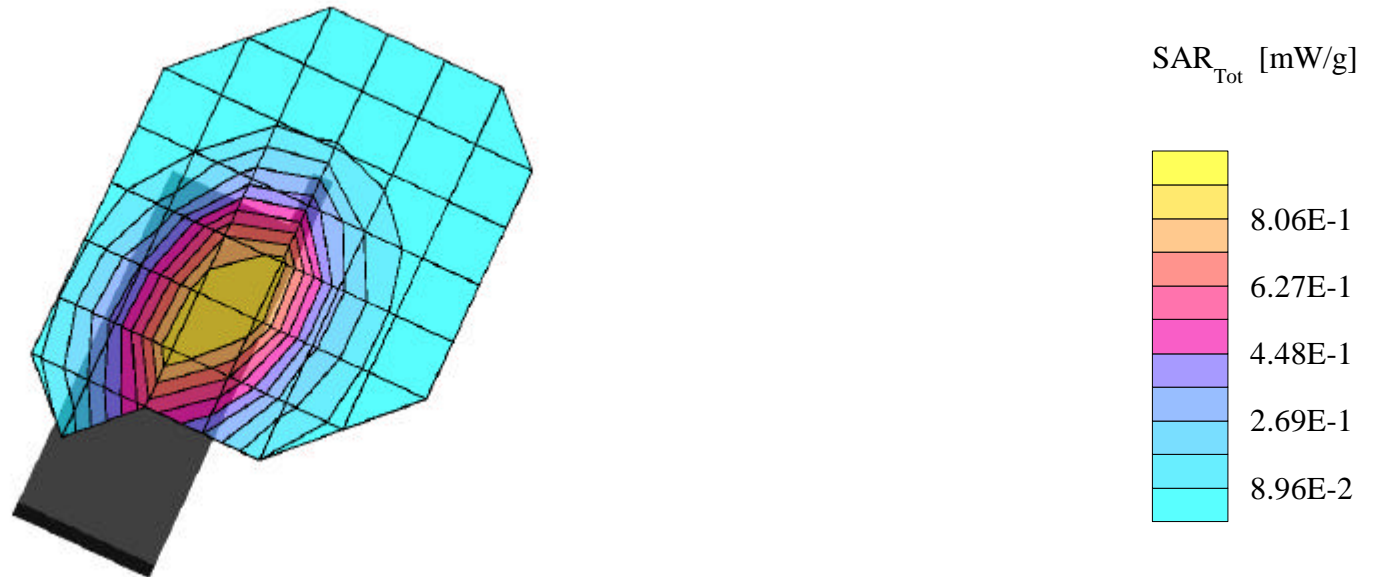
HYUNDAI DualMode Model:DX-20B  
Cellular CDMA Mode, Ch.0363 [835.89MHz]  
Conducted Power = 25.5dBm  
Test Date -- 06/11/2001



# HYUNDAI FCC ID:PP4DX-20B -- Cellular CDMA Head SAR

Generic Twin Phantom; Left Hand Section; Probe: ET3DV6 - SN1560 -- Probe Cal Date 20/02/01  
Med. Parameters 835 MHz Brain:  $\sigma = 0.90$  mho/m  $\epsilon_r = 41.5$   $\rho = 1.00$  g/cm<sup>3</sup>; Antenna Position -- Out; Crest Factor 1.0  
**SAR (1g): 1.00 mW/g, SAR (10g): 0.729 mW/g**

HYUNDAI DualMode Model:DX-20B  
Cellular CDMA Mode, Ch.0777 [848.37MHz]  
Conducted Power = 25.5dBm  
Test Date -- 06/11/2001



# HYUNDAI FCC ID:PP4DX-20B -- FM Body SAR

Generic Twin Phantom; Flat Section; Probe: ET3DV6 - SN1560 -- Probe Cal Date 20/02/01

Med. Parameters 835 MHz Muscle:  $\sigma = 0.95$  mho/m  $\epsilon_r = 56.2$   $\rho = 1.00$  g/cm<sup>3</sup>; Antenna Position -- Out; Crest Factor 1.0

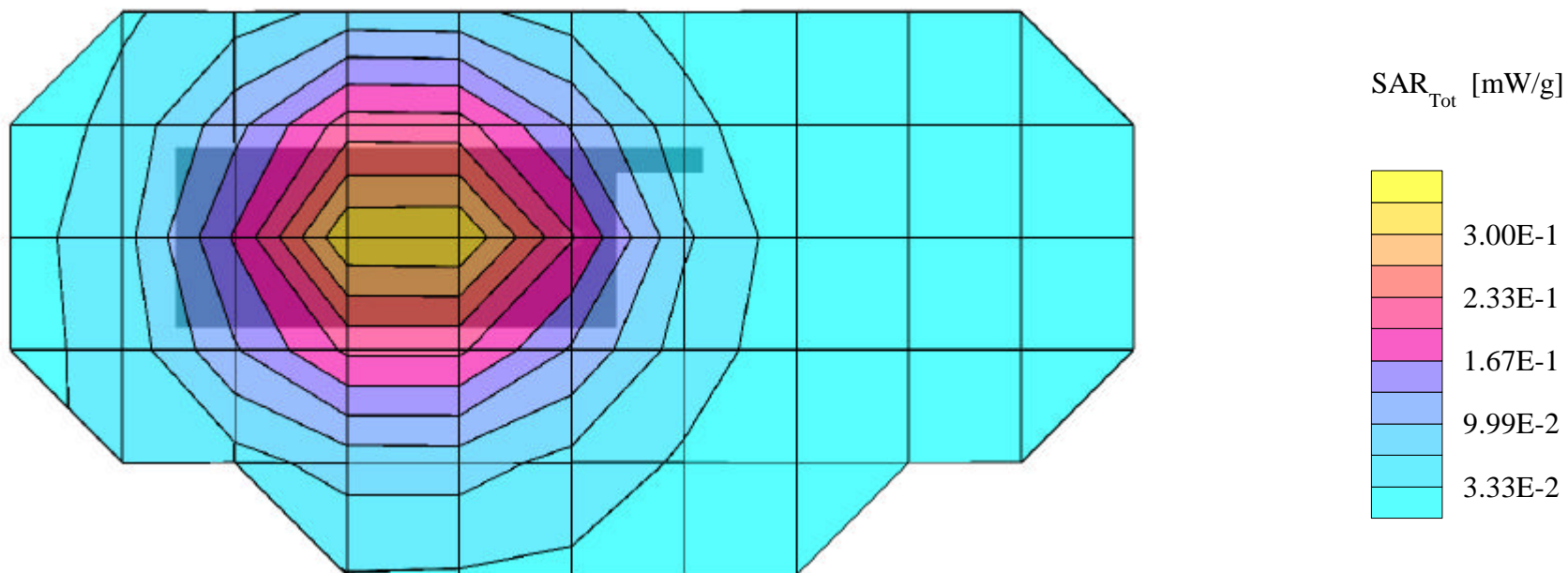
**SAR (1g): 0.358 mW/g, SAR (10g): 0.258 mW/g**

HYUNDAI DualMode Model:DX-20B

FM Mode, Ch.0991 [824.04MHz]

Conducted Power = 27.0dBm; Spacing = 2.5cm from flat phantom to phone, w/Holster

Test Date -- 06/11/2001



# HYUNDAI FCC ID:PP4DX-20B -- FM Body SAR

Generic Twin Phantom; Flat Section; Probe: ET3DV6 - SN1560 -- Probe Cal Date 20/02/01

Med. Parameters 835 MHz Muscle:  $\sigma = 0.95$  mho/m  $\epsilon_r = 56.2$   $\rho = 1.00$  g/cm<sup>3</sup>; Antenna Position -- Out; Crest Factor 1.0

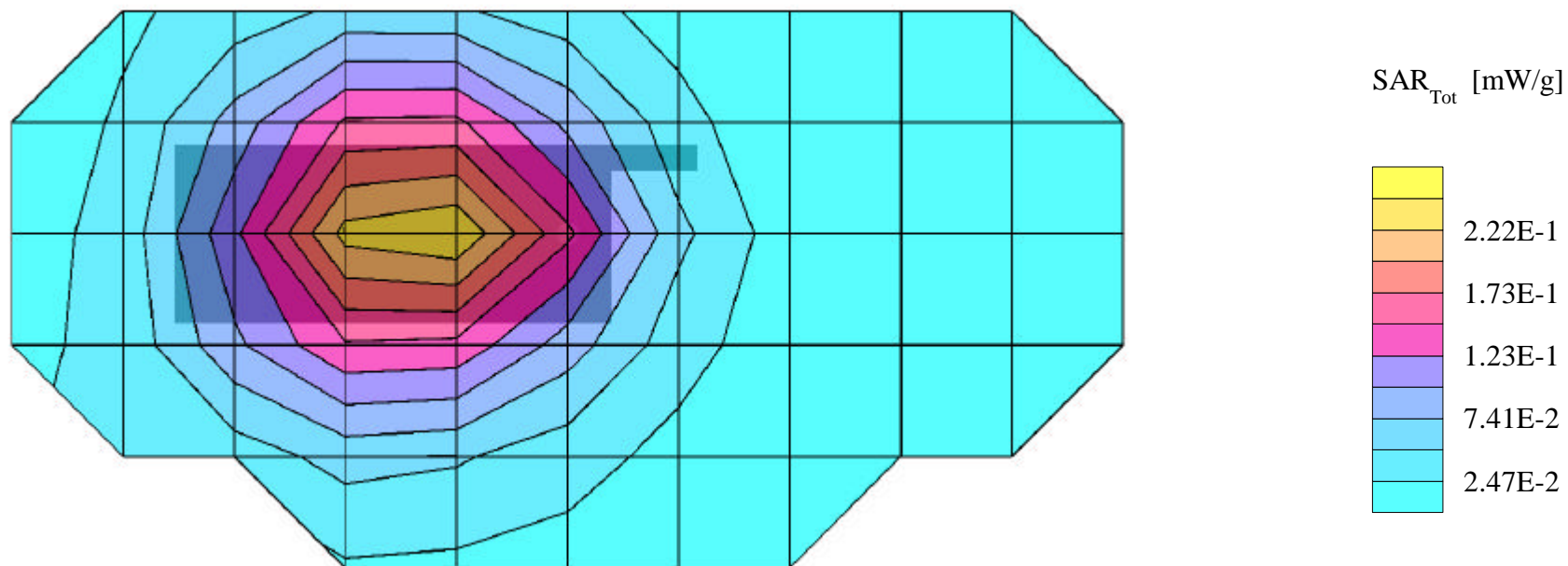
**SAR (1g): 0.258 mW/g, SAR (10g): 0.185 mW/g**

HYUNDAI DualMode Model:DX-20B

FM Mode, Ch.0383 [836.49MHz]

Conducted Power = 27.0dBm; Spacing = 2.5cm from flat phantom to phone, w/Holster

Test Date -- 06/11/2001





# HYUNDAI FCC ID:PP4DX-20B -- FM Body SAR

Generic Twin Phantom; Flat Section; Probe: ET3DV6 - SN1560 -- Probe Cal Date 20/02/01

Med. Parameters 835 MHz Muscle:  $\sigma = 0.95$  mho/m  $\epsilon_r = 56.2$   $\rho = 1.00$  g/cm<sup>3</sup>; Antenna Position -- Out; Crest Factor 1.0

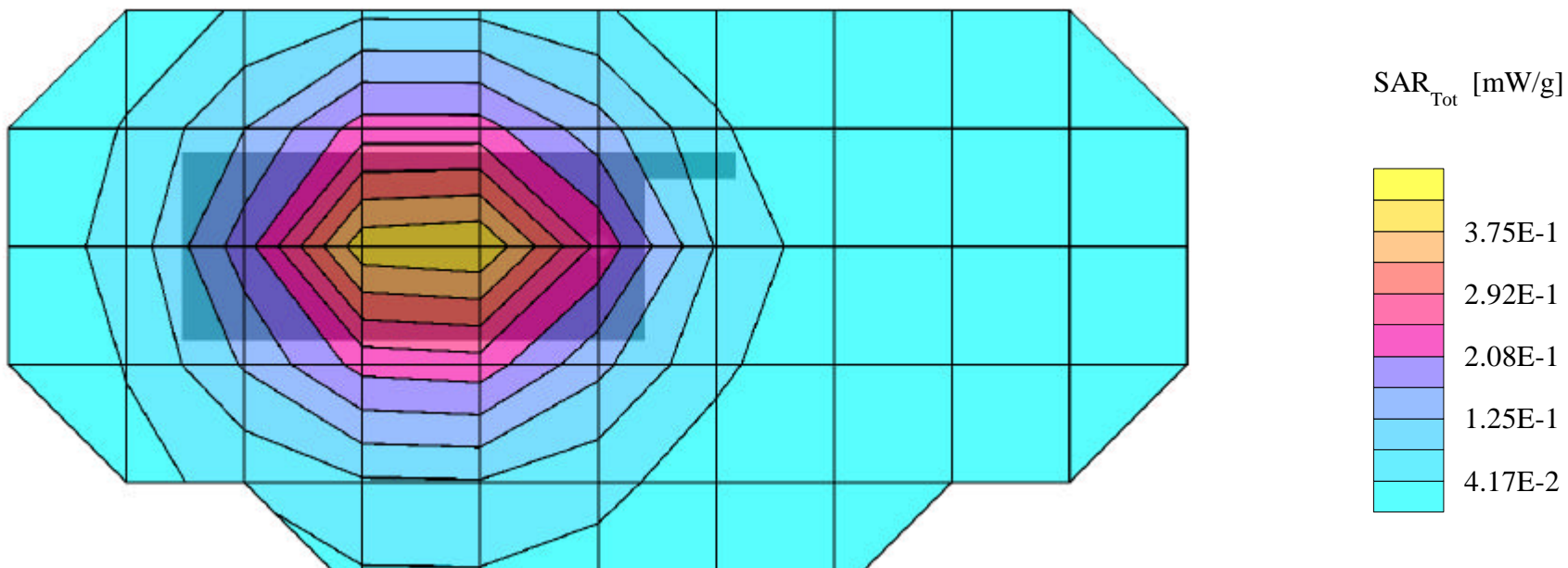
**SAR (1g): 0.419 mW/g, SAR (10g): 0.300 mW/g**

HYUNDAI DualMode Model:DX-20B

FM Mode, Ch.0799 [848.97MHz]

Conducted Power = 27.0dBm; Spacing = 2.5cm from flat phantom to phone, w/Holster

Test Date -- 06/11/2001



# HYUNDAI FCC ID:PP4DX-20B -- Cellular CDMA Body SAR

Generic Twin Phantom; Flat Section; Probe: ET3DV6 - SN1560 -- Probe Cal Date 20/02/01

Med. Parameters 835 MHz Muscle:  $\sigma = 0.95$  mho/m  $\epsilon_r = 56.2$   $\rho = 1.00$  g/cm<sup>3</sup>; Antenna Position -- Out; Crest Factor 1.0

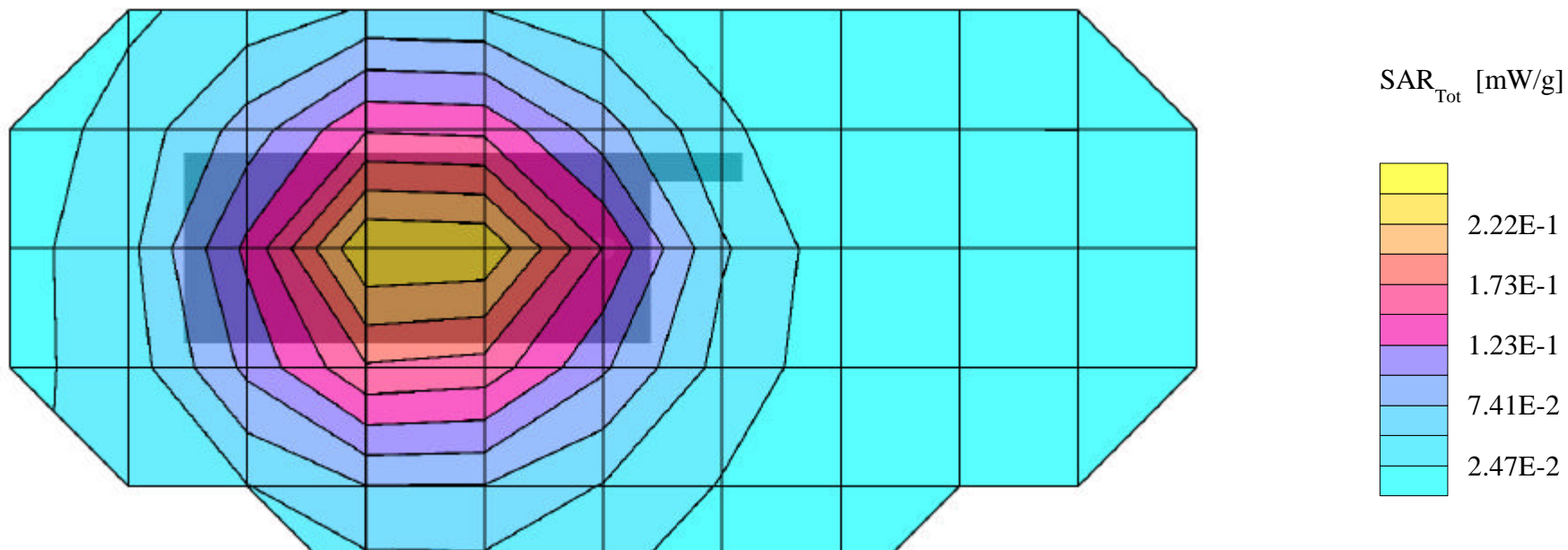
**SAR (1g): 0.267 mW/g, SAR (10g): 0.193 mW/g**

HYUNDAI DualMode Model:DX-20B

Cellular CDMA Mode, Ch.1013 [824.70MHz]

Conducted Power = 25.5dBm; Spacing = 2.5cm from flat phantom to phone, w/Holster

Test Date -- 06/11/2001



# HYUNDAI FCC ID:PP4DX-20B -- Cellular CDMA Body SAR

Generic Twin Phantom; Flat Section; Probe: ET3DV6 - SN1560 -- Probe Cal Date 20/02/01

Med. Parameters 835 MHz Muscle:  $\sigma = 0.95$  mho/m  $\epsilon_r = 56.2$   $\rho = 1.00$  g/cm<sup>3</sup>; Antenna Position -- Out; Crest Factor 1.0

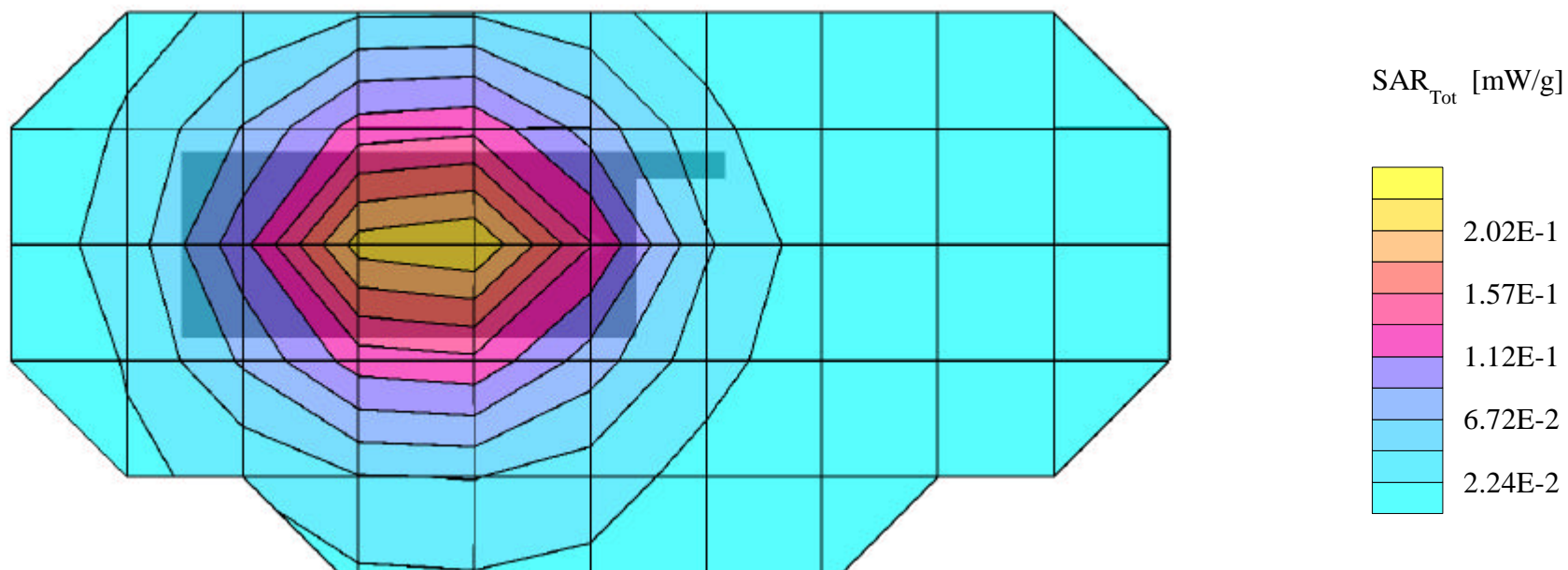
**SAR (1g): 0.239 mW/g, SAR (10g): 0.171 mW/g**

HYUNDAI DualMode Model:DX-20B

Cellular CDMA Mode, Ch.0363 [835.89MHz]

Conducted Power = 25.5dBm; Spacing = 2.5cm from flat phantom to phone, w/Holster

Test Date -- 06/11/2001



# HYUNDAI FCC ID:PP4DX-20B -- Cellular CDMA Body SAR

Generic Twin Phantom; Flat Section; Probe: ET3DV6 - SN1560 -- Probe Cal Date 20/02/01

Med. Parameters 835 MHz Muscle:  $\sigma = 0.95$  mho/m  $\epsilon_r = 56.2$   $\rho = 1.00$  g/cm<sup>3</sup>; Antenna Position -- Out; Crest Factor 1.0

**SAR (1g): 0.248 mW/g, SAR (10g): 0.179 mW/g**

HYUNDAI DualMode Model:DX-20B

Cellular CDMA Mode, Ch.0777 [848.37MHz]

Conducted Power = 25.5dBm; Spacing = 2.5cm from flat phantom to phone, w/Holster

Test Date -- 06/11/2001

