

**Note:**

This device complies with Part 15 of the FCC rules. Operation is subject to the following two conditions:

- (1) This device may not cause harmful interference, and
- (2) This device must accept any interference received, including interference that may cause undesired operation.

**Caution!**

The manufacturer is not responsible for any radio or TV interference caused by unauthorized modifications to this equipment. Such modifications could void the user authority to operate the equipment.

## Step1. Inserting Batteries

1. Remove the battery cover.
2. Insert 2 AAA batteries.
3. Place back the battery cover. As the Mouse has power switch, please make sure the power switch is on.



## Step2. Connecting the Mouse to the Dongle

Before you install the Bluetooth Mouse, please make sure that your computer supports Bluetooth function, and has finished the Bluetooth software installation. Software available like Wincomm, IVT or the Microsoft built-in software.

Press the connect button at the bottom, then the Mouse is ready for the match, please note that the connect button is only useful during the match procedure.

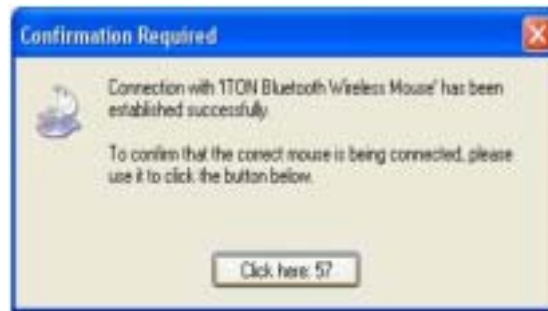
## Match Procedure

### A. Match on Wincomm

1. Double click the icon again, "My Bluetooth Place" pops up.
2. Click "Bluetooth Setup – Bluetooth Setup Guide".
3. In the Setup Guide window, click next button, wait until the system finds the mouse, select

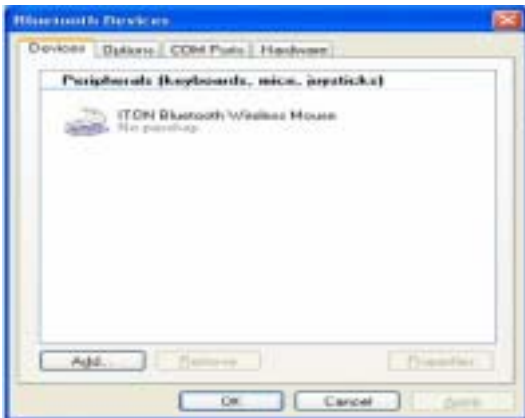
“Mouse”, click “Next”. Hint for connection.

4. Click “Click here”, now you can use your mouse at ease.



## B. Match on Microsoft built-in software

1. Make sure that the Bluetooth Function has been activated. Double click the Bluetooth Icon on the Task Bar or in the Control Panel, open the “Bluetooth Management” window, click “Add”, tick off “facility is ready for searching”, click “Next”.



2. Wait till the Mouse is found, select mouse, click “Next”.



3. Select “No Password”, click “Next”, the system will install the new facility automatically.



### C. Match on IVT software

1. Make sure that the Bluetooth Function has been activated. Double click the Bluetooth Icon, open the Management window, select “Search for Bluetooth facilities” or click the Round Ball in the middle of the window.
2. Click the Bluetooth Mouse founded, click the right button for “Refresh Service”.



3. Select the Bluetooth Mouse again, click the right button for “Connect- Bluetooth Input Service”, the system will auto install the HID facility. After that you can use you Bluetooth Mouse at ease.



## Mouse Function



## Speed Control

Press the CPI button and you can toggle the CPI between 800 CPI and 1600 CPI (Laser Version, Optical is between 500 CPI and 1000 CPI)

## Troubleshooting

1. Before you install your Bluetooth Mouse, please make sure you have done the Bluetooth Dongle installation procedure, and the Bluetooth facility is turned on.
2. If you press the Connect Button inadvertently or some abnormal disconnection occurs during using, please reconnect the mouse. If unable to rematch, kindly delete the Mouse Icon to erase the stored info of the mouse in the computer.
3. Make sure there is no change of the Bluetooth facility. If anything changed, please kindly rematch.
4. Please kindly check the batteries. If they are short of power, replace them with new ones.