

# H1030

## 無線立體聲麥克風耳機

### Wireless Stereo Headset Quick Installation Guide

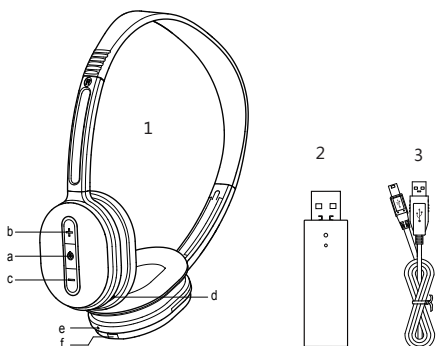
包裝內容	Package contents
1. 耳麥	1. Headset
2. 髮射器	2. Transmitter
3. USB充電線	3. USB Charging cable

#### 耳麥功能示意圖

- a. 電源開關 (電源指示燈)
- b. 音量 (+)
- c. 音量 (-)
- d. 內置麥克風
- e. 充電指示燈
- f. USB充電口

#### Headset scheme

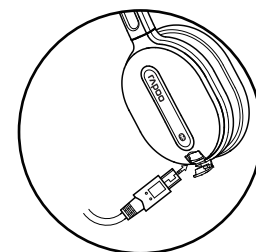
- a. Power button (Power LED)
- b. Volume+
- c. Volume-
- d. Built-in microphone
- e. Charging LED
- f. USB charging port



#### 耳麥充電 Charging

耳麥內置鋰電池，可用隨機附贈的USB充電線充電。打開耳麥USB蓋，將耳麥連接到USB充電線，充電線的另一端連接到電腦的USB埠上即可充電。充電時充電指示燈長亮，充滿電時指示燈會熄滅，充電時間約2小時。當電壓不足時，電源指示燈閃爍，提醒充電後使用。

The headset has a built-in Lithium battery, which can be charged by the attached USB cable. Open the USB cover, connect the headset to the USB charging cable, and connect the cable to your computer. The charging LED will be on when charging, and it will be off when the battery is fully charged. The full charging time is about 2 hours. While being used, a blinking power switch on the headset means the headset needs charging.



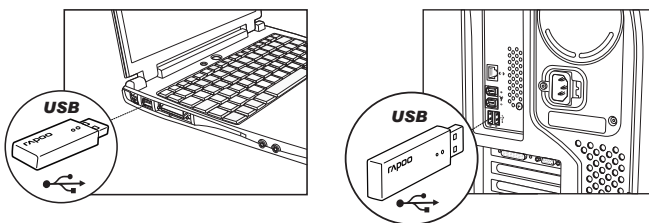
#### 頭帶調節 Headband adjustment

耳麥兩個的頭帶可以伸縮，可根據個人情況調節頭帶長度，以便更舒適更輕鬆地享受音樂。

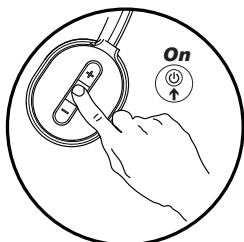
注：將頭帶旋轉90°平放後，不能再拉頭帶，否則會將頭帶拉壞。  
Pull out and in the headband to adjust the length of the headband for different users.  
Note: Please do not pull the headband heavily, or it will go bad easily.

#### 安裝步驟 Installation

- 1** 將發射器連接到電腦USB埠上。  
注：插入發射器前，請先關閉所有多媒體播放器，以保證耳麥正常使用。  
Connect the transmitter to your computer.  
Note: Please turned off all media players before you insert the transmitter.



- 2** 打開耳麥開關，電源指示燈閃爍後長亮，連接成功，即可進入工作模式。  
Switch on the headset, the power LED will blink and then stay on, which means the headset is ready to use.



#### 90° 旋轉式耳罩 90° rotatable ear cover

當頭帶推至底部時，可將耳罩旋轉90°平放，方便攜帶。  
When the headband is pushed to the bottom, the ear cover can be rotated 90° to be parallel with headband, which facilitates you.



#### 自動關機功能 Automatically power off

耳麥開機狀態下，5分鐘無連接將會自動關機。  
When being used, the headset will automatically power off if no connection in 5 minutes.

#### 配對說明 Pairing description

- 耳麥：開機狀態下，長按耳麥的電源開關約5秒，進入配對狀態，電源指示燈快閃，配對完成後電源指示燈長亮。
- 發射器：用尖細的物品按住對碼開關，對碼指示燈快閃，進入配對狀態，配對完成後，對碼指示燈長亮。

- Headset: when being used, press the power button for about 5 seconds, the power LED will blink quickly, then it will be on after pairing is finished.
- Transmitter: use a sharp stick or something similar to press the pairing button, the pairing LED will blink quickly, then it will be on after pairing is finished.

#### 故障分析 Troubleshooting

現象：耳麥無連接

解決辦法：

- 檢查耳麥是否電量不足，充電後再使用；
- 請確認電源開關是否正常開啟；
- 如以上方法仍不能解決此問題，請重新配對，配對方法見配對說明。

現象：接收距離短

解決辦法：

- 4G無線耳麥和發射器均與家用無線網路設備、微波爐、藍牙、無線電話等同頻率時使用可能會互相干擾，使用時儘量與上述設備保持距離。

Problem: No connection

- Solution: 1. Make sure you have charged the headset;  
2. Make sure you have turned on the power button;  
3. Please pair it according to pairing description, if you can not solve it yet.

Problem: Interference with other devices

- Solution: Move the headset and transmitter away from other wireless devices working at the same frequency, such as wireless network device, microwave oven, wireless telephone and so on.

#### 注意事項 Warning

- 為保護聽力，初次使用時請將音源設備音量調小，再逐步增大至合適。
- 請儘量保持發射器周圍無障礙或阻隔，以獲得最佳的效果。
- 使用環境必須保持乾燥、陰涼、通風。
- 請不要隨意打開或者修理該設備。

- Please turn down device for the first time use, and then turn up it gradually so as to prevent your hearing.
- Please keep the transmitter away from other devices at the same frequency.
- Do not use the device in a damp environment. Clean the device with a dry cloth.
- Do not open or repair this device.

#### 符合性聲明 Declaration of conformity

深圳雷柏科技股份有限公司特此聲明：本設備符合1995/5/EC指令的基本要求和相關條款。

Hereby, Shenzhen Rapoo Technology Co., Ltd declares that this device is in compliance with the essential requirements and other relevant provisions of Directive 1995/5/EC.

#### 知識產權資訊 Copyright

未經雷柏許可，禁止複製本快速安裝指南的內容。  
It is forbidden to reproduce any part of this quick start guide without the permission of Rapoo Technology Co., Ltd.

#### 質保條款 Warranty

本設備提供自購買之日起2年的有限產品硬體保修服務，具體詳情請查閱www.rapoo.com/warranty。  
The device is provided with two-year limited hardware warranty from the purchase day. Please see www.rapoo.com/warranty for more information.

# H1030

無線立體聲麥克風耳機

## Wireless Stereo Headset

### Quick Installation Guide

#### NCC警語

根據交通部低功率管理辦法規定：

##### 第十二條

經型式認證合格之低功率射頻電機，非經許可，公司、商號或使用者均不得擅自變更頻率、加大功率或變更原設計之特性及功能。

##### 第十四條

低功率射頻電機之使用不得影響飛航安全及干擾合法通信；經發現有干擾現象時，應立即停用，並改善至無干擾時方得繼續使用。

前項合法通信，指依電信規定作業之無線電信。低功率射頻電機須忍受合法通信或工業、科學及醫療用電波輻射性電機設備之干擾。

#### FCC Statement

This equipment has been tested and found to comply with the limits for a Class B digital device, pursuant to part 15 of the FCC rules. These limits are designed to provide reasonable protection against harmful interference in a residential installation. This equipment generates, uses and can radiate radio frequency energy and, if not installed and used in accordance with the instructions, may cause harmful interference to radio communications. However, there is no guarantee that interference will not occur in a particular installation. If this equipment does cause harmful interference

to radio or television reception, which can be determined by turning the equipment off and on, the user is encouraged to try to correct the interference by one or more of the following measures:

- Reorient or relocate the receiving antenna.
- Increase the separation between the equipment and receiver.
- Connect the equipment into an outlet on a circuit different from that to which the receiver is connected.
- Consult the dealer or an experienced radio/TV technician for help.

To assure continued compliance, any changes or modifications not expressly approved by the party responsible for compliance could void the user's authority to operate this equipment. (Example- use only shielded interface cables when connecting to computer or peripheral devices).

This transmitter must not be co-located or operating in conjunction with any other antenna or transmitter. This equipment complies with Part 15 of the FCC Rules. Operation is subject to the following two conditions:

- (1) This device may not cause harmful interference, and
- (2) This device must accept any interference received, including interference that may cause undesired operation.

#### Caution!

The manufacturer is not responsible for any radio or TV interference caused by unauthorized modifications to this equipment. Such modifications could void the user authority to operate the equipment.

#### Canada Statement

This device complies with Industry Canada licence-exempt RSS standard(s). Operation is subject to the following two conditions: (1) this device may not cause interference, and (2) this device must accept any interference, including interference that may cause undesired operation of the device.

Le présent appareil est conforme aux CNR d'Industrie Canada applicables aux appareils radio exempts de licence. L'exploitation est autorisée aux deux conditions suivantes : (1) l'appareil ne doit pas produire de brouillage, et (2) l'utilisateur de l'appareil doit accepter tout brouillage radioélectrique subi, même si le brouillage est susceptible d'en compromettre le fonctionnement.