

E2700 無線多媒體觸摸鍵盤

Wireless Multi-media Touchpad Keyboard

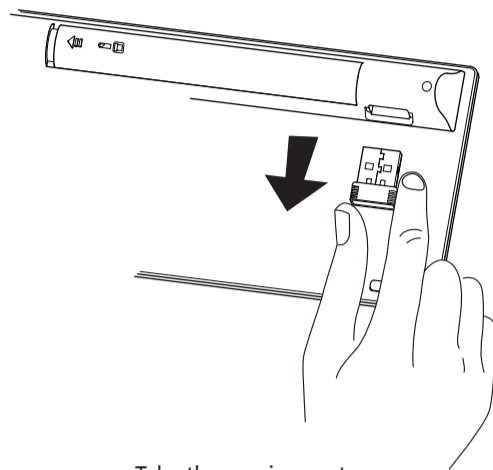
Quick Start Guide (V1.0)

The ultimate Wireless

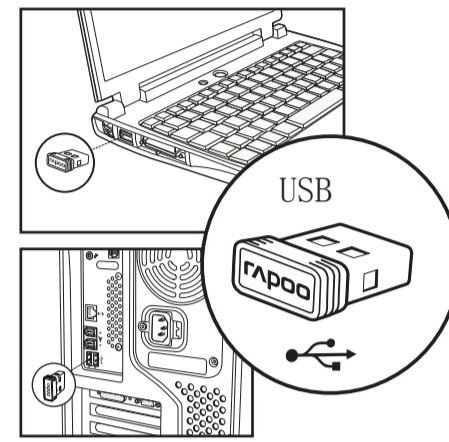
RAPOO 雷柏



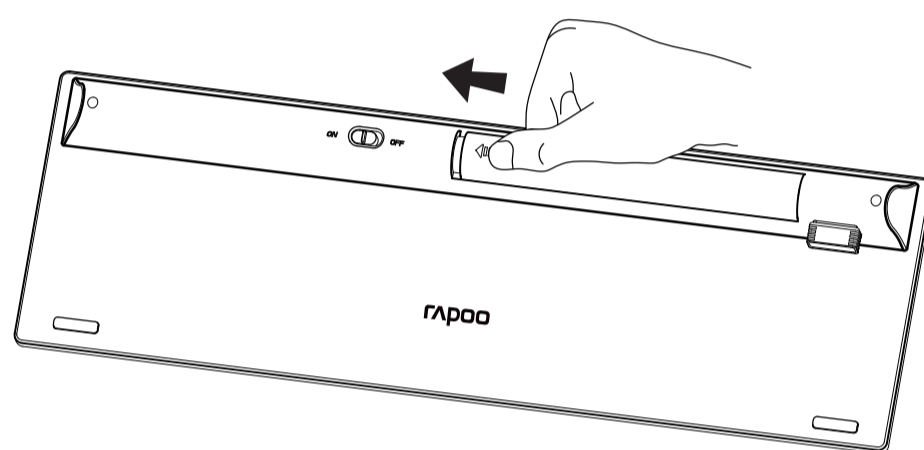
Turn on the Keyboard.



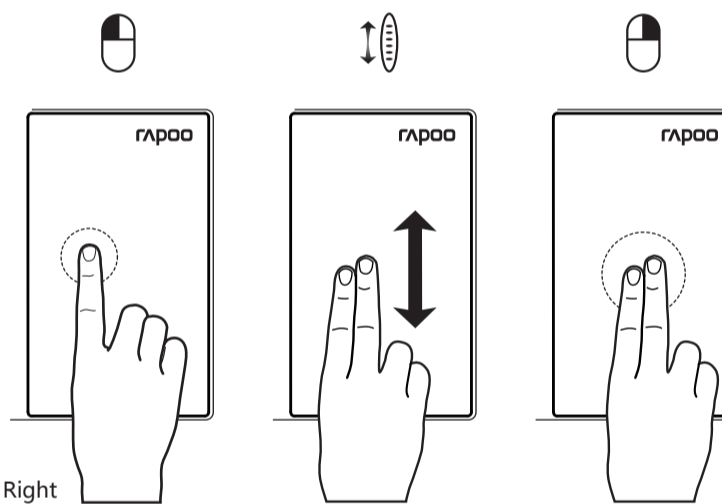
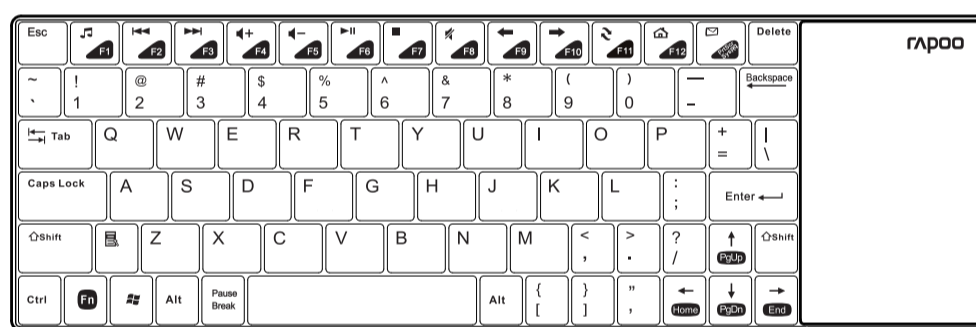
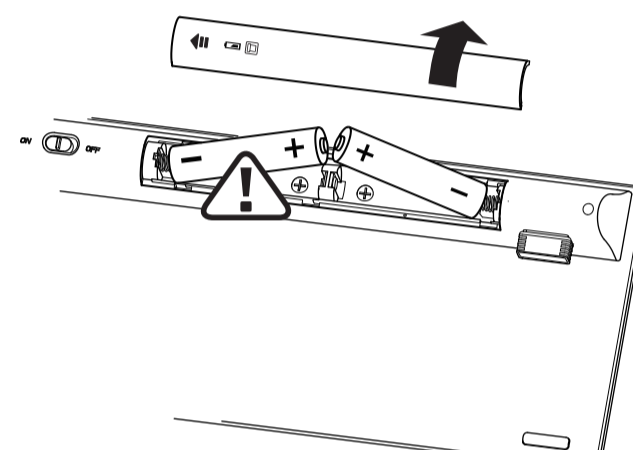
Take the receiver out.



Plug the receiver into the USB port on you PC.



Open the cover as showing, then you can change the batteries, please place batteries correctly.



The touchpad could be used as a mouse, single finger touch equal to Left Click, double finger touch equal to Right Click and double finger slide up and down equal to scroll wheel scrolling forward or backward.

Troubleshooting

See www.rapoo.com/E2700/faq for latest FAQs, drivers and quick start guide. For extensive service, register at www.rapoo.com/register.

Copyright

It is forbidden to reproduce any part of this quick start guide without the permission of Rapoo Technology Co., Ltd.

Safety instructions

Do not open or repair this device. Do not use the device in a damp environment. Clean the device with a dry cloth.

Warranty

The device is provided with one-year limited hardware warranty from the purchase day. Please see www.rapoo.com/warranty for more information.

故障分析

請到www.rapoo.com/E2700/faq查詢最新常見問題。請到www.rapoo.com/E2700/download下載最新的驅動和快速安裝指南。如需延長服務，請到www.rapoo.com/register註冊。

知識產權信息

未經雷柏的許可，禁止複製本快速安裝指南的內容。

安全提醒

請不要打開或修理該設備。請不要在潮濕的環境使用該設備。請用干布擦拭該設備。

質保條款

本設備提供自購買之日起1年的有限產品硬體保固服務，具體詳情請查閱www.rapoo.com/warranty。

故障分析

請到www.rapoo.com/E2700/faq查詢最新常見問題。請到www.rapoo.com/E2700/download下載最新的驅動和快速安裝指南。如需延長服務，請到www.rapoo.com/register註冊。

智慧財產權資訊

未經雷柏的許可，禁止複製本快速安裝指南的內容。

安全提醒

請不要打開或修理該設備。請不要在潮濕的環境使用該設備。請用干布擦拭該設備。

質保條款

本設備提供自購買之日起1年的有限產品硬體保固服務，具體詳情請查閱www.rapoo.com/warranty。

문제 해결

최근 미국의 소리는 이전 공, 드라이버 및 펌 스타트 가이드에 대한 www.rapoo.com/E2700/faq를 참조하십시오. 광범위한 서비스를 위해, 예 등록 www.rapoo.com/ 등록하십시오.

저작권

이 간편 시작 설명서의 어떤 부분도 Rapoo Technology Co., Ltd. 의 허가 없이 복제될 수 없습니다.

안전 지침

이 장치를 열거나 수리하지 마십시오. 장치를 습한 환경에서 사용하지 마십시오. 장치를 마른 걸레로 닦으십시오.

보증

이 장치에는 구매일로부터 1년간의 유한 하드웨어 보증이 제공됩니다. 자세한 내용은 www.rapoo.com/warranty를 참조하십시오.

保修期限	日期	维修情况
购买日期		
购买地点		
产品序列号		
售后服务		
盖章		

注意：该设备为自行组装，恕不提供免费上门服务。如需保修，请至本品牌售后服务点，以维护您的合法权益。如有服务或有其他问题，请咨询当地经销商或与我们联系。



MIN: R3A215



R3A215



KC



KC

补偿

在保质期内，您享有以下售后权利：(1) 7天内出现质量问题，根据国家“三包”规定予以产品外换或退货。将硬件退还给购买地点或雷柏指定地点。先购买的有效凭证，退回您所支付的硬件产品货款。(2) 40天内出现产品质量问题，您可以到购买地点或者雷柏指定地点更换硬件产品，或者到雷柏指定的维修网点保修。更换之后的硬件保质期与原保质期保持一致。(3) 1年内出现产品质量问题，您可以到雷柏指定的维修网点保修。(4) 凡购买系列产品的客户，1年内产品出现质量问题，您可以到雷柏经销商处更换新品。

质保限制

本产品质量不受限于以下原因导致的印刷或损坏：(1) 意外事件、误用、操作不当或任何未经授权的操作、改装或拆卸。(2) 操作或维护不当。适用过程中造成产品损坏或连接到不适当的电压源，或者(3) 适用并非由雷柏提供的消耗品(如备用电池)，但适用法律禁止此类限制的情况除外。

Country (or area)	Information	Description
Hongkong	Company name: Vm Yield Company Address: 香港九龍牛車水第20號怡生工業大廈2字樓全層 Tel#: 852-31522780	
Malaysia	Company name: AV FUTURE LINK SDN BHD Address: NO.23A JALAN 5/152 TAMAN PERINDUSTRIAN CUSUPUCHONG 36020 KUALA LUMPUR, MALAYSIA Tel#: +0060377830011	
Viet Nam	Tên công ty: CÔNG TY CỔ PHẦN KỸ THUẬT CÔNG NGHỆ NAM THÁNH Địa chỉ: Số 7, Ng. 14A, Khu Đô Thị Mới Trung Yên, Đường Trưng Hòa, Quận Cầu Giấy, Hà Nội, Việt Nam Điện thoại: 0084-4-37834530	
台湾	公司名称: 達利電子有限公司 地址: 新北市土城區新街五路一段79號13樓 電話: (+886) 2-2898 1965	
中國大陸	公司名称: 雷柏雷柏電子有限公司 地址: 深圳市龍崗中心區龍崗路4068号卓越時代廣場41層 電話: (+86) 755-23995550	

部件名称	有毒有害物质元素					
	铅 (Pb)	汞 (Hg)	镉 (Cd)	六价铬 (Cr (VI))	多溴联苯 (PBB)	多溴二苯醚 (PBDE)
电缆Cable	○	○	○	○	○	○
电源线附件PWA	○	○	○	○	○	○
塑料附件Plastic parts	○	○	○	○	○	○
薄膜 Membrane	○	○	○	○	○	○
金属附件Metal parts	○	○	○	○	○	○
橡胶附件 Rubber case	○	○	○	○	○	○

○表示该有害物质在该部件所有均质材料中的含量均在SJ/T 11363-2006标准规定的限量要求以下。
注：环保使用期限的参考标准取决于产品正常工作的温度和湿度等条件。

FCC Statement
This equipment has been tested and found to comply with the limits for a Class B digital device, pursuant to part 15 of the FCC rules. These limits are designed to provide reasonable protection against harmful interference in a residential installation. This equipment generates, uses and can radiate radio frequency energy and, if not installed and used in accordance with the instructions, may cause harmful interference to radio communications. However, there is no guarantee that interference will not occur in a particular installation. If this equipment does cause harmful interference to radio or television reception, which can be determined by turning the equipment off and on, the user is encouraged to try to correct the interference by one or more of the following measures:
-Reorient or relocate the receiving antenna.
-Increase the separation between the equipment and receiver.
-Connect the equipment into an outlet on a circuit different from that to which the receiver is connected.
-Consult the dealer or an experienced radio/TV technician for help.
To assure continued compliance, any changes or modifications not expressly approved by the party responsible for compliance could void the user's authority to operate this equipment. (Example - use only shielded interface cables when connecting to computer or peripheral devices).
This equipment complies with Part 15 of FCC RF Rules. Operation is subject to the following two conditions:
1) This device may not cause interference and
2) This device must accept any interference, including interference that may cause undesired operation of the device.
Caution!
The manufacturer is not responsible for any radio or TV interference caused by unauthorized modifications to this equipment. Such modifications could void the user authority to operate the equipment.
Canada Statement
This device complies with Industry Canada licence-exempt RSS standard(s). Operation is subject to the following two conditions: (1) this device may not cause interference, and (2) this device must accept any interference, including interference that may cause undesired operation of the device.
Le présent appareil est conforme aux CNR d'Industrie Canada applicables aux appareils radio exempts de licence. L'exploitation est autorisée aux deux conditions suivantes: (1) l'appareil ne doit pas produire de brouillage, et (2) l'utilisateur de l'appareil doit accepter tout brouillage radioélectrique subi, même si le brouillage est susceptible d'en compromettre le fonctionnement.

NCC 警告語

根據交通部低功率管理辦法規定：
第十二條 經型式認證合格之低功率射頻電機，非經許可，公司、商號或使用者均不得擅自變更頻率、加大功率或變更原設計之特性及功能。
第十四條 低功率射頻電機之使用不得影響飛航安全及干擾合法通信；經發現有干擾現象時，應立即停用，並改善至無干擾時方得繼續使用。前項合法通信，指依電機法規作業之無線電通信。低功率射頻電機須忍受合法通信或工業、科學及醫療用電波輻射性電機設備之干擾。

5602-04C00-222

size: 420X297mm 70g书纸 先风琴再对折