

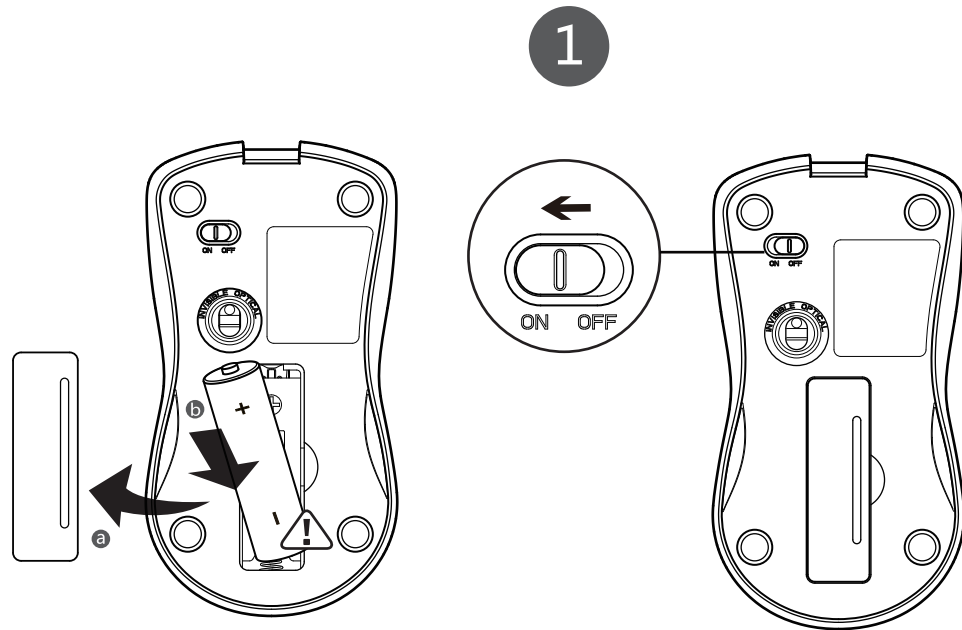
# 1010

Wireless Optical Mouse 雷柏無線光學滑鼠  
Quick Start Guide (V1.0)

03037  
2.4G Mini Receiver  
2.4G 迷你接收器

The ultimate Wireless

# RAPOO 雷柏

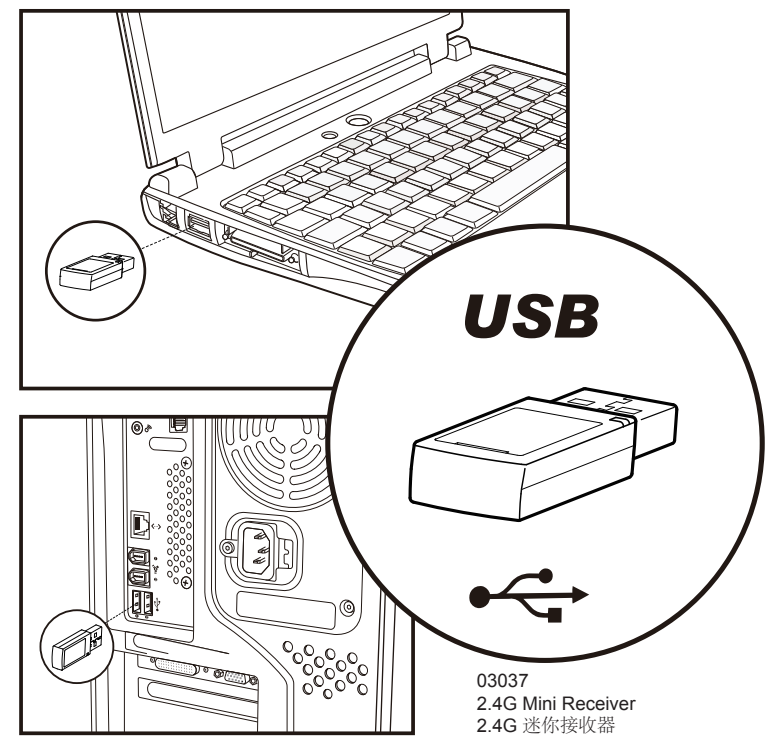


### Wireless Optical Mouse user guide:

1. Open the cover.  
打開電池蓋
2. Remove the cover and change the battery correctly, 1.5V AA\*1.  
取下電池蓋裝入電池，電池規格：1.5V AA\*1
3. Close the cover.  
蓋上電池蓋
4. Push the switch, power on.  
將電源開關撥至ON，打開電源

Frequency Range/載波頻率: 2402~2479 MHz  
Channel No./頻道數目: 16  
Modulation Type /調變技術: GFSK  
Data Rate/傳送速率: 1Mbps

## 2



2.4G Mini Receiver user guide  
1. Plug the Mini Receiver into a USB port of your computer.  
2. Turn on the Wireless Optical Mouse.  
3. Move the Wireless Optical Mouse to get connected with the Mini Receiver.

將接收器連接至電腦的USB介面，接收器將自動匹配鍵盤  
Plug the receiver into the usb port. The receiver will match the keyboard automatically.

### Troubleshooting

See [www.rapoo.com/faq](http://www.rapoo.com/faq) for latest FAQs, drivers and quick start guide. For extensive service, register at [www.rapoo.com/register](http://www.rapoo.com/register).

### Copyright

It is forbidden to reproduce any part of this quick start guide without the permission of Rapoo Technology Co., Ltd.

### Safety instructions

Do not open or repair this device. Do not use the device in a damp environment. Clean the device with a dry cloth.

### Warranty

The device is provided with one-year limited hardware warranty from the purchase day. Please see [www.rapoo.com/warranty](http://www.rapoo.com/warranty) for more information.

### 故障分析

請到 [www.rapoo.com/X1800/faq](http://www.rapoo.com/X1800/faq) 查詢最新常見問題。請到 [www.rapoo.com/X1800/download](http://www.rapoo.com/X1800/download) 下載最新的驅動和快速安裝指南。如需延長服務，請到 [www.rapoo.com/register](http://www.rapoo.com/register) 註冊。

### 智慧財產權資訊

未經雷柏的許可，禁止複製本快速安裝指南的內容。

### 安全提醒

請不要打開或修理該設備。不要在潮濕的環境使用該設備。用幹布擦拭該設備。

### 문제 해결

최근 미국의 소리는 이전 곳, 드라이버 및 맥 스타트 가이드에 대한 [www.rapoo.com/X1800/faq](http://www.rapoo.com/X1800/faq) 를 참조하십시오. 광범위한 서비스를 위해, 에 등록 [www.rapoo.com/register](http://www.rapoo.com/register) 하십시오.

### 저작권

이 간편 시작 설명서의 어떤 부분도 Rapoo Technology Co., Ltd. 의 허가 없이 복제될 수 없습니다.

### 안전 지침

이 장치를 열거나 수리하지 마십시오. 장치를 습한 환경에서 사용하지 마십시오. 장치를 마른 걸레로 닦으십시오.

### 보증

이 장치에는 구매일로부터 1년간의 유한 하드웨어 보증이 제공됩니다. 자세한 내용은 [www.rapoo.com/warranty](http://www.rapoo.com/warranty) 를 참조하십시오.

保修期限	日期	維修情況
購買日期		
購買地點		
產品序列號		
商品編號		
蓋章		

备注：請在各項填寫清楚，請勿擅自塗改，并妥善保管好本保修服務卡，以備維護的合法權益。如服務卡有任何疑問，請洽當地的經銷商或與我們聯繫。

M/N:   
Rating:   
Approval No:   
CMBT ID:   
M/N:   
Rating:   
Approval No:   
CMBT ID:



### 授權

在保質期內，您享有以下售後權利：(1) 7天內出現質量問題，根據國家“三包”規定於產品外觀與包裝完整的情況下，將產品退還給購買地點或雷柏指定地點，與購買的有效憑證，退回您所支付的產品款項。(2) 60天內出現產品質量問題，您可以到購買地點或雷柏指定地點更換硬件產品，或者到雷柏指定的維修網點維修。更換之後的硬件保質期為原保質期的剩餘天數。(3) 1年內出現產品質量問題，您可以到雷柏指定的維修網點維修。(4) 凡購買N系列產品的客戶，1年內產品出現質量問題，您可以到雷柏經銷商處更換新品。

### 保質限制

本有限保質不涵蓋由於以下原因導致的問題或損壞：(1) 意外事件、誤用、操作不當或任何未授權的維修、改裝或拆卸；(2) 操作或維護不當，適用過程中違反產品說明或連接到不適當的電壓源；(3) 或者適用非由雷柏提供的消耗品（如備用電池），但適用法律禁止此類限制的情況除外。

Country (or area)	Information	Description
Hongkong	Company name Address Tel#	Vin Yield Company 香港九龍管理樓東東街20號德生工業大廈2字樓全層 852-31522769
Malaysia	Company name Address Tel#	AV FUTURE LINK SDN BHD NO.25A, JALAN 5/152, TAMAN PERINDUSTRIAN OUG PUCHONG, 56200 KUALA LUMPUR, MALAYSIA (+606)377830011
Viet Nam	Tên công ty Địa chỉ Điện thoại	CÔNG TY CỔ PHẦN KỸ THUẬT CÔNG NGHỆ NAM THÀNH Số 7, Ngõ 14A, Khu 05 thị trấn Trung Yên, Đường Trưng Hoà, quận Cầu Giấy, Hà Nội, Việt Nam 0084-4-37534530
臺灣	公司名稱 地址 電話	雷柏電子有限公司7號13樓 新北市汐止區新台五路一段 02 2698 1965
中國大陸	公司名稱 地址 電話	深圳雷柏電子有限公司 深圳市福田区华强北中心44號333室 4008 887 778

### NCC警告

根據低功率電波輻射性電機管理辦法規定：  
第十二條  
經型式認證合格之低功率射頻電機，非經許可，公司、商號或使用者均不得擅自變更頻率、加大功率或變更原設計之特性及功能。  
第十四條  
低功率射頻電機之使用不得影響飛航安全及干擾合法通信；經發現有干擾現象時，應立即停用，並改善至無干擾時方得繼續使用。  
第七條  
除應符合上述規定外，低功率射頻電機應符合合法通信或工業、科學及醫療用電波輻射性電機設備之干擾。

### FCC Statement

This equipment has been tested and found to comply with the limits for a Class B digital device, pursuant to part 15 of the FCC rules. These limits are designed to provide reasonable protection against harmful interference in a residential installation. This equipment generates, uses and can radiate radio frequency energy and, if not installed and used in accordance with the instructions, may cause harmful interference to radio communications. However, there is no guarantee that interference will not occur in a particular installation. If this equipment does cause harmful interference to radio or television reception, which can be determined by turning the equipment off and on, the user is encouraged to try to correct the interference by one or more of the following measures:

- Reorient or relocate the receiving antenna.
- Increase the separation between the equipment and receiver.
- Connect the equipment into an outlet on a circuit different from that to which the receiver is connected.
- Consult the dealer or an experienced radio/TV technician for help.

To assure continued compliance, any changes or modifications not expressly approved by the party responsible for compliance could void the user's authority to operate this equipment. (Example- use only shielded interface cables when connecting to computer or peripheral devices).

This equipment complies with Part 15 of FCC RF Rules. Operation is subject to the following two conditions:

- 1) This device may not cause interference and
- 2) This device must accept any interference, including interference that may cause undesired operation of the device.

### Caution!

The manufacturer is not responsible for any radio or TV interference caused by unauthorized modifications to this equipment. Such modifications could void the user authority to operate the equipment.

### Canada Statement

This device complies with Industry Canada licence-exempt RSS standard(s). Operation is subject to the following two conditions: (1) this device may not cause interference, and (2) this device must accept any interference, including interference that may cause undesired operation of the device.

Le présent appareil est conforme aux CNR d'Industrie Canada applicables aux appareils radio exempts de licence. L'exploitation est autorisée aux deux conditions suivantes : (1) l'appareil ne doit pas produire de brouillage, et (2) l'utilisateur de l'appareil doit accepter tout brouillage radioélectrique subi, même si le brouillage est susceptible d'en compromettre le fonctionnement.

size:W297mm X H455mm 80g书纸 先风琴再对折