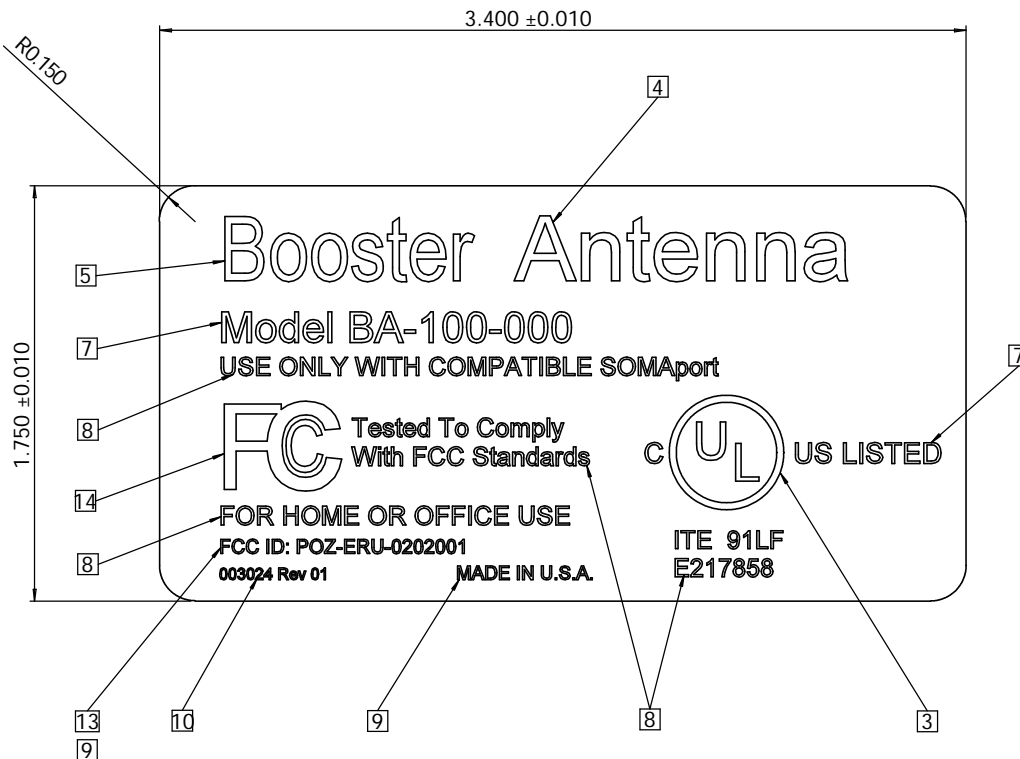


THE INFORMATION CONTAINED IN THIS DRAWING IS THE SOLE PROPERTY OF SOMA NETWORKS. ANY REPRODUCTION IN PART OR WHOLE WITHOUT THE WRITTEN PERMISSION OF SOMA NETWORKS IS PROHIBITED.

REVISIONS				
INCORP.	REV.	DESCRIPTION	DATE	APPROVED
-	01	INITIAL RELEASE PER ECO-01221	SEE ECO	SEE ECO



DRAWING SCALE 2:1

- MARK VENDOR NAME, LABEL DESIGNATION, AND SOMA NETWORKS PART NUMBER ON EACH SHEET OF LABELS.
- BACKGROUND TO BE DARK GRAY (PANTONE COLOR 432C) LETTERING AND GRAPHICS TO BE SILVER.
- REFER TO APPROPRIATE AGENCY LISTING MARK INFORMATION TO REPLACE REFERENCE SYMBOLS WITH APPROPRIATE REGISTERED MARKS.
- FONT: ARIAL 28 POINT
- FONT: ARIAL NARROW 28 POINT
- FONT: ARIAL 13 POINT
- FONT: ARIAL 9 POINT
- FONT: ARIAL 8 POINT
- FONT: ARIAL 6 POINT
- FONT: ARIAL 5 POINT
- LABEL CONSTRUCTION TO CONSIST OF A 0.010" THICK POLYCARBONATE LABEL STOCK WITH A 0.002" THICK 3M #467 PRESSURE SENSITIVE ADHESIVE. LABEL MUST BE A COMPONENT MARKING AND LABELING SYSTEM APPROVED BY UL AND CSA FOR THE FOLLOWING CONDITIONS:
 - OUTDOOR
 - TEMPERATURE RANGE: -40C TO +55C WHEN AFFIXED TO GE CYCOLOY C6200 (PC/ABS BLEND)
- APPROVED SOURCES OF SUPPLY: BAY AREA LABELS
- PRINT "PENDING FCC APPROVAL" AT NOTED LOCATION.
- PLACE FCC LOGO (FCCBLM.GIF) IN NOTED LOCATION.

ITEM NO.	PART OR IDENTIFYING NO.	NOMENCLATURE OR DESCRIPTION	MATERIAL SPECIFICATION	QTY REQD.
PARTS LIST				
UNLESS OTHERWISE SPECIFIED DIMENSIONS ARE IN INCHES TOLERANCES ARE: FRACTIONS DECIMALS ANGLES ± .XX ± .XX +.1 XXX ± .XXX		CAD GENERATED DRAWING. DO NOT MANUALLY UPDATE		
MATERIAL		APPROVALS	DATE	
FINISH		DRAWN	Minden	04/16/2002
NEXT ASSY USED ON		CHECKED		
APPLICATION		RESP ENG	Minden	04/16/2002
DO NOT SCALE DRAWING		MFG ENG		
		DUAL ENG		
SOMA NETWORKS			LABEL, REGULATORY, U.S.A., ERU, PCS.	
SIZE DWG. NO. 003024			REV 01	
SCALE 2:1 CAD FILE			SHEET 1 OF 1	

