

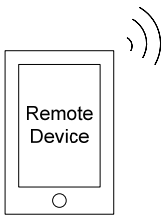
In accordance with FCC Part 15C, this module is listed as a Modular Transmitter device.

Changes or modifications not expressly approved by the manufacturer could void the user's authority to operate the equipment.

The antenna of this transmitter must not be co-located or operating in conjunction with any other antenna or transmitters within a host device, except in accordance with FCC multi-transmitter product procedures.

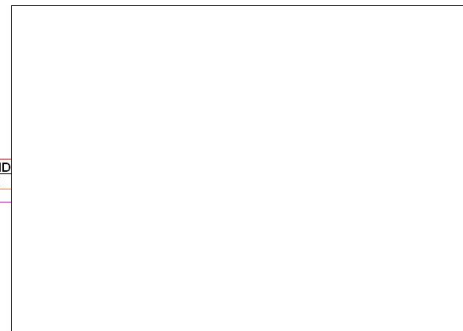
FCC Label Instructions

The outside of final products that contains this module device must display a label referring to the enclosed module. This exterior label can use wording such as the following: "Contains Transmitter Module FCC ID: [POV12BTM001]" or "Contains FCC ID: [POV12BTM001]." Any similar wording that expresses the same meaning may be used.



BTM

5V	5V
GND	GND
TX	RX
RX	TX



CONSOLE

The BTM has four lines are connected to the console:

1. 5V (power cord) : 5 volt supply by console.
2. GND (ground) : is connected to the console ground.
3. TX (signal transmission line) : is connected to the receiving end of the console.
4. RX (signal reception line) : is connected to the transmission side of the console.

BTM Character

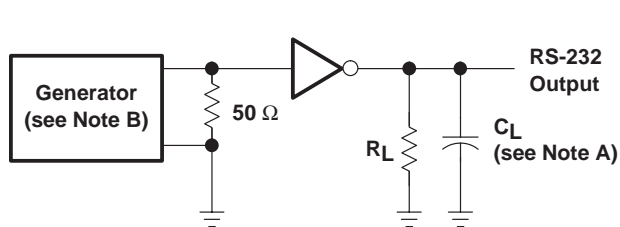
- Vcc : 5V
- Input Operating Voltage Range : 4.3V ~ 6.0V
- Current consumption : 100 mA
- Operating Junction Temperature : - 10 ~ 70 °C
- SIZE : 50 + 0.5 (L) * 50 + 0.5 (W) * 9.2 + 0.3 (H) mm
- ESD protection on all pins (HBM;MM): ≥ 4 kV; ≥ 400V

RS232 Interface

- RS-232 Bus-Pin ESD Protection Exceeds ±15 kV Using Human-Body Model (HBM)
- Meets or Exceeds the Requirements of TIA/EIA-232-F and ITU v.28 Standards
- Input voltage range, VI: Drivers: -0.3 V to 6 V
- Receivers : -25 V to 25 V
- Output voltage range, VO: Drivers: -13.2 V to 13.2 V
- Receivers: -0.3 V to VCC + 0.3 V
- Note: VOH ≥ + 3V , VOL ≤ - 3V

I _{IH}	High-level input current	V _I = V _{CC}	±0.01	±1	μA
I _{IL}	Low-level input current	V _I at GND	±0.01	±1	μA

PARAMETER MEASUREMENT INFORMATION



$$SR(tr) = \frac{6 \text{ V}}{t \text{ or } t}$$

