

AP-201 Wireless Internet Access Point User's Manual

Inventec @ppliances Corp.

IMPORTANT

This document contains important Information, please read it carefully before using this product.

Copyright Inventec @ppliances Corp. 2002

Revision: 0.1

AP-201 Wireless Internet Access Point User's Manual

Date:02/08/2002

Revision History

Date	By	Revision	Comments
02/08/2002		Draft	Initial Draft
			1.

AP-201 Wireless Internet Access Point User's Manual

Date:02/08/2002



1. Introduction

Thank you for purchasing your AP-201 11Mbps Wireless LAN Access Point. This manual will assist you with the installation procedure for AP-201.

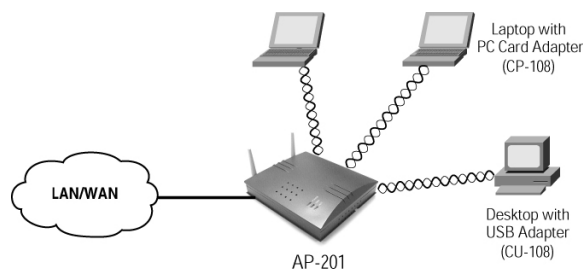
The package you have received should contain the following items:

- User manual
- Access Point
- Power adapter
- RJ45 cable
- Wall hanging base

Note: if anything is missing, please contact your vendor

A wireless LAN is normally used in a predefined environment. In such a network, Access Points are mounted at assigned places, each covering its own area in which wireless nodes can operate. These Access Points are connected to a wired network to communicate with each other and with servers and clients on that network.

The AP-201 Access Point can be connected to a 10/100 Mbps Ethernet network through a RJ45 (UTP) connector.



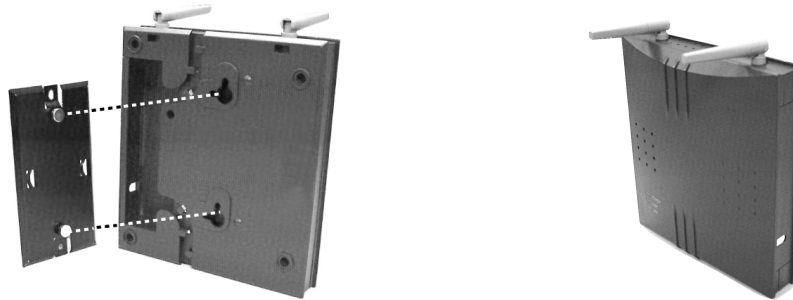
AP-201 Wireless Internet Access Point User's Manual

Date:02/08/2002

2. Hardware Installation

Place the AP-201

To place the AP-201 on the desktop or setup the metal base on the wall to hang the Ap-201. Make sure the antennas are in a vertical position (if not, rotate over 90 degrees).

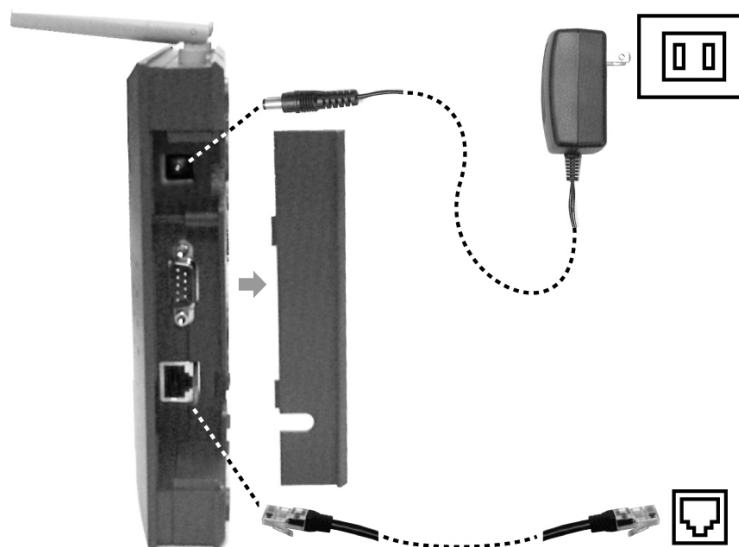


Connecting the AC Adapter

1. To remove the cover on the right side of AP-201.
2. Connect the power cord to an electrical outlet.
3. Plug the AC adapter power cable into the DC-IN jack on the right side of AP-201.
4. When the AC adapter is connected to AC power, the **POWER** LED will be on.

Connecting the RJ45 Cable

1. Connect RJ45 cable to an wall outlet.
2. Plug another side into the RJ45 jack on the right side of AP-201
3. When the RJ45 cable is connected, the **LINK** LED will be on.

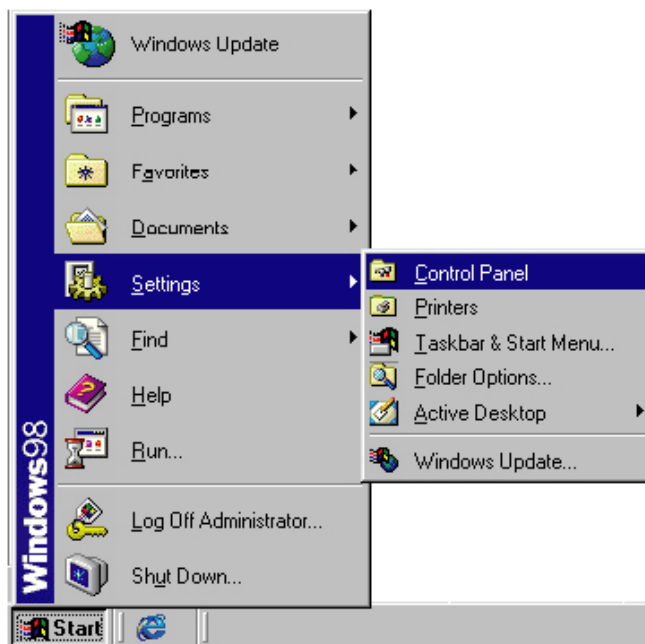


3. Configuring Your Computer

Configure TCP/IP Settings

After you have completed the hardware setup by connecting your devices, you need to configure your computer to connect to your AP-201 Access Point. You need to determine how your ISP issues your IP address. Many ISPs issue these numbers automatically using a networking technology known as Dynamic Host Control Protocol, or DHCP. Other ISPs will specify your IP address and associated numbers, which you must enter manually. This is also known as a static IP address. How your ISP assigns your IP address determines how you will configure your computer.

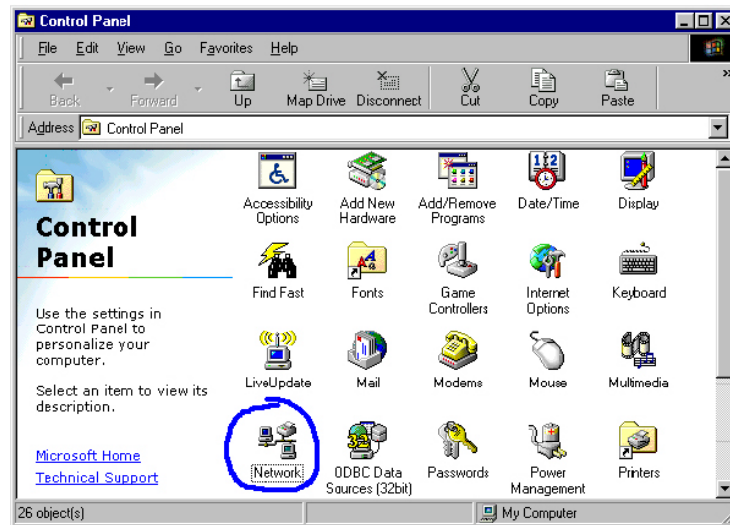
1. From the Windows desktop, click the "Start," button. Choose "Settings," then click "Control Panel."



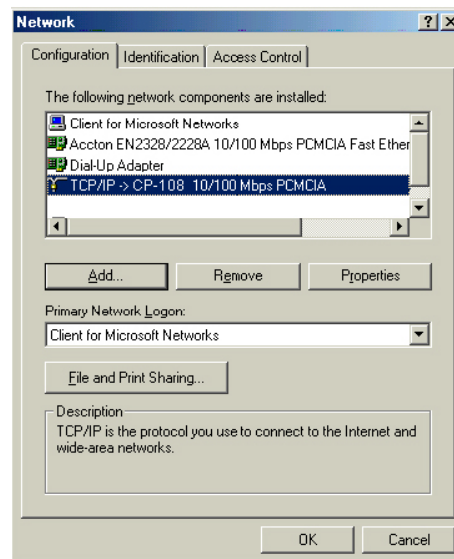
AP-201 Wireless Internet Access Point User's Manual

Date:02/08/2002

- From "Control Panel," double-click the "**Network**" icon.



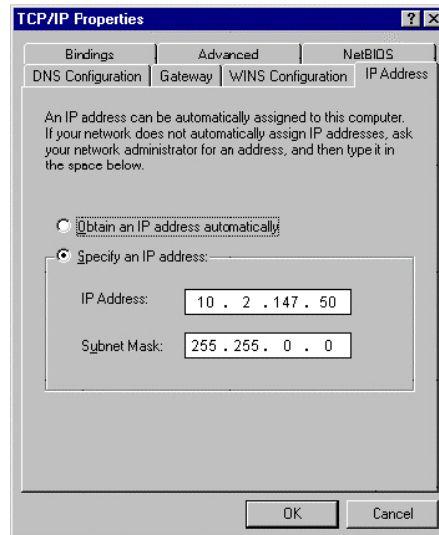
- In the "Network" window, under the "**Configuration**" tab, double-click the "**TCP/IP**" entry that is listed with your network card.



AP-201 Wireless Internet Access Point User's Manual

Date:02/08/2002

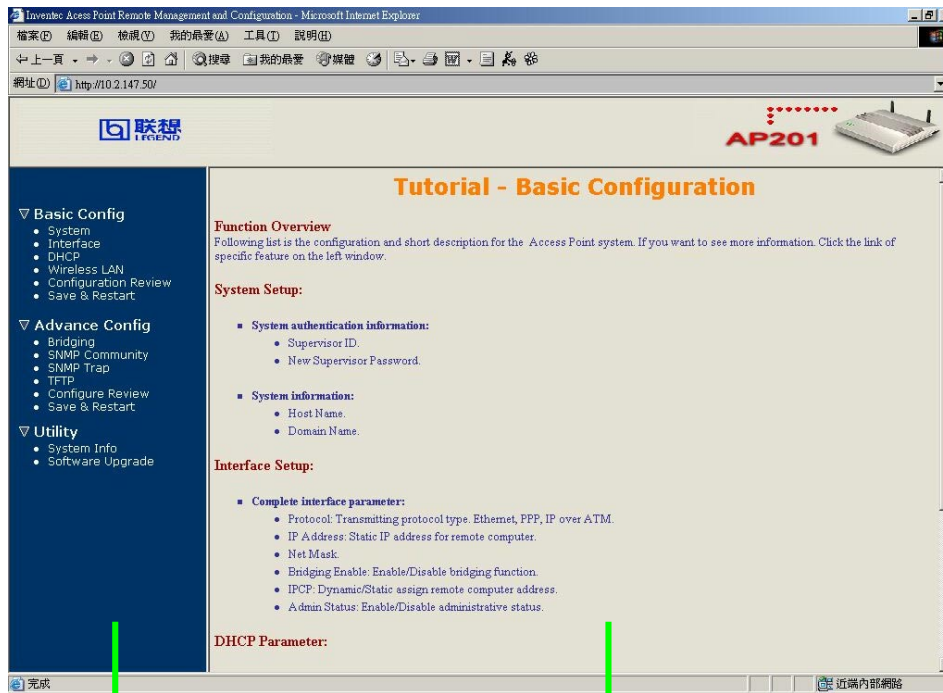
4. Select the "IP Address" tab. Verify that your IP Address is 10.2.147.50, your Subnet Mask is 255.255.0.0 and click OK.



5. In the "Command Prompt" windows, type "c:\>ping 10.150.35.00
6. Return Windows Operating System. Run "Internet Explorer" and type address <http://10.150.35.200>. If success connecting, there will jump a identifying window to ask your User's ID and Password. Key in the correct ID and Password and click OK to enter the AP-201 Manager.
* The default is "ID:root, Password:root."

4. AP Manger Interface

Parameter



Select Area

Setting Area

Press “Basic configuration”、 “Advance configuration” or “Utility” to see the detail setting selection.

AP-201 Wireless Internet Access Point User's Manual

Date:02/08/2002

1. Basic configuration

1.1 System Setup

Basic Configuration - System Setup

Please Fill-in The Following System Information:

- **System Authentication Information:**

Supervisor ID:	root
Supervisor Password:	****
Password Confirm:	****
- **Administration Information:**

Host Name:	HWLAN
Domain Name:	iac.com.tw

1.2 Interface Parameter

Basic Configuration - Interface Parameter

Config Following Interface Parameter.
Select an index from the table below to modify specific item, then click 'Finish' button to set the configuration value.

- **Table of current interface parameter:**

No	1	2
Status	Active	Active
Protocol	HWLAN	Ethernet
IP address	192.168.1.1	140.92.61.153
Net Mask	255.255.255.0	255.255.255.0
Bridging	Join	Join

AP-201 Wireless Internet Access Point User's Manual

Date:02/08/2002

1.3 HHCP Parameter

Basic Configuration - DHCP Parameter

Config Following DHCP Parameter.

- DHCP client setting:

Interface:	Disable ▾
------------	-----------

1.4 Wireless LAN

Basic Configuration - Wireless LAN

Wireless LAN information.

- Wireless LAN Configuration:

Channel:	3
rts Threshold:	2346
frag Threshold:	800
Basic rates:	15
SSID:	default
Station Name:	IAC-AP201
WEP:	<input type="radio"/> Enable <input checked="" type="radio"/> Disable
Default Key:	2 ▾
Key1:	01 01 01 01 01
Key2:	02 02 02 02 02
Key3:	03 03 03 03 03
Key4:	04 04 04 04 04

1.5 Config Review

On the page of Config Review, you can browse all the configurations of Basic Config, and you can press the item to modify it.

1.6 Save & Restart

If you modify any setting, please press the **“Save”** button to save it, and Press the **“Restart”** button to make your new setting take effect.

AP-201 Wireless Internet Access Point User's Manual

Date:02/08/2002

2. Advance Configuration

2.1 Bridging Parameter

Generic Parameter

Generic Parameters.

- General parameter of all interface bridge function:

Spanning Tree:	<input checked="" type="radio"/> Disable <input type="radio"/> Enable
IP Address:	10.2.147.50
Subnet Mask:	255.255.0.0

STP Parameter

Spanning Tree Protocol Parameters.

Change the spanning tree protocol parameters and click 'Finish' button to submit them.

- Bridge & port parameter:

Bridge priority (0 - 65535):	32768
Port1 Priority (0 - 255):	128
Port2 Priority (0 - 255):	128

Static bridge Parameter

Static Bridge Parameters.

Click 'Delete' or 'Modify' button to delete or modify static bridge entry. Input new static bridge and click 'Add' button to add entry. Click 'Finish' button to return to previous page.

- Table of current MAC entries:

Amount of usable static entry: 1

No	MAC Address	Interface
		1 - 2
<input checked="" type="radio"/> 1	00:00:00:00:00:00	1.Filter 2.Filter

AP-201 Wireless Internet Access Point User's Manual

Date:02/08/2002

2.2 SNMP Community Parameter

Advance Configuration - SNMP Community Parameter

Config Following Community Parameter.

Select one community index from the table below to modify specific item. Or click 'Finish' button to return to previous page.

Table of current community pool:

Index	Validaty	Access Right	Community
<input checked="" type="radio"/> 1	Enable	Read	public
<input type="radio"/> 2	Enable	Write	private
<input type="radio"/> 3	Disable	---	---
<input type="radio"/> 4	Disable	---	---
<input type="radio"/> 5	Disable	---	---

2.3 SNMP Trap Parameter

Advance Configuration - SNMP Trap Parameter

Config Following Trap Host Parameter.

Select one trap host index from the table below to modify specific item. Or click 'Finish' button to return to previous page.

Table of current trap host pool:

Index	Version	IP Address	Community
<input checked="" type="radio"/> 1	Version 1	140.92.61.208	public
<input type="radio"/> 2	Version 2	140.92.61.208	public
<input type="radio"/> 3	Disable	---	---
<input type="radio"/> 4	Disable	---	---
<input type="radio"/> 5	Disable	---	---

2.4 TFTP Parameter

Advanced Configuration - TFTP Parameter

Please Fill in The Following Information:

Default TFTP Parameters:

TFTP Server IP:	<input type="text" value="10.150.19.45"/>
TFTP Filename:	<input type="text" value="SOHO.BIN"/>

AP-201 Wireless Internet Access Point User's Manual

Date:02/08/2002

3. Utility**3.1 System Information**

Utility - General System Information

General System Information.

Product Model:	HWLAN 2001
Software Version:	HWLAN 1.00
Build:	
CPU:	Samsung NETARM 4510
RAM:	4MB
Flash:	2MB
Chipset:	INTERSIL PRISM2 WLAN
Firmware Version:	
Host Name:	HWLAN
Domain Name:	iac.com.tw

You can check this System Information page for some H/W specific

3.2 Software Upgrade

Utility - Software Upgrade

Please Fill in The Following Software Upgrade Information:

- **Upgrade Mode & TFTP Parameters:**

Upgrade Mode:	Program Image
TFTP Server IP Address:	10.150.19.45
Upgrade Filename:	SOHO.BIN

The AP manager program can be upgraded. This menu didn't include this part, Please reference the document of software upgrade.

5. Federal Communication Commission Interference Statement

This equipment has been tested and found to comply with the limits for a Class B digital device, pursuant to Part 15 of the FCC Rules. These limits are designed to provide reasonable protection against harmful interference in a residential installation. This equipment generates, uses and can radiate radio frequency energy and, if not installed and used in accordance with the instructions, may cause harmful interference to radio communications. However, there is no guarantee that interference will not occur in a particular installation. If this equipment does cause harmful interference to radio or television reception, which can be determined by turning the equipment off and on, the user is encouraged to try to correct the interference by one of the following measures:

- Reorient or relocate the receiving antenna.
- Increase the separation between the equipment and receiver.
- Connect the equipment into an outlet on a circuit different from that to which the receiver is connected.
- Consult the dealer or an experienced radio/TV technician for help.

FCC Caution: To assure continued compliance, (example - use only shielded interface cables when connecting to computer or peripheral devices) any changes or modifications not expressly approved by the party responsible for compliance could void the user's authority to operate this equipment.

This device complies with Part 15 of the FCC Rules. Operation is subject to the following two conditions: (1) This device may not cause harmful interference, and (2) this device must accept any interference received, including interference that may cause undesired operation.

IMPORTANT NOTE:

FCC Radiation Exposure Statement:

This equipment complies with FCC radiation exposure limits set forth for an uncontrolled environment. This equipment should be installed and operated with minimum distance 20cm between the radiator & your body.

This transmitter must not be co-located or operating in conjunction with any other antenna or transmitter.