

This document visualizes 3 examples of different Type Labels which are applied to the housing of the corresponding NB1601 variant. Identical Type Label is applied on carton packaging.

Order Code is defined as: **NB800-[Options]** e.g.

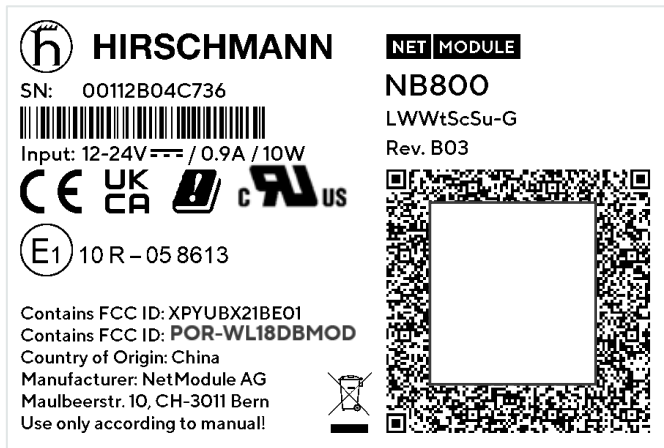
- **NB800-LWWtSc-G**
- **NB800-LSc**
- **NB800-R**

[Options] → Order Codes by functionality:

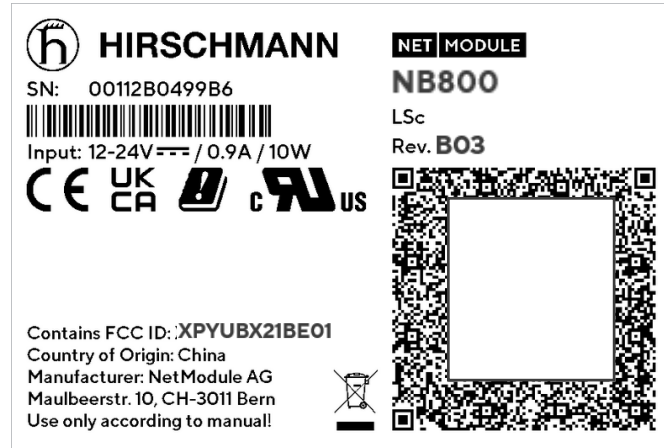
- L** Cellular Module "LTE Cat. 4"
- W** WLAN (combo module WLAN+BT)
- Wt** Bluetooth (combo module WLAN+BT)
- ScSu** Extension, COM_IO PCBA
- G** GNSS

XPYUBX21BE01

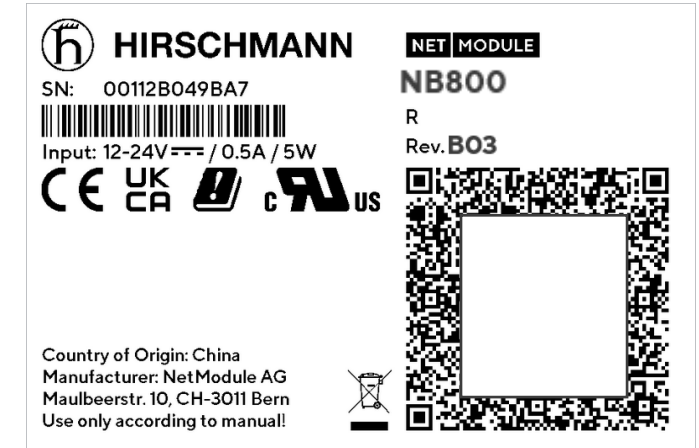
NB800-LWWtScSu-G (DUT, fully populated)
→ "LWWtScSu-G" populated



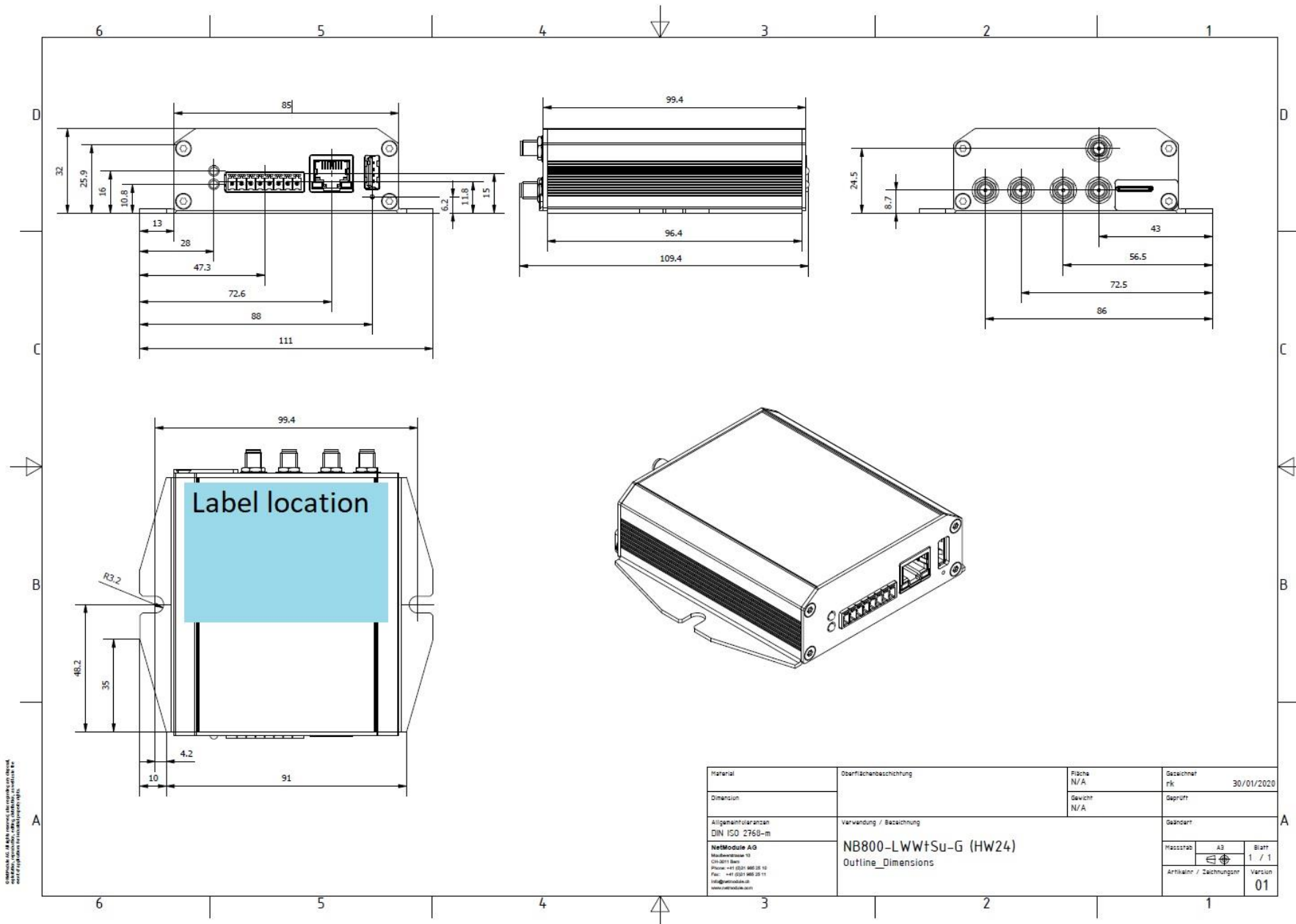
NB800-LScSu (depopulated DUT)
→ "LSuSc" LTE + COM_IO populated
→ "WWt" WLAN + BT depopulated
→ "G" GNSS depopulated



NB800-R (depopulated DUT)
→ No wireless modules populated
→ "WWt" WLAN + BT depopulated
→ "ScSu" COM_IO depopulated
→ "G" GNSS depopulated



Dimensions Label: 76 x 51 mm
Height Logos (CE, UKCA, cRUus): 5.08 mm



Copyright © 2020 NetModule AG. All rights reserved. This document is confidential and its content may be subject to change without notice.

Material	Oberflächenbeschichtung	Fläche N/A	Gezeichnet Rik	30/01/2020								
Dimension		Gewicht N/A	Geprüft									
Allgemeinreferenzen DIN ISO 2768-m	Verwendung / Bezeichnung	Geändert										
NetModule AG Hörsingstraße 10 CH-3011 Birmensdorf Phone: +41 (0)21 883 23 12 Fax: +41 (0)21 883 23 11 info@netmodule.ch www.netmodule.ch	NB800-LWW+Su-G (HW24) Outline_Dimensions	<table border="1"> <tr> <td>Maßstab</td> <td>A3</td> <td>Blatt</td> <td>1 / 1</td> </tr> <tr> <td>Artikelnr. / Zeichnungsnr.</td> <td></td> <td>Version</td> <td>01</td> </tr> </table>			Maßstab	A3	Blatt	1 / 1	Artikelnr. / Zeichnungsnr.		Version	01
Maßstab	A3	Blatt	1 / 1									
Artikelnr. / Zeichnungsnr.		Version	01									