

This document visualizes 3 examples of different Type Labels which are applied to the housing of the corresponding NB1601 variant. Identical Type Label is applied on carton packaging.

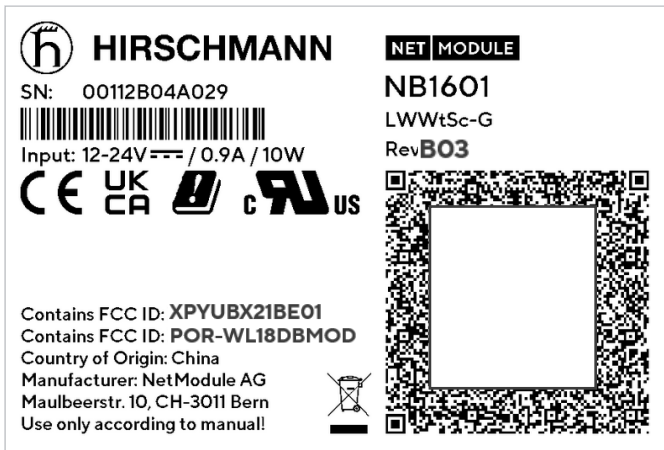
Order Code is defined as: **NB1601-[Options]** e.g.

- **NB1601-LWWtSc-G**
- **NB1601-LSc**
- **NB1601-R**

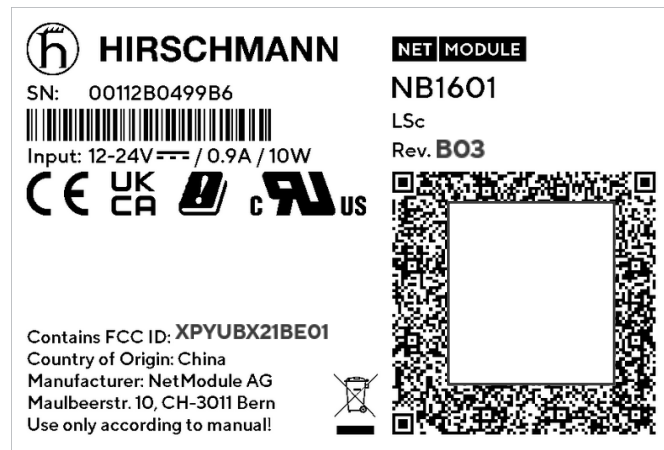
**[Options] → Order Codes by functionality:**

- L** Cellular Module "LTE Cat. 4"
- W** WLAN (combo module WLAN+BT)
- Wt** Bluetooth (combo module WLAN+BT)
- Sc** Extension, COM\_IO PCBA
- G** GNSS

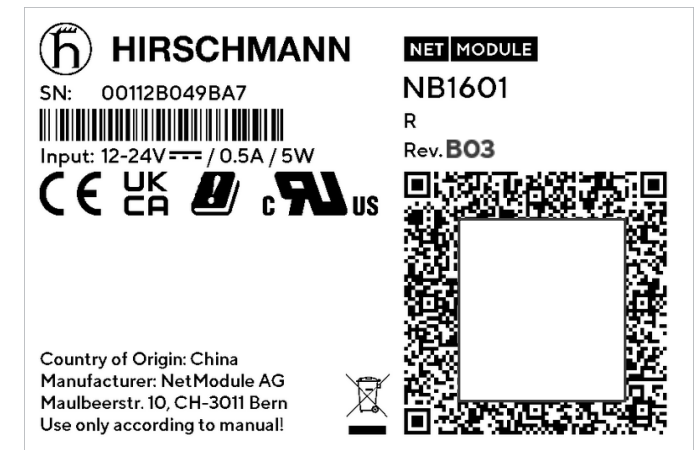
**NB1601-LWWtSc-G** (DUT, fully populated)  
→ "LWWtSc-G" populated



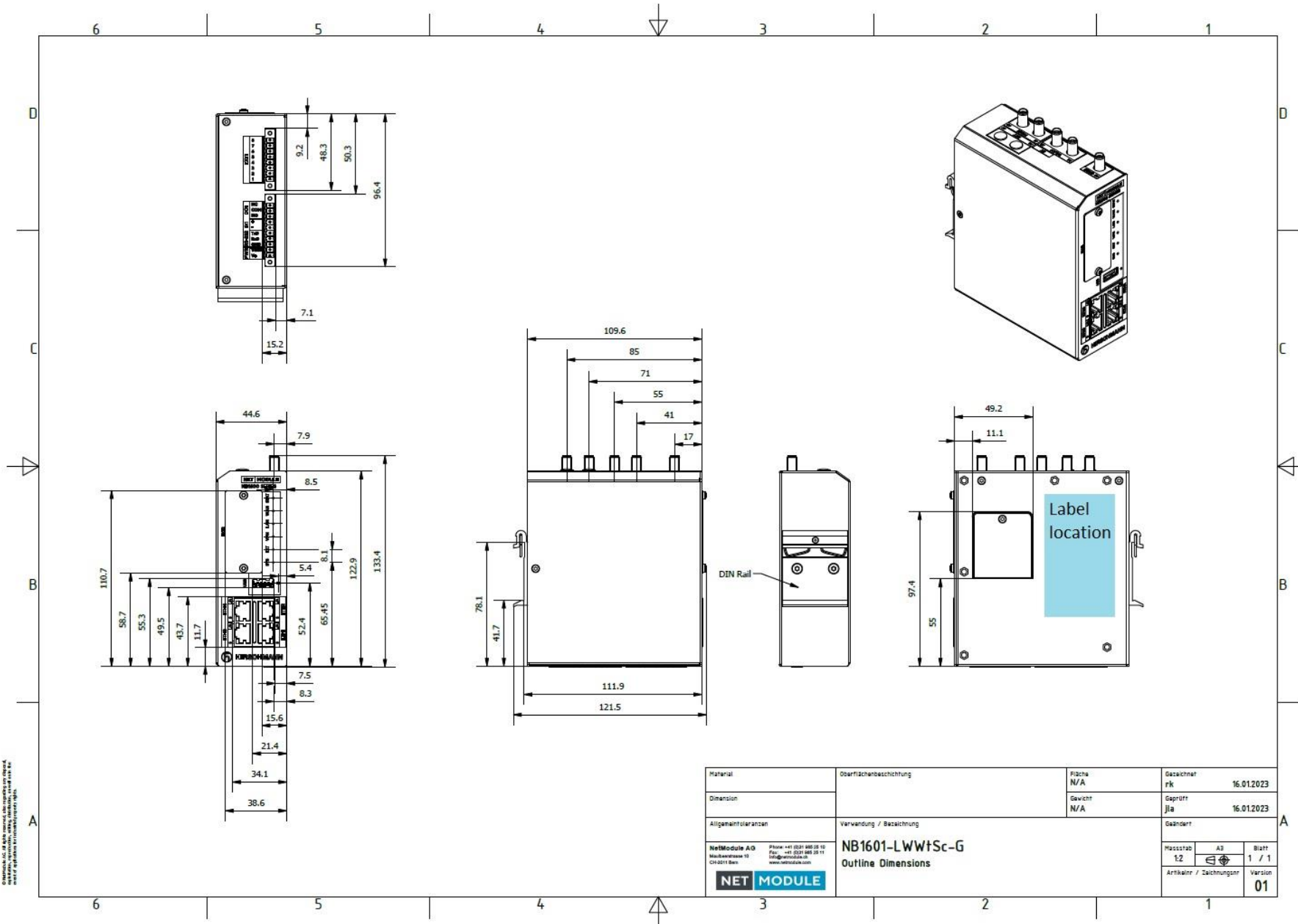
**NB1601-LSc** (depopulated DUT)  
→ "LSc" LTE + COM\_IO populated  
→ "WWt" WLAN + BT depopulated  
→ "G" GNSS depopulated



**NB1601-R** (depopulated DUT)  
→ No wireless modules populated  
→ "WWt" WLAN + BT depopulated  
→ "Sc" COM\_IO depopulated  
→ "G" GNSS depopulated



Dimensions Label: 76 x 51 mm  
Height Logos (CE, UKCA, cRUus): 5.08 mm



© NetModule AG. All rights reserved. This document is for internal use only. It is not to be distributed outside the company.