

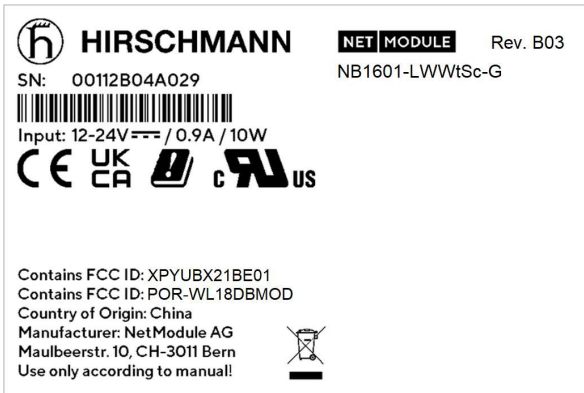
This document visualizes 3 examples of different Type Labels which are applied to the housing of the corresponding NB1601 variant. Identical Type Label is applied on carton packaging.

Order Code is defined as: **NB1601-[Options]** e.g.  
 - **NB1601-LWWtSc-G**  
 - **NB1601-LSc**  
 - **NB1601-R**

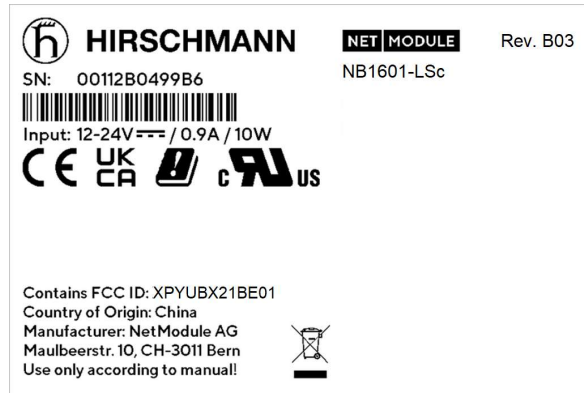
**[Options] → Order Codes by functionality:**

- L** Cellular Module "LTE Cat. 4"
- W** WLAN (combo module WLAN+BT)
- Wt** Bluetooth (combo module WLAN+BT)
- Sc** Extension, COM\_IO PCBA
- G** GNSS

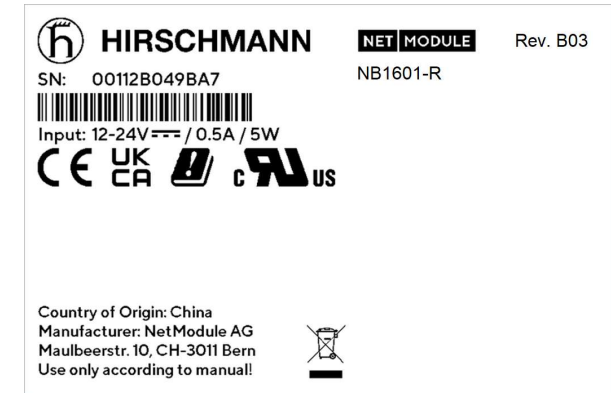
**NB1601-LWWtSc-G** (DUT, fully populated)  
 → "LWWtSc-G" populated



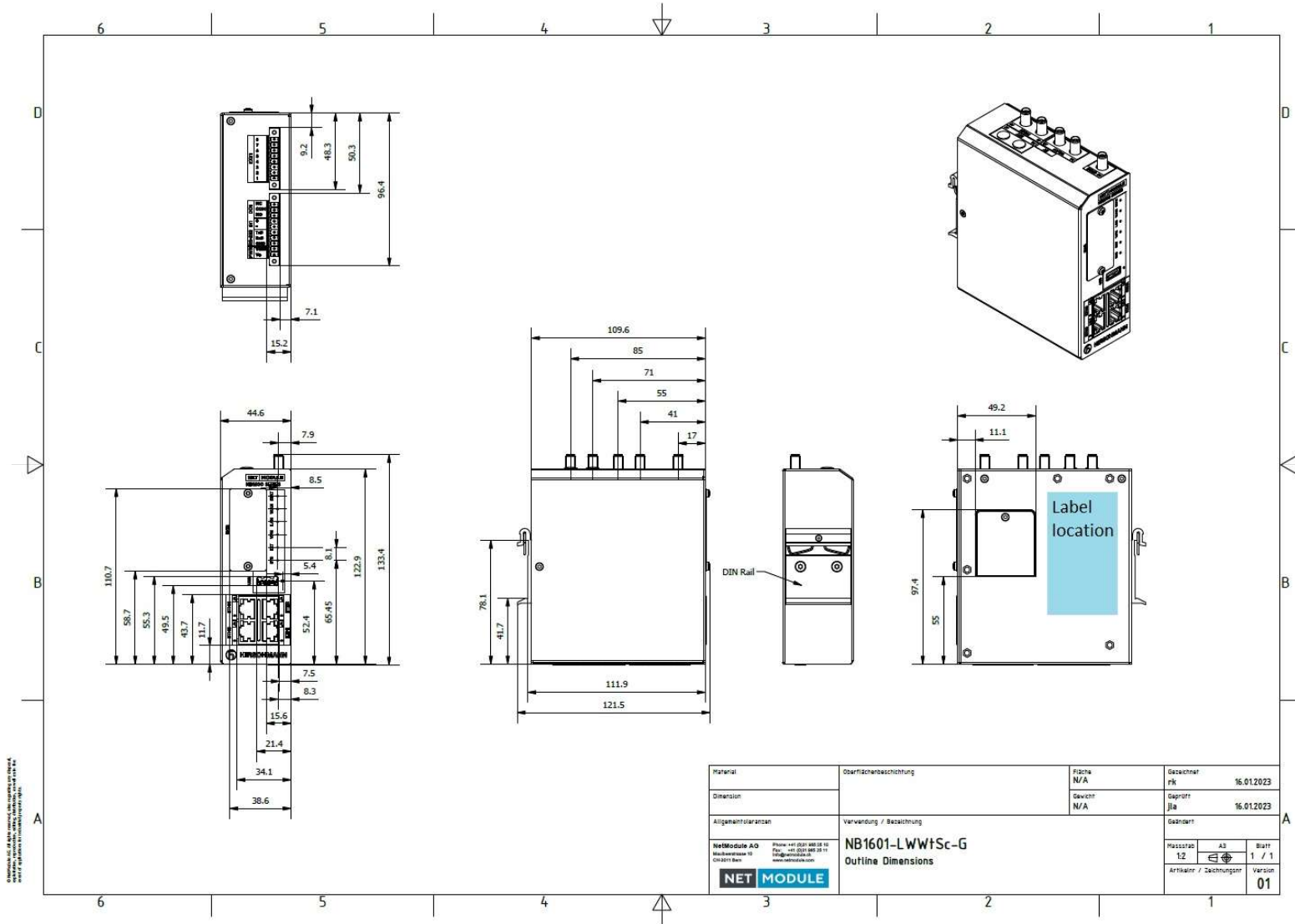
**NB1601-LSc** (depopulated DUT)  
 → "LSc" LTE + COM\_IO populated  
 → "WWt" WLAN + BT depopulated  
 → "G" GNSS depopulated



**NB1601-R** (depopulated DUT)  
 → No wireless modules populated  
 → "WWt" WLAN + BT depopulated  
 → "Sc" COM\_IO depopulated  
 → "G" GNSS depopulated



Dimensions Label: 76 x 51 mm  
 Height Logos (CE, UKCA, cRUus): 5.08 mm



TypeLabel\_NB1601\_FCC

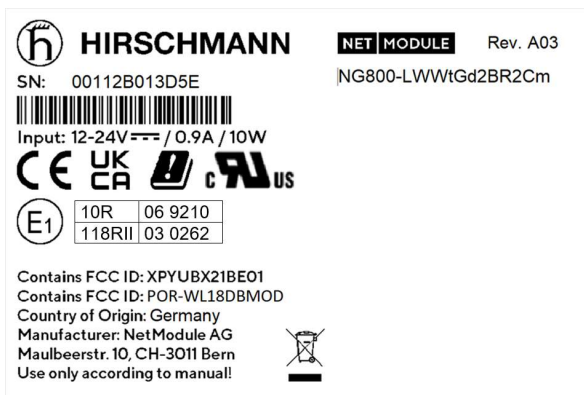
This document visualizes 3 examples of different Type Labels which are applied to the housing of the corresponding NB1601 variant. Identical Type Label is applied on carton packaging.

Order Code is defined as: **NG800-[Options]** e.g.  
- **NG800-LWWtSc-G**

**[Options] → Order Codes by functionality:**

- L** Cellular Module "LTE Cat. 4"
- W** WLAN (combo module WLAN+BT)
- Wt** Bluetooth (combo module WLAN+BT)
- Gd** GNSS
- 2Br** Extension,
- 2Cm** Extension, CAN

**NG800-LWWtGd2Br2Cm** (DUT, fully populated)  
→ "LWWtGd2Br2Cm" populated



Dimensions Label: 76 x 51 mm  
Height Logos (CE, UKCA, cRUus): 5.08 mm



TypeLabel\_NG800\_FCC

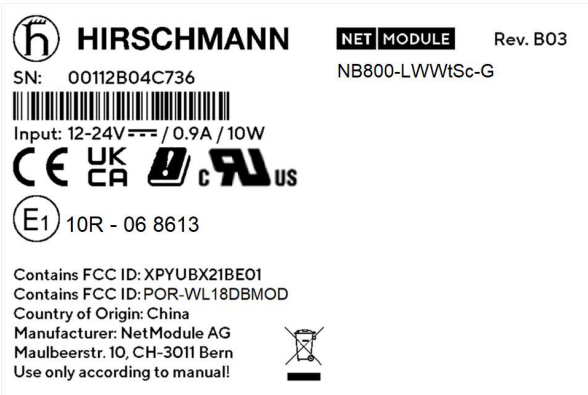
This document visualizes 3 examples of different Type Labels which are applied to the housing of the corresponding NB1601 variant. Identical Type Label is applied on carton packaging.

Order Code is defined as: **NB800-[Options]** e.g.  
 - **NB800-LWWtSc-G**  
 - **NB800-LSc**  
 - **NB800-R**

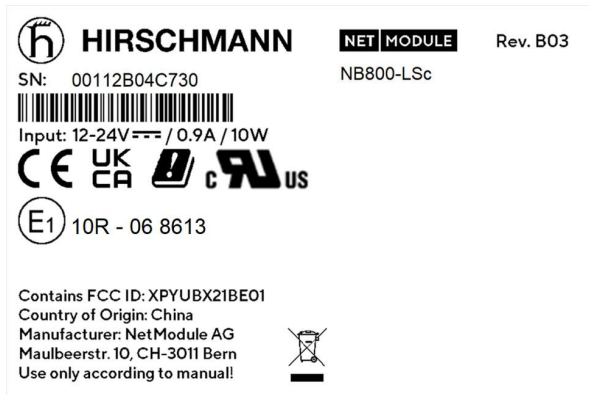
**[Options] → Order Codes by functionality:**

- L** Cellular Module "LTE Cat. 4"
- W** WLAN (combo module WLAN+BT)
- Wt** Bluetooth (combo module WLAN+BT)
- Sc** Extension, COM\_IO PCBA
- G** GNSS

**NB800-LWWtSc-G** (DUT, fully populated)  
 → "LWWtSc-G" populated



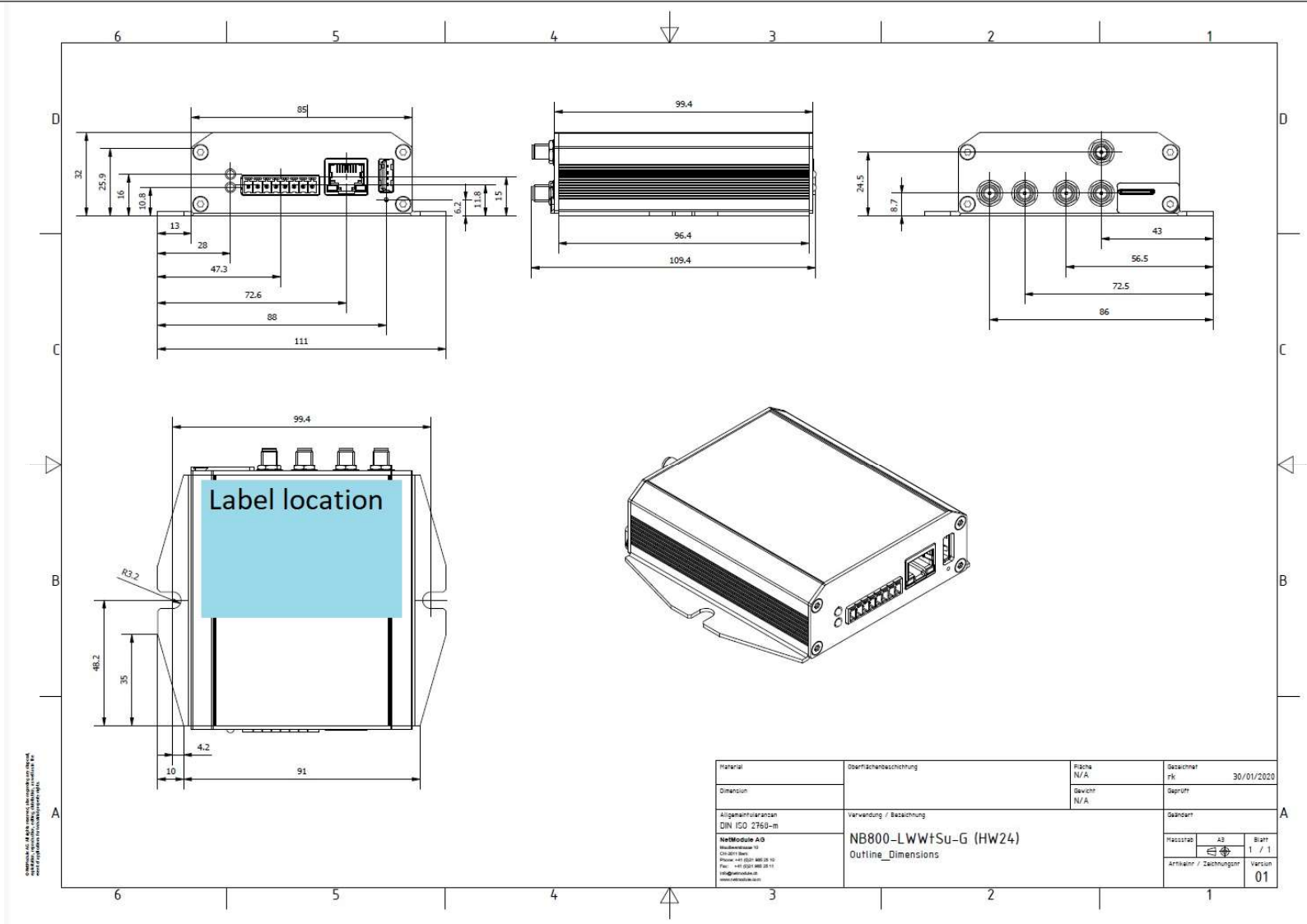
**NB800-LSc** (depopulated DUT)  
 → "LSc" LTE + COM\_IO populated  
 → "WWt" WLAN + BT depopulated  
 → "G" GNSS depopulated



**NB800-R** (depopulated DUT)  
 → No wireless modules populated  
 → "WWt" WLAN + BT depopulated  
 → "Sc" COM\_IO depopulated  
 → "G" GNSS depopulated



Dimensions Label: 76 x 51 mm  
 Height Logos (CE, UKCA, cRUus): 5.08 mm



Material	Oberflächenbeschichtung	Fische	Geschnitten
Dimension		N/A	PK 30/01/2020
Allgemeininformationen DIN ISO 2765-08	Verwendung / Bezeichnung	Seiten	Geprüft
NetModule AG Mühlackerstr. 10 D-63089 Heppenheim Phone: +49 (0)69 488 28 10 Fax: +49 (0)69 488 28 11 info@netmodule.de www.netmodule.de	NB800-LWw+Su-G (HW24) Outline_Dimensions	N/A	
			Geprüft
			Passiert
			Blatt
			1 / 1
			Artikelnr. / Zeichnungsnr.
			Version
			01

TypeLabel\_NB800\_FCC