



L155 Wireless Hearing Device – Internal Photos

10/27/2017



Figure 1: Shell disassembly

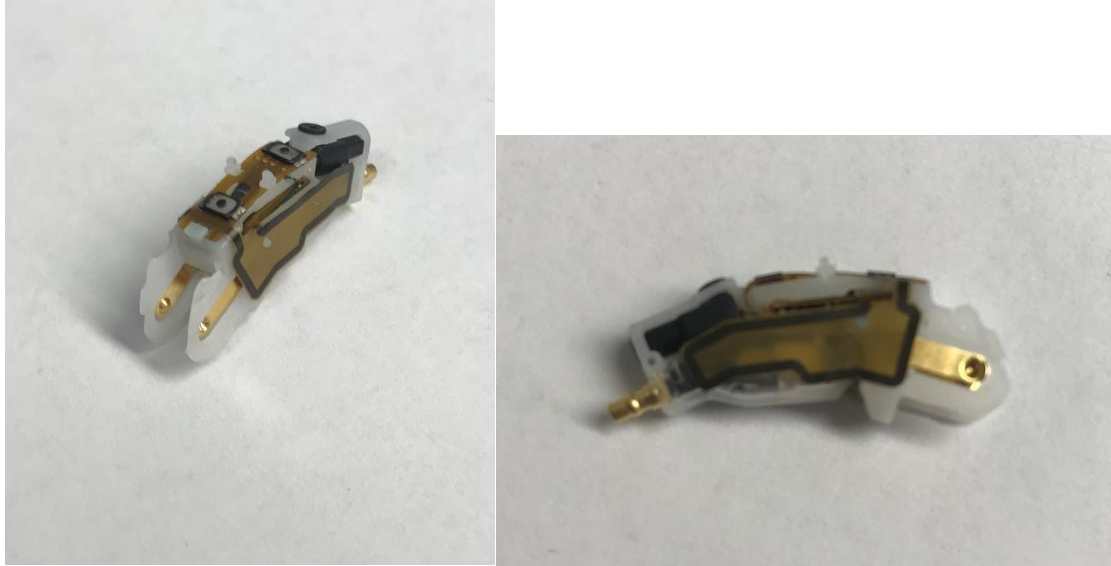


Figure 2: Chassis assembly with Antenna

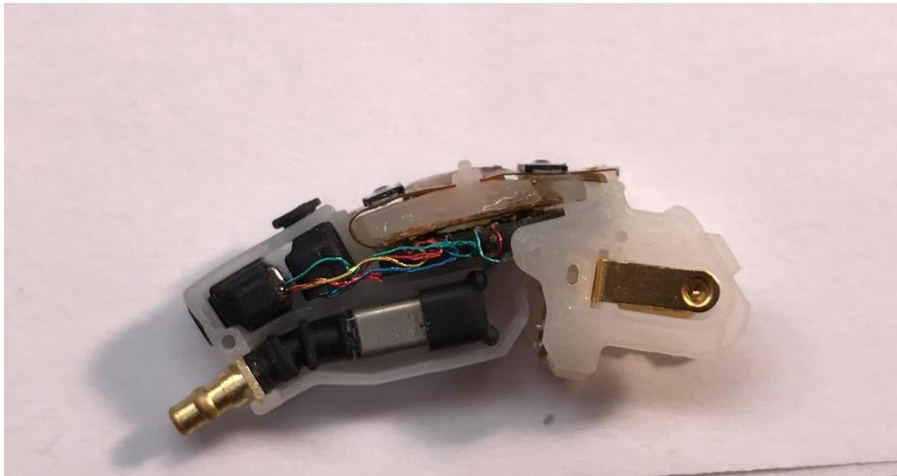


Figure 3: Chassis w/ Antenna Removed

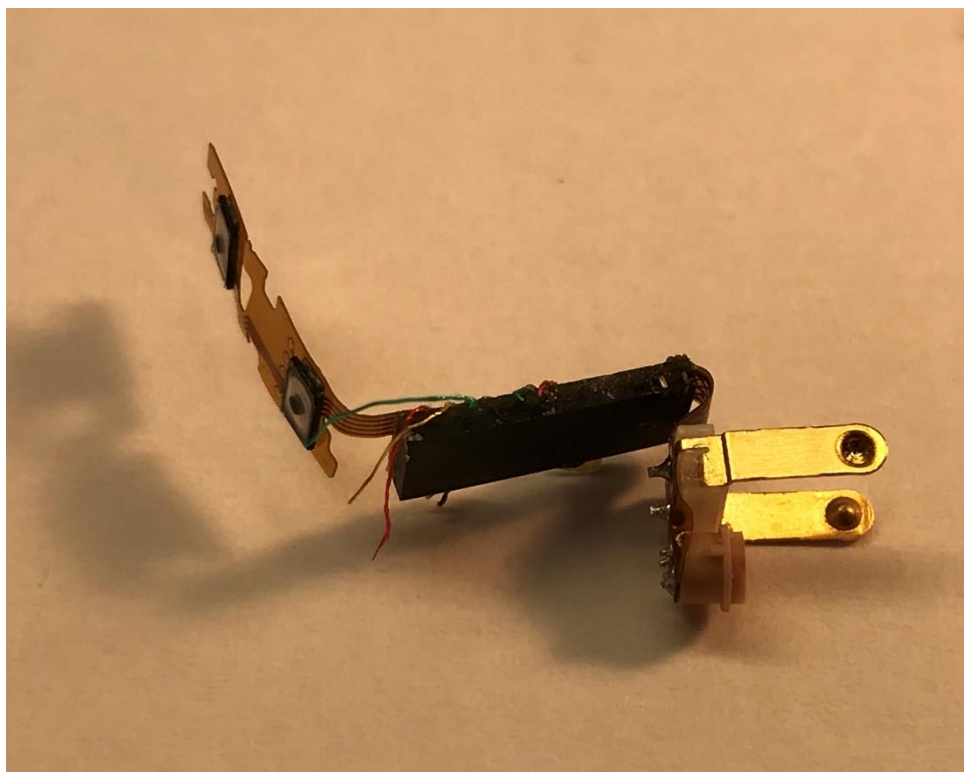


Figure 4: PL3 Hybrid on Flex, w/ battery contacts and pushbuttons

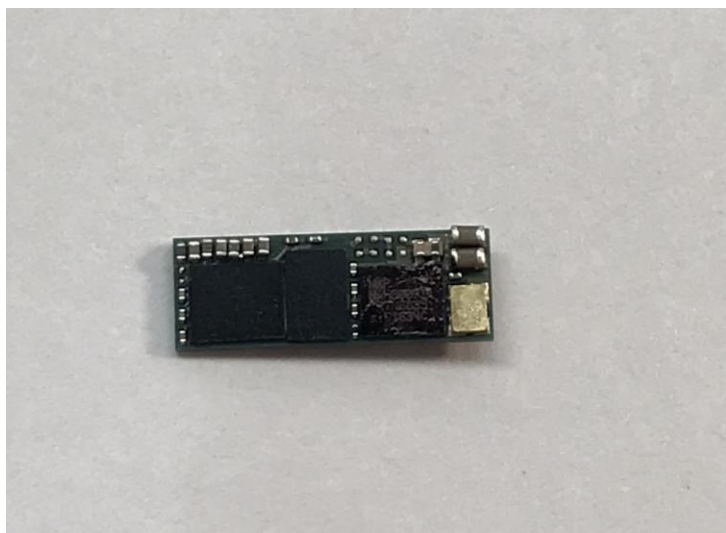


Figure 5: PL3 hybrid without epoxy

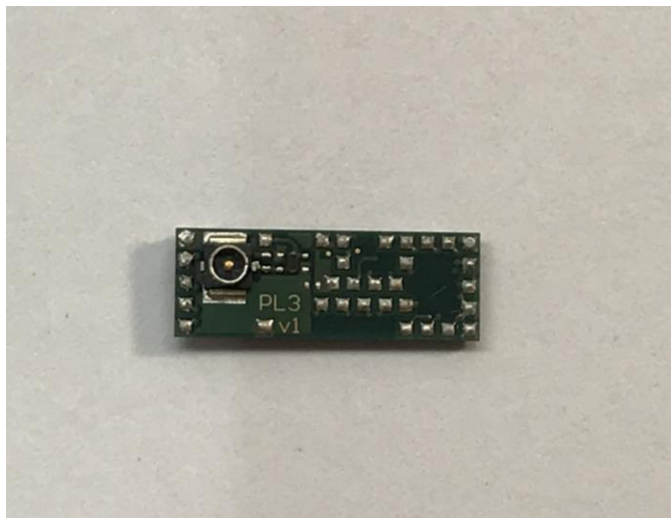


Figure 6: PL3 hybrid – backside. Note: no components populated for production on the backside.