

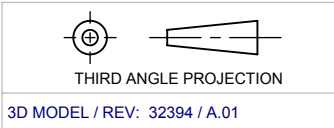
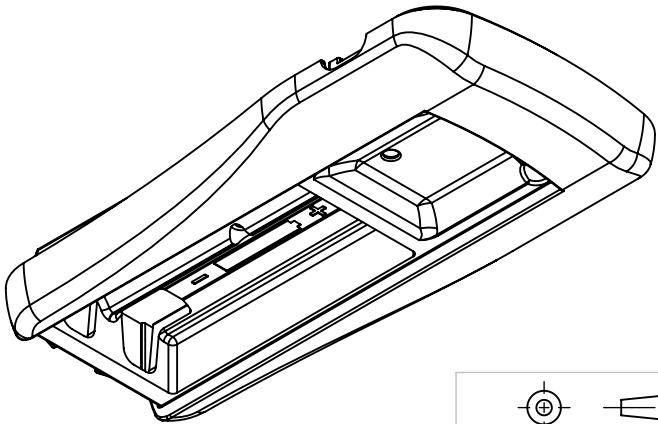
PART #	REV
32394-000	B


REVISION HISTORY					
REV	DESCRIPTION	DRAFTER / DATE	ENG. APPD / DATE	Q.A. APPD / DATE	ECO
A	ALPHA ECO RELEASE	L.FRERICHS 04/12/17	K. KUTINA / 4-17-17	S. KROONA / 4-13-17	52923
B	UPDATE ARWORK TO INCLUDE "FCC ID:"	W. TOURDOT / 05-15-2017			

Draft Rev B
W. Tourdot / 05-15-2017

- NOTES: UNLESS OTHERWISE SPECIFIED
- THIS PRINT IS ARTWORK ONLY.
 - MARK PART PER VIEWS AND TABLE SHOWN. SEE SUBSEQUENT SHEETS FOR DETAILS
 - VIEWS SHOWN AT 1:1 SCALE ARE FOR IMPORTING TO GRAPHICS SOFTWARE AS REQUIRED.
 - MARKINGS MAY BE APPLIED TO SPARE PARTS OR ASSEMBLIES CONTAINING AS-MOLDED OR PAINTED PARTS.
 - SERIAL NUMBER CONFIGURATION: YY000000
 - YY = YEAR (FONT = ALBERTUS/EQUIVALENT)
 - 000000 = SEQUENTIAL SERIAL NUMBER (FONT = ALBERTUS/EQUIVALENT)

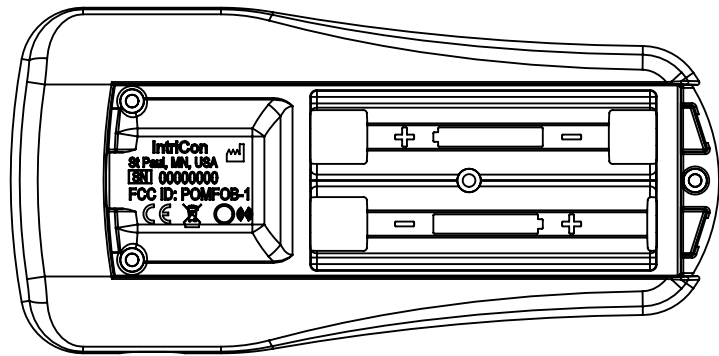
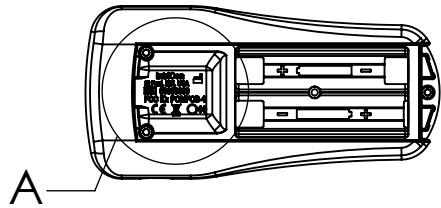
- 3D CAD MODELING REFERENCE NOTES:
- THIS PART IS A DIRECT IMPORT OF THE SOLID MODEL FOR THE BASE PART. NO FEATURES HAVE BEEN OFFSET BY THE NOMINAL COATING THICKNESS.
 - CHANGES TO THE GEOMETRY OF THE BASE PART MODEL WILL BE AUTOMATICALLY APPLIED TO THIS PART WHEN BOTH PARTS ARE IN SESSION AT THE SAME TIME.
 - THE 3D MODEL FILE CONTAINS TWO CONFIGURATIONS FOR EACH -TAB.
 - THE "3XXXX-TAB PRINT" CONFIGURATION CONTAINS THE PART BODY AND IS TO BE USED ONLY ON THE PRINT TO ALLOW DIMENSIONS USED TO LOCATE THE ARTWORK ON THE PART.
 - THE "3XXXX-TAB" CONFIGURATION CONTAINS THE ARTWORK ONLY AND IS TO BE USED IN ASSEMBLIES AND SPARE PARTS.
 - IF THERE IS MORE THAN ONE -TAB THAT IS VISUALLY THE SAME AS ANOTHER, OTHER THAN ANY TEXT THAT IS INDICATED IN THE TABLE, THE CONFIGURATION TO BE USED WITHIN CAD MODELS FOR THAT -TAB WILL BE THE LOWEST NUMBER -TAB THAT EXISTS FOR THAT VISUAL REPRESENTATION.
 - EACH VIEW WILL BE LABELED WITH ALL -TAB PART NUMBERS THAT APPLY TO THAT SET OF VISUALLY SAME ARTWORKS.



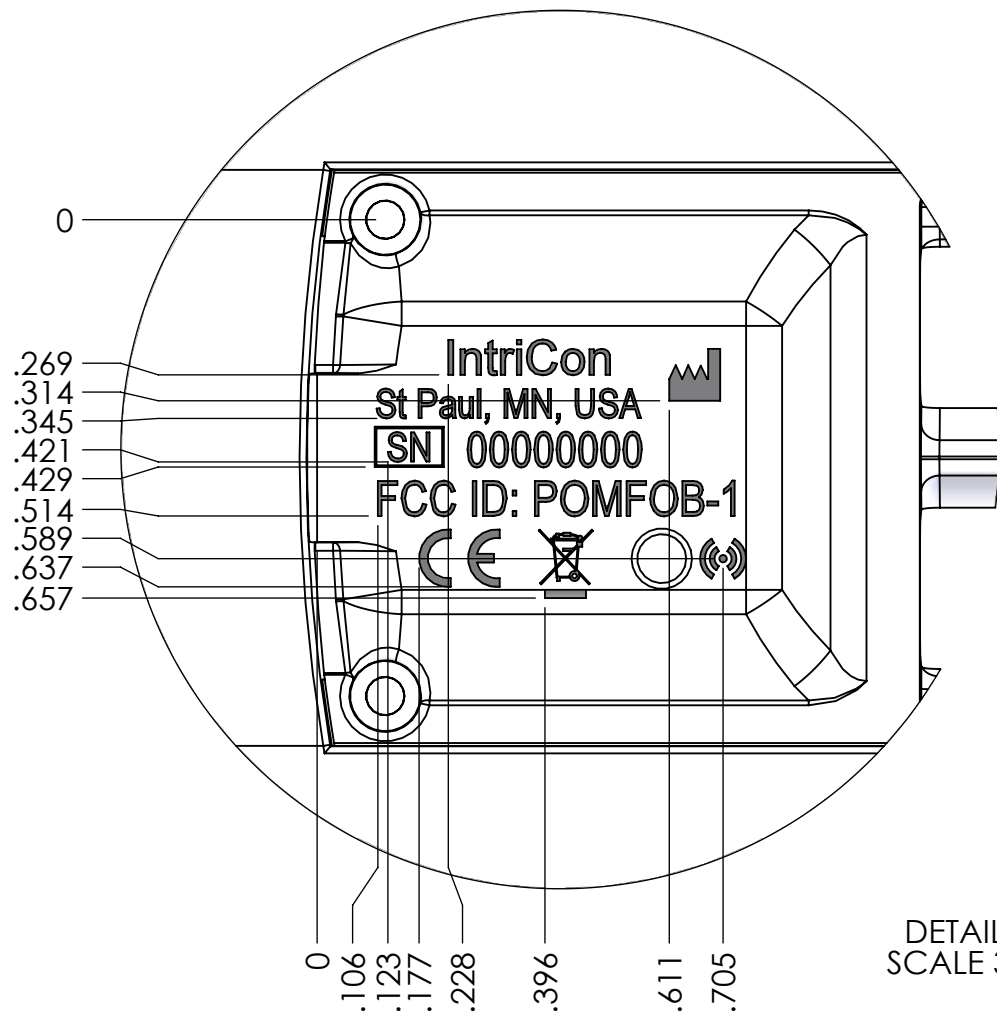
<div></div>					
"CONFIDENTIAL - THIS DOCUMENT CONTAINS PROPRIETARY INFORMATION OF INTRICON CORPORATION, NOT TO BE USED FOR ANY PURPOSE UNAUTHORIZED BY INTRICON CORPORATION"				TOL. UNLESS OTHERWISE SPECIFIED XX ± .01 XXX ± .005 XXXX ± .0005 ANGLE: ± 1°	
SIZE	TITLE:				
B	ARTWORK - LSR MRK -FOB				
MATERIAL		FINISH		DWG. NO.	REV
NA		NA		32394	A.01
TOOL NO.		DO NOT SCALE DRAWING		SCALE: 2:1	SHEET 1 OF 2
NA					

3D MODEL / REV: 32394 / A.01

-000



ARTWORK EXPORT VIEW
SCALE 1:1




DETAIL A
SCALE 3:1

FONT/SIZE
"IntriCon": ARIAL NARROW 6 PT
"St Paul, MN, USA": ARIAL NARROW 5 PT
"SN": ARIAL NARROW 5 PT
"00000000": ARIAL NARROW 6 PT
"FCC ID: POMFOB-1": ARIAL NARROW 6 PT

ALL OTHERS CUSTOM SYMBOLS TO BE IMPORTED FROM 1:1 SCALE ARTWORK EXPORT VIEW.

THIS VIEW SHOWN SHADED TO INDICATE WHICH SYMBOLS TO BE FILLED

Draft Rev B
W. Tourdot / 05-15-2017

DO NOT SCALE DRAWING			
	"CONFIDENTIAL - THIS DOCUMENT CONTAINS PROPRIETARY INFORMATION OF INTRICON CORPORATION. NOT TO BE USED FOR ANY PURPOSE UNAUTHORIZED BY INTRICON CORPORATION"		
	DWG. NO.	32394	REV A.01
	SCALE: 2:1		SHEET 2 OF 2