

**DASY5 Validation Report for Body TSL**

Date: 23.01.2017

Test Laboratory: SPEAG, Zurich, Switzerland

**DUT: CLA-150; Type: CLA-150; Serial: 4008**

Communication System: UID 0 - CW; Frequency: 150 MHz

Medium parameters used:  $f = 150$  MHz;  $\sigma = 0.82$  S/m;  $\epsilon_r = 61.4$ ;  $\rho = 1000$  kg/m<sup>3</sup>

Phantom section: Flat Section

Measurement Standard: DASY5 (IEEE/IEC/ANSI C63.19-2011)

DASY52 Configuration:

- Probe: EX3DV4 - SN3877; ConvF(11.54, 11.54, 11.54); Calibrated: 31.12.2016;
- Sensor-Surface: 1.4mm (Mechanical Surface Detection)
- Electronics: DAE4 Sn654; Calibrated: 12.08.2016
- Phantom: ELI v4.0; Type: QDOVA001BB; Serial: TP:1003
- DASY52 52.8.8(1258); SEMCAD X 14.6.10(7372)

**CLA Calibration for MSL-LF Tissue/CLA150, touch configuration, Pin=1W/Area Scan**

**(81x81x1):** Interpolated grid: dx=1.500 mm, dy=1.500 mm

Maximum value of SAR (interpolated) = 5.72 W/kg

**CLA Calibration for MSL-LF Tissue/CLA150, touch configuration, Pin=1W/Zoom Scan,**

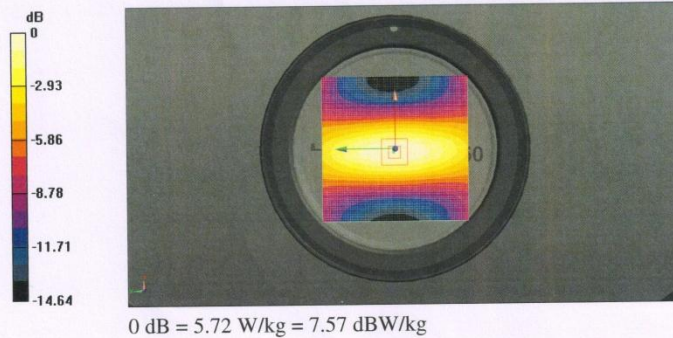
**dist=1.4mm (8x10x7)/Cube 0:** Measurement grid: dx=4mm, dy=4mm, dz=1.4mm

Reference Value = 82.65 V/m; Power Drift = 0.01 dB

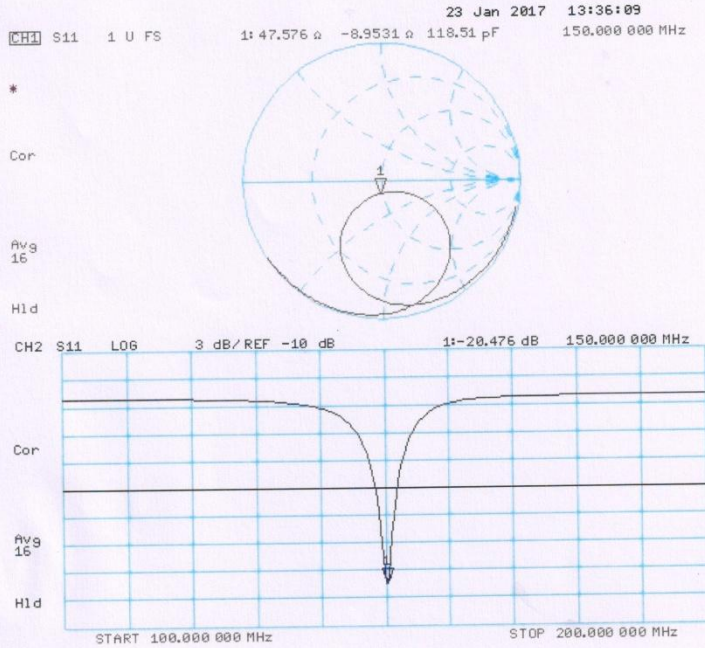
Peak SAR (extrapolated) = 7.67 W/kg

**SAR(1 g) = 4.03 W/kg; SAR(10 g) = 2.67 W/kg**

Maximum value of SAR (measured) = 5.66 W/kg



**Impedance Measurement Plot for Body TSL**



The results shown in this test report refer only to the sample(s) tested unless otherwise stated and the sample(s) are retained for 30 days only. The document is issued by AGC, this document cannot be reproduced except in full with our prior written permission. The more details and the authenticity of the report will be confirmed at <http://www.agc-cert.com>.





## SAR Reference Dipole Calibration Report

Ref : ACR.69.2.17.SATU.A

### ATTESTATION OF GLOBAL COMPLIANCE CO. LTD.

1&2F, NO.2 BUILDING, HUAFENG NO.1 INDUSTRIAL  
PARK, GUSHU COMMUNITY XIXIANG STREET  
BAOAN DISTRICT, SHENZHEN, P.R. CHINA  
MVG COMOSAR REFERENCE DIPOLE

FREQUENCY: 450 MHZ

SERIAL NO.: SN 46/11 DIP 0G450-184

Calibrated at MVG US

2105 Barrett Park Dr. - Kennesaw, GA 30144



Calibration Date: 03/10/2017

#### Summary:

This document presents the method and results from an accredited SAR reference dipole calibration performed in MVG USA using the COMOSAR test bench. All calibration results are traceable to national metrology institutions.

The results shown in this test report refer only to the sample(s) tested unless otherwise stated and the sample(s) are retained for 30 days only. The document is issued by AGC, this document cannot be reproduced except in full with our prior written permission. The more details and the authenticity of the report will be confirmed at <http://www.agc-cert.com>.



**SAR REFERENCE DIPOLE CALIBRATION REPORT**

Ref: ACR.69.2.17.SATU.A

|               | Name          | Function        | Date      | Signature            |
|---------------|---------------|-----------------|-----------|----------------------|
| Prepared by : | Jérôme LUC    | Product Manager | 3/10/2017 | <i>JL</i>            |
| Checked by :  | Jérôme LUC    | Product Manager | 3/10/2017 | <i>JL</i>            |
| Approved by : | Kim RUTKOWSKI | Quality Manager | 3/10/2017 | <i>Kim Rutkowski</i> |

|                |  |
|----------------|--|
|                | Customer Name                                      |
| Distribution : | ATTESTATION<br>OF GLOBAL<br>COMPLIANCE<br>CO. LTD. |

| Issue | Date      | Modifications   |
|-------|-----------|-----------------|
| A     | 3/10/2017 | Initial release |
|       |           |                 |
|       |           |                 |

Page: 2/11

*This document shall not be reproduced, except in full or in part, without the written approval of MVG.  
The information contained herein is to be used only for the purpose for which it is submitted and is not to be released in whole or part without written approval of MVG.*

The results shown in this test report refer only to the sample(s) tested unless otherwise stated and the sample(s) are retained for 30 days only. The document is issued by AGC, this document cannot be reproduced except in full with our prior written permission. The more details and the authenticity of the report will be confirmed at <http://www.agc-cert.com>.



**SAR REFERENCE DIPOLE CALIBRATION REPORT**

Ref: ACR.69.2.17.SATU.A

**TABLE OF CONTENTS**

|     |   |    |
|-----|---|----|
| 1   | Introduction.....                             | 4  |
| 2   | Device Under Test.....                        | 4  |
| 3   | Product Description.....                      | 4  |
| 3.1 | General Information.....                      | 4  |
| 4   | Measurement Method.....                       | 5  |
| 4.1 | Return Loss Requirements.....                 | 5  |
| 4.2 | Mechanical Requirements.....                  | 5  |
| 5   | Measurement Uncertainty.....                  | 5  |
| 5.1 | Return Loss.....                              | 5  |
| 5.2 | Dimension Measurement.....                    | 5  |
| 5.3 | Validation Measurement.....                   | 5  |
| 6   | Calibration Measurement Results.....          | 6  |
| 6.1 | Return Loss and Impedance In Head Liquid..... | 6  |
| 6.2 | Return Loss and Impedance In Body Liquid..... | 6  |
| 6.3 | Mechanical Dimensions.....                    | 6  |
| 7   | Validation measurement.....                   | 7  |
| 7.1 | Head Liquid Measurement.....                  | 7  |
| 7.2 | SAR Measurement Result With Head Liquid.....  | 8  |
| 7.3 | Body Liquid Measurement.....                  | 9  |
| 7.4 | SAR Measurement Result With Body Liquid.....  | 10 |
| 8   | List of Equipment.....                        | 11 |

Page: 3/11

*This document shall not be reproduced, except in full or in part, without the written approval of MVG.  
The information contained herein is to be used only for the purpose for which it is submitted and is not to be released in whole or part without written approval of MVG.*

The results shown in this test report refer only to the sample(s) tested unless otherwise stated and the sample(s) are retained for 30 days only. The document is issued by AGC, this document cannot be reproduced except in full with our prior written permission. The more details and the authenticity of the report will be confirmed at <http://www.agc-cert.com>.





**1 INTRODUCTION**

This document contains a summary of the requirements set forth by the IEEE 1528, FCC KDBs and CEI/IEC 62209 standards for reference dipoles used for SAR measurement system validations and the measurements that were performed to verify that the product complies with the fore mentioned standards.

**2 DEVICE UNDER TEST**

| Device Under Test              |                                  |
|--------------------------------|----------------------------------|
| Device Type                    | COMOSAR 450 MHz REFERENCE DIPOLE |
| Manufacturer                   | MVG                              |
| Model                          | SID450                           |
| Serial Number                  | SN 46/11 DIP 0G450-184           |
| Product Condition (new / used) | Used                             |

A yearly calibration interval is recommended.

**3 PRODUCT DESCRIPTION**

**3.1 GENERAL INFORMATION**

MVG’s COMOSAR Validation Dipoles are built in accordance to the IEEE 1528, FCC KDBs and CEI/IEC 62209 standards. The product is designed for use with the COMOSAR test bench only.



Figure 1 – MVG COMOSAR Validation Dipole

*This document shall not be reproduced, except in full or in part, without the written approval of MVG. The information contained herein is to be used only for the purpose for which it is submitted and is not to be released in whole or part without written approval of MVG.*

The results shown in this test report refer only to the sample(s) tested unless otherwise stated and the sample(s) are retained for 30 days only. The document is issued by AGC, this document cannot be reproduced except in full with our prior written permission. The more details and the authenticity of the report will be confirmed at <http://www.agc-cert.com>.



**4 MEASUREMENT METHOD**

The IEEE 1528, FCC KDBs and CEI/IEC 62209 standards provide requirements for reference dipoles used for system validation measurements. The following measurements were performed to verify that the product complies with the fore mentioned standards.

**4.1 RETURN LOSS REQUIREMENTS**

The dipole used for SAR system validation measurements and checks must have a return loss of -20 dB or better. The return loss measurement shall be performed against a liquid filled flat phantom, with the phantom constructed as outlined in the fore mentioned standards.

**4.2 MECHANICAL REQUIREMENTS**

The IEEE Std. 1528 and CEI/IEC 62209 standards specify the mechanical components and dimensions of the validation dipoles, with the dimensions frequency and phantom shell thickness dependent. The COMOSAR test bench employs a 2 mm phantom shell thickness therefore the dipoles sold for use with the COMOSAR test bench comply with the requirements set forth for a 2 mm phantom shell thickness.

**5 MEASUREMENT UNCERTAINTY**

All uncertainties listed below represent an expanded uncertainty expressed at approximately the 95% confidence level using a coverage factor of k=2, traceable to the Internationally Accepted Guides to Measurement Uncertainty.

**5.1 RETURN LOSS**

The following uncertainties apply to the return loss measurement:

| Frequency band | Expanded Uncertainty on Return Loss |
|----------------|-------------------------------------|
| 400-6000MHz    | 0.1 dB                              |

**5.2 DIMENSION MEASUREMENT**

The following uncertainties apply to the dimension measurements:

| Length (mm) | Expanded Uncertainty on Length |
|-------------|--------------------------------|
| 3 - 300     | 0.05 mm                        |

**5.3 VALIDATION MEASUREMENT**

The guidelines outlined in the IEEE 1528, FCC KDBs, CENELEC EN50361 and CEI/IEC 62209 standards were followed to generate the measurement uncertainty for validation measurements.

| Scan Volume | Expanded Uncertainty |
|-------------|----------------------|
| 1 g         | 20.3 %               |

*This document shall not be reproduced, except in full or in part, without the written approval of MVG. The information contained herein is to be used only for the purpose for which it is submitted and is not to be released in whole or part without written approval of MVG.*



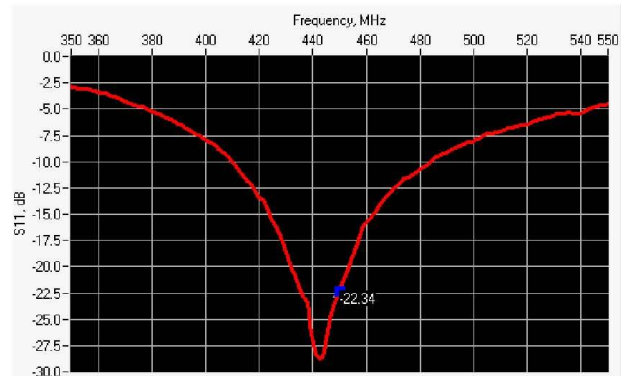
**SAR REFERENCE DIPOLE CALIBRATION REPORT**

Ref: ACR.69.2.17.SATU.A

|      |        |
|------|--------|
| 10 g | 20.1 % |
|------|--------|

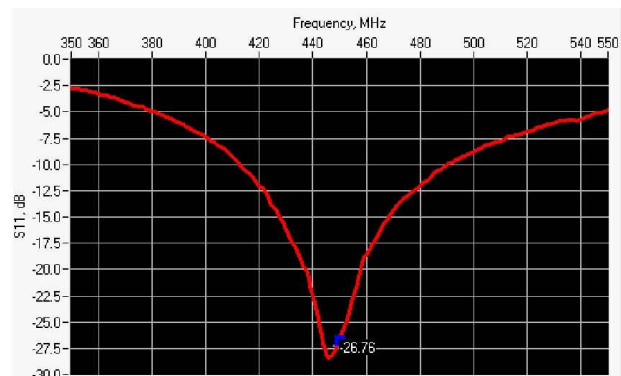
**6 CALIBRATION MEASUREMENT RESULTS**

**6.1 RETURN LOSS AND IMPEDANCE IN HEAD LIQUID**



| Frequency (MHz) | Return Loss (dB) | Requirement (dB) | Impedance       |
|-----------------|------------------|------------------|-----------------|
| 450             | -22.34           | -20              | 46.6 Ω - 6.6 jΩ |

**6.2 RETURN LOSS AND IMPEDANCE IN BODY LIQUID**



| Frequency (MHz) | Return Loss (dB) | Requirement (dB) | Impedance       |
|-----------------|------------------|------------------|-----------------|
| 450             | -26.76           | -20              | 46.6 Ω - 2.7 jΩ |

**6.3 MECHANICAL DIMENSIONS**

| Frequency MHz | L mm       |          | h mm       |          | d mm      |          |
|---------------|------------|----------|------------|----------|-----------|----------|
|               | required   | measured | required   | measured | required  | measured |
| 300           | 420.0 ±1 % |          | 250.0 ±1 % |          | 6.35 ±1 % |          |

Page: 6/11

*This document shall not be reproduced, except in full or in part, without the written approval of MVG.  
The information contained herein is to be used only for the purpose for which it is submitted and is not to be released in whole or part without written approval of MVG.*

The results shown in this test report refer only to the sample(s) tested unless otherwise stated and the sample(s) are retained for 30 days only. The document is issued by AGC, this document cannot be reproduced except in full with our prior written permission. The more details and the authenticity of the report will be confirmed at <http://www.agc-cert.com>.





**SAR REFERENCE DIPOLE CALIBRATION REPORT**

Ref: ACR.69.2.17.SATU.A

|      |             |      |             |      |            |      |
|------|-------------|------|-------------|------|------------|------|
| 450  | 290.0 ±1 %. | PASS | 166.7 ±1 %. | PASS | 6.35 ±1 %. | PASS |
| 750  | 176.0 ±1 %. |      | 100.0 ±1 %. |      | 6.35 ±1 %. |      |
| 835  | 161.0 ±1 %. |      | 89.8 ±1 %.  |      | 3.6 ±1 %.  |      |
| 900  | 149.0 ±1 %. |      | 83.3 ±1 %.  |      | 3.6 ±1 %.  |      |
| 1450 | 89.1 ±1 %.  |      | 51.7 ±1 %.  |      | 3.6 ±1 %.  |      |
| 1500 | 80.5 ±1 %.  |      | 50.0 ±1 %.  |      | 3.6 ±1 %.  |      |
| 1640 | 79.0 ±1 %.  |      | 45.7 ±1 %.  |      | 3.6 ±1 %.  |      |
| 1750 | 75.2 ±1 %.  |      | 42.9 ±1 %.  |      | 3.6 ±1 %.  |      |
| 1800 | 72.0 ±1 %.  |      | 41.7 ±1 %.  |      | 3.6 ±1 %.  |      |
| 1900 | 68.0 ±1 %.  |      | 39.5 ±1 %.  |      | 3.6 ±1 %.  |      |
| 1950 | 66.3 ±1 %.  |      | 38.5 ±1 %.  |      | 3.6 ±1 %.  |      |
| 2000 | 64.5 ±1 %.  |      | 37.5 ±1 %.  |      | 3.6 ±1 %.  |      |
| 2100 | 61.0 ±1 %.  |      | 35.7 ±1 %.  |      | 3.6 ±1 %.  |      |
| 2300 | 55.5 ±1 %.  |      | 32.6 ±1 %.  |      | 3.6 ±1 %.  |      |
| 2450 | 51.5 ±1 %.  |      | 30.4 ±1 %.  |      | 3.6 ±1 %.  |      |
| 2600 | 48.5 ±1 %.  |      | 28.8 ±1 %.  |      | 3.6 ±1 %.  |      |
| 3000 | 41.5 ±1 %.  |      | 25.0 ±1 %.  |      | 3.6 ±1 %.  |      |
| 3500 | 37.0 ±1 %.  |      | 26.4 ±1 %.  |      | 3.6 ±1 %.  |      |
| 3700 | 34.7 ±1 %.  |      | 26.4 ±1 %.  |      | 3.6 ±1 %.  |      |

**7 VALIDATION MEASUREMENT**

The IEEE Std. 1528, FCC KDBs and CEI/IEC 62209 standards state that the system validation measurements must be performed using a reference dipole meeting the fore mentioned return loss and mechanical dimension requirements. The validation measurement must be performed against a liquid filled flat phantom, with the phantom constructed as outlined in the fore mentioned standards. Per the standards, the dipole shall be positioned below the bottom of the phantom, with the dipole length centered and parallel to the longest dimension of the flat phantom, with the top surface of the dipole at the described distance from the bottom surface of the phantom.

**7.1 HEAD LIQUID MEASUREMENT**

| Frequency<br>MHz | Relative permittivity ( $\epsilon_r'$ ) |          | Conductivity ( $\sigma$ ) S/m |          |
|------------------|---|----------|-------------------------------|----------|
|                  | required                                | measured | required                      | measured |
| 300              | 45.3 ±5 %                               |          | 0.87 ±5 %                     |          |
| 450              | 43.5 ±5 %                               | PASS     | 0.87 ±5 %                     | PASS     |
| 750              | 41.9 ±5 %                               |          | 0.89 ±5 %                     |          |
| 835              | 41.5 ±5 %                               |          | 0.90 ±5 %                     |          |
| 900              | 41.5 ±5 %                               |          | 0.97 ±5 %                     |          |
| 1450             | 40.5 ±5 %                               |          | 1.20 ±5 %                     |          |
| 1500             | 40.4 ±5 %                               |          | 1.23 ±5 %                     |          |
| 1640             | 40.2 ±5 %                               |          | 1.31 ±5 %                     |          |
| 1750             | 40.1 ±5 %                               |          | 1.37 ±5 %                     |          |

Page: 7/11

*This document shall not be reproduced, except in full or in part, without the written approval of MVG. The information contained herein is to be used only for the purpose for which it is submitted and is not to be released in whole or part without written approval of MVG.*

The results shown in this test report refer only to the sample(s) tested unless otherwise stated and the sample(s) are retained for 30 days only. The document is issued by AGC, this document cannot be reproduced except in full with our prior written permission. The more details and the authenticity of the report will be confirmed at <http://www.agc-cert.com>.



**SAR REFERENCE DIPOLE CALIBRATION REPORT**

Ref: ACR.69.2.17.SATU.A

|      |           |  |           |  |
|------|-----------|--|-----------|--|
| 1800 | 40.0 ±5 % |  | 1.40 ±5 % |  |
| 1900 | 40.0 ±5 % |  | 1.40 ±5 % |  |
| 1950 | 40.0 ±5 % |  | 1.40 ±5 % |  |
| 2000 | 40.0 ±5 % |  | 1.40 ±5 % |  |
| 2100 | 39.8 ±5 % |  | 1.49 ±5 % |  |
| 2300 | 39.5 ±5 % |  | 1.67 ±5 % |  |
| 2450 | 39.2 ±5 % |  | 1.80 ±5 % |  |
| 2600 | 39.0 ±5 % |  | 1.96 ±5 % |  |
| 3000 | 38.5 ±5 % |  | 2.40 ±5 % |  |
| 3500 | 37.9 ±5 % |  | 2.91 ±5 % |  |

**7.2 SAR MEASUREMENT RESULT WITH HEAD LIQUID**

The IEEE Std. 1528 and CEI/IEC 62209 standards state that the system validation measurements should produce the SAR values shown below (for phantom thickness of 2 mm), within the uncertainty for the system validation. All SAR values are normalized to 1 W forward power. In bracket, the measured SAR is given with the used input power.

|   |  |
|---|--|
| Software                                  | OPENSAR V4                                   |
| Phantom                                   | SN 20/09 SAM71                               |
| Probe                                     | SN 18/11 EPG122                              |
| Liquid                                    | Head Liquid Values: eps' : 42.2 sigma : 0.86 |
| Distance between dipole center and liquid | 15.0 mm                                      |
| Area scan resolution                      | dx=8mm/dy=8mm                                |
| Zoon Scan Resolution                      | dx=8mm/dy=8mm/dz=5mm                         |
| Frequency                                 | 450 MHz                                      |
| Input power                               | 20 dBm                                       |
| Liquid Temperature                        | 21 °C  |
| Lab Temperature                           | 21 °C  |
| Lab Humidity                              | 45 %   |

| Frequency MHz | 1 g SAR (W/kg/W) |             | 10 g SAR (W/kg/W) |             |
|---------------|------------------|-------------|-------------------|-------------|
|               | required         | measured    | required          | measured    |
| 300           | 2.85             |             | 1.94              |             |
| 450           | 4.58             | 4.74 (0.47) | 3.06              | 3.12 (0.31) |
| 750           | 8.49             |             | 5.55              |             |
| 835           | 9.56             |             | 6.22              |             |
| 900           | 10.9             |             | 6.99              |             |
| 1450          | 29               |             | 16                |             |
| 1500          | 30.5             |             | 16.8              |             |
| 1640          | 34.2             |             | 18.4              |             |
| 1750          | 36.4             |             | 19.3              |             |
| 1800          | 38.4             |             | 20.1              |             |

Page: 8/11

*This document shall not be reproduced, except in full or in part, without the written approval of MVG. The information contained herein is to be used only for the purpose for which it is submitted and is not to be released in whole or part without written approval of MVG.*

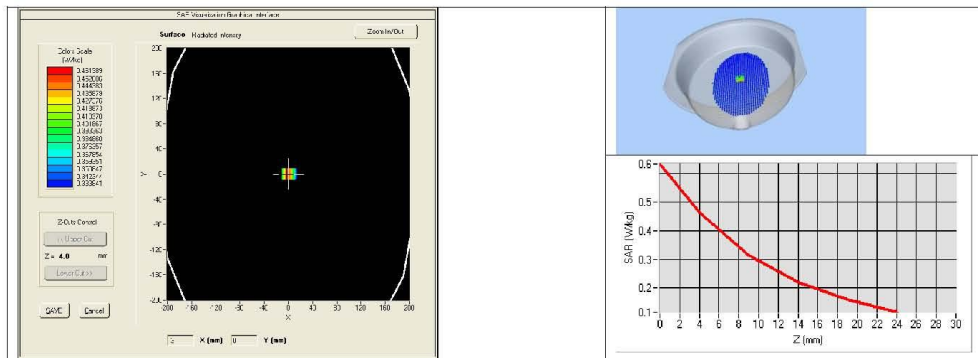
The results shown in this test report refer only to the sample(s) tested unless otherwise stated and the sample(s) are retained for 30 days only. The document is issued by AGC, this document cannot be reproduced except in full with our prior written permission. The more details and the authenticity of the report will be confirmed at <http://www.agc-cert.com>.



**SAR REFERENCE DIPOLE CALIBRATION REPORT**

Ref: ACR.69.2.17.SATU.A

|      |      |      |  |
|------|------|------|--|
| 1900 | 39.7 | 20.5 |  |
| 1950 | 40.5 | 20.9 |  |
| 2000 | 41.1 | 21.1 |  |
| 2100 | 43.6 | 21.9 |  |
| 2300 | 48.7 | 23.3 |  |
| 2450 | 52.4 | 24   |  |
| 2600 | 55.3 | 24.6 |  |
| 3000 | 63.8 | 25.7 |  |
| 3500 | 67.1 | 25   |  |
| 3700 | 67.4 | 24.2 |  |



**7.3 BODY LIQUID MEASUREMENT**

| Frequency<br>MHz | Relative permittivity ( $\epsilon_r'$ ) |          | Conductivity ( $\sigma$ ) S/m |          |
|------------------|---|----------|-------------------------------|----------|
|                  | required                                | measured | required                      | measured |
| 150              | 61.9 ±5 %                               |          | 0.80 ±5 %                     |          |
| 300              | 58.2 ±5 %                               |          | 0.92 ±5 %                     |          |
| 450              | 56.7 ±5 %                               | PASS     | 0.94 ±5 %                     | PASS     |
| 750              | 55.5 ±5 %                               |          | 0.96 ±5 %                     |          |
| 835              | 55.2 ±5 %                               |          | 0.97 ±5 %                     |          |
| 900              | 55.0 ±5 %                               |          | 1.05 ±5 %                     |          |
| 915              | 55.0 ±5 %                               |          | 1.06 ±5 %                     |          |
| 1450             | 54.0 ±5 %                               |          | 1.30 ±5 %                     |          |
| 1610             | 53.8 ±5 %                               |          | 1.40 ±5 %                     |          |
| 1800             | 53.3 ±5 %                               |          | 1.52 ±5 %                     |          |
| 1900             | 53.3 ±5 %                               |          | 1.52 ±5 %                     |          |
| 2000             | 53.3 ±5 %                               |          | 1.52 ±5 %                     |          |
| 2100             | 53.2 ±5 %                               |          | 1.62 ±5 %                     |          |

Page: 9/11

*This document shall not be reproduced, except in full or in part, without the written approval of MVG. The information contained herein is to be used only for the purpose for which it is submitted and is not to be released in whole or part without written approval of MVG.*

The results shown in this test report refer only to the sample(s) tested unless otherwise stated and the sample(s) are retained for 30 days only. The document is issued by AGC, this document cannot be reproduced except in full with our prior written permission. The more details and the authenticity of the report will be confirmed at <http://www.agc-cert.com>.





**SAR REFERENCE DIPOLE CALIBRATION REPORT**

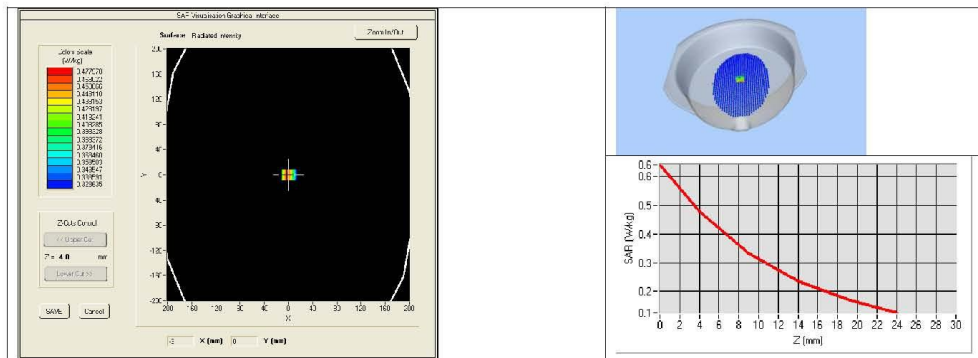
Ref: ACR.69.2.17.SATU.A

|      |            |            |
|------|------------|------------|
| 2300 | 52.9 ±5 %  | 1.81 ±5 %  |
| 2450 | 52.7 ±5 %  | 1.95 ±5 %  |
| 2600 | 52.5 ±5 %  | 2.16 ±5 %  |
| 3000 | 52.0 ±5 %  | 2.73 ±5 %  |
| 3500 | 51.3 ±5 %  | 3.31 ±5 %  |
| 3700 | 51.0 ±5 %  | 3.55 ±5 %  |
| 5200 | 49.0 ±10 % | 5.30 ±10 % |
| 5300 | 48.9 ±10 % | 5.42 ±10 % |
| 5400 | 48.7 ±10 % | 5.53 ±10 % |
| 5500 | 48.6 ±10 % | 5.65 ±10 % |
| 5600 | 48.5 ±10 % | 5.77 ±10 % |
| 5800 | 48.2 ±10 % | 6.00 ±10 % |

**7.4 SAR MEASUREMENT RESULT WITH BODY LIQUID**

|   |  |
|---|--|
| Software                                  | OPENSAR V4                                   |
| Phantom                                   | SN 20/09 SAM71                               |
| Probe                                     | SN 18/11 EPG122                              |
| Liquid                                    | Body Liquid Values: eps' : 57.6 sigma : 0.95 |
| Distance between dipole center and liquid | 15.0 mm                                      |
| Area scan resolution                      | dx=8mm/dy=8mm                                |
| Zoon Scan Resolution                      | dx=8mm/dy=8mm/dz=5mm                         |
| Frequency                                 | 450 MHz                                      |
| Input power                               | 20 dBm                                       |
| Liquid Temperature                        | 21 °C  |
| Lab Temperature                           | 21 °C  |
| Lab Humidity                              | 45 %   |

| Frequency MHz | 1 g SAR (W/kg/W) | 10 g SAR (W/kg/W) |
|---------------|------------------|-------------------|
|               | measured         | measured          |
| 450           | 4.78 (0.48)      | 3.19 (0.32)       |



Page: 10/11

*This document shall not be reproduced, except in full or in part, without the written approval of MVG. The information contained herein is to be used only for the purpose for which it is submitted and is not to be released in whole or part without written approval of MVG.*

The results shown in this test report refer only to the sample(s) tested unless otherwise stated and the sample(s) are retained for 30 days only. The document is issued by AGC, this document cannot be reproduced except in full with our prior written permission. The more details and the authenticity of the report will be confirmed at <http://www.agc-cert.com>.



**SAR REFERENCE DIPOLE CALIBRATION REPORT**

Ref: ACR.69.2.17.SATU.A

**8 LIST OF EQUIPMENT**

| Equipment Summary Sheet         |                      |                    |   |   |
|---------------------------------|----------------------|--------------------|---|---|
| Equipment Description           | Manufacturer / Model | Identification No. | Current Calibration Date                      | Next Calibration Date                         |
| SAM Phantom                     | MVG                  | SN-20/09-SAM71     | Validated. No cal required.                   | Validated. No cal required.                   |
| COMOSAR Test Bench              | Version 3            | NA                 | Validated. No cal required.                   | Validated. No cal required.                   |
| Network Analyzer                | Rhode & Schwarz ZVA  | SN100132           | 02/2016                                       | 02/2019                                       |
| Calipers                        | Carrera              | CALIPER-01         | 01/2017                                       | 01/2020                                       |
| Reference Probe                 | MVG                  | EPG122 SN 18/11    | 10/2016                                       | 10/2017                                       |
| Multimeter                      | Keithley 2000        | 1188656            | 01/2017                                       | 01/2020                                       |
| Signal Generator                | Agilent E4438C       | MY49070581         | 01/2017                                       | 01/2020                                       |
| Amplifier                       | Aethercomm           | SN 046             | Characterized prior to test. No cal required. | Characterized prior to test. No cal required. |
| Power Meter                     | HP E4418A            | US38261498         | 01/2017                                       | 01/2020                                       |
| Power Sensor                    | HP ECP-E26A          | US37181460         | 01/2017                                       | 01/2020                                       |
| Directional Coupler             | Narda 4216-20        | 01386              | Characterized prior to test. No cal required. | Characterized prior to test. No cal required. |
| Temperature and Humidity Sensor | Control Company      | 150798832          | 10/2015                                       | 10/2017                                       |

Page: 11/11

*This document shall not be reproduced, except in full or in part, without the written approval of MVG. The information contained herein is to be used only for the purpose for which it is submitted and is not to be released in whole or part without written approval of MVG.*

The results shown in this test report refer only to the sample(s) tested unless otherwise stated and the sample(s) are retained for 30 days only. The document is issued by AGC, this document cannot be reproduced except in full with our prior written permission. The more details and the authenticity of the report will be confirmed at <http://www.agc-cert.com>.