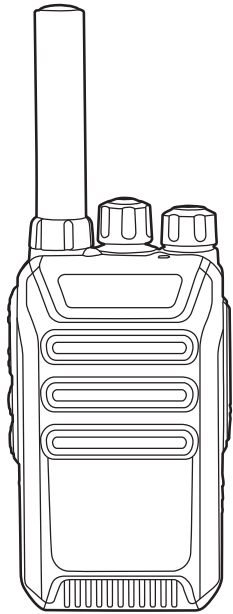


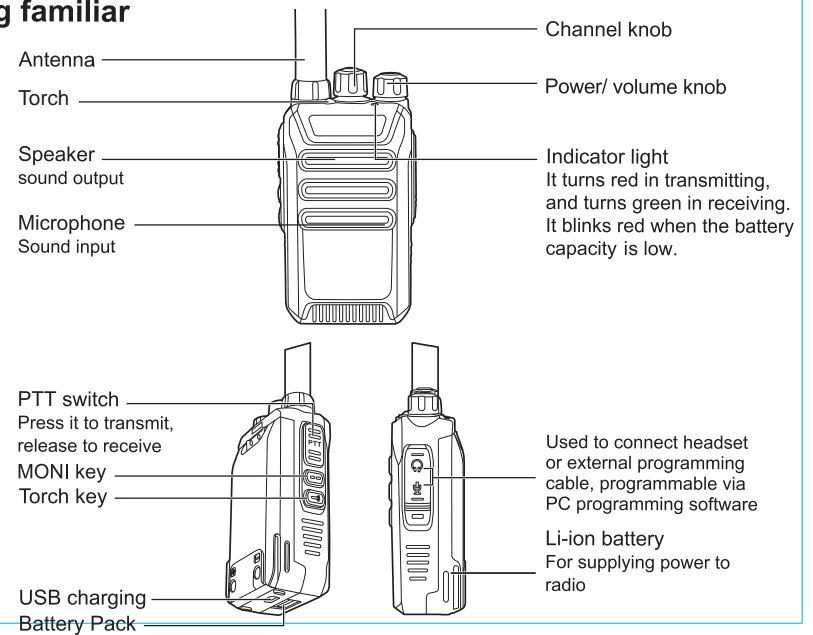
Analog Transceiver

Battery Save Function / Scrambler / Scan Function
 Busy Channel Lock / VOX / Voice Prompt



USER'S MANUAL

Getting familiar

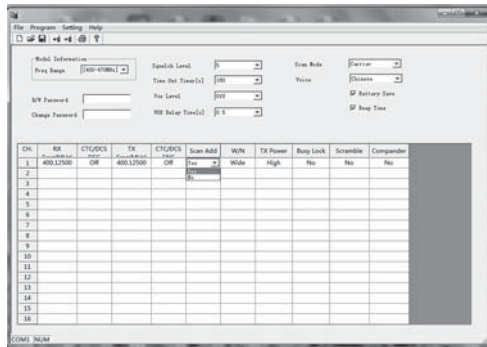


Basic operation

1. Scan Function

When the radio is allowed to be scanned, which can be set by the software, you can press the PTT key to turn on or turn off the scan. When the scan begins, indicators lights green, the radio will scan automatically from channel 1 to 16 which is defined as scan added. When there is signal in the scanning channel, it will stop in the channel for talk.

Note: When there is signal in the scanning channel, it will stop in the channel for a talk and after several seconds. Please note that scan is only available when there are two or more than two memory channels and two or more scan added channels.



2. Battery Save Function

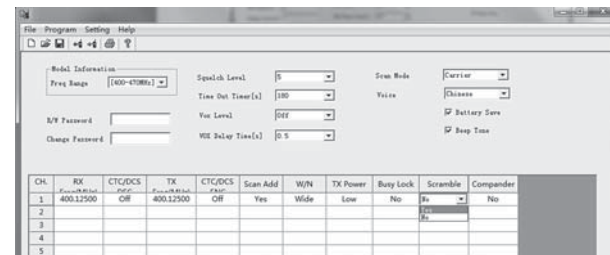
This function can be set by the software.

Turn on this function can make the standby time more longer. In the software:



3. Scramble

When the radio is allowed the scramble function, and press the key, TX voice will be sent out with scramble, other radio only received the signal when its scrambler also turns on.



4. Busy Channel Lock

You can turn on/off this function via software.

A: If the current channel does not have CTCSS/DCS, When there is signal, TX prohibited when you press PTT.

B: If the current channel does not have CTCSS/DCS, when there is signal which does not have CTCSS/DCS, TX prohibited when you press PTT.

C: If the current channels does not have CTCSS/DCS, when there is signal which have CTCSS/DCS, the radio will transmit when you press PTT.

5. Narrow Bandwidth

The Channel Spacing is narrow band(12.5KHz).

6. VOX

Speak to the microphone in normal voice to transmit, no need to press PTT switch, turn VOX on/off through the software.

A: when VOX is on in your working channel.

Speak to the microphone directly, it will transmit automatically.

The radio stops transmitting when there is no voice, and waits for receiving.

104

B: when a headset with a microphone is used.

When VOX is on, you should VOX again for the radio to identify voice volume.

If the microphone is too sensitive, the noise around radio will start transmitting.

If the microphone is not sensitive, the radio can not collect your voice, Please Adjust VOX level well to guarantee smooth communications.

English/Chinese Voice Prompt

Voice prompt

The default setting is Chinese voice prompt, and you will know the working condition of the radio with voice prompt.

- 1) The voice prompt can be selected "Chinese/English/Tone/OFF" through the menu "Voice/Beep Tone" of the "Optional Features" in the software for. When choosing "OFF", voice prompt turns off.
- 2) **Channel annunciation:** You will get to know the working conditions of current channel which is being operated.
- 3) **Low battery alert:** The radio will alert you when the battery capacity reaches the minimum operating voltage.

Low battery prompt

The default setting is Chinese voice prompt. When transmitting or standby, if the battery

105

capacity reaches the pre-determined low level, the indicator light blinks red, and a low battery alert tone will be heard.

The indicating tone can be "Please change the battery". When the low battery alert occurs, it can not transmit, please change or charge the battery.

Squelch function

The squelch level will determine the signal strength to open the speaker of the radio. If the squelch level is lower, the background noise of opening the radios speaker will be higher, and the corresponding communication range will be further, but the anti-interference capacity will be weaker.

The default setting of squelch level is 5, you can adjust it through the menu "Squelch Level" of the "Optional Features" in the software for. Level 0 to 9 can be selected. 0 is the lowest level.

Time out timer (TOT)

The purpose of TOT is to prevent any radio from talking in one channel for a long time, and to prevent the transceiver from being damaged because of continuous transmission.

If the transmitting time exceeds the TOT pre-set time, the radio will sound "Du" Release.

106

Power protection function

When the radio is in normal use or maintenance, the transmission will be prohibited if the working voltage is beyond the normal supplying voltage. Lower than 3V or higher than 5V, the transmission will be prohibition. The radio cannot power on when it is higher than 5V.

CTCSS/DCS

CTCSS and DCS is the sub-audio signaling, to prevent the radio from receiving unwanted signal in the same channel.

When the CTCSS/DCS is set, then within the communication range, you can only receive signals from the same channel with the same CTCSS/DCS setting. When the CTCSS/DCS is not set, you will get all the signal from the same channel within the communication range. You can set the CTCSS/DCS through the menu "QT/DQT ENC" or "QT/DQT DEC" of the "Channel information" in the software.

107

FCC Warning

Operation is subject to the following two conditions:

- (1) This device may not cause interference, and
- (2) This device must accept any interference, including interference that may cause undesired operation of the device.

RF Exposure Information:

This product is compliance to FCC RF Exposure requirements and refers to FCC website <https://apps.fcc.gov/oetcf/eas/reports/GenericSearch.cfm> search for FCC ID: POD-FRS to gain further information include SAR Values.

The device only supports simplex-mode and transmitting is no more than the rated duty cycle factor of 50% of the time. For hand-held operation, the radio should be held at least 25mm from the user's face. The use of belt clips, holsters and similar accessories should not contain metallic components in its assembly. The use of accessories that do not satisfy these requirements may not comply with RF exposure requirements, and should be avoided.

Please do not use this device when the antenna is obviously damaged.

FRS version channel list: (Channel spacing :12.5KHz , RF power :2W)

Channel	Frequency	Type	Channel	Frequency	Type
1	462.5625	FRS	19	462.6500	FRS
2	462.5875	FRS	20	462.6750	FRS
3	462.6125	FRS	21	462.7000	FRS
4	462.6375	FRS	22	462.7250	FRS
5	462.6625	FRS			
6	462.6875	FRS			
7	462.7125	FRS			
15	462.5500	FRS			
16	462.5750	FRS			
17	462.6000	FRS			
18	462.6250	FRS			