

## A040 External &amp; Construction Photographs

Document ID	Type	Issue	Date	Project	Product	Page
MPT_TN_0028	TN	1.0	05/25/2001	Touchstone	A040	6 (13)

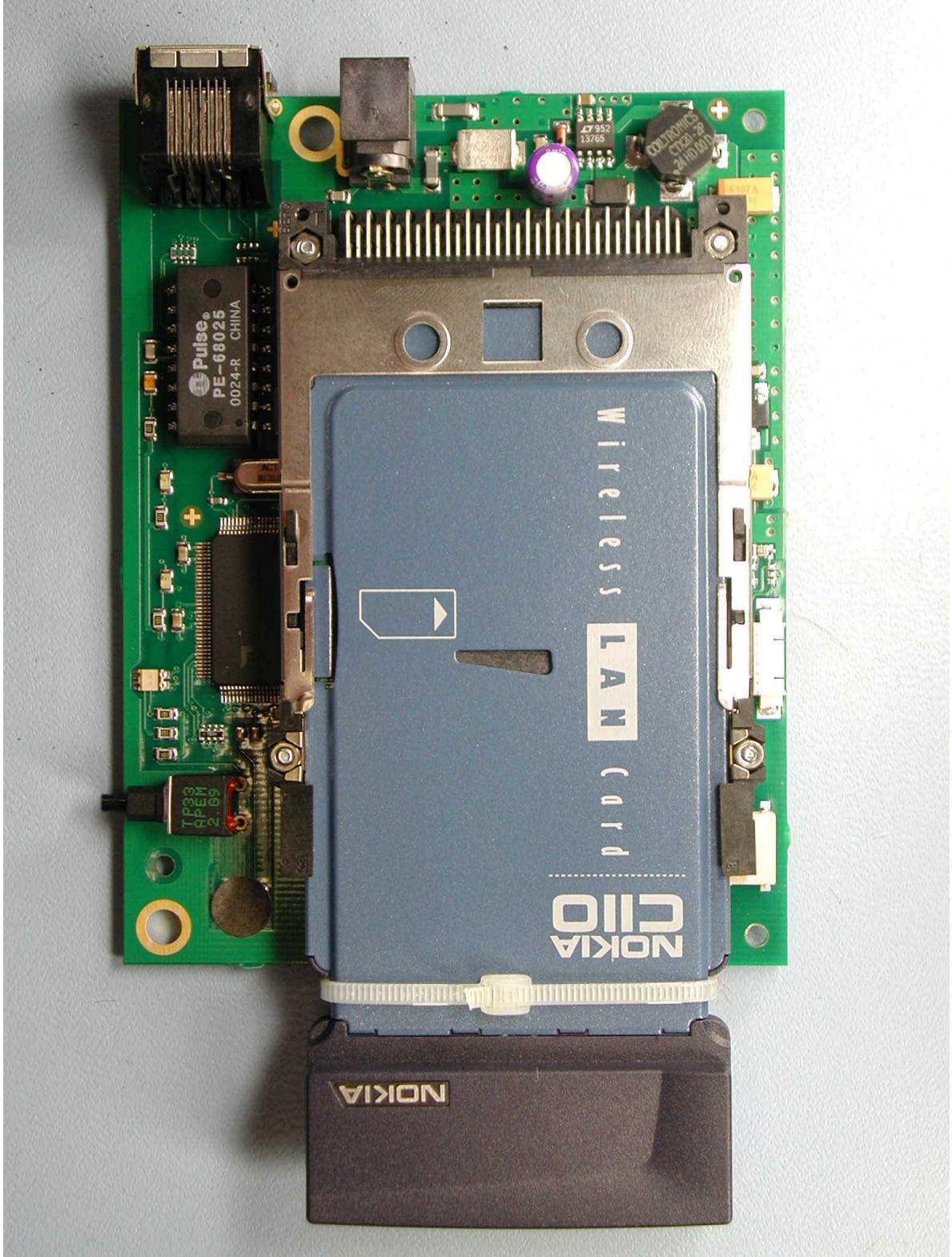
**4. A040 CONSTRUCTION PHOTOGRAPHS**

- Plate 6: PCB Front with Radio Card
- Plate 7: PCB Front without Radio Card
- Plate 8: PCB Front with PCMCIA header removed
- Plate 9: PCB Back
- Plate 10: PCB Fitted in enclosure
- Plate 11: Enclosure
- Plate 12: Radio Card Rear Showing Approvals Label

A040 External & Construction Photographs

Document ID	Type	Issue	Date	Project	Product	Page
MPT_TN_0028	TN	1.0	05/25/2001	Touchstone	A040	7 (13)

Plate 6: PCB Front with Radio Card

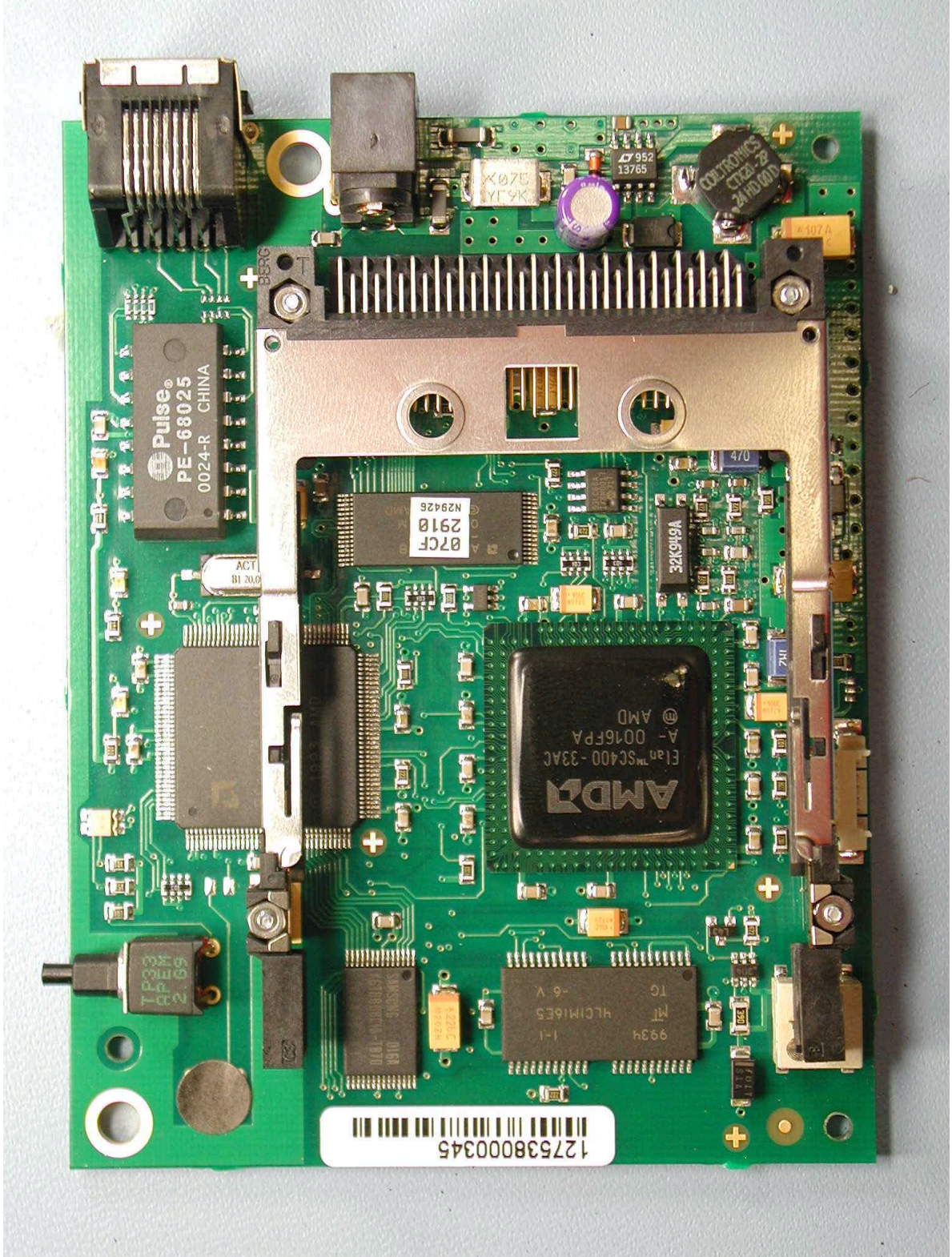




A040 External & Construction Photographs

Document ID	Type	Issue	Date	Project	Product	Page
MPT_TN_0028	TN	1.0	05/25/2001	Touchstone	A040	8 (13)

Plate 7: PCB Front without Radio Card





A040 External & Construction Photographs

Document ID	Type	Issue	Date	Project	Product	Page
MPT_TN_0028	TN	1.0	05/25/2001	Touchstone	A040	9 (13)

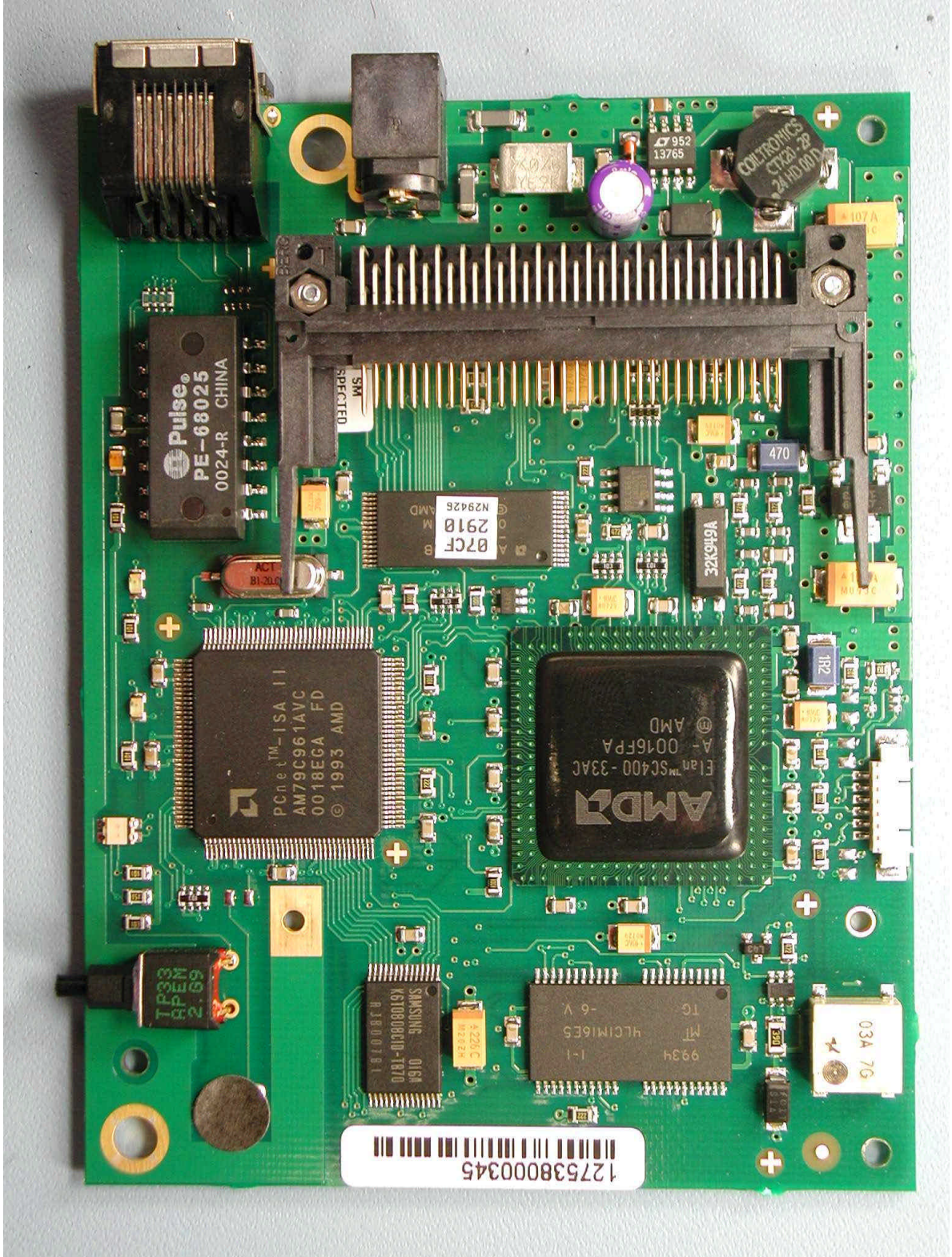


Plate 8: PCB Front PCMCIA header removed



A040 External & Construction Photographs

Document ID	Type	Issue	Date	Project	Product	Page
MPT_TN_0028	TN	1.0	05/25/2001	Touchstone	A040	10 (13)

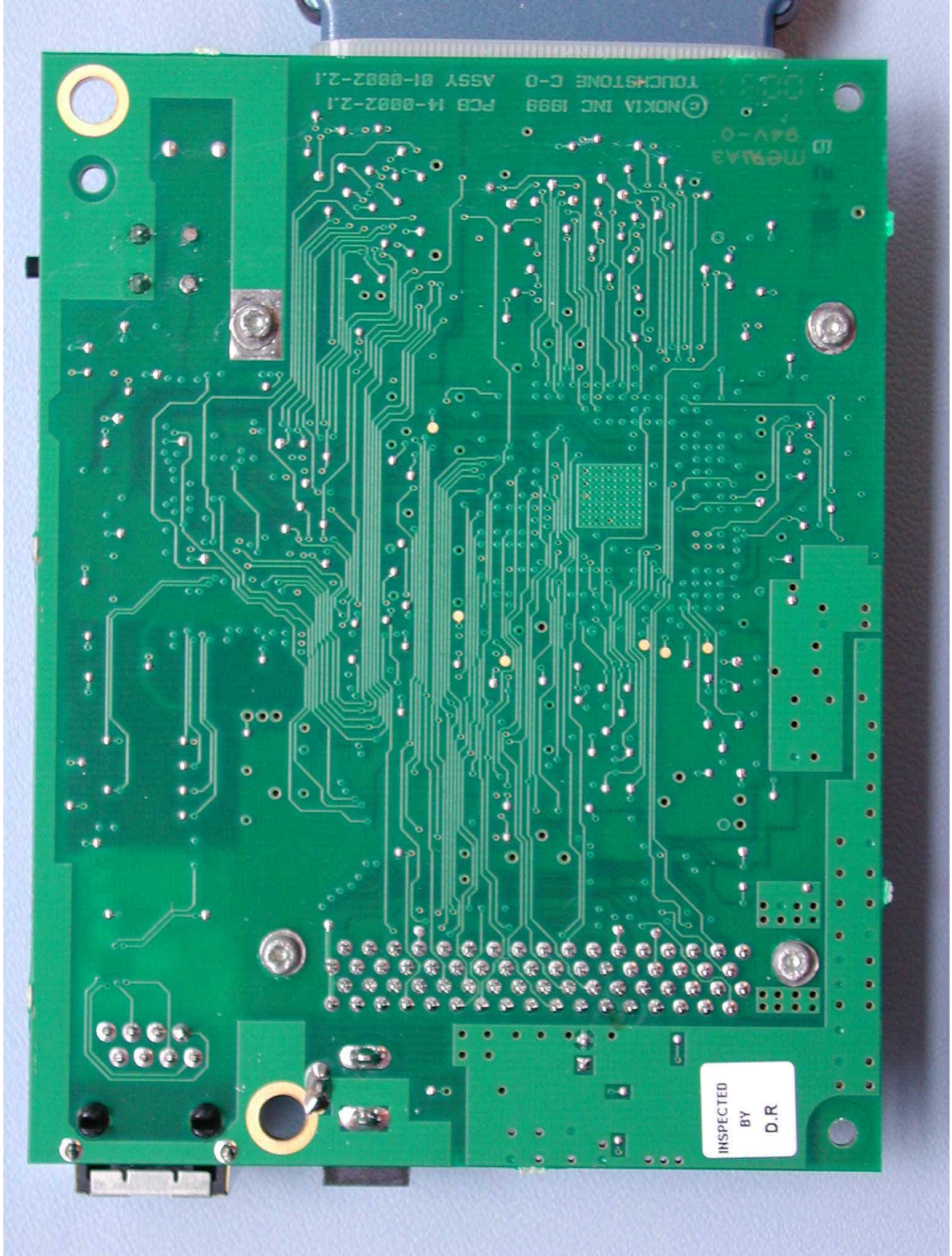


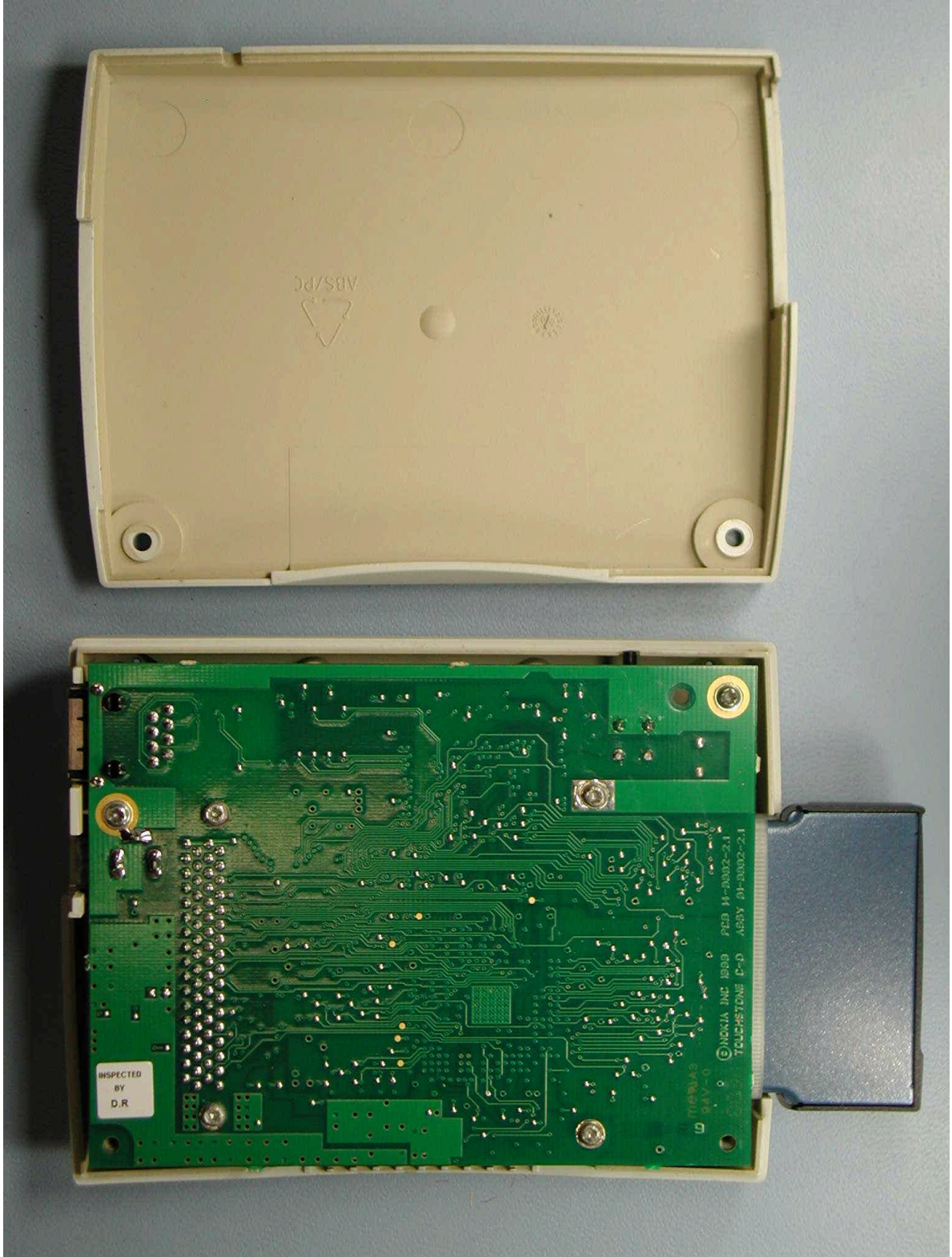
Plate 9: PCB Back



A040 External & Construction Photographs

Document ID	Type	Issue	Date	Project	Product	Page
MPT_TN_0028	TN	1.0	05/25/2001	Touchstone	A040	11 (13)

Plate 10: PCB Fitted in Enclosure



A040 External & Construction Photographs

Document ID	Type	Issue	Date	Project	Product	Page
MPT_TN_0028	TN	1.0	05/25/2001	Touchstone	A040	12 (13)



Plate 11: Enclosure



A040 External & Construction Photographs

Document ID	Type	Issue	Date	Project	Product	Page
MPT_TN_0028	TN	1.0	05/25/2001	Touchstone	A040	13 (13)

Plate 12: Radio Card Back Showing Approvals Label

