

AIR PRIME FCC ID: PNF-PC3220P -- 835MHz. Body SAR

SAM Phantom; Flat Section; Probe:ET3DV6 - SN1677; ConvF(6.40,6.40,6.40)

Med. Parameters 835 MHz Muscle: $\sigma = 0.96$ mho/m $\epsilon_r = 54.0$ $\rho = 1.00$ g/cm³; Antenna Position -- Out; Crest Factor 1.0

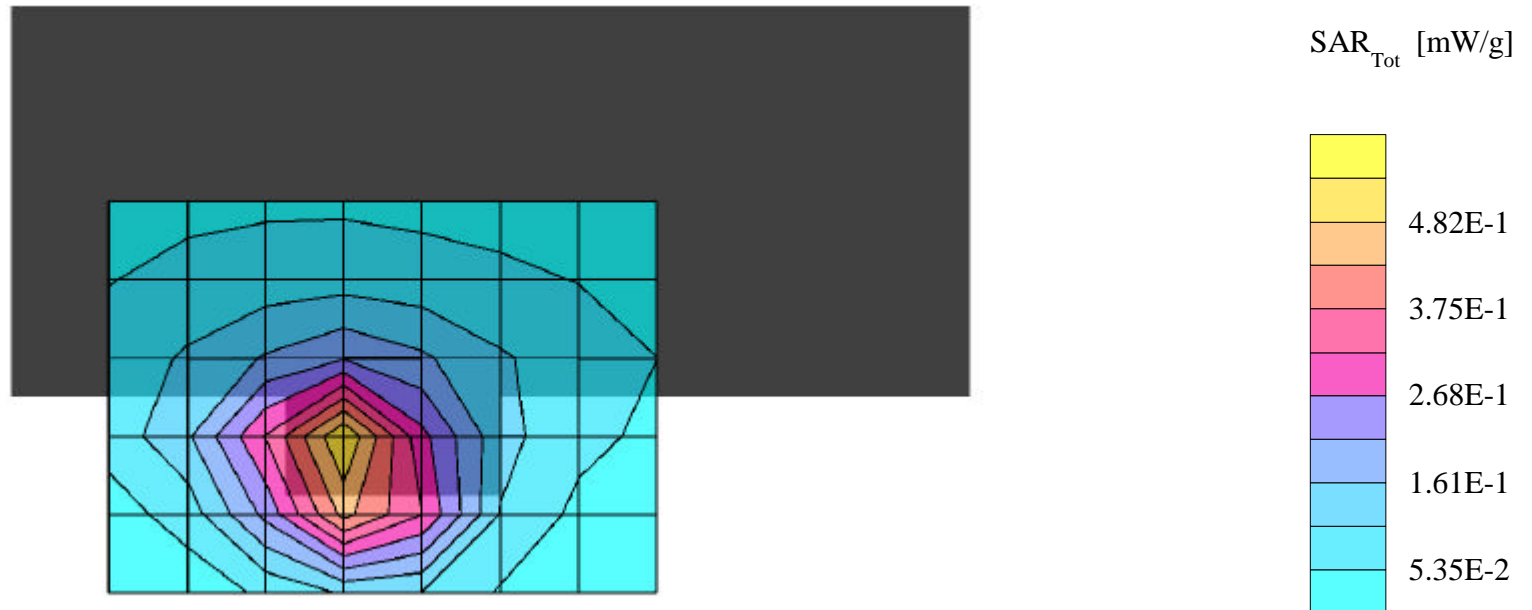
SAR (1g): 0.550 mW/g, SAR (10g): 0.345 mW/g

AIR PRIME PCMCIA wireless modem Model: PC3220; tested with Panasonic Notebook PC

Cellular CDMA Mode, Ch.1013 [824.70MHz]; Ambient Temp. = 18.2°C / Meas. Tissue Temp. = 18.4°C

Conducted Power = 23.5dBm; Laptop position; Spacing = 0cm from bottom of Notebook PC to flat phantom; Antenna up

Test Date -11/27/2002 [FCC/OET Bulletin 65 - Supplement C, July 2001]



AIR PRIME FCC ID: PNF-PC3220P -- 835MHz. Body SAR

SAM Phantom; Flat Section; Probe:ET3DV6 - SN1677; ConvF(6.40,6.40,6.40)

Med. Parameters 835 MHz Muscle: $\sigma = 0.96$ mho/m $\epsilon_r = 54.0$ $\rho = 1.00$ g/cm³; Antenna Position -- Out; Crest Factor 1.0

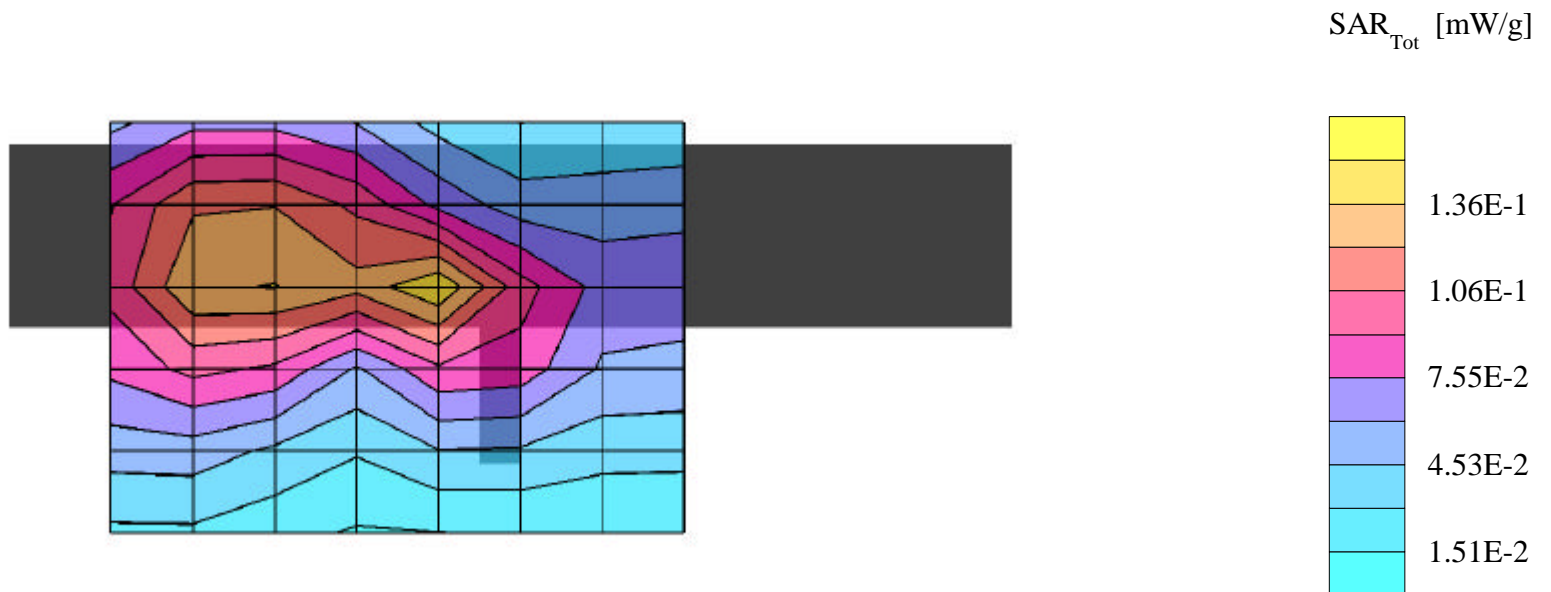
SAR (1g): 0.143 mW/g, SAR (10g): 0.0885 mW/g

AIR PRIME PCMCIA wireless modem Model: PC3220; tested with Panasonic Notebook PC

Cellular CDMA Mode, Ch.0384 [836.52MHz]; Ambient Temp. = 18.2°C / Meas. Tissue Temp. = 18.4°C

Conducted Power = 23.5dBm; Bi-Stand position; Spacing = 1.5cm from EUT to flat phantom; Antenna up

Test Date -11/27/2002 [FCC/OET Bulletin 65 - Supplement C, July 2001]



AIR PRIME FCC ID: PNF-PC3220P -- 1900MHz. Body SAR

SAM Phantom; Flat Section; Probe:ET3DV6 - SN1677; ConvF(4.90,4.90,4.90)

Med. Parameters 1900MHz Muscle: $\sigma = 1.55$ mho/m $\epsilon_r = 54.9$ $\rho = 1.00$ g/cm³; Antenna Position -- In; Crest Factor 1.0

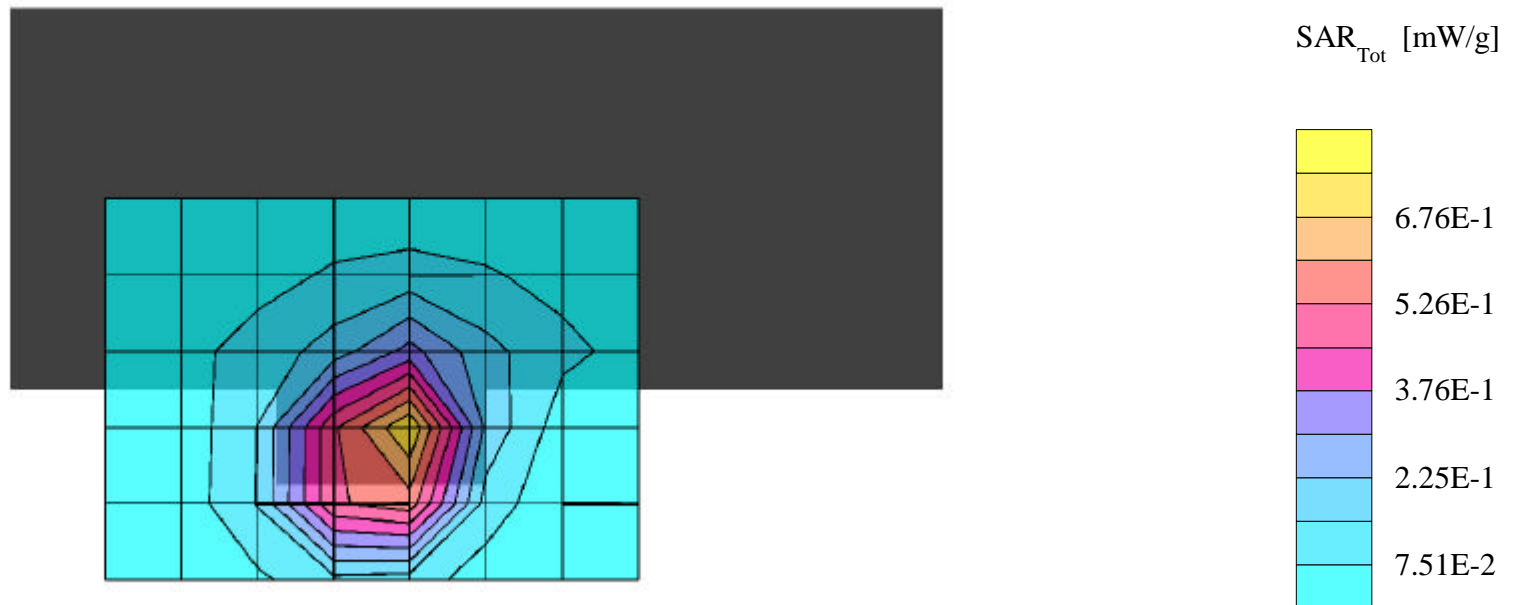
SAR (1g): 0.811 mW/g, SAR (10g): 0.459 mW/g

AIR PRIME PCMCIA wireless modem Model: PC3220; tested with Panasonic Notebook PC

PCS CDMA Mode, Ch.0025 [1851.25MHz]; Ambient Temp. = 18.2°C / Meas. Tissue Temp. = 18.4°C

Conducted Power = 25.0dBm; Laptop position; Spacing = 0.0cm from bottom of Notebook PC to flat phantom; Antenna close

Test Date -11/27/2002 [FCC/OET Bulletin 65 - Supplement C, July 2001]



AIR PRIME FCC ID: PNF-PC3220P -- 1900MHz. Body SAR

SAM Phantom; Flat Section; Probe:ET3DV6 - SN1677; ConvF(4.90,4.90,4.90)

Med. Parameters 1900MHz Muscle: $\sigma = 1.55$ mho/m $\epsilon_r = 54.9$ $\rho = 1.00$ g/cm³; Antenna Position -- In; Crest Factor 1.0

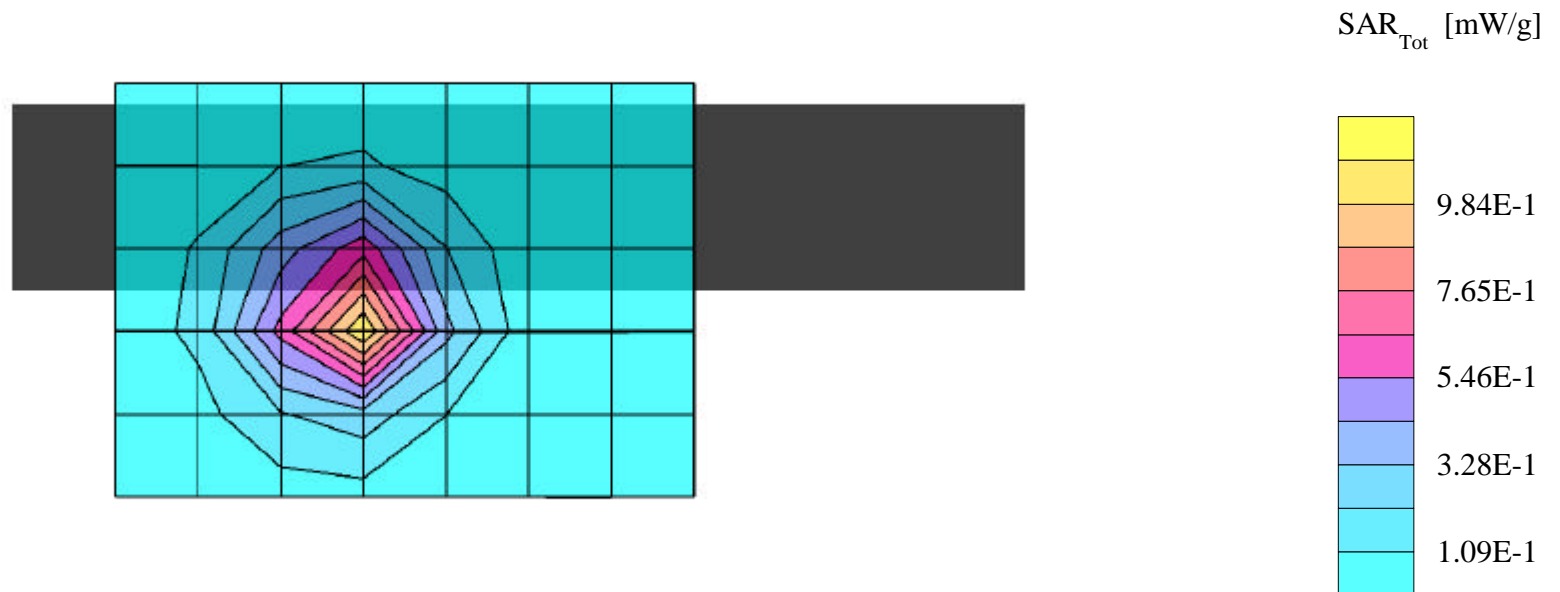
SAR (1g): 1.09 mW/g, SAR (10g): 0.606 mW/g

AIR PRIME PCMCIA wireless modem Model: PC3220; tested with Panasonic Notebook PC

PCS CDMA Mode, Ch.0025 [1851.25MHz]; Ambient Temp. = 18.2°C / Meas. Tissue Temp. = 18.4°C

Conducted Power = 25.0dBm; Bi-Stand position; Spacing = 1.5cm from EUT to flat phantom; Antenna close

Test Date -11/27/2002 [FCC/OET Bulletin 65 - Supplement C, July 2001]



AIR PRIME FCC: PNF-PC3220P -- 835MHz. Body SAR

SAM Phantom; Flat Section; Probe:ET3DV6 - SN1677; ConvF(6.40,6.40,6.40)

Med. Parameters 835 MHz Muscle: $\sigma = 0.96$ mho/m $\epsilon_r = 54.0$ $\rho = 1.00$ g/cm³; Antenna Position -- Out; Crest Factor 1.0

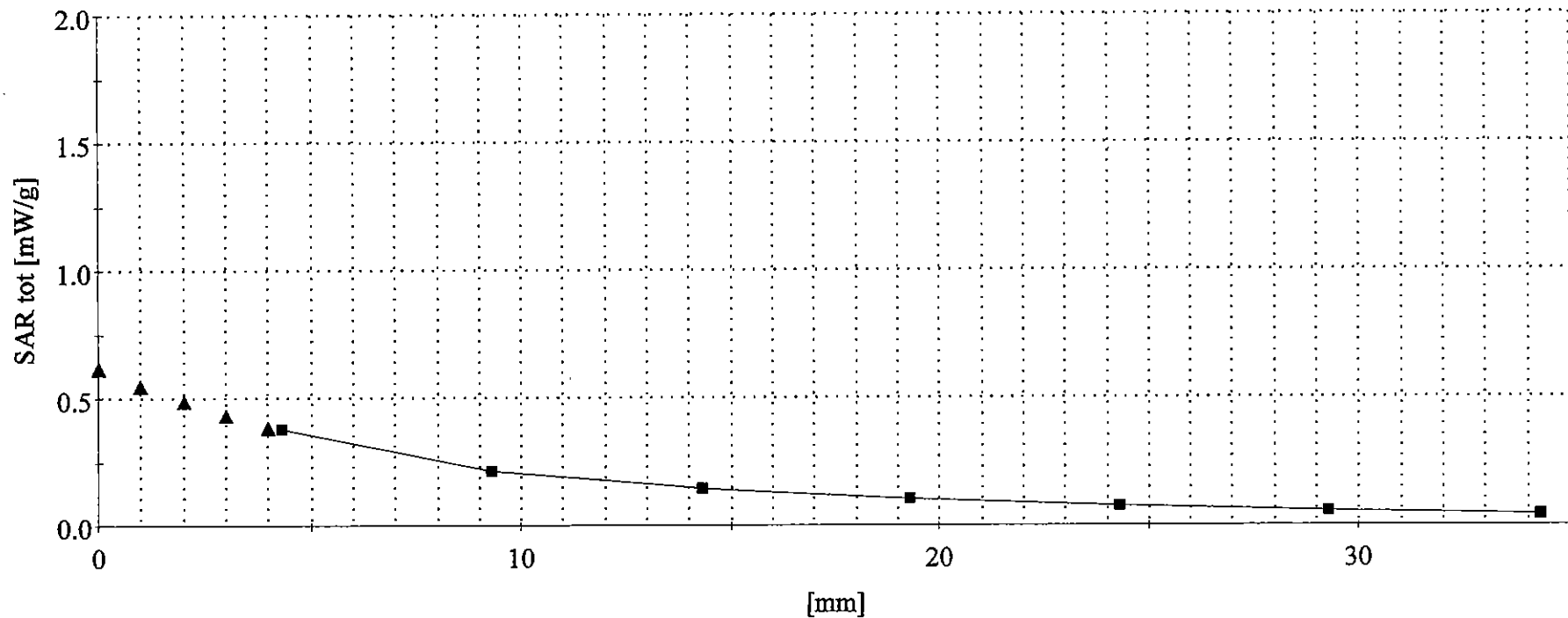
SAR (1g): 0.550 mW/g, SAR (10g): 0.345 mW/g

AIR PRIME PCMCIA wireless modem Model: PC3220; tested with Panasonic Notebook PC

Cellular CDMA Mode, Ch.1013 [824.70MHz]; Ambient Temp. = 18.2°C / Meas. Tissue Temp. = 18.4°C

Conducted Power = 23.5dBm; Laptop position; Spacing = 0cm from bottom of Notebook PC to flat phantom; Antenna up

Test Date -11/27/2002 [FCC/OET Bulletin 65 - Supplement C, July 2001]



AIR PRIME FCC ID: PNF-PC3220P -- 1900MHz.Body SAR

SAM Phantom; Flat Section; Probe:ET3DV6 - SN1677; ConvF(4.90,4.90,4.90)

Med. Parameters 1900MHz Muscle: $\sigma = 1.55$ mho/m $\epsilon_r = 54.9$ $\rho = 1.00$ g/cm³; Antenna Position -- In; Crest Factor 1.0

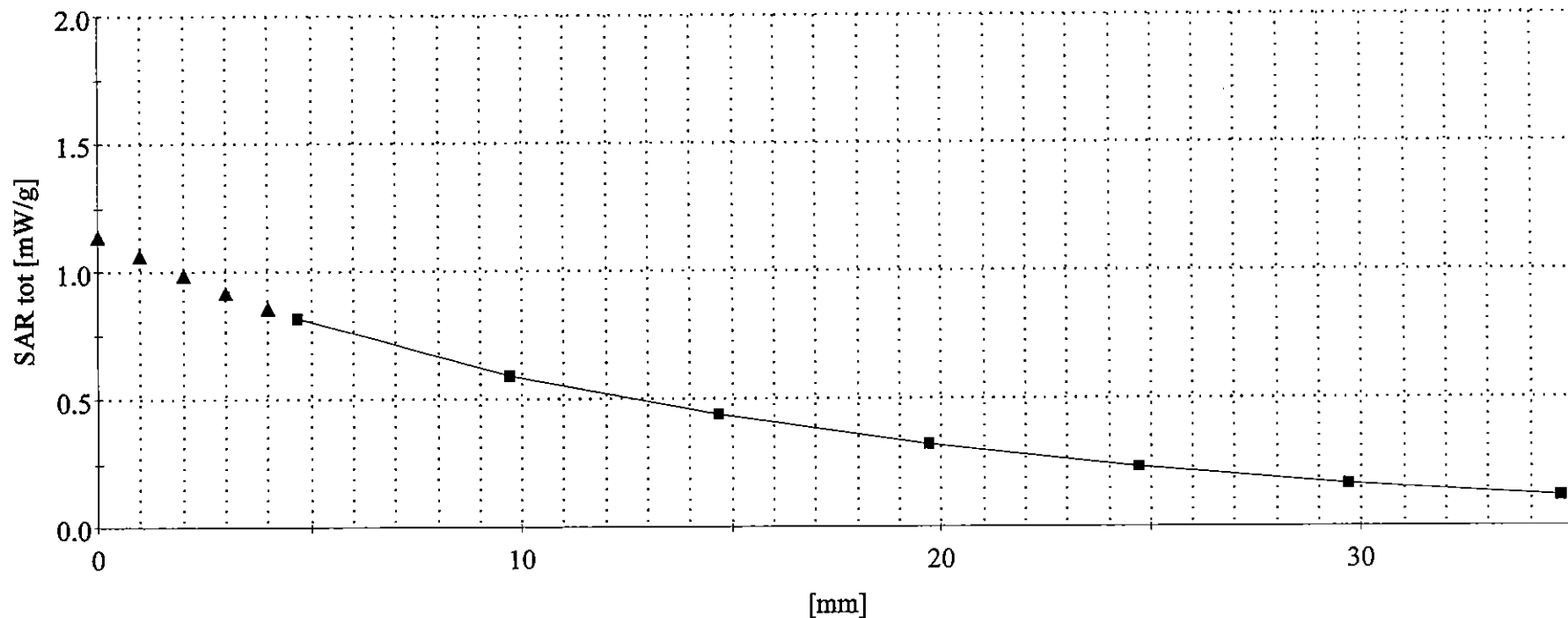
SAR (1g): 1.09 mW/g, SAR (10g): 0.606 mW/g

AIR PRIME PCMCIA wireless modem Model: PC3220; tested with Panasonic Notebook PC

PCS CDMA Mode, Ch.0025 [1851.25MHz]; Ambient Temp. = 18.2°C / Meas. Tissue Temp. = 18.4°C

Conducted Power = 25.0dBm; Bi-Stand position; Spacing = 1.5cm from EUT to flat phantom; Antenna close

Test Date -12/03/2002 [FCC/OET Bulletin 65 - Supplement C, July 2001]



AIR PRIME FCC ID: PNF-PC3220P -- 835MHz. Body SAR

SAM Phantom; Flat Section; Probe:ET3DV6 - SN1677; ConvF(6.40,6.40,6.40)

Med. Parameters 835 MHz Muscle: $\sigma = 0.96 \text{ ho/m}$ $\epsilon_r = 54.0$ $\rho = 1.00 \text{ g/cm}^3$; Antenna Position -- Out; Crest Factor 1.0

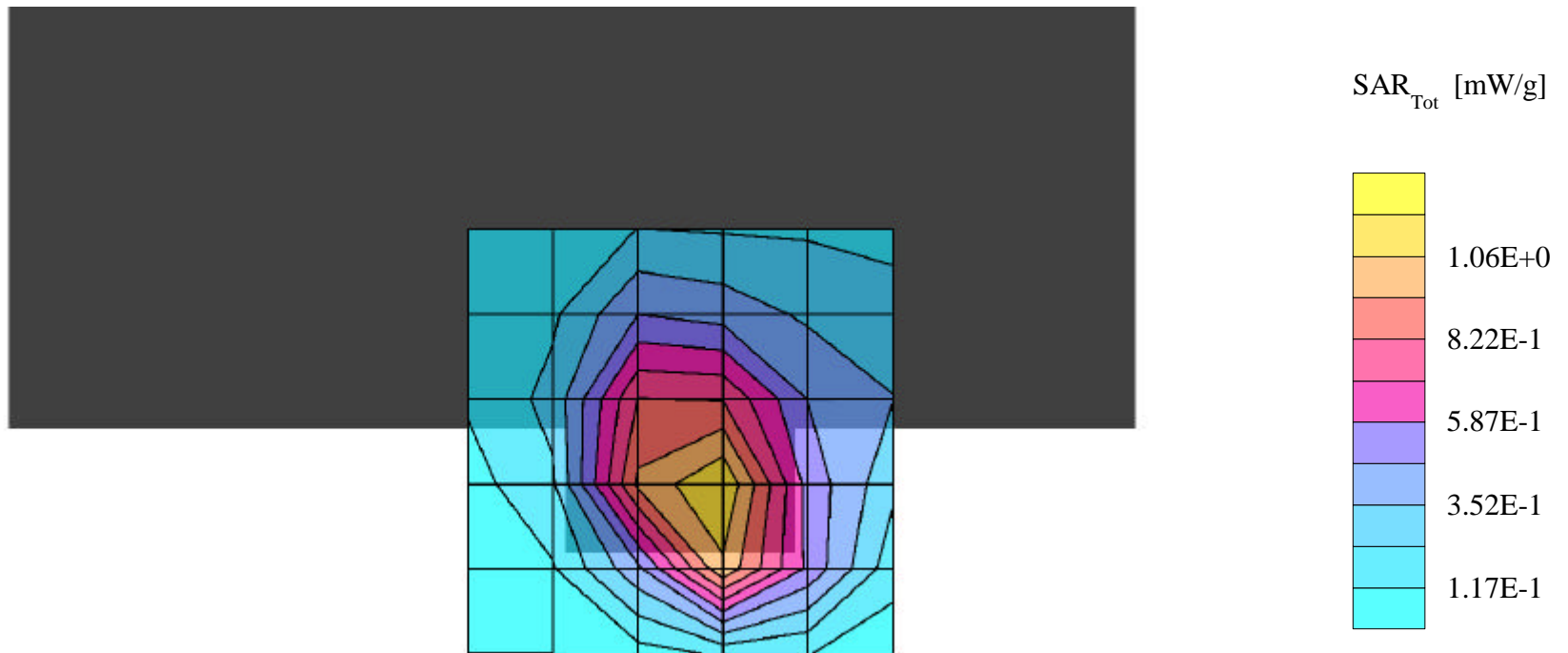
SAR (1g): 1.34 mW/g, SAR (10g): 0.811 mW/g

AIR PRIME PCMCIA wireless modem Model: PC3220; tested with Fujitsu Notebook PC

Cellular CDMA Mode, Ch.0384 [836.52MHz]; Ambient Temp. = 18.4°C / Meas. Tissue Temp. = 17.3°C

Conducted Power = 23.5dBm; Laptop position; Spacing = 0.0cm from bottom of Notebook PC to flat phantom; Antenna up

Test Date -11/25/2002 [FCC/OET Bulletin 65 - Supplement C, July 2001]



AIR PRIME FCC ID: PNF-PC3220P -- 835MHz. Body SAR

SAM Phantom; Flat Section; Probe:ET3DV6 - SN1677; ConvF(6.40,6.40,6.40)

Med. Parameters 835 MHz Muscle: $\sigma = 0.96$ mho/m $\epsilon_r = 54.0$ $\rho = 1.00$ g/cm³; Antenna Position -- Out; Crest Factor 1.0

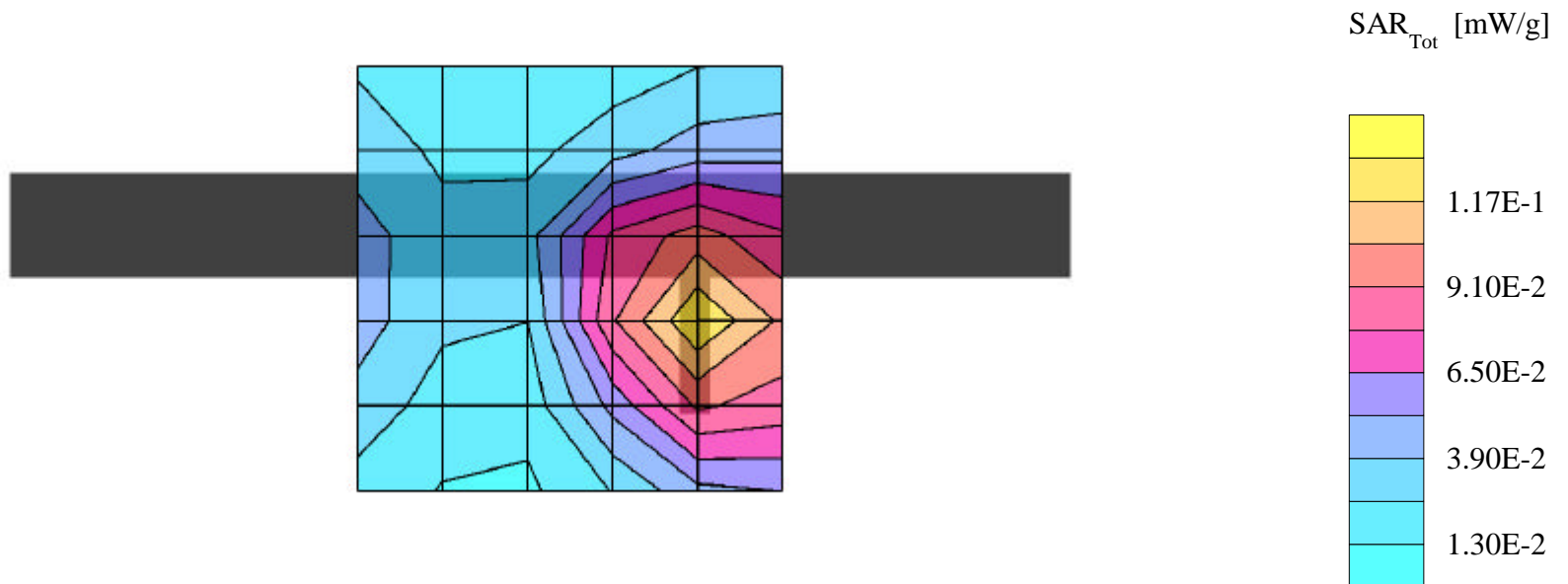
SAR (1g): 0.124 mW/g, SAR (10g): 0.0865 mW/g

AIR PRIME PCMCIA wireless modem Model: PC3220; tested with Fujitsu Notebook PC

Cellular CDMA Mode, Ch.1013 [824.70MHz]; Ambient Temp. = 18.4°C / Meas. Tissue Temp. = 17.3°C

Conducted Power = 23.5dBm; Bi-Stand position; Spacing = 1.5cm from EUT to flat phantom; Antenna up

Test Date -11/25/2002 [FCC/OET Bulletin 65 - Supplement C, July 2001]



AIR PRIME FCC ID: PNF-PC3220P -- 1900MHz. Body SAR

SAM Phantom; Flat Section; Probe:ET3DV6 - SN1677; ConvF(4.90,4.90,4.90)

Med. Parameters 1900 MHz Muscle: $\sigma = 1.55$ mho/m $\epsilon_r = 54.9$ $\rho = 1.00$ g/cm³; Antenna Position -- In; Crest Factor 1.0

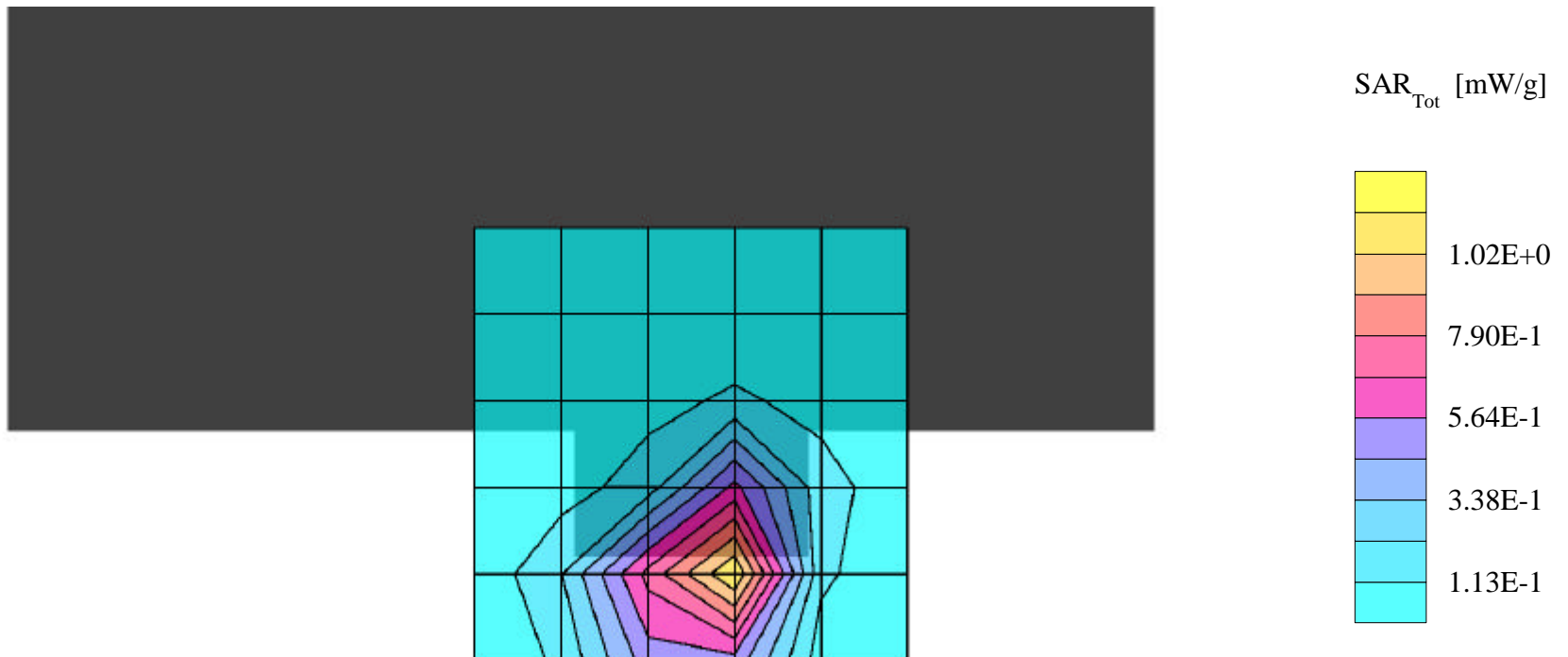
SAR (1g): 1.19 mW/g, SAR (10g): 0.654 mW/g

AIR PRIME PCMCIA wireless modem Model: PC3220; tested with Fujitsu Notebook PC

PCS CDMA Mode, Ch.0025 [1851.25MHz]; Ambient Temp. = 20.0°C / Meas. Tissue Temp. = 18.4°C

Conducted Power = 25.0dBm; Laptop position; Spacing =0.0cm from bottom of Notebook PC to flat phantom; Antenna close

Test Date -11/25/2002 [FCC/OET Bulletin 65 - Supplement C, July 2001]



AIR PRIME FCC ID: PNF-PC3220P -- 1900MHz. Body SAR

SAM Phantom; Flat Section; Probe:ET3DV6 - SN1677; ConvF(4.90,4.90,4.90)

Med. Parameters 1900 MHz Muscle: $\sigma = 1.55$ mho/m $\epsilon_r = 54.9$ $\rho = 1.00$ g/cm³; Antenna Position -- In; Crest Factor 1.0

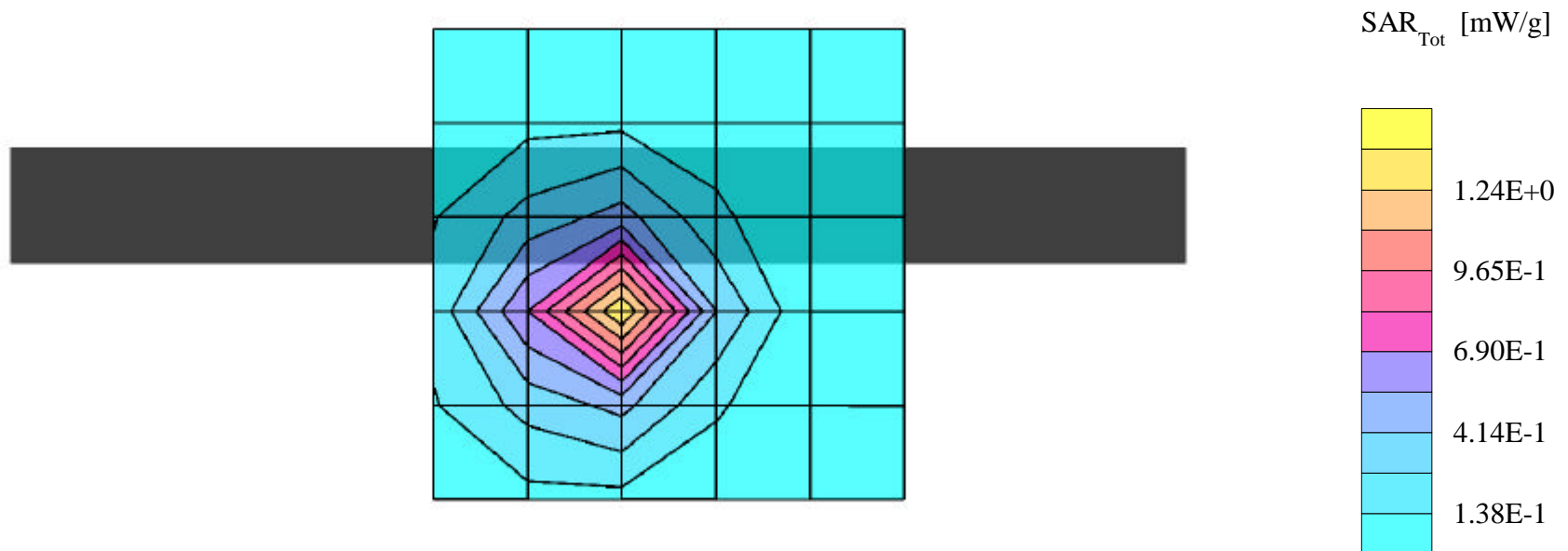
SAR (1g): 1.26 mW/g, SAR (10g): 0.688 mW/g

AIR PRIME PCMCIA wireless modem Model: PC3220; tested with Fujitsu Notebook PC

PCS CDMA Mode, Ch.0025 [1851.25MHz]; Ambient Temp. = 20.0°C / Meas. Tissue Temp. = 18.4°C

Conducted Power = 25.0dBm; Bi-Stand position; Spacing = 1.5cm from EUT to flat phantom; Antenna close

Test Date -11/25/2002 [FCC/OET Bulletin 65 - Supplement C, July 2001]



AIR PRIME FCC: PNF-PC3220P -- 835MHz. Body SAR

SAM Phantom; Flat Section; Probe:ET3DV6 - SN1677; ConvF(6.40,6.40,6.40)

Med. Parameters 835 MHz Muscle: $\sigma = 0.96 \text{ ho/m}$ $\epsilon_r = 54.0$ $\rho = 1.00 \text{ g/cm}^3$; Antenna Position -- Out; Crest Factor 1.0

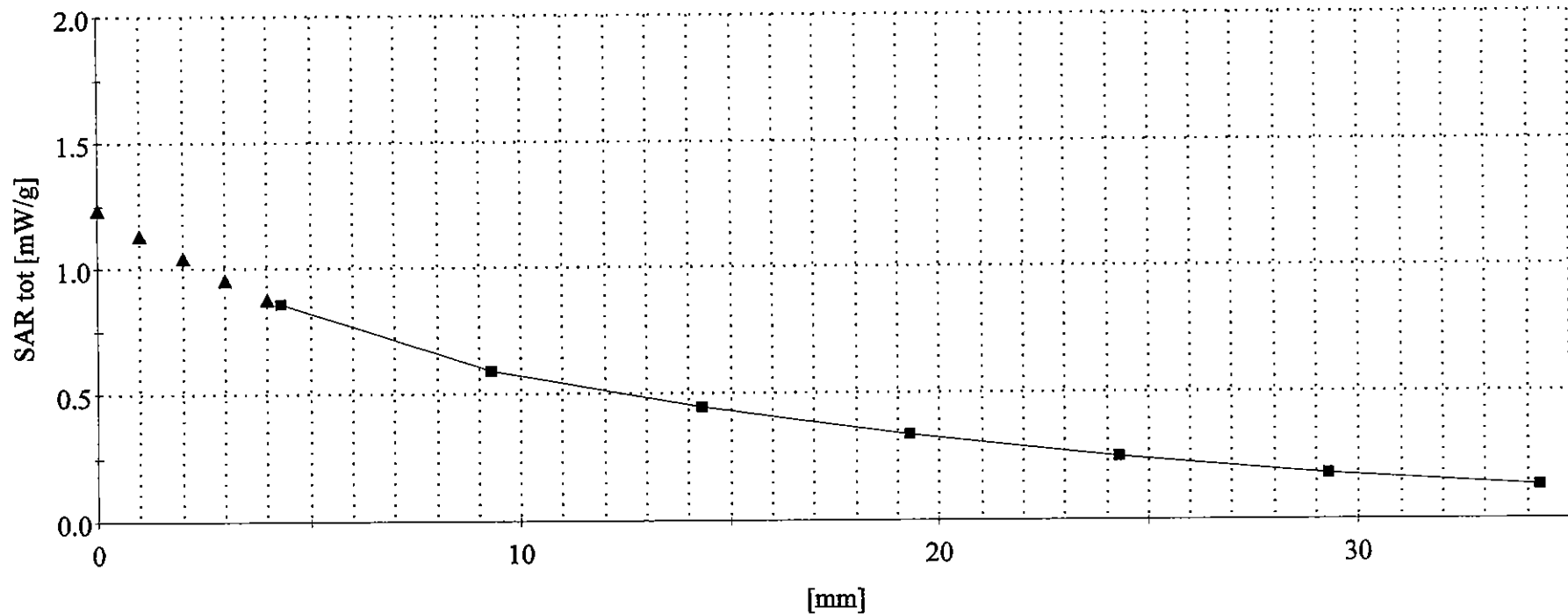
SAR (1g): 1.34 mW/g, SAR (10g): 0.811 mW/g

AIR PRIME PCMCIA wireless modem Model: PC3220; tested with Fujitsu Notebook PC

Cellular CDMA Mode, Ch.0384 [836.52MHz]; Ambient Temp. = 18.4°C / Meas. Tissue Temp. = 17.3°C

Conducted Power = 23.5dBm; Laptop position; Spacing = 0.0cm from bottom of Notebook PC to flat phantom; Antenna up

Test Date -11/25/2002 [FCC/OET Bulletin 65 - Supplement C, July 2001]



AIR PRIME FCC: PNF-PC3220P -- 1900MHz. Body SAR

SAM Phantom; Flat Section; Probe:ET3DV6 - SN1677; ConvF(4.90,4.90,4.90)

Med. Parameters 1900 MHz Muscle: $\sigma = 1.55$ mho/m $\epsilon_r = 54.9$ $\rho = 1.00$ g/cm³; Antenna Position -- In; Crest Factor 1.0

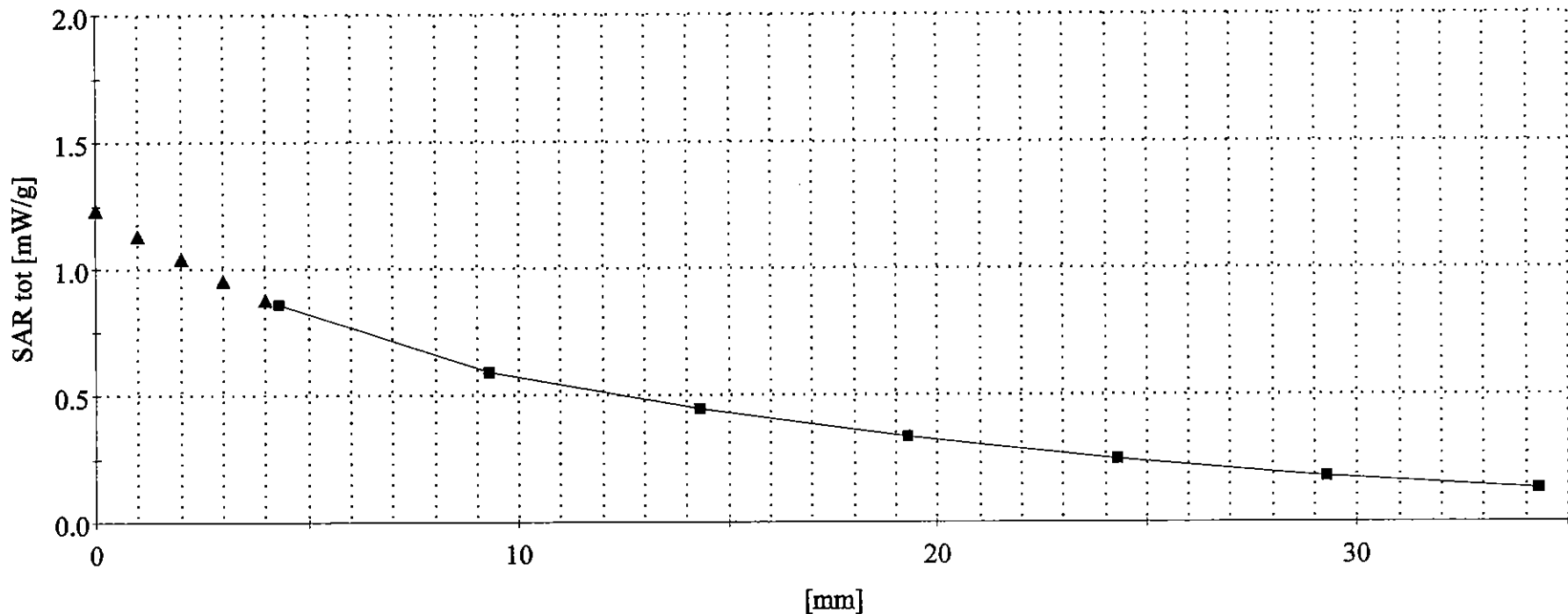
SAR (1g): 1.26 mW/g, SAR (10g): 0.688 mW/g

AIR PRIME PCMCIA wireless modem Model: PC3220; tested with Fujitsu Notebook PC

PCS CDMA Mode, Ch.0025 [1851.25MHz]; Ambient Temp. = 20.0°C / Meas. Tissue Temp. = 18.4°C

Conducted Power = 25.0dBm; Bi-Stand position; Spacing = 1.5cm from EUT to flat phantom; Antenna close

Test Date -11/25/2002 [FCC/OET Bulletin 65 - Supplement C, July 2001]



AIR PRIME FCC ID: PNF-PC3220P -- 835MHz. Body SAR

SAM Phantom; Flat Section; Probe:ET3DV6 - SN1677; ConvF(6.40,6.40,6.40)

Med. Parameters 835 MHz Muscle: $\sigma = 0.96$ mho/m $\epsilon_r = 54.0$ $\rho = 1.00$ g/cm³; Antenna Position -- Out; Crest Factor 1.0

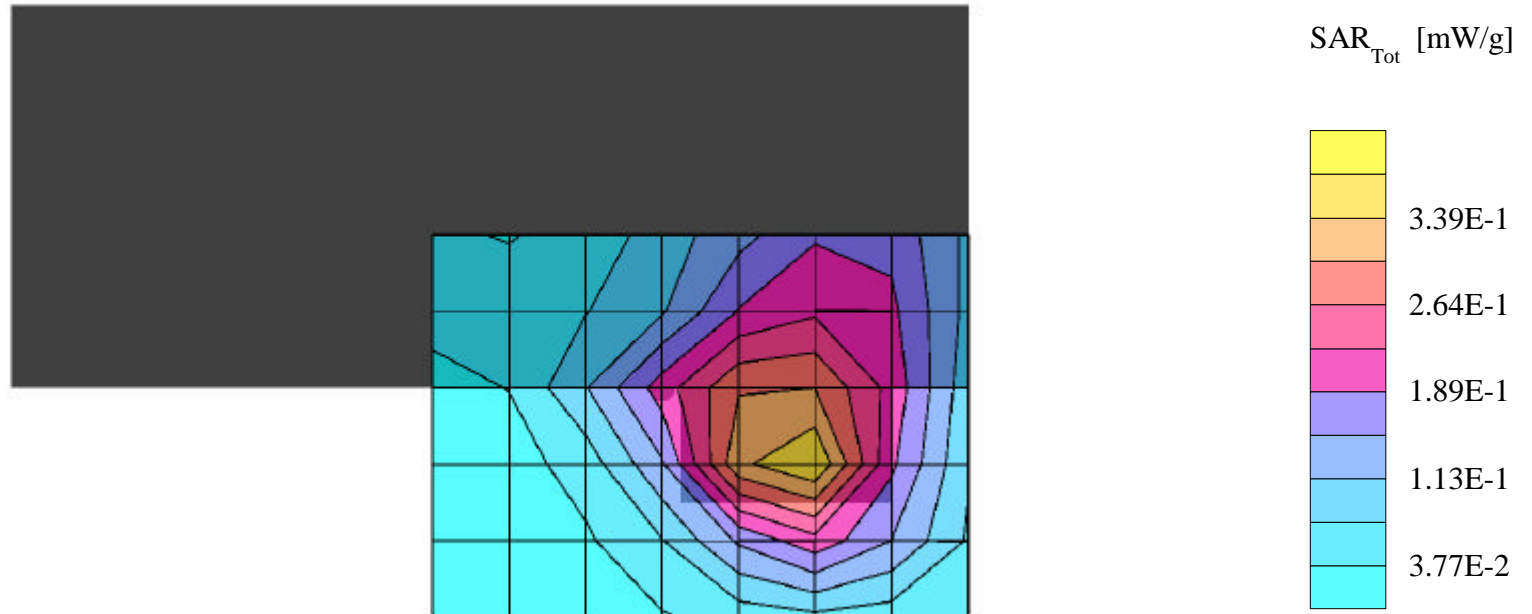
SAR (1g): 0.393 mW/g, SAR (10g): 0.260 mW/g

AIR PRIME PCMCIA wireless modem Model: PC3220; tested with Winbook Notebook PC

Cellular CDMA Mode, Ch.1013 [824.70MHz]; Ambient Temp. = 18.2°C / Meas. Tissue Temp. = 18.4°C

Conducted Power = 23.5dBm; Laptop position; Spacing = 0cm from bottom of Notebook PC to flat phantom; Antenna up

Test Date -11/26/2002 [FCC/OET Bulletin 65 - Supplement C, July 2001]



AIR PRIME FCC ID: PNF-PC3220P -- 835MHz. Body SAR

SAM Phantom; Flat Section; Probe:ET3DV6 - SN1677; ConvF(6.40,6.40,6.40)

Med. Parameters 835 MHz Muscle: $\sigma = 0.96$ mho/m $\epsilon_r = 54.0$ $\rho = 1.00$ g/cm³; Antenna Position -- Out; Crest Factor 1.0

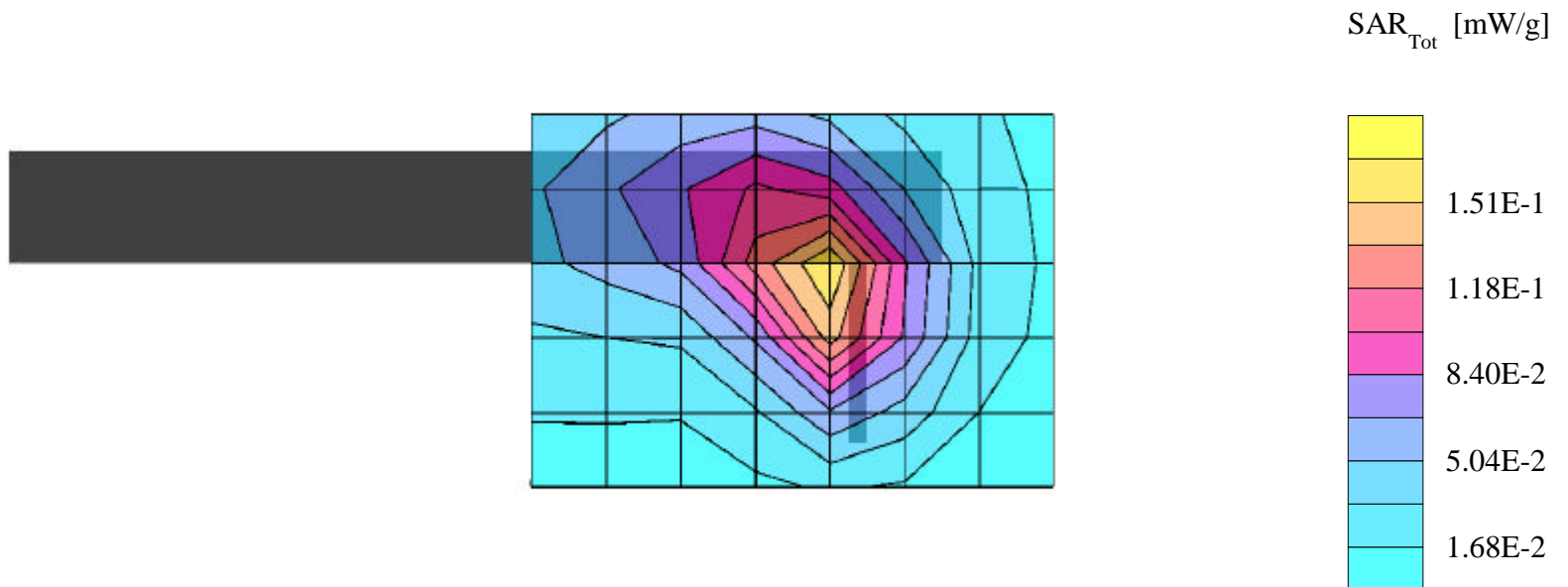
SAR (1g): 0.166 mW/g, SAR (10g): 0.110 mW/g

AIR PRIME PCMCIA wireless modem Model: PC3220; tested with Winbook Notebook PC

Cellular CDMA Mode, Ch.0777 [848.31MHz]; Ambient Temp. = 18.2°C / Meas. Tissue Temp. = 18.4°C

Conducted Power = 23.5dBm; Bi-Stand position; Spacing = 1.5cm from EUT to flat phantom; Antenna up

Test Date -11/26/2002 [FCC/OET Bulletin 65 - Supplement C, July 2001]



AIR PRIME FCC ID: PNF-PC3220P -- 1900MHz. Body SAR

SAM Phantom; Flat Section; Probe:ET3DV6 - SN1677; ConvF(4.90,4.90,4.90)

Med. Parameters 1900 MHz Muscle: $\sigma = 1.55$ mho/m $\epsilon_r = 54.9$ $\rho = 1.00$ g/cm³; Antenna Position -- In; Crest Factor 1.0

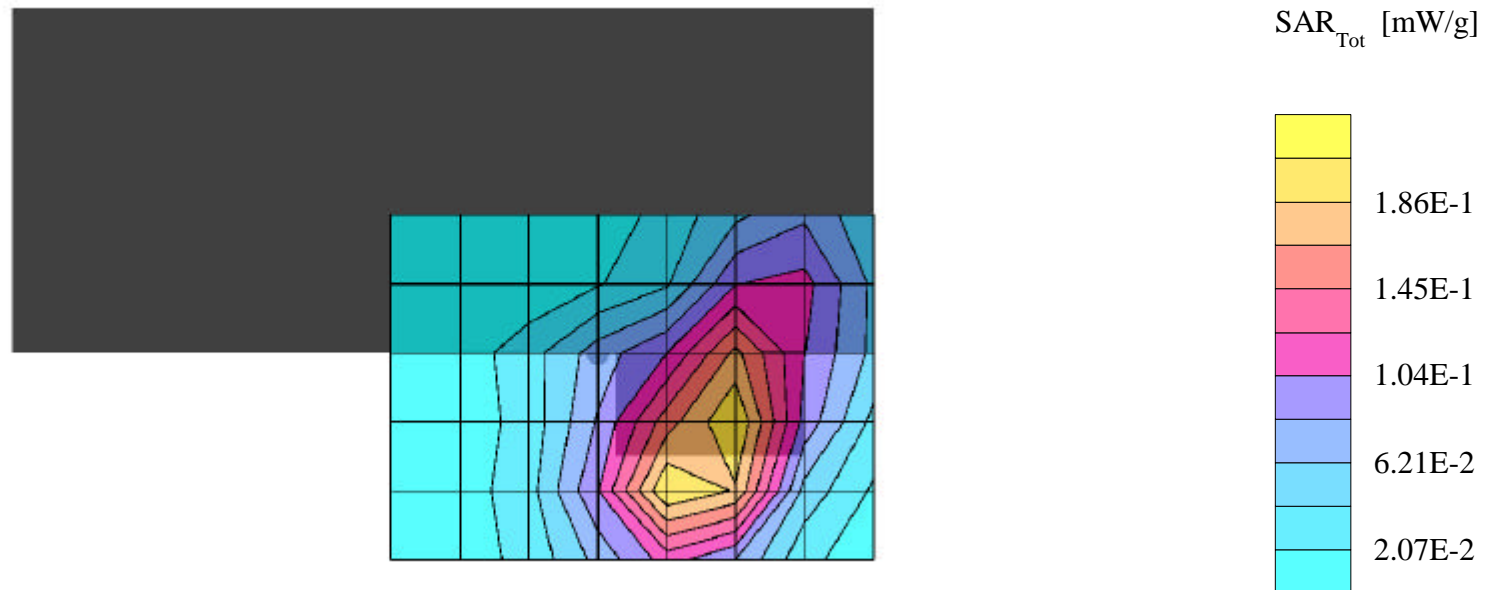
SAR (1g): 0.216 mW/g, SAR (10g): 0.130 mW/g

AIR PRIME PCMCIA wireless modem Model: PC3220; tested with Winbook Notebook PC

PCS CDMA Mode, Ch.0025 [1851.25MHz]; Ambient Temp. = 18.2°C / Meas. Tissue Temp. = 18.4°C

Conducted Power = 25.0dBm; Laptop position; Spacing = 0cm from bottom of Notebook PC to flat phantom; Antenna close

Test Date -11/26/2002 [FCC/OET Bulletin 65 - Supplement C, July 2001]



AIR PRIME FCC ID: PNF-PC3220P -- 1900MHz. Body SAR

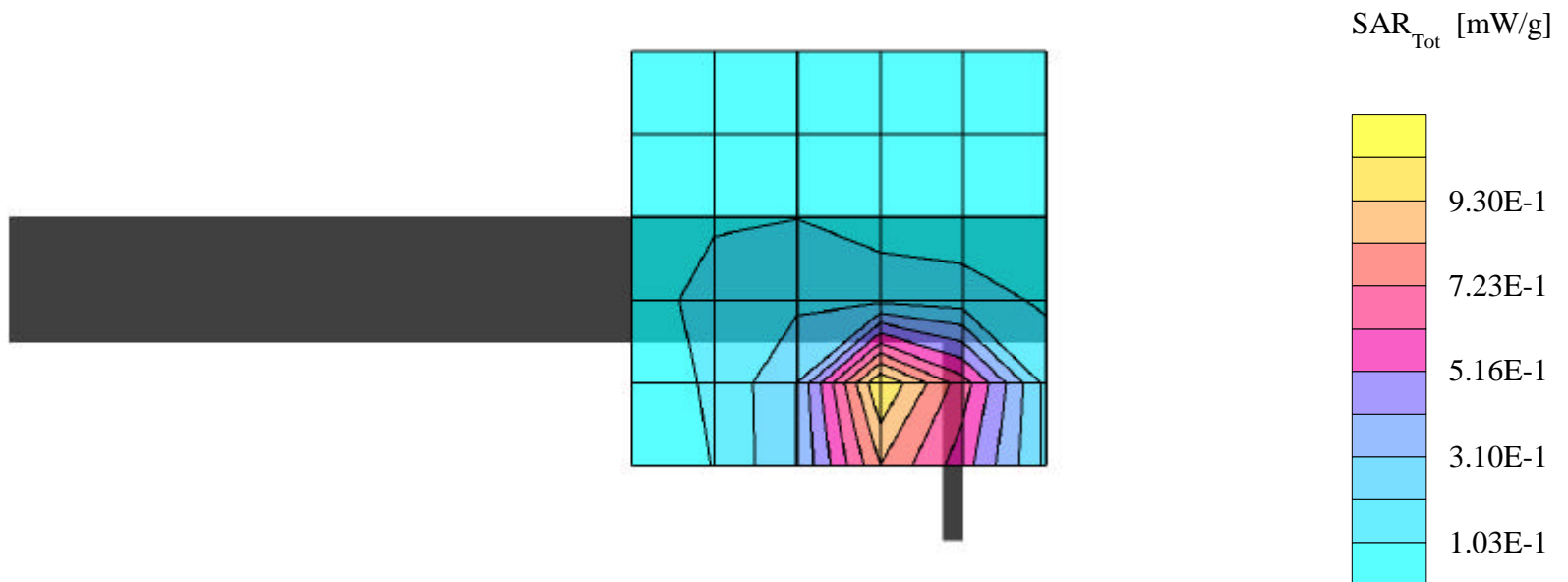
SAM Phantom; Flat Section; Probe:ET3DV6 - SN1677; ConvF(4.90,4.90,4.90)

Med. Parameters 1900 MHz Muscle: $\sigma = 1.55$ mho/m $\epsilon_r = 54.9$ $\rho = 1.00$ g/cm³; Antenna Position -- Out; Crest Factor 1.0

SAR (1g): 1.17 mW/g, SAR (10g): 0.646 mW/g

AIR PRIME PCMCIA wireless modem Model: PC3220; tested with Winbook Notebook PC

PCS CDMA Mode, Ch.0025 [1851.25MHz]; Ambient Temp. = 20.0°C / Meas. Tissue Temp. = 18.4°C
Conducted Power = 25.0dBm; Bi-Stand position; Spacing = 1.5cm from EUT to flat phantom; Antenna up
Test Date -11/26/2002 [FCC/OET Bulletin 65 - Supplement C, July 2001]



AIR PRIME FCC: PNF-PC3220P -- 835MHz. Body SAR

SAM Phantom; Flat Section; Probe:ET3DV6 - SN1677; ConvF(6.40,6.40,6.40)

Med. Parameters 835 MHz Muscle: $\sigma = 0.96$ mho/m $\epsilon_r = 54.0$ $\rho = 1.00$ g/cm³; Antenna Position -- Out; Crest Factor 1.0

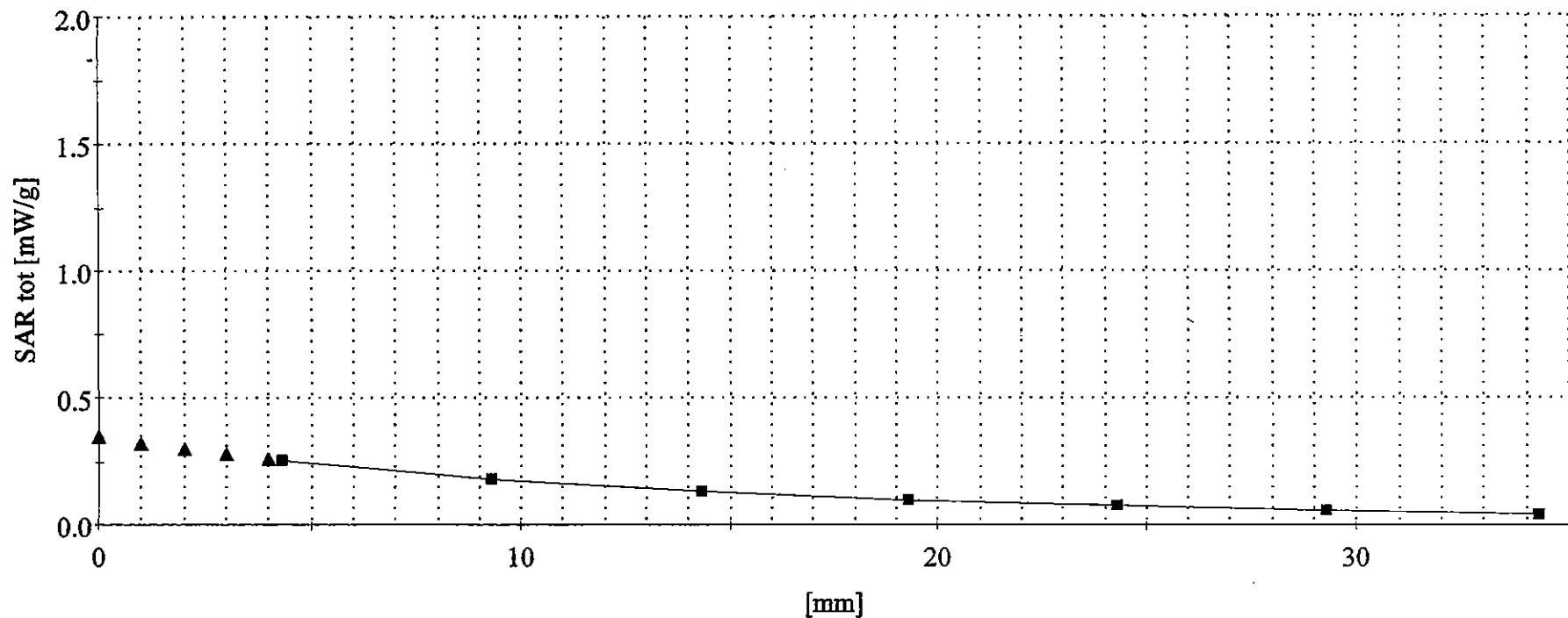
SAR (1g): 0.393 mW/g, SAR (10g): 0.260 mW/g

AIR PRIME PCMCIA wireless modem Model: PC3220; tested with Winbook Notebook PC

Cellular CDMA Mode, Ch.1013 [824.70MHz]; Ambient Temp. = 18.2°C / Meas. Tissue Temp. = 18.4°C

Conducted Power = 23.5dBm; Laptop position; Spacing = 0cm from bottom of Notebook PC to flat phantom; Antenna up

Test Date -11/26/2002 [FCC/OET Bulletin 65 - Supplement C, July 2001]



AIR PRIME FCC: PNF-PC3220P -- 1900MHz. Body SAR

SAM Phantom; Flat Section; Probe:ET3DV6 - SN1677; ConvF(4.90,4.90,4.90)

Med. Parameters 1900 MHz Muscle: $\sigma = 1.55$ mho/m $\epsilon_r = 54.9$ $\rho = 1.00$ g/cm³; Antenna Position -- Out; Crest Factor 1.0

SAR (1g): 1.17 mW/g, SAR (10g): 0.646 mW/g

AIR PRIME PCMCIA wireless modem Model: PC3220; tested with Winbook Notebook PC

PCS CDMA Mode, Ch.0025 [1851.25MHz]; Ambient Temp. = 20.0°C / Meas. Tissue Temp. = 18.4°C

Conducted Power = 25.0dBm; Bi-Stand position; Spacing = 1.5cm from EUT to flat phantom; Antenna up

Test Date -11/26/2002 [FCC/OET Bulletin 65 - Supplement C, July 2001]

