

System Validation - D1800V2 S/N: 294

(Antenna input power: 250 mW)

SAM; Flat

Probe: ET3DV6 - SN1578; ConvF(5.50,5.50,5.50); Crest factor: 1.0

Head 1800 MHz: $\sigma = 1.43$ mho/m $\epsilon_r = 40.3$ $\rho = 1.00$ g/cm³

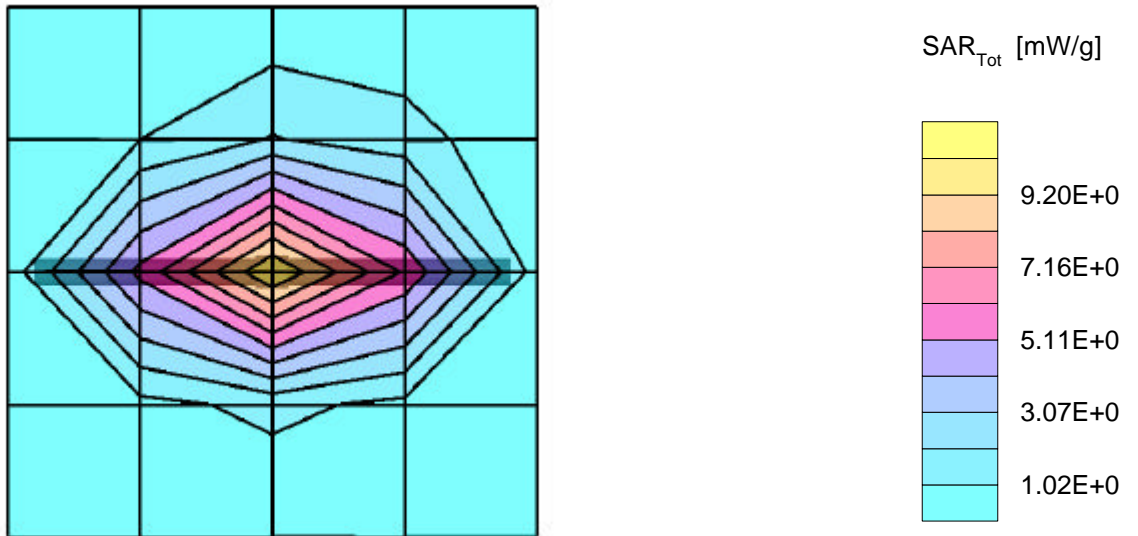
Cube 5x5x7: Peak: 17.2 mW/g, SAR (1g): 9.32 mW/g, SAR (10g): 4.90 mW/g, (Worst-case extrapolation)

Penetration depth: 8.4 (8.0, 9.3) [mm]

Powerdrift: -0.03 dB

Ambient Temperature (degree C): 23

Liquid Temperature (degree C): 21.3

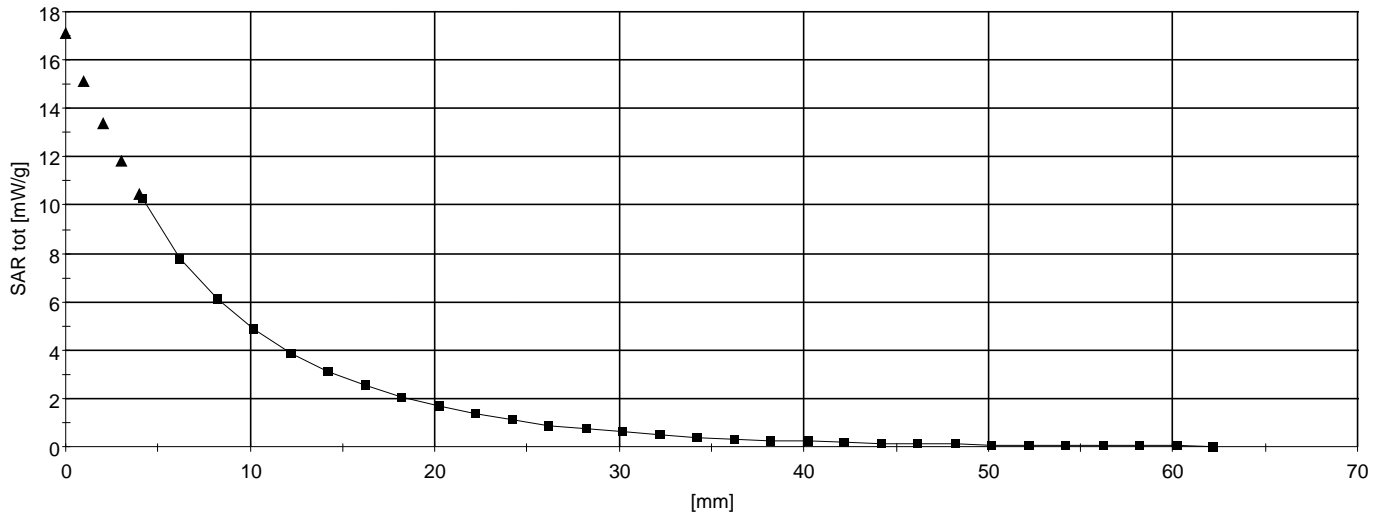


System Validation - D1800V2 S/N: 294

(Antenna input power: 250 mW)

SAM;
Probe: ET3DV6 - SN1578; ConvF(5.50,5.50,5.50); Crest factor: 1.0
Head 1800 MHz: $\sigma = 1.43$ mho/m $\epsilon_r = 40.3$ $\rho = 1.00$ g/cm³
: , , ()
Penetration depth: 8.4 (8.0, 9.3) [mm]

Ambient Temperature (degree C): 23
Liquid Temperature (degree C): 21.3



System Validation - D1800V2 S/N: 294

(Antenna input power: 250 mW)

SAM; Flat

Probe: ET3DV6 - SN1578; ConvF(5.50,5.50,5.50); Crest factor: 1.0

Head 1800 MHz: $\sigma = 1.40$ mho/m $\epsilon_r = 39.5$ $\rho = 1.00$ g/cm³

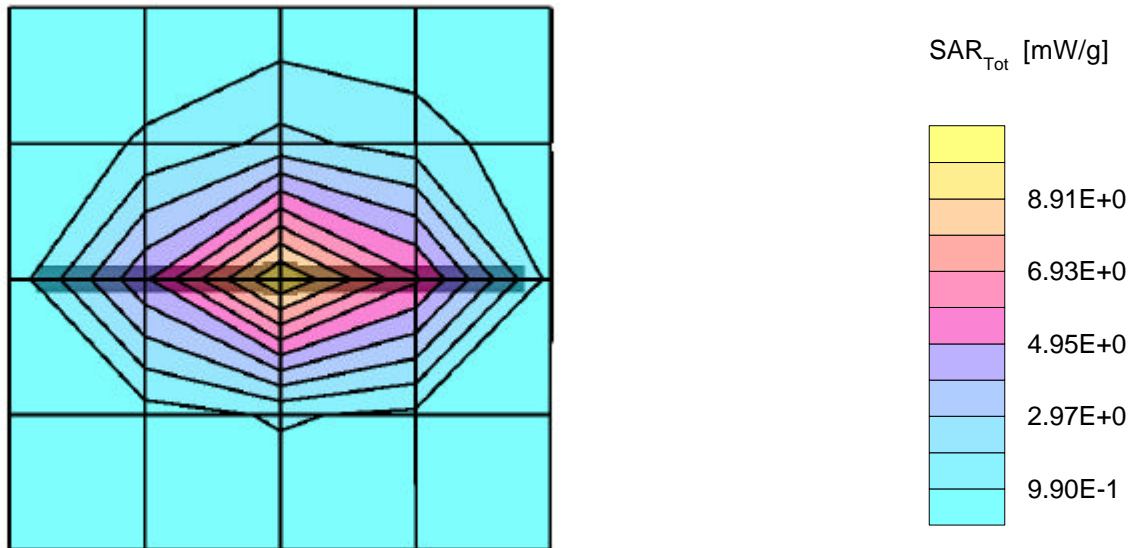
Cube 5x5x7: Peak: 17.0 mW/g, SAR (1g): 9.25 mW/g, SAR (10g): 4.86 mW/g, (Worst-case extrapolation)

Penetration depth: 8.5 (8.0, 9.3) [mm]

Powerdrift: 0.07 dB

Ambient Temperature (degree C): 23.0

Liquid Temperature (degree C): 21.2



System Validation - D1800V2 S/N: 294

(Antenna input power: 250 mW)

SAM;
Probe: ET3DV6 - SN1578; ConvF(5.50,5.50,5.50); Crest factor: 1.0
Head 1800 MHz: $\sigma = 1.40$ mho/m $\epsilon_r = 39.5$ $\rho = 1.00$ g/cm³
: , , ()
Penetration depth: 8.4 (8.0, 9.3) [mm]

Ambient Temperature (degree C): 23.0
Liquid Temperature (degree C): 21.2

