



# **SAR Evaluation Report**

in accordance with the requirements of  
FCC Report and Order: ET Docket 93-62, and OET Bulletin 65 Supplement C

for

**WIRELESS PCMCIA CDMA DATA MODEM**

**MODEL: PC3200**

**FCC ID: PNF-PC3200P**

**JULY 12, 2002**

**REPORT NO: 02U1373-2**

*Prepared for*

**AIRPRIME INC.**

**5201 GREAT AMERICA PKWY. STE. 432  
SANTA CLARA, CA 95054, USA**

*Prepared by*

**COMPLIANCE CERTIFICATION SERVICES**

**561F MONTEREY ROAD,  
MORGAN HILL, CA 95037, USA**

**TEL: (408) 463-0885**



## CERTIFICATE OF COMPLIANCE (SAR EVALUATION)

Dates of Tests: June 27 & July 11, 2002

Report No: 02U1373-2

|                           |   |
|---------------------------|---|
| <b>APPLICANT:</b>         | AirPrime Inc<br>5201 Great America Pkwy. Ste. 432<br>Santa Clara, CA 95054, USA |
| <b>MODEL:</b>             | PC3200  |
| <b>FCC ID:</b>            | PNF-PC3200P   |
| <b>DEVICE CATEGORY:</b>   | PORTABLE DEVICES  |
| <b>EXPOSURE CATEGORY:</b> | GENERAL POPULATION/UNCONTROLLED EXPOSURE  |

**Test Sample is a:** Production unit  
**Operating mode:** CDMA  
**Tx Frequency:** 1851.25 – 1908.75 MHz  
**Rx Frequency:** 1931.25 – 1988.75 MHz  
**Max. Output Power (Conducted):** 24.48dBm (1851.25MHz)  
**Max. SAR (1g):** 0.853mW/g (1851.25MHz)  
**Separation distance:** 2.5 cm  
**Application Type:** Certification  
**FCC Rule Part(s):** 24 (E)



This wireless portable device has been shown to be capable of compliance for localized specific absorption rate (SAR) for uncontrolled environment/general population exposure limits specified in ANSI/IEEE Std. C95.1-1992 and had been tested in accordance with the measurement procedures specified in FCC OET 65 Supplement C (released on 6/29/2001 see Test Report).

I attest to the accuracy of data. All measurements reported herein were performed by me or were made under my supervision and are correct to the best of my knowledge and belief. I assume full responsibility for the completeness of these measurements and vouch for the qualifications of all persons taking them.



Steve Cheng  
EMC Engineering Manager

## TABLE OF CONTENT

|            |  |           |
|------------|--|-----------|
| <b>1.</b>  | <b>EUT DESCRIPTION.....</b>  | <b>4</b>  |
| <b>2.</b>  | <b>MEASUREMENT RESULTS .....</b>                                   | <b>5</b>  |
|            | 2.1. SETUP PHOTOS .....  | 8         |
| <b>3.</b>  | <b>REQUIREMENTS FOR COMPLIANCE TESTING DEFINED BY THE FCC.....</b> | <b>10</b> |
| <b>4.</b>  | <b>DOSIMETRIC ASSESSMENT SETUP .....</b>                           | <b>10</b> |
|            | 4.1. MEASUREMENT SYSTEM DIAGRAM .....                              | 11        |
|            | 4.2. SYSTEM COMPONENTS .....                                       | 12        |
| <b>5.</b>  | <b>MEASUREMENT UNCERTAINTY .....</b>                               | <b>16</b> |
| <b>6.</b>  | <b>EUT TUNE-UP PROCEDURE.....</b>                                  | <b>16</b> |
| <b>7.</b>  | <b>EVALUATION PROCEDURE .....</b>                                  | <b>17</b> |
|            | 7.1. SYSTEM VALIDATION .....                                       | 18        |
|            | 7.2. SAR EVALUATION PROCEDURE .....                                | 18        |
|            | 7.3. EXPOSURE LIMIT .....  | 19        |
| <b>8.</b>  | <b>EUT PHOTOS.....</b>   | <b>20</b> |
| <b>9.</b>  | <b>EQUIPMENTS LIST &amp; CALIBRATION STATUS.....</b>               | <b>21</b> |
| <b>10.</b> | <b>REFERENCES.....</b>   | <b>22</b> |
| <b>11.</b> | <b>ATTACHMENT .....</b>  | <b>23</b> |

## 1. EUT DESCRIPTION

|                           |   |
|---------------------------|---|
| <b>APPLICANT:</b>         | AirPrime Inc<br>5201 Great America Pkwy. Ste. 432<br>Santa Clara, CA 95054, USA |
| <b>MODEL:</b>             | PC3200  |
| <b>FCC ID:</b>            | PNF-PC3200P   |
| <b>DEVICE CATEGORY:</b>   | PORTABLE DEVICES  |
| <b>EXPOSURE CATEGORY:</b> | GENERAL POPULATION/UNCONTROLLED EXPOSURE  |

|                                       |                        |
|---------------------------------------|------------------------|
| <b>Test Sample is a:</b>              | Production unit        |
| <b>Operating mode:</b>                | CDMA                   |
| <b>Tx Frequency:</b>                  | 1851.25 – 1908.75 MHz  |
| <b>Rx Frequency:</b>                  | 1931.25 – 1988.75 MHz  |
| <b>Max. Output Power (Conducted):</b> | 24.48dBm (1851.25MHz)  |
| <b>Max. SAR (1g):</b>                 | 0.853mW/g (1851.25MHz) |
| <b>Application Type:</b>              | Certification          |
| <b>Separation distance:</b>           | 2.5 cm                 |
| <b>FCC Rule Part(s):</b>              | 24 (E)                 |
| <b>Antenna Type:</b>                  | Dipole                 |
| <b>Antenna Dimensions:</b>            | 27 mm x 17 mm (L x W)  |
| <b>Battery option:</b>                | N/A                    |



- <sup>1</sup> Specific Absorption Rate (SAR) is a measure of the rate of energy absorption due to exposure to an RF transmitting source (wireless portable device).
- <sup>2</sup> IEEE/ANSI Std. C95.1-1992 limits are used to determine compliance with FCC ET Docket 93-62.

## 2. MEASUREMENT RESULTS

To ensure that the DUT could meet the SAR limit under typical usage with different computers, 3 popular laptops (Toshiba, IBM and Fujitsu) have been selected to facilitate the test. One of the laptop, Toshiba, had been thoroughly tested for all the configurations and then the worst-case SAR configuration found was repeated on the other two PCs to ensure that the variation amount the different model or brand will not exceed the limit.

Measured date: July 11, 2002

| LIQUID VERIFY   |         |                       |              |                       |          |                                 |               |              |
|---|---------|-----------------------|--------------|-----------------------|----------|---------------------------------|---------------|--------------|
| Ambient Conditions - Ambient temperature: <u>23</u> °C; Relative Humidity: <u>63</u> %            |         |                       |              |                       |          |                                 |               |              |
| Liquid  |         | Temp. [°C]            | Parameters   | Target Value          | Measured | Deviation [%]                   | Limit [%]     |              |
| <b>Muscle<br/>1900 MHz</b>  |         | 21.8                  | $\epsilon_r$ | 53.3                  | 51.59    | -3.20                           | ±5            |              |
|   |         |                       | $\sigma$     | 1.52                  | 1.486    | -2.24                           | ±5            |              |
| SAR MEASUREMENT   |         |                       |              |                       |          |                                 |               |              |
| Model: <u>PC3200</u> with laptop ( <b>IBM</b> ); Modulation: <u>CDMA</u> ; Crest factor: <u>1</u> |         |                       |              |                       |          | Depth of liquid: <u>15.1</u> cm |               |              |
| Phantom Section: <u>Flat (Body)</u> position (See EUT set-up configuration 1)                     |         |                       |              |                       |          |                                 |               |              |
| Frequency   |         | EUT Set-up conditions |              | Conducted power [dBm] |          | Liquid Temp [°C]                | SAR (W/kg)    | Limit (W/kg) |
| Channel   | MHz     | Antenna               | Sep. [mm]    | Before                | After    |                                 |               |              |
| L (25)  | 1851.25 | Vertical              | 25           | 24.47                 | 24.45    | 21.8                            | <b>0.853</b>  | 1.6          |
| M (600)   | 1880    | Vertical              | 25           | 24.41                 | 24.32    | 22.0                            | 0.815         | 1.6          |
| H (1175)  | 1908.75 | Vertical              | 25           | 24.35                 | 23.85    | 22.1                            | 0.663         | 1.6          |
| Phantom Section: <u>Flat (Body)</u> position (See EUT set-up configuration 2)                     |         |                       |              |                       |          |                                 |               |              |
| Frequency   |         | EUT Set-up conditions |              | Conducted power [dBm] |          | Liquid Temp [°C]                | SAR (W/kg)    | Limit (W/kg) |
| Channel   | MHz     | Antenna               | Sep. [mm]    | Before                | After    |                                 |               |              |
| L (25)  | 1851.25 | Vertical              | 25           | 24.47                 | 24.45    | 22.3                            | 0.154         | 1.6          |
| M (600)   | 1880    | Vertical              | 25           | 24.41                 | 24.32    | 22.5                            | <b>0.206</b>  | 1.6          |
| H (1175)  | 1908.75 | Vertical              | 25           | 24.35                 | 23.85    | 22.4                            | 0.179         | 1.6          |
| Phantom Section: <u>Flat (Body)</u> position (See EUT set-up configuration 3)                     |         |                       |              |                       |          |                                 |               |              |
| Frequency   |         | EUT Set-up conditions |              | Conducted power [dBm] |          | Liquid Temp [°C]                | SAR (W/kg)    | Limit (W/kg) |
| Channel   | MHz     | Antenna               | Sep. [mm]    | Before                | After    |                                 |               |              |
| L (25)  | 1851.25 | Vertical              | 25           | 24.47                 | 24.45    | 22.5                            | 0.0368        | 1.6          |
| M (600)   | 1880    | Vertical              | 25           | 24.41                 | 24.32    | 22.4                            | <b>0.0456</b> | 1.6          |
| H (1175)  | 1908.75 | Vertical              | 25           | 24.35                 | 23.85    | 22.3                            | 0.0322        | 1.6          |
| Note (s):<br>Please refer to attachment for each configuration presentation in plot format.       |         |                       |              |                       |          |                                 |               |              |

**MEASUREMENT RESULTS (CONTINUE)**

Measured date: June 27, 2002

| <b>LIQUID VERIFY</b>   |            |                       |              |                       |               |                  |               |              |
|--|------------|-----------------------|--------------|-----------------------|---------------|------------------|---------------|--------------|
| <b>Ambient Conditions</b> - Ambient temperature: <u>23</u> °C; Relative Humidity: <u>63</u> %                                  |            |                       |              |                       |               |                  |               |              |
| Liquid   | Temp. [°C] | Parameters            | Target Value | Measured              | Deviation [%] | Limit [%]        |               |              |
| <b>Muscle<br/>1900 MHz</b>   | 21.3       | $\epsilon_r$          | 53.3         | 50.8                  | -4.69         | ±5               |               |              |
|  |            | $\sigma$              | 1.52         | 1.51                  | -0.66         | ±5               |               |              |
| <b>SAR MEASUREMENT</b>   |            |                       |              |                       |               |                  |               |              |
| Model: PC3200 with laptop ( <b>Toshiba</b> ); Modulation: <u>CDMA</u> ; Crest factor: <u>1</u> Depth of liquid: <u>15.1</u> cm |            |                       |              |                       |               |                  |               |              |
| Phantom Section: <u>Flat (Body)</u> position (See EUT set-up configuration 1)  |            |                       |              |                       |               |                  |               |              |
| Frequency  |            | EUT Set-up conditions |              | Conducted power [dBm] |               | Liquid Temp [°C] | SAR (W/kg)    | Limit (W/kg) |
| Channel  | MHz        | Antenna               | Sep. [mm]    | Before                | After         |                  |               |              |
| L (25)   | 1851.25    | Vertical              | 25           | 24.48                 | 24.47         | 21.1             | <b>0.761</b>  | 1.6          |
| M (600)  | 1880       | Vertical              | 25           | 24.37                 | 24.25         | 21.3             | 0.707         | 1.6          |
| H (1175)   | 1908.75    | Vertical              | 25           | 24.38                 | 23.82         | 21.4             | 0.541         | 1.6          |
| Phantom Section: <u>Flat (Body)</u> position (See EUT set-up configuration 2)  |            |                       |              |                       |               |                  |               |              |
| Frequency  |            | EUT Set-up conditions |              | Conducted power [dBm] |               | Liquid Temp [°C] | SAR (W/kg)    | Limit (W/kg) |
| Channel  | MHz        | Antenna               | Sep. [mm]    | Before                | After         |                  |               |              |
| L (25)   | 1851.25    | Vertical              | 25           | 24.48                 | 24.47         | 21.2             | 0.202         | 1.6          |
| M (600)  | 1880       | Vertical              | 25           | 24.37                 | 24.25         | 21.1             | <b>0.219</b>  | 1.6          |
| H (1175)   | 1908.75    | Vertical              | 25           | 24.38                 | 23.82         | 20.9             | 0.188         | 1.6          |
| Phantom Section: <u>Flat (Body)</u> position (See EUT set-up configuration 3)  |            |                       |              |                       |               |                  |               |              |
| Frequency  |            | EUT Set-up conditions |              | Conducted power [dBm] |               | Liquid Temp [°C] | SAR (W/kg)    | Limit (W/kg) |
| Channel  | MHz        | Antenna               | Sep. [mm]    | Before                | After         |                  |               |              |
| L (25)   | 1851.25    | Vertical              | 25           | 24.48                 | 24.47         | 20.5             | 0.0358        | 1.6          |
| M (600)  | 1880       | Vertical              | 25           | 24.37                 | 24.25         | 20.6             | <b>0.0397</b> | 1.6          |
| H (1175)   | 1908.75    | Vertical              | 25           | 24.38                 | 23.82         | 20.7             | 0.0341        | 1.6          |
| Note (s):<br>Please refer to attachment for highest SAR values for each configuration presentation in plot format.             |            |                       |              |                       |               |                  |               |              |

**MEASUREMENT RESULTS (CONTINUE)**

Measured date: June 27, 2002

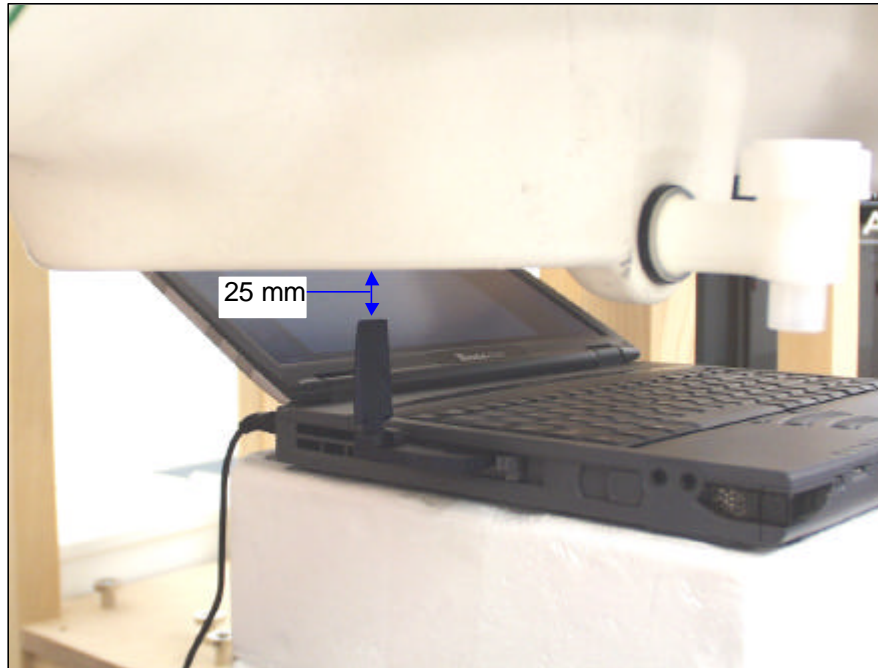
| <b>SAR MEASUREMENT</b>   |         |                       |           |                       |       |                                 |               |              |
|--|---------|-----------------------|-----------|-----------------------|-------|---------------------------------|---------------|--------------|
| Model: PC3200 with laptop ( <b>Fujitsu</b> ); Modulation: <u>CDMA</u> ; Crest factor: <u>1</u> |         |                       |           |                       |       | Depth of liquid: <u>15.1</u> cm |               |              |
| Phantom Section: <u>Flat (Body)</u> position (See EUT set-up configuration 1)                  |         |                       |           |                       |       |                                 |               |              |
| Frequency  |         | EUT Set-up conditions |           | Conducted power [dBm] |       | Liquid Temp [°C]                | SAR (W/kg)    | Limit (W/kg) |
| Channel  | MHz     | Antenna               | Sep. [mm] | Before                | After |                                 |               |              |
| L (25)   | 1851.25 | Vertical              | 25        | 24.48                 | 24.47 | 20.4                            | <b>0.505</b>  | 1.6          |
| Phantom Section: <u>Flat (Body)</u> position (See EUT set-up configuration 2)                  |         |                       |           |                       |       |                                 |               |              |
| Frequency  |         | EUT Set-up conditions |           | Conducted power [dBm] |       | Liquid Temp [°C]                | SAR (W/kg)    | Limit (W/kg) |
| Channel  | MHz     | Antenna               | Sep. [mm] | Before                | After |                                 |               |              |
| M (600)  | 1880    | Vertical              | 25        | 24.37                 | 24.25 | 20.6                            | <b>0.126</b>  | 1.6          |
| Phantom Section: <u>Flat (Body)</u> position (See EUT set-up configuration 3)                  |         |                       |           |                       |       |                                 |               |              |
| Frequency  |         | EUT Set-up conditions |           | Conducted power [dBm] |       | Liquid Temp [°C]                | SAR (W/kg)    | Limit (W/kg) |
| Channel  | MHz     | Antenna               | Sep. [mm] | Before                | After |                                 |               |              |
| M (600)  | 1880    | Vertical              | 25        | 24.37                 | 24.25 | 20.6                            | <b>0.0161</b> | 1.6          |
| Note (s):<br>Please refer to attachment for each configuration presentation in plot format.    |         |                       |           |                       |       |                                 |               |              |

## 2.1. SETUP PHOTOS

EUT Set-up Configuration 1



EUT Set-up Configuration 2





SETUP PHOTOS (Continue)

EUT Set-up Configuration 3



### 3. REQUIREMENTS FOR COMPLIANCE TESTING DEFINED BY THE FCC

The US Federal Communications Commission has released the report and order "Guidelines for Evaluating the Environmental Effects of RF Radiation", ET Docket No. 93-62 in August 1996 [1]. The order requires routine SAR evaluation prior to equipment authorization of portable transmitter devices, including portable telephones. For consumer products, the applicable limit is 1.6 mW/g for an uncontrolled environment and 8.0 mW/g for an occupational/controlled environment as recommended by the ANSI/IEEE standard C95.1-1992 [6]. According to the Supplement C of OET Bulletin 65 "Evaluating Compliance with FCC Guide-lines for Human Exposure to Radio frequency Electromagnetic Fields", released on Jun 29, 2001 by the FCC, the device should be evaluated at maximum output power (radiated from the antenna) under "worst-case" conditions for normal or intended use, incorporating normal antenna operating positions, device peak performance frequencies and positions for maximum RF energy coupling.

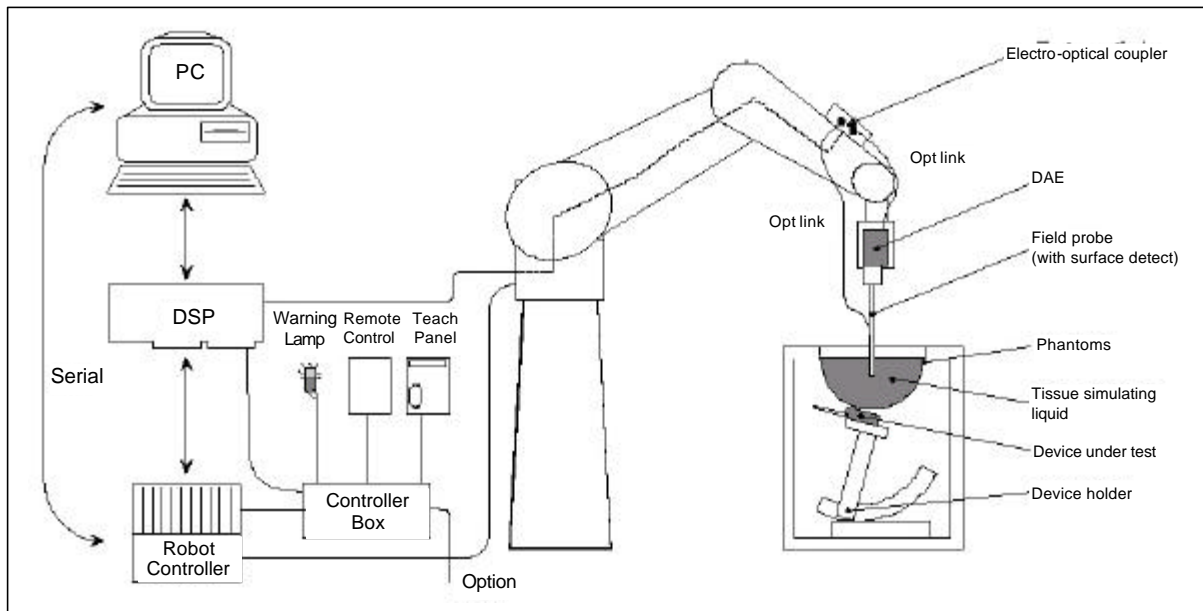
### 4. DOSIMETRIC ASSESSMENT SETUP

These measurements were performed with the automated near-field scanning system DASY3 from Schmid & Partner Engineering AG (SPEAG). The system is based on a high precision robot (working range greater than 0.9 m) which positions the probes with a positional repeatability of better than  $\pm 0.02$  mm. Special E- and H-field probes have been developed for measurements close to material discontinuity, the sensors of which are directly loaded with a Schottky diode and connected via highly resistive lines to the data acquisition unit. The SAR measurements were conducted with the dosimetric probe ET3DV6 SN: 1577 (manufactured by SPEAG), designed in the classical triangular configuration [3] and optimized for dosimetric evaluation. The probe has been calibrated according to the procedure described in [7] with accuracy of better than  $\pm 10\%$ . The spherical isotropy was evaluated with the procedure described in [8] and found to be better than  $\pm 0.25$  dB. The phantom used was the SAM Twin Phantom as described in FCC supplement C, IEEE P1528 and EN50361.

The Tissue simulation liquid used for each test is in according with the FCC OET65 supplement C as listed below.

| Ingredients<br>(% by weight) | Frequency (MHz) |       |       |      |       |       |       |      |      |      |
|------------------------------|-----------------|-------|-------|------|-------|-------|-------|------|------|------|
|                              | 450             |       | 835   |      | 915   |       | 1900  |      | 2450 |      |
| Tissue Type                  | Head            | Body  | Head  | Body | Head  | Body  | Head  | Body | Head | Body |
| Water                        | 38.56           | 51.16 | 41.45 | 52.4 | 41.05 | 56.0  | 54.9  | 40.4 | 62.7 | 73.2 |
| Salt (NaCl)                  | 3.95            | 1.49  | 1.45  | 1.4  | 1.35  | 0.76  | 0.18  | 0.5  | 0.5  | 0.04 |
| Sugar                        | 56.32           | 46.78 | 56.0  | 45.0 | 56.5  | 41.76 | 0.0   | 58.0 | 0.0  | 0.0  |
| HEC                          | 0.98            | 0.52  | 1.0   | 1.0  | 1.0   | 1.21  | 0.0   | 1.0  | 0.0  | 0.0  |
| Bactericide                  | 0.19            | 0.05  | 0.1   | 0.1  | 0.1   | 0.27  | 0.0   | 0.1  | 0.0  | 0.0  |
| Triton X-100                 | 0.0             | 0.0   | 0.0   | 0.0  | 0.0   | 0.0   | 0.0   | 0.0  | 36.8 | 0.0  |
| DGBE                         | 0.0             | 0.0   | 0.0   | 0.0  | 0.0   | 0.0   | 44.92 | 0.0  | 0.0  | 26.7 |
| Dielectric Constant          | 43.42           | 58.0  | 42.54 | 56.1 | 42.0  | 56.8  | 39.9  | 54.0 | 39.8 | 52.5 |
| Conductivity (S/m)           | 0.85            | 0.83  | 0.91  | 0.95 | 1.0   | 1.07  | 1.42  | 1.45 | 1.88 | 1.78 |

#### 4.1. MEASUREMENT SYSTEM DIAGRAM



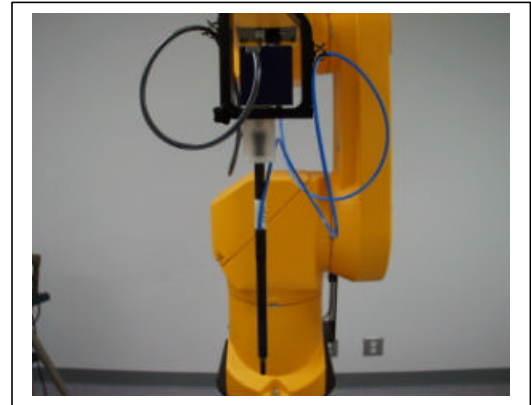
#### The DASYS3 system for performing compliance tests consist of the following items:

1. A standard high precision 6-axis robot (Stäubli RX family) with controller and software.
2. An arm extension for accommodating the data acquisition electronics (DAE).
3. A dosimetric probe, i.e., an isotropic E-field probe optimized and calibrated for usage in tissue simulating liquid. The probe is equipped with an optical surface detector system.
4. A data acquisition electronic (DAE), which performs the signal amplification, signal multiplexing, AD-conversion, offset measurements, mechanical surface detection, collision detection, etc. The unit is battery powered with standard or rechargeable batteries. The signal is optically transmitted to the EOC.
5. A unit to operate the optical surface detector, which is connected to the EOC.
6. The Electro-optical coupler (EOC) performs the conversion from the optical into a digital electric signal of the DAE. The EOC is connected to the PC plug-in card.
7. The functions of the PC plug-in card based on a DSP is to perform the time critical task such as signal filtering, surveillance of the robot operation fast movement interrupts.
8. A computer operating Windows 95 or larger
9. DASYS3 software
10. Remote control with teaches pendant and additional circuitry for robot safety such as warning lamps, etc.
11. The SAM phantom enabling testing left-hand and right-hand usage.
12. The device holder for handheld EUT.
13. Tissue simulating liquid mixed according to the given recipes (see Application Note).
14. System validation dipoles to validate the proper functioning of the system.

## 4.2. SYSTEM COMPONENTS

### ET3DV5 Probe Specification

Construction Symmetrical design with triangular core  
 Built-in optical fiber for surface detection System  
 Built-in shielding against static charges  
 Calibration In air from 10 MHz to 2.5 GHz  
 In brain and muscle simulating tissue at  
 Frequencies of 450 MHz, 900 MHz and  
 1.8 GHz (accuracy  $\pm 8\%$ )  
 Frequency 10 MHz to  $> 6$  GHz; Linearity:  $\pm 0.2$  dB  
 (30 MHz to 3 GHz)  
 Directivity  $\pm 0.2$  dB in brain tissue (rotation around probe axis)  
 $\pm 0.4$  dB in brain tissue (rotation normal probe axis)  
 Dynamic 5 mW/g to  $> 100$  mW/g;  
 Range Linearity:  $\pm 0.2$  dB  
 Surface  $\pm 0.2$  mm repeatability in air and clear liquids  
 Detection over diffuse reflecting surfaces.  
 Dimensions Overall length: 330 mm  
 Tip length: 16 mm  
 Body diameter: 12 mm  
 Tip diameter: 6.8 mm  
 Distance from probe tip to dipole centers: 2.7 mm  
 Application General dosimetric up to 3 GHz  
 Compliance tests of mobile phones  
 Fast automatic scanning in arbitrary phantoms



Photograph of the probe



Inside view of  
ET3DV6 E-field Probe

The SAR measurements were conducted with the dosimetric probe ET3DV6 designed in the classical triangular configuration and optimized for dosimetric evaluation. The probe is constructed using the thick film technique; with printed resistive lines on ceramic substrates. The probe is equipped with an optical multi-fiber line ending at the front of the probe tip. It is connected to the EOC box on the robot arm and provides an automatic detection of the phantom surface. Half of the fibers are connected to a pulsed infrared transmitter, the other half to a synchronized receiver. As the probe approaches the surface, the reflection from the surface produces a coupling from the transmitting to the receiving fibers. This reflection increases first during the approach, reaches maximum and then decreases. If the probe is flatly touching the surface, the coupling is zero. The distance of the coupling maximum to the surface is independent of the surface reflectivity and largely independent of the surface to probe angle. The DASY3 software reads the reflection during a software approach and looks for the maximum using a 2<sup>nd</sup> order fitting. The approach is stopped when reaching the maximum.

## E-Field Probe Calibration Process

Each probe is calibrated according to a dosimetric assessment procedure described in [6] with accuracy better than +/- 10%. The spherical isotropy was evaluated with the procedure described in [7] and found to be better than +/-0.25dB. The sensitivity parameters (NormX, NormY, NormZ), the diode compression parameter (DCP) and the conversion factor (ConvF) of the probe are tested.

The free space E-field from amplified probe outputs is determined in a test chamber. This is performed in a TEM cell for frequencies below 1 GHz, and in a waveguide above 1 GHz for free space. For the free space calibration, the probe is placed in the volumetric center of the cavity and at the proper orientation with the field. The probe is then rotated 360 degrees.

E-field temperature correlation calibration is performed in a flat phantom filled with the appropriate simulated brain tissue. The measured free space E-field in the medium correlates to temperature rise in dielectric medium. For temperature correlation calibration a RF transparent thermistor-based temperature probe is used in conjunction with the E-field probe.

## Data Evaluation

The DASY3 software automatically executes the following procedures to calculate the field units from the microvolt readings at the probe connector. The parameters used in the evaluation are stored in the configuration modules of the software:

|                    |                           |  |
|--------------------|---------------------------|--|
| Probe parameters:  | - Sensitivity             | Norm <sub>i</sub> , a <sub>i10</sub> , a <sub>i11</sub> , a <sub>i12</sub> |
|                    | - Conversion factor       | ConvF <sub>i</sub>   |
|                    | - Diode compression point | Dcp <sub>i</sub>   |
| Device parameters: | - Frequency               | f  |
|                    | - Crest factor            | cf   |
| Media parameters:  | - Conductivity            | σ  |
|                    | - Density                 | ρ  |

These parameters must be set correctly in the software. They can either be found in the component documents or be imported into the software from the configuration files issued for the DASY3 components. In the direct measuring mode of the multi-meter option, the parameters of the actual system setup are used. In the scan visualization and export modes, the parameters stored in the corresponding document files are used.

The first step of the evaluation is a linearization of the filtered input signal to account for the compression characteristics of the detector diode. The compensation depends on the input signal, the diode type and the DC-transmission factor from the diode to the evaluation electronics. If the exciting field is pulsed, the crest factor of the signal must be known to correctly compensate for peak power. The formula for each channel can be given as:

$$V_i = U_i + U_i^2 \cdot \frac{cf}{dcp_i}$$

|      |         |                                   |                  |
|------|---------|-----------------------------------|------------------|
| with | $V_i$   | = Compensated signal of channel i | (i = x, y, z)    |
|      | $U_i$   | = Input signal of channel i       | (i = x, y, z)    |
|      | $cf$    | = Crest factor of exciting field  | (DASY parameter) |
|      | $dcp_i$ | = Diode compression point         | (DASY parameter) |

From the compensated input signals the primary field data for each channel can be evaluated:

E-field probes: 
$$E_i = \sqrt{\frac{V_i}{Norm_i \cdot ConvF}}$$

H-field probes: 
$$H_i = \sqrt{V_i} \cdot \frac{a_{i10} + a_{i11}f + a_{i12}f^2}{f}$$

with  $V_i$  = Compensated signal of channel i (i = x, y, z)

$Norm_i$  = Sensor sensitivity of channel i (i = x, y, z)

$\mu V/(V/m)^2$  for E0field Probes

$ConvF$  = Sensitivity enhancement in solution

$a_{ij}$  = Sensor sensitivity factors for H-field probes

$f$  = Carrier frequency (GHz)

$E_i$  = Electric field strength of channel i in V/m

$H_i$  = Magnetic field strength of channel i in A/m

The RSS value of the field components gives the total field strength (Hermitian magnitude):

$$E_{tot} = \sqrt{E_x^2 + E_y^2 + E_z^2}$$

The primary field data are used to calculate the derived field units.

$$SAR = E_{tot}^2 \cdot \frac{\sigma}{\rho \cdot 1000}$$

with  $SAR$  = local specific absorption rate in mW/g

$E_{tot}$  = total field strength in V/m

$\sigma$  = conductivity in [mho/m] or [siemens/m]

$\rho$  = equivalent tissue density in g/cm<sup>3</sup>

Note that the density is normally set to 1 (or 1.06), to account for actual brain density rather than the density of the simulation liquid.

The power flow density is calculated assuming the excitation field as a free space field.

$$P_{pwe} = \frac{E_{tot}^2}{3770} \quad \text{or} \quad P_{pwe} = H_{tot}^2 \cdot 37.7$$

with  $P_{pwe}$  = Equivalent power density of a plane wave in mW/cm<sup>2</sup>

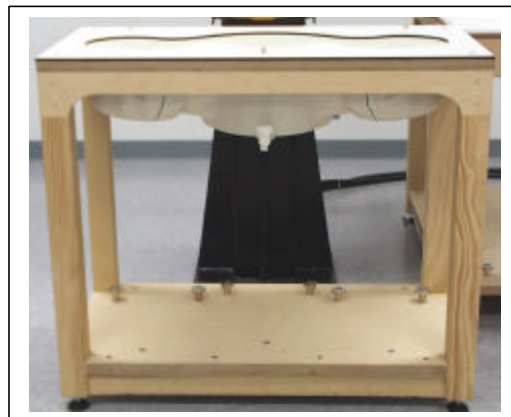
$E_{tot}$  = total electric field strength in V/m

$H_{tot}$  = total magnetic field strength in A/m

## SAM Phantom

The SAM Phantom V4.0 is constructed of a fiberglass shell integrated in a wooden table. The shape of the shell is in compliance with the specification set in IEEE P1528 and CENELEC EN50361. The phantom enables the dosimetric evaluation of left and right hand phone usage as well as body mounted usage at the flat phantom region. A cover prevents the evaporation of the liquid. Reference markings on the Phantom allow the complete setup of all predefined phantom positions and measurement grids by manually teaching three points in the robot.

Shell Thickness:  $2 \pm 0.2$  mm  
Filling Volume: Approx. 25 liters  
Dimensions (H x L x W): 810 x 1000 x 500 mm

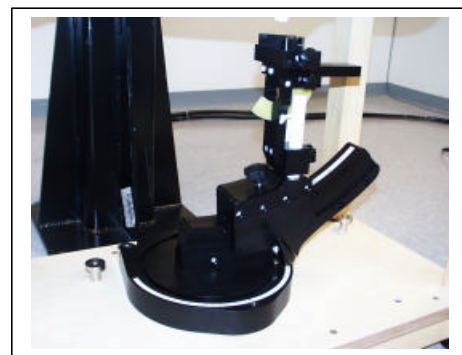


**SAM Phantom**

## Device Holder for Transmitters

In combination with the Generic Twin Phantom V3.0, the Mounting Device enables the rotation of the mounted transmitter in spherical coordinates whereby the rotation points is the ear opening. The devices can be easily, accurately, and repeatedly positioned according to the FCC and CENELEC specifications. The device holder can be locked at different phantom locations (left head, right head, flat phantom).

\* Note: A simulating human hand is not used due to the complex anatomical and geometrical structure of the hand that may produced infinite number of configurations [10]. To produce the worst-case condition (the hand absorbs antenna output power), the hand is omitted during the tests.



**Device Holder**

## 5. MEASUREMENT UNCERTAINTY

The uncertainty budget has been determined for the DASY3 measurement system according to the NIS81 [13] and the NIST1297 [14] documents and is given in the following Table.

| Uncertainty Description                        | Error    | Distrib.  | Weight   | Std. Dev.        | Offset      |
|--|----------|-----------|----------|------------------|-------------|
| <b>Probe Uncertainty</b>                       |          |           |          |                  |             |
| Axial isotropy                                 | ± 0.2 dB | U-shape   | 0.5      | ±2.4 %           |             |
| Spherical isotropy                             | ±0.4 dB  | U-shape   | 0.5      | ±4.8 %           |             |
| Isotropy from gradient                         | ±0.5 dB  | U-shape   | 0        |                  |             |
| Spatial resolution                             | ±0.5 %   | Normal    | 1        | ±0.5 %           |             |
| Linearity error                                | ±0.2 dB  | Rectangle | 1        | ±2.7 %           |             |
| Calibration error                              | ±3.3 %   | Normal    | 1        | ± 3.3 %          |             |
| <b>SAR Evaluation Uncertainty</b>              |          |           |          |                  |             |
| Data acquisition error                         | ±1%      | Rectangle | 1        | ±0.6 %           |             |
| ELF and RF disturbances                        | ±0.25 %  | Normal    | 1        | ±0.25 %          |             |
| Conductivity assessment                        | ±10 %    | Rectangle | 1        | ± 5.8 %          |             |
| <b>Spatial Peak SAR Evaluation Uncertainty</b> |          |           |          |                  |             |
| Extrapol boundary effect                       | ±3%      | Normal    | 1        | ±3%              | ± 5%        |
| Probe positioning error                        | ±0.1 mm  | Normal    | 1        | ± 1%             |             |
| Integrat. and cube orient                      | ±3%      | Normal    | 1        | ±3%              |             |
| Cube shape inaccuracies                        | ±2%      | Rectangle | 1        | ±1.2 %           |             |
| Device positioning                             | ±6%      | Normal    | 1        | ± 6%             |             |
| <b>Combined Uncertainties</b>                  |          |           | <b>1</b> | <b>±11.7 %</b>   | <b>± 5%</b> |
| <b>Expanded uncertainty (K = 2)</b>            |          |           |          | <b>± 23.5 %.</b> |             |

## 6. EUT TUNE-UP PROCEDURE

Band Class and Channel selection is not part of the TX ALL UPs program and should be set prior to executing "TX All UPs". The "TX All UPs" command in directed test software turns on the transmitter and sets all the power control bits to "1". To turn on the transmitter, the command utilizes the modem code much the same way the Software Functions are used by the modem in normal operation to initialize the transmitter. The main processor is setup to produce an IS-95 signal with random data. The transmit chain is turned on, including enabling the voltage regulators and programming the transmit IC. This IC contains several registers which are set after power up and set the TX IF synthesizer to allow some custom adjustment of the performance characteristics. The Power Amplifier (PA) is enabled. The PA mode is left under ASIC control. Note that when the unit is taken offline, the desired band of operation (PCS or Cellular) and the channel should be selected which will cause the appropriate parameters to be loaded. In normal operation the mobile reads the power control bits on the forward channel and will adjust the TX power accordingly. The "TX All UPs" command does not require a forward link but rather sets all power control bits to "1" indicating that the transmitter should always increase power. The TX max power limit algorithms in the modem are operating normally so the TX MAX POWER will be limited identically to normal operation.



## 7. EVALUATION PROCEDURE

### Simulated Tissue Liquid Parameter confirmation

The dielectric parameters were checked prior to assessment using the HP85070A dielectric probe kit. The dielectric parameters measured are reported in each correspondent section.

### IEEE SCC-34/SC-2 P1528 recommended Tissue Dielectric Parameters

The head tissue dielectric parameters recommended by the IEEE SCC-34/SC-2 in P1528 have been incorporated in the following table. These head parameters are derived from planar layer models simulating the highest expected SAR for the dielectric properties and tissue thickness variations in a human head. Other head and body tissue parameters that have not been specified in P1528 are derived from the tissue dielectric parameters computed from the 4-Cole-Cole equations and extrapolated according to the head parameters specified in P1528

| Target Frequency<br>(MHz) | Head         |                | Body         |                |
|---------------------------|--------------|----------------|--------------|----------------|
|                           | $\epsilon_r$ | $\sigma$ (S/m) | $\epsilon_r$ | $\sigma$ (S/m) |
| 150                       | 52.3         | 0.76           | 61.9         | 0.80           |
| 300                       | 45.3         | 0.87           | 58.2         | 0.92           |
| 450                       | 43.5         | 0.87           | 56.7         | 0.94           |
| 835                       | 41.5         | 0.90           | 55.2         | 0.97           |
| 900                       | 41.5         | 0.97           | 55.0         | 1.05           |
| 915                       | 41.5         | 0.98           | 55.0         | 1.06           |
| 1450                      | 40.5         | 1.20           | 54.0         | 1.30           |
| 1610                      | 40.3         | 1.29           | 53.8         | 1.40           |
| 1800-2000                 | 40.0         | 1.40           | 53.3         | 1.52           |
| 2450                      | 39.2         | 1.80           | 52.7         | 1.95           |
| 3000                      | 38.5         | 2.40           | 52.0         | 2.73           |
| 5800                      | 45.3         | 5.27           | 48.2         | 6.00           |

( $\epsilon_r$  = relative permittivity,  $\sigma$  = conductivity and  $\rho = 1000 \text{ kg/m}^3$ )

### System Accuracy Verification

Prior to the assessment, the system validation kit was used to test whether the system was operating within its specifications of  $\pm 10\%$ . The validation results are tabulated below. And also the corresponding SAR plot is attached as well in the SAR plots files.

### IEEE P1528 Recommended Reference Value

| Frequency<br>(MHz) | 1 g SAR | 10 g SAR | Local SAR at surface<br>(Above feed point) | Local SAR at surface<br>(y=2cm offset from feed point) |
|--------------------|---------|----------|--|--|
| 300                | 3.0     | 2.0      | 4.4  | 2.1  |
| 450                | 4.9     | 3.3      | 7.2  | 3.2  |
| 835                | 9.5     | 6.2      | 14.1                                       | 4.9  |
| 900                | 10.8    | 6.9      | 16.4                                       | 5.4  |
| 1450               | 29.0    | 16.0     | 50.2                                       | 6.5  |
| 1800               | 38.1    | 19.8     | 69.5                                       | 6.8  |
| 1900               | 39.7    | 20.5     | 72.1                                       | 6.6  |
| 2000               | 41.1    | 21.1     | 74.6                                       | 6.5  |
| 2450               | 52.4    | 24.0     | 104.2                                      | 7.7  |
| 3000               | 63.8    | 25.7     | 140.2                                      | 9.5  |

**7.1. SYSTEM VALIDATION**Measured Date: June 27, 2002

| <b>Ambient conditions</b> - Ambient temperature: <u>23°C</u> ; Relative humidity: <u>63%</u> |                  |              |              |                                 |               |           |
|--|------------------|--------------|--------------|---------------------------------|---------------|-----------|
| System Validation Dipole: <u>D1800V2 SN: 294</u>   |                  |              |              | Depth of liquid: <u>15.1 cm</u> |               |           |
| Liquid   | Liquid Temp [°C] | Parameters   | Target Value | Measured Value                  | Deviation [%] | Limit [%] |
| <b>Head<br/>1800 MHz</b>   | 21.3             | $\epsilon_r$ | 40           | 40.32                           | +0.8          | $\pm 5$   |
|  |                  | $\sigma$     | 1.4          | 1.43                            | 2.14          | $\pm 5$   |
|  | 21.3             | 1 g SAR      | 38.1         | 37.28                           | -2.15         | $\pm 10$  |
| Note: Please refer to Attachment for the result presentation in plot format.                 |                  |              |              |                                 |               |           |

Measured Date: July 11, 2002

| <b>Ambient conditions</b> - Ambient temperature: <u>23°C</u> ; Relative humidity: <u>62%</u> |                  |              |              |                                 |               |           |
|--|------------------|--------------|--------------|---------------------------------|---------------|-----------|
| System Validation Dipole: <u>D1800V2 SN: 294</u>   |                  |              |              | Depth of liquid: <u>15.1 cm</u> |               |           |
| Liquid   | Liquid Temp [°C] | Parameters   | Target Value | Measured Value                  | Deviation [%] | Limit [%] |
| <b>Head<br/>1800 MHz</b>   | 21.2             | $\epsilon_r$ | 40           | 39.51                           | -1.225        | $\pm 5$   |
|  |                  | $\sigma$     | 1.4          | 1.401                           | +0.07         | $\pm 5$   |
|  | 21.2             | 1 g SAR      | 38.1         | 37.0                            | -2.88         | $\pm 10$  |
| Note: Please refer to Attachment for the result presentation in plot format.                 |                  |              |              |                                 |               |           |

**7.2. SAR EVALUATION PROCEDURE****The evaluation was performed with the following procedure:**

**Step 1:** Measurement of the SAR value at a fixed location above the central position was used as a reference value for assessing the power drop.

**Step 2:** The SAR distribution at the exposed side of the body was measured at a distance of 3.9 mm from the inner surface of the shell. The area covered the entire dimension of the EUT and the horizontal grid spacing was 20 mm x 20 mm. Based on the data, the area of the maximum absorption was determined by spline interpolation.

**Step 3:** Around this point, a volume of 32 mm x 32 mm x 34 mm was assessed by measuring 5 x 5 x 7 points. On the basis of this data set, the spatial peak SAR value was evaluated under the following procedure:

1. The data at the surface were extrapolated, since the center of the dipoles is 2.7 mm away from the tip of the probe and the distance between the surface and the lowest measuring point is 1.2 mm. The extrapolation was based on a least square algorithm [11]. A polynomial of the fourth order was calculated through the points in z-axes. This polynomial was then used to evaluate the points between the surface and the probe tip.
2. The maximum interpolated value was searched with a straightforward algorithm. Around this maximum the SAR values averaged over the spatial volumes (1 g or 10 g) were computed by the 3D-Spline interpolation algorithm. The 3D-Spline is composed of three one-dimensional splines with the "Not a knot"-condition (in x, y and z-directions) [11], [12]. The volume was integrated with the trapezoidal-algorithm. One thousand points (10 x 10 x 10) were interpolated to calculate the average.
3. All neighboring volumes were evaluated until no neighboring volume with a higher average value was found.

**Step 4:** Re-measurement of the SAR value at the same location as in Step 1. If the value changed by more than 5%, the evaluation was repeated.

**7.3. EXPOSURE LIMIT**

(A). Limits for Occupational/Controlled Exposure (W/kg)

| Whole-Body | Partial-Body | Hands, Wrists, Feet and Ankles |
|------------|--------------|--------------------------------|
| 0.4        | 8.0          | 20.0                           |

(B). Limits for General Population/Uncontrolled Exposure (W/kg)

| Whole-Body | Partial-Body | Hands, Wrists, Feet and Ankles |
|------------|--------------|--------------------------------|
| 0.08       | 1.6          | 4.0                            |

NOTE: **Whole-Body SAR** is averaged over the entire body, **partial-body SAR** is averaged over any 1 gram of tissue defined as a tissue volume in the shape of a cube. **SAR for hands, wrists, feet and ankles** is averaged over any 10 grams of tissue defined as a tissue volume in the shape of a cube.

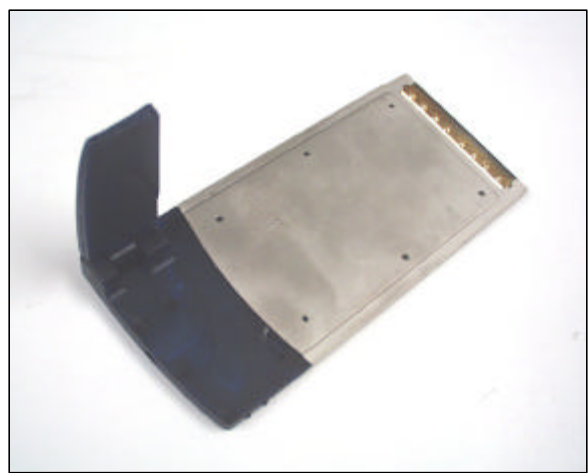
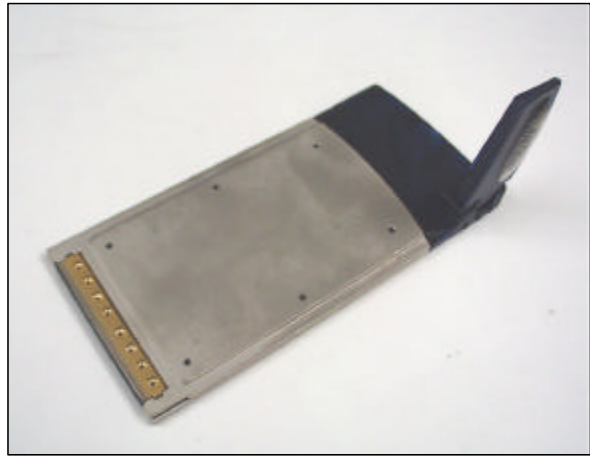
**Population/Uncontrolled Environments:** are defined as locations where there is the exposure of individuals who have no knowledge or control of their exposure.

**Occupational/Controlled Environments:** are defined as locations where there is exposure that may be incurred by people who are aware of the potential for exposure, (i.e. as a result of employment or occupation).

|   |
|---|
| <p><b>NOTE</b><br/> <b>GENERAL POPULATION/UNCONTROLLED EXPOSURE</b><br/> <b>PARTIAL BODY LIMIT</b><br/> <b>1.6 mW/g</b></p> |
|---|

8. EUT PHOTOS

EUT



**9. EQUIPMENTS LIST & CALIBRATION STATUS**

| Name of Equipment                    | Manufacturer    | Type/Model | Serial Number   | Calibration |          |
|--------------------------------------|-----------------|------------|-----------------|-------------|----------|
|                                      |                 |            |                 | last cal.   | due date |
| S-Parameter Network Analyzer         | Agilent         | 8753ES     | MY40001647      | 6/5/02      | 6/5/03   |
| Electronic Probe kit                 | Hewlett Packard | 85070A     | N/A             | N/A         | N/A      |
| 3.5 mm Calibration Kit               | Agilent         | 85033D     | 3423A07200      | 6/5/02      | 6/5/03   |
| Power Meter                          | Rohde & Schwarz | NRVD       | 842093/017      | 1/21/02     | 1/21/03  |
| Power Sensor                         | Rohde & Schwarz | NRV-Z51    | 841275/013      | 1/21/02     | 1/21/03  |
| Universal Radio Communication Tester | Rohde & Schwarz | CMU 200    | 838114/032      | 11/20/01    | 11/20/02 |
| Amplifier                            | Mini-Circuit    | ZHL-42W    | D072701-5       | N/A         | N/A      |
| DC Power generator                   | Kenwood         | PA36-3A    | 7060074         | N/A         | N/A      |
| Data Acquisition Electronics (DAE)   | SPEAG           | DAE3 V1    | 500             | 2/26/02     | 2/26/03  |
| Dosimetric E-Field Probe             | SPEAG           | ET3DV6     | 1578            | 2/22/01     | 2/22/03  |
| 900 MHz System Validation Dipole     | SPEAG           | D900V2     | 108             | 4/17/01     | 4/17/03  |
| 1800 MHz System Validation Dipole    | SPEAG           | D1800V2    | 294             | 4/19/01     | 4/19/03  |
| 450 MHz System Validation Dipole     | SPEAG           | D450V2     | 1003            | 4/5/02      | 4/19/04  |
| Probe Alignment Unit                 | SPEAG           | LB (V2)    | 261             | N/A         | N/A      |
| Dummy Probe                          | SPEAG           | DP1        | N/A             | N/A         | N/A      |
| Robot                                | Staubli         | RX90B L    | F00/5H31A1/A/01 | N/A         | N/A      |
| Generic Twin Phantom                 | SPEAG           | N/A        | N/A             | N/A         | N/A      |
| SAM Phantom                          | SPEAG           | N/A        | N/A             | N/A         | N/A      |
| Devices Holder                       | SPEAG           | N/A        | N/A             | N/A         | N/A      |
| Head 450 MHz                         | CCS             | H450A      | N/A             | Daily       | N/A      |
| Muscle 450 MHz                       | CCS             | M450A      | N/A             | Daily       | N/A      |
| Head 835 MHz                         | CCS             | H835A      | N/A             | Daily       | N/A      |
| Muscle 835 MHz                       | CCS             | M835A      | N/A             | Daily       | N/A      |
| Head 900 MHz                         | CCS             | H900A      | N/A             | Daily       | N/A      |
| Muscle 900 MHz                       | CCS             | M900A      | N/A             | Daily       | N/A      |
| Head 1800 MHz                        | CCS             | H1800A     | N/A             | Daily       | N/A      |
| Muscle 1800 MHz                      | CCS             | M1800A     | N/A             | Daily       | N/A      |
| Head 1900 MHz                        | CCS             | H1900A     | N/A             | Daily       | N/A      |
| Muscle 1900 MHz                      | CCS             | M1900A     | N/A             | Daily       | N/A      |
| Head 2450 MHz                        | CCS             | H2450A     | N/A             | Daily       | N/A      |
| Muscle 2450 MHz                      | CCS             | M2450A     | N/A             | Daily       | N/A      |

## 10. REFERENCES

- [1] Federal Communications Commission, "Report and order: Guidelines for evaluating the environmental effects of radiofrequency radiation", Tech. Rep. FCC 96-326, FCC, Washington, D.C. 20554, 1996.
- [2] David L. Means Kwok Chan, Robert F. Cleveland, "Evaluating compliance with FCC guidelines for human exposure to radiofrequency electromagnetic fields", Tech. Rep., Federal Communication Commission, Office of Engineering & Technology, Washington, DC, 1997.
- [3] Thomas Schmid, Oliver Egger, and Niels Kuster, "Automated E-field scanning system for dosimetric assessments", IEEE Transactions on Microwave Theory and Techniques, vol. 44, pp. 105-113, Jan. 1996.
- [4] Niels Kuster, Ralph Kastle, and Thomas Schmid, "Dosimetric evaluation of mobile communications equipment with known precision", IEEE Transactions on Communications, vol. E80-B, no. 5, pp. 645-652, May 1997.
- [5] CENELEC, "Considerations for evaluating of human exposure to electromagnetic fields (EMFs) from mobile telecommunication equipment (MTE) in the frequency range 30MHz - 6GHz", Tech. Rep., CENELEC, European Committee for Electrotechnical Standardization, Brussels, 1997.
- [6] ANSI, ANSI/IEEE C95.1-1992: IEEE Standard for Safety Levels with Respect to Human Exposure to Radio Frequency Electromagnetic Fields, 3 kHz to 300 GHz, The Institute of Electrical and Electronics Engineers, Inc., New York, NY 10017, 1992.
- [7] Katja Pokovic, Thomas Schmid, and Niels Kuster, "Robust setup for precise calibration of E-field probes in tissue simulating liquids at mobile communications frequencies", in ICECOM '97, Dubrovnik, October 15-17, 1997, pp. 120-124.
- [8] Katja Pokovic, Thomas Schmid, and Niels Kuster, "E-field probe with improved isotropy in brain simulating liquids", in Proceedings of the ELMAR, Zadar, Croatia, 23-25 June, 1996, pp. 172-175.
- [9] Volker Hombach, Klaus Meier, Michael Burkhardt, Eberhard Kuhn, and Niels Kuster, "The dependence of EM energy absorption upon human head modeling at 900 MHz", IEEE Transactions on Microwave Theory and Techniques, vol. 44, no. 10, pp. 1865-1873, Oct. 1996.
- [10] Klaus Meier, Ralf Kastle, Volker Hombach, Roger Tay, and Niels Kuster, "The dependence of EM energy absorption upon human head modeling at 1800 MHz", IEEE Transactions on Microwave Theory and Techniques, Oct. 1997, in press.
- [11] W. Gander, Computermathematik, Birkhaeuser, Basel, 1992.
- [12] W. H. Press, S. A. Teukolsky, W. T. Vetterling, and B. P. Flannery, Numerical Recipes in C, The Art of Scientific Computing, Second Edition, Cambridge University Press, 1992. Dosimetric Evaluation of Sample device, month 1998 9
- [13] NIS81 NAMAS, "The treatment of uncertainty in EMC measurement", Tech. Rep., NAMAS Executive, National Physical Laboratory, Teddington, Middlesex, England, 1994.
- [14] Barry N. Taylor and Christ E. Kuyatt, "Guidelines for evaluating and expressing the uncertainty of NIST measurement results", Tech. Rep., National Institute of Standards and Technology, 1994. Dosimetric Evaluation of Sample device, month 1998 10

**11. ATTACHMENT**

| <b>Exhibit</b> | <b>Content</b>                               | <b>No. of page (s)</b> |
|----------------|--|------------------------|
| 1              | System Validation Plots                      | 4                      |
| 2              | SAR Test Plots (Highest SAR values)          | 30                     |
| 3              | Dosimetric E-Field Probe - ET3DV6, S/N: 1578 | 12                     |
| 4              | Validation Dipole - D1800V2, S/N: 294        | 7                      |

**End of Report**