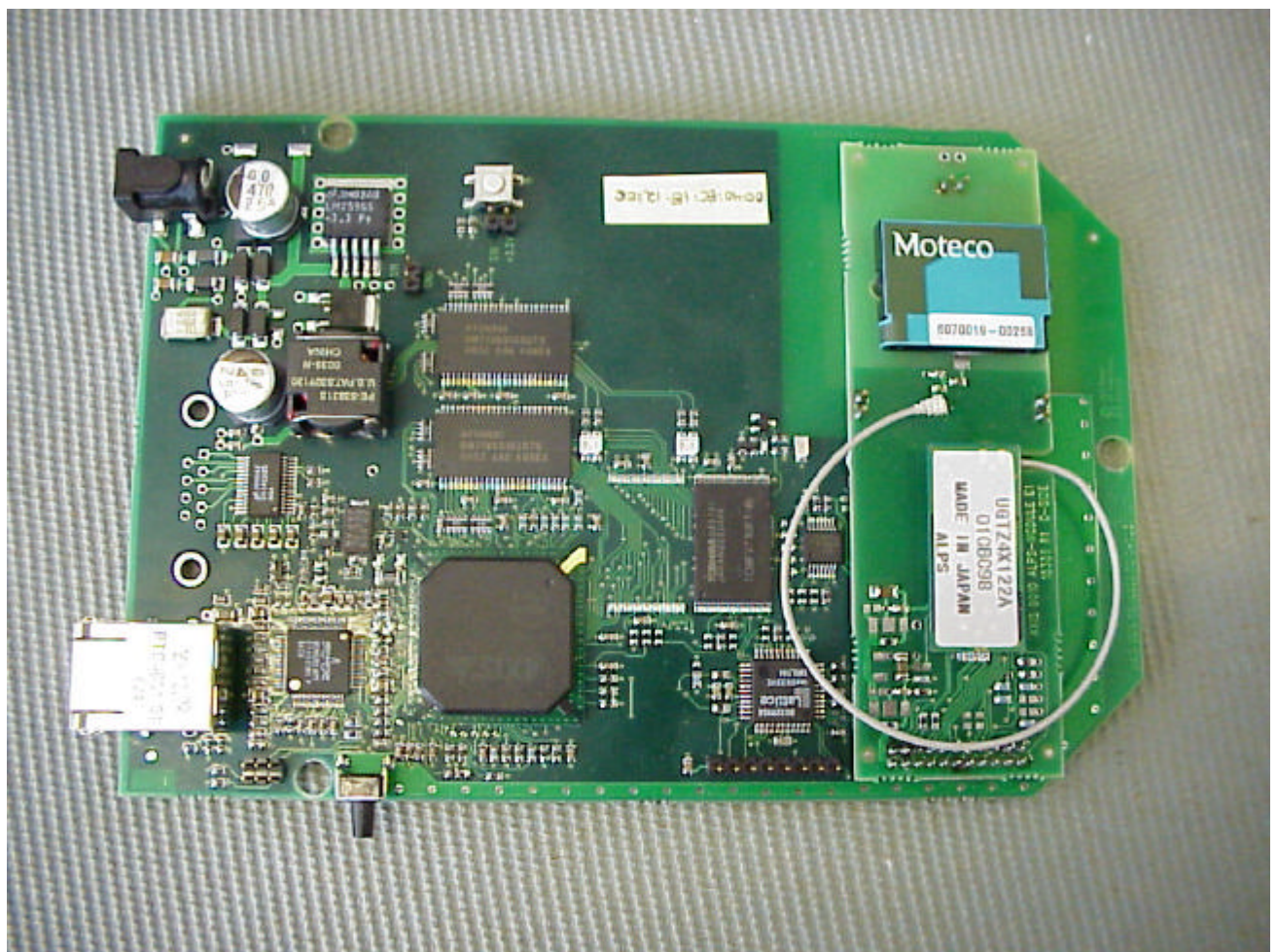


Equipment under test : AXIS 9010/ALPS
Ambient temperature : 20° C
Relative humidity : 31%

AXIS 9010/ALPS PHOTOGRAPHS OF THE EQUIPMENT

Photograph no.: 5

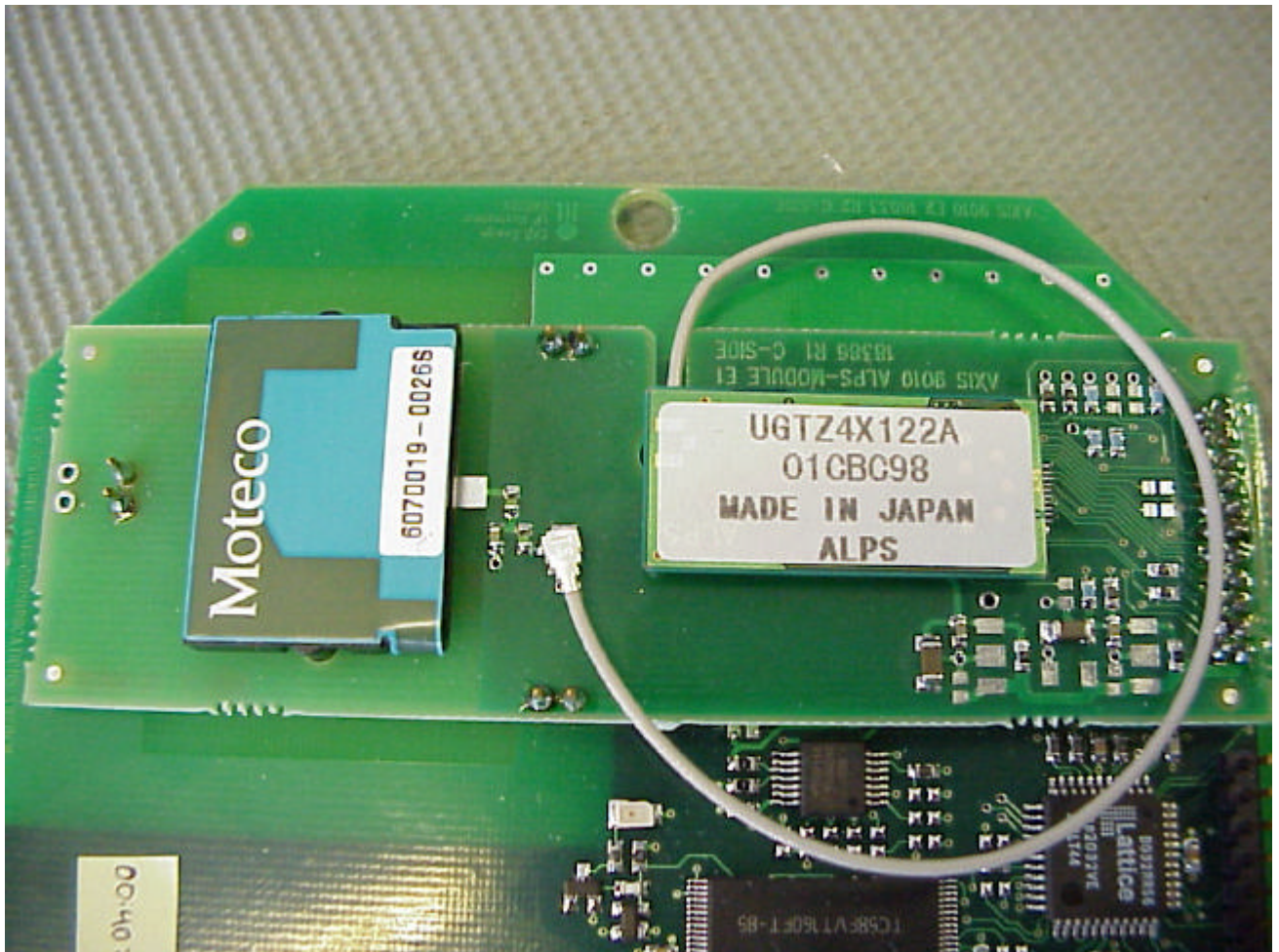


REFERENCE NUMBER(S) OF TEST EQUIPMENT USED
(for reference numbers see test equipment listing)

Equipment under test : AXIS 9010/ALPS
Ambient temperature : 20° C
Relative humidity : 31%

AXIS 9010/ALPS PHOTOGRAPHS OF THE AC-CONDUCTED MEASUREMENT.

Photograph no.: 6



REFERENCE NUMBER(S) OF TEST EQUIPMENT USED
(for reference numbers see test equipment listing)