

INTERTEK TESTING SERVICES

Report No.: 0417197
Model No.: M93259A

hp

Pursuant to FCC Part 15 Section 15.227 Emissions Requirement

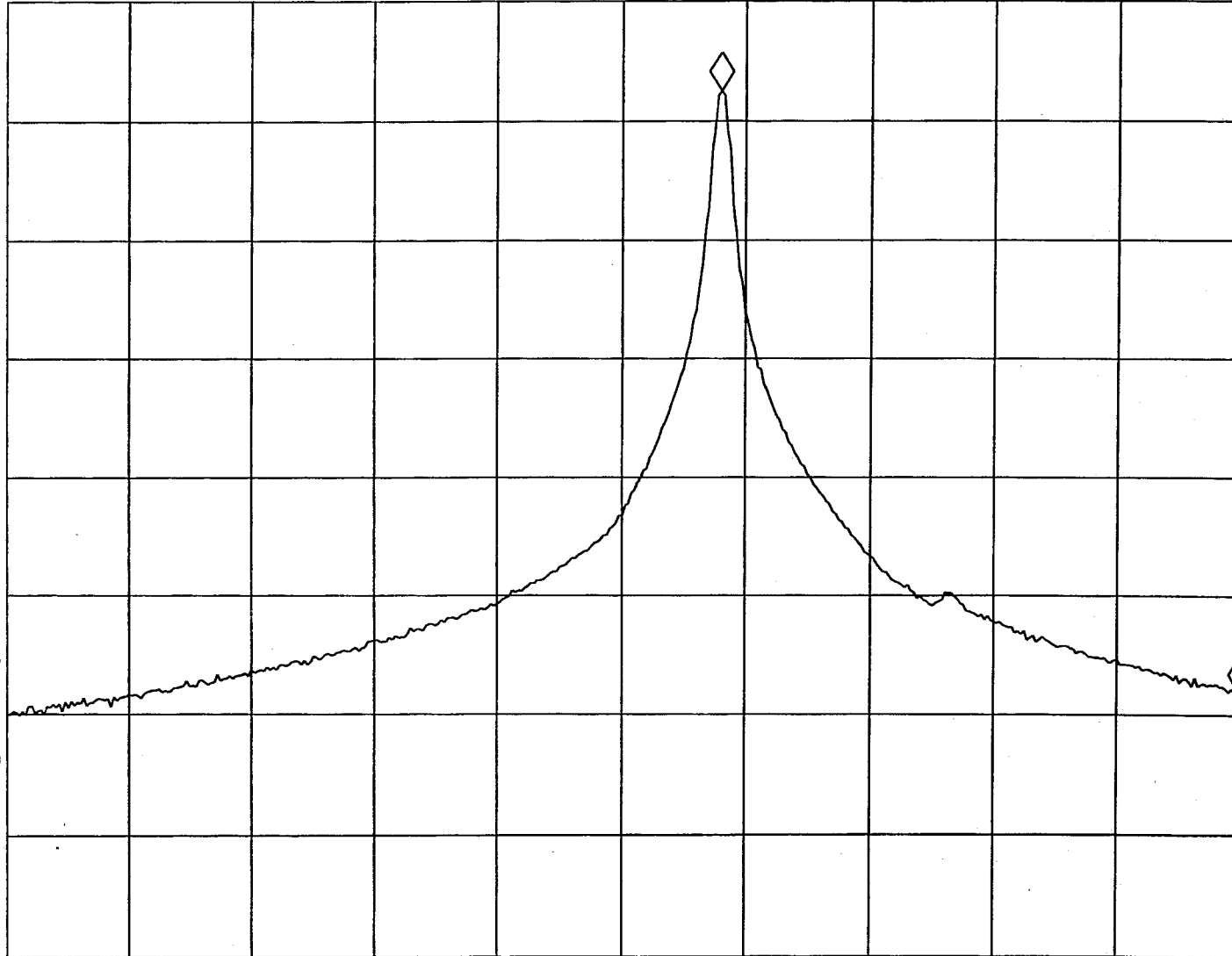
MKR 134.4 KHZ

REF -20.0 dBm

AT 10 dB

-50.74 dB

PEAK
LOG
10
dB/



VA SB
SC FC
CORR

Tested By: (Gary)

Date: 10/9/04

Checked By: (Ivan Wong)

Date: 23/9

Test Result: (Pass) / Fail / NA

START 26.9600 MHz

#RES BW 3.0 KHZ

VBW 3 KHZ

STOP 27.2800 MHz

#SWP 1.00 sec