

1

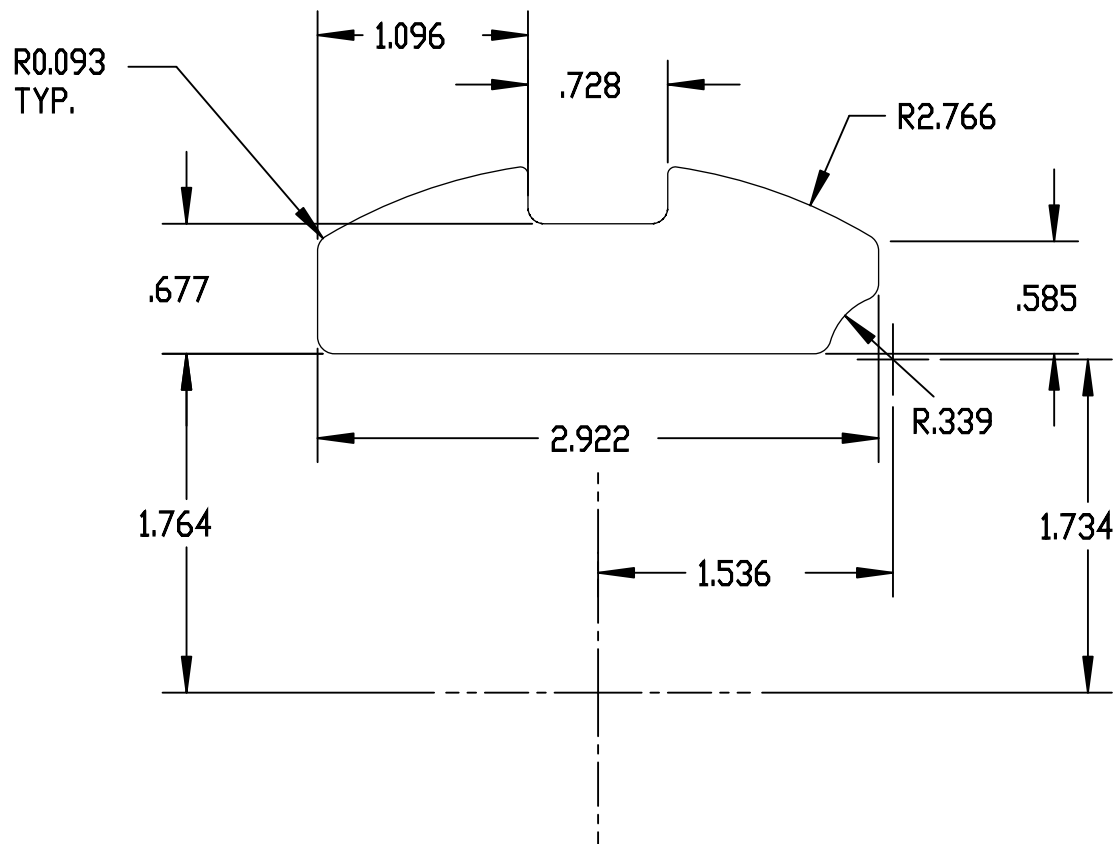
2

3

4

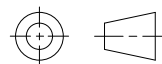
## REVISIONS

REV	DESCRIPTION	REVISED	DATE
A	ENGINEERING RELEASE	MGA	10/01/07

**DISTRIBUTION CONTROL SYSTEMS, INC.**945 HORNET DRIVE  
HAZELWOOD MO, 63042 USA

An ESCO Technologies Company

CONFIDENTIAL. The contents of the drawing are confidential and constitute the exclusive property of DISTRIBUTION CONTROL SYSTEMS, INC. ("The Company"). The drawing and its contents may not be made public in any manner, distributed or loaned to others or reproduced or copied either in whole or part without the prior written consent of the Company.

UNLESS OTHERWISE SPECIFIED  
DIMENSION ARE IN INCHES

TOLERANCES ON

DECIMALS	ANGLES
.X = ±.060	±1°
.XX = ±.015	
.XXX = ±.005	

DO NOT SCALE THIS DRAWING

TITLE:

**EMTR-3-FX  
FRONT LABEL**

DRAWING NO.

**Y72709-3**

REV:

**A**

DRAWN:

**MGA****10/01/07**

SIZE:

**A**

SHEET:

**1 OF 2**

DCSI PROPRIETARY INFORMATION

3

4

5

6

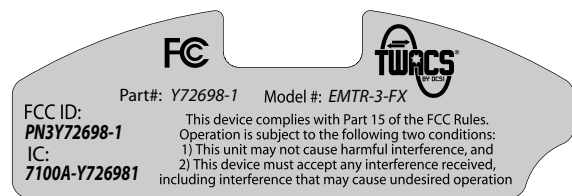
1

2

3

4

REVISIONS			
REV	DESCRIPTION	REVISED	DATE
A	ENGINEERING RELEASE	MGA	10/01/07



PMS COOL  
GRAY #3



PROCESS  
BLACK

	<b>DISTRIBUTION CONTROL SYSTEMS, INC.</b> 945 HORNET DRIVE HAZELWOOD MO, 63042 USA <i>An ESCO Technologies Company</i>		TITLE: <b>EMTR-3-FX FRONT LABEL</b>	
	CONFIDENTIAL. The contents of the drawing are confidential and constitute the exclusive property of DISTRIBUTION CONTROL SYSTEMS, INC. ("The Company"). The drawing and its contents may not be made public in any manner, distributed or loaned to others or reproduced or copied either in whole or part without the prior written consent of the Company.		UNLESS OTHERWISE SPECIFIED DIMENSION ARE IN INCHES TOLERANCES ON DECIMALS ANGLES .X = ±.060 ±1° .XX = ±.015 .XXX = ±.005	DRAWING NO. <b>Y72709-3AW</b>
DO NOT SCALE THIS DRAWING		DRAWN: MGA 10/01/07	SIZE: A	SHEET: 2 OF 2

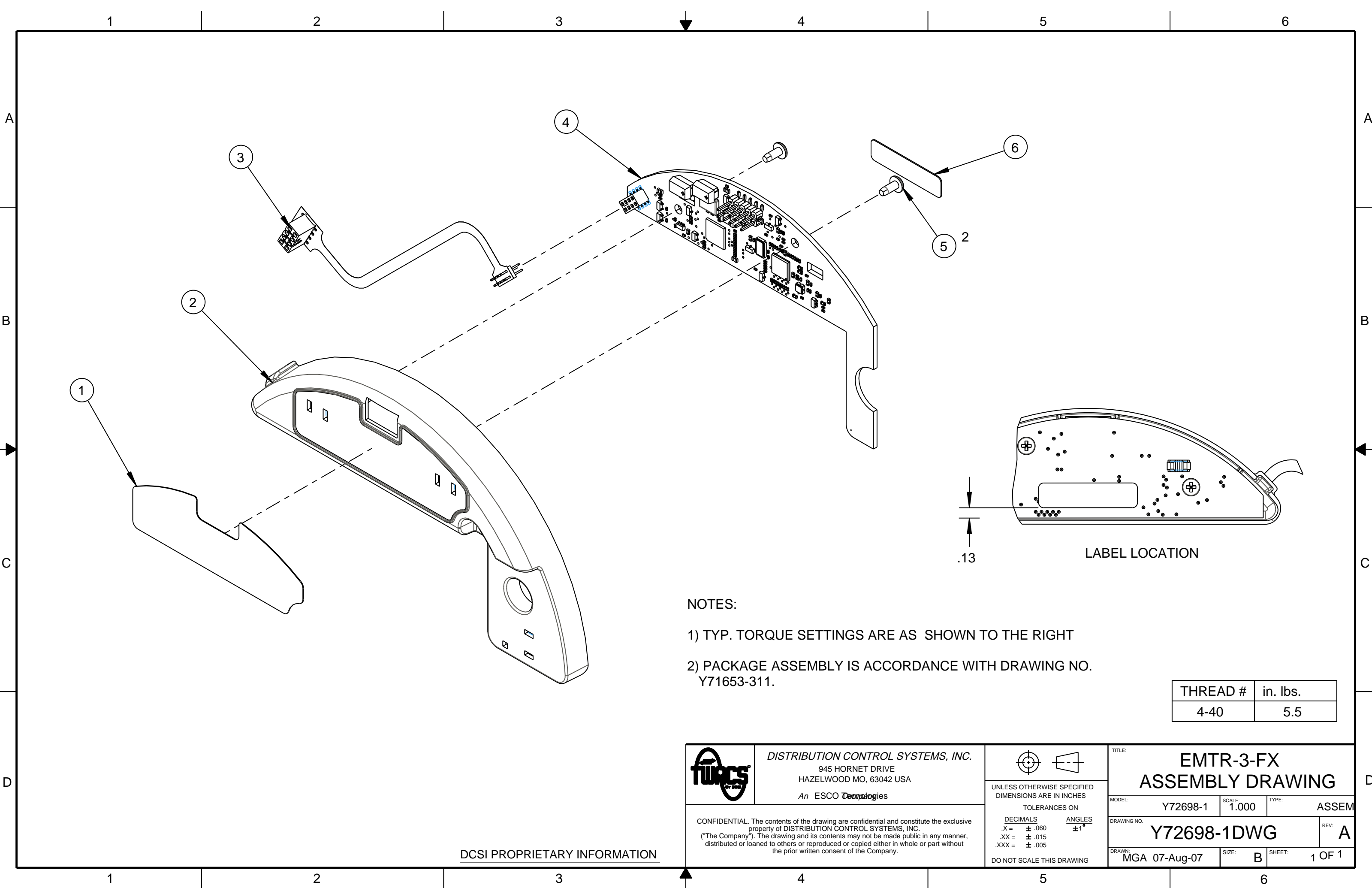
DCSI PROPRIETARY INFORMATION

3

4

5

6



NOTES:

- 1) TYP. TORQUE SETTINGS ARE AS SHOWN TO THE RIGHT
- 2) PACKAGE ASSEMBLY IS ACCORDANCE WITH DRAWING NO. Y71653-311.

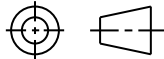
THREAD #	in. lbs.
4-40	5.5

DCSI PROPRIETARY INFORMATION



DISTRIBUTION CONTROL SYSTEMS, INC.  
945 HORNET DRIVE  
HAZELWOOD MO, 63042 USA  
An ESCO Technologies

CONFIDENTIAL. The contents of the drawing are confidential and constitute the exclusive property of DISTRIBUTION CONTROL SYSTEMS, INC. ("The Company"). The drawing and its contents may not be made public in any manner, distributed or loaned to others or reproduced or copied either in whole or part without the prior written consent of the Company.



UNLESS OTHERWISE SPECIFIED  
DIMENSIONS ARE IN INCHES  
TOLERANCES ON  
DECIMALS ANGLES  
.X = ± .060 ± 1°  
.XX = ± .015  
.XXX = ± .005  
DO NOT SCALE THIS DRAWING

TITLE: EMTR-3-FX  
ASSEMBLY DRAWING

MODEL: Y72698-1	SCALE: 1.000	TYPE: ASSEM
DRAWING NO. Y72698-1DWG	REV: A	
DRAWN: MGA 07-Aug-07	SIZE: B	SHEET: 1 OF 1