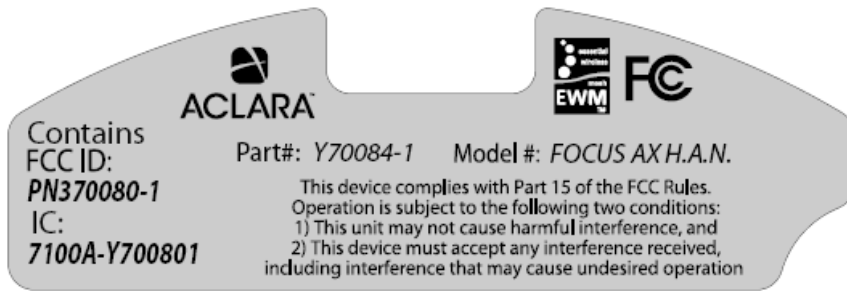


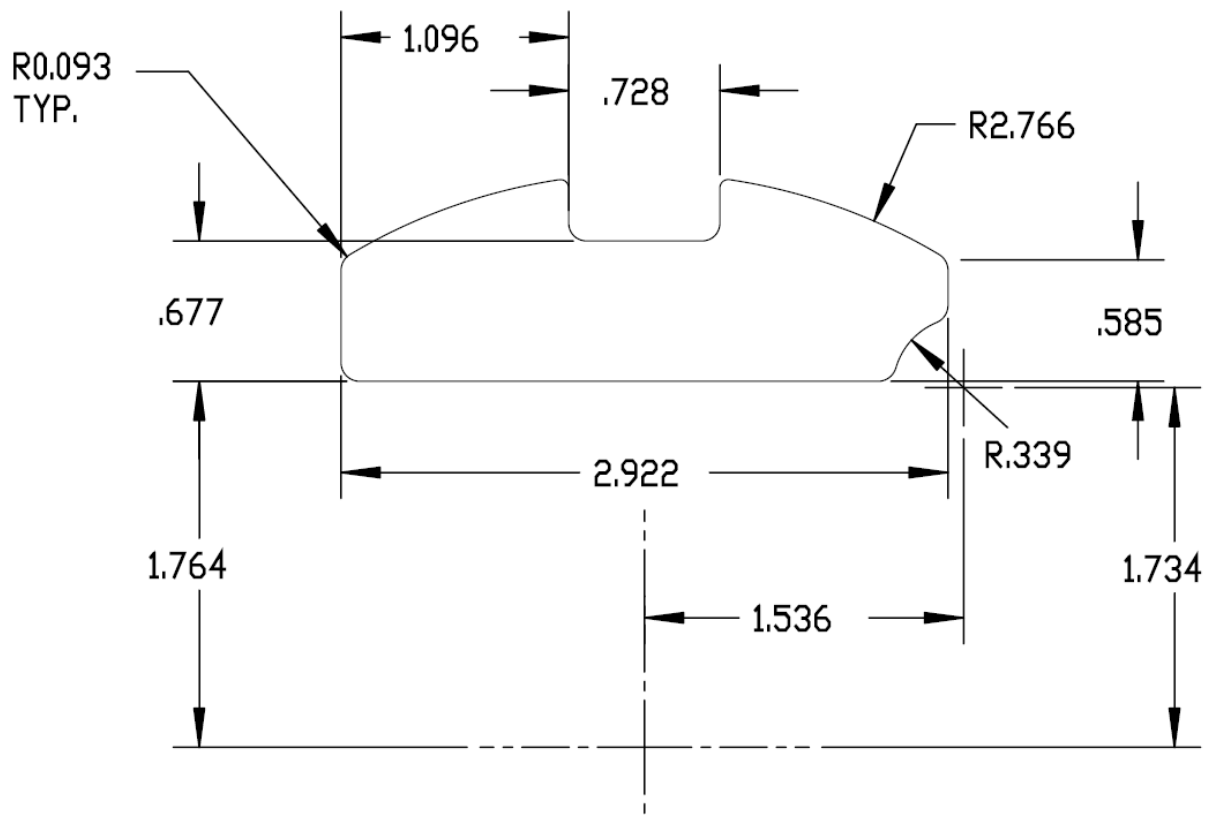
ID Label/Location

The Module is designed to be installed in electricity meters. This is a typical Label for the meters.



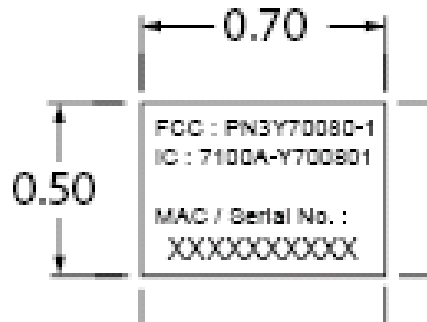
PMS COOL
GRAY #3

PROCESS
BLACK



Dimensions in inches

Drawing of label



NOTES:

1. LABEL SPECIFICATIONS:

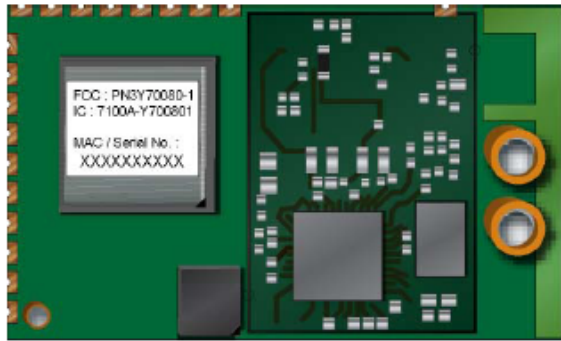
- * TYPE: POLYESTER LAMINATED WITH PRESSURE SENSITIVE ADHESIVE.
- * SUBSTRATE: .0025 TO .0050 THICK POLYESTER.
- * COLOR: GLOSS WHITE
- * ADHESIVE: .0015 TO .0050 THICK ACRYLIC.
- * ADHESIVE SHALL BE COMPATIBLE WITH METAL SUBSTRATES.
- * LABEL TO BE SUPPLIED ON A RELEASE LINER.
- * SERVICE TEMPERATURE RANGE: -40°C TO +121°C.
- * HUMIDITY: 0%-100% (NON-CONDENSING).
- * ONLY UV RESISTANT MATERIALS SHALL BE USED.
- * LABEL SHALL BE UL RECOGNIZED (UL969 OUTDOOR RATED).

2. PRINTING REQUIREMENTS:

- * COLOR: BLACK PRINTING ON WHITE BACKGROUND.
- * TEXT: ARTWORK TEXT - 5 PT / PRINTED TEXT - 6 PT.
- * ONLY UV RESISTANT MATERIALS SHALL BE USED.
- * HUMIDITY: 0%-100% (NON-CONDENSING).
- * LABEL PRINTING SYSTEM SHALL BE UL RECOGNIZED (UL969 OUTDOOR RATED).

3. SEE SECOND LAYER OF THIS ADOBE ILLUSTRATOR FILE FOR THE Y70122-1 ARTWORK.

Figure 1.1 HAN ZigBee Module label



Example of label as it appears on module.
Refer to Drawing Y70122-1-DWG for
actual label image.

Figure 1.2 Host device label