

Fast Flicks Digital Camera

User Manual

The package contains of below items :

Fast Flicks Camera	1 unit
Program CD	1 pcs
USB cable, 5 feet, transparent	1 pcs
TV cable, 4 feet, black color	1 pcs
User manual	1 pcs

Alkaline Batteries (3Ax3) are not included

Mode	Resolution	File Extension	File Size
VGA	640x480	JPEG	~120KB(Fine)/~60KB(Norm)
QVGA	320x240	JPEG	~80KB(Econ)
2X(Digital)	320X240	JPEG	~45KB
Movie	160 x 120	MOV	up to 980KB, 25~30s

Electromagnetic Compatibility Notice

This device complies with Part 15 of the FCC rules. Operation is subject to the following two conditions : (1) This device may not cause harmful interference, and (2) This device must accept any interference received, including interference that may cause undesired operation.

Warning : Changes or modifications to this unit not expressly approved by the party responsible for compliance could void the user's authority to operate the equipment.

This equipment has been tested and found to comply with the limits for a Class B digital device, pursuant to Part 15 of the FCC rules. These limits are designed to provide reasonable protection against harmful interference in a residential installation. This equipment generates, uses, and can radiate radio frequency energy, and if not installed and used in accordance with the instructions, may cause harmful interference to radio communications. However, there is no guarantee that interference will not occur in a particular installation.

If the unit does cause harmful interference to radio or television reception, which can be determined by turning the equipment off and on, the user is encouraged to try to correct the interference by one or more of the following measures:

- Re-orient or relocate the receiving antenna.
- Increase the separation between the equipment and receiver.
- Connect the equipment into an outlet on a circuit different from that to which the receiver is connected.
- Consult the dealer or any experienced TV/radio technician for help.

Battery Used for the Camera

- To power up the unit, the 3x3A batteries (not an old one, with power) should be put in the battery compartment.
 - Then slide the Power switch (top side) to On. Press the Power button. The LED is on. The LCD will turn on immediately.
 - Important : All memory will be erased and the TV settings reset to default once Power turned off.
 - Make sure it is power up by the battery before you connect it to the PC with the USB cable.
- In TV mode, recommend to change new batteries by the time battery low is detected.
 - When connected to USB, the unit will not go to standby mode. You can take photo or movie with USB cable connected to the PC in order to save battery power.
 - You cannot take photo with the USB connected to the MAC unit.
 - Battery life : Just for record mode, new alkaline batteries (eg. Energizer)

Low Battery detection started : ~ 2 hrs (Power On mode)

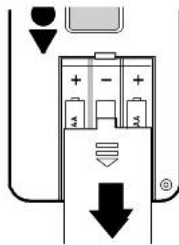
Replace the batteries within 30 minutes after low battery detection on.

Sleeping mode : ~ 600 hrs

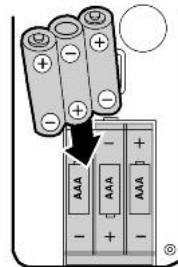
The first segment of the battery icon will blink if battery power is too low.

Please change to new alkaline batteries (3A size) as soon as possible. Always upload the images to the computer by the time battery low icon is prompted.

Take off the battery door.



Place the 3 x AAA alkaline batteries.



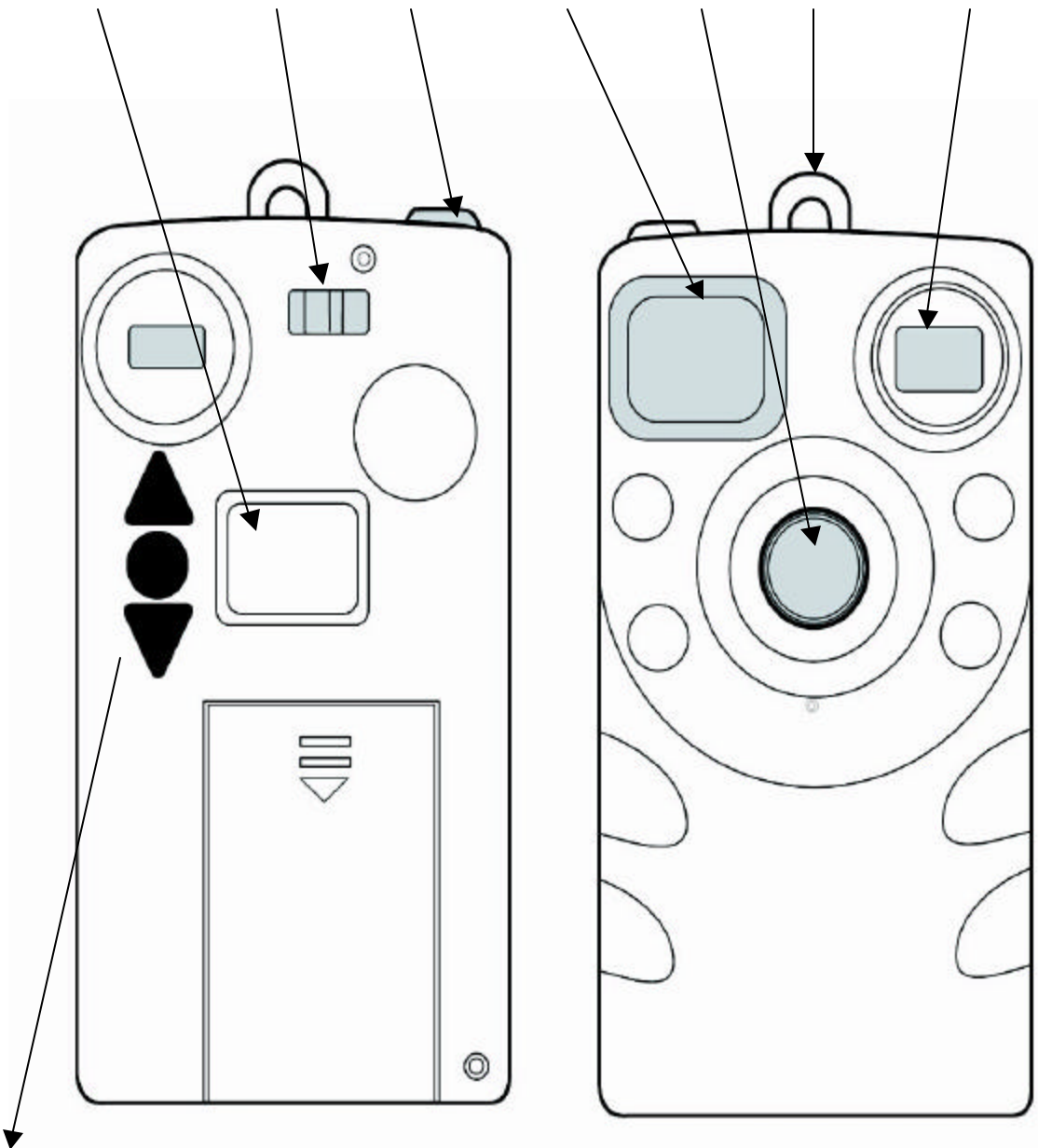
1. Slide the Switch from off to on .
2. Press the Standby button to turn on the LCD.

3. '0' is seen on the LCD means no photo is taken.
4. Go to standby mode by pressing the Standby button.
5. Or turn the switch to Off. This will save battery power but the internal memory is erased and the TV settings will be reset to default.

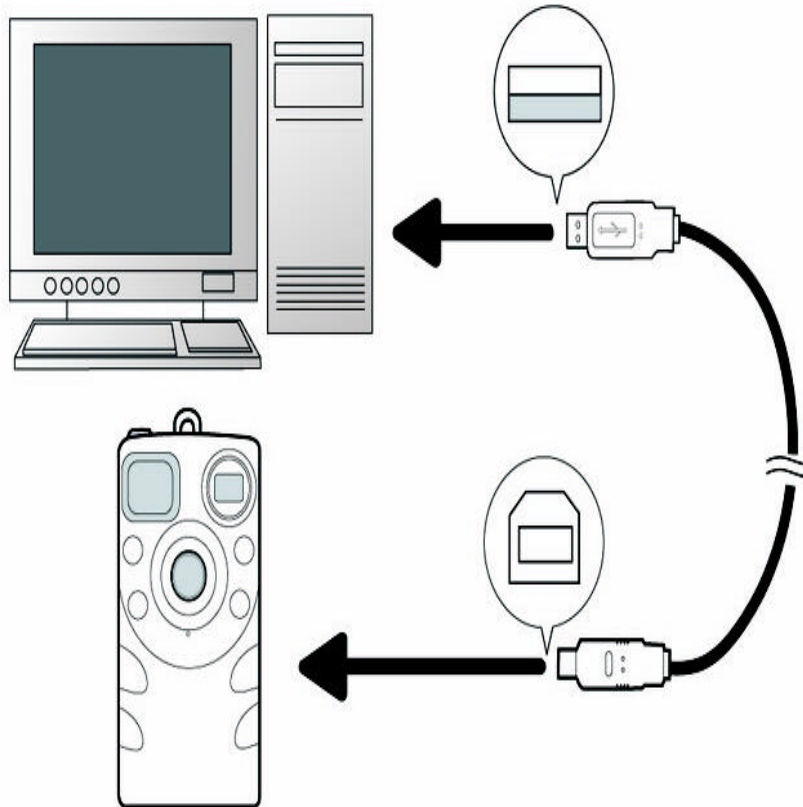
Nomenclature :

Main Power

Status LCD On/Off Shutter Mirror Lens Hook View Finder



Buttons (top to bottom) : Power/Standby, Select/Timer , Mode/Scroll.



Connect the PC/Mac to the camera unit by USB cable.

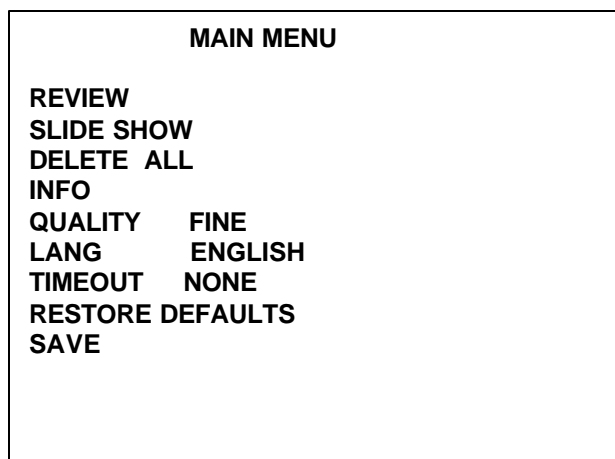
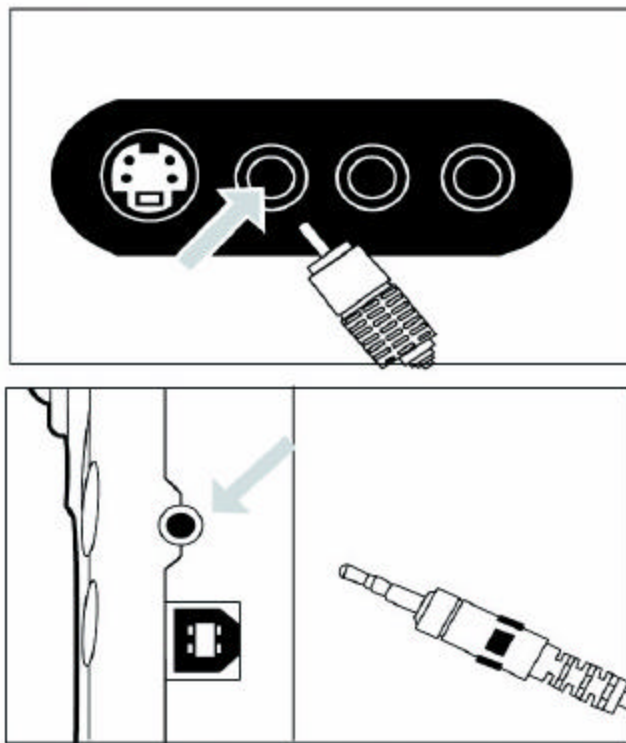
1. First, the PC/Mac is installed with the Camera driver (install the CD-ROM will put the driver to your PC).
2. Then power on the camera unit. You can see the status LCD is on.
3. After connecting the USB cable, 'PC' is seen on the right corner of the LCD.

TV Mode : Change the camera internal settings

You can change some settings of the camera by connecting the video cable to the TV set which has the video input.

Power up the unit after connecting the stereo jack of the camera to the RCA jack of TV (this is the Video input socket).

You can see the menu as below on the TV screen.



REVIEW – Reviewing Pictures

Press Shutter button to choose the 1st picture to display on TV screen

Press the Mode button to display the 2nd picture. It can continue this step to see all the pictures taken by the camera.

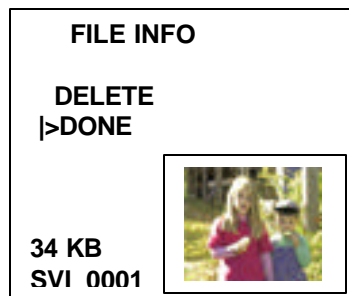
Until the last picture is seen, it will show 'Done'. Press Mode button again it will go to the 1st picture and continue to review the pictures stored.

If press the Shutter button after 'Done' is shown, it will escape to the main menu screen.

The sequence is starting from the last image file number.

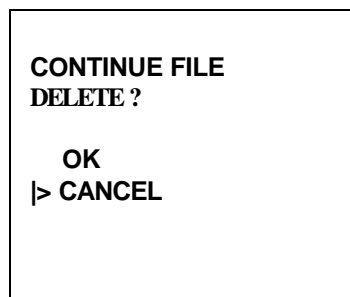
If a movie file is shown, you will see the first frame and the word "MOVIE."

If you press the Shutter button when the picture is displayed. It will display :



Press the Shutter button to choose delete function.

Then it will show as below :



Press Mode button to choose OK.

Press Shutter button to confirm.

The picture is then deleted in a second.

After that, it will display the next photo.

SLIDE SHOW – Display stored pictures one by one

Press Mode button to choose SLIDE SHOW. Press Shutter button to confirm.

The 1st photo is uploaded to the screen in 3 to 5 seconds. It will display the photo for 5s.

The next photo is automatically uploaded and repeat the process until all the pictures are displayed.

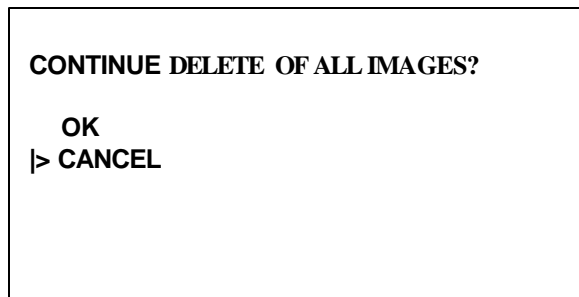
‘Done’ is displayed in the end of the slide show. Press Shutter button to Main Menu.

The sequence is starting from the first image file number.

DELETE ALL – Delete all the pictures stored

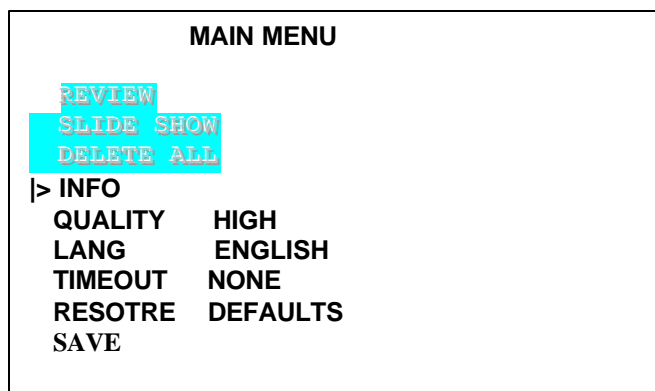
Press Mode button to choose DELETE ALL Press Shutter button to confirm.

You can see the screen as below :



Press Mode button to choose OK. Press Shutter button to confirm.

The main menu is shown as below :



The REVIEW, SLIDE SHOW & DELETE ALL are changed to shadow color and the function is disabled. Because there is no photo in the memory to do these functions.

INFO – Information of internal memory

Press Mode button to choose INFO. Press Shutter button to confirm.

You can see the screen as below : the numeric values are just for reference.

INFO	
BATTERY	FULL
VERSION	X.XXX
MEMORY	
USED	23KB
FREE	6077KB
SIZE	6100KB
> DONE	

Press Shutter button to confirm Done. It will go back to main menu.

BATTERY	FULL means the battery voltage is >3.5V. VERY LOW means the battery voltage is <3.5V
VERSION	It is the firmware code number.
MEMORY	Total memory SIZE = USED + FREE

FORMAT – Select the Fine, Normal and Economy, Zoom x2, Movie

Press Mode button to choose FORMAT. It is preset to be FINE quality mode.

Press Shutter button to confirm change. The word 'FINE' is changed to green color.

FORMAT FINE

Press the Mode button once, it will show NORMAL. Press Shutter button to confirm. It will change to black color word : FORMAT NORMAL.

Repeat above step by pressing Shutter and then Mode button. It will show :

FORMAT ECONOMY.

Press Shutter button to confirm if you want to use Economy mode to save memory.

Repeat above step by pressing Shutter and then Mode button. It will show :

FORMAT **Zoom x2.**

Press Shutter button to confirm if you want to use 2X mode to save memory.

Repeat above step by pressing Shutter and then Mode button. It will show :

FORMAT **Movie.**

Press Shutter button to confirm if you want to use Movie mode to save memory.

LANG – Select English, Spanish, Deutch, French or Japanese

Press Mode button to choose LANG. It is preset as ENGLISH.

Press Shutter button to confirm change of languages.

Press Mode button once, the other language is shown.

Press the Shutter button to confirm. Select SAVE to update the language.

TIMEOUT (STANDBY) – Select the auto off time

Press Mode button to choose TIMEOUT.

Press Shutter button to confirm change of timeout.

Press Mode button to toggle between 5 different values of auto off time :

90 SEC, 60 SEC, 30 SEC, 15 SEC, NONE.

Press Shutter button to confirm after selection. NONE means no timeout. The camera will not auto off.

It is recommended to use timeout (default as 60s) to save battery life.

RESTORE DEFAULTS – Reset to the ex-factory settings

Press Mode button to choose RESTORE DEFAULTS.

Press Shutter button to confirm reset to the ex-factory settings.

Actually, 4 settings are preset as below.

FORMAT	FINE
LANG	ENGLISH
TIMEOUT	60 SEC
TV SYSTEM	NTSC

SAVE – Save the settings you have changed.

If you have changed the settings in the TV screen, you need to select the ‘SAVE’ function and press the Shutter button to confirm.

Status LCD display

Icons in the status LCD :

Battery icon : 2 Levels of power input

3-digit 7 segment display : Count Up from 0 to 999. (if over 999, it will show 999)

NTSC, PAL : TV system selection

Movie icon : Show movie mode.

FINE , NORM, ECON : Photo Quality

2X : Zoom function for TV mode.

MEM icon : It will blink if the memory is full.

Memory blocks : Total 4 blocks to show the approximate memory size left.

Rubbish bin icon : It will blink if you select it to erase all the memories.

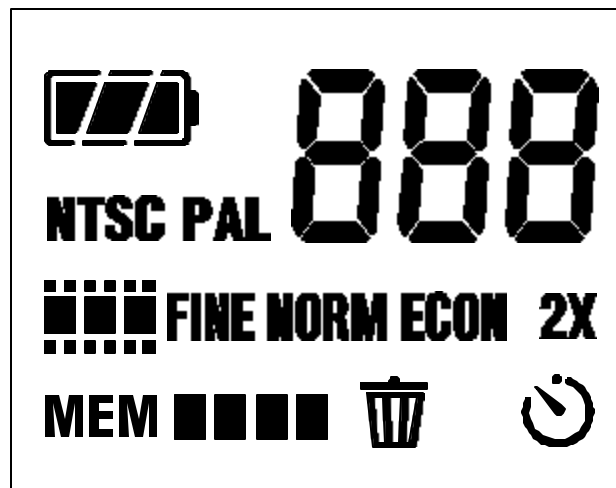
Timer icon : It will be on if you press the Select button in the Record mode.

Messages shown on the 7-segment display :

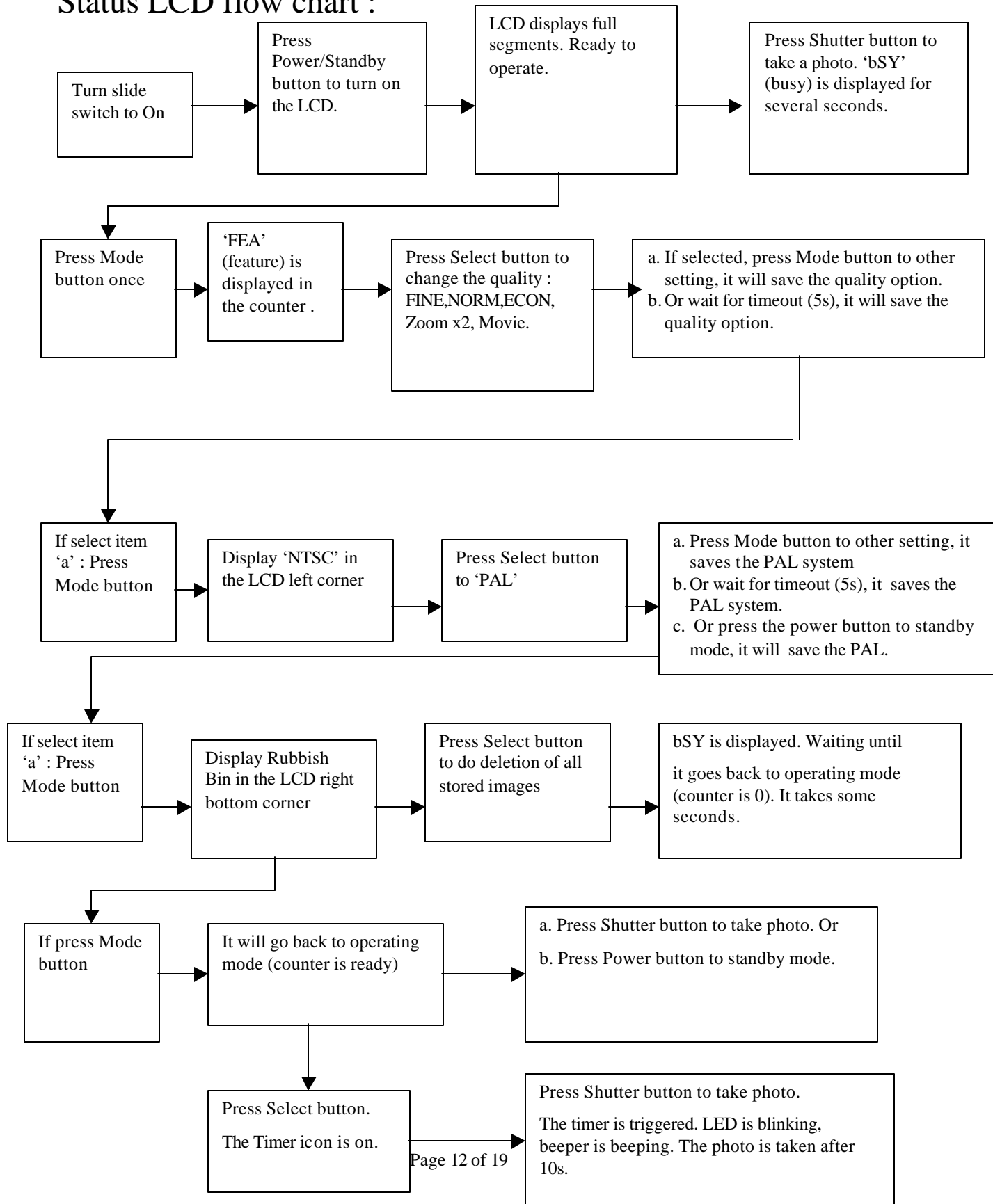
FEA Camera mode selection : FINE,NORM,ECON,2X, Movie

bSY Busy signal. The unit is doing task. Wait until it disappears.

PC It is seen if you connect the unit to the PC with the USB cord.

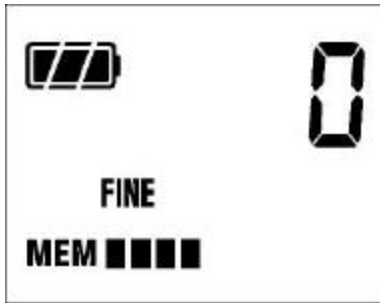


Status LCD flow chart :



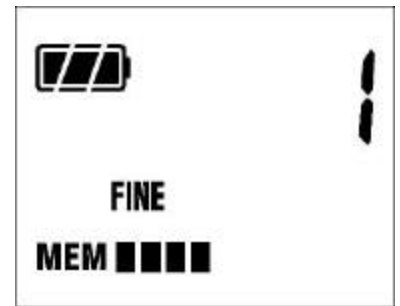
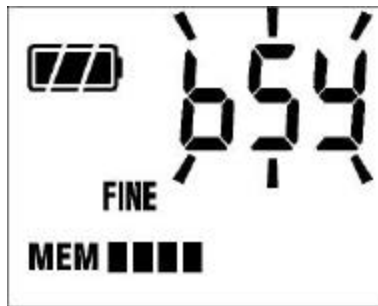
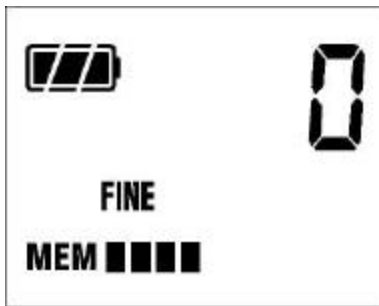
1. Operating mode : Ready to take a photo.

Just put in the batteries, turn the slide switch from off to on and press the Power button once. The LCD displays as below.



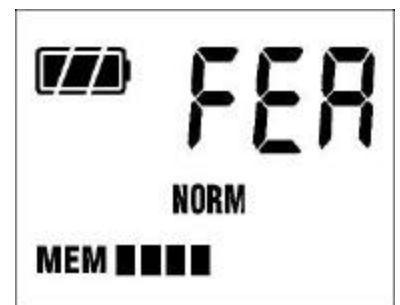
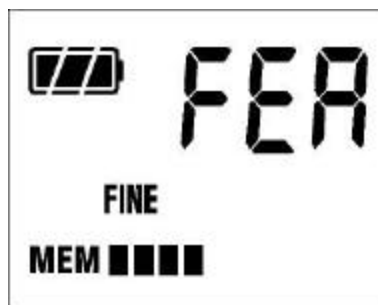
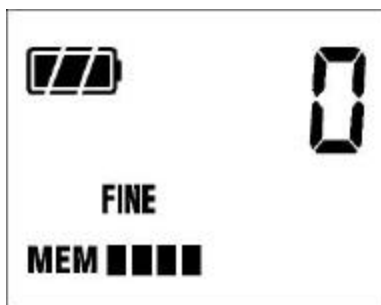
2. Take a photo

As the unit is turned on, press the shutter and it will take a photo. You can see the film counter is increased from 0 to 1.

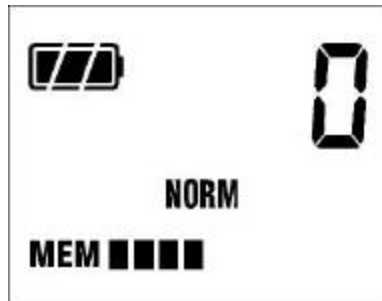


3. Change Picture quality

If you press the Mode button once, you see FEA, press the Select button once, it changes from Fine to Norm (Normal).

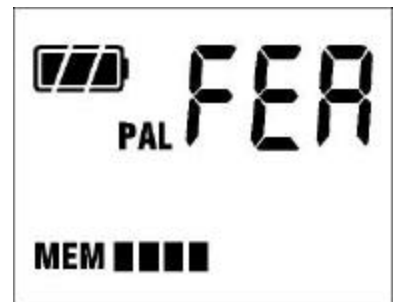
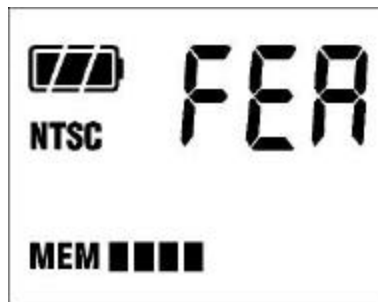
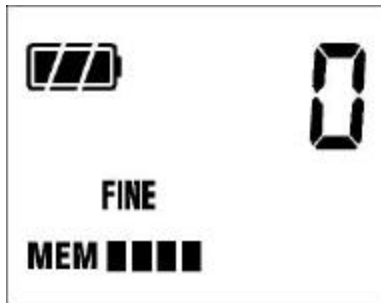


Then wait for about 5s, it will go back to operating mode but the picture quality is changed to NORM (Normal). This is similar for changing to Econ, Zoom x2 and Movie modes.



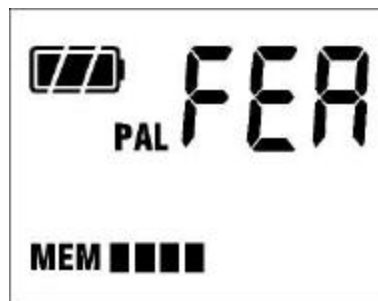
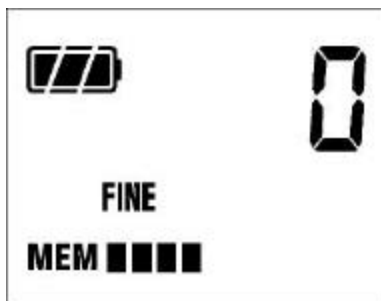
4. Change TV system

Press the Mode button two times, it will see the NTSC icon, press the Select button and PAL is found.



Wait for 5s, or press Mode button 2 times or press Power button 2 times, it will save the PAL system

Checking the TV system : Press Mode button 2 times, you can see PAL is set.

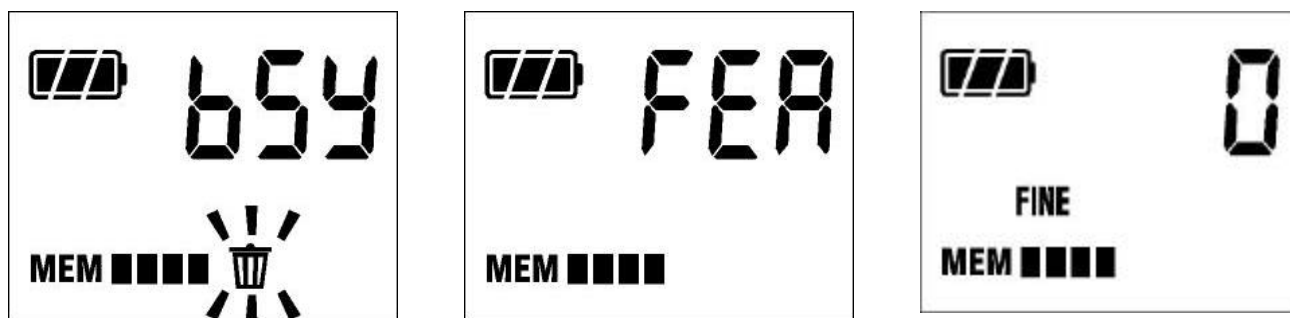


5. Delete All the photos.

Press Mode button 3 times, you see the Rubbish bin icon, press the Select button to do

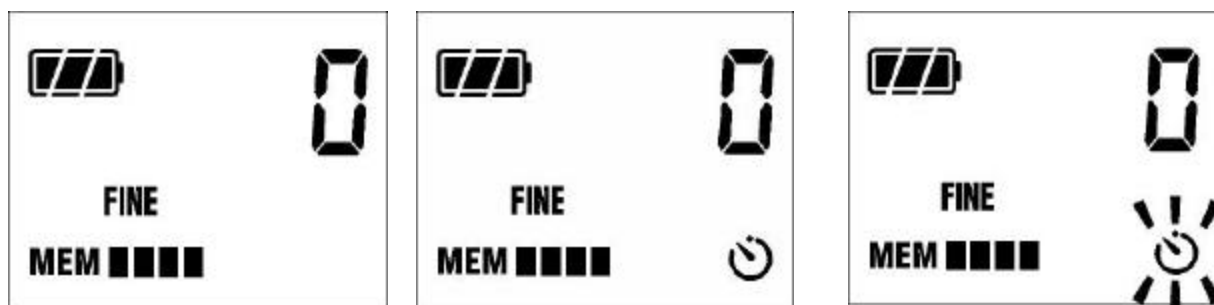


delete all function. The Rubbish bin icon is blinking. After 10s, it will show 0.



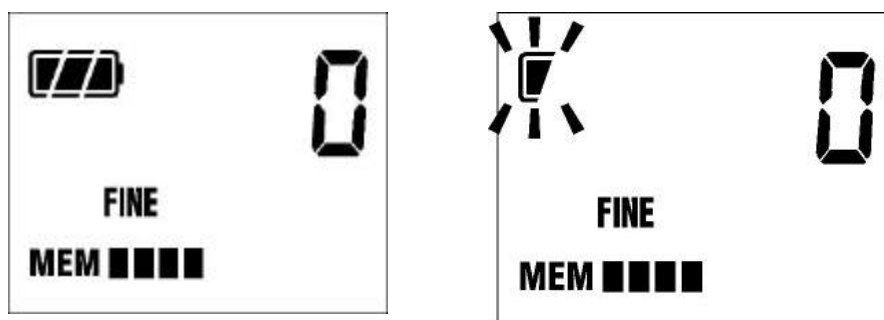
6. Self Timer mode :

Press the Select button, you see the Timer icon, press the Shutter button, the Timer icon will blink and a photo is taken after 10s. The beeper is 'Do,Do..' and the LED is blinking.



Battery Low Detection

When the battery power is detected as Low, the last segment of the battery icon is blinking.



Remarks :

ZOOM (2X)

The photo taken by 2X mode is the middle part of the VGA total size. This is used for TV mode. You can see a 2X image on the TV screen.

Green LED indication :

Blinking	Busy or self timer is started (beeper sound 'do,do' is heard)
On	Ready to take a photo, or taking a movie.

TV SYSTEM : PAL OR NTSC

NTSC system is the preset TV system for this camera. You can change this to PAL system. Press Mode button 2 times, the NTSC icon is seen. Press the Select button one time it will toggle to PAL. Press the Mode button until you see the film counter. When you insert the TV cable jack to the camera, the TV system icon will be displayed.

Self Timer

In the operating mode, press the Select/Timer button to select Timer mode. The timer icon is displayed in the status LCD right bottom corner.

Press the shutter button to take a photo and trigger the camera's timer. After 10 seconds, the image is captured. The LED is blinking and the buzzer sound is beeping during the countdown time. You would better to use a tripod to fix the camera.

Recording a Movie

You can select the Movie mode in the Quality selection mode. Press the Mode button once, press the Select button 4 times, you can see the Movie icon on. Press Mode button until you see the film counter. Now the Movie mode is set.

Press the shutter and hold, you can hear beep beep sound. Now the movie is being taken and saving to the internal memory. It will stop after say 30s. You can stop at any time before it is automatically stopped.

The file size is about 980KB for the maximum movie play back time. The time is vary from about 25s to 30s related to the image information.

Host Software

Install the Fast Flicks Digital Camera driver to PC

Insert the CD ROM to the CD ROM drive of the PC. It will do driver installation after completion of Arcsoft programs installation. Reset the PC is required. Open the Windows Explorer and you can find the driver in the folder of 'My Computer' . You can right click the mouse button to send the driver to the desktop as a short cut.

Connect the camera with the USB cord. Power on the camera unit. Click on the driver icon on the desktop. The image files are read by the PC. You can select all images first. Then click the right button of the mouse. Select Copy. Goto another folder in the hard drive. Press Control V to paste the images to this folder. Then you can edit the images by the Arcsoft program PhotoStudio or other similar programs.

- If the USB cord is not connected and the driver is clicked, it will try to search for the COM port. Please wait until it comes back. Click Confirm to exit.
- You must put in the battery in order to power on the unit and connect to the PC.

Install the My Camera driver to MAC

Insert the CD-ROM to the CD-ROM drive of the MAC unit. Click on the CD-ROM icon on the desktop. There is a Driver folder. Click on it and you can find the driver My Camera. Click on it to do installation.

After installation, you can find the My Camera icon on the desktop. Plug in the camera which some images taken and then click on this icon. It will open the dialog panel with the image files. Click on it or select all images. It will ask you to save the image one by one. You can select another folder instead of the My Camera folder. A window box is shown to help you.

Install the Quicktime 4.0TM

In the CD-ROM, there is the Quicktime folder. Double click on the Qt.exe file, it will do installation of Quicktime 4.0TM if you have no such program. Follow the instructions and agree the licence document. When the Svi_xxxx.mov file is clicked, it will automatically open the Quicktime Player and you can see the first frame of the movie file. Click the Play icon to start.

PRODUCT SPECIFICATIONS

Hardware :

1. Resolution	640x480 (VGA), 320x240 (QVGA),
2. Lens	Plastic, two elements, F/3, 35mm(Equiv)
3. Memory Internal	8MB SDRAM (~6MB for photo storage)
4. Number of Pictures	>50 Fine, >80 Normal, Economy
	>100 2X
5. View Finder	Yes. Also a mirror in the front cabinet.
6. Status LCD	Yes.
7. Buzzer	Yes.
8. LED	One Green LED
9. Power Switch	Yes.
10. Picture Retention	By the main battery power.
11. Battery Power	Alkaline AAA battery x 3 (4.5V)
12. Auto-Off	15s/30s/60s/90s/none
13. Upload speed	<0.5 second per photo
14. TV video out	NTSC or PAL selectable
15. White Balance	Auto white balance & exposure
16. File format	JPEG
17. Focusing range	0.6m to 10m (fixed focus lens)
18. Erase mode	Delete all. (Delete any one by TV/PC mode)
19. Low Battery Detect	Yes. Two levels.
20. Operating conditions	0 ~ 40 deg C.
21. Dimension	120x63x32mm (HWD)
22. Net Weight	100g w/o battery

Software : For both PC and Mac computer

1. Quicktime 4.0	Play the movie files
2. Photo Printer	Print the photo in simple steps
3. Photo Fantasy	Role play program
4. Photo Studio	Photo editing program
5. Camera Driver	USB hot plug driver

System Requirements :

1. Pentium 166MHz or higher.
2. Operation System : PC Win98,98SE, 2000, NT. MAC OS 8.6, 9.0.
3. 64MB SDRAM minimum.
4. 300MB hard disk capacity.
5. With functionable USB port

Responsible Party in USA :

Legal Company Name : Timlex International Ltd.

Address : 8851 Bald Eagle Drive, Blaine, Wa, USA. 98230.

Phone, Fax : 1-360-371-5008, 1-360-371-8509

Contact Person : Edward Pearson