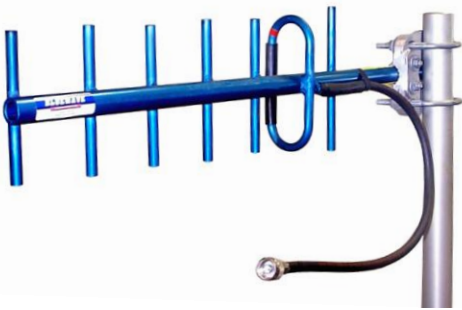


BLUEWAVETM

THE NEW STANDARD

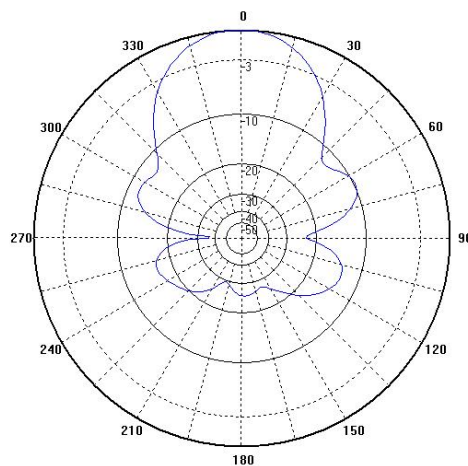
BW947Y

806-985 MHz

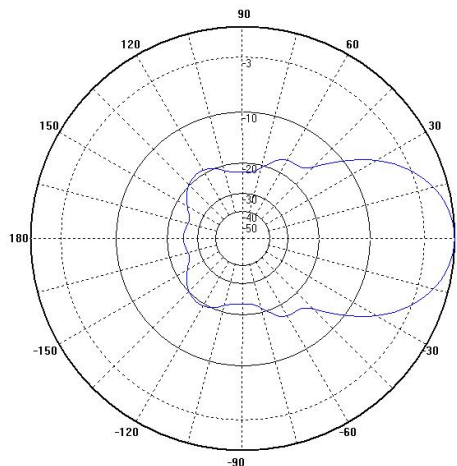


ELECTRICAL SPECIFICATIONS

FREQUENCY RANGE	806-985 MHz
NOMINAL GAIN (typical)	10 dBd
BANDWIDTH VSWR 1.5	70-90 MHz
FRONT TO BACK RATIO	20 dB
HORIZONTAL BEAMWIDTH (at half power points) for vertical polarization	50 °
VERTICAL BEAMWIDTH (at half power points) for vertical polarization	45 °
POWER RATING	200 W
LIGHTNING PROTECTION	DC ground
TERMINATION	N-Male



HORIZONTAL PATTERN FOR VERTICAL POLARIZATION



HORIZONTAL PATTERN FOR HORIZONTAL POLARIZATION

ORDERING INFORMATION

PART#	FREQUENCY
BW947Y-1	806-896 MHz
BW947Y-2	890-960 MHz
BW947Y-3	945-985 MHz

MECHANICAL SPECIFICATIONS

LENGTH	24" (610 mm)
WIDTH @ 806 MHz	6.8" (173 mm)
WEIGHT	1.5 lbs. (.7kg.)
RATED WIND VELOCITY	125 mph (201 kph)
RATED WIND VELOCITY	(with .5 inch radial ice) 120mph (193 kph)
LATERAL THRUST @ 100 mph WIND VELOCITY	6 lbs. (2.7 kg)
PROJECTED AREA (flat plane equivalent)	.24 ftsq (.022 msq)

MOUNTING INFORMATION

C1001 mounting bracket complete with hardware is supplied to mount BW947Y on a 1.50-2.38" Dia. mast. Allows horizontal or vertical polarization.

The **BW947Y** has been engineered to meet the requirements of a high gain, broadband, premium quality antenna. This antenna provides 10 dBd gain and operates in the **806-985 MHz** range. The **BW947Y** is manufactured using high strength 6061-T6 aluminum to withstand heavy ice, high wind and other extreme conditions. Our patented dipole design has an integral feed line and is welded to the boom for extra strength. This also eliminates misalignment or fastener problems. The entire antenna is anodized for appearance and corrosion resistance. A heavy duty clamp is supplied which easily permits horizontal or vertical polarization. The **BW947Y** is available with custom feed-line lengths up to 50 ft on special order.