

T2

■ Pantone186C

外盒

尺寸：100Lx160Hx37W_mm

材質：60T亮銀箔卡

加工：4色+1Pantone色

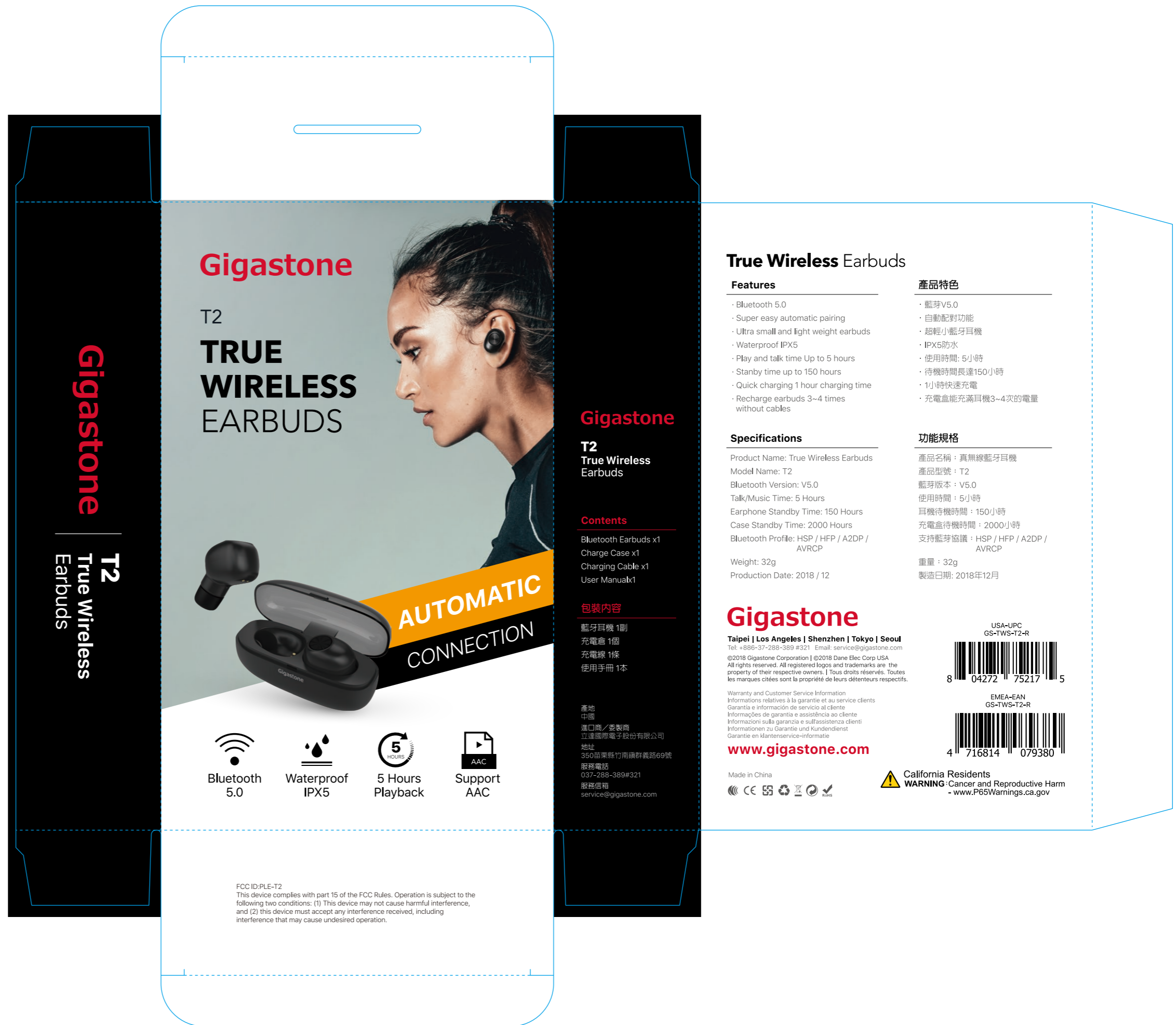
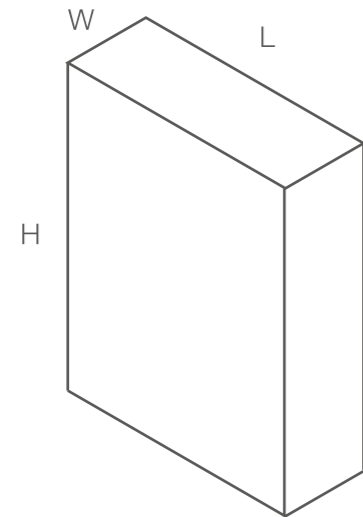
軋型

糊邊

印白墨

霧P

打凸



Gigastone

T2

TRUE WIRELESS EARBUDS



Bluetooth 5.0



Waterproof IPX5



5 Hours Playback



Support AAC

Gigastone

T2 True Wireless Earbuds

Contents

- Bluetooth Earbuds x1
- Charge Case x1
- Charging Cable x1
- User Manual x1

包裝內容

- 藍牙耳機 1副
- 充電盒 1個
- 充電線 1條
- 使用手冊 1本

產地

中國

進口商/製商

立達國際電子股份有限公司

地址

350苗栗縣竹南鎮群義路69號

服務電話

037-288-389#321

服務信箱

service@gigastone.com

True Wireless Earbuds

Features

- Bluetooth 5.0
- Super easy automatic pairing
- Ultra small and light weight earbuds
- Waterproof IPX5
- Play and talk time Up to 5 hours
- Standby time up to 150 hours
- Quick charging 1 hour charging time
- Recharge earbuds 3~4 times without cables

產品特色

- 藍芽V5.0
- 自動配對功能
- 超輕小藍芽耳機
- IPX5防水
- 使用時間: 5小時
- 待機時間長達150小時
- 1小時快速充電
- 充電盒能充滿耳機3~4次的電量

Specifications

Product Name: True Wireless Earbuds
 Model Name: T2
 Bluetooth Version: V5.0
 Talk/Music Time: 5 Hours
 Earphone Standby Time: 150 Hours
 Case Standby Time: 2000 Hours
 Bluetooth Profile: HSP / HFP / A2DP / AVRCP
 Weight: 32g
 Production Date: 2018 / 12

功能規格

產品名稱：真無線藍芽耳機
 產品型號：T2
 藍芽版本：V5.0
 使用時間：5小時
 耳機待機時間：150小時
 充電盒待機時間：2000小時
 支持藍芽協議：HSP / HFP / A2DP / AVRCP
 重量：32g
 製造日期：2018年12月

Gigastone

Taipei | Los Angeles | Shenzhen | Tokyo | Seoul
 Tel. +886-37-288-389 #321 Email: service@gigastone.com
 ©2018 Gigastone Corporation | ©2018 Dane Elec Corp USA
 All rights reserved. All registered logos and trademarks are the property of their respective owners. | Tous droits réservés. Toutes les marques citées sont la propriété de leurs détenteurs respectifs.

Warranty and Customer Service Information
 Informations relatives à la garantie et au service clients
 Garantia e información de servicio al cliente
 Informações de garantia e assistência ao cliente
 Informazioni sulla garanzia e sull'assistenza clienti
 Informationen zu Garantie und Kundendienst
 Garantie en klantenservice-informatie

www.gigastone.com

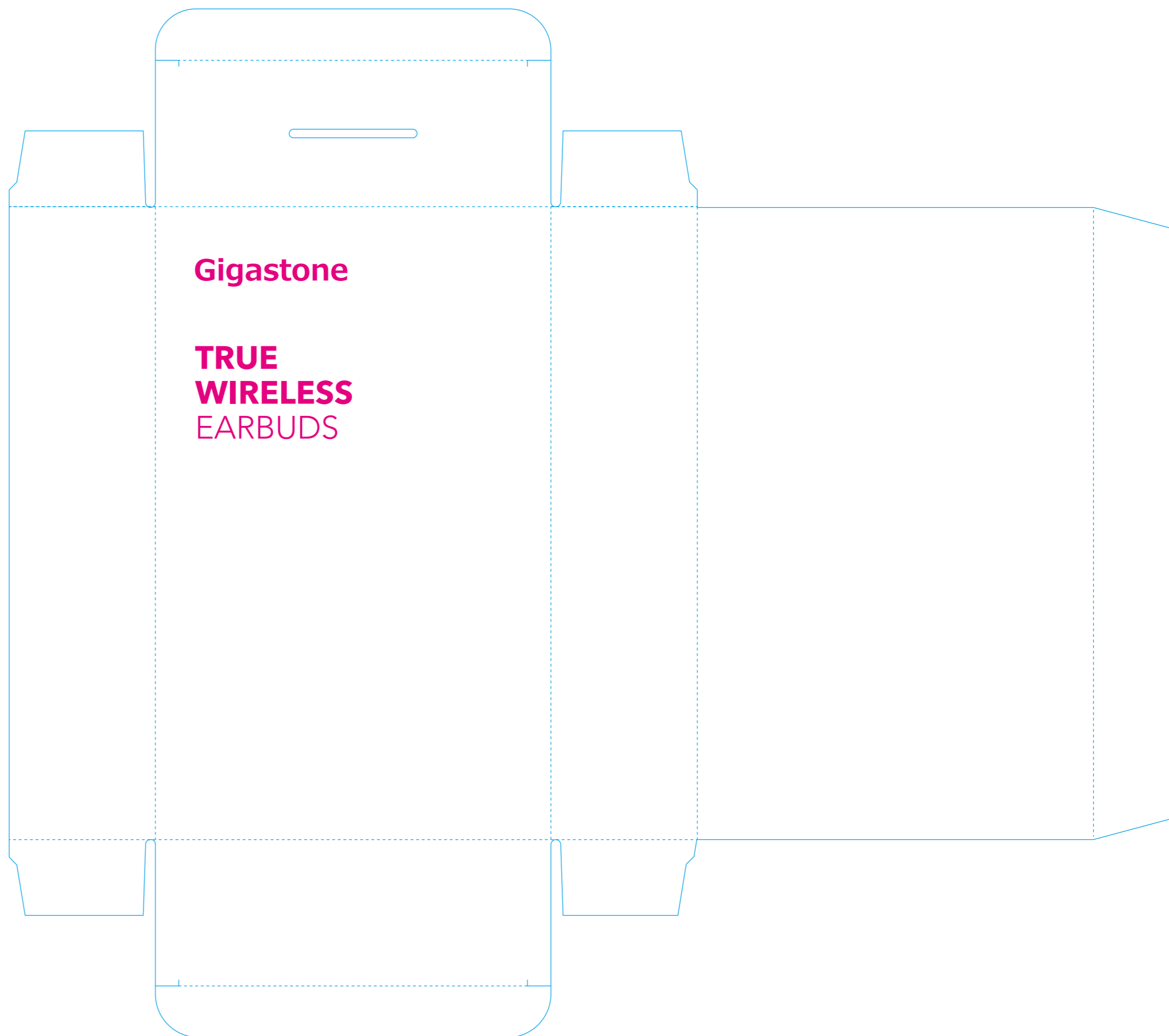
Made in China



California Residents
 WARNING: Cancer and Reproductive Harm
 - www.P65Warnings.ca.gov

FCC ID: PLE-T2
 This device complies with part 15 of the FCC Rules. Operation is subject to the following two conditions: (1) This device may not cause harmful interference, and (2) this device must accept any interference received, including interference that may cause undesired operation.

■ 打凸



■ 白墨

