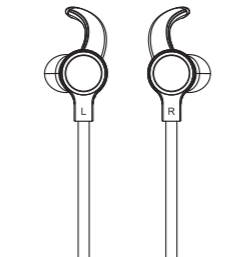


GB-5420B Bluetooth Headset

To assure the finest performance, please read this user's manual carefully. Keep it in a safe place for future reference.



- ★ Item: GB-5420B
- ★ Driver diameter: 9mm
- ★ Bluetooth version: V4.2
- ★ Operation distance: 10m
- ★ Battery capacity: 120mAh
- ★ Impedance: 25Ω±15%
- ★ Music time: 7 - 8 hours
- ★ Sensitivity: 93dB±3dB

Power on/Pairing/Power off

1. Long press the power button for about 3 seconds, hearing the alert tone "power on" and the LED blue light flash for 2 seconds, it means the bluetooth earphone is worked.

2. Long press the power button for about 5 seconds, hearing the alert tone "Power on" and "Pairing", it means it is in the pairing mode. Then turn on the Bluetooth function of the phone or other device, and connect the bluetooth signal named "Right ③", hearing the alert tone "Connected", it means it is paired successfully.

3. Long press the power button for about 3 seconds, hearing the alert tone "power off" and the LED red light flash for 2 seconds, it means the bluetooth earphone is turned off.

Controls

1. Call :

Short press : Answer/Hang up
Long press for 2 seconds : Reject a call

2. Music :

Short press : Play/Pause (Music player is working)

3. Long press for 3 seconds : Power on/off

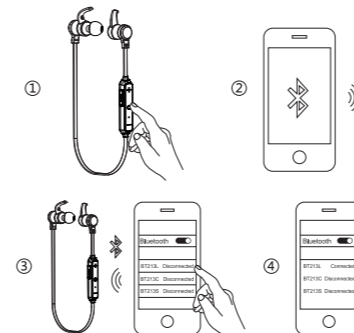


Click : Next song
Long press : VOL+

Click : Previous song
Long press : VOL-

Charging : LED red light is on
Full charging : LED red light is off

English/Chinese language switching : When it is in the pairing mode, double-click the power button, it can switch English/Chinese language.



Note: Take the name searched as the standard

NOTE:

This equipment has been tested and found to comply with the limits for a Class B digital device, pursuant to part 15 of the FCC Rules. These limits are designed to provide reasonable protection against harmful interference in a residential installation. This equipment generates uses and can radiate radio frequency energy and, if not installed and used in accordance with the instructions, may cause harmful interference to radio communications. However, there is no guarantee that interference will not occur in a particular installation. If this equipment does cause harmful interference to radio or television reception, which can be determined by turning the equipment off and on, the user is encouraged to try to correct the interference

by one or more of the following measures:

- Reorient or relocate the receiving antenna.
- Increase the separation between the equipment and receiver.
- Connect the equipment into an outlet on a circuit different from that to which the receiver is connected.
- Consult the dealer or an experienced radio/TV technician for help

Changes or modifications not expressly approved by the party responsible for compliance could void the user's authority to operate the equipment. This device complies with Part 15 of the FCC Rules. Operation is subject to the

following two conditions:

- (1) this device may not cause harmful interference, and
- (2) this device must accept any interference received, including interference that may cause undesired operation.