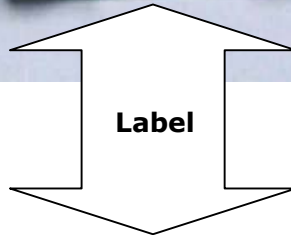
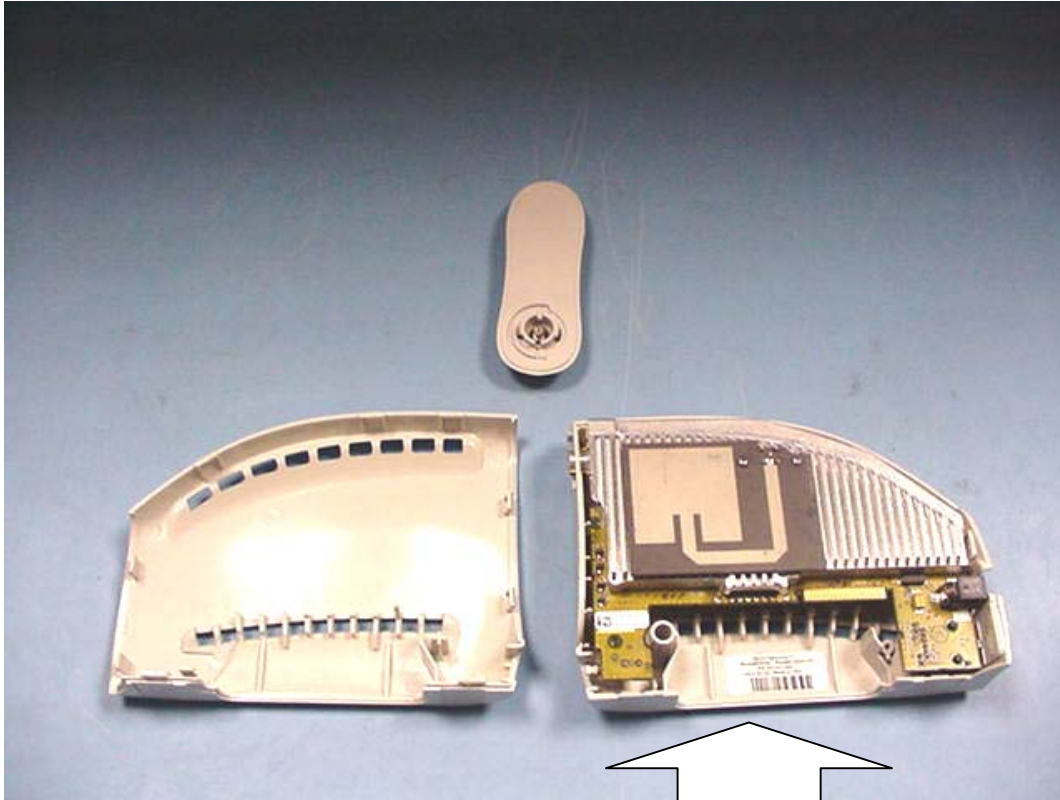



Label Information

FCC ID#: PL6-MMDS-CPE-R1



 **Navini**
NETWORKS™

Model # XXXXX	Part# XXX	S/N # XXXX
FCC ID # PL6-MMDS-CPE-R1		Input 5V, 3A
Made in XXX		

BAR CODE

LOCATION: Placed on the inside of the CPE on the right side of the plastic shell.

LABEL SIZE: The size will be 1.5" L x 0.625" W. The label will be white or silver with black text. The label will not be removable without leaving a residue. The label will be made of a plastic compound such that it will not tear.

MODEL NUMBER: 2600E, 2600U

PART NUMBER: Part number of the CPE (i.e. 92-000033-02)

S/N NUMBER: This is the serial number of the unit. The format of the serial number will be: MMY000000 where the M & Y are the month & year the product was manufactured. There will be a 6-digit number after the MMDD that will represent the serial number starting from 000001 to 999999. This 6-digit number will be reset to 000001 at the beginning of each month and will increase sequentially based upon the production of the CPE.

BAR CODE: Represent the bar code equivalent of the serial number

FCC ID #: PL6-MMDS-CPE-R1