

2.4 GHz
Ripwave™ LCD MODEM
External & Internal Photos
For FCC Certification

FCC ID #: PL6-2400-MDM08-R1



July 19, 2004

Permissions, Trademarks & Distribution

Copyright© March 2004, Navini Networks, Inc. All information contained herein and disclosed by this document is the proprietary property of Navini Networks, Inc. and all rights therein are expressly reserved. Acceptance of this material signifies agreement by the recipient that the information contained in this document is confidential and that it will be used solely for the purposes set forth herein. Acceptance of this material signifies agreement by the recipient that it will not be used, reproduced in whole or in part, disclosed, distributed, or conveyed to others in any manner or by any means – graphic, electronic, or mechanical, including photocopying, recording, taping, or information storage and retrieval systems – without the express written permission of Navini Networks, Inc.

Navini Networks, Internet at the Speed of Thought, zero-install, unwired by Navini, the Navini Networks logo, and Ripwave are trademarks of Navini Networks, Inc. Other product and company names mentioned herein may be trademarks and/or service marks of their respective owners.

Nothing herein constitutes any representation, warranty, assurance, or guaranty of any kind.

Because of continuing developments and improvements in design, manufacturing, and deployment, material in this document is subject to change without notification and does not represent any commitment or obligation on the part of Navini Networks, Inc.

Navini Networks, Inc. shall have no liability for any error or damages resulting from the use of this document. Any unauthorized usage is strictly prohibited without the express written permission of Navini Networks, Inc.



© 2004 Navini Networks, Inc. All rights reserved.

Navini Networks, Inc.
2240 Campbell Creek Blvd., Suite 110
Richardson, Texas 75082
USA

About This Document

Purpose

This document provides external and internal photos of the Navini Ripwave 2.4 GHz LCD modem. This document is a required by the USA FCC as part of the product certification process.

Revision History

| Date YYMMDD | Revision /Version | Authors | Comments |
|----------------|----------------------|--------------------------------|---------------|
| 040719 | 1.0.0 | Yasser Hannush 214.632.9277 | First Release |
| | | | |
| | | | |

Note: Key to document revision numbering: Doc. #: X.Y (e.g. 1.14)

X: Update of document with peer review and feedback.

Y: Minor updates and changes with no peer review.

Contacts

Contact Navini Networks during normal business hours: Monday - Friday 8:30 a.m.-5:30 p.m. USA Central Time (Coordinated Universal Time – 5 hours).

Corporate Headquarters:

Navini Networks, Inc.
2240 Campbell Creek Blvd., Suite 110
Richardson, Texas 75082
USA
972.852.4200
www.navini.com

Technical Support: USA: 866.RIP.WAVE
 Dallas: 972.852.4389
 Offshore 001.972.852.4389
 email: techsupport@navini.com

1. External Photos



Figure 1. External Front & Side view with LCD and Power switch showing



Figure 2. LEFT-External Front view with Upright Antenna folded down

Figure 3. RIGHT- External Back view with Data & Power ports showing

2. Internal Photos

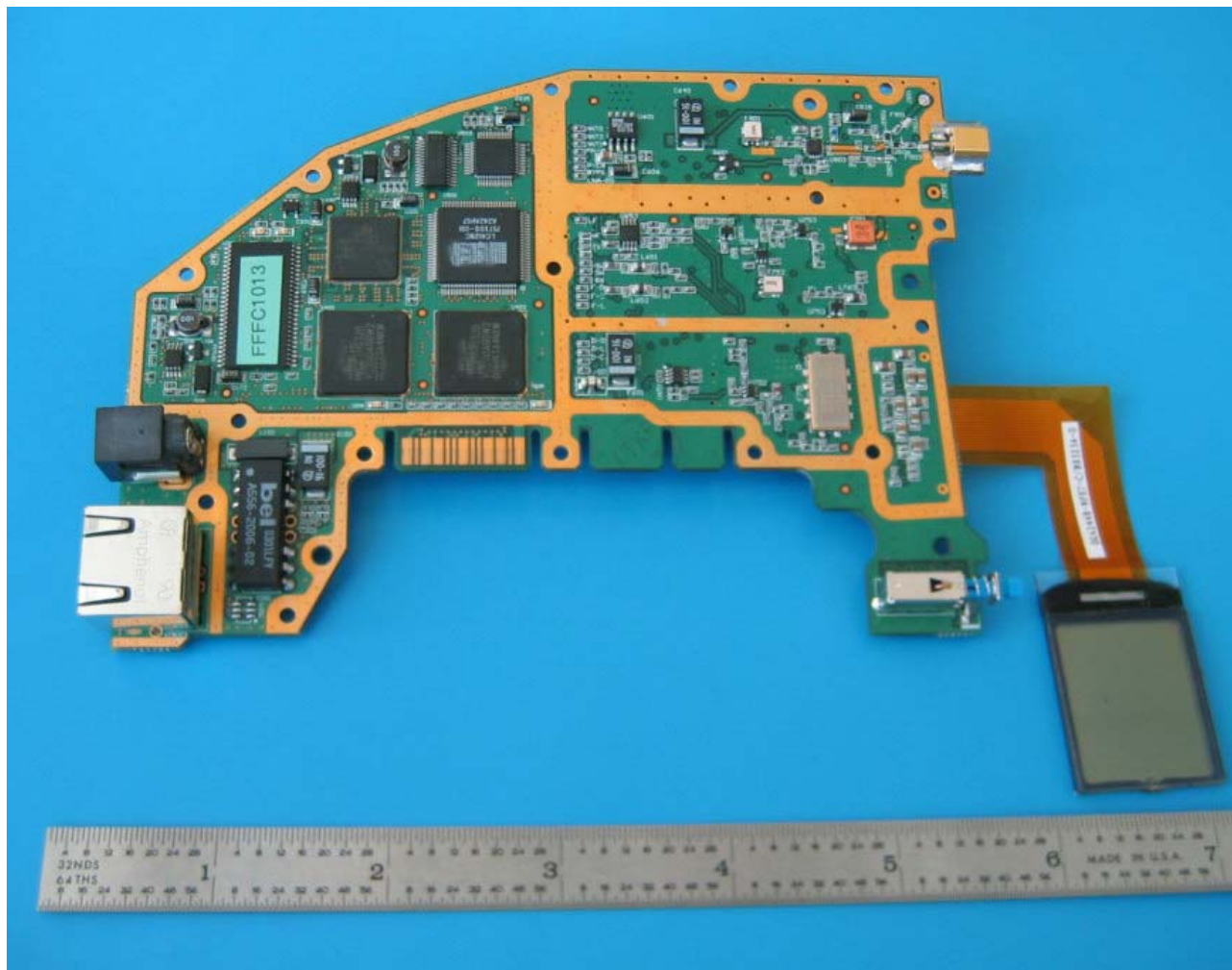


Figure 4. Internal board Front View

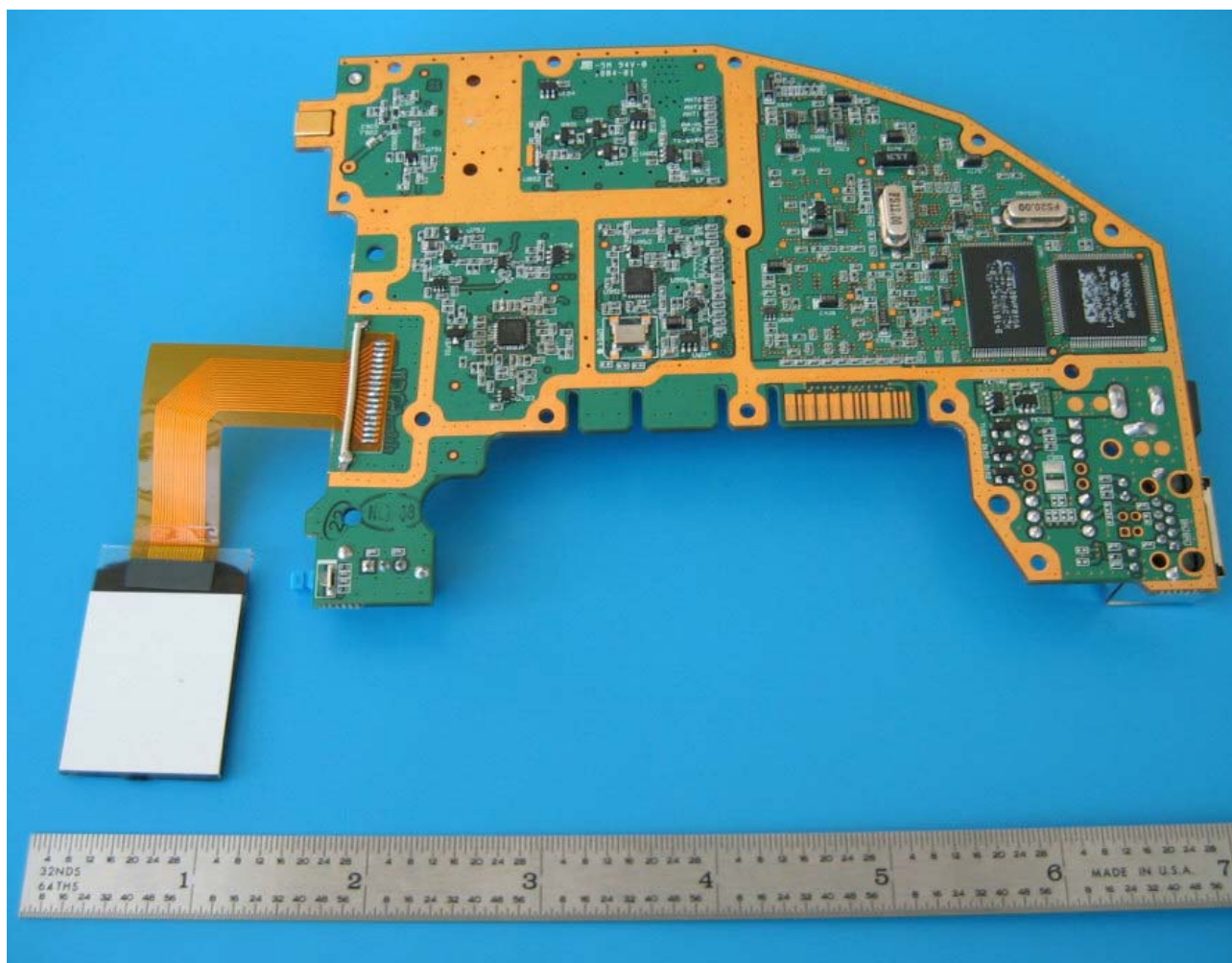


Figure 5. Internal board Back View

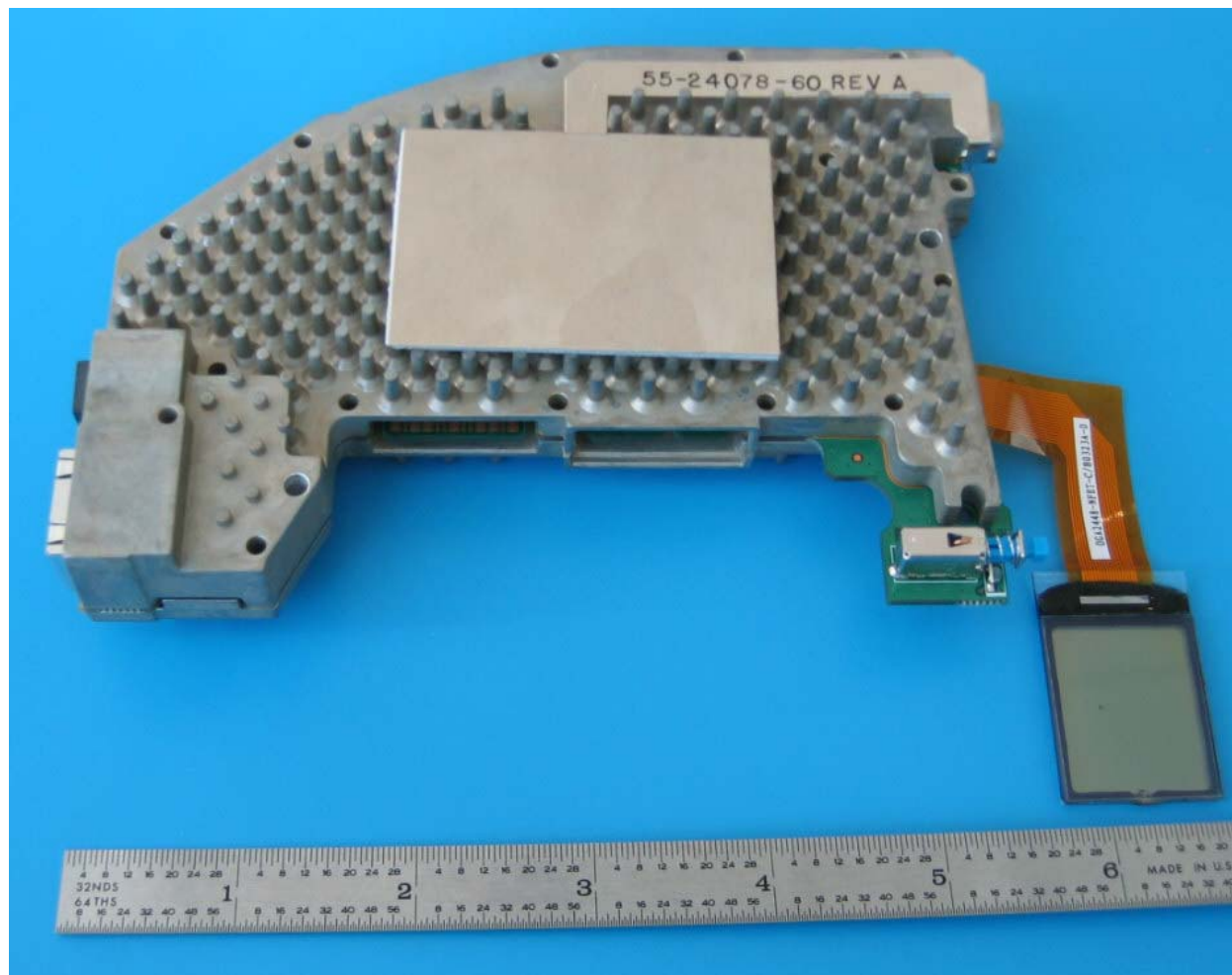


Figure 6. Internal board inside shield, Patch Antenna, Front View

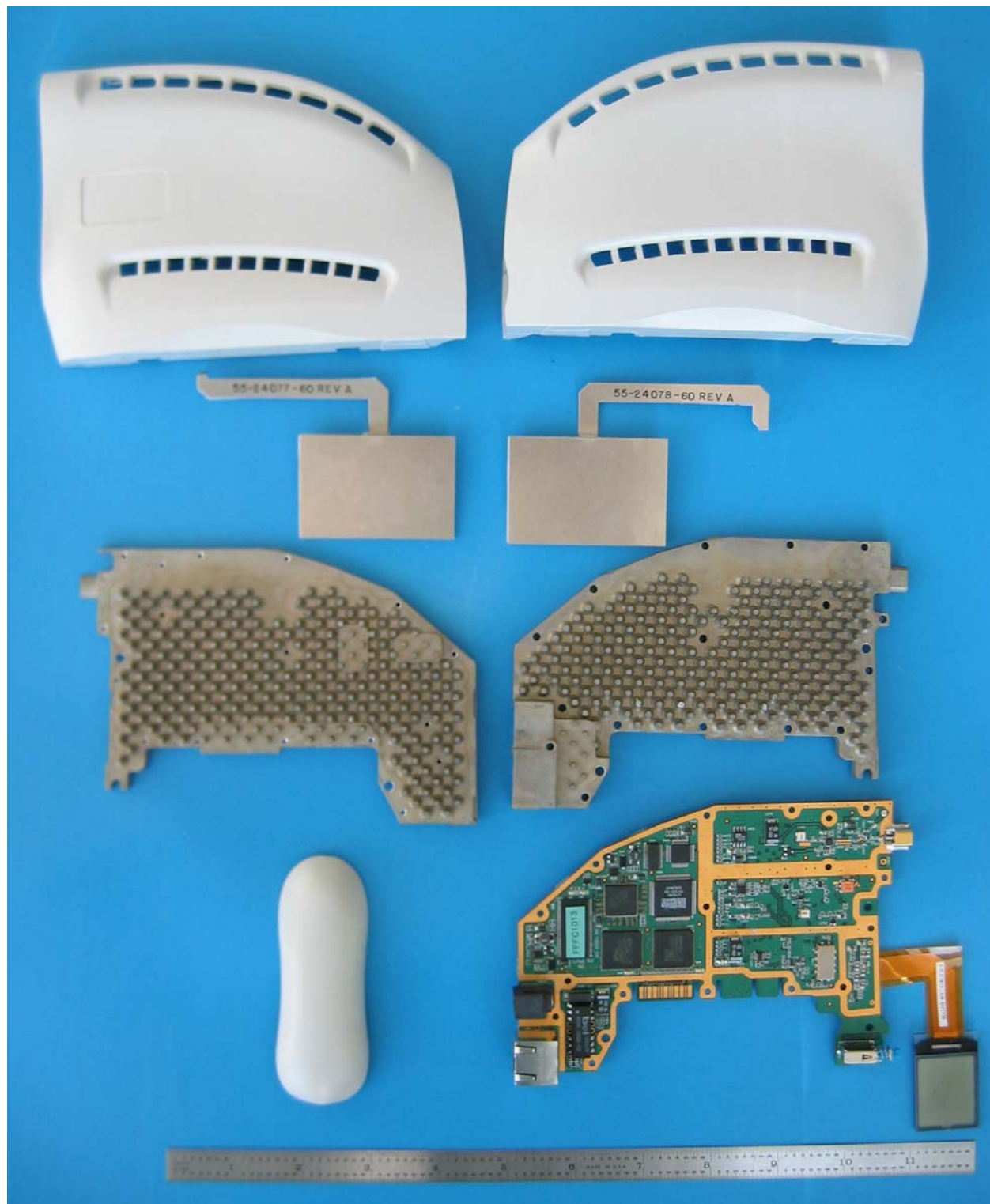


Figure 7. Internal board, Shield, Patch & Upright Antenna, & Casing Front View

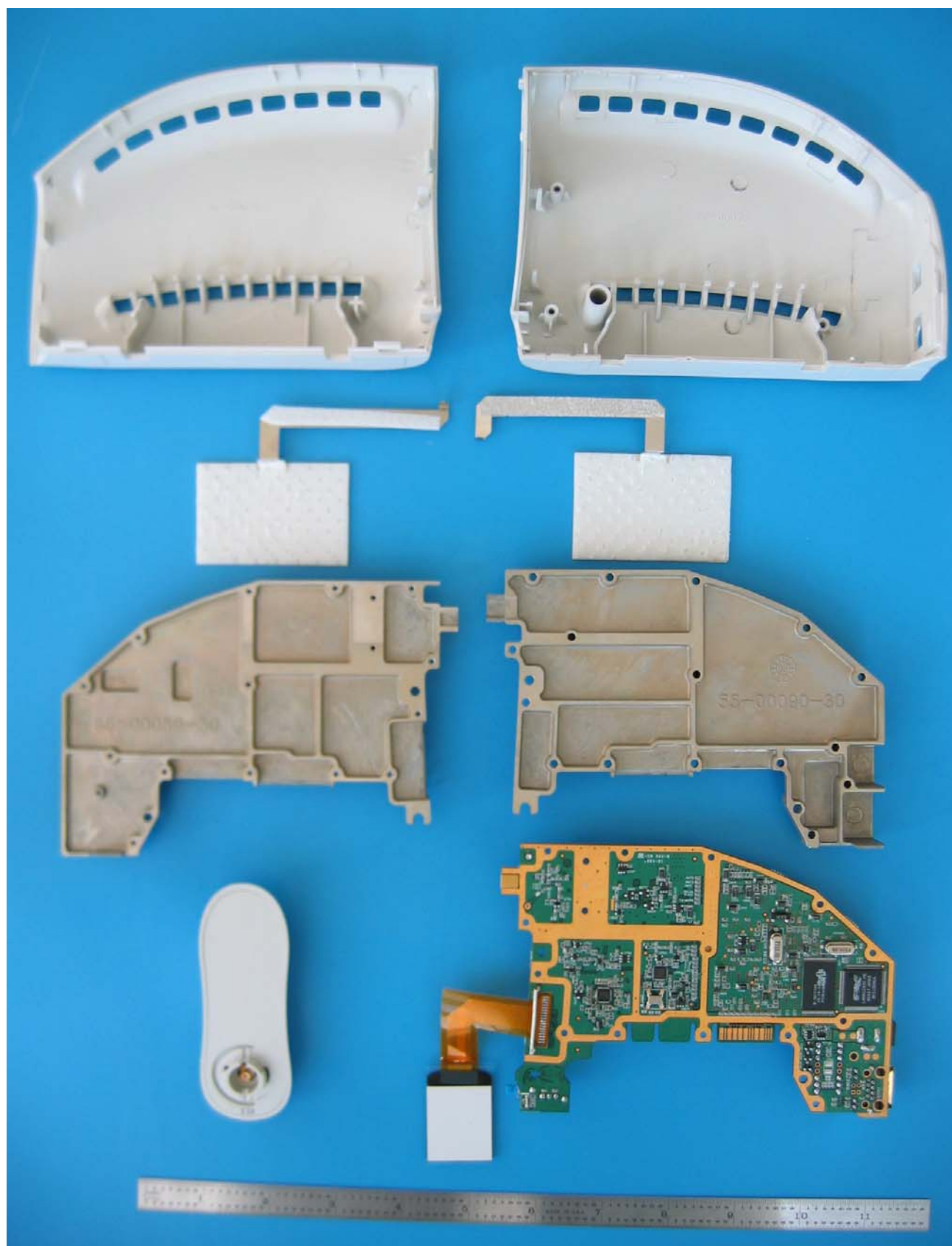


Figure 8. Internal board, Shield, Patch & Upright Antenna, & Casing Back View