

Configuring Windows 98 and Millennium PCs

1. Click the **Start** button. Select **Settings** and click the **Control Panel** icon. Double-click the **Network** icon.
2. On the Configuration tab, select the **TCP/IP** line for the applicable Ethernet adapter. Do not choose a TCP/IP entry whose name mentions DUN, PPPoE, VPN, or AOL. If the word **TCP/IP** appears by itself, select that line. Click the **Properties** button.

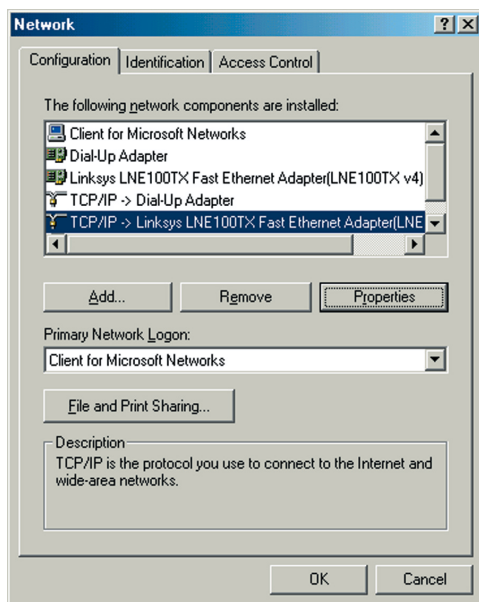


Figure 4-1

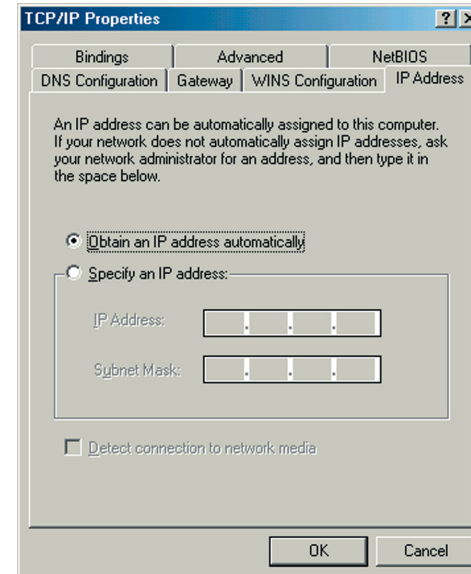


Figure 4-2

3. Click the **IP Address** tab. Select **Obtain an IP address automatically**.

4. Now click the **Gateway** tab, and verify that the *Installed Gateway* field is blank. Click the **OK** button.
5. Click the **OK** button again. Windows may ask you for the original Windows installation disk or additional files. Check for the files at c:\windows\options\cabs, or insert your Windows CD-ROM into your CD-ROM drive and check the correct file location, e.g., D:\win98, D:\win9x, etc. (if “D” is the letter of your CD-ROM drive).
6. Windows may ask you to restart your PC. Click the **Yes** button. If Windows does not ask you to restart, restart your computer anyway.

Go to “Chapter 5: Setting Up the Dual-Band Wireless A + G Broadband Router.”

Configuring Windows 2000 PCs

1. Click the **Start** button. Select **Settings** and click the **Control Panel** icon. Double-click the **Network and Dial-up Connections** icon.
2. Select the **Local Area Connection** icon for the applicable Ethernet adapter (usually it is the first Local Area Connection listed). Double-click the **Local Area Connection**. Click the **Properties** button.

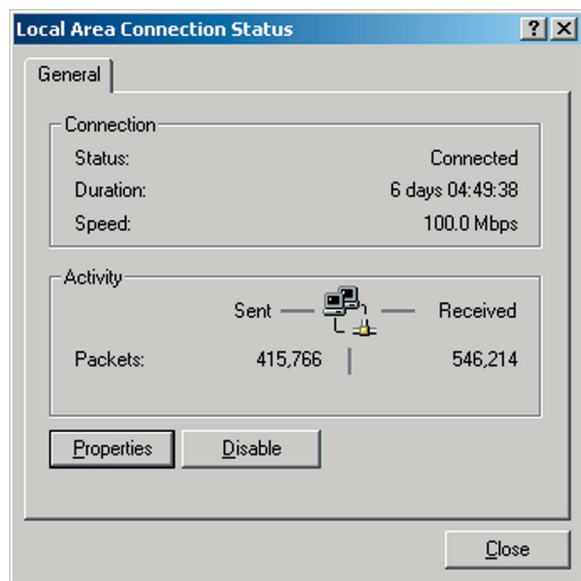


Figure 4-3

3. Make sure the box next to *Internet Protocol (TCP/IP)* is checked. Highlight **Internet Protocol (TCP/IP)**, and click the **Properties** button.

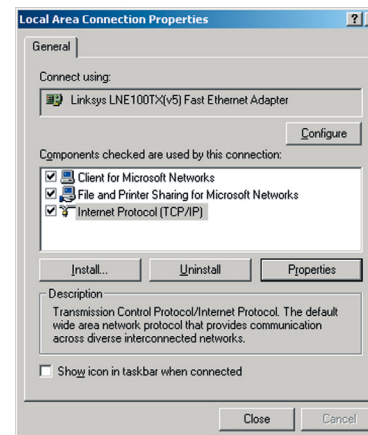


Figure 4-4

4. Select **Obtain an IP address automatically**. Once the new window appears, click the **OK** button. Click the **OK** button again to complete the PC configuration.

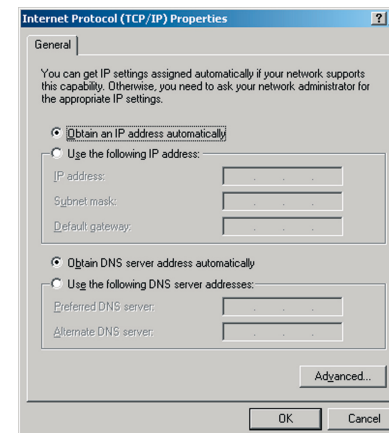


Figure 4-5

5. Restart your computer.

Go to “Chapter 5: Setting Up the Dual-Band Wireless A + G Broadband Router.”

Configuring Windows XP PCs

The following instructions assume you are running Windows XP with the default interface. If you are using the Classic interface (where the icons and menus look like previous Windows versions), please follow the instructions for Windows 2000.

1. Click the **Start** button and then the **Control Panel** icon. Click the **Network and Internet Connections** icon. Then click the **Network Connections** icon.
2. Select the **Local Area Connection** icon for the applicable Ethernet adapter (usually it is the first Local Area Connection listed). Double-click the **Local Area Connection**. Click the **Properties** button.

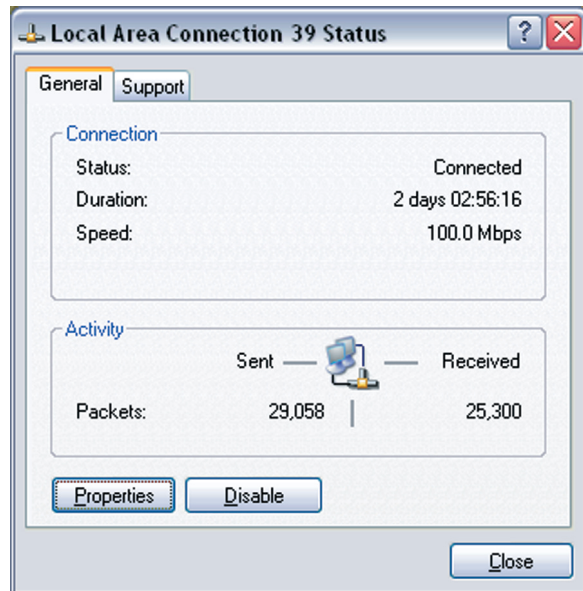


Figure 4-6

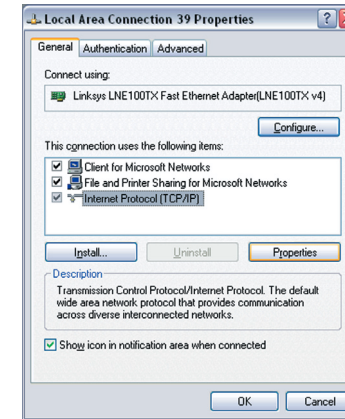


Figure 4-7

3. Make sure the box next to *Internet Protocol (TCP/IP)* is checked. Highlight **Internet Protocol (TCP/IP)**, and click the **Properties** button.

4. Select **Obtain an IP address automatically**. Once the new window appears, click the **OK** button. Click the **OK** button again to complete the PC configuration.

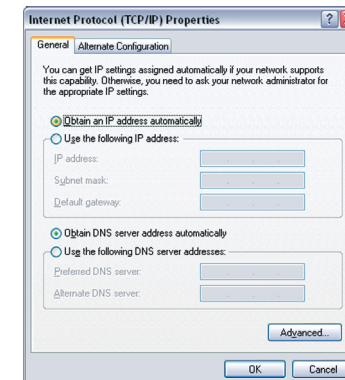


Figure 4-8

5. Restart your computer.

Go to “Chapter 5: Setting Up the Dual-Band Wireless A + G Broadband Router.”

Chapter 5: Setting Up the Dual-Band Wireless A + G Broadband Router

When you are ready to connect the Router to your network, the Router's Setup Wizard will take you through all the steps necessary for configuration.



Note: While the Router has been designed to work correctly right out of the box, setting it up on a wireless computer will require you to use the Linksys default settings. These settings can then be changed with the Setup Wizard or Web-based Browser Utility.

1. Insert the Setup Wizard CD into your PC's CD-ROM drive. Your PC must have an active Internet connection.
2. The screen in Figure 5-1 should appear on your monitor. If it does not, this means the autorun is not functioning. Start the Setup Wizard manually by clicking the **Start** button, selecting **Run**, and typing **d:\setup.exe** (where "D" is your PC's CD-ROM drive). To set up the first computer connected to the Router, click the **Set Up First Computer** button. When you are ready to set up additional PCs, click the **Set Up Additional Computer(s)** button. Clicking the **User Guide** button opened this User Guide. To exit this Setup Wizard, click the **Exit** button.



Figure 5-1

Dual-Band Wireless A+G Broadband Router

3. As shown in Figure 5-2, you will need to have your PC connected to an active Internet connection. The Setup Wizard will use this connection to detect what type of Internet access you have. Verify that you are set up correctly to your Internet connection and click the **Next** button to continue.

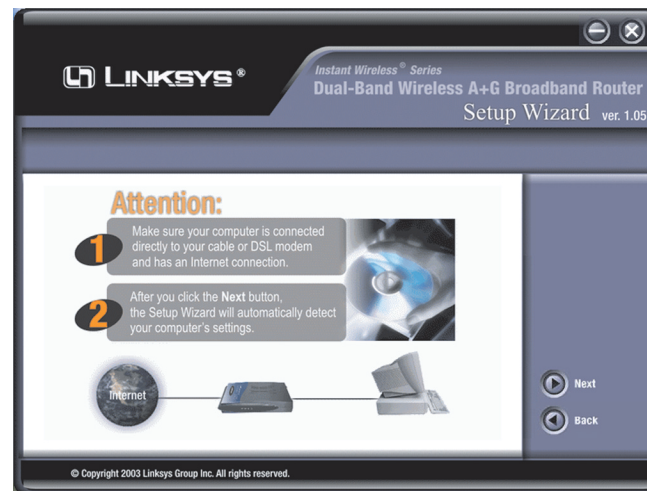


Figure 5-2

4. Next, you will be asked what type of Internet connection you are using, as shown in Figure 5-3. Click the **DSL** or **Cable** button, whichever is appropriate for your type of connection.

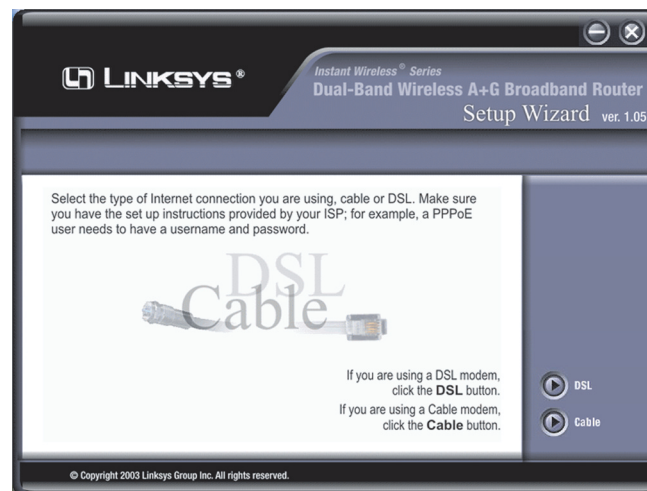


Figure 5-3

5. Now, power off your modem and disconnect your Internet connection. Then, connect the Router as shown on the screen displayed. If you have a cable connection, you will see a screen similar to that shown in Figure 5-4. If you have a DSL connection, you will see a screen similar to that shown in Figure 5-5. When the connections are made, click the **Next** button to continue.



Figure 5-4

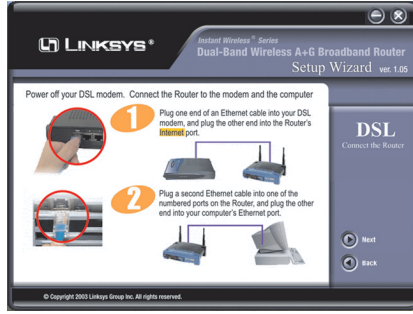


Figure 5-5



Note: After the Router is connected, your PC may try to connect directly to the Internet. Since the connection will now be made through the Router, you can disregard (click **Cancel**) any attempt your PC makes to connect.

6. Power on your modem and connect the power to the modem and the Router. As shown on the following screen, verify that the Router's LEDs are correctly lit. If you have a cable connection, you will see a screen similar to that shown in Figure 5-6. If you have a DSL connection, you will see a screen similar to that shown in Figure 5-7. When the LEDs are lit appropriately, click the **Next** button to continue.

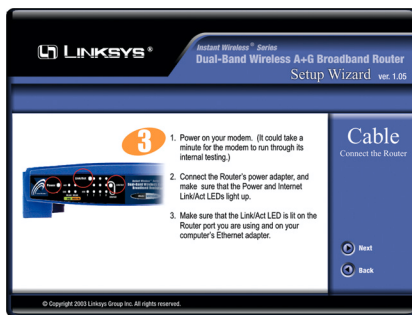


Figure 5-6



Figure 5-7

If you are using a Static IP Address to connect to the Internet, proceed to step 7a. If you are using a DHCP connection, proceed to step 7b. If you are using a PPPoE connection, proceed to step 7c.

- 6a. While making your Internet connection, the Router will require you to Log in, as shown in Figure 5-8. Enter the default password: **admin**. Then, click the **OK** button. (This password should be changed from the Web-based Utility's *Password* tab for greater security.)



Figure 5-8

- 7a. When connecting to the Internet through a Static IP Address:

The Setup Wizard will now ask you to make changes to your PC's TCP/IP settings. Follow the instructions shown, clicking the **Next** button to continue.

If you are using Windows 98 or Me, the instructions will start as shown in Figure 5-9.

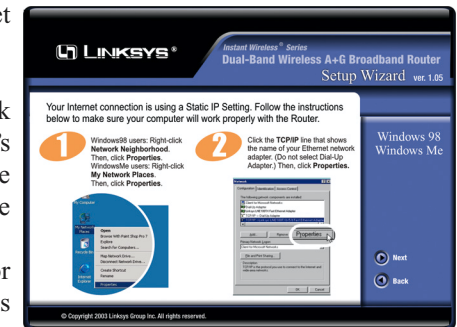


Figure 5-9