

Instant Wireless™ Series

# Network PC Card



Use this Guide to install:

WPC11 ver. 3.0

User Guide

 **LINKSYS®**

#### COPYRIGHT & TRADEMARKS

Copyright © 2002 Linksys, All Rights Reserved. Instant Wireless™ is a registered trademark of Linksys. Microsoft, Windows, and the Windows logo are registered trademarks of Microsoft Corporation. All other trademarks and brand names are the property of their respective proprietors.

#### LIMITED WARRANTY

Linksys guarantees that every Instant Wireless™ Network PC Card ver. 3.0 is free from physical defects in material and workmanship for one year from the date of purchase, when used within the limits set forth in the Specifications chapter of this User Guide. If these products prove defective during this warranty period, call Linksys Technical Support in order to obtain a Return Authorization Number. BE SURE TO HAVE YOUR PROOF OF PURCHASE AND A BARCODE FROM THE PRODUCT'S PACKAGING ON HAND WHEN CALLING. RETURN REQUESTS CANNOT BE PROCESSED WITHOUT PROOF OF PURCHASE. When returning a product, mark the Return Authorization Number clearly on the outside of the package and include your original proof of purchase. All customers located outside of the United States of America and Canada shall be held responsible for shipping and handling charges.

IN NO EVENT SHALL LINKSYS' LIABILITY EXCEED THE PRICE PAID FOR THE PRODUCT FROM DIRECT, INDIRECT, SPECIAL, INCIDENTAL, OR CONSEQUENTIAL DAMAGES RESULTING FROM THE USE OF THE PRODUCT, ITS ACCOMPANYING SOFTWARE, OR ITS DOCUMENTATION. LINKSYS DOES NOT OFFER REFUNDING FOR ANY PRODUCT. Linksys makes no warranty or representation, expressed, implied, or statutory, with respect to its products or the contents or use of this documentation and all accompanying software, and specifically disclaims its quality, performance, merchantability, or fitness for any particular purpose. Linksys reserves the right to revise or update its products, software, or documentation without obligation to notify any individual or entity. Please direct all inquiries to:

Linksys P.O. Box 18558, Irvine, CA 92623.

#### FCC STATEMENT

This product has been tested and complies with the specifications for a Class B digital device, pursuant to Part 15 of the FCC Rules. These limits are designed to provide reasonable protection against harmful interference in a residential installation. This equipment generates, uses, and can radiate radio frequency energy and, if not installed and used according to the instructions, may cause harmful interference to radio communications. However, there is no guarantee that interference will not occur in a particular installation. If this equipment does cause harmful interference to radio or television reception, which is found by turning the equipment off and on, the user is encouraged to try to correct the interference by one or more of the following measures:

- Reorient or relocate the receiving antenna
- Increase the separation between the equipment or devices
- Connect the equipment to an outlet other than the receiver's
- Consult a dealer or an experienced radio/TV technician for assistance

FCC Caution: To assure continued compliance, (example - use only shielded interface cables when connecting to computer or peripheral devices). Any changes or modifications not expressly approved by the party responsible for compliance could void the user's authority to operate this equipment.

#### IMPORTANT NOTE: FCC Radiation Exposure Statement:

This equipment complies with FCC radiation exposure limits set forth for an uncontrolled environment. This equipment should be installed and operated with minimum distance 2.5cm between the radiator & your body.

This transmitter must not be co-located or operating in conjunction with any other antenna or transmitter.

UG-WPC11 ver.3.0-011702B KL

# Table of Contents

<b>Chapter 1: Introduction</b>	<b>1</b>	<b>Chapter 9: Advanced Properties</b>	<b>41</b>
The Instant Wireless™ Network PC Card ver. 3.0	1	Advanced Properties for Windows 95, 98, ME, and 2000	41
Features	1	Advanced Properties for Windows NT	49
Package Contents	2	<b>Chapter 10: Troubleshooting</b>	<b>56</b>
System Requirements	2	Common Problems and Solutions	56
<b>Chapter 2: Planning Your Wireless Network</b>	<b>3</b>	Frequently Asked Questions	57
Network Topology	3	<b>Chapter 11: Glossary</b>	<b>61</b>
Roaming	3	<b>Chapter 12: Specifications</b>	<b>68</b>
<b>Chapter 3: Installing the Drivers and Configuration Utility for Windows 95, 98, ME and 2000</b>	<b>4</b>	Environmental	68
Before You Start	4	<b>Chapter 13: Warranty Information</b>	<b>69</b>
Running the Auto Driver Installation	4	<b>Chapter 14: Contact Information</b>	<b>70</b>
Ad-Hoc Versus Infrastructure Mode	8		
Infrastructure Mode	9		
Ad-Hoc Mode	11		
<b>Chapter 4: Installing the Drivers and Configuration Utility for Windows XP</b>	<b>14</b>		
<b>Chapter 5: Installing the Network PC Card</b>	<b>16</b>		
<b>Chapter 6: Installing the Drivers and Configuration Utility for Windows NT</b>	<b>17</b>		
Overview	17		
Installing the Network PC Card in Your Notebook PC	17		
Installing the Drivers for Windows NT	18		
Installing the Configuration Utility for Windows NT	30		
<b>Chapter 7: Configuration Utility</b>	<b>30</b>		
Using the Configuration Utility	30		
<b>Chapter 8: Installing Network Protocols</b>	<b>39</b>		

# Chapter 1: Introduction

## The Instant Wireless™ Network PC Card ver. 3.0

Put the “mobile” back into mobile computing! Whether you’re at your desk or in the boardroom, the Instant Wireless™ Network PC Card allows you to share printers, files, and other resources anywhere within your LAN infrastructure, increasing your productivity and keeping you “in touch.”

The Instant Wireless™ Network PC Card now has a new, higher-powered antenna that provides a greater range than ever. The increased sensitivity helps filter out interference and “noise” to keep your signal clear. Improved error correction in the chipset keeps you operating at higher transmission rates for longer distances. And, since you only need one Type II or III PCMCIA slot, you’re free to use your other slots for additional accessories.

Ready to run in Type II or III PCMCIA-equipped notebook PCs running Windows 95, 98, Millennium, NT, 2000, and XP, the Instant Wireless™ Network PC Card ver. 3.0 is truly a “must-have” for all notebook PC users.

### Features

- 11 Mbps High-Speed Data Transfer Rate
- Compatible with Virtually All Major Network Operating Systems
- Plug-and-Play Operation Provides Easy Setup
- Integrated Equalizer Recovers Weak Signals and Enhances Sensitivity
- Sturdy Metal Design with Integrated Antenna
- Works with All Standard Internet Applications
- Interoperable with IEEE 802.11b (DSSS) 2.4GHz-Compliant Equipment
- Clear Channel Assessment Increases Network Throughput
- Hardware Buffer Chaining Provides High Performance While Reading and Writing Buffers
- Capable of up to 128-Bit WEP
- Free Technical Support—24 Hours a Day, 7 Days a Week for North America Only
- 1-Year Limited Warranty

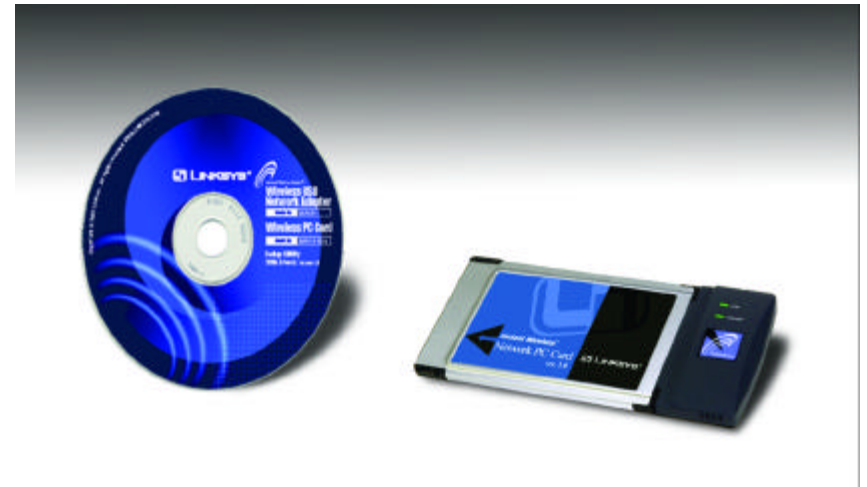


Figure 1-1

### Package Contents

- One Instant Wireless™ Network PC Card ver. 3.0
- One Setup Utility CD-ROM (User Guide on CD)
- Quick Installation insert and Registration Card (not shown)

### System Requirements

- A 16-bit PCMCIA Type II or Type III slot
- PCMCIA revisions 2.10 compliant card and socket services
- Windows 95, 98, Millennium, NT, 2000, or XP
- 600 Kbytes of free disk space for utility and driver installation

## Chapter 2: Planning Your Wireless Network

### Network Topology

A wireless LAN is exactly like a regular LAN, except that each computer in the LAN uses an Instant Wireless™ Network PC Card ver. 3.0 to connect to the network through a wireless connection. Computers in a wireless LAN must be configured to share the same radio channel.

The Instant Wireless™ Network PC Card ver. 3.0 provides LAN access for wireless workstations. An integrated wireless and wired LAN is called an Infrastructure configuration. A group of Instant Wireless™ Network PC Card ver. 3.0 users and an Access Point compose a Basic Service Set (BSS). Each PC equipped with an Instant Wireless™ Network PC Card ver. 3.0 in a BSS can talk to any computer in a wired LAN infrastructure via the Access Point.

An infrastructure configuration extends the accessibility of an Instant Wireless™ Network PC Card ver. 3.0 PC to a wired LAN, and doubles the effective wireless transmission range for two PCs equipped with an Instant Wireless™ Network PC Card ver. 3.0. Since the Access Point is able to forward data within its BSS, the effective transmission range in an infrastructure LAN is doubled.

### Roaming

Infrastructure mode also supports roaming capabilities for mobile users. More than one BSS can be configured as an Extended Service Set (ESS). This continuous network allows users to roam freely within an ESS. All PCs, equipped with an Instant Wireless™ Network PC Card ver. 3.0, within one ESS must be configured with the same ESS ID.

Before enabling an ESS with roaming capability, selecting a feasible radio channel and optimum Access Point position is recommended. Proper Access Point positioning combined with a clear radio signal will greatly enhance performance.

## Chapter 3: Installing the Drivers and Configuration Utility for Windows 95, 98, ME, and 2000

### Before You Start

Your new Linksys Instant Wireless™ Network PC Card ver. 3.0 comes with an automated software installation procedure for Windows 95, 98, Millennium, and 2000. **Windows NT or XP users should refer to the next section.** This new procedure automatically installs the drivers and Configuration Utility **before** you insert the Card into your PC, so there's no searching for the location of drivers. *Again, this step is taken before inserting the Card into your PC.*

### Running the Auto Driver Installation

1. Before installing your card, insert the Setup Utility CD into your CD-ROM drive. Unless you have deactivated the auto-run feature of Windows, the screen shown in Figure 2-1 should appear automatically.



Figure 2-1

If this screen does not appear automatically, you can access the installation by clicking the **Start** button and choosing **Run**. In the drop-down box provided, type **D:\setup.exe** (where D: is the letter of your CD-ROM drive). Alternately, double-click **My Computer** and double-click the CD-ROM drive where the Setup Utility CD is located. Double-click the **Setup.exe** icon in the folder that appears.

- The first tab across the top of the screen, labeled **Install**, should now be highlighted. Click the **Install** button. A screen similar to that shown in Figure 2-2 should appear, indicating that Windows is preparing the installation.

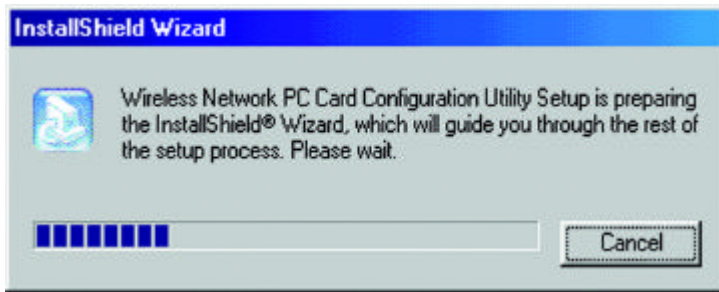



Figure 2-2

If, for whatever reason, you need to abort or terminate the installation, press the **Cancel** button at any time during the installation. Otherwise the installation will continue automatically.

 **Note:** If you stop the installation before it has finished, you will have to run the installation completely again before installing your hardware.

- The screen in Figure 2-3 will appear next, indicating that Windows is ready to continue the installation. Click the **Next** button.

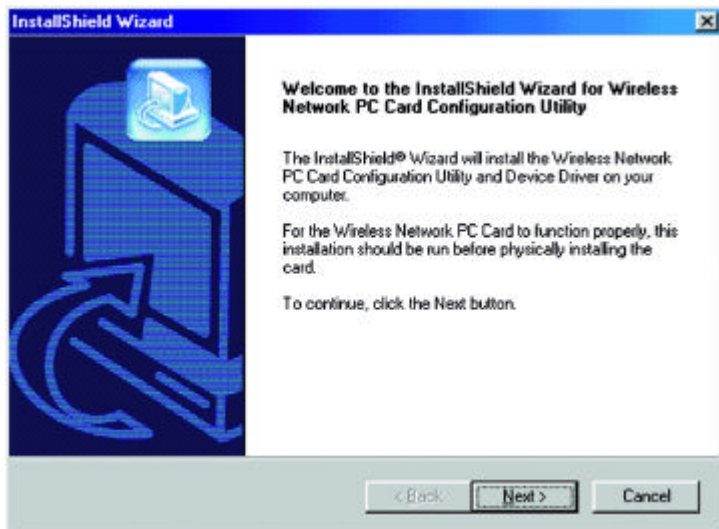


Figure 2-3

- Figure 2-4 shows the **Warranty Policy** screen. Read the entire policy by pressing the **Page Down** button on your keyboard or by using the on-screen scroll bar. Click on the **Yes** button if you agree, or **No** if you disagree. Clicking **No** will terminate the installation. If you click **Yes**, the installation will continue.

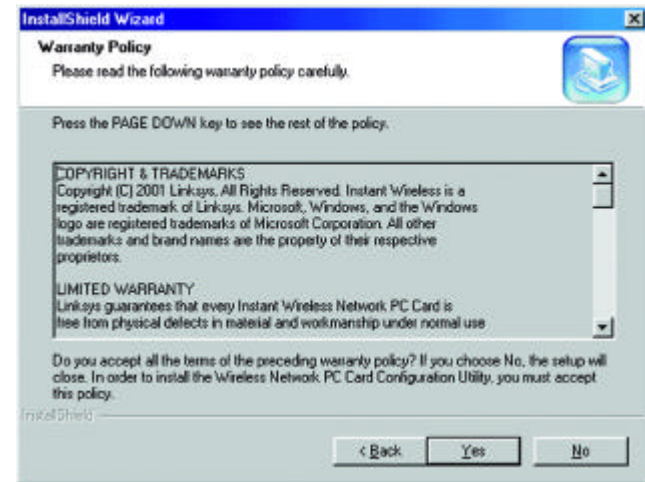


Figure 2-4

- The screen in Figure 2-5 will appear next, requesting the folder into which the Configuration Utility will be installed. To install the Configuration Utility in the default directory (recommended), click the **Next** button. If you prefer to install the Utility in another directory, click the **Browse** button, and locate the preferred directory. Then, click the **Next** button.

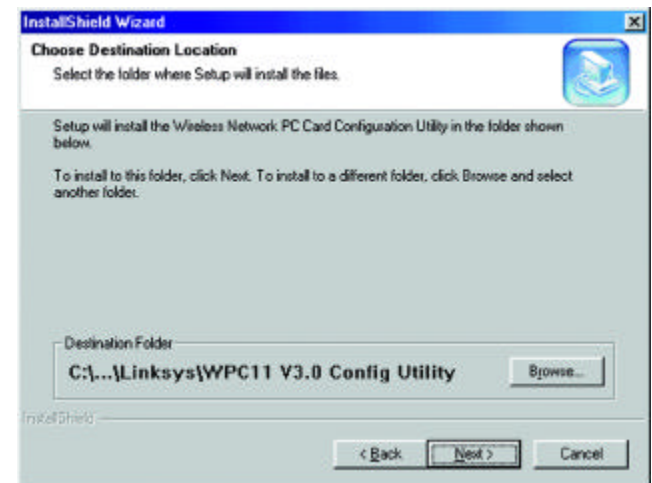


Figure 2-5

6. When the screen shown in Figure 2-6 appears, choose either **Infrastructure** mode or **Ad-Hoc** mode. If you are unsure whether to choose Infrastructure or Ad-Hoc, refer to the next section for more information. Once you have made your choice, click the **Next** button.

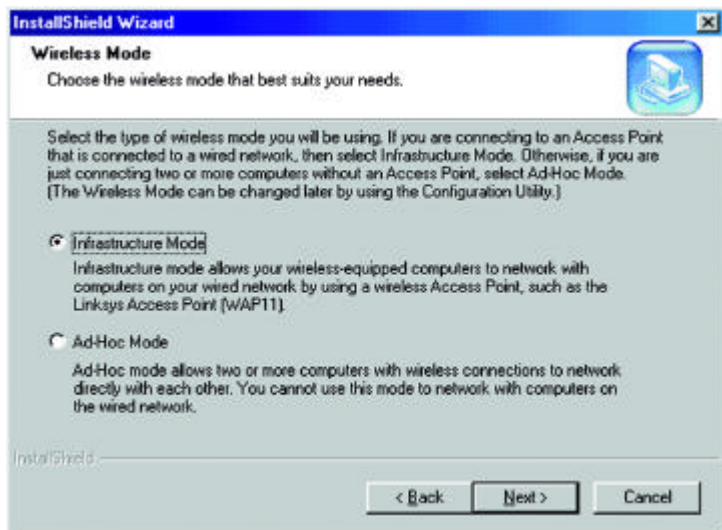


Figure 2-6

## Ad-Hoc versus Infrastructure Mode

Unlike wired networks, wireless networks have two different modes in which they may be set up: **Infrastructure** and **Ad-Hoc**. Choosing between these two modes depends on whether or not the wireless network needs to share data or peripherals with a wired network or not.

If the computers on the wireless network need to be accessible by a wired network or need to share a peripheral, such as a printer, with the wired network computers, the wireless network should be set up in the **Infrastructure** mode. The basis of Infrastructure mode centers around an **access point**, which serves as the main point of communications in a wireless network (see Figure 2-7). Access points transmit data to PCs equipped with wireless network cards, which can **roam** within a certain radial range of the access point. Multiple access points can be arranged to work in succession to extend the roaming range, and can be set up to communicate with your Ethernet hardware as well.



Figure 2-7

If the wireless network is relatively small and needs to share resources only with the other computers on the wireless network, then the **Ad-Hoc** mode can be used (shown in Figure 2-8). Ad-Hoc mode allows computers equipped with wireless Network PC Cards to communicate directly with each other, eliminating the need for an access point. The drawback of this mode is in the fact that, in Ad-Hoc mode, wireless-equipped computers are not able to communicate



Figure 2-8

with computers on a wired network. And, of course, communication between the wireless-equipped computers is limited by the distance and interference directly between them.

## Infrastructure Mode

1. If you have chosen **Infrastructure** mode, the following screen (Figure 2-9) will appear. If you have chosen **Ad-Hoc** mode, skip to the next section, titled “Ad-Hoc Mode”.

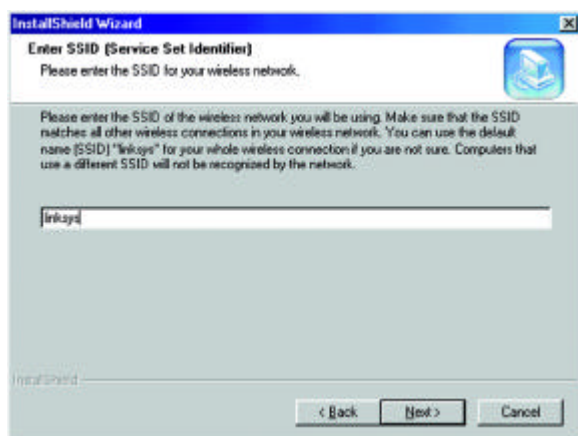


Figure 2-9

You will be prompted to enter an **SSID** value in the box provided. The SSID may be up to 32 characters in length. This may include any character on the keyboard, keeping in mind that the SSID is case sensitive. All SSID values on your wireless network must match. If you are unsure, use the default value of “linksys.” Then, click the **Next** button.

2. The **Review Settings** screen (Figure 2-10) will appear next. Verify that all the settings are correct and click the **Next** button to continue.

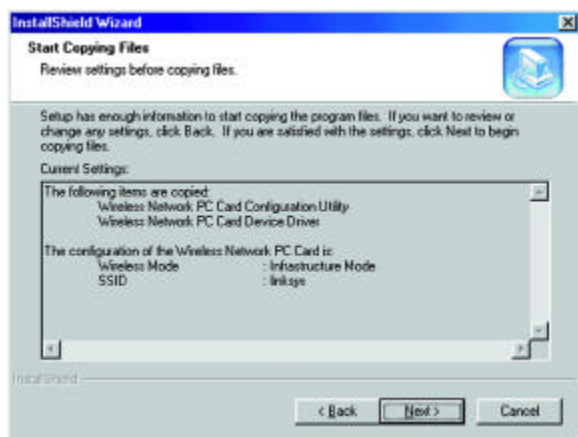


Figure 2-10

3. The screen shown in Figure 2-11 will appear, indicating that all of the appropriate files are being copied onto your drive. Click the **Cancel** button if you need to stop the installation for any reason.

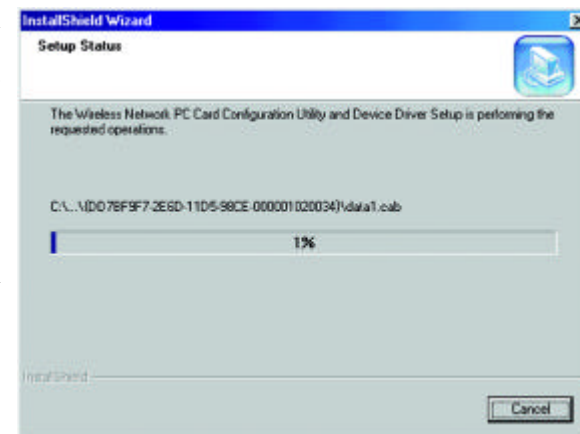


Figure 2-11

4. Once Windows has finished copying the necessary files, the screen shown in Figure 2-12 will appear. In order for the drivers to be installed properly, you must restart your computer. If you choose to do it now, select **Yes, I want to restart my computer now**. If you do not want to do it now, choose **No, I will restart my computer later**. Once you have made your choice, click the **Finish** button to continue.

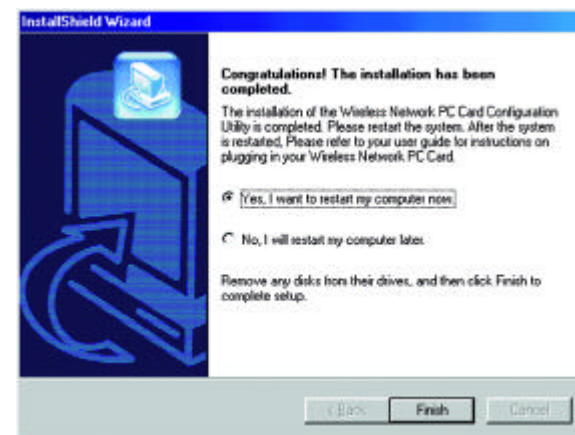


Figure 2-12



**Note:** Restart the computer and go to **Chapter 3: Installing the Network PC Card** for further instructions.



## Ad-Hoc Mode

1. If you have chosen **Ad-Hoc** mode, the following screen will appear. (See Figure 2-13.) If you have chosen **Infrastructure** mode, refer to the previous section, titled “Infrastructure Mode”.

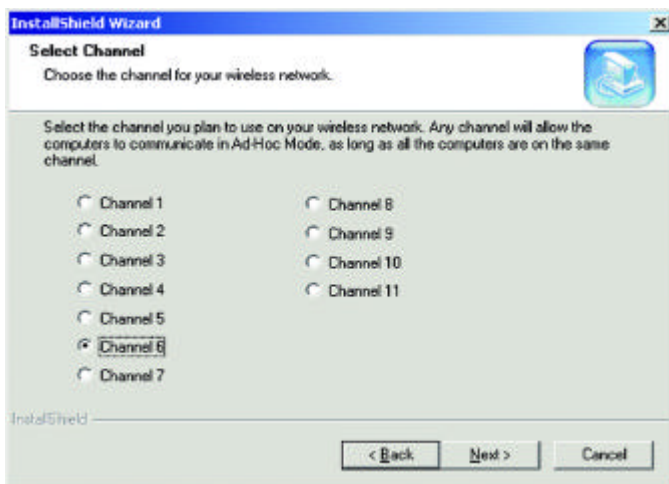


Figure 2-13

You will be prompted to choose a **Channel** from the list provided. All computers on your wireless network must be using the same channel in order to communicate with each other. If you are unsure about which channel to use, select the default channel (Channel 6). Once you have chosen your channel, click the **Next** button.

2. The screen shown in Figure 2-14 should appear. You will be prompted to enter an **SSID** value in the field provided. All SSID values on your wireless network must match. If you are unsure, use the default value of “linksys.” Then, click the **Next** button.

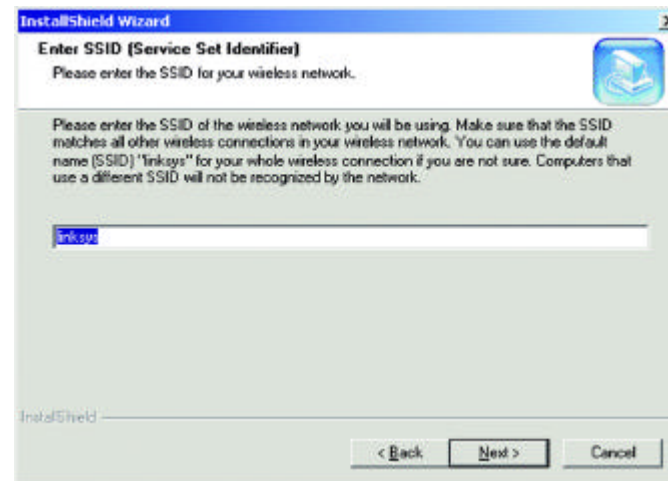


Figure 2-14

3. The next screen to appear (Figure 2-15) will be the Review Settings screen. Verify that all the settings are correct and click the **Next** button to continue.

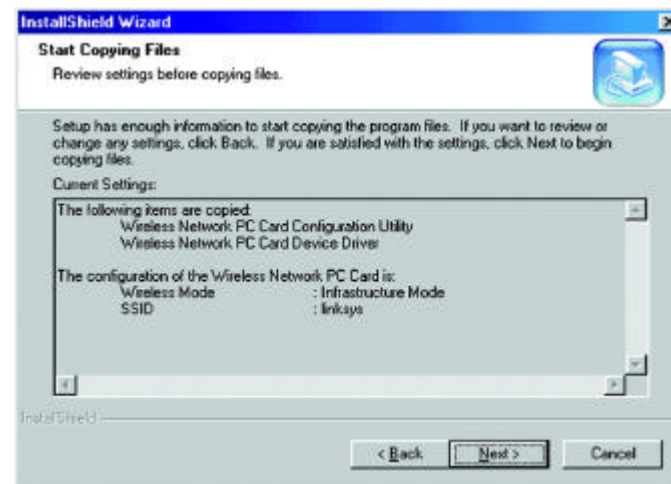


Figure 2-15

4. The next screen will indicate that all of the appropriate files are being copied onto your drive. (See Figure 2-16.) Click the **Cancel** button if you need to stop the installation for any reason.

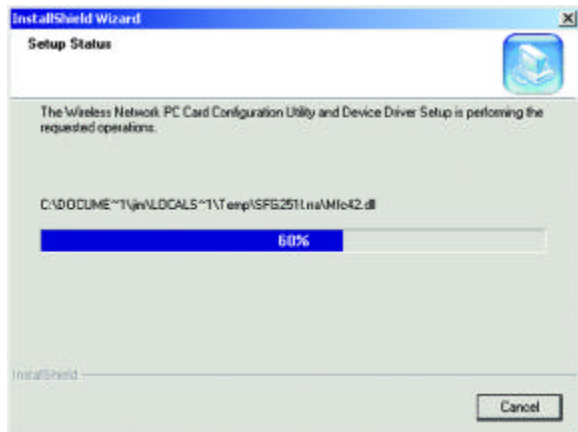


Figure 2-16

5. Once Windows has finished copying the necessary files, a screen similar to that shown in Figure 2-17 will appear. In order for the drivers to be installed properly, you must restart your computer. If you choose to do it now, select **Yes, I want to restart my computer now**. If you do not want to do it now, choose **No, I will restart my computer later**. Once you have made your choice, click the **Finish** button to continue.

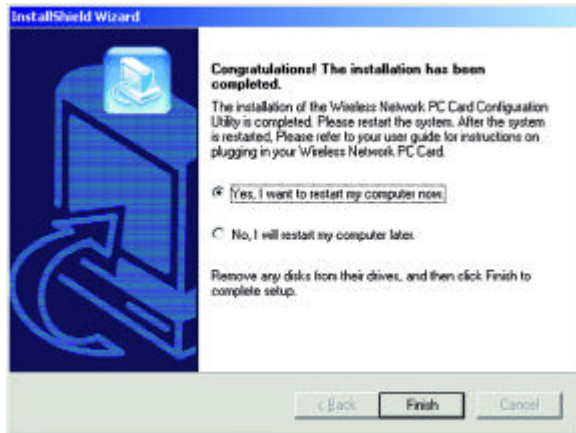


Figure 2-17



**Note:** Restart the computer and go to **Chapter 5: Installing the Network PC Card** for further instructions.

## Chapter 4: Installing the Drivers and Configuration Utility for Windows XP

Windows XP will automatically walk you through the driver installation process as well as automatically configure the Network PC Card for your wireless network. If you have any questions regarding wireless networking on your Windows XP PC, please refer to your Windows XP documentation.

To install the Network PC Card's drivers, insert the Setup Utility CD-ROM into your CD-Rom drive and then insert the card into your PC's PCMCIA slot. Windows XP will automatically detect the card and search for the appropriate drivers. The screen in Figure 4-1 will then appear.

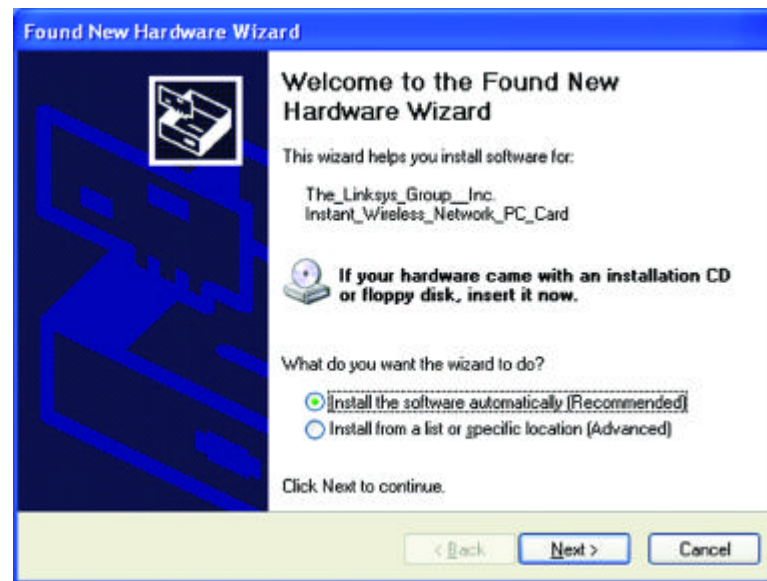


Figure 4-1

Verify that the radio button beside **Install the software automatically (Recommended)** is highlighted. If not, click it. Then, click the **Next** button to continue.

The Windows XP compatibility screen will appear, as shown in Figure 4-2. As this card has been tested to work with Windows XP, click the **Continue Anyway** button to continue.



Figure 4-2

On the final installation screen, click the Finish button to complete installation.

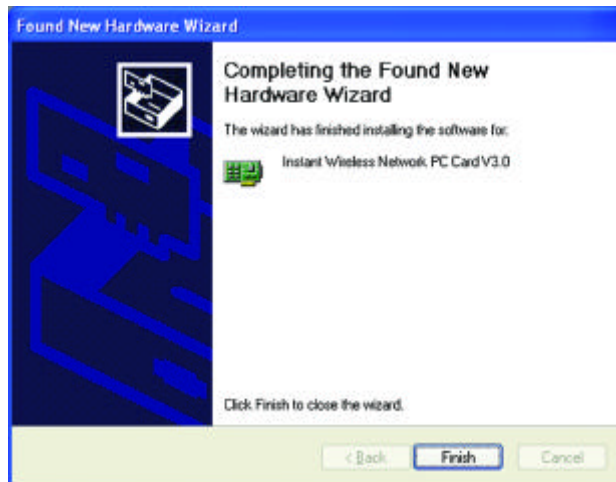


Figure 4-3

**The Hardware Installation is complete.**

Windows XP automatically detects and configures the Network PC Card for your wireless network. To adjust these settings, refer to your Windows XP documentation.

## Chapter 5: Installing the Network PC Card

1. **Locate an available Type II or Type III PCMCIA slot** on your notebook computer.
2. **With the Network PC Card's 68-pin connector facing the PCMCIA slot and the "Network PC Card" label facing up**, as shown in Figure 5-1, slide the Network PC Card completely into the PCMCIA slot while the computer is restarting and before the Windows desktop appears.



3. **You may see several screens appear as the driver installation is finalized.** This is normal. No input should be necessary, and the screens should disappear when the card is ready for use.

**The Hardware Installation is complete. Your Wireless Network PC Card is set up and ready for use. You may continue reading to learn about the card's Configuration Utility in Chapter 6 for Windows NT or Chapter 7 for other Windows Operating Systems.**

# Chapter 6: Installing the Drivers and Configuration Utility for Windows NT

## Overview

The installation of the Network PC Card is different for users of Windows NT because it is not a Plug-and-Play (PnP) operating system. This means it will not automatically detect the presence of the Card when it is inserted. Consequently, the order of the installation is different. The steps involved in the installation are different, as well. *If you are using any other operating system than Windows NT, stop here and refer to the chapters regarding those operating systems.*

## Installing the Network PC Card In Your Notebook PC

1. Locate an available Type II or Type III PCMCIA slot on your notebook computer.
2. With the Network PC Card's 68-pin connector facing the PCMCIA slot and the "Network PC Card" label facing up, slide the Network PC Card completely into the PCMCIA slot while the computer is restarting and before the Windows desktop appears.

**The Hardware Installation is complete. Proceed to the next section for driver installation.**

## Installing the Drivers for Windows NT

Windows NT will set up the Network PC Card differently depending upon whether you've previously installed network hardware or not. Please follow the instructions appropriate for you.

### If You Have Never Installed Network Hardware:

1. Windows NT is not a Plug-and-Play Operating System and will not automatically identify the Network PC Card. To begin setup, insert the **Setup Utility CD** into your CD-ROM drive. If the Setup Utility CD attempts to autorun, exit out of the utility to the desktop by clicking the **Exit** tab. Select **Settings** from the **Start Menu** and bring up the **Control Panel** (as shown in Figure 6-1). Double-click the **Network** icon.



Figure 6-1

2. Windows will display the screen in Figure 6-2, showing that Networking has not been installed. Click the **Yes** button to continue.

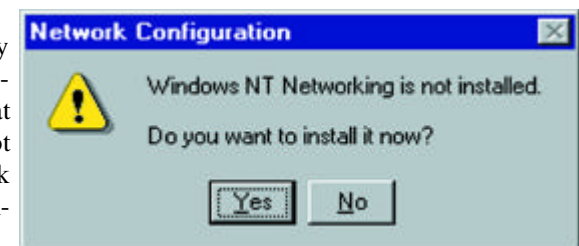


Figure 6-2

3. Installation will begin and you will reach the screen in Figure 6-3. You will want to select the box that reads **Wired to the network** since you are adding network hardware. Click the **Next** button to continue.

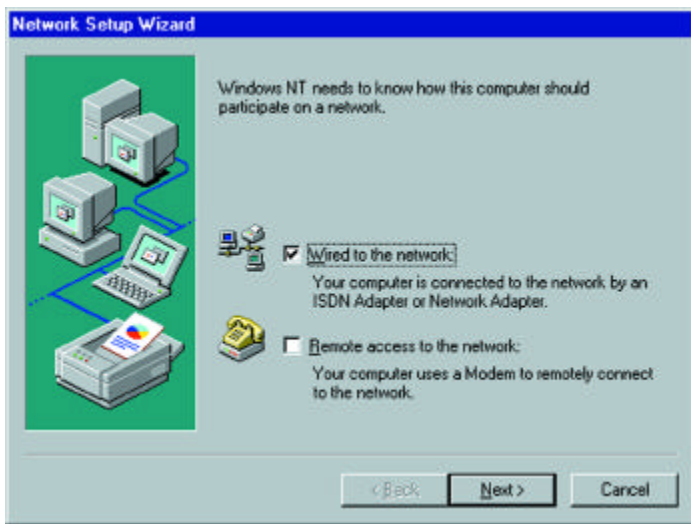


Figure 6-3

4. The screen shown in Figure 6-4 will not show any Network Adapters installed on your system; this signifies that no network adapter has been previously installed. Click the **Select from list** button to continue.

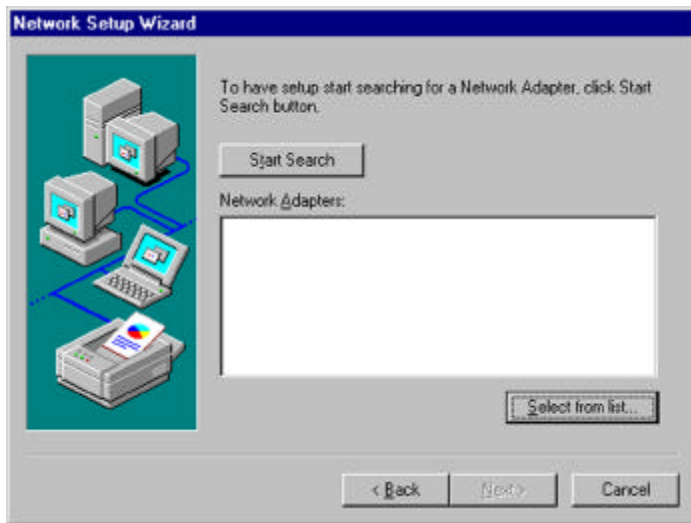


Figure 6-4

5. A list of adapters will appear as in Figure 6-5. You will not want to select one of these, however, as your installation disk (the **Setup Utility CD**) has all of the appropriate drivers. Click the **Have Disk** button to continue.



Figure 6-5

6. When the Insert Disk screen appears (shown in Figure 6-6), type **"D:\WINNT"** in the field provided and click the **OK** button to continue.

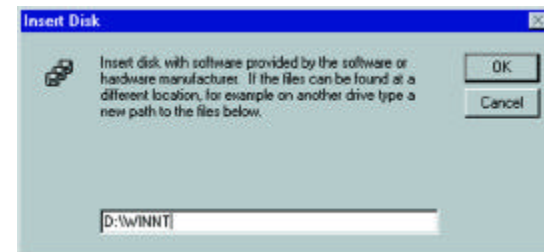


Figure 6-6

7. The Select OEM Option screen (shown in Figure 6-7) will display all available adapters. Make sure that **Instant Wireless - Network PC CARD V3.0** is highlighted and click the **OK** button to continue.

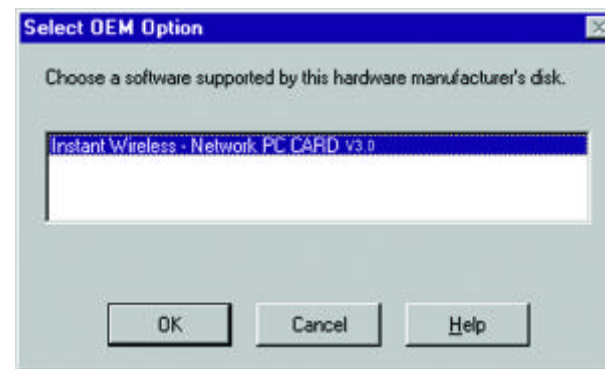


Figure 6-7

8. On the next screen, make sure there is a check mark in the box beside **Instant Wireless - Network PC Card** (as shown in Figure 6-8). Then click the **Next** button to continue.

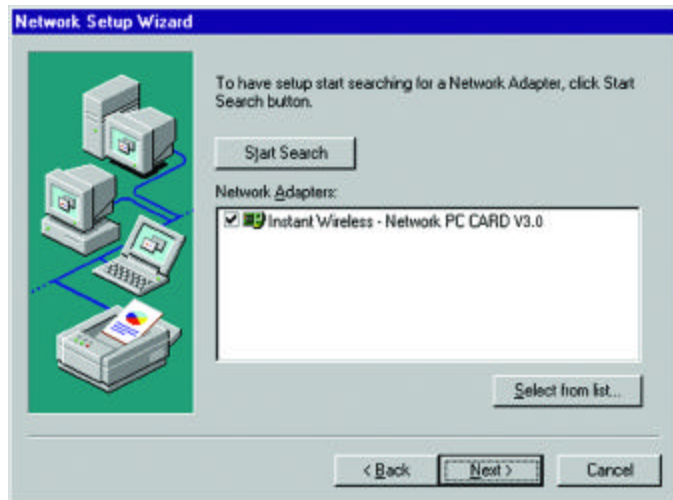


Figure 6-8

9. The next screen (Figure 6-9) will show the list of network protocols used on your network. While the **TCP/IP Protocol** is already selected by default, you should check with your network administrator before installing any additional network protocols. Click the **Next** button to continue.

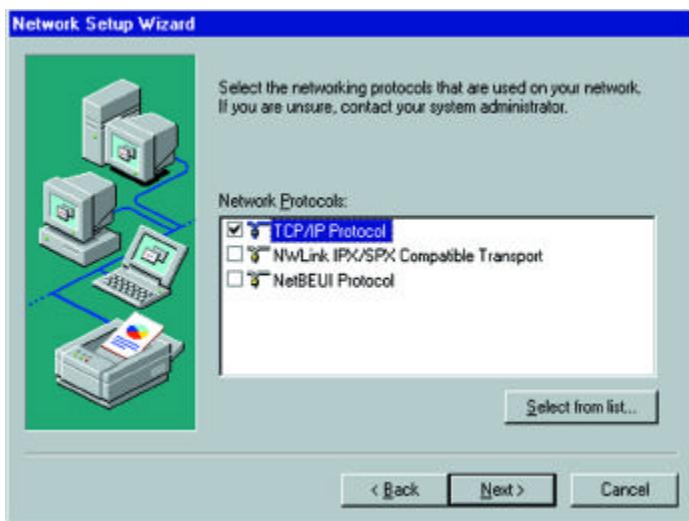


Figure 6-9

10. On the screen showing **Network Services** (Figure 6-10), the selections are automatically made. Click the **Next** button to continue.

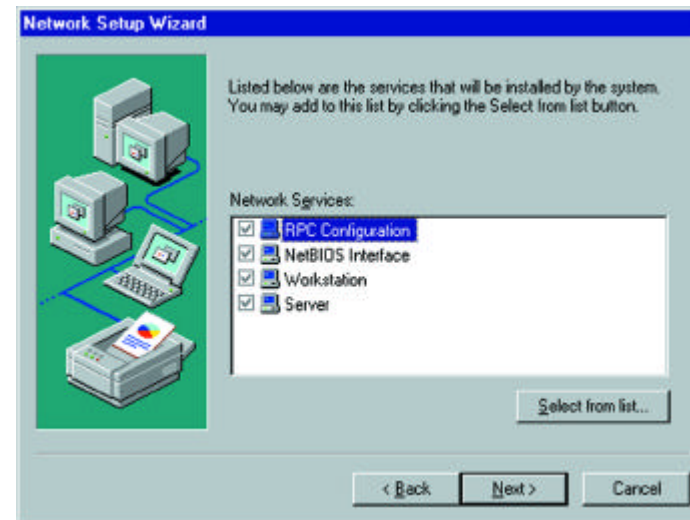


Figure 6-10

11. As displayed in Figure 6-11, Windows NT will now be ready to start installing networking components. After verifying your selections, click the **Next** button to continue or click the **Back** button to make any necessary corrections.



Figure 6-11

12. Windows NT may request further files at this point (as shown in Figure 6-12). Type “D:\WINNT” (where “D” represents your CD-ROM drive) in the field provided and click the **Continue** button.

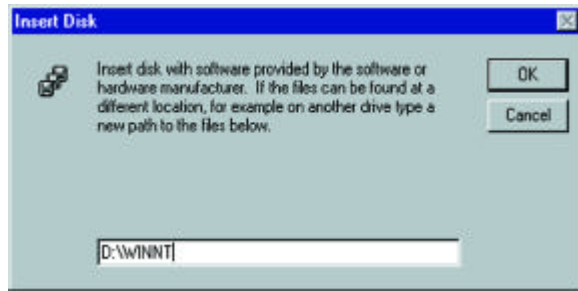


Figure 6-12

If files are still requested, insert your **Windows NT CD** into your CD-ROM drive and type “D:\i386” (where “D” represents your CD-ROM drive). Then, click the **Continue** button.

13. You will now reach the screen shown in Figure 6-13. This is called the Resources & Properties screen. It is recommended that you leave these options at their default settings. If settings must be changed, it is preferred that you use the Configuration Utility that came with the Network PC Card. If you must adjust the settings on this screen, refer to Chapter 9: **Advanced Properties** for more information on the **Advanced Properties** for Windows NT. Click the **OK** button to continue.

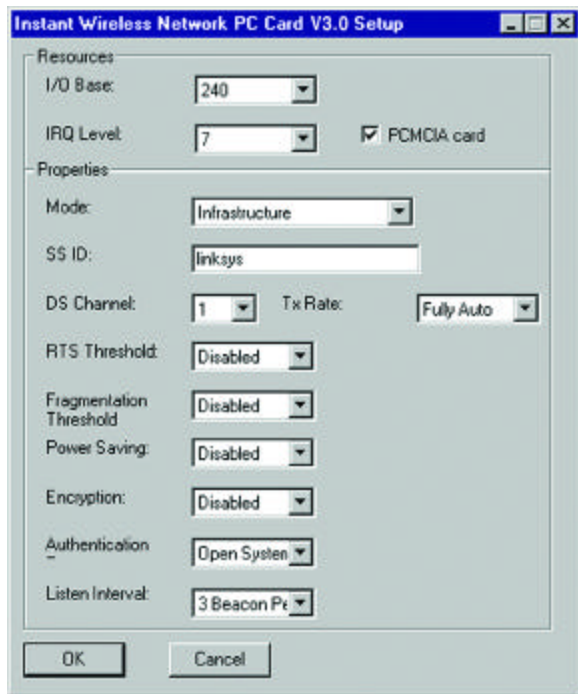


Figure 6-13

14. After setting the **Resource and Properties** fields, Windows NT will begin installing the network components you’ve selected. You may be presented with the screen shown in Figure 6-14, asking if you would like to configure the protocols with a DHCP server on your network. Click the **Yes** or **No** button to continue. This setting may also be changed at a later time.

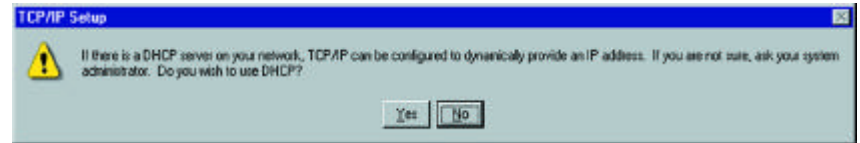


Figure 6-14

15. In the event that the screen shown in Figure 6-15 appears, do not make any changes unless you are proficient with the advanced networking properties of Windows NT. Click the **Next** button to continue.

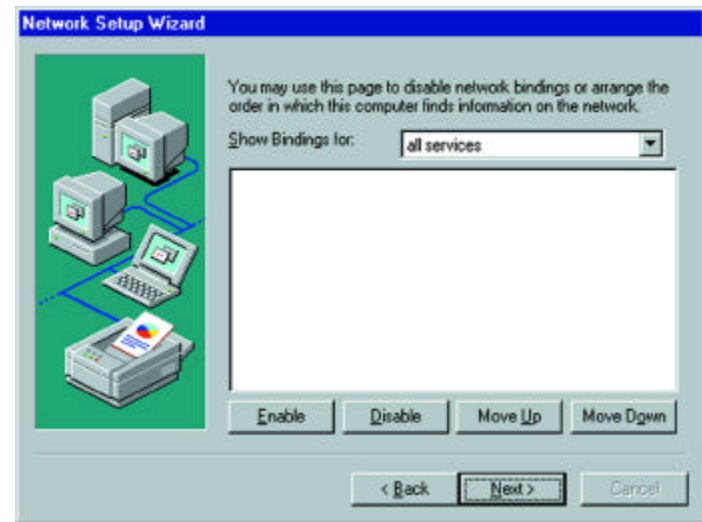


Figure 6-15

16. At this point, Windows NT will let you know that it is ready to start the network. If you’d like to stop the procedure, click the **Back** button. To continue, click the **Next** button.

17. On the screen shown in Figure 6-15, enter your **Computer Name**, how your computer is identified on the network. Then, assign the computer to either a **Workgroup** or **Domain**, whichever is appropriate. The Computer Name must be different than any other on the Workgroup or Domain. Click the **Next** button.

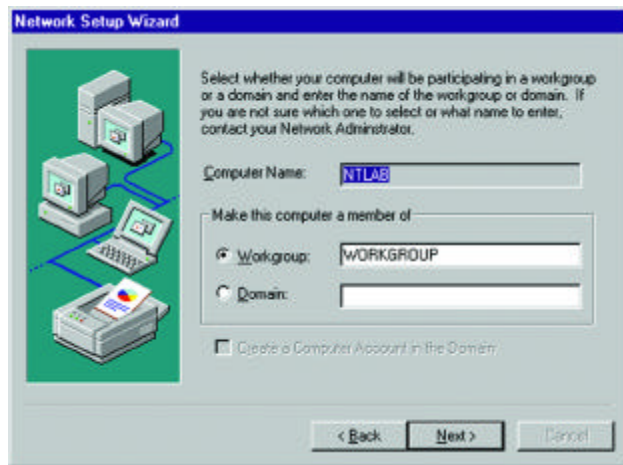


Figure 6-16

18. Once the drivers have been installed, the following screen (Figure 6-17) may appear.

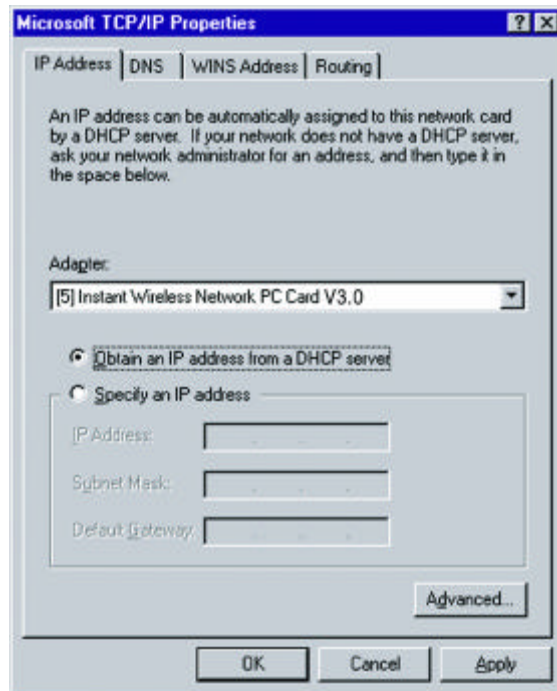


Figure 6-17

Make sure that the Instant Wireless Network PC Card ver. 3.0 appears in the Adapter window (as shown in Figure 6-17). Then, unless you need to assign a static IP address, select **Obtain an IP address from a DHCP server** and click the **OK** button. If you need to assign a static IP address, select **Specify an IP Address**, and enter the appropriate values under IP Address, Gateway Mask, and Default Gateway. After you have made your choice, click the **OK** button.

Windows NT has now completed installing the network. Remove the Setup Utility CD from the CD-ROM drive and click the **Finish** button to continue. Then, restart your computer.

**The Driver Installation is complete. Continue now to the section called Installing the Configuration Utility for Windows NT.**



**Note:** After you have installed the Network PC Card, reapply the Windows NT service pack.

### If You Have Installed Network Hardware Before:

1. Windows NT is not a Plug-and-Play Operating System and will not automatically identify the Network PC Card. To begin setup, insert the **Setup Utility CD** into your CD-ROM drive and then select **Settings** from the **Start** Menu. Bring up the **Control Panel** (as shown in Figure 6-18) and double-click the **Network** icon.



Figure 6-18



2. To add the Network PC Card, click the **Adapters** tab (as shown in Figure 6-19) and click the **Add** button to continue.



Figure 6-19

3. A list of adapters will appear as shown in Figure 6-20. You will not want to select one of these, however, as the **Setup Utility CD** has all of the appropriate drivers. Click the **Have Disk** button to continue.

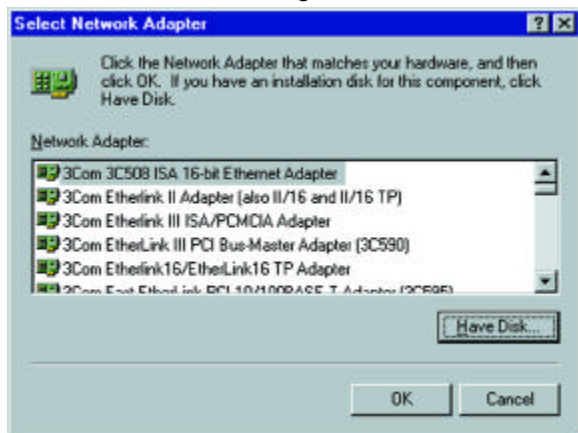


Figure 6-20

4. On the Insert Disk screen (Figure 6-21), type **D:\WINNT** in the field provided. Then, click the **OK** button to continue.

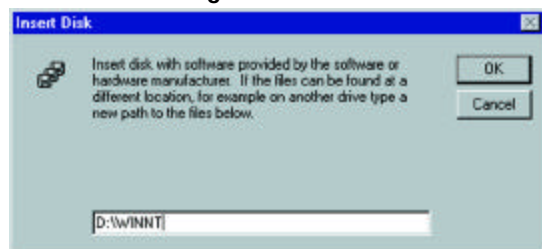


Figure 6-21

5. The **Select OEM Option** screen will display all available adapters. Make sure that **Instant Wireless - Network PC CARD V3.0** is highlighted, as shown in Figure 6-22, and click the **OK** button to continue.

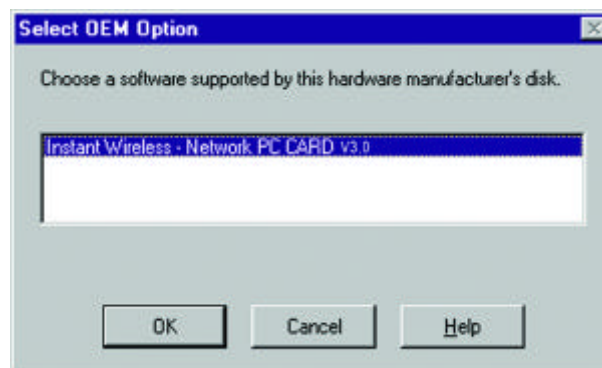


Figure 6-22

6. You will now reach the screen shown in Figure 6-13. This is called the Resources & Properties screen. It is recommended that you leave these options at their default settings. If settings must be changed, it is preferred that you use the Configuration Utility that came with the Network PC Card. If you must adjust the settings on this screen, refer to Chapter 9: Advanced Properties for more information on the Advanced Properties for Windows NT. Click the **OK** button to continue.

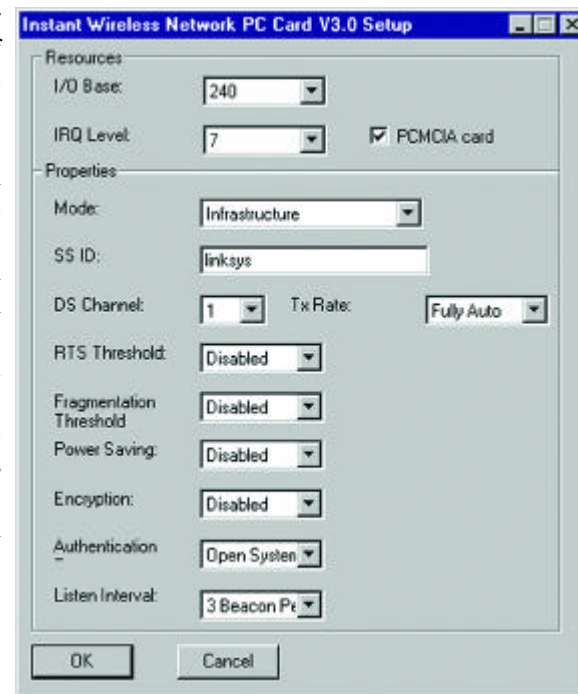


Figure 6-23

7. The Network PC Card has now been installed. You will see it added onto the screen shown in Figure 6-24. Click the **Close** button to continue and then restart your computer.

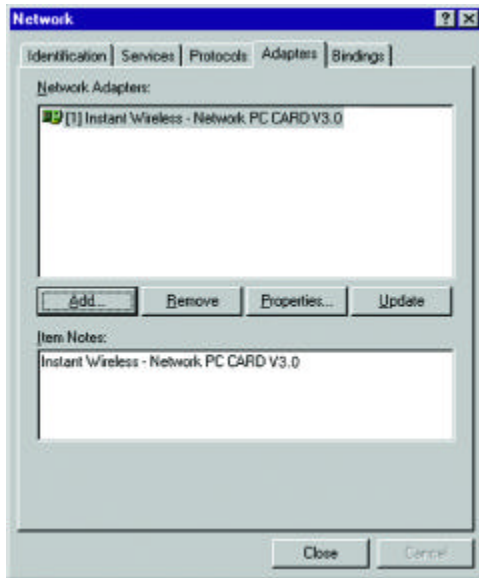


Figure 6-24

8. Once the drivers have been installed, the following screen (Figure 6-25) may appear.

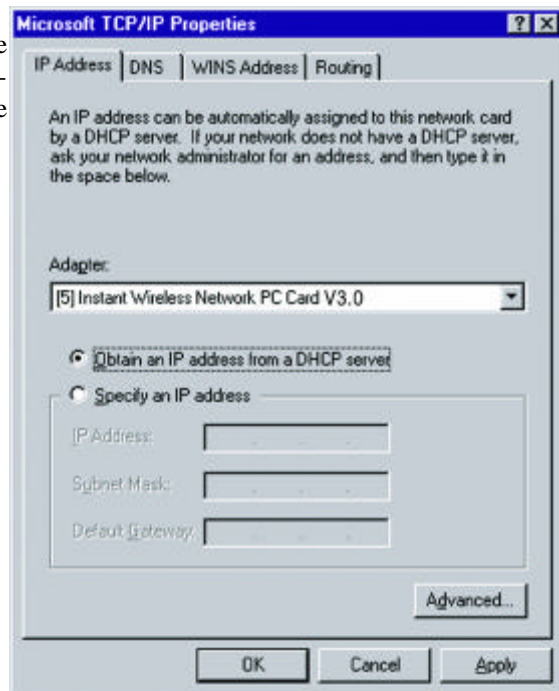


Figure 6-25

If the screen shown in Figure 4-25 appears, make sure that the Instant Wireless Network PC Card ver. 3.0 appears in the Adapter window. Then, unless you need to assign a static IP address, select **Obtain an IP address from a DHCP server** and click the **OK** button. If you need to assign a static IP address, select **Specify an IP Address**, and enter the appropriate values under **IP Address**, **Gateway Mask**, and **Default Gateway**. After you have made your choice, click the **OK** button.

Windows NT has now completed installing the drivers. Remove the Setup Utility CD from the CD-ROM drive and click the **Finish** button to continue. Then, restart your computer.



**NOTE:** After you have installed the Network PC Card, reapply the Windows NT service pack.

**The Driver Installation is complete. Continue now to the section called Installing the Configuration Utility for Windows NT.**

### Installing the Configuration Utility for Windows NT

Once you have restarted your computer, the drivers for the Card should load successfully. Now it is necessary to install the Configuration Utility. Insert the Setup Utility CD in the CD-ROM drive. Unless you have deactivated the auto-run feature of Windows, the screen shown in Figure 6-26 should appear automatically.



Figure 6-26